



REPORT OF 'FANI' CYCLONE AFFECTED COMMUNITIES IN INDIA



Prepared By:

Youth Council for Development Alternatives (YCDA), Odisha, India

Website: www.ycdaindia.org

The Plight of 'Fani' cyclone in Community, Odisha

Cyclone Fani wreak havoc on the lives of Odisha. 'Fani' (pronounced as Foni), the tropical cyclone made landfall on the coastal areas of Odisha on 3rd May 2019. It was intensified into extremely severe cyclone and one of the rarest of rare summer cyclone which was hit Odisha coast. This was the strongest storm to hit Odisha with wind speed greater than 200mph. Efforts made by Govt. of Odisha along with NGO's and other agencies have successfully evacuated people to safer places to save their life.

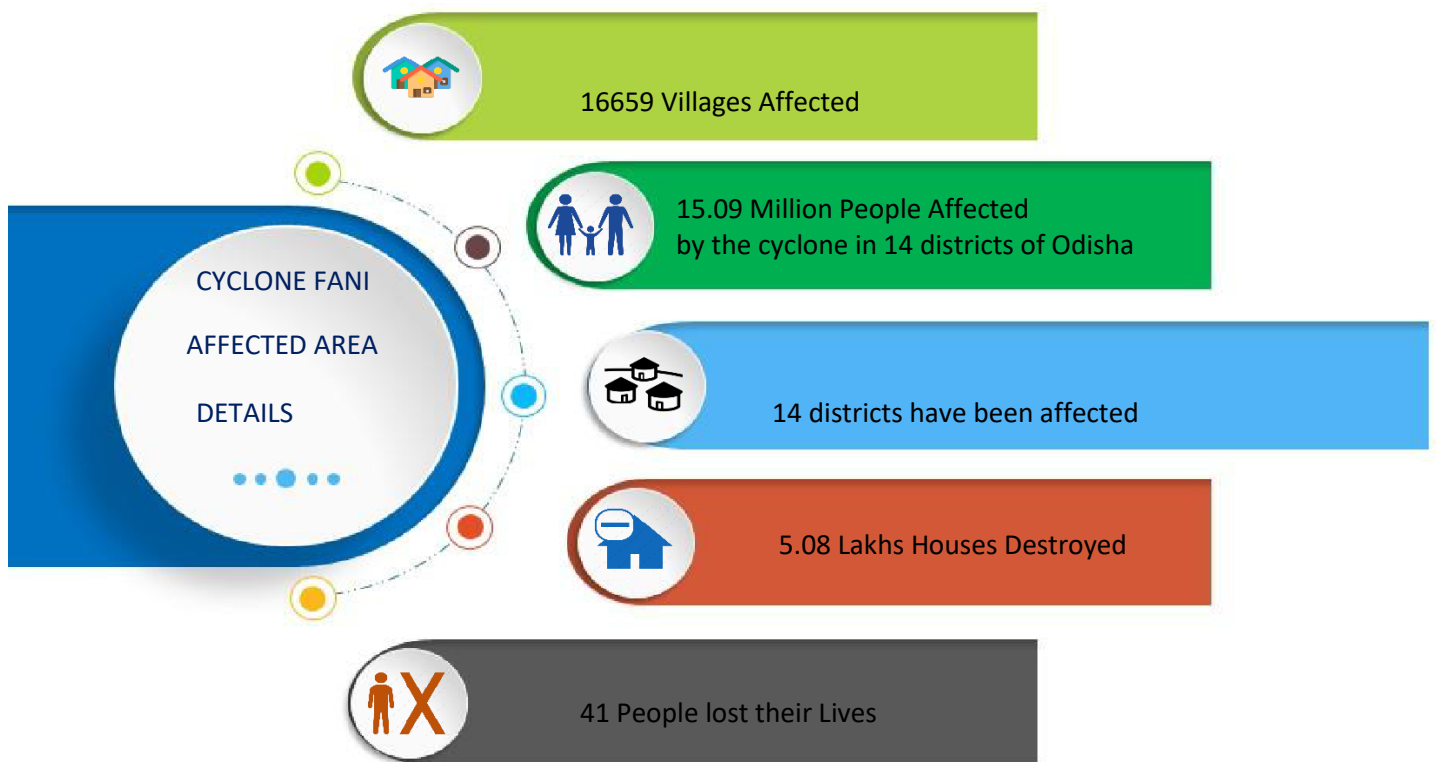
The coastal area mainly Puri, Cuttack, Bhubaneswar and Paradeep were devastated. The district of Puri was the worst hit and the destruction was very unimaginable. There has been major damage to houses, crops, uprooting trees, electric poles and mobile towers and the storm tearing off many roofs. Power lines were down, roads were inaccessible, electricity and communications got affected badly. Power supply snapped due to uprooting of electricity poles, damage of substations and transmission lines. Telecom towers The cyclone has damaged almost all the kuccha houses, polythene roofed houses, tin and asbestos roofed houses in the area and made more



than 60% families homeless. Coconut orchards have been devastated. Sanitary and hygiene conditions were extremely poor in the affected slums as toilets have been collapsed and damaged. Drinking water sources have been heavily contaminated in urban and rural areas, even the village ponds have fallen trees. Families have lost their household belongings (clothes, utensils, food grains etc) under the collapsed houses. They had been deprived of food, clothes and drinking water since days. Children have lost their study materials like their books, notebooks, pen, pencils and other things have been crushed into pieces. Many school buildings has damaged in this cyclone. It affects education for children.

After cyclone, when the evacuated people returned to their houses, they found huge devastation and loss of almost everything. Only they could save their lives. Then they started to find their livestock dead or alive but they were almost dead.

Due to the loss of livelihood, there is chance for people migrating to other place to search of other jobs for earning and this could severely affect children and women. The most vulnerable section of the affected community includes the women, children, the elderly people and the persons with disability. In many places electricity restored but still some village are in dark. Renovation work is going on to back to life.



Bramhagiri and Krushnaprasad area are situated in Chilika Lake site where cyclone FANI was landed. After one month the community people were waiting for household things. Their houses are totally or partially collapsed. Affected people of the villages are still facing hardship as they have lost many things. Electric supply is not restored still in this area.

Similarly Bijapur area and nearby area of this village of Khurdha district are damaged in this cyclone. So we decided to help affected people of this area by providing the relief materials in collaboration with Save the Children.



Coordination of relief work: The entire relief work was organized in coordination with village Panchayat Sarpanch, local village leader, Govt. service providers and District Administration.

Beneficiary Selection: YCDA and Save the Children team had visited affected families after receiving list from affected community leader and village Sarpanch. After visiting the affected the people, the team has decided to provide relief kit to 300 families with mutual coordination of village Sarpanch, elderly village leader and community volunteers. Also it was decided to provide education material kit to school going children.

Relief Distribution:

All the relief materials (non food) including Kitchen item, daily needs and education materials were planned to distribute to targeted beneficiaries.



Counseling provide to Communities: many people and children are suffering from Post traumatic stress disorder more than one month after cyclone. So it is more important to provide psycho social support to children and communities for relax and back to normal life. It



require to provide Psychosocial care for next 4-5 months. We are providing counseling to help the individual to understand the personal meaning of loss, and come to terms with reality and to carry on with their regular lives.



