

Botswana Youth for Social Development Association

END OF YEAR REPORT



“where we all can”

7281
FREE MEALS SINCE
JUNE 2018

**BYFSDA SOUP KITCHEN AT PRINCESS
MARINA HOSPITAL EVERY TUESDAY AND
THURSDAY**

+267 76189424

✉
takeastand
@forsocial
development.org

www.forsocialdevelopment.org

POVERTY & POOR HEALTH WORLDWIDE ARE IRREFUTABLY LINKED. MILLIONS OF PEOPLE AROUND THE WORLD LIVE IN A CYCLE OF POVERTY AND POOR HEALTH THAT IS DIFFICULT TO BREAK, WITH MARGINALISED GROUPS AND VULNERABLE INDIVIDUALS OFTEN THE WORST AFFECTED.

150 +
A DAY

1200+
A MONTH

300 +
A WEEK

**ALMOST
15,000**
A YEAR

EXECUTIVE SUMMARY

People living in poverty are exceptionally vulnerable to crime, exploitation, social exclusion and an array of other social injustices. If they do not have the ability to take real and effective recourse against these actions, then inequality is extended and their vulnerability is worsened. Their increased vulnerability and exclusion further hampers their ability to pursue justice and develop to their fullest potential and thus having poverty spiraling down the generations and keeping families in a vicious cycle of poverty.

Botswana Youth for Social Development programs seek to play its role as civil society and assist the government through improving the socio- economic wellbeing of children and youth from disadvantaged and vulnerable communities, through provision of safety nets, psychosocial support and capacity building to enhance quality of life. The association aims to use fun and inclusive programs to meet the needs of the disadvantaged and marginalized in an effort to assist them to grow to their fullest potential.

The year 2019 has been a year full of great triumphs and downfalls too. The association launched 3 programs being the literacy and arts and crafts program, woodworks and design program and the beauty spa program. Furthermore, BYFSD has taken big steps and began two all year round fund raising initiatives through the Thrift Shop and the Café.

Families trapped in the cycle of poverty, have either limited or no resources. There are many disadvantages that collectively work in a circular process making it virtually impossible for individuals to break the cycle. This occurs when poor people do not have the resources necessary to get out of poverty, such as financial capital, education, or connections. In other words, impoverished individuals do not have access to economic and social resources as a result of their poverty. This could mean that the poor remain poor throughout their lives.

However, the Botswana Poverty Assessment World Bank 2015 study projected that with significant inequality reduction, poverty rates can fall to below 12% by 2018 and below 6% by 2030. Recommendations to reduce poverty include:

- Boosting productivity, employment and labor-market efficiency
- Improving education, health and social protection and safety nets

The Soup Kitchen

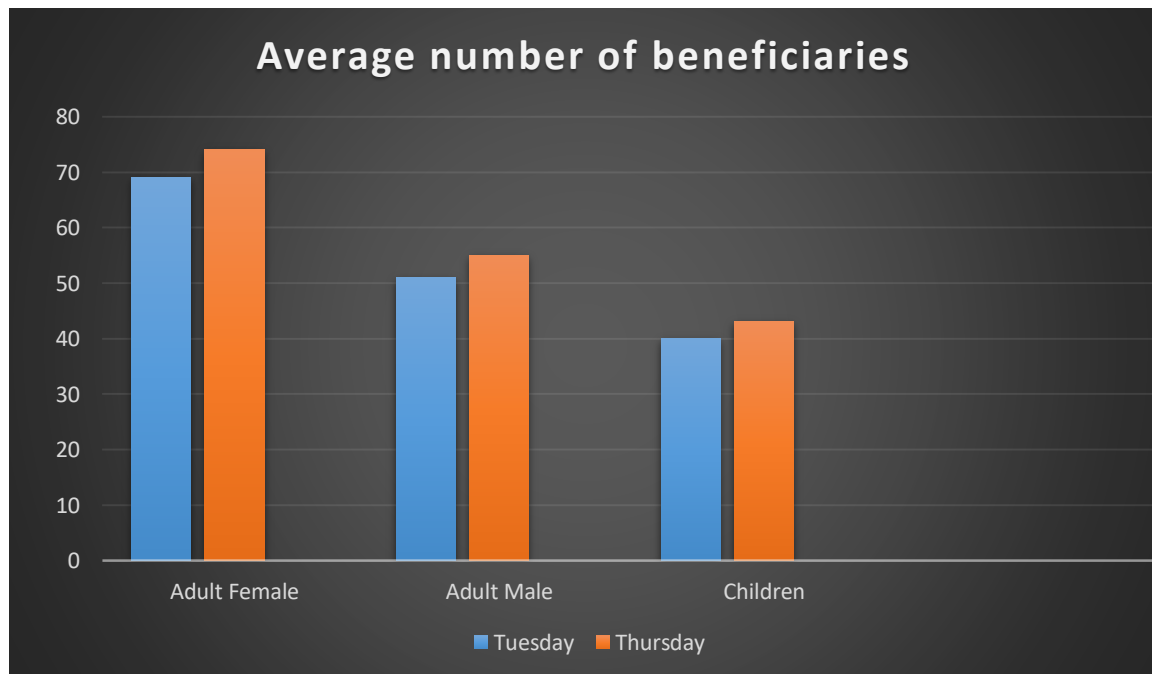
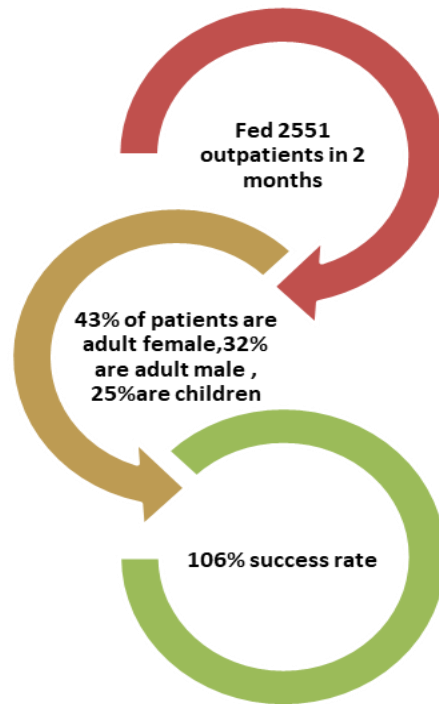
BYFSD carried the soup kitchen into 2019 through assistance of individual sponsors after sponsorship by the Global Committee for Chartered Commissions in North Carolina Raleigh ended. Stanlib Botswana took over the soup kitchen from Feb 2019 which lasted two months seeing to massive changes in the running and productivity at the soup kitchen. The availability of funds made it possible to purchase all non-perishables at the beginning of the month and purchasing perishables a day before soup kitchen day. This ensured that food was ready and served on set times every Tuesday and Thursday. Moreover, due to the availability of funds it was possible to save by buying in bulk when supermarkets had specials and enabled us to add two more dishes for those with special dietary requirements.

Furthermore, we were also able to assist a little more than 150 people each week and never had to turn people back during those 2 months due to lack of food but instead gave extra plates for them to share with their families at home. The patients that received the food at the hospital showed gratitude and stated that due to our program they were able to stay at the hospital the whole day until they see a doctor instead of heading back home due to hunger only to come back the next and find the doctor unavailable. The Public Relations office also stated that the patients have come to them with only word of gratitude at what the hospital has availed to them through us.

Despite all the great things and fulfilment that comes with providing such innate help, the association struggled with transporting volunteers from the center where food is cooked to the hospital and back on some days due to having large numbers of volunteers. This meant having to do 2 trips to the hospital and having some walk to and from the hospital or carrying more than the legal number in the car. This was solved by requesting volunteers to sign up for days and request family members and friends to assist with transportation on days the Soup Kitchen had a large number of volunteers.

The soup kitchen program came to a halt at the end of April 2019 due to lack of sponsorship, which we still struggle to find. The association came together to find ways of reviving the soup kitchen even without sponsors, and from this BYFSD Haven café was set up to continue assisting those in need with free meals. BYFSD has now identified two child headed households in Bontleng and White City which they provide with cooked meals every day from food sold at the café.

SOUP KITCHEN MILE STONES



WOODWORKS & DESIGN PROGRAM

These two programs allow for beneficiaries to enhance their creativity, moreover at current the Botswana market is very welcoming of these two having a number of business mushrooming in the streets. The government has allowed these two businesses to trade as hawkers making them viable and budget friendly start-ups for people living in disadvantaged communities. This project will teach participants new skills on how to be innovative with the craft and to consider the value in the provision of such products. At the end of each course beneficiaries should be enabled to produce saleable products.

Our woodworks and design program had been set to begin in June of 2019 through the sponsorship of St Luke's foundation and assistance of the Gaborone city council, African Wood works and LeSweedy Designs. Gaborone City Council holds the office that overlooks social workers in the areas BYFSD has targeted to assist which are some of the disadvantaged and marginalized communities being Bontleng, White City and Old Naledi.

Gaborone City Council was to assist us through identifying out of school youth from disadvantaged and marginalized communities and assisting them to apply for our programs. This was done to ensure that youth applying for the program have social workers who care for them and this would enable us to track the change that our programs are making in the lives of the youth taking our programs. Further, because the program did not have a budget to transport the students to and from the center the social workers were to assist in facilitating that youth that apply are those determined to complete the programs and have the perseverance to attend all classes to ensure their success.

However, despite having come up with great networks to enable the program the most important piece of the puzzle was to have youth to participate in the programs. The unfortunate state of governance in our City Council saw us failing to start the program in June 2019 as intended and instead the program has been moved to commence in January 6 2020.

All equipment required for the programs were purchased through St Luke Foundation sponsorship and are stored at our center until the programs commence. Furthermore, the association has moved to work with Guidance and Counselling Departments at Secondary schools within these locations to assist in placing participants and assisting with application for the programs. These participants will be disadvantaged and marginalised youth in their final year of school, who will begin their training in January and end it in May then be attached to one of the companies providing training for a 3 months' internship. At the end of the program participants will be work ready or able to start their own establishments and become self-sustainable members of the community.

Furthermore, the association has also gone into a partnership with Alex Dikgole, a tailor and Krystal Designs (Interior Design and Construction Company) to provide basic woodworks and design training in 2020.

Beauty Spa Program

Our Beauty Spa program aims to equip and empower young girls of the ages of 18-25 who mostly are from impoverished and marginalized communities and families with the fundamental skills making them work ready and able to start their own small make up businesses. As part of our objectives to socially empower and uplift the lives of many young people, our basic role is to provide non formal training through the help of qualified, experienced and passionate volunteers who take their time from their busy schedules to teach and train participants. The NGO has set up to begin this program in July 2019 through sponsorship of Church of Nativity and partnership with local makeup artists and cosmetics specialists. The program would take place at BYFSD center in Gaborone and will be providing the necessary equipment for proper facilitation. Our mission is to teach skills to make the out of-work employable, to promote self-sufficiency and provide a sense of belonging to those who are disadvantaged and marginalized.

Although BYFSD was unable to begin the program due to a lack of participants in the year 2019. It is set to begin in January of 2020 through the assistance of guidance and counselling departments at secondary schools to enroll recently graduated out of school youth. The association is currently working on a partnership with a local training institute, SHANAAZ Institute of Beauty Therapy for an annual sponsorship of P18,000.00 worth of one (1) week make up courses for our participants upon completing their non-formal training. Our program is scheduled to run for 5 months per year with participants coming two times a week for a total of 6 hours per week. Our proposition to the institution is to sponsor six (6) of our top performing participants (one participant every 2 months) according to the school calendar. This one (1) week make up course will guarantee our participants certification enabling them to have formal reference in their quest to make a living out of the training.

Furthermore, BYFSD has proposed that graduating students enrolled at SHANAAZ for full time courses should facilitate our Beauty Spa program as part of their projects subject to their availability and schedules. Through this partnership our two organizations will be working together towards one of the many goals among them socially empowering young people to change their lives and those that may be dependent on them.

The Literacy and Arts and Crafts Program

This program supports advancement of low literacy levels among primary school students. It includes the syllabus for Standard 4 - 7. The association offers this program to one primary school, currently only Bontleng Primary school with 41 kids. Ultimately as the organisation grows, it wishes to incorporate more participants by running in more schools. The arts program offers learners who may not be academically gifted an opportunity to acquire skills which they can use to produce an income stream. We are also of the strong belief that arts are an important part of a child's education and growth, as it enables increased self-confidence and self-understanding, enhanced communication skills, and improved cognition. The classes will be taught by skilled facilitators who are artists themselves in their respective art forms.

BYFSD adopted 41 children providing Mathematics, English and Science tuition to stand 4 to 7 students from May 2019 to November 2019 when schools closed for 2019. This program also provided lunch snacks as it kept the children for 2 hours after school. The literacy levels are quite damning and show that there is a lot more that needs to be done for children living disadvantaged communities in terms of general confidence and assertiveness building and also literacy. The students prove to be quite creative and enjoy arts and crafts.

By undertaking these programs at the same time we are able to tell that with some students, there is a lack of confidence in their academic abilities which may be delaying their progression academically. The students show ability to think out of the box and understand instructions when carrying out craft exercises and are a lot slower when carrying out literacy exercises.

The children have also shown a great fondness to the idea of rewards and praises. The education system everywhere rewards exceptionally performing students. However, BYFSD recognizes students who are putting a lot of effort and those that continue to improve steadily. The program has adopted the phrase “we are stars” and is used by all the students regardless of their term marks or abilities when it comes to academics or crafts. This we believe has seen to the improvement in various ways of each student with some improving their marks at exam time and some showing astounding levels of confidence and assertive that we did not see when we began the program.

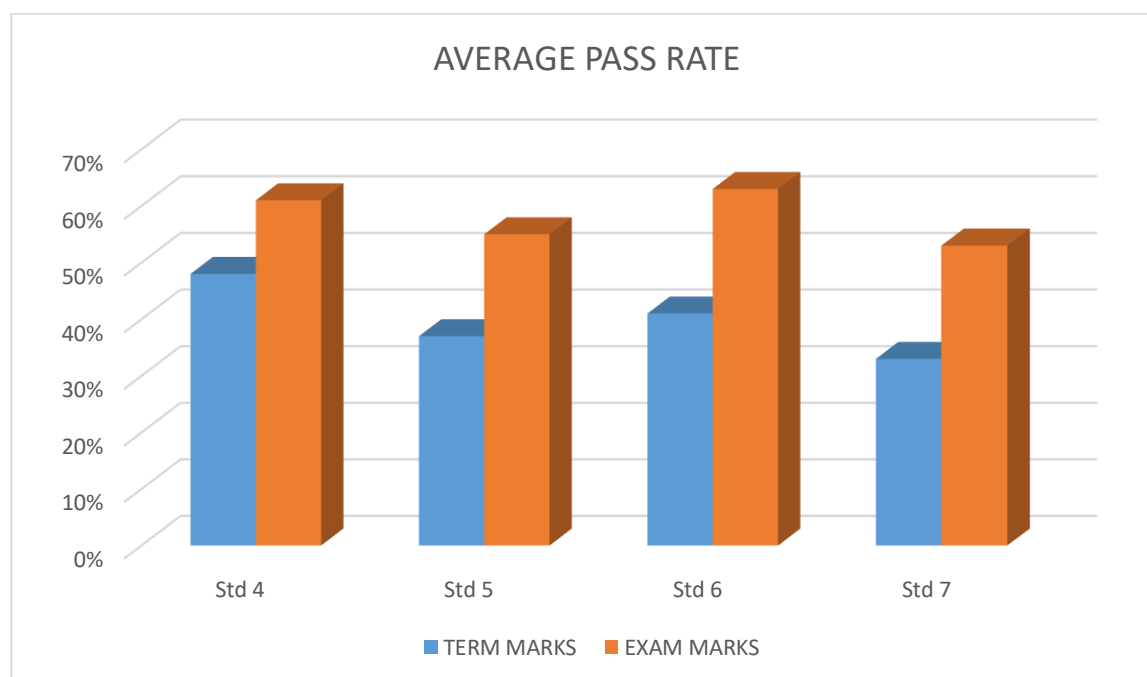
At the end of the program after doing mostly revisions for their exams we requested all the students to tell us what grade they will have at the end of the exams. The confidence that many of them showed in their abilities to improve their grades was amazing. All 4 students who had stated that they will acquire 1st class status were able to do so, with only 3 students having a grade lower than they had pledged but have improved a lot from their term work.

However, we still struggle with some students and believe the assistance of a social worker and a special needs specialist can assist on how to help the students improve academically and how to boost their confidence to ensure best results. The students we struggle with are in Grade 5 and we believe having more time with them in the following years will ensure better development.

MILESTONES

The literacy and arts and craft program have been great motivation to keep on facilitating the development of those continually set aside by policies and structures of Government and how our communities have been socialized.

Of the 41 students from STD 4 to 7 we have 50% of the students graded over average with 18% graded as average and 32% graded as below average. However, we have realized a great improvement between the children's term marks and exam marks proving that more attention given to the children can help them develop greatly and benefit from the whole 10year free basic education that our government provides



CHALLENGES

Although the program has realized good results, the association struggles a lot with allocation of classrooms at the schools at the most. This, causes loss of time by the students to benefit greatly from the program. Moreover, the association finds it quite worrying that children go up to the age of 10 struggling with writing simple grammar and in some instances even their names.

This is a clear indication that the work of BYFSD is indeed necessary to augment what the government already provides. We have come to the conclusion that the children just need

more help and regular practice. Further, that the kids relate more to fun problem solving question and are able to understand some complex concepts through games.

SUSTAINABILITY PLAN

Thrift Shop

Botswana Youth for Social Development set up a thrift store which sells pre-loved clothes, jewelry and good products made by participants as one of the ways of generating income to sustain the organisation. The thrift shop is open to the public and we also receive drop offs from people.

BYFSD Haven

BYFSD Haven is a café set up at the BYFSD center which provides lunch meals and light meals on Mondays to Fridays from 11 am to 6pm. Haven houses a special area we have dubbed as the mental corner which attempts to restore the current problem we have with mental health issues among the youth. The mental corner provides a safe space for one to relax, read and journal about their struggles and possibly have enough peace to find their strength and tackle their issues.

Furthermore, the Haven also caters and hosts events to raise funds to pay capital expenses of the association which includes, rent, utilities and allowances. It employs young struggling mothers, out of school youth that do not qualify for government sponsorship and therefore are unable to get into college and other disadvantaged individuals within our community.

Through Haven we have been able to continue to carry out the mandate of the soup kitchen by providing free meals to two child headed households.

OUR JOURNEY IN PICTURES



Soup kitchen beneficiaries in line to get lunch meal.



BYFSD volunteers dishing for beneficiaries

BYFSD PROGRAMS AND NEEDS

Literacy Program

- BWP 100 buys 1 child a pair of shoes
- BWP 250 buys on child a full set school uniform
- BWP500 transports 1 volunteer to the school 10 times a month
- BWP 1000.00 buys 40 students snacks 10times a month

Woodworks and design program

- BWP 500.00 buys working material for 1 participant
- BWP500.00 transports facilitators 10 times a month

Beauty SPA Program


- BWP 700 buys cosmetics for 1 participant
- BWP 250.00 transports volunteers 5 times a month

SOUP KITCHEN

- BWP 7.00 feeds 1 outpatients
- BWP 2500 feeds 300 outpatients per months



Advertising fliers used for our fundraisers



MAKE GIVING A BASIC NEED..
EAT FOR A CAUSE

SUPPORT BYFSD HAVEN

**LOCATED AT 815 EXT2 OPEN
WEEK DAYS ONLY.**

The food drive is sponsored by Botswana Youth For Social Development association. To continue creating a place where we all can



CREATE A PLACE WHERE WE ALL CAN!

Give differently.

BYFSD Haven is a small café that provides lunch and light meals on week days from 11am till 8pm.

Proceeds, whether in kind or in cash, go to running BYFSD programs that seek to provide opportunities for children and youth from disadvantaged backgrounds to reach their greatest potential and become self sustaining individuals.

FOR MORE INFORMATION DONATIONS
CONTACT US AT +267 77694693 OR
kgololommpi.BYFSD@gmail.com

BYFSD Haven profile

BEAUTY SPA PROGRAM



**BYFSD
EXT2**

TALENT CREATES
OPPORTUNITY...SO
DOES BYFSD

FOR MORE INFO CONTACT
KGLOLO @ 77694693



Opportunity+Talent=Sustainability

BYFSD Wood Works and Design Program


An opportunity to turn your talent into a
self development tool for self sustenance

BYFSD Centre Plot 815 Ext 2 Gaborone.. For more
information call Kgololo at +267 77694693


Facebook advertisement for programs

***** Mascom 3G 08:39 100%

Thread

 **Tsholo Dikobe**
@TheKhol_Fro

Talk about purpose! So these two guys came in offered FREE FOOD for all patients in Marina. They are from an NGO called Botswana Youth For Social Development.Kgololo Mmipi & team,I don't know you guys but what you did for Batswana today, was priceless!Your mandate saves lives! 🙏

 **Kopana Le Bagwedi** ▶ Consumer
Watchdog Botswana
1 hour ago · 🌐

A few weeks ago I took my mother to PMH for her medical check-up. Around lunch time, a group of youth brought lunch for all the waiting patients and their companions/ caretakers,

When I asked, they said their name is Bots Youth for social development association,

I would like to applaud them, They are doing a tremendous job,

If you are reading this and you have the means to donate food items for them to keep cooking,

tremendous job,

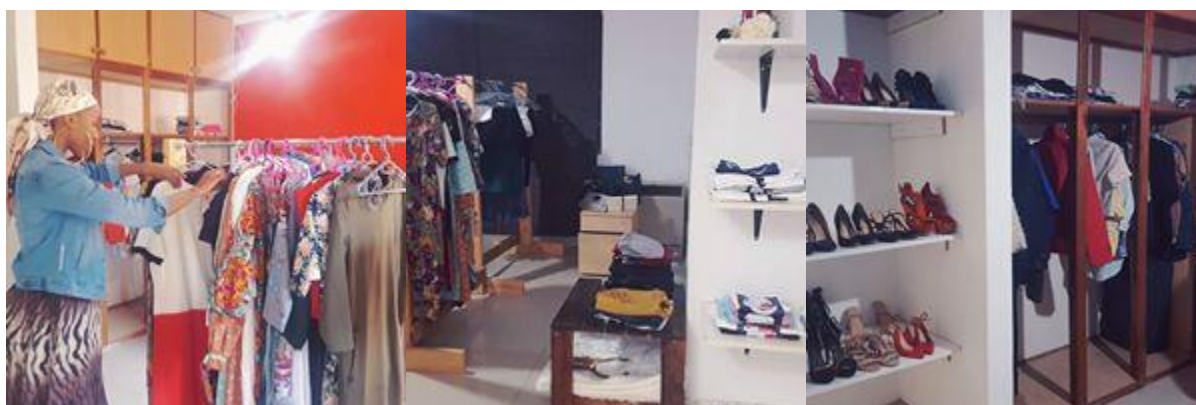
If you are reading this and you have the means to donate food items for them to keep cooking, industrial stoves for them to increase capacity, a van(s) to deliver to different sides at once, grant cash to remunerate them in small amounts, please do help. You may be owning or working for an association that can commit to donate for the long term. At a personal level, you can also help, P200 goes a long way,

Unfortunately I didn't take their contacts, But if we safe this post widely enough, we will find them, And if we share this post widely enough, we will find the right donors.

Social media posts about BYFSD work



Literacy and arts and crafts program beneficiaries and volunteers



BYFSD Thrift shop



Facing car challenges with a smile and cofounders at work with no volunteers in sight

CONCLUSION

Botswana Youth for Social Development Association would like to thank you all for being part of the change. Each donation has played a role through us to provide hope, empower lives and give back dignity to those that are in need of assistance. Furthermore, the association was also able to identify other needs within the hospital and recommended them to other civil societies aligned with the need to provide assistance. Poverty and poor health worldwide are irrefutably linked, with poverty being both a cause and a consequence of poor health. Poverty increase the chances of poor health while poor health in turn traps communities in poverty. By providing a meal for those in need, we collectively say to those in need that there is hope and that change will come. The other programs of the association then provide the skills, the knowhow, the courage and the self-confidence that the world can be a place “**where we all can**...change of future, be self-sufficient, get out of poverty and change the lives of the communities we live in.”