



FRIENDS OF HUMANITY PROJECT: Turning refugee camps into bliss haven opportunity hubs

I. CONTEXT

According to the UN High Commissioner for Refugees, in 2017, 65.6 million people were forcibly displaced worldwide because of persecution, conflict, violence, or human rights violations alone. More importantly, despite the efforts and aid programs put in place, refugees still live in extremely precarious conditions (malnutrition, lack of job or income for refugees, difficulties to access to the health care, etc.) Refugees are vulnerable and need adequate assistance. Some young people are already involved in delinquency in several forms: excessive consumption of alcohol, drug abuse or prostitution among others. Moreover, most of the refugees have suffered trauma of all kinds: sexual abuse, torture, imprisonment, physical and mental injury, imprisonment, etc.

Friends of Humanity believes that there are two conclusions to be drawn: First, every year there are more and more refugees in the world in distress that need our support. Second, it is possible to support and change considerably the living conditions of a greater number of refugees (and their families) by developing their practical and entrepreneurship skills.

Mahama refugee camp in Rwanda (more than 60.000 refugees)



II. FOH MAHAMA ELITE CENTER IN RWANDA

For many years, Friends of Humanity has been supporting the international NGO Maison Shalom, whom supports refugees to develop practical skills through vocational trainings with the purpose of empowering them to become self-reliant. In June 2018, Maison Shalom and Friends of Humanity opened, at the Mahama refugee camp in Rwanda (with more than 60.000 Burundian refugees), a center called “Mahama Elite Centre” to foster socio-cultural development of Burundian refugees, with courses including English learning, culinary arts, tailoring, embroidery and painting among others.

The foundation stone of the workshop was laid on January 3rd 2018, but only 98 days after the actual beginning of the construction works, during which numerous men and women refugees of all ages worked together as a team (getting an income for their work that helped them to improve their living conditions), on June 22nd 2018 the Centre was opened and operational.

Mahama Elite Center of Maison Shalom Funded by Friends of Humanity (opened in June 2018)



A month after the inauguration of the Elite Centre at Mahama refugee camp, several activities and trainings had already started:

- 40 young Burundian refugees from the camp started a 6-month sewing training.
- 20 young refugees are following computer courses at the Elite Center to learn how to better use Microsoft Office and the learning opportunities offered by the Internet.
- Dozens of refugees from all ages come to the Centre every week to read and borrow books from the growing Elite Center’s Library. The Elite Center’s Library at Mahama Camp has 625 books thanks to donations. Even though the library has just been inaugurated, already more than 125 adults and children come every week to read and borrow books to educate themselves, but also to escape from the hardships of their daily lives at the camp.
- French language courses have been set up (of conjugation, grammar and vocabulary) for 30 children (18 girls and 12 boys) between 9 and 11 years old, so that the exile does not prevent them from continuing to learn.

- 25 young refugees have been enrolled to study art and painting. The 25 selected trainees started their training in mid-July. The training is offered by professional artists who are also Burundian refugees living in the camp and receiving a salary for their work.

The Mahama Elite Center has become not only a learning and training center, but also a place of hope, joy, and healing for residents of the camp.

According to Paul Kenya, UNHCR Field Officer at Mahama camp, this Center not only has a unique positive energy hardly seen in a refugee camp, but above all it is an exemplary project of refugee management, assistance and solidarity that needs to be replicated in as many refugee camps as possible in the world.

III. REFUGEE CRISIS IN UGANDA

As a relatively stable country in a volatile region, Uganda has opened its borders to become one of the countries hosting the most refugees in the world. Civil war in neighbouring South Sudan, insecurity in the eastern region of the Democratic Republic of Congo (DRC), and political unrest in Burundi have contributed to the most recent waves of refugee influxes in the past few years. However, Uganda has had a history of welcoming refugees for decades. Nearly 500,000 South Sudanese refugees fled to Uganda after the outbreak of violence in Juba in July 2016, and more than 86,000 Congolese refugees have arrived in the country since fighting escalated in eastern DRC in December 2017.¹

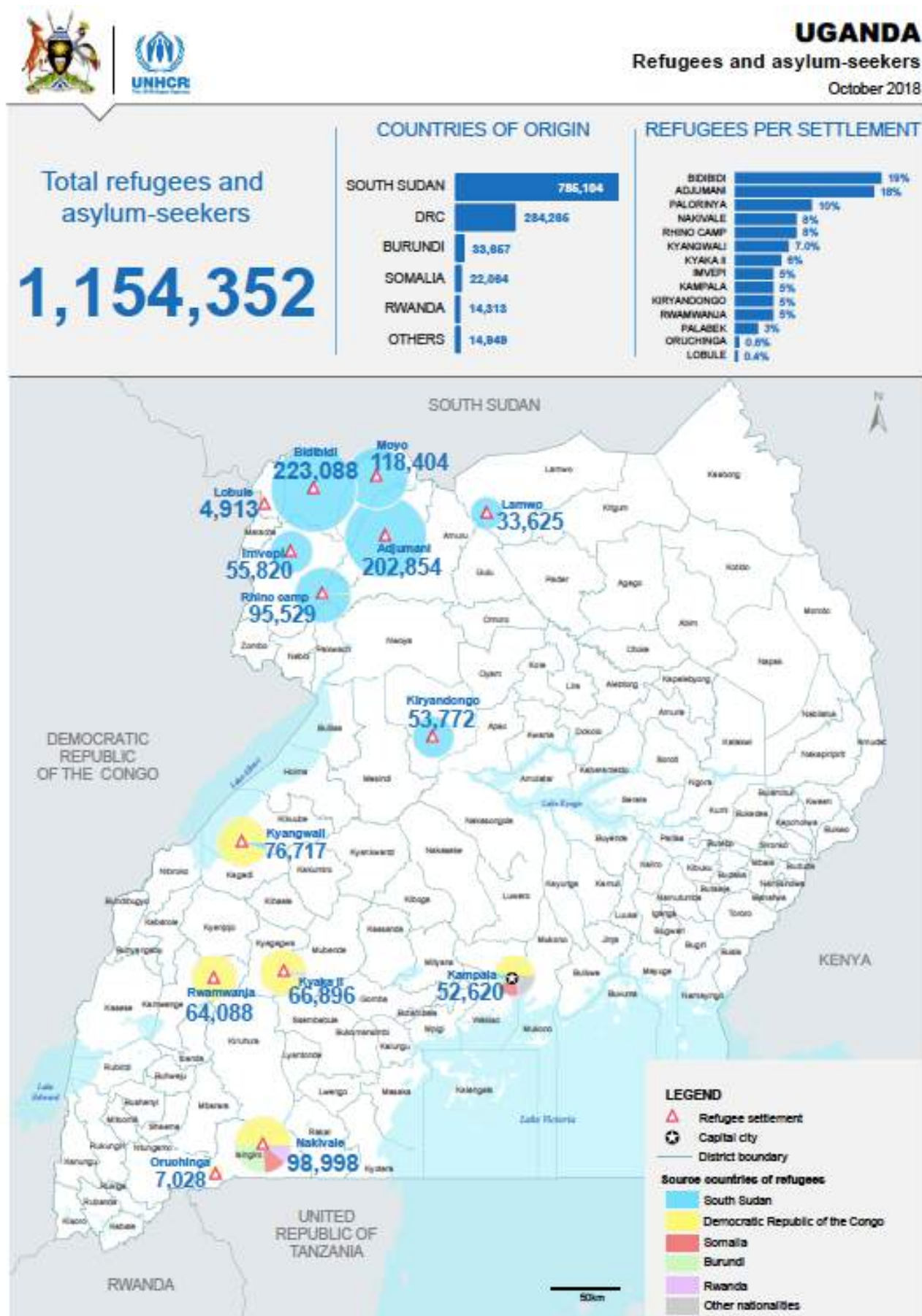
Following a contentious presidential election in Burundi in July 2015, around 40,000 refugees settled in Uganda. These newer refugee populations join refugee communities from Ethiopia, Eritrea, Rwanda, Sudan, and elsewhere already settled in the country, bringing the total number of refugees in Uganda to an estimated 1.1 million people. Throughout the next year, more refugees from both South Sudan and DRC are expected to arrive, with limited returns anticipated based on a continuation or escalation of the current conflicts. Due to the high numbers of refugees in Uganda, the range of origins, and the varying lengths of displacement, humanitarian needs among these groups are significant and diverse varying by population group and location.

IV. REPLICATING MAHAMA ELITE CENTER IN UGANDA

The Mahama Elite Center in Rwanda is already empowering refugees in Mahama Camp through teaching them dressmaking and entrepreneurial skills. The Center not only aims to train refugees in sewing, painting, languages or computer knowledge, it is also well equipped to be a production unit.

Mahama Elite Center enables refugees not only to earn income to live in dignity in exile, but also to be usefully occupied and not have time to engage in bad and destructive behaviours which are often the result of idleness and despair. Moreover, refugees will produce items for them and their families, as well as for the most vulnerable members of the camp, which in turn will help to improve the living conditions of the Camp. Some of the items made will be sold in on-site shops, at events and fundraisings, and online.

Map 1: Total refugees in Uganda by Country of Origin and refugees per settlement



Statistics: Provided by OPM (proGres)

Creation date: 31 October 2018 Author: UNHCR Representation in Uganda Feedback: IM Team Uganda (ugabimug@unhcr.org) | UNHCR SO Kampala

To overcome these challenges and improve the living conditions of refugees, Friends of Humanity seeks to replicate the model case of Mahama Elite Centre by building similar Centres in other refugee camps in the world, such as Nakivale or Bidi Bidi refugee settlements in Uganda.¹

These Centres would focus on offering not only vocational training (in painting, culinary arts, sewing, soap making), but also would have a library and an e-learning centre (to study online language courses, university studies and self-improvement courses on leadership, entrepreneurship or mindfulness). Moreover, psychosocial support, meditation and theatre workshops would take place, as well as weekly documentaries and film screening and music performances, among other activities.

V. A HOLISTIC AND TRANSFORMATIVE APPROACH

By opening these Centres, Friends of Humanity seeks to promote a holistic transformative approach in education, inclusive development, culture promotion and leadership. Education is the most powerful tool for empowerment. It is only with a good education that the young generation can make informed decisions, and attain the self-confidence they need to seize the opportunities for a brighter future for themselves, their community and their (host and/or home) country.

Our belief is that through a value-centered education, we can transform people's mind-sets, attitudes and behaviors, unlock tremendous leadership potential in young refugees.

We undertake to focus on capacity building for young refugees to transform them into competent economic development actors. Skill development is a fundamental prerequisite for vulnerable community members to become economically active. Our technical and vocational skills training programs will focus on addressing the scarce and critical skills needed in the most marketable and profitable fields of the region. Developing the capacity of refugees will improve their likelihood of employability, entrepreneurship and innovation. Ultimately, they will gain the power and freedom to end the intergenerational cycles of violence, economic dependence and extreme poverty.

¹ As you can see in Map 1: Nakivale refugee settlement is located at the South of Uganda and counts with more than 98.000 refugees from 5 different nationalities (mostly from DR Congo, but also from South Sudan, Somalia, and Burundi). Meanwhile, Bidi Bidi refugee settlement is one of the biggest refugee settlements in Africa and in the world, and counts with more than 220.000 refugees from South Sudan.

Sewing vocational training at Mahama Elite Center



Friends of Humanity seeks in different dimensions to implement a holistic and transformative approach to support refugees with activities and programs going:

- From kids to adults to elders
- From the individual, to families, to groups and communities within the camp
- From education to entertainment
- From traditional arts and music to film screening and modern dances
- From promoting traditional jobs to the use of new technologies and internet to ensure new opportunities
- From traditional psychosocial support techniques, to the use of meditation, painting or music performances to heal traumas

The Center will be a key and focal point of reference for all refugees in the camp, where refugees all of ages, gender and interests will find a space to disconnect from their difficult living conditions, a space with an extraordinary positive energy of solidarity, community, entertainment and joy, a place to meet, discuss and share ideas and experiences, a place to learn and work, a place to create activities and organize events.

Moreover, this approach even takes into consideration the fact that refugees do not have to be a burden for the host community. While working to sustain themselves, they can contribute to the development of the host community at the same time. We want to empower refugees in their camps to help them become active participants to the development of the host community.

Last but not least, the main aim is not to educate and offer tools to refugees to improve their present living conditions in the camp and in the host country, but also, we seek to prepare them to be skilful key actors of change in case one day they come back to their home country. In that case, the Center would support and benefit to those in need in the host community.

Painting Vocational Training at Mahama Elite Center



VI. AREAS OF INTERVENTION

The aim of these Centers will be based in the following areas of intervention:

- A. Vocational Training and sustainable development** - To teach and develop relevant skills as well as entrepreneurship to refugees aiming to turn them financially self-sufficient.
- B. Cultural promotion** – to organize cultural workshops and events of music, theatre and Cinema-Debates
- C. Women Empowerment** – to empower women not only through vocational training but above all through group meetings, workshops and other activities.
- D. Education for peace** - create a space for education on leadership, peace promotion and reconciliation;
- E. Psychosocial support and Meditation** – to promote trauma healing of vulnerable people through meditation workshops and psychosocial support.

VII. DESCRIPTION OF PROGRAMS AND ACTIVITIES

Following the areas of intervention, several activities and programs will take place:

- A) Vocational Training and sustainable development:** This area of intervention will take place following four main steps:

- A.1) Vocational training programs on:**

- Sewing skills
- Culinary arts
- Soap Making

- Permaculture

A.2) Specific monthly training workshops from partners

FOH partners will twice per month travel to the camp and offer special training workshops to refugees in specific and different useful issues and skills, such as design and sewing, in boulangerie-pâtisserie (Bakery), pizza making (Pizzaiolo), ecological construction, design and production of furniture and design objects, among others.

A.3) Courses on Entrepreneurship

Each beneficiary of the vocational training will learn the basics on entrepreneurship to be able to understand and master the basics of managing a business, as well as to be able to have the knowledge to open their businesses.

A.4) Support and putting in place of a the FOH Restaurant, the FOH sewing workshop and the FOH small soap factory within the camp

To support the beneficiaries of the vocational training during the whole empowering process, FOH will open 3 social business that will serve not only to train refugees in sewing, soap making and restauration, it will also enable refugees to earn an income to live in dignity in exile. Moreover, all the young tailors, the soap makers and the restaurant staff will develop a greater sense of self-sufficiency by producing items and earning a salary, which will benefit their families and in turn it will help to improve the living conditions of the Camp.

The Sewing workshop and the soap factory will be well equipped to be a production unit, where marketable articles will be produced to be sold on the local market, and on the international market in the long term. Permaculture training will allow refugees and families to be autonomous, while promoting organic agriculture in the camp.

Training offered by FOH on creation and application of colours on fabrics at Mahama Elite Center



B) Cultural Promotion: Arts and Music

The Center will be a space where arts and music workshops will be carried for refugee children and young people with the aim to ensure cultural development in:

- Painting
- Dance
- Poetry

- Music
- Theatre
- Film Screening Cinema

One of the aims of the Center is to become a key place in the camp where refugees can evade from their difficult living conditions, while participating and/or enjoy film screenings, performances of their traditional music (Burundian drummers), theatre, dances among others. The Center will have an extraordinary atmosphere of joy and entertainment where refugees can gather, disconnect, relax and enjoy arts and music.

Burundian Drummers performance at Mahama Elite Center



C) Women Empowerment

Friends of Humanity believes that the key to building a bright future for all of us is investing in the resilience of displaced women. Several projects and programs will take place investing in refugee women of all ages seeking to promote social and economic opportunities, ensuring education on sexual and reproductive issues, improving health services for women (sanitary towels) and strengthening protection from abuse and establishing measures against gender violence in the camp. Some of these programs will be:

- Vocational training (soap making and others)
- Group meetings
- Women Meditation group
- Empowerment workshop
- Workshops against gender violence
- Project on Production Sanitary towels

Women are often the first responders in a refugee crisis, and whether en route or in camps, in home countries or destination countries, they play a crucial role in caring for, sustaining and rebuilding their communities.

For this reason, workshops, debates and discussion groups will be organized at the Center, apart from the trainings, to promote the empowerment of all women and girls in the camps, and to find ways to address the needs and promote the rights of women and girls.

D) Education for peace

Refugees usually have suffered from long wars, long violent conflicts and low level of development. FOH seeks to offer tools and training to refugees to be able to be leaders towards the constructive and positive political and economic transformation of their countries. At the Center, refugees will learn and forge together a passage away from conflicts and violence, a passage to stable peace and sustainable development, through the following activities:

D.1) Developing English Proficiency for refugees

English is one of the main languages used in the educational, business and diplomatic relations. Helping refugees to develop their proficiency in English will enable them to perform better to continue their studies, finding a job, managing their own businesses, among others.

D.2) E-Learning Center: Enhancing access to language courses and post-secondary education through online courses

Access to education is still a big challenge for refugees in the world. To tackle this challenge, FOH will use modern technologies to provide access to the world's best education for youth. We are partnering with top universities and organizations to offer courses online. Dozens of computers will be accommodated in the Center where young people will study online language courses, IT vocational training on web and application designing and creation, and even university studies.

D.3) Education on Leadership, Peace Promotion and Reconciliation

The aim is to promote and train a young generation to become actors for a lasting peace by focusing on value centered leadership, peace promotion, conflict transformation and reconciliation. Experts from different backgrounds will be invited to support the young people and coach them. The youth will, however, be in the lead of the choice of subjects and stay in charge of the process. The workshops will mainly focus on key topics such as: good governance, reconciliation, non-violent conflict transformation, modern technology and development, etc.

D.4) Library

The Center will count with a small Library where adults and children will come every day to read and borrow books to educate themselves, but also to escape from the hardships of their daily lives at the camp.

Computer Sciences Courses and Library at Mahama Elite Center



E) Psychosocial support and Meditation

Refugees generally have suffered directly or indirectly from violence, torture, rape or injuries.

For this reason, the Center will provide psychosocial support using different techniques going from exclusive group discussions and gatherings of victims in order to talk and support each other, to other techniques using healing activities (such as music or painting), and the organization of meditation workshops and daily morning sessions.

- Meditation Workshops
- Daily Meditation groups

Language Courses at Mahama Elite Center



VIII. ESTIMATED BUDGET

Based on the construction of the Elite Center (Sewing and Art workshop and space for other trainings) in Mahama Camp – Kigali (Rwanda), the estimated budget for an identical building is as below:

- Construction of the Elite center

Quote for the center construction					
Designation	Unity	Qty	Unit price Tzs	Total price Tzs	Total price \$
Site set up	FF	1	1.325.000 TZS	1.325.000 TZS	\$ 579,46
Water for construction	m3	75	53.000 TZS	3.975.000 TZS	\$ 1.738,39
Water tank and it's installation	pcs	1	3.180.000 TZS	3.180.000 TZS	\$ 1.390,72
Subtotal				8.480.000 TZS	\$ 3.708,58
Earthworks					
Manually earthworks	m3	400	11.130 TZS	4.452.000 TZS	\$ 1.947,00
Foundation excavations	m3	85,2	11.130 TZS	948.276 TZS	\$ 414,71
Subtotal				5.400.276 TZS	\$ 2.361,71
Structural work					
Stone basement	m3	55,8	41.075 TZS	2.291.985 TZS	\$ 1.002,36
Sand equalization layer	m2	27,9	11.925 TZS	332.708 TZS	\$ 145,50
Stringers	m3	5,68	651.105 TZS	3.698.276 TZS	\$ 1.617,37
Iron anchor	m3	5,52	651.105 TZS	3.594.100 TZS	\$ 1.571,81
Concrete slab soil	m3	27,9	325.950 TZS	9.094.005 TZS	\$ 3.977,10
Column concrete	m3	7,04	651.105 TZS	4.583.779 TZS	\$ 2.004,63
Wooden columns	pcs	12	132.500 TZS	1.590.000 TZS	\$ 695,36
Bricks (20cm)	m2	411,2	44.520 TZS	18.306.624 TZS	\$ 8.006,07
Bricks (10cm)	m2	112	33.390 TZS	3.739.680 TZS	\$ 1.635,48
Drainage	ml	98	19.345 TZS	1.895.810 TZS	\$ 829,10
Subtotal				49.126.967 TZS	\$ 21.484,79
Mezzanines					
Wooden gitages	ml	124	18.550 TZS	2.300.200 TZS	\$ 1.005,95
Slabs in planks	m2	152	21.200 TZS	3.222.400 TZS	\$ 1.409,26
Wooden barrier	ml	167,2	19.875 TZS	3.323.100 TZS	\$ 1.453,30
Wooden stairs	m2	20,76	35.775 TZS	742.689 TZS	\$ 324,80
Access ramp for the disabled persons	m2	33,12	35.775 TZS	1.184.868 TZS	\$ 518,18
Subtotal				10.773.257 TZS	\$ 4.711,49
Roofing					
Wood frame	m2	558	14.575 TZS	8.132.850 TZS	\$ 3.556,76
Sheet metal roof	m2	558	18.550 TZS	10.350.900 TZS	\$ 4.526,78
Roof gutter	ml	62	31.800 TZS	1.971.600 TZS	\$ 862,24
Gutter	ml	17,6	9.275 TZS	163.240 TZS	\$ 71,39
Subtotal				20.618.590 TZS	\$ 9.017,17

Coating					
Tile wall tiles	m2	69,75	47.700 TZS	3.327.075 TZS	\$ 1.455,04
Floor tile flooring	m2	26	59.890 TZS	1.557.140 TZS	\$ 680,99
Smooth cement floor with red pigment	m2	532	6.625 TZS	3.524.500 TZS	\$ 1.541,38
Subtotal				8.408.715 TZS	\$ 3.677,40
Joinery					
Steel window glazed 150X200	pcs	9	217.300 TZS	1.955.700 TZS	\$ 855,29
Steel window glazed 150X150	pcs	18	217.300 TZS	3.911.400 TZS	\$ 1.710,58
Steel window glazed 60x150	pcs	8	106.000 TZS	848.000 TZS	\$ 370,86
Wooden doors 90x210	pcs	10	164.300 TZS	1.643.000 TZS	\$ 718,54
Steel Doors 90x210	pcs	1	254.400 TZS	254.400 TZS	\$ 111,26
Steel window glazed 90x210	pcs	2	254.400 TZS	508.800 TZS	\$ 222,51
Double glazed steel doors 180x210	pcs	1	508.800 TZS	508.800 TZS	\$ 222,51
Subtotal				9.630.100 TZS	\$ 4.211,55
Plumbing and Sanitary					
Plumbing					
PPR Adduction	ml	49	4.240 TZS	207.760 TZS	\$ 90,86
Water drain valves	ml	27	10.070 TZS	271.890 TZS	\$ 118,91
Used water drain	ml	24	18.550 TZS	445.200 TZS	\$ 194,70
Manhole	pcs	8	206.700 TZS	1.653.600 TZS	\$ 723,17
Hole	pcs	1	1.107.000 TZS	1.107.000 TZS	\$ 484,13
Septic tank	pcs	1	1.582.050 TZS	1.582.050 TZS	\$ 691,88
Subtotal				5.267.500 TZS	\$ 2.303,65
Sanitary devices					
W.C	pcs	5	318.000 TZS	1.590.000 TZS	\$ 695,36
Sink	pcs	1	233.200 TZS	233.200 TZS	\$ 101,99
Soap holders	pcs	2	18.550 TZS	37.100 TZS	\$ 16,23
Toilet paper holders	pcs	2	18.550 TZS	37.100 TZS	\$ 16,23
Mirrors	pcs	2	53.000 TZS	106.000 TZS	\$ 46,36
Urinals	pcs	3	119.250 TZS	357.750 TZS	\$ 156,46
Subtotal				2.361.150 TZS	\$ 1.032,61
Total mate rials (VAT included)				120.066.555 TZS	\$ 52.508,95
Total Workforce				30.016.639 TZS	\$ 13.127,24
Total for the construction				150.083.193 TZS	\$ 65.636,18

Quote for sewing workshop raw materials and furnitures					
Designation	Unity	Qty	Unit Price Tzs	Total Price Tzs	Total price \$
Sewing machines					
Ordinary sewing machines	Piece	50	265.000 TZS	13.250.000 TZS	\$ 5.794,65
Overcasting machine	Piece	2	1.060.000 TZS	2.120.000 TZS	\$ 927,14
Industrial Cornerie Machine de cornerie 20U33	Piece	2	1.060.000 TZS	2.120.000 TZS	\$ 927,14
Industrial Embroidery Machine	Piece	2	1.060.000 TZS	2.120.000 TZS	\$ 927,14
Subtotal for sewing machines				19.610.000 TZS	\$ 8.576,08
Furnitures					
Chairs	Piece	50	33.125 TZS	1.656.250 TZS	\$ 724,33
Ironing table 2,5mx1mx1m	Piece	2	212.000 TZS	424.000 TZS	\$ 185,43
Cutting table 2mx1mx1m	Piece	2	185.500 TZS	371.000 TZS	\$ 162,25
Closed cupboard 2mx1.40m	Piece	4	318.000 TZS	1.272.000 TZS	\$ 556,29
Office tables 1,80mx1,90mx0,8m	Piece	5	159.000 TZS	795.000 TZS	\$ 347,68
Shelves 2mx1m	Piece	9	185.500 TZS	1.669.500 TZS	\$ 730,13
Shelves 2mx0,6m	Piece	3	132.500 TZS	397.500 TZS	\$ 173,84
Shelf closed 2mx1m	Piece	6	212.000 TZS	1.272.000 TZS	\$ 556,29
Subtotal furnitures				7.857.250 TZS	\$ 3.436,23
Other furnitures					
Lay figure	Piece	10	337.875 TZS	3.378.750 TZS	\$ 1.477,64
Mirrors 1,5mx1m	Piece	3	159.000 TZS	477.000 TZS	\$ 208,61
Trash can	Piece	4	132.500 TZS	530.000 TZS	\$ 231,79
Curtains 3mx1,60	Piece	3	39.750 TZS	119.250 TZS	\$ 52,15
Curtains 4mx1,60	Piece	2	47.700 TZS	95.400 TZS	\$ 41,72
Clothing doors	Piece	2	265.000 TZS	530.000 TZS	\$ 231,79
Iron	Piece	3	132.500 TZS	397.500 TZS	\$ 173,84
Generator	Piece	1	11.925.000 TZS	11.925.000 TZS	\$ 5.215,18
Subtotal Other furnitures				17.452.900 TZS	\$ 7.632,71
Raw materials					
Scissors	Piece	50	13.250 TZS	662.500 TZS	\$ 289,73
Sewing needles	Package	50	2.650 TZS	132.500 TZS	\$ 57,95
Hand sewing needles	Package	50	2.650 TZS	132.500 TZS	\$ 57,95
Yarns of different colors	Package	50	3.975 TZS	198.750 TZS	\$ 86,92
Large sewing threads	Package	15	21.200 TZS	318.000 TZS	\$ 139,07
Matt fabrics	Roll	15	159.000 TZS	2.385.000 TZS	\$ 1.043,04
"Gentlemen" fabrics	Roll	15	212.000 TZS	3.180.000 TZS	\$ 1.390,72
Drill fabrics	Roll	6	233.200 TZS	1.399.200 TZS	\$ 611,91
"Wax" fabrics	Piece	50	47.700 TZS	2.385.000 TZS	\$ 1.043,04
Foam	Piece	50	7.950 TZS	397.500 TZS	\$ 173,84
Closures for clothing (Small)	Package	6	7.950 TZS	47.700 TZS	\$ 20,86
Closures for clothing (Big)	Package	3	13.250 TZS	39.750 TZS	\$ 17,38
Self-adhesive Viseline	Roll	6	21.200 TZS	127.200 TZS	\$ 55,63
Blankets	Piece	8	13.250 TZS	106.000 TZS	\$ 46,36
Popelynes	Roll	24	47.700 TZS	1.144.800 TZS	\$ 500,66
Polyester	Roll	24	106.000 TZS	2.544.000 TZS	\$ 1.112,57
Chalk	Boxes	10	9.275 TZS	92.750 TZS	\$ 40,56
Slats	Piece	50	1.325 TZS	66.250 TZS	\$ 28,97
Pens	Piece	50	265 TZS	13.250 TZS	\$ 5,79
Brackets	Piece	25	7.950 TZS	198.750 TZS	\$ 86,92
Large slats	Piece	6	7.950 TZS	47.700 TZS	\$ 20,86
Buttons	Package	6	10.600 TZS	63.600 TZS	\$ 27,81
Mesureing tape	Piece	50	530 TZS	26.500 TZS	\$ 11,59
Nippers	Piece	4	1.500 TZS	6.000 TZS	\$ 2,62
Sewing pattern sheets	Piece	50	265 TZS	13.250 TZS	\$ 5,79
Pins	Boxes	50	3.180 TZS	159.000 TZS	\$ 69,54
Subtotal raw materials				15.887.450 TZS	\$ 6.948,09
Grand Total				60.807.600 TZS	\$ 26.593,11

Estimated operating cost of the center			
Position title	Function	Mensual costs	Annual costs
Projects Manager (Jonathan Zaragoza)	In charge of replicating ELITE CENTER in Refugees Camps, the project manager sets up all projects and the field coordination. He is also the liaison between Friends Of Humanity, local NGOs, governments and international NGOs.		
Center director	Under the supervision of the Project manager, the Center Director will be in charge of coordinating and supervising the staff working at the Center. He/She will preferably be an engineer capable of supervising the works necessary to build and do the maintenance of the Center.	\$ 500	\$ 6.000
Communication manager	Responsible of taking photos and videos of all activities taking place in the Center, being the liason with local NGOs as well as being in charge to be in contact and carrying informal needs assesments with refugees in the camp	\$ 400	\$ 4.800
Responsible of the Women Empowerment section	This position covered preferably by a woman will be responsible of carrying out sensitization and prevention of girls and women against early pregnancy and gender violence, and ensuring and coordinating all activities and programs seeking to develop and empower women in the camp.	\$ 400	\$ 4.800
Accountant and administrative officer	Person in charge of all administrative and accounting tasks, ensuring the disbursement and collection for the various activities, salary payments, daily financial needs for the proper operation of the center.	\$ 400	\$ 4.800
Center security	Two gatekeeper being responsible of security in the Center, general logistics, and the opening and closing of the Center every day.	\$ 400	\$ 4.800
Subtotal		\$ 2.100	\$ 25.200

Estimated trainings and workshops cost				
Trainings	Position	Function	Mensual costs	Annual costs
Vocational Training and sustainable development	Chef	Responsible of the culinary art training	\$ 300	\$ 3.600
	Sewing trainers	1 responsible and his assistant for the sewing workshop	\$ 600	\$ 7.200
	Supervisor	Supervisor for soap making	\$ 300	\$ 3.600
Cultural Promotion: Arts and Music	Animator	1 Responsible of coordinating the cultural activities at the Center and his/her assistant (preferably they will both be also either musicians, artists or painters)	\$ 300	\$ 3.600
Education for peace	2 instructors	2 people (preferably expert teachers) responsible of coordinating and offering certain activities and sessions planned on the Area of Intervention on Education for Peace. Preferably they should be able to also offer course in English and French (or at least the national language), learn how to use computer tools, educational use of social	\$ 600	\$ 7.200
Time to share workshops	Pro Bono guests	2 workshops of 5 to 6 days per month on various topics and activities. The workshops will be held by external international guests who will share their know-how and their experience in a specific field.	\$ 3.000	\$ 36.000
Subtotal			\$ 4.800	\$ 57.600
Total Operating costs			\$ 6.900	\$ 82.800