



ELEVATION

WINGS OF FAITH MISSION

HOME OF HOPE ORPHANAGE CUM SCHOOL - TANUKU

SPECIFICATIONS

DOORS: 1.50M X 2.10M

WINDOWS: 1.20M X 1.20M

STRUCTURE: RCC FRAMED STRUCTURE: 1 G+2 FLOORS (3 FLOOR)

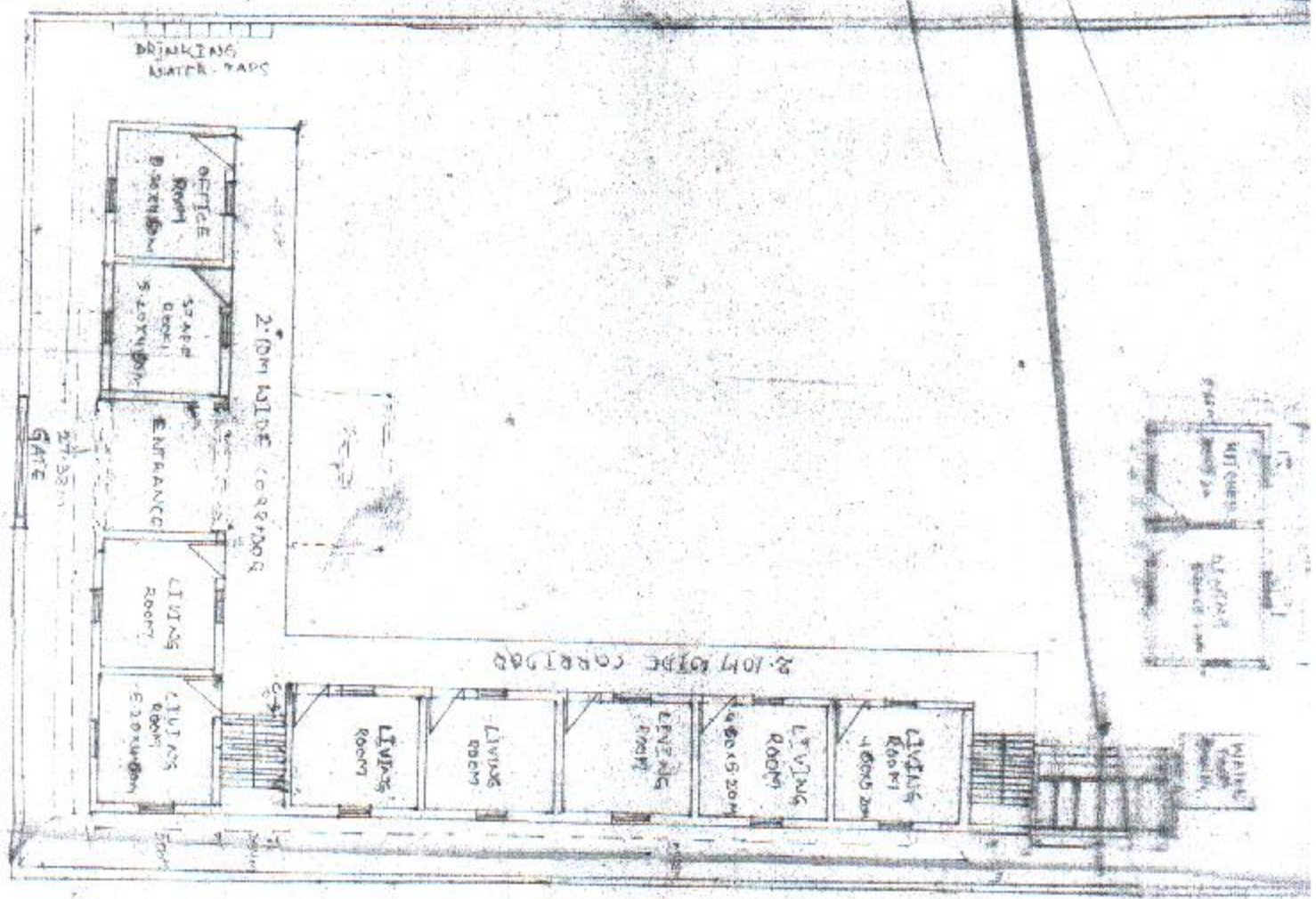
PLOT AREA: 2367 SQM

NO. OF ROOMS: 29

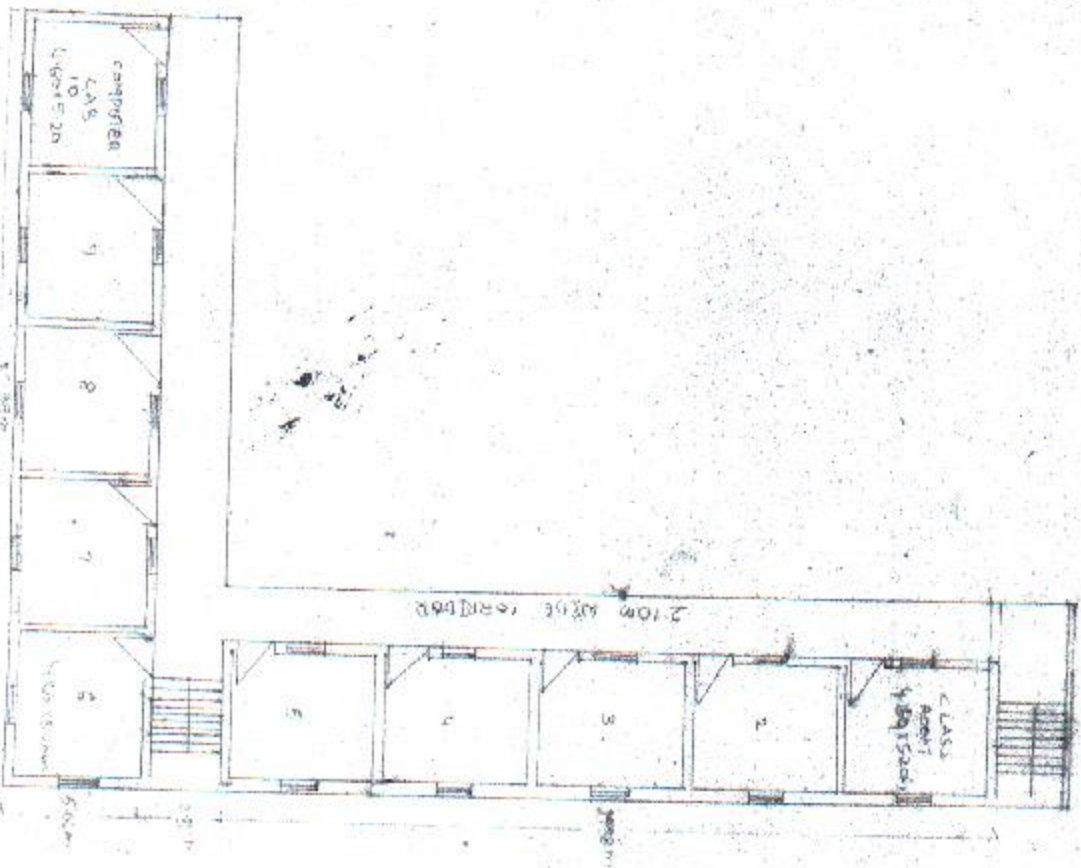
PLAN PREPARED BY

K. Ravi
K. RAVI, DCE
MUNICIPAL LICENCED SURVEYOR
TANUKU - 534-211

GROUND FLOOR



1st & 2nd FLOORS



Detailed cum abstract estimate

Name of the work: Construction of HOME OF ORPHANGE CUM SCHOOL AT TANUKU

Estimate Rs 5000 Lakhs.

SI no	Description of item	Nos	Measurements			Qty	Rate	Per	Amount
			L (M)	B (M)	D (M)				
1	2	3	4	5	6	7	8	9	10
GROUND FLOOR									
1	Earthwork excavation and depositing on banks with an initial lead and lift in LBC soils as per s.s no 20 B for foundation of footings	48	1.50	1.50	3.00	324.00 cum	62.00	1CUM	20088
2	Sand filling in foundation including cost and conveyance of sand and all labour charges etc complete for foundations	48	1.50	1.50	0.20	21.60 cum			
	Building basement	9	5.20	4.60	0.50	107.64 cum			
	corridor	1	52.20	2.10	0.50	54.81 cum			
	kitchen basement	1	3.00	5.20	0.50	7.80 cum			
	dining basement	1	5.00	5.20	0.50	13.00 cum			
	toilets basement	6	0.90	1.20	0.50	3.24 cum			
	toilets front	1	1.11	5.54	0.50	3.07 cum			
						211.16 cum	450.50	1cum	95130
3	CC (1:4:8) using 40mm HG metal including cost and conveyance of all materials and all labour charges etc complete for FOUNDATIONS	48	1.50	1.50	0.20	21.60 cum			
	Building rooms	9	5.20	4.60	0.10	21.53 cum			
	corridor	1	52.20	2.10	0.10	10.96 cum			
	kitchen	1	3.00	5.20	0.10	1.56 cum			
	dining rooms	1	5.00	5.20	0.10	2.60 cum			
	Toilets	6	0.90	1.20	0.10	0.65 cum			
		1	1.11	5.54	0.10	0.61 cum			
						59.51 cum	1850.00	1cum	110099
4	Reinforced cement concrete (1:11/2:3) using 20mm HG metal including cost and conveyance of all materials and all labour charges etc complete but excluding cost of steel and its fabrication charges etc complete for Footings	48	1.20	1.20	0.20	13.82 cum			
	flat	48	1.20	1.20	0.20	13.82 cum			
	sloped portion	48	1.20	4.45/2	0.30	9.80 cum			
						23.63 cum	4074.00		96248
5	Reinforced cement concrete (1:11/2:3) using 20mm HG metal including cost and conveyance of all materials and all labour charges etc complete but excluding cost of steel and its fabrication charges etc complete for pedestals	36	0.45	0.60	1.94	18.86 cum	5234.00	1cum	98696
6	Reinforced cement concrete (1:11/2:3) using 20mm HG metal including cost and conveyance of all materials and all labour charges etc complete but excluding cost of steel and its fabrication charges etc complete For PLINTH BEAM MAIN BUILDING	2	27.38	0.23	0.30	3.78 cum			
		1	25.28	0.23	0.30	1.74 cum			
		2	32.40	0.23	0.30	4.47 cum			
		1	30.30	0.23	0.30	2.09 cum			
		6	4.60	0.23	0.30	1.90 cum			
		7	5.20	0.23	0.30	2.51 cum			
	KITCHEN & DINING	1	26.58	0.23	0.30	1.83 cum			
	CROSS BEAM	1	5.20	0.23	0.30	0.36 cum			
	TOILETS	1	17.08	0.23	0.30	1.18 cum			
	CROSS BEAM	1	2.54	0.23	0.30	0.18 cum			
						20.05 cum	5234.00		104927
7	Reinforced cement concrete (1:11/2:3) using 20mm HG metal including cost and conveyance of all materials and all labour charges etc complete but excluding cost of steel and its fabrication charges etc complete For COLUMNS	26	0.23	0.45	3.50	9.42 cum			
		10	0.23	0.30	3.50	2.42 cum			
		12	0.23	0.23	3.00	1.90 cum			
						13.74 cum	5234.00	1cum	71904

8	Reinforced cement concrete (1:1 1/2:3) using 20mm HG metal including cost and conveyance of all materials and all labour charges etc complete but excluding cost of steel and its fabrication charges etc complete												
	FOR ROOF BEAMS	MAIN BUILDING	2	27.38	0.23	0.30	3.78	cum					
			1	25.28	0.23	0.30	1.74	cum					
			2	32.40	0.23	0.30	4.47	cum					
			1	30.30	0.23	0.30	2.09	cum					
			6	4.60	0.23	0.30	1.90	cum					
			7	5.20	0.23	0.30	2.51	cum					
		KITCHEN & DINING	1	26.58	0.23	0.30	1.83	cum					
		CROSS BEAM	1	5.20	0.23	0.30	0.36	cum					
		TOILETS	1	17.08	0.23	0.30	1.18	cum					
		CROSS BEAM	1	2.54	0.23	0.30	0.18	cum					
							20.05	cum	5450.00	1cum		109258	
9	Reinforced cement concrete (1:1 1/2:3) using 20mm HG metal including cost and conveyance of all materials and all labour charges etc complete but excluding cost of steel and its fabrication charges etc complete												
	FOR ROOF SLAB		1	27.38	7.16	0.125	24.51	cum					
			1	27.38	7.16	0.125	24.51	cum					
	STAIR CASES		2	4.07	2.34	0.125	2.38	cum					
	LANDINGS		2	1.40	2.34	0.125	0.82	cum					
	PASSAGES		2	2.10	2.34	0.125	1.23	cum					
	KITCHEN & DINING		1	9.00	6.50	0.100	5.85	cum					
	TOILETS		1	6.00	3.00	0.100	1.80	cum					
							61.09	cum	5450.00	1cum		332933	
10	Brickwork in CM(1:6) using country bricks including cost and conveyance of all materials and all labour charges etc complete												
	BUILDING BLOCKS ALL ROUND		2	63.96	0.23	3.50	102.98	cum					
	CROSS WALLS		8	4.60	0.23	3.50	29.62	cum					
	KITCHEN & DINING HALL ROUND		1	26.58	0.23	3.00	18.34	cum					
	CROSS WALL		1	5.20	0.23	3.00	3.59	cum					
	TOILETS		1	17.08	0.23	3.00	11.79	cum					
	CROSS WALL		5	2.54	0.23	3.00	8.76	cum					
	DEDUCTIONS DOORS		11	1.50	0.23	2.10	7.97	cum					
	WINDOWS		23	1.20	0.23	1.20	7.62	cum					
	MAIN ENTRANCE		2	5.20	0.23	3.50	8.37	cum					
							161.76	cum	1850.00	1cum		299256	
11	Plastering in CM(1:5) to 12mm thick including cost and conveyance of all materials and all labour charges etc complete												
	INSIDE ROOMS		9	19.60		3.50	617.40	sqm					
	OUT SIDE BUILDING		2	64.88		3.50	454.16	sqm					
	KITCHEN & DINING HALL ROUND		1	28.70		3.50	100.45	sqm					
	KITCHEN INSIDE		1	16.40		3.00	49.20	sqm					
	DINING INSIDE		1	20.40		3.00	61.20	sqm					
	TOILET BLOCK OUT SIDE		1	18.00		3.50	63.00	sqm					
	TOILET ROOMS INSIDE		6	5.40		1.80	58.32	sqm					
	FRONT		1	13.08		3.00	39.24	sqm					
	MAIN ENTRANCE SIDE WALLS		2	5.06		3.50	35.42	sqm					
	DEDUCTIONS DOORS		11	1.50		2.10	34.65	sqm					
	WINDOWS		23	1.20		1.20	33.12	sqm					
							1505.51	sqm	550.00	10sqm		82803	
12	Flooring with Tandur black stones including cost and conveyance of all labour charges etc complete												
	inside rooms		9	5.20		4.60	215.28	sqm					
	corridor		1	52.20		2.10	109.62	sqm					
	inside kitchen		1	3.00		5.20	15.60	sqm					
	dining		1	5.00		5.20	26.00						
	for toilets		6	0.90		1.20	6.48						
			1	1.11		5.54	6.15						
							379.13						

13	painting with white cement including cost and conveyance of all materials and all labour charges etc complete	INSIDE ROOMS	9	19.60		3.50	617.40 sqm			
		OUT SIDE BUILDING	2	64.88		3.50	454.16 sqm			
		Rooms ceilings	10	5.20		4.60	239.20 sqm			
		Corridor ceiling	1	52.20		2.10	109.62 sqm			
		KITCHEN & DINING HALL ROUND	1	28.70		3.50	100.45 sqm			
		KITCHEN INSIDE	1	16.40		3.00	49.20 sqm			
		DINING INSIDE	1	20.40		3.00	61.20 sqm			
		TOILET BLOCK OUT SIDE	1	18.00		3.50	63.00 sqm			
		TOILET ROOMS INSIDE	6	5.40		1.80	58.32 sqm			
		FRONT	1	13.08		3.00	39.24 sqm			
		MAIN ENTRANCE SIDE WALLS	2	5.06		3.50	35.42 sqm			
	DEDUCTIONS	DOORS	11	1.50		2.10	34.65 sqm			
		WINDOWS	23	1.20		1.20	33.12 sqm			
							1759.44 sqm	525.00	10sqm	92371
14	Cost and supply of country wood doors of size 1.5x2.10m including cost and conveyance of all materials and all labour charges etc complete		11				11.00 nos	5250.00		57750
15	Cost and supply of country wood doors of size .90x2.10m of flush doors including cost and conveyance of all materials and all labour charges etc complete for toilets		6				6.00 nos	3000.00		18000
16	Cost and supply of countrywood window of size 1.2x1.20m including fixing of iron grills including cost and conveyance of all materials and all labour charges etc complete		23				23.00 nos	4800.00		110400
17	Cost and supply of steel including its fabrication charges etc complete						6.50 tonnes	50000.00	1T	325000
FIRST FLOOR										
18	Reinforced cement concrete (1:1 1/2:3) using 20mm HG metal including cost and conveyance of all materials and all labour charges etc complete but excluding cost of steel and its fabrication charges etc complete For COLUMNS		26	0.23	0.30	3.50	6.28 cum			
			10	0.23	0.30	3.50	2.42 cum			
							8.69 cum	5359.00	1cum	46591
19	Reinforced cement concrete (1:1 1/2:3) using 20mm HG metal including cost and conveyance of all materials and all labour charges etc complete but excluding cost of steel and its fabrication charges etc complete FOR ROOF BEAMS MAIN BUILDING		2	27.38	0.23	0.30	3.78 cum			
			1	25.28	0.23	0.30	1.74 cum			
			2	32.40	0.23	0.30	4.47 cum			
			1	30.30	0.23	0.30	2.09 cum			
			6	4.60	0.23	0.30	1.90 cum			
			7	5.20	0.23	0.30	2.51 cum			
							16.50 cum	5575.00	1cum	91991
20	Reinforced cement concrete (1:1 1/2:3) using 20mm HG metal including cost and conveyance of all materials and all labour charges etc complete but excluding cost of steel and its fabrication charges etc complete FOR ROOF SLAB		1	27.38	7.16	0.125	24.51 cum			
			1	27.38	7.16	0.125	24.51 cum			
		STAIR CASES	2	4.07	2.34	0.125	2.38 cum			
		LANDINGS	2	1.40	2.34	0.125	0.82 cum			
		PASSAGES	2	2.10	2.34	0.125	1.23 cum			
							53.44 cum	5575.00	1cum	297920
21	Brickwork in CM(1:6) using country bricks including cost and conveyance of all materials and all labour charges etc complete	BUILDING BLOCKS ALL ROUND	2	63.96	0.23	3.50	102.98 cum			
		CROSS WALLS	8	4.60	0.23	3.50	29.62 cum			
	deduction:	DOORS	11	1.50	0.23	2.10	7.97 cum			
		WINDOWS	23	1.20	0.23	1.20	7.11 cum			
							148.			

33	painting with white cement including cost and conveyance of all materials and all labour charges etc complete	INSIDE ROOMS	10	19.60		3.50	686.00 sqm			
		OUT SIDE BUILDING	2	64.88		3.50	454.16 sqm			
		Rooms ceilings	10	5.20		4.80	239.20 sqm			
		Corridor ceiling	1	52.20		2.10	109.82 sqm			
							1488.98 sqm	600.00	10sqm	89339
34	Flooring with Tandur black stones including cost and conveyance of all labour charges etc complete	inside rooms	10	5.20	4.60	0.10	23.92			
		corridor	1	52.20	2.10	0.10	10.96			
							34.88 sqm	475.00	sqm	16569
35	Cost and supply of country wood doors of size 1.5x2.10m including cost and conveyance of all materials and all labour charges etc complete		10				10.00 nos	5250.00	1no	52500
36	Cost and supply of countrywood window of size 1.2x1.20m including fixing of iron grills including cost and conveyance of all materials and all labour charges etc complete		20				20.00 nos	4800.00	1no	96000
37	Cost and supply of steel including its fabrication charges etc complete						3.50 tonnes	50000.00	1T	175000
38	Provision for providing water supply including construction of 5000lts capacity of water tank and providing taps etc complete									80000
39	Provision for construction of compound wall									200000
40	provision for providing sanitary arrangements									10000
41	Provision price escalation of materials									27113
										5000000


K. RAVI, DCE
MUNICIPAL LIENCED SURVEYOR
TANUKU - 534 211

WINGS OF FAITH MISSION

PERAVALI .. W.G.DL.
TANUKU


HOSTEL MAINTENANCE BUDGET FOR 50 CHILDREN

RICE ::	PER DAY 20 Kilos X 30 DAYS = 600 Kilos @ Rs. 20/- per Kg	12,000.00
VEGETABLES::	9 Kilos PER DAY x 30 DAYS = 270 Kilos X Rs.15/-AVERAGE PER Kilo	4,050.00
CHICKEN::	8 Kilos IN A WEEK x 4 WEEKS = 32 Kilos x Rs.90/- per Kilo	2,880.00
EGGS ::	50 IN A WEEK x 4 WEEKS = 200 EGGS x Rs.2.50 PER EGG	500.00
GROCERIES ::	(ALL INCLUDING DALLS, OIL AND OTHER ITEMS)	8,500.00
COOKING FUEL ::	GAS 2 CYLINDERS	2,200.00
SOAPS BATH SOAPS	50 x Rs.12 PER SOAP	600.00
SOAPS WASHING SOAPS	50 x Rs.10 PER SOAP	500.00
SHAMPOOS	4 IN A MONTH PER 50 = 200 X Rs.1 PER PACKET	200.00
COCONUT OIL (FOR HAIR)		
SCHOOL STAFF SALARIES	3 TEACHERS x Rs 2500/- PER EACH	7,500.00
HOSTEL STAFF ::	WARDEN 2000	
	COOKS 2 3500	
	HELPER 1500	7,000.00
HOSTEL BUILDING RENT		5,000.00
ELECTRICITY CHARGES		2,000.00
TELEPHONE CHARGES		1,000.00
HOSTEL BUILDING REPAIRS & MAINTENANCE		2,000.00
OFFICE MAINTENANCE , TRAVEL,TRANSPORTATION ETC., MISCELLANEOUS EXP.		3,000.00
		<u>58,930.00</u>

CHILDREN HOME TOTAL BUDGET PER MONTH ROUNDED TO
YEARLY BUDGET :: RS.60000 x 12 MONTHS = Rs.7,20,000 OR U.S.\$ 15,000

WIDOWS SUPPORT 15 WIDOWS x 500 EACH PER MONTH = Rs.7,500
YEARLY BUDGET :: RS.7500 x 12 MONTHS = Rs. 90,000 OR U.S.\$ 1,875

For Wings of Faith Mission


D BRENNAN
PRESIDENT

