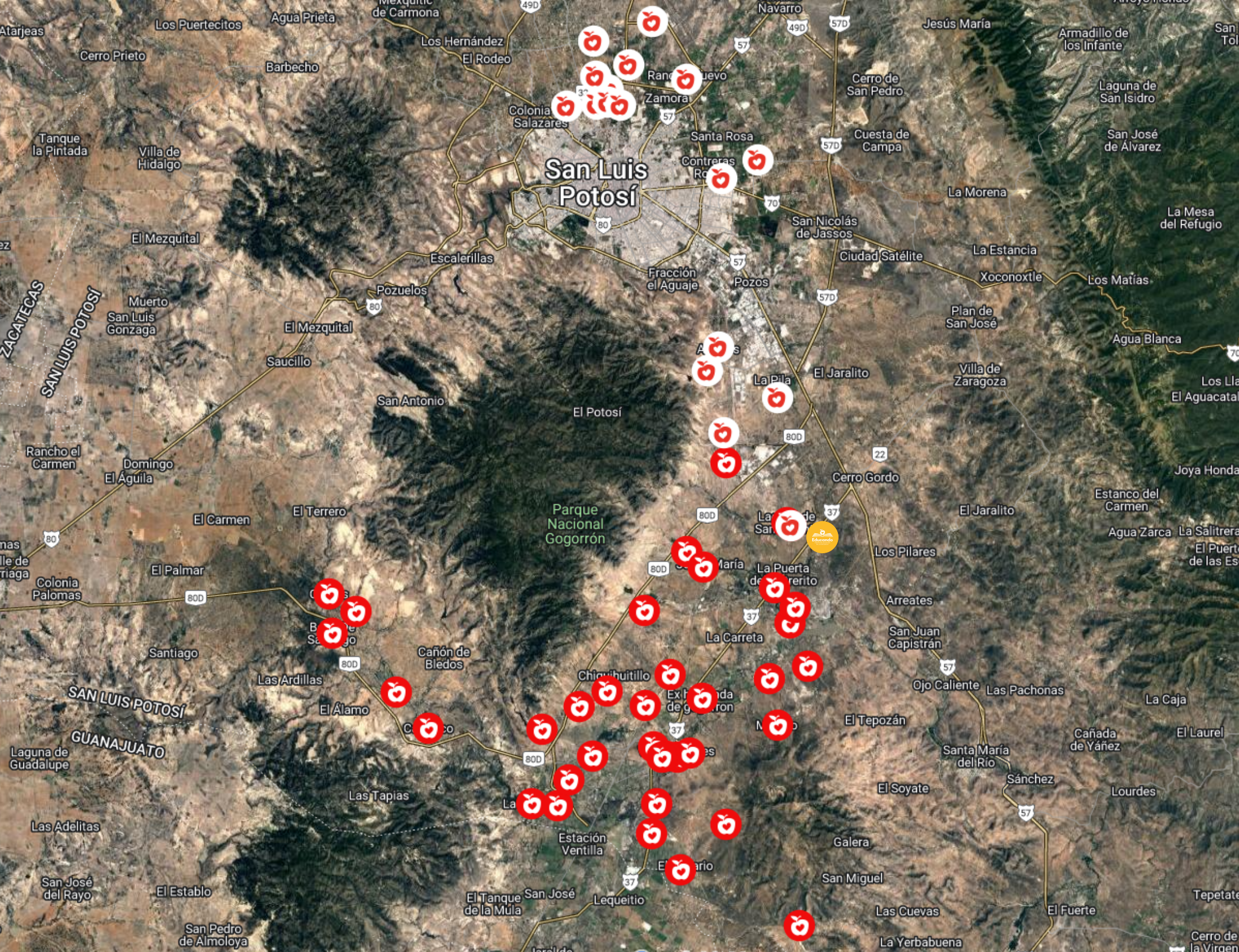


# REPORT 2022



**Nutriendo**  
nutriendo.org







## BOARD

**Alberto Rangel**  
PRESIDENT

**Cecilia Mancilla**  
VICE PRESIDENT

**Gabriela Motilla**  
SECRETARY

**Sergio Godínez**  
TREASURER

## BOARDMEMBERS

Vicente Rangel  
Cecilia Rangel  
Marcelo de los Santos  
Ricardo Gómez  
Celeste Rebora  
Arturo Díaz Infante  
José López Aguirre  
Humberto Abaroa  
Jesús Díaz Infante  
Ernesto Martínez

## 2022

### OUR CONTRIBUTION TO THE SUSTAINABLE DEVELOPMENT GOALS SET BY THE UNITED NATIONS



AIDED 4,467  
CHILDREN IN  
MARGINALIZED  
COMMUNITIES



227,310 BREAKFASTS, &  
167,340 NUTRIENDO  
PROTEIN SHAKES



4,189 NUTRITIONAL  
DIAGNOSTICS  
495 DENTAL  
CONSULTATIONS



INFRASTRUCTURE  
IMPROVEMENTS OF  
10 SCHOOLS



69 SCHOOLS &  
COMMUNITIES  
BENEFITED



58 TREES PLANTED  
THROUGH  
REFORESTATION  
PROJECTS



30 YEAR TRAJECTORY  
AS A CERTIFIED NGO  
ORGANIZATION  
THROUGH CEMEFI



5 AGREEMENTS SIGNED  
& 25 ADDITIONAL  
CORPORATE SPONSORS



## ATTENTION CARE MODELS

**360**

**ROUTE**

YEAR	CHILDREN	SCHOOLS
2021	1,440	18
2022	2,153	22

YEAR	CHILDREN	SCHOOLS
EST. MAY 2022	2,314	49

2021

**Children Benefited**  
1,440  
**Communities**  
18 Communities  
3 Municipalities  
**Schools**  
20  
**Breakfasts**  
23,500  
**Nutriendo Protein Shakes**  
N/A

**Children Benefited**  
4,467  
**Communities**  
64 Communities  
3 Municipalities  
**Schools**  
69  
**Breakfasts**  
227,310  
**Nutriendo Protein Shakes**  
167,340

2022

In 2021, due to the COVID-19 Pandemic, breakfasts were provided from September 2021. This was done following all necessary protocols, through a staggered school attendance program.

# FINANCIAL STATEMENTS

Our financial statements are endorsed by Moore Stephens,  
Marcelo De Los Santos & Cía., S.C.



Fundación Nutriendo para el Futuro, A.C Financial Statements  
as of December 31, 2021 and 2022 (Figures in USD EXCHANGE RATE OF 18 PESOS)

	2022	2021
<b>UNRESTRICTED EQUITY INCOME:</b>		
CASH CONTRIBUTIONS	\$ 791,761.00	\$ 412,749.00
CONTRIBUTIONS IN KIND	\$ 9,417.00	\$ 6,507.00
	<u>\$ 801,178.00</u>	<u>\$ 419,256.00</u>
<b>EXPENSES:</b>		
GENERAL EXPENSES:	\$ 508,874.00	\$ 373,167.00
ADMINISTRATIVE EXPENSES:	\$ 13,295.00	\$ 452.00
TOTAL EXPENDITURES	<u>\$ 522,169.00</u>	<u>\$ 373,619.00</u>
<b>CHANGE IN ACCOUNTING EQUITY</b>	<b>\$ 177,331.00</b>	<b>\$ 32,241.00</b>
<b>COMPREHENSIVE FINANCING RESULT</b>		
EXCHANGE LOSS		
EARNED INTERESTS	(46011.00)	(21130)
	<u>-\$ 46,011.00</u>	<u>-\$ 21,130.00</u>
<b>NET CHANGE IN STOCKHOLDERS 'EQUITY</b>	<b>\$ 223,342.00</b>	<b>\$ 53,371.00</b>
<b>INITIAL EQUITY UNRESTRICTED</b>	<b>\$ 664,387.64</b>	<b>\$ 611,016.00</b>
<b>FINAL UNRESTRICTED EQUITY</b>	<b>\$ 887,730.00</b>	<b>\$ 664,388.00</b>

San Luis Potosí, S.L.P. February 27, 2023

Salaries are donated by Grupo Valoran.

Our Financial Statements are endorsed by Moore Stephens, Marcelo De Los Santos and Cía., S.C.

Operation of the Nutriendo Care Models, communication and fundraising.

5% administrative expenses and 5% management expenses.

**1,220**  
**SPONSORS**



**Educando**

CENTRO DE EDUCACIÓN  
EN LA EXCELENCIA

**OUR FIRST GROUP OF 30 CHILDREN  
STARTED THEIR EDUCATIONAL  
CAREER IN SEPTEMBER 2022**



HIGH STANDARD  
FACILITIES



DAILY SCHEDULE  
8 AM TO 4 PM



DAILY ENGLISH  
CLASSES



HIGHLY QUALIFIED  
TEACHERS



BREAKFAST & LUNCH  
INCLUDED



CHARACTER  
DEVELOPMENT



NO REGISTRATION OR  
TUITION FEES

