



# ONI's History

**“Our greatest natural resource is the  
minds of our children”**

**Walter Elias Disney**



# Social Object

**“Provide adequate nourishment, through scientific control, to children in the early stages of development and that because of their poverty they don’t have access to that nourishment and give the mothers, or people in charge of the children, instruction about care and child nutrition”.**

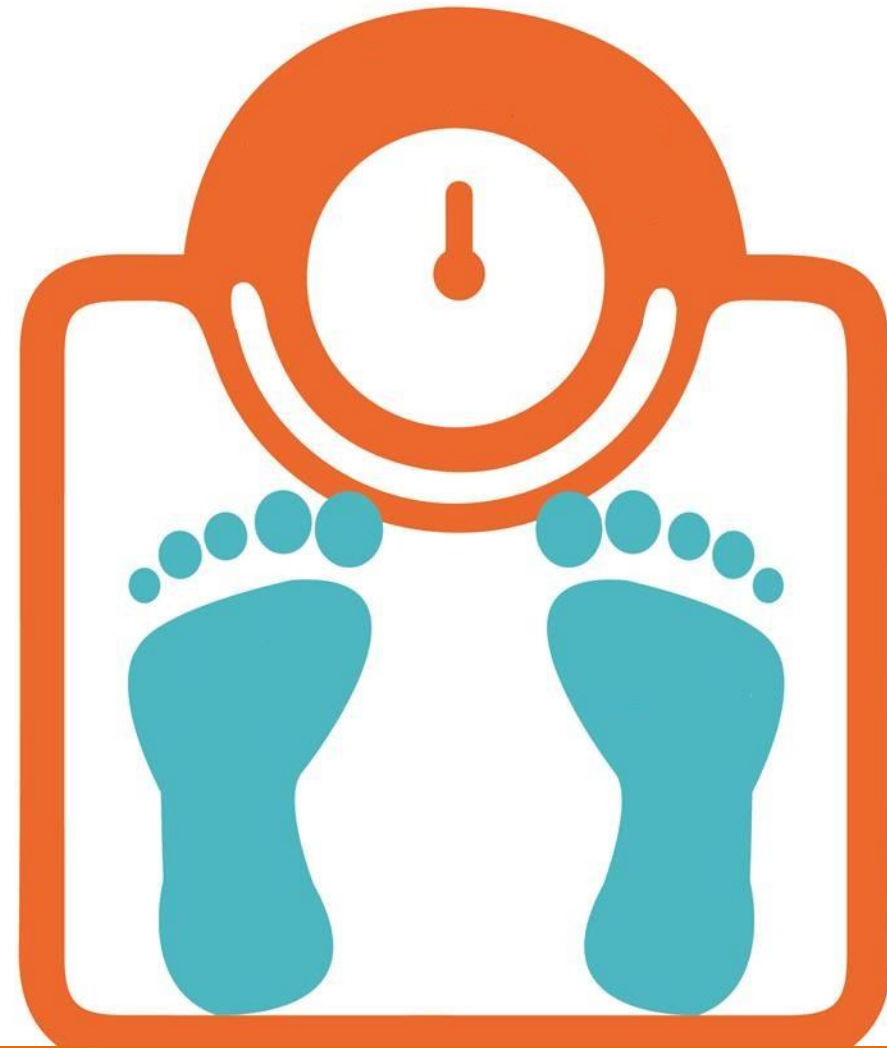
*Constitutive Act 1955*



# WHY ATTENDING MALNUTRITION?

At **ONI** we attend **undernourishment and obesity**; we found the main line that allows us to **attend both cases in one action line.**

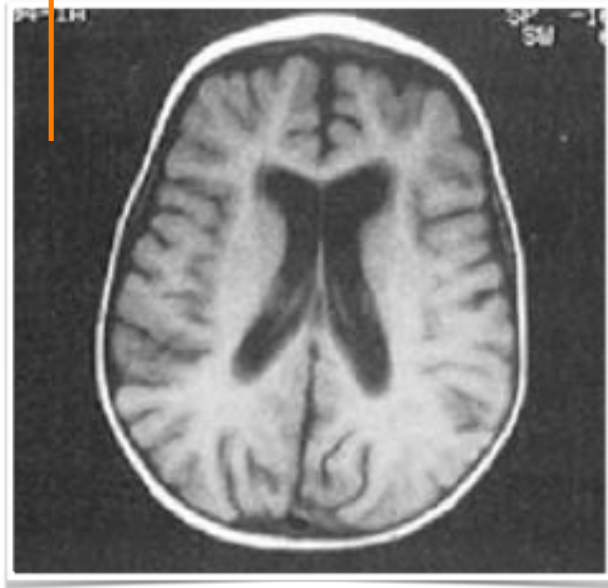
“An **undernourished child** won’t develop properly, while a **child with obesity** is susceptible to present chronic diseases”



# 1000 Days

The goal: **Save Brains**

Brain of an undernourished child under 12 months.



Brain of a properly nourished child.



**Source:** Mönckeberg F, Albino A, Desnutrición "El mal oculto". 1.<sup>a</sup> ed.p. 105. Mendoza: Caviar Blue; Córdoba: Andina Sur. 2004.

# SYMPTOMS OF MALNUTRITION



Small and low weight

Difficulty in learning

Bumped belly

Languid and sad

Constantly

Flabby muscles

Bad teeth





# OUR INTERVENTION MODEL

## Nutrition

We provide weekly endowments of nutritional complement for children in different service centers. We provide a complete follow-up of the nutritional status and periodically evaluate the impact of the program.

## Education

A multidisciplinary team lead by social workers qualifies ONI's program moms in several areas, such as: nutrition, pregnancy, disease prevention, and hygiene, among others.



# How we work?

**Production  
Plant**



**Products**



**Centers**



**Nutritionists**

**Social  
Workers**

**Education**

**Voluntaries**

**Consulting and  
deliverance of  
product**

**ONI Mom**



**ONI Children**





# OUR PRODUCTION PLANT



## Current Presence

Jalisco  
Nayarit  
Guerrero

## Presence by alliances

Culiacán  
Yucatán  
Chiapas  
Colima  
Ciudad de México  
San Luis Potosí  
Veracruz  
Chihuahua  
Sinaloa





# Relevant Information

**220,000**  
Children  
attended

(Up to date)

**7,000**  
Children  
in list

Children in 2020  
list, attended  
weekly.

**40 + 150**

40 Employees  
and more than  
150 volunteers.

**71 Centers**

**\*57**  
Metropolitan  
Area

**\*10 Sierra**  
(Indigenous  
area)  
Jalisco/Nayarit

**\*4 Guerrero**

# OUR SERVICES

Nutritional complement

Anthropometry

Nutritional orientation

Hemoglobin, vitamins  
and albendazole

Education Program

Recipes

ID Card

Campaigns

Canalizations

Case file

Follow - up

Monitoring

Socio-economic  
studies



Over more than 66 years we've been able to fight children malnutrition, but it hasn't been easy.

Only because of the help of people compromised with their society, ONI's labor has reached more children in need.

In order to keep fighting against malnutrition:

**We need you!**



@ONImexico



@ONI\_mexico



Organismo de Nutrición  
Infantil A.C.



GlobalGiving



[www.oni.org.mx](http://www.oni.org.mx)