

# Closer to Home Appeal



Give hope. Help cope.  
[tenovuscancercare.org.uk](http://tenovuscancercare.org.uk)

**tenovus**  
cancer care  
gofal cancer

“ I don't know how much **time** I've got left, so having my treatment quickly and not travelling as far is a real **blessing.** ”



Cancer will affect all of us at some point. I've lost several close friends to this awful disease, which is why I'm so passionate about supporting Tenovus Cancer Care and their 'Closer to Home' appeal.

Thanks to Tenovus Cancer Care, Wales is leading the way in collaborative and patient-focussed cancer treatment. They're at the forefront of designing cancer services around the needs of the patient, and the Mobile Support Units are an excellent example of how Welsh innovation really can change lives.

I believe it's our responsibility, in the business and wider communities, to pull together and help expand this pioneering service. This is an opportunity to give something back to your community, engage with your staff and show what Wales can really do!

So please, join me in rising to the challenge. Support Tenovus Cancer Care's 'Closer to Home' Appeal and make a difference to cancer patients and their families in your community.



**Brian Lakin**  
**Chairman Sigma 3 Kitchens and Appeal Chair**

A handwritten signature in dark ink that reads "Brian Lakin". The signature is written in a cursive, flowing style.

The Tenovus Cancer Care Mobile Support Units offer cancer patients more than lifesaving treatment; they are a haven where patients can get the support they need without the stress and expense of going to hospital.

I've seen first-hand the difference the Mobile Support Units make to cancer patients and their loved ones. They're so spacious, user friendly, convenient and comfortable. It's a completely different feel to hospital and I can totally understand how patients find this a much better way of receiving treatment.

Nothing can make having chemotherapy easy. But by travelling into the heart of the community, the Mobile Support Units cut down on the amount of time patients have to spend getting to hospital and give them more time to spend with the people they love.

As with many families across the country, people I love have been affected by cancer. That's why I'm supporting Tenovus Cancer Care as it aims to expand this vital service, and I hope you will join me. Help us make this happen, and make life better for people going through chemotherapy.



**Sam Warburton**  
**Appeal Patron**

“ I found the Mobile Support Unit to be a far quieter, more comforting and relaxed environment than a busy hospital ward. The staff were incredibly kind and helpful and made such an effort to help me cope better with my treatment. ”

**Sarah**

## Closer to Home

Right now there are around 130,000 people living with cancer in Wales. And every year 19,000 more will receive this devastating diagnosis.

In 1943 ten local businessmen came together to help people in their local community, and founded Tenovus Cancer Care. Nearly 75 years on, community is still at the heart of what we do. Our aim is to provide support and treatment to people with cancer and their loved ones, closer to home.

We understand the unique challenges faced by people in Wales, like rurality, poor access to care and deprivation. So eight years ago we developed an innovative service that would help address those challenges and make cancer treatment fairer. We pioneered the very first mobile cancer treatment in

Wales, one of the first services of its kind in the UK. Instead of asking patients to travel long distances for their treatment, we took the treatment to them.

Today we run two Mobile Support Units which deliver treatment in local communities. But demand is growing and we urgently need to build a third Unit to expand the service. Without the extra capacity we simply won't be able to reach the people who need us most; members of your community, a brother, a daughter or friend.

This is your opportunity to shape the future of cancer treatment in Wales. To help build a legacy of cancer care and improve the lives of thousands of patients for many years to come.





“ You can park right alongside, instead of queuing and paying a small fortune like at the hospital. In the time I would have been queuing in the hospital car park I’ve come in here, had my treatment, and gone home again! It’s just fantastic.”

**Albert**



## Caring for Wales

Shockingly, cancer rates in Wales are 14% higher than in England, and patients here can travel up to 150 miles for treatment. That means every round trip to hospital can cost nearly £70 and if someone relies on public transport, these journeys can take hours.

A course of chemotherapy can take anything from six weeks to six months, and sometimes longer. Some patients will need to have treatment until the end of their lives. That's a lot of journeys to hospital and every year our Mobile Support Units save cancer patients around 45,000 miles.

Our two current Units go to different communities every day. We treat patients in Cardiff, Cwmbran, Swansea, Bridgend, Merthyr Tydfil, Carmarthen, Aberystwyth, Lampeter, Milford Haven and Haverfordwest. We set up in local car parks, supermarkets and community venues where patients can park right outside, for free. We give a wide range of treatments on board including Herceptin, FEC, Zometa, Velcade and Denosumab.

We've recently expanded and now deliver specialist chemotherapy for people who have cancers of the blood like myeloma. We're also introducing cutting-edge immunotherapy treatments, an exciting new form of cancer care which harnesses the power of a patient's immune system to fight the cancer from within.

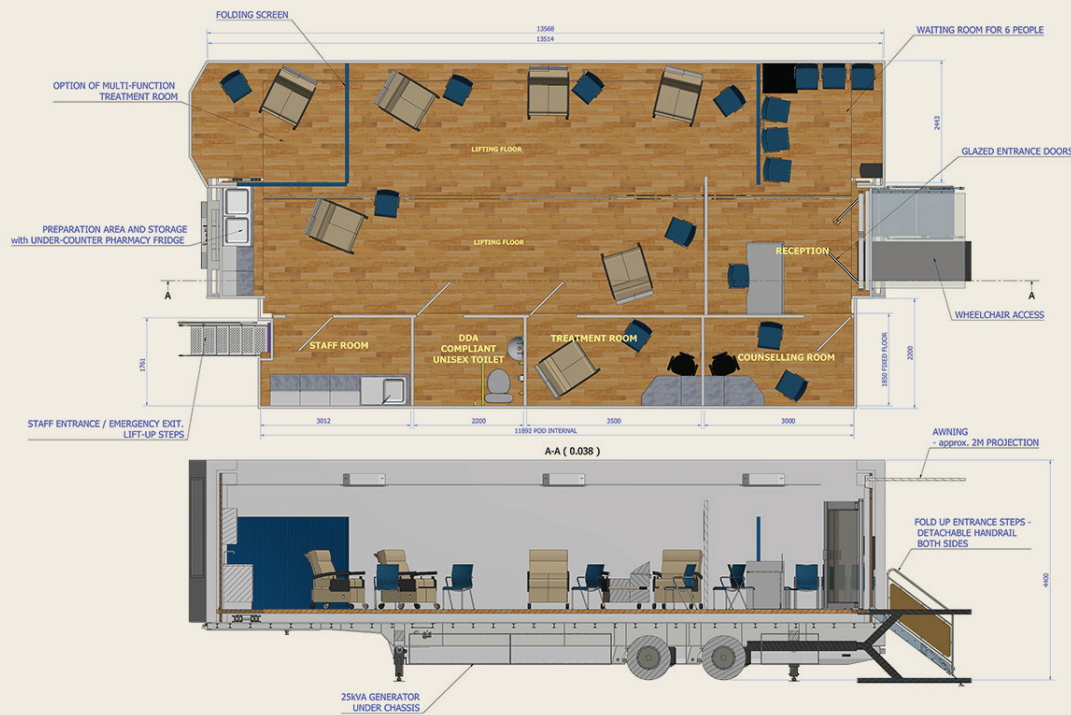
Our Units also help with the hidden costs of cancer. Taking time off work for treatment can leave many patients struggling financially, so we run Saturday chemotherapy sessions too. It's the only place in Wales where outpatients can have their chemotherapy on a Saturday.

Our Mobile Support Units take pressure off overstretched cancer centres that are already struggling to hit waiting time targets. We're bringing the cost of cancer down. Not just for patients, but for Wales too.

# Our vision

Our new Mobile Support Unit will be over 60% bigger than our first one, making it the largest mobile chemotherapy unit in the world.

We'll have space for eight patients at a time to receive treatment, counselling and advice on exercise and diet. During its lifetime this Unit could deliver over 125,000 treatments, saving patients precious time and money, when they can least afford it. Our vision is that one day, every cancer patient in Wales could benefit from this service.





“ I’m a working mum, so having my chemotherapy on the Mobile Support Unit was brilliant. It was closer to where I live and much easier to park. There were less people having treatment at the same time, so fewer delays and I was able to get back to work quicker. ”

**Gemma**

## The future cancer patients in Wales deserve


Over the last ten years cancer rates in Wales have increased by 14% and our cancer centres are stretched to breaking point. It’s vital we take the next step and expand this service, to meet this ever-growing demand.

Currently we’re only able to deliver treatments to around 1,000 patients a year, but there are so many more people that could benefit from this service. We urgently need to raise £1 million to design, build and equip our third state-of-the-art Mobile Support Unit and implement a new service delivery model.

Our new Unit will be designed to the highest specification and fitted with the latest healthcare equipment and technology. This will mean we’ll be able to offer treatments which have never before been given outside of hospital. We’ll be able to see patients with a wider range of cancers and support even more people.

Our aim is to take our Mobile Support Unit into every Health Board in Wales so every patient has the opportunity to benefit from this innovative service.

Our new Unit will have a lifespan of around 15 years. As part of this project, we’re working on a new delivery model with the aim of the service being fully self-funded within two years. This model will see us work in partnership with Welsh Health Boards to create a sustainable service which is cost-effective for the charity, and saves the NHS money.

A woman with short brown hair and glasses is sitting in a hospital bed. She is wearing a black and white patterned top. To her left is a medical infusion pump. She is holding a small mug with a picture of a boat. The background shows a window with blue curtains and a view of green hills.

“ I normally work Monday to Friday, so when the doctor told me I could have my treatment on the Mobile Support Unit on a Saturday I jumped at the chance. It’s much, much easier. I would tell anyone who was working, to go to the Unit on a Saturday. You’re in and out – no hanging about like at the hospital.”

**Claire**



“ Being able to have treatment weekly on my doorstep in Cwmbran was unbelievable! If I had to travel to hospital every week it would have cost a fortune over a six month period. ”

**Linda**

## More than treatment

Our new Mobile Support Unit will be more than just somewhere patients have their chemotherapy. Patients who come to us will benefit from a complete package of cancer treatment, support and care. All designed to help them get better, all in one place.

Diet, exercise and managing stress all play a part in how well people respond to treatment, recover and whether cancer recurs. The Unit will be a space for a holistic approach to cancer care and education. Patients will be able to see a specialist advisor who can talk to them about how to eat well, and how exercise can help during treatment and recovery. We'll also have a qualified counsellor who'll be able to talk to patients about their mental health. Stress plays an important part in immune function,

so mental wellbeing during and after cancer treatment is really important.

People who live in rural areas are less likely to take part in clinical trials that can drastically improve their outcomes. To take part in a trial, patients need to have more frequent appointments so they can be monitored regularly. This means even more journeys to hospital. For many patients on low incomes, that's just not an option. We're hoping to be able to run clinical trials on board our Mobile Support Unit in future, so that more patients have the opportunity to take part and benefit from the very latest cancer treatments.

This coordinated approach to cancer treatment and care is unique. It's a world-first and we're doing it right here in Wales.





“ It’s a lovely, friendly, professional environment that I can get to quickly and easily and not wait long for my treatment. An absolute godsend when Rory needs to come with me. ”

Debbie

## A legacy of cancer care

To secure the future cancer patients in Wales deserve, we need to raise £1 million for our third, state-of-the-art Mobile Support Unit.

Our target will cover the cost of the design, development and build, the equipment needed for treatment, and initial delivery of the service over two years to allow it to become fully self-funding.

Initial project planning and development	£5,000
Design, build and fit out of treatment trailer unit	£562,000
Purchase of tractor cab	£80,000
Purchase, delivery and installation of medical equipment	£30,000
Project management (over 18 months)	£25,000
Service launch and delivery	£298,000
<b>Total</b>	<b>£1,000,000</b>

All prices include VAT and are estimated based on quotes as of November 2016.  
Any money raised in excess of the amount needed for this project, will go towards other Tenovus Cancer Care Mobile Support Unit services.

## What we can offer you in return for your generous support?

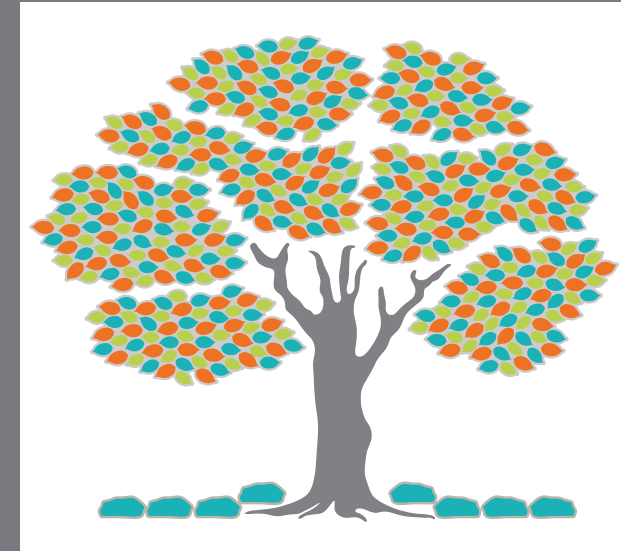
There are many opportunities to sponsor and name elements of this new Mobile Support Unit. You could sponsor one of our treatment, counselling or education rooms, cover the cost of a chemotherapy chair, have your company logo on the outside of the Unit, name the cab, or take a leaf on our beautiful donor tree. All of these can be discussed in more detail with our Appeal Committee members.

But of course the greatest reward will be the knowledge that you've genuinely changed the lives of people with cancer in your community. That, should they ever need it, our Mobile Support Unit will be there for your employees, neighbours, friends or family.

## Be a part of something remarkable

This is your opportunity to help shape the future of cancer treatment in Wales and create a lasting legacy. The investment we're looking for is substantial, but with your support we can overcome the challenge and create something that will impact the lives of thousands of cancer patients for many years to come.

So, please join us so we can achieve our aim of bringing cancer treatment closer to home for Wales.



Artist's impression of our donor tree.

To discuss how you can get involved with this innovative project for Wales please contact:

### **Brian Lakin**

Chairman Sigma 3 Kitchens and  
'Closer to Home' Appeal Chair

[brian.lakin@tenovuscancercare.org.uk](mailto:brian.lakin@tenovuscancercare.org.uk)

029 2076 8850



In my many years as a Cancer Specialist, I have seen incredible improvements in cancer care. The results, especially in my speciality breast cancer, have been impressive. Many more thousands of women in Britain are now cured from breast cancer compared to when I started out in my career. Generally, the side effects from cancer treatment are also thankfully less than they once were.

Chemotherapy used to be very difficult for our patients, and still can be for some. The newer cancer drugs often can be taken by patients closer to home, and with fewer side effects.

Tenovus Cancer Care now offers our patients a wonderful new option with their Mobile Support Units.

Their state-of-the-art treatment units come with expertly trained chemotherapy staff, all in a warm, friendly and comfortable atmosphere. Patients can visit them at local supermarkets, community centres, sports clubs and other venues, providing a convenient and timely way to receive their treatment. For some patients this is an enormous benefit compared to travelling to and from hospital.

On behalf of cancer patients, thank you, Tenovus Cancer Care.

**Professor Peter Barrett-Lee**  
**Professor of Breast Cancer Studies & Medical Director,**  
**Velindre Cancer Centre**



“ Someone is sitting in the shade today because someone planted a tree a long time ago.”

“ Having benefited from the ‘shade’ of Tenovus Cancer Care’s treatment, care and support myself, I want to make sure it’s available for others in the future.”

Supported by



**Give hope. Help cope.**  
**[tenovuscancercare.org.uk](https://tenovuscancercare.org.uk)**

Gleider House, Tŷ Glas Road, Cardiff CF14 5BD.  
Registered Charity Number 1054015.

