

# Planting prosperity in the Peruvian Sierra

Dear Donors

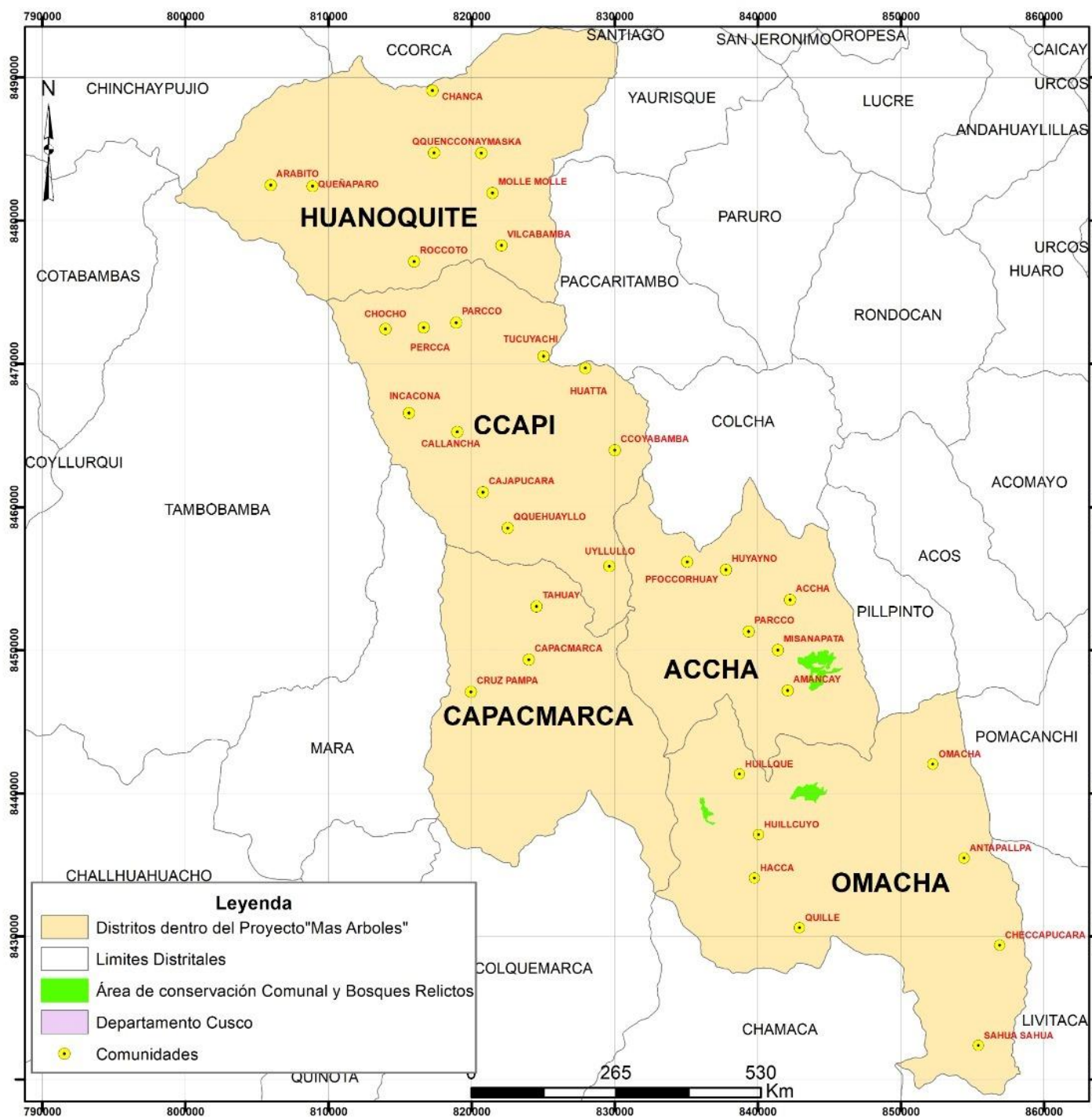
***We have planted more than 1400 hectares of trees for the future.***

It was hard work by the peasant families and the entire Pachamama Raymi team. We did the georeferencing of what was planted and we took advantage of doing the georeferencing of the next planting campaign for 2024. Preparing the maps of each plot of planted trees has taken its time, and they have turned out great. Now each community has the maps in their hands.

The communities are proud and happy of the goals achieved!



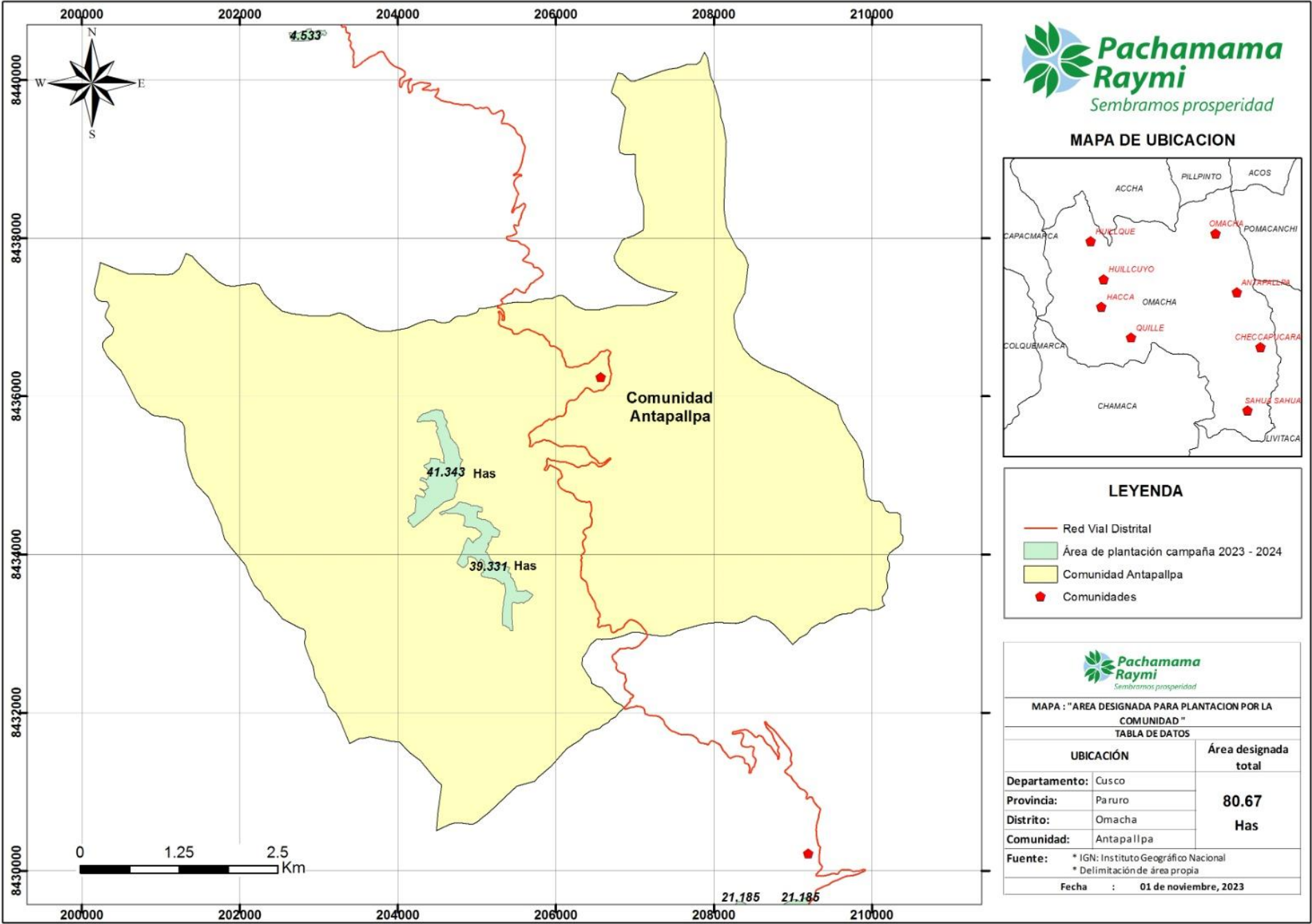
## Intervention areas and participating communities of the Project



PROYECTO "MAS ARBOLES – BONOS DE CARBONO, MANEJO FORESTAL Y RESTAURACIÓN DE TIERRAS DEGRADADAS EN LA PROVINCIA DE PARURO Y CHUMBIVILCAS"			
MAPA: "Áreas de conservación dentro del proyecto"			
TABLA DE DATOS			
UBICACIÓN		Fuente	
Departamento:	Cusco	IGN: Instituto Geografico Nacional. MINAN: Ministerio del Ambiente.	PLANO N°: PP-02 B
Provincia:	Paruro y Chumbivilcas		
Distrito:	Accha Capacmarca Capi Huanquite Omacha		
Sistema de Proyeccion: UTM	DATUM:		
ZONA UTM:	WGS84		
18S Y 19S	Cuadrícula: L		
Fecha: 29 de enero del 2024			

Map of the  
Community of  
Antapallpa

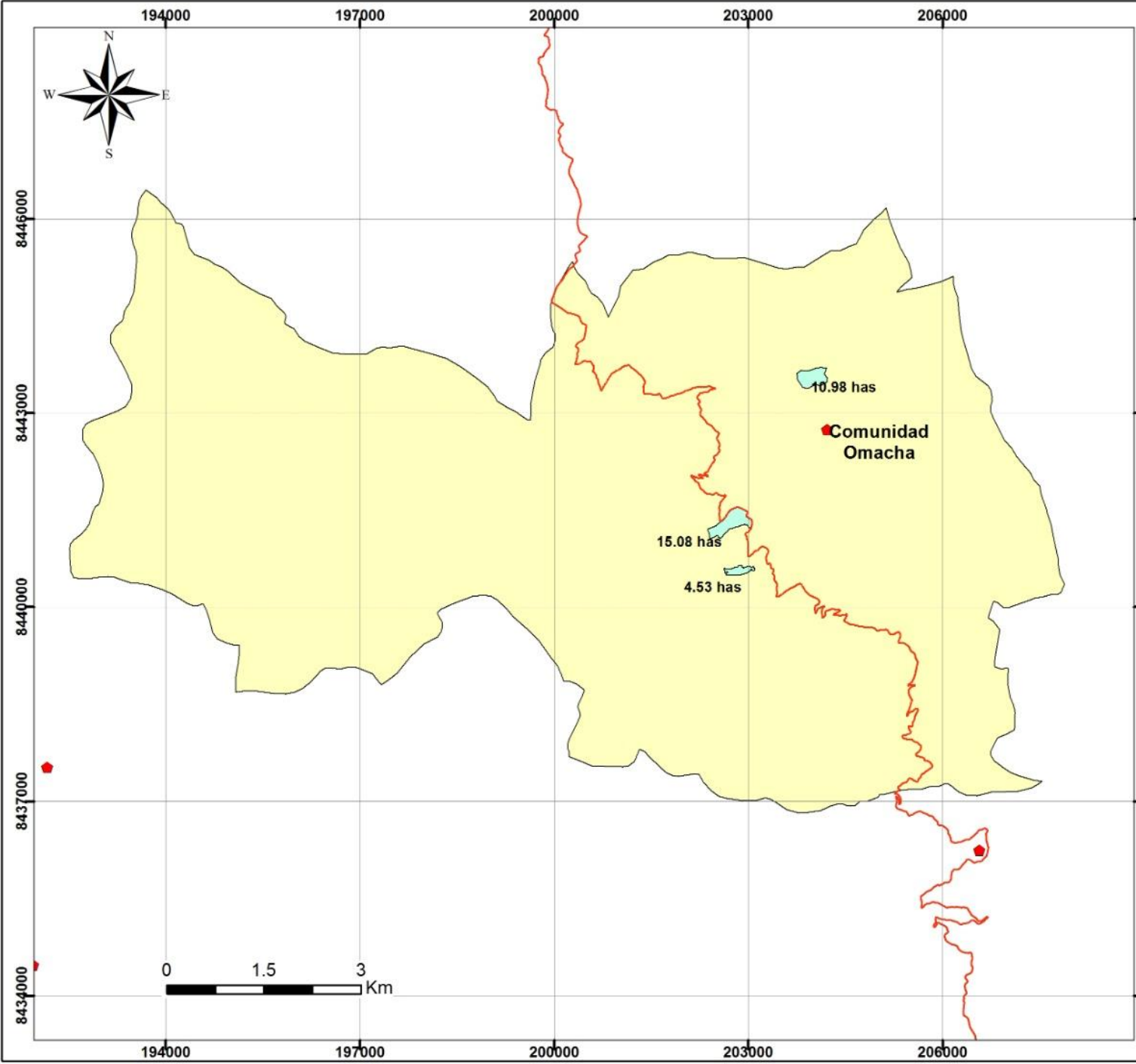
Plantation 2023 per  
80.67 hectares



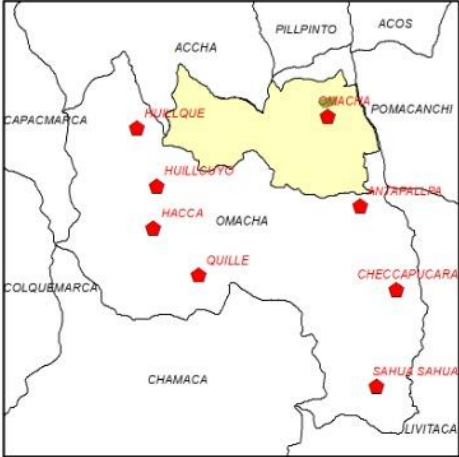


Map of the  
Community of  
Omacha

Plantation 2023 per  
17.41 hectares



MAPA DE UBICACION



LEYENDA

Red Vial Distrital

COMUNIDAD

- Omacha
- OMACHA



MAPA : "AREA DESIGNADA PARA PLANTACION POR LA  
COMUNIDAD "  
TABLA DE DATOS

UBICACIÓN		Área designada total
Departamento:	Cusco	17.41 Has
Provincia:	Paruro	
Distrito:	Omacha	
Comunidad:	Omacha	
Fuente:		* IGN: Instituto Geográfico Nacional * Delimitación de área propia
Fecha		: 01 de noviembre, 2023

## Now Nurseries 2024

We began the preparation of the new nursery beds, seeds, mycorrhizae, agricultural land, machinery and many communal tasks. In the 2023 production campaign we had many lessons learned. And our goal is to continually improve. For this reason we have established an alliance with our friends from Maderas Prosperidad, they work in Cajamarca and Chile and have valuable years of experience that they are now transmitting to our team.



All work begins  
with a  
communal  
meeting, with  
clear and  
defined tasks.





Preparation of beds for seeds





Marker per square  
meter (m<sup>2</sup>) for seed  
placement






All marking and placement of seeds is manual work.





A photograph showing a nursery bed for seedlings. The bed is covered with a blue shade cloth, which is partially rolled back on the left side. The soil is dark and moist, with rows of young green plants growing in it. The plants are small and have thin stems with green leaves. The background shows more of the nursery bed and some trees in the distance.

Our seeds are already seedlings that we will take great care of until they are strong to be taken to final field.



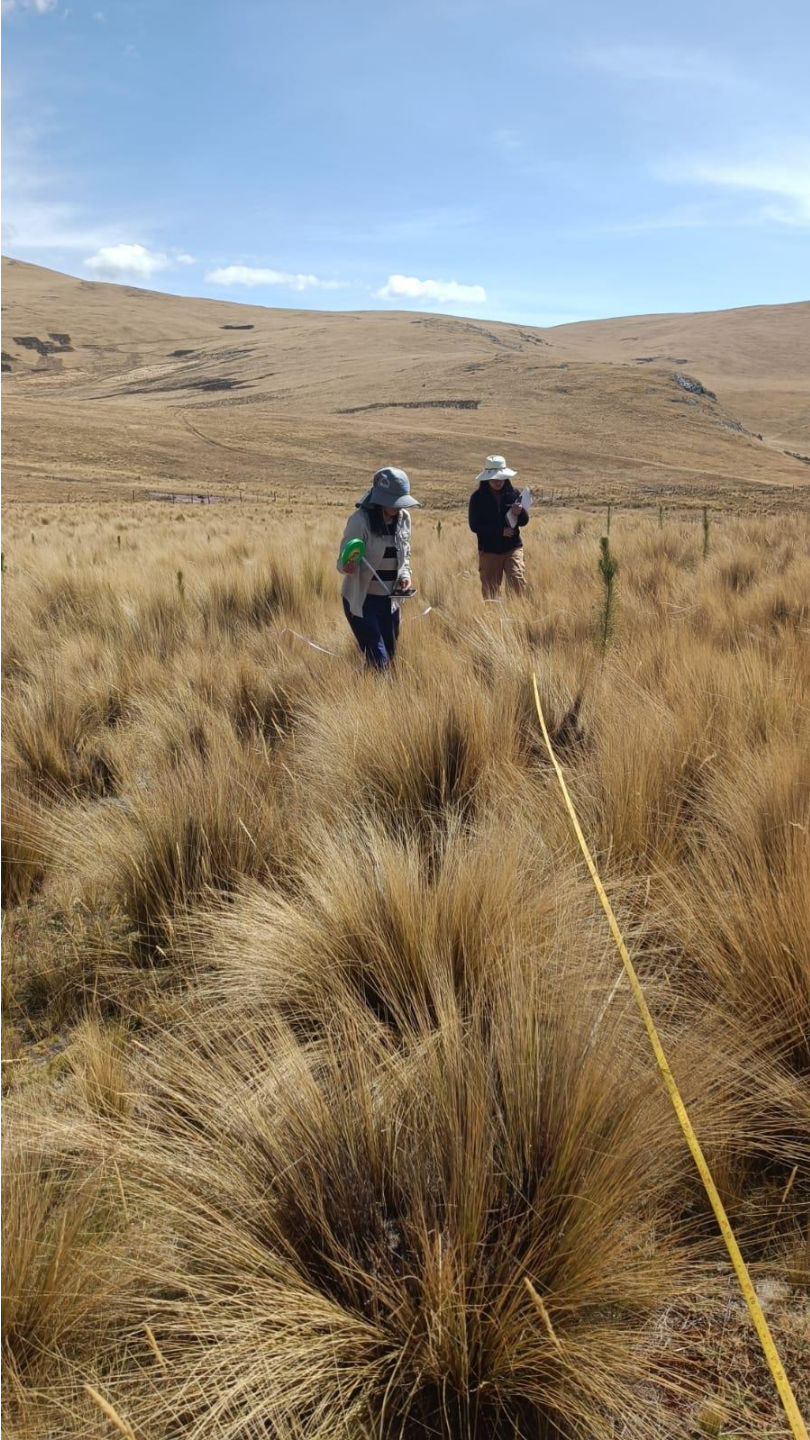
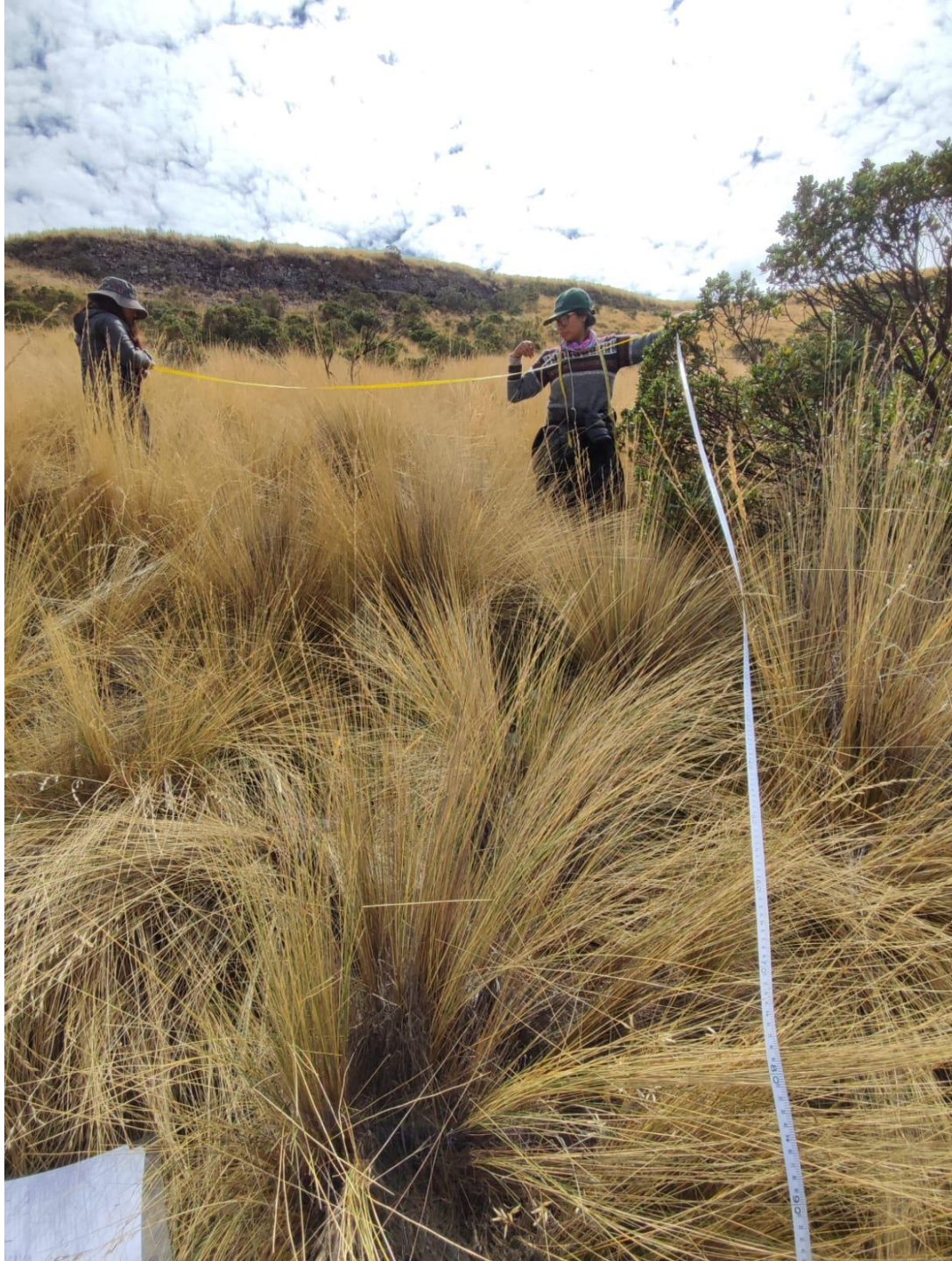
Now we are taking care of our little plants every day until December 2024 when they will be going out into the field.

A key word for our project has been “**Research**”.

All these months we have been working on the design and execution of the necessary studies to comply with the requirements of the international Plan Vivo standard. We are developing studies for the Protection of archaeological areas and the Inca trails, socioeconomic study, biodiversity study and baseline of plantation areas.



Baseline Study  
Production Areas





Baseline Study  
Production Areas







Baseline Study  
Production Areas





Socioeconomic baseline study





Socioeconomic baseline  
study





We express our gratitude to you since with your contribution we find ourselves in a situation that allows us to continue serving peasant families.

We hope to continue counting on your generosity and continue planting prosperity!

Help us with your donation, talk to your loved ones about our project, let's Sow Prosperity!

BLESSINGS -

PACHAMAMA RAYMI TEAM





