

PALA-KITO

A multifunctional structure for children and teens in Caldarola



KITO ONLUS

www.kitoonlus.org

info@kitoonlus.org

Kito Onlus presentation

- When emergencies like earthquakes, conflicts, famines, etc., happen, the international cooperation has to provide fast and efficient assistance.
- Above all, the attention has to be turned to the weakest groups of the affected population: in particular, children must be the direct and indirect beneficiaries of interventions to safeguard and protect their psycho-physical abilities.
- Kito Onlus is a no-profit organization, founded in 2012, whose main mission is to promote education and first aid in regions devastated by natural or human-inflicted disasters.



Kito Onlus Padua(Italy), Tel/fax +39 0498757382, www.kitoonlus.org, info@kitoonlus.org

Our projects



ph. Anna Orlando



Kito Onlus Padua(Italy) Tel/fax +39 0498757382 www.kitoonlus.org info@kitoonlus.org

Kito HUT in San Fernando la Union, Philippines.



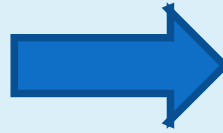
Kito Onlus Padua(Italy) Tel/fax +39 0498757382 www.kitoonlus.org info@kitoonlus.org

Kito Health Center in San Francisco,
Camotes Islands, Philippines.



Kito Onlus Padua(Italy) Tel/fax +39 0498757382 www.kitoonlus.org info@kitoonlus.org

Banilad elementary school, Mindoro island, Philippines.



Kito Onlus Padua(Italy) Tel/fax +39 0498757382 www.kitoonlus.org info@kitoonlus.org

Pala-kito: project location

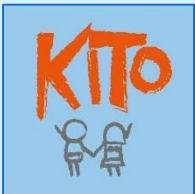
Municipality of Caldarola (MC), Marche, Italy.



Kito Onlus Padua(Italy), Tel/fax +39 0498757382, www.kitoonlus.org, info@kitoonlus.org

The issue

- The municipality of Caldarola (MC), in Italy, counts 1,806 inhabitants and it is located in a high seismic area. In 2016 it was **hit by an earthquake that severely damaged the whole town and destroyed the city center and many houses.**
- The situation today is still critical and the community life is suffering. **In particular Caldarola lacks of a structure where the community can enjoy staying together for moments such as events, conferences, courses and cultural activities.**



Caldarola after the earthquake of 2016



Kito Onlus Padua(Italy), Tel/fax +39 0498757382, www.kitoonlus.org, info@kitoonlus.org



City Hall: it used to host the activities of the associations and the events of the community.
Now the building is condemned.

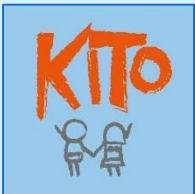
Other condemned buildings.



Kito Onlus Padua(Italy), Tel/fax +39 0498757382, www.kitoonlus.org, info@kitoonlus.org

Our solution: Pala-kito

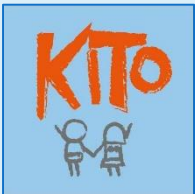
- The building of a **multifunctional structure** in Caldarola could **support and promote the rebirth of community life**, by providing the people of a safe area where to meet and enjoy activities and events together.
- Young ones especially will have the chance to regain trust and hope in their territory. **The feeling of belonging will enhance the possibility that young people decide to stay and invest in Caldarola, making it flourish again.**



Kito Onlus Padua(Italy), Tel/fax +39 0498757382, www.kitoonlus.org, info@kitoonlus.org

Why is it important?

- In post emergencies moments **the community needs to remain strong and united**, in order to accelerate the recovery. The feeling of belonging helps to regain trust in the territory and to feel safe again.
- **Young people especially may suffer more for such situations.** The impossibility to live their normal life could lead to marginalization and precariousness.



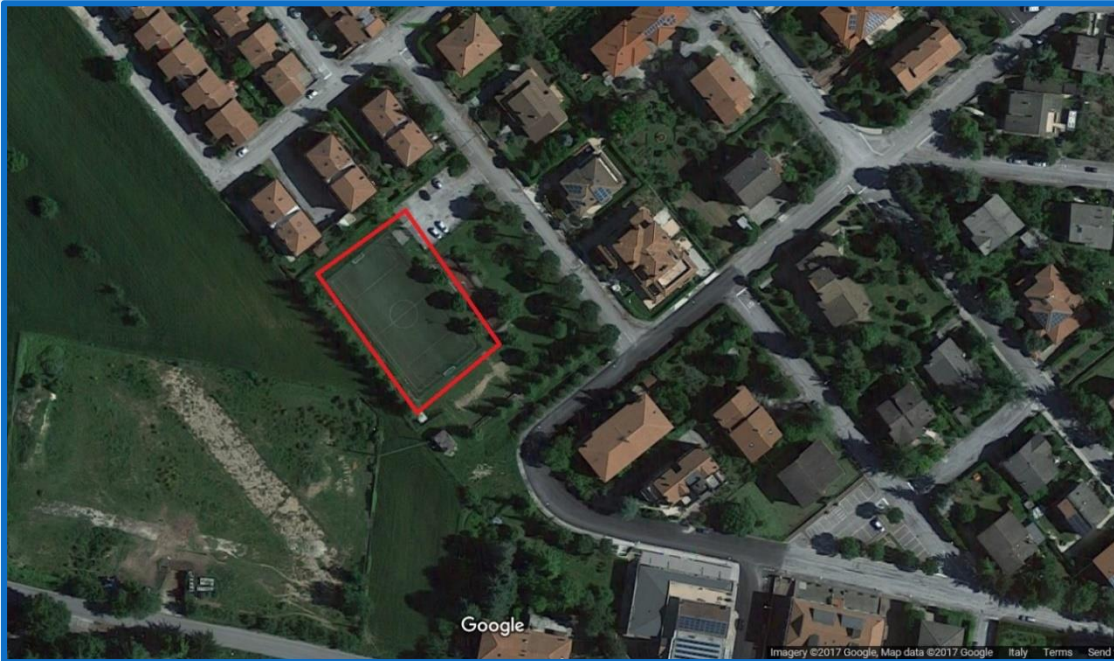
Kito Onlus Padua(Italy), Tel/fax +39 0498757382, www.kitoonlus.org, info@kitoonlus.org

Pala-kito main steps

- **1: design of the construction of a 1,400 sq.m. multifunctional structure in lamellar beams**, following the community's needs and criteria of environmental sustainability, a unity meant to be operative in the long term, even after the historical center of the municipality is rebuilt.
- **2: the construction of the structure is going to take place in a housing area** that is external to the first nucleus of houses and near to a place that is already set up for kids to play.
- **3: promotion of activities and workshops** with the involvement of local associations especially dealing with adolescents, with the aim of making young people an active part of the reconstruction project and an element of continuity in the life of Caldarola.

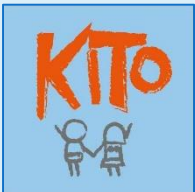


Where



This is **the chosen spot** for **Pala-Kito** location.

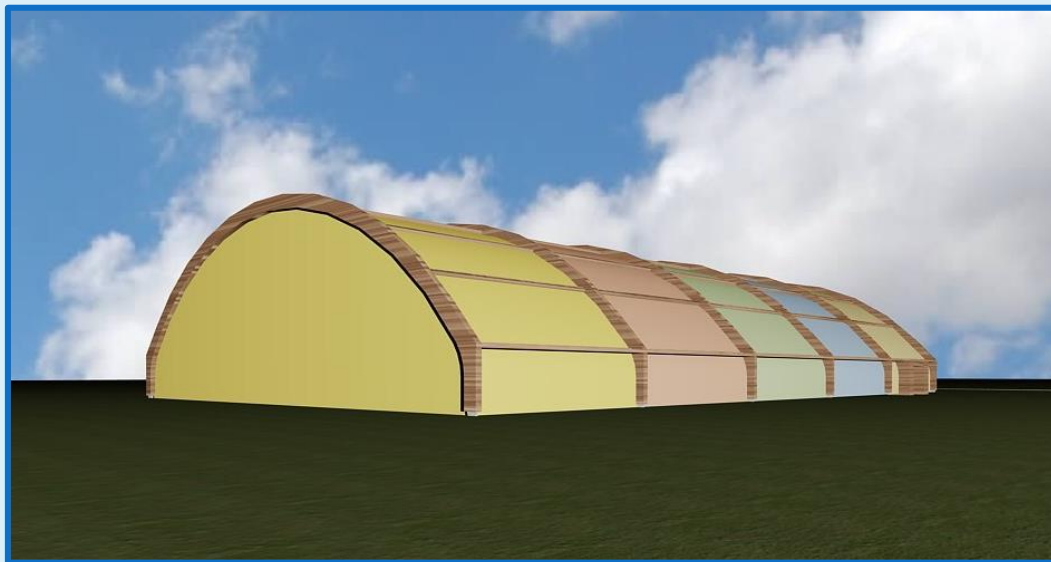
The structure will be close to the city center and near a children's park.



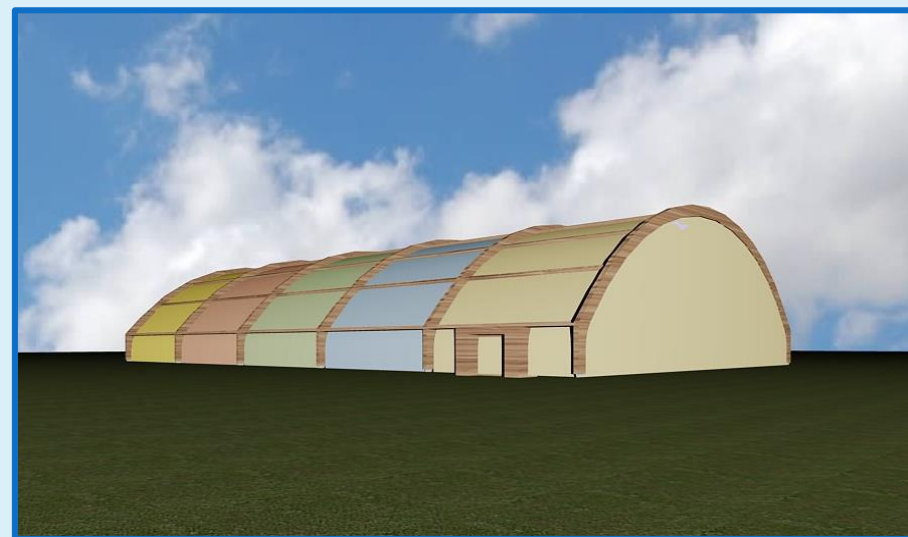
Kito Onlus Padua(Italy) Tel/fax +39 0498757382 www.kitoonlus.org info@kitoonlus.org

Project budget

PALA-KITO Construction		
Item	EUR	USD
1. Human Resources		
Administrative personnel	€ 6,000.00	\$7,200.00
Subtotal 1	€ 6,000.00	\$7,200.00
2. Travel expenses		
Transportation costs	€ 1,000.00	\$1,200.00
Accommodation and food	€ 500.00	\$600.00
Subtotal 2	€ 1,500.00	\$1,800.00
3. Materials		
Materials and equipment	€ 500.00	\$600.00
Subtotal 3	€ 500.00	\$600.00
4. Purchase/Construction/Reconstruction		
Building of the Pala-Kito structure	€ 100,000.00	\$120,000.00
Subtotal 4	€ 100,000.00	\$120,000.00
5. Formation		
Training and learning materials	€ 2,500.00	\$3,000.00
Subtotal 5	€ 2,500.00	\$3,000.00
TOTAL COST OF THE PROJECT	€ 110,500.00	\$132,600.00



How it will look like!



Kito Onlus Padua(Italy) Tel/fax +39 0498757382 www.kitoonlus.org info@kitoonlus.org

Please support our cause!



Kito Onlus Padua(Italy) Tel/fax +39 0498757382 www.kitoonlus.org info@kitoonlus.org