



THE
IREDE
FOUNDATION

CORPORATE PROFILE



www.theiredefoundation.org

Extending limbs, Raising champions

Profile

Who we are

Irede at a glance

Overview

Our Vision

Our process

Meet our Board Members

Organizational Structure

Impact

Beneficiary Reach

Some of our Irede Champions

Funding Sources

Contact



Who We Are



The IREDE Foundation (TIF) is a not-for-profit organization focused on encouraging children living with limb loss (either acquired or congenital) to live a life of fulfillment.

IREDE AT A GLANCE



Our overall aim is to encourage and empower indigent children (between the ages of 0-18) living with congenital or acquired limb loss so they can confidently live self-sufficient and fulfilled lives without limits.



The IREDE Foundation advocates for Child Amputees and children with limb disorder, working closely with professionals and the community to ensure they live a self-sufficient life by educating the society and empowering indigent children with prostheses and orthotic devices.

Overview

In Nigeria

- ☐ About 19 Million* people are living with disabilities
- ☐ Over 80% of children amputated are as a result of trauma (accidents, infections, mismanaged fracture and the likes).
- ☐ Most of these children are beggars on the streets hence they may not have the opportunity to access education, employment, marriage or even live a self-sufficient life
- ☐ Children living with Disabilities: Two primary issues
 - a very small percentage receive the inclusive education that they need
 - many families view children with disabilities as liabilities, leading to abuse or neglect

*Sources : globalrights.org

Vision

To see every child amputee become a champion; living without the limitations of missing limbs.

Mission

To provide encouragement and empowerment to children living with congenital and acquired limb loss so they can confidently live a self-sufficient and fulfilled life; free of limitations and societal stigmatization.

Core Values

- ☐ Transparency
- ☐ Respect
- ☐ Integrity
- ☐ Passion



...extending limbs, raising champions

Our Process

We...

- ☐ Educate
- ☐ Encourage
- ☐ Empower



EDUCATE

We are focused on educating care-givers and the society on congenital and acquired limb loss; and how to relate and care for children with this kind of loss. This is delivered via our communication strategy which is broad; from Individual or Interpersonal Communication and Counselling to use of multimedia (TV, newsprint, social media, videos) and mass communication, targeting various levels.

ENCOURAGE

We understand the challenges these children and their families face daily; and desire to be there for them when they need encouragement and support. Thus via the establishment of Support Groups, we have a support system they can count on always.

EMPOWER

We are focused on empowering the African child living with limb loss to live his or her life to the fullest; having equal access to life's opportunities like every other African child

BOARD OF TRUSTEES

Kunle Akinkugbe

Chairman



Kunle Akinkugbe is best described as an entrepreneur and social investor, committing time and other valuable resources to making a difference that is sustainable in and around his local community

Azubuike Chigbu

Secretary



Azubuike Chigbu is the Executive Chairman of Crystal Tushe Ltd, a telecom ancillary service Company and the Head of West Africa Business Mobile Decisioning Holdings Ltd (BVI

Fela Durotoye

Board Member



Fela is the Founder of a world class "leadership factory" called the GEMSTONE LEADERSHIP INSTITUTE. The GLI is a center for leadership excellence and effective governance; aimed to raise a critical mass of value-based leaders for the corporate and governance spheres of Nigeria

Ugo Chime

Board Member



Ugochukwu Obiora Chime is the Chairman/Chief Executive Officer, Copen Group of Companies and the chairman of Bethel Microfinance Bank Limited

Angela Ajala

Board Member



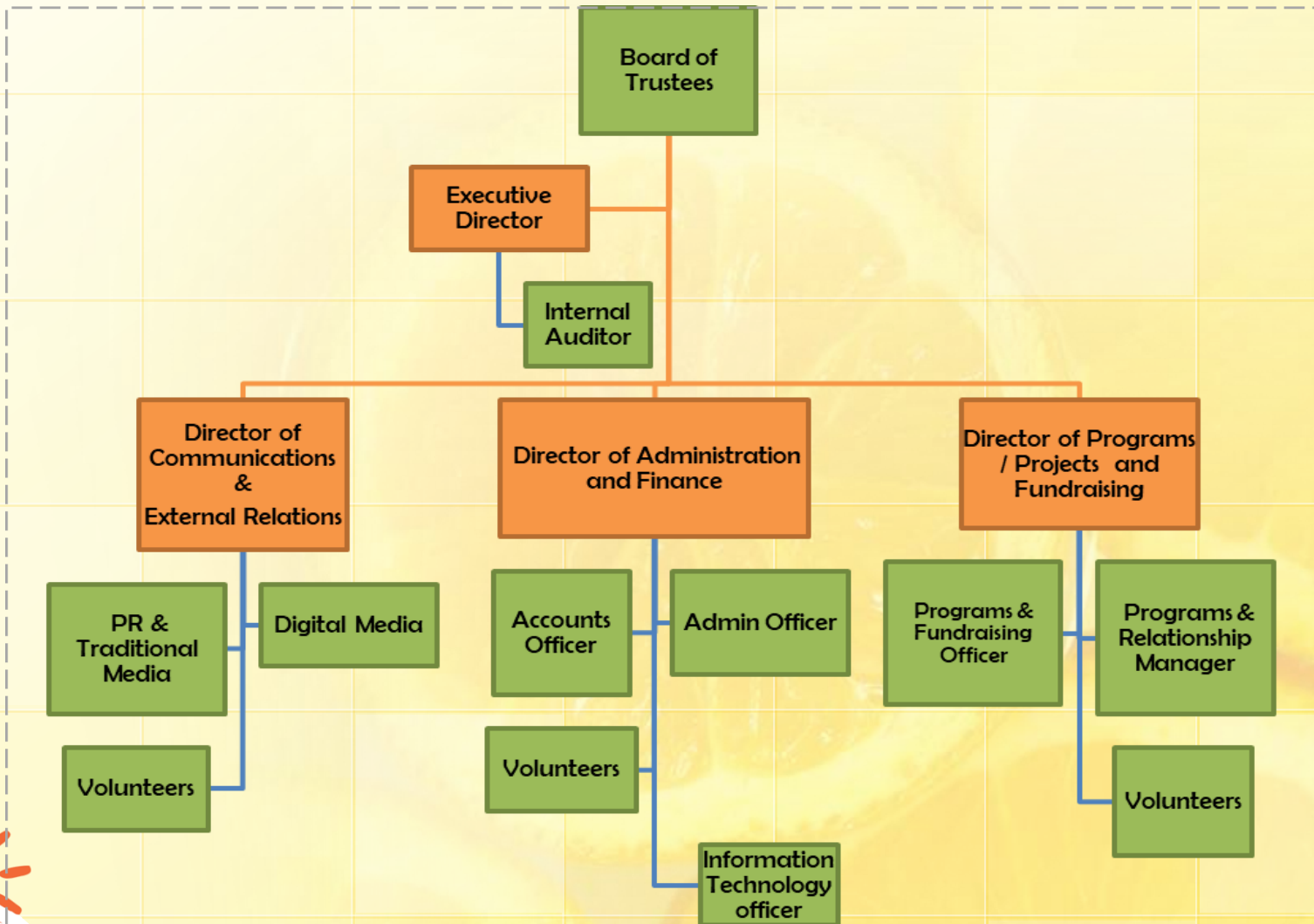
Angela Ajala currently the National President, Business and Professional Women Nigeria, is a senior consultant with the School resources center and also the Educational Consultant for implementing new curricular

Crystal Chigbu

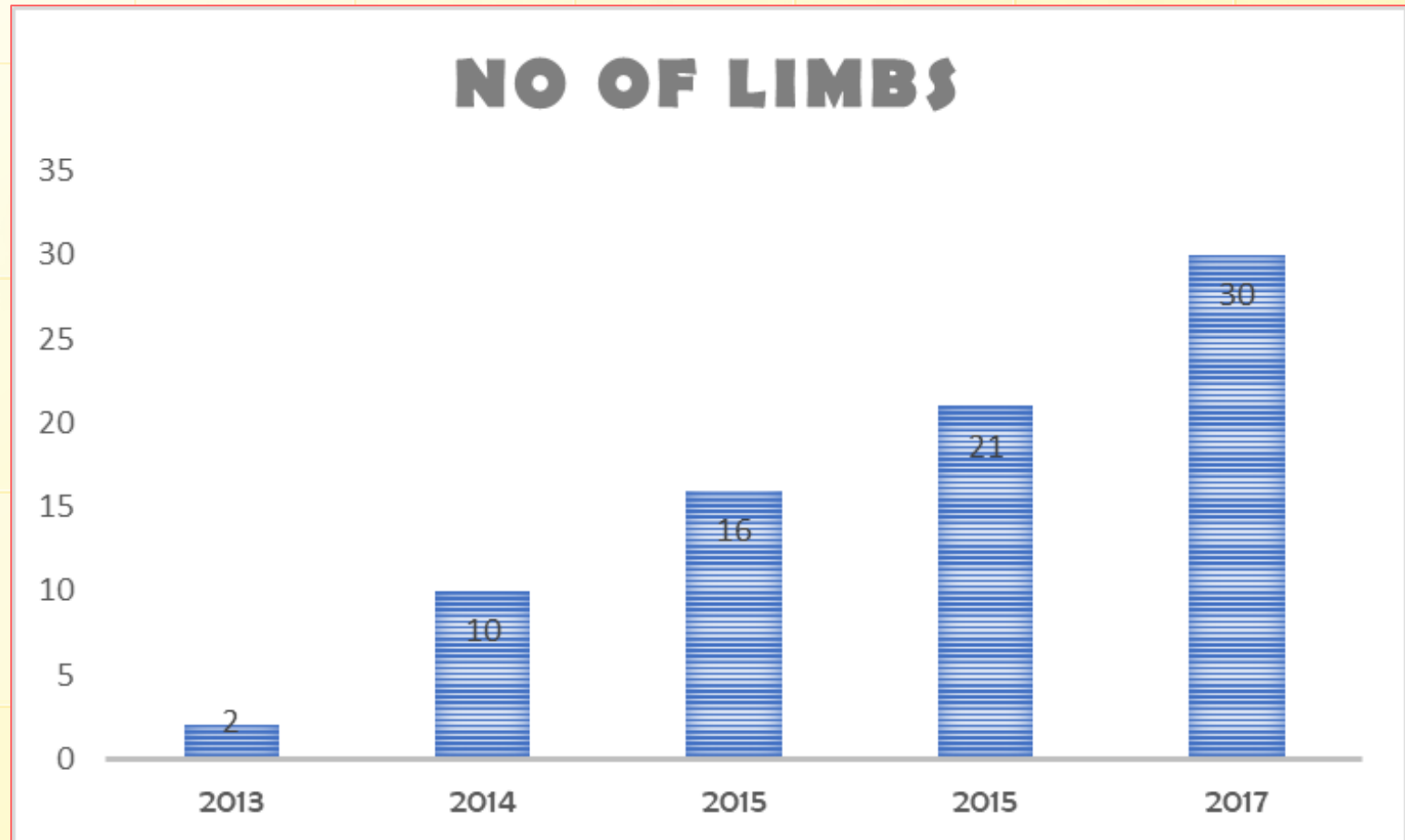


Crystal Chigbu is the Founder of The IREDE Foundation. She graduated with a Bachelor of Science Degree in Biochemistry from the University of Lagos, Nigeria. Crystal is an author and the current Executive Director of The IREDE Foundation

ORGANIZATION STRUCTURE



IMPACT



BENEFICIARY REACH



***Reach show; number of states in Nigeria where we have beneficiaries**

...extending limbs, raising champions

SOME IREDE CHAMPION



FUNDING SOURCES

- Individuals - 23%
- Sahara Charitable Foundation – 2%
- Stanbic IBTC Bank – 17%
- Feet of Grace Foundation – 26%
- Zenith Bank -11%
- Lagos State Government – 4%
- Out on a Limb* -17%

1. Please note 80% of funds go into Projects and balance 20% to operations .
2. Organizations also support The IREDE Foundation with a sustainability fee of 20% .



***Out on a limb is an Irede foundation initiative**

...extending limbs, raising champions

Thank you for taking time to review our profile . We hope that together we
will be extending limbs and raising champions.

For more enquiries,
please call Crystal Chigbu on
+234 (0) 817 329 8130
Or email chigbu.c@theiredefoundation.org

OR
The IREDE Foundation
M:07087109596 | L:01-3422457
Or email info @theiredefoundation.org

Visit the
www.theiredefoundation.org

 Theiredefoundation
 @theirede



...extending limbs, raising champions



THE
IREDE
FOUNDATION

Thank You!

www.theiredefoundation.org

