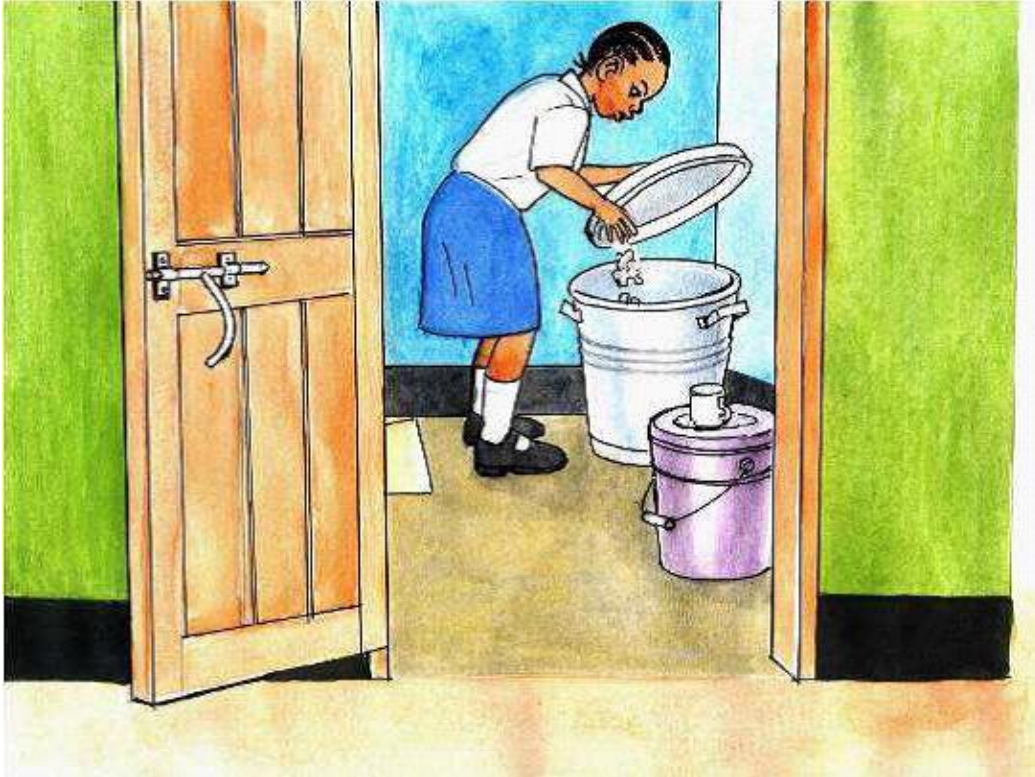




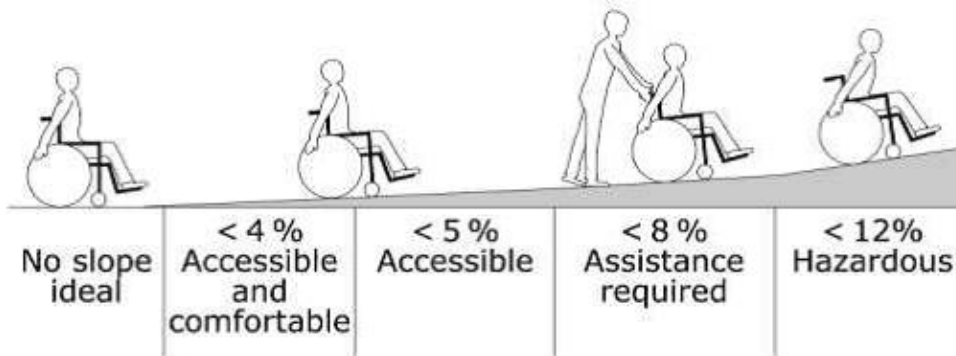
Ventilated improved pit latrine with hand-washing



Hand-washing from a SIM tank rainwater harvesting tank next to the latrine



Girls hygiene unit / room



Acceptable slopes for wheelchair users



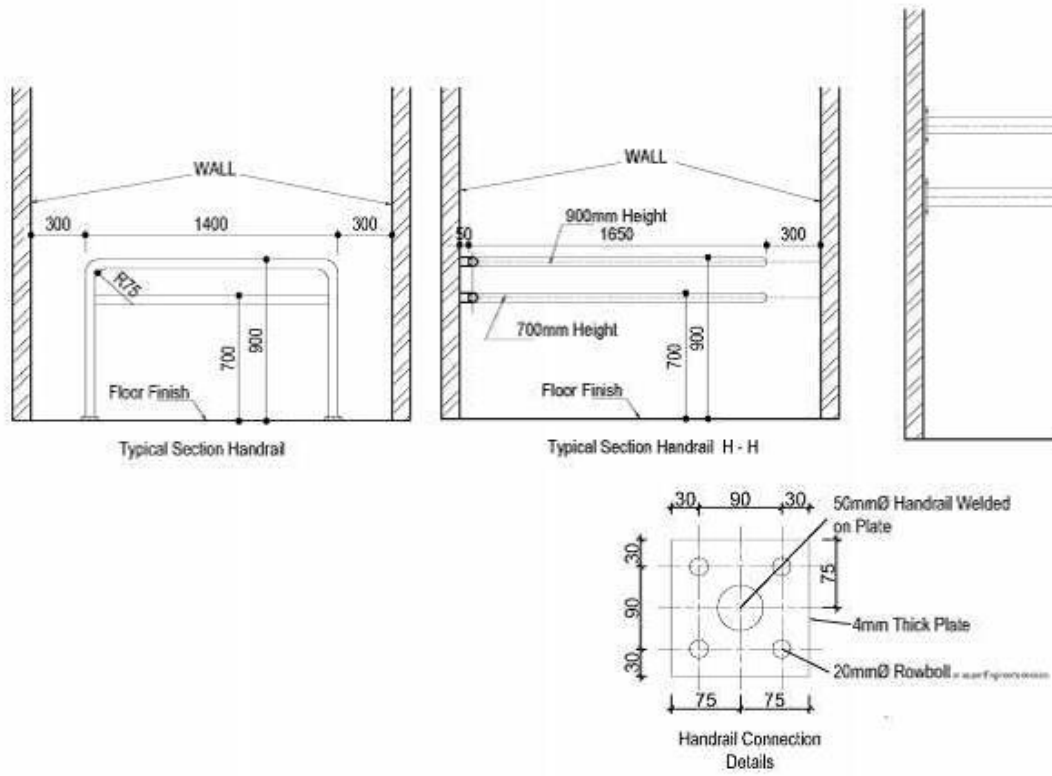
Slope made of compacted soil / bricks / stones

Low cost option. Compacted Soil Bricks/stones



Girl-friendly Latrines for school girls | Share Child Opportunity Eastern and Northern Uganda

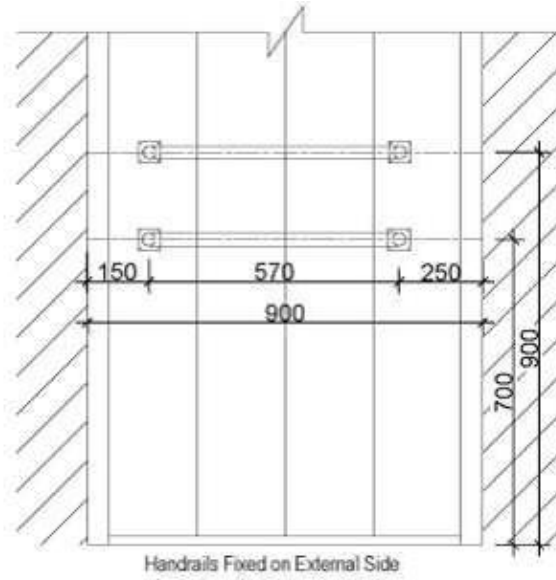
Concrete ramp with curbs

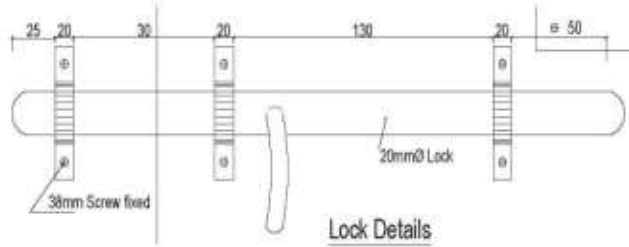
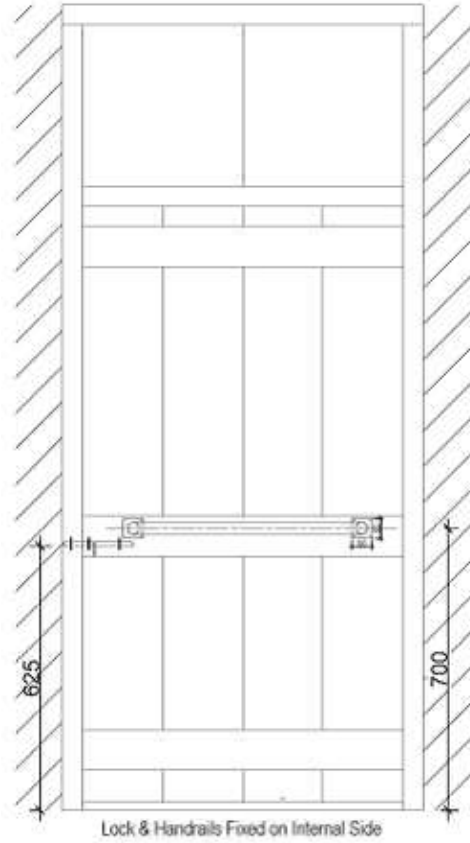


Technical drawing of handrails for improving accessibility inside latrines

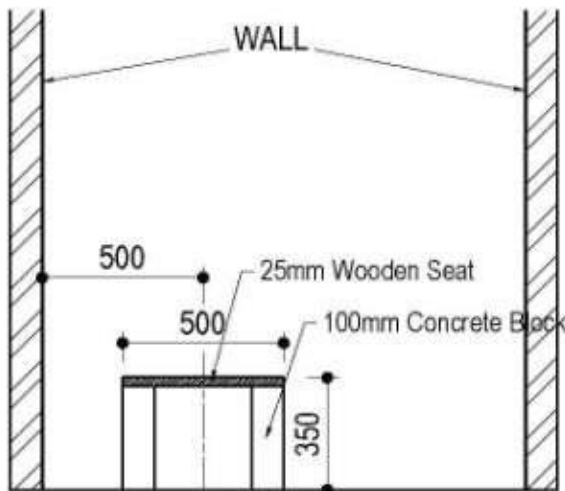
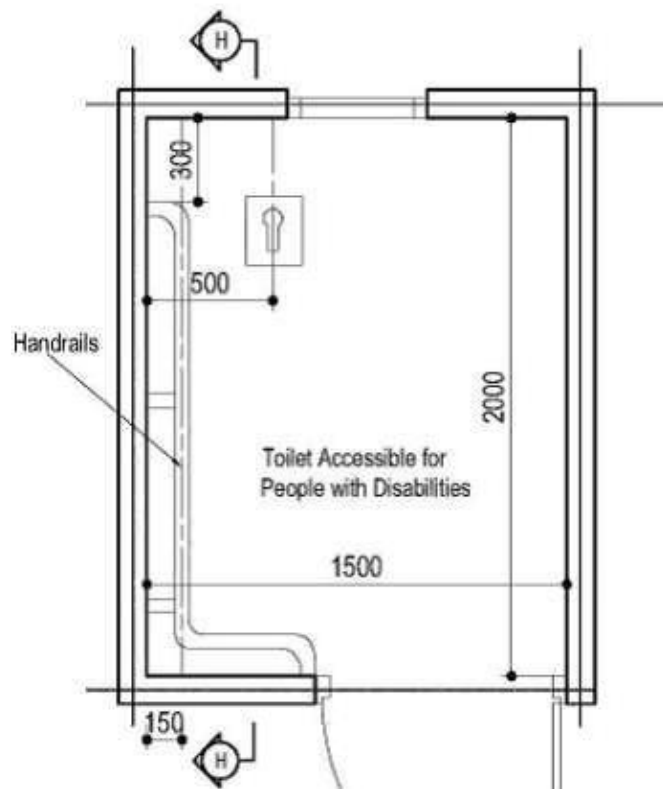


Door handrail for ease of opening





Easy grip door handle and lock



Concrete Block with Wooden Seat.

Layout of the minimum dimensions for an accessible latrine unit