



NAMASTE COMMUNITY FOUNDATION - NEPAL

03 Scholarship Program

Namaste Community Foundation, Nepal
PostBox:173, Jarewar, Lakeside, Pokhara-6



Our Programs – Overview

01	02	03	04	05	06	07	08
Children Home Program	Re-Integration Program	Scholarship Program	Hearing Clinic Program	Woman empowerment Program	Self-Sustainability Program	Short-term Support Program <ul style="list-style-type: none">• Supporting varies community projects• Street Children Protection and Rehabilitation Program• Earthquake Program	Fundraising Program <ul style="list-style-type: none">• Professional Support• Children Sponsor's• Support from Individuals and Partner Charities• Brick Campaign• Championship Trophy• Walk for Kids• Agriculture business

Our Programs – 03 Scholarship Program



BACKGROUND

Supporting poor children for continued education

- Developed in August 2004
- During visiting villages and rural areas, many families were found to be without financial resources and even sometimes without awareness to send their children to school
- NCF decided to provide support to selected children to attend local government schools depending on the financial situation of the by giving scholarships (partial support to cover specific costs see examples below) on a regular basis or a full bursary covering all costs
 - School fees: yearly admission, monthly tuition fees, exam fees and other related expenditure
 - Stationery and books: copy, pencil, eraser, calculator, zoometry box, school and practice books
 - School uniform: shirt, pant / skirt, shoes, socks, etc.
 - School bags, pocket money, bus fare, etc.
 - Extra clothes during winter or festivals
- NCF monitors the attendance & performance to ensure that the supported children are on the right path

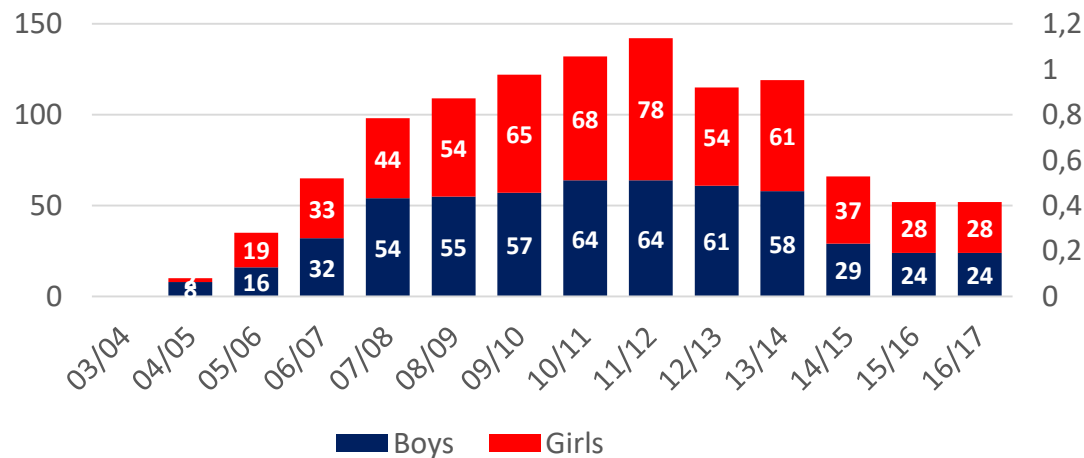
Our Programs – 03 Scholarship Program



SITUATION & FACTS

- Total students supported till date: 175
- Current students receiving continuous support: 52

Children under Support



IMPACTS

- After completion of SLC (School Leaving Certificate) after class 10
- Improvement of parents financial condition
- Any situation arises where organization has difficulties to continue support:
Like: marriage & couldn't continue school, migrated too far, failed more then two years in same class, etc.
- Re-integration progress started in the year 2012 as on the beginning only little kids has been added to the program
- No new children since 2014

Our Programs – 03 Scholarship Program



HOW YOU CAN SUPPORT

- Sponsor an individual child US\$ 200
- Sponsor a group of five children US\$ 1,000
- Sponsor dedicated items (as per list) per child:
 - Stationeries (eg pencil, copies, note books) US\$ 10
 - Others (eg cloths, pocket money, bus fares) US\$ 20
 - School uniform, books, school bag US\$ 40
 - school admission fee and tuition fee US\$ 130
- Sponsor any fund amount

FUTURE FOCUS OF PROGRAM

- 10 children in one village depending upon the need
- Supervised by the local teachers, mothers group or local youth club.
- Sponsor can be a single person, a family, an organisation
- Full educational support until 12th grade
- Quarterly school/children visit by NCF Nepal
- Quarterly children progress reports from schools
- Bi-annual updates to the sponsors
- Scholarship selection by NCF Nepal with close coordination with local stakeholders



Our Programs – 03 Scholarship Program



PICTURES



Children out of Program



Group picture 2016 in front of NCF buliding



Supervision & Distribution



Distribution



Distribution



School stationaries



Distribution