



SAKCHAM Rural Nepal
Leadership Vocational Center | Update No. 12

WEEK
31

Jamie Elderkin
Humanitarian Designer

Journeyman International, Inc.
1330 Monterey St
San Luis Obispo, CA 93401

jamie@journeymaninternational.org
www.journeymaninternational.org
425.922.6868

From the Designer:

The year is beginning to wrap up and I can feel it! I postponed this update from last Friday to today because I was busy preparing for a mock version of our FINAL show! We had this mock show today, in which my studio set up displays as we are hoping to have in our final version on May 23rd. Although many drawings and models were simply placeholders for now, I now have a better idea of my final deliverables and what it will take for me to complete everything. I have attached a calendar of my personal goals of deadlines at the end of this update, but that is mostly for myself rather than you.

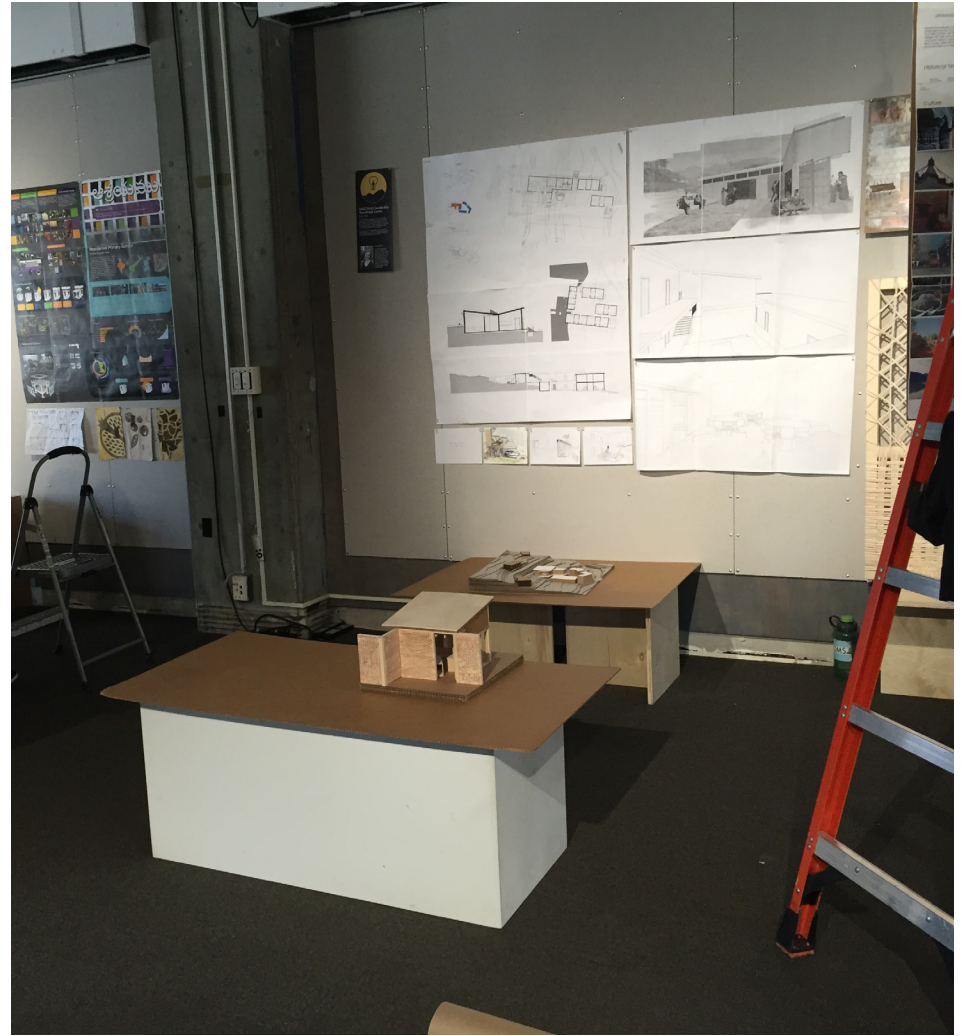
After the detail show, in between designing my actual display layout, I have been spending a lot of time re-working the floor plan. I am once again struggling with ramps and accessibility, and have decided to connect the upper level of at least one of the dorms to the training center to allow two rooms to be handicap/wheelchair accessible. That might be the extent to which I can accommodate such disabilities. The ramp itself is still a work in progress and my next task at hand for tomorrow. I am also working hard to integrate systems such as the biogas and rainwater catchment system closely into the site design as being on display rather than tucked to the edge of the property or hidden. I have sized the water cistern and will be further researching biogas in particular over the next few days to help with these goals. Another big change you will see that I have made is I have drastically simplified the dorms. I am now happy with the shapes of the masses, it is just about placing and connecting them in all the right spots.

Before long, I will be purely in "production mode" as I will be building a few models, perfecting drawings, and constructing a couple pieces for the final display. This means that hopefully, by next week, I should be finished making major changes and only details will be decided and adjusted moving forward. That being said, now is the time if you have input about any big changes!

Let me know what you think!

Best,

Jamie



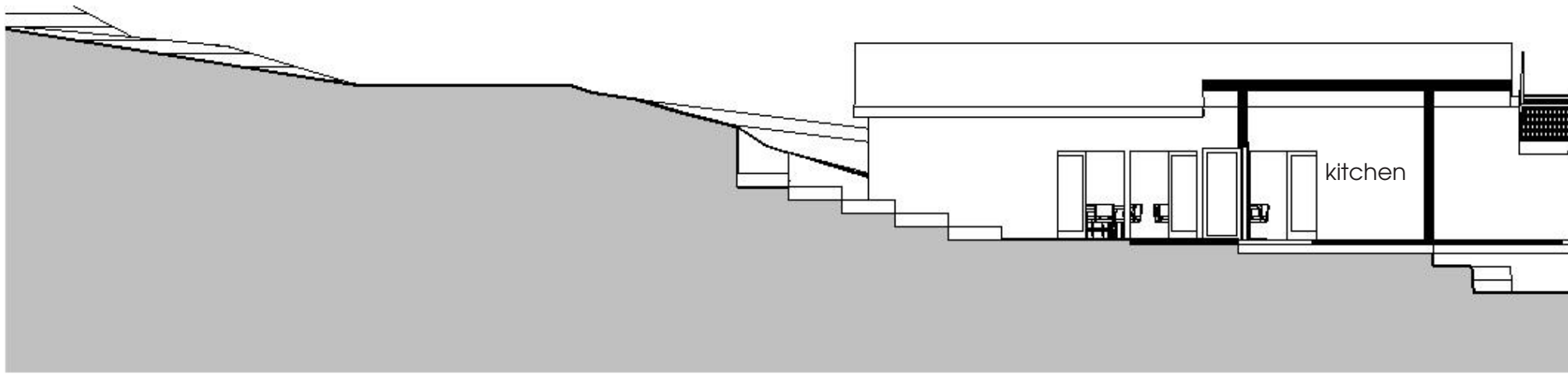


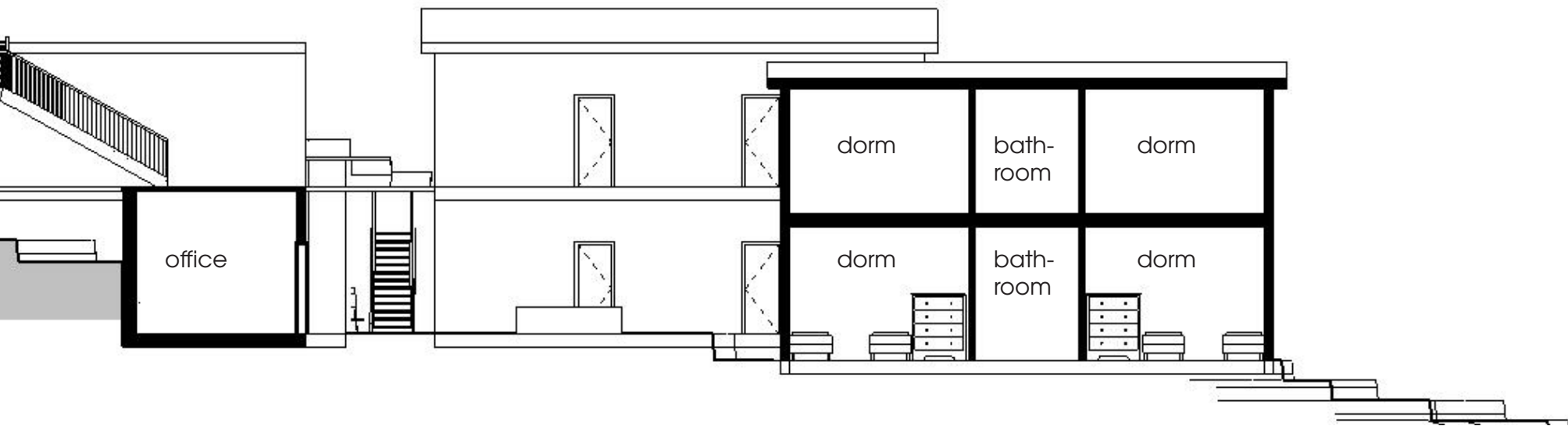
The detail show focused on a small piece of the project. I ended up taking on a larger chunk than a traditional detail, examining the entire kitchen. With scale models at $1/4"=1'$ and $1/2"=1'$ I studied the way the kitchen opens into the adjacent areas, deciding to open primarily out toward the amphitheater and southern deck, while closing off the eastern side for additional structural support and better placement of counters and appliances compared to what would have been an island. I also played with some weaving patterns, including this sample of a full scale test of a dense and open weave of basket weaving reeds. I hope this gives an understanding of the overall feeling of the kitchen based on the materiality and layout.





REVISED LOWER PLAN





SECTION OF SITE (VERY ROUGH PLACEHOLDER FOR FINAL SECTION)

Sun	Mon	Tue	Wed	Thu	Fri	Sat
17	18	19	20	21	22	23
		<ul style="list-style-type: none"> Bi-Weekly Update Mock Studio Show Model sizes determined, m... 	<ul style="list-style-type: none"> Edits to Revit Model per re... 	<ul style="list-style-type: none"> Revised Perspective, 1 Ne... Feedback from Sandy on d... • Revit tutorial lesson 2:15 PM 		
24	25	26	27	28	29	30
<ul style="list-style-type: none"> Kitchen section model Draft of Integrated Section 2 watercolor vignettes 	<ul style="list-style-type: none"> Final massing/building plac... 	<ul style="list-style-type: none"> Site model cut files, includi... 		<ul style="list-style-type: none"> Cut files of 1/8 scale buildi... Video Revised? 		
May 1	2	3	4	5	6	7
			<ul style="list-style-type: none"> Cut files? and materials for... 		<ul style="list-style-type: none"> Bi-Weekly Update Full Understanding of Traini... 	
8	9	10	11	12	13	14
<ul style="list-style-type: none"> 1/8" Model Complete 		<ul style="list-style-type: none"> Plans Photoshopped 		<ul style="list-style-type: none"> All perspectives complete 		
15	16	17	18	19	20	21
<ul style="list-style-type: none"> SRN Feedback Mithun Mentor Feedback 	<ul style="list-style-type: none"> All watercolor vignettes 	<ul style="list-style-type: none"> 1/2" Model Complete Revised Integrated Section 	<ul style="list-style-type: none"> Site Section 	<ul style="list-style-type: none"> Model Stand(s) Constructed 		
22	23	24	25	26	27	28
<ul style="list-style-type: none"> Final Studio Show 					<ul style="list-style-type: none"> Chumash Show - Final Show for all 5th Years Bi-Weekly Update 	