



**JANUARY TO DECEMBER 2014**

# ANNUAL REPORT



UBUBELE

EDUCATIONAL & PSYCHOTHERAPY TRUST

# CONTENTS

Vision & Mission .....	3
Chairperson's Message .....	4
Executive Director's Report .....	5
Current Board and Staff .....	6
Organogram .....	7
Umdlezane Parent-Infant Programme .....	8,9,10
Early Childhood Development (ECD) Programme .....	12,13
Working with Groups Programme .....	14
Other Training Courses .....	15
Advocacy .....	15
Statistics on Service Delivery .....	16,17,18
Thank you to our donors .....	19,20
Abbreviated Financial Statements .....	21,22,23

## UBUBELE VISION & MISSION & OBJECTIVES



**Ububele's vision for South Africa is that of a nurturing society with secure, physically and psychologically well-cared for children, who grow up to be emotionally healthy adults, competent parents and concerned citizens.**

**Ububele's mission is to have a positive impact on the mental health of disadvantaged South Africans through the development and dissemination of training programmes which focus on infancy, early childhood and experiential group work.**

**Ububele's objectives are to:**

- Develop models of community-based psychosocial care and support for children
- Develop, run and disseminate training programmes
- Conduct research
- Advocate for the right to child mental health care
- Provide psychological services to the residents of Alexandra



### Thank you for your support

Ububele is grateful to all friends and partners.  
If you would like to donate our account details are:

**Account Holder:**

The Ububele Educational & Psychotherapy Trust

**Name of Bank:**

First National Bank

**Branch number:**

261251

**Account number:**

6231682062

See our list of donors and financial statements on page 19.

Please send your name and address with proof of payment to [info@ububele.org](mailto:info@ububele.org) so we can issue you a Section 18A tax receipt. Thank you!





PROFESSOR  
CHABANI MANGANYI

**Ububele has survived and managed to continue to provide an outstanding service to the people of Alexandra for 14 years.**

## SOLID PRESENT AND BRIGHT FUTURE

Looking back on 2014, I am delighted to report that the governance of Ububele is in good hands and that the growing need for community-based psychosocial support has meant that the organisation has sourced additional funding to ensure its programmes are sustainable into the future.

There are many challenges facing the non-profit sector and as a result many organisations are closing. This is a crucial stage for Ububele. It has survived and managed to continue to provide an outstanding service to the people of Alexandra for 14 years. This shows tenacity and belief in the value of the work being done. We have to ensure that our programmes remain relevant, community-driven and effective in achieving their outcomes. It is only fair that organisations must show measurable results, although in the sphere of mental health this can be a challenge.

Ububele is fortunate to have a research partnership with the University of the Witwatersrand which enables us to carry out ethical research projects to see if our programmes are effective and how we can improve on them.

The organisation continues to grow its staff and volunteer complement, which is promising. Ububele has had the good fortune of having experienced members of the Board who have been involved for a number of years. I would like to take this opportunity to thank Tony Hamburger for his leadership role in the past year as Executive Director to keep the organisation on a stable footing with secure funding and strong management. He has been ably assisted by Katharine Frost, Deputy Executive Director, and the rest of the Ububele family.



TONY HAMBURGER

## STRENGTHENING AND GROWING

Sharing expertise and experience about effective programmes on infant and child mental health has been rewarding for all of us at Ububele. The past year has seen the strengthening of two of our core programmes: Working With Groups and Early Childhood Development, plus an expansion of our third pillar – the Umdlezane Parent-Infant Programme. We are proud to have an additional six home visitors making up a total of nine in the team providing support to expectant and new mothers and their babies in Alexandra. They are part of the Home Visiting Project, which was reported on at the World Association of Infant Mental Health (WAIMH) global congress in Scotland.

Our partnerships in Alexandra have strengthened with more of our services offered in government clinics and a new agreement with Alex Clinic to have a permanent presence at their premises in 2015 that will enable increased access to our services. Despite the many challenges facing the health sector and our communities, we are continuously reminded that effective programmes and interventions can make a huge difference in transforming lives that are often facing extremely stressful circumstances. For the past 14 years, Ububele has been developing and growing its programmes while always assessing how we can improve and reach more people in need.

To do this, we depend on the long-term generosity of our friends and partners, both locally and internationally, in covering the costs of the work we do. We are also grateful to our Board members, our staff and volunteers who keep the Ububele family going through their ongoing commitment and dedication.

**The past year has seen the strengthening of two of our core programmes: Working With Groups and Early Childhood Development, plus an expansion of our third pillar – the Umdlezane Parent-Infant Programme.**



## Board of Trustees

**Chairperson:** Professor Chabani Manganyi

Ms. Bongile Dhlomo-Mautloa

Mr. Tony Hamburger

Ms. Thabisile Levin

Ms. Matshidiso Maseko

Ms. Hannah Yilma

## Current Staff (2015)

**Executive Director:** Tony Hamburger

**Deputy Executive Director & Head Umdlelane**

**Parent-Infant Programme:**

Katharine Frost

**Office Manager & Working With Groups**

**Programme Head:**

Jake Matlhong

**Early Childhood Development Programme Head:**

Julia Green

**Mother-Infant Home Visiting Project Manager:**

Nicki Dawson

**Development Coordinator:**

Louise Oppenheim

**Advocacy Communication**

**& Research Coordinator:**

Martha Gordon

**Psychologists:** Oscarina Majokweni, Jade Richards

Shelley Nortje, Phethile Zitha

**Clinical Supervisor:** Mary-Anne Tandy

**Home Visitors:** Thandiwe Khumalo, Vivian

Mlambo, Zanele Vilakazi, Florence Ramoshaba,

Khosi Sithole, Mamikie Rumo, Pamela Maphalala,

Thenjiwe Nsibande, Zanele Mokolutlo

**Receptionist:** Palesa Tshitlo

**HR and Accounting:** Anne Devine,

Stuart Beacham

**Housekeeper:** Tholakele Dube

**Driver and caretaker:** Nicholas Maphosa

**Ububele Pre-School ECD Practitioners:**

Hazel Masike (Head Teacher), Evelyn Dubazana,

Gladys Langa

**ECD Junior Practitioner:** Masello Rapetswa

**ECD Practitioners' Assistants:** Lerato Moono,

Nonhlanhla Mbuli

**Preschool Cook:** Nobukhosi Dube

**Thank you to the following people**

**who were staff members during**

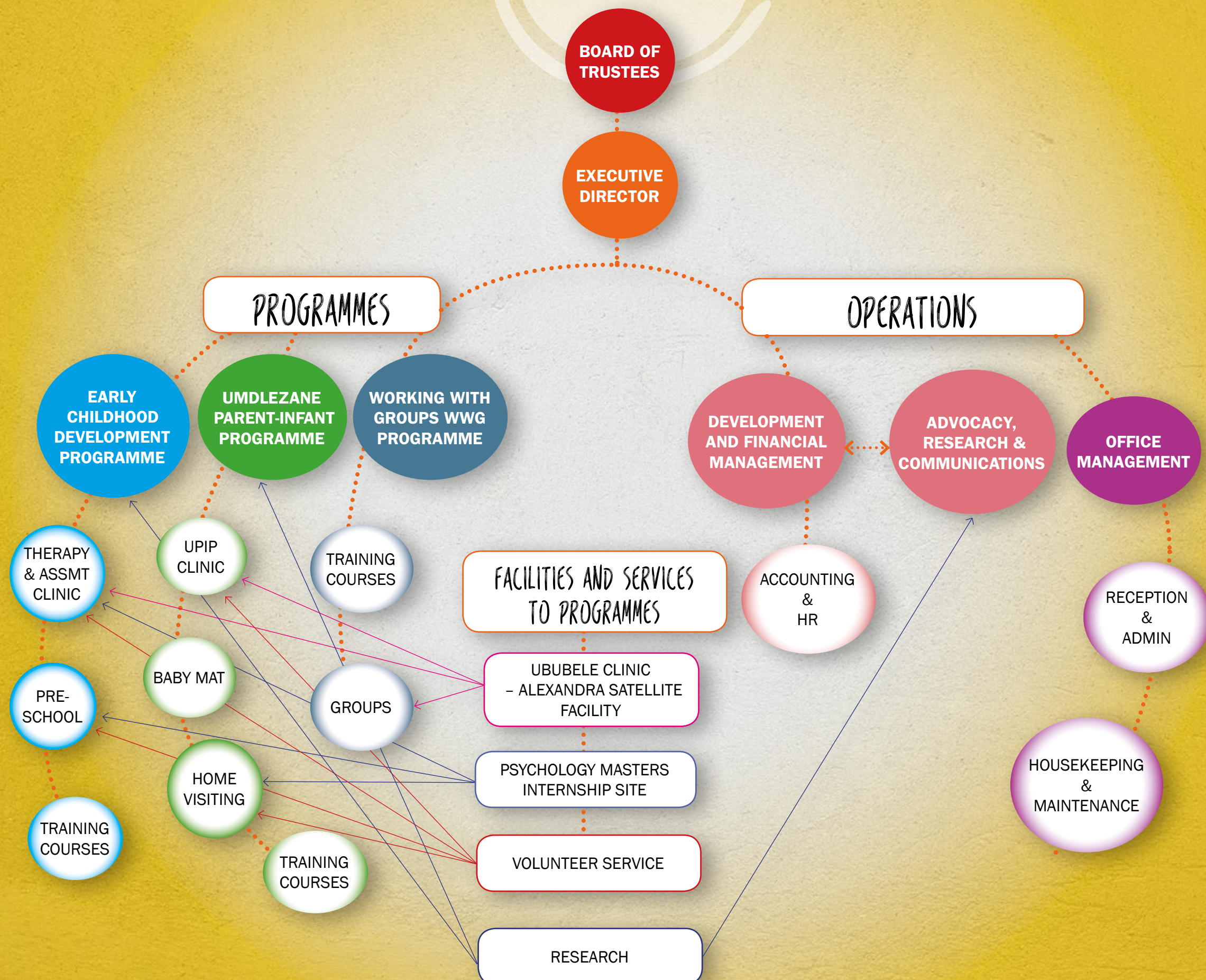
**the period under review:**

Melanie Esterhuizen,

Thembi Mashigo &

Lee-Anne Eastwood.

# UBUBELE ORGANOGRAM





# UMDLEZANE PARENT-INFANT PROGRAMME

## (UIP)

*The Umdlezane Parent-Infant Programme (UIP) focuses on the first 1000 days, from conception to 2 years of age. We run 3 direct interventions: Baby Mat, Home Visiting and Parent Infant Psychotherapy. Training courses are aimed at psychology professionals or community-based caregivers working with parents and their infants.*

### HOME VISITING PROJECT EXPANDED

Six new Home Visitors, Florence Ramoshaba, Thenjiwe Nsibande, Khosi Sithole, Mamikie Rumo, Zanele Mokulutlo and Pamela Maphalala, who are all mothers from Alexandra joined the team in August after extensive training, bringing the number of home visitors up to 9. The new team members have enabled us to support many more parents and babies each week. We now

visit four times before the birth and 10 times after. Some cases are referred for Parent Infant Psychotherapy at our offices. A total of 166 mother-infant dyads received home visits during 2014, and our randomised controlled trial progressed well. The increase in project staff allowed us to achieve our targets for 2014 without difficulty.



Back row: Nicki Dawson, Pamela Maphalala, Thandiwe Khumalo, Mamikie Rumo, Thenjiwe Nsibande, Khosi Sithole, Zanele Mokulutlo. Front row: Vivian Mlambo, Zanele Vilikazi, Florence Ramoshaba.

### UBUBELE BABY MAT PROJECT



The primary aim of the Baby Mat intervention is the provision of emotional support for mother and baby. It is a brief stand-alone intervention that also provides a port of entry for possible longer term support if needed. The project continued to provide services to 3 clinics within Alexandra during 2014: the Alexandra Health Centre (Alex Clinic) and the

Thoko Ngoma and East Bank clinics. A fourth mat was introduced at the Alex Clinic on Monday mornings when many mothers bring their infants for the 6-week check-up and immunization. The Baby Mat reached a total of 327 mother-infant dyads during 2014. 12 mothers were referred for home visits during the year and they received a total of 116 visits between them.

### UIP CLINIC

Ububele continues to offer Parent-Infant Psychotherapy (PIP) to parents and their infants. We have a team of psychologists offering the service and we are continuously raising the awareness of this valuable and necessary intervention. Ububele also has continued to offer a closed weekly seminar group where experienced practitioners share their work and learn from each other.

### PARENT-INFANT TRAINING

#### Introduction to Parent-Infant Psychotherapy Training

This Ububele training course is an experiential introduction to parent-infant psychotherapy. It is a course for professionals currently working with, and those interested in working with, babies, parents and caregivers. The focus of the course is on the critical importance of the parent-infant relationship, its development within the first 2 years and learning to observe the relationship. This is emphasized by the use of personal reflections, group discussions, readings and the use of video of both local and international content. The PIP course, which ran from January to March, trained 11 people.

#### Working with the Caregiver Infant Relationship (WCIR)

The WCIR training aims to assist, support and empower lay community members working with infants and parents/caregivers. A total of 18 people participated in the course – one was run at Ububele and another at a children's home.

#### UIP Study Group

This group of psychologists has completed the Introduction to Parent-Infant Psychotherapy Training course and has been running at Ububele for 10 years. During the year under review it was decided to refocus the group on one specific theorist at a time. Furthermore membership has been limited and a commitment to attend 70% of sessions is now required to retain membership.

### Newborn Behavioral Observation (NBO) coming to South Africa

Ububele reached agreement to bring the NBO tool to South Africa in 2015, a first for Africa.

According to the Brazelton Institute, which developed it: "The NBO is a structured set of observations designed to help the clinician and parent together, to observe the infant's behavioral capacities and identify the kind of support the infant needs for his successful growth and development. It is a relationship-based tool designed to foster the parent-infant relationship. The NBO system consists of a set of 18 neurobehavioral observations, which describe the newborn's capacities and behavioral adaptation from birth to the third month of life. While it describes the infant's capacities, the NBO provides parents with individualized information about their infant's behavior, so that they can appreciate their baby's unique competencies and vulnerabilities and thereby understand and respond to their baby, in a way that meets her/his developmental needs." <http://www.brazelton-institute.com/clnbas.html>





# PUBLICATIONS AND CONFERENCES

Aspoas, B. & Amod, Z. "A South African Study on Caregiver Perceptions of a Parent-Infant Intervention Implemented to Foster Secure Attachment". *Infant Mental Health Journal*, Volume 35, Number 6, November-December 2014.

Bain, K. "New Beginnings" in South African Shelters for the Homeless: Piloting of a Group Psychotherapy Intervention for High-Risk Mother-Infant Dyads." *Infant Mental Health Journal*, Michigan State University, Volume 35, Number 6, November-December 2014.

Nkosi, N.S. 2014. "The Baby Mat Project: Similarities and differences between the experiences and perceptions of mothers and therapists", dissertation as partial requirements for her MA in Clinical Psychology at Wits University.

## Ububele on World Stage



*Dr Celia Hsiao,  
Dr Katherine  
Bain, Melanie  
Esterhuizen and  
Katharine Frost  
in Edinburgh.*

Ububele impressed delegates at the **World Association for Infant Mental Health (WAIMH) congress** held in Edinburgh, Scotland. Over 1 500 delegates from all over the world were hosted from 14-18 June 2014.

Two senior psychologists at Ububele, Katharine Frost and Melanie Esterhuizen, together with Wits University researchers Dr Katherine Bain and Dr Cynthia Hsiao, presented their findings on the Ububele Mother-Baby Home Visiting Project in Alexandra, at a parallel session on 18 June. The 14th WAIMH world congress's theme was "Babies, their contribution – our responsibilities". The presentation was repeated in the form of a Scientific Meeting at Ububele on 19 August and there was much excitement and discussion. The research will continue in 2015 with several papers due to be published.



**International Association for Child and Adolescent Psychiatry and Allied Professions (IACAPAP) World Congress** in Durban, August 2014. The focus was on the future of child mental health diagnosis and intervention. Two Ububele psychologists, Nicki Dawson and Jade Richards, gave a presentation on the Baby Mat.



# EARLY CHILDHOOD DEVELOPMENT PROGRAMME

*The Early Childhood Development (ECD) Programme focuses on children from 3-7 years old. The programme runs two training courses concerned with the emotional development of children: Thinking about the Early Child and Developing the Emotional Literacy of Children using the Persona Doll. The Ububele Pre-School for 65 children is a model for holistic development.*

## EARLY CHILDHOOD TRAINING

The Developing the emotional literacy of children using the Persona Doll Course was run twice during the year. The first course ran during February and March and the second one during May and June. Two Thinking About

the Early Child courses were run in 2014, the first starting in February and ending in April and the second starting in September and finishing in November. This course is about child development from conception to 7 years of age.



**ABOVE:**  
*Graduates of  
Ububele's Thinking  
about the Early  
Child (TEC) course  
which was run  
over 9 weeks and  
finished in November.  
Congratulations to all!*



## REGGIO EMILIA

Gladys Langa, Julia Green & Evelyn Dubazana (left) from the Ububele Pre-school loved the Reggio Emilia training held at St Mary's School in Joburg from 24-26 June 2014. They learned plenty of innovative ways to ensure the child is central to the learning experience.



# THE UBUBELE PRE-SCHOOL

*This holistic pre-school serving the Greater Alexandra community, focuses on the educational, psycho-social and physical development of the child. Children and families in need are provided with a variety of therapy and counselling services. In addition, during 2014 13 of the preschool children received a weekly special time intervention. By the end of 2014, 2 of the 3 assistant ECD practitioners had completed their ECD level 4 qualification. The preschool cook attended a cooking course at Home Keepers S.A, "Kids Favourites 2".*



Spring Day



Fun on our new jungle gym



Fun at the Zoo



Parents morning at the Pre-School

## PSYCHOLOGY INTERNS

Each year Ububele hosts Psychology Masters' interns, who join the staff for the year-long internship programme prescribed by the Health Professions Council of South Africa. During 2014 the four interns were Lerato Hlalele, Senele Mduli, Mapule Morake and Steven Rebello. They had all successfully completed their internships by the end of the year.



## THERAPY AND ASSESSMENT CLINIC

The Therapy & Assessment Clinic provides services and interventions primarily to residents of Alexandra. The clinic enables Psychology Masters' students in their internship year to gain hands-on experience in providing psychometric assessments for children, therapy for children and adults, and other interventions. All the students' activities are strictly supervised by qualified psychologists. The number of clients seen at the clinic increased from 224 in 2013 to 256 in 2014.





# WORKING WITH GROUPS PROGRAMME

Learning about the psychology and emotional aspects of groups helps groups to fulfil their tasks and objectives. Training in group work is not easy to access in South Africa. It is an under-utilised and under-trained practice. Ububele's Working With Groups Course has been run for the past 10 years by an experienced faculty that developed the Group Analysis course for the South African context, based on the Institute for Group Analysis (IGA), London which recognises the course. Ububele sees this training as an important contribution to

building capacity in the mental health field and as especially relevant in under-resourced communities.

For the past 10 years, Ububele has run these transformative courses for people whose job entails being a group member or leader. The course is experiential, theoretical and practical. It is unique in that South Africans from a variety of backgrounds, occupations and experiences engage with one another. Participants emerge with greater understanding, sensitivity, tolerance

and insight into our complex national human landscape.

Ububele successfully ran the introductory and second year courses during 2014. Each course comprises 6 extended weekend blocks spread over the year. There were 20 participants enrolled on the Introduction to Working with Groups course and 7 on the second year course - Support Group Facilitation.

A new component to the programme was introduced in 2014, in the form of monthly peer

supervision and case presentation meetings for graduates of the second year. There were 8 participants in this forum during the year.



ABOVE: Faculty member Prof Assie Geldenhuys with WWG graduate Phethile Zitha who is a clinical psychologist at Ububele.

## OTHER TRAINING

A number of courses were run by external facilitators. Two of these related to our Home Visiting research project. Dr Celia Hsiao of the University of the Witwatersrand ran a Maternal Behaviour Q-Sort (MBQS) coding training course for 10 psychologists in January to increase our capacity to analyse the data collected in our home visiting research project, and Dr Michele Slead (right) of the Anna Freud Centre in London provided Parent Development

Interview (PDI) coding training in October. The PDI is a measure of reflective functioning also used in our research. Five Ububele staff and 10 others were trained.

In Addition, Dr Barnaby B Barratt ran a short course, Psychoanalytic Theory of the Psyche, in February, and David Hadley, a child psychotherapist from the UK, ran a parenting workshop in October entitled *Integrating Work with Parents and Children*



Dr Michele Slead of the Anna Freud Centre in London provided Parent Development Interview (PDI) coding training in October.

## ADVOCACY & COMMUNICATION

A new advocacy, communication and research coordinator post was created in 2014 as part of Ububele's partnership with the DG Murray Trust, which has funded the post and a number of related projects.

The primary focus is to advocate for change in how children are supported during the critical 'First 1000 Days' of life, from conception to two years old. This is the most important developmental period in a child's life, and not enough effort has gone into providing adequate care and support for South African children

during this period, contributing to South Africa's many social challenges. Although Ububele is primarily a service and training organisation, it has the expertise and experience to influence decision-makers in addressing barriers that are preventing children from accessing the care and support they desperately need. To address the issue during 2014 Ububele developed a number of materials, met with government at the local and clinic level, used social media and hosted scientific meetings to spread awareness and promote change.





## FUNDRAISER



Ububele raised over R5000 at the benefit performance of Mix Tape on 14 October. Thank you so much to all who supported us especially Daphne Kuhn as well as Bloom and Stone.



Cast members Kristy Suttner, "Katie", Vanessa Frost, "Vix", and Mortimer Williams, "Marvin".



Tony Hamburger speaking about Ububele before the show

## UBUBELE – ALEX CLINIC PARTNERSHIP GROWS

Agreement was reached at the end of 2014 that from February 2015, Ububele would have a permanent presence at the Brown House at Alexandra Clinic, which is a long-term partner of Ububele. This will enable us to assist many more people through

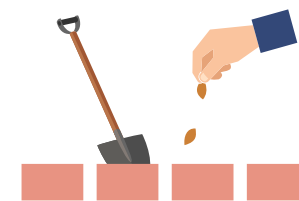
Ububele programmes, such as the Baby Mat, Parent Infant Psychotherapy, support groups and training. Even though our offices in Kew are only a few blocks from Alexandra, we are still too far away for many in need.



Labane Maluleke, CEO of Alex Clinic, speaking at the clinic's World AIDS Day event which was attended by many stakeholders including Ububele on 1 Dec 2014.

## STATISTICS FOR TRAINING & SERVICE DELIVERY

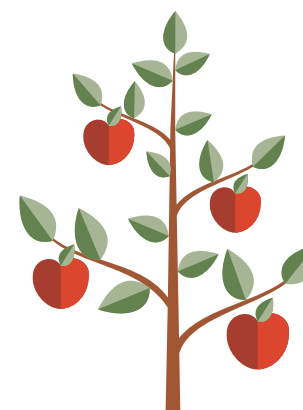
### BENEFICIARIES



UBUBELE TRAINED  
**343**  
PEOPLE DURING 2014.



THESE INDIVIDUALS WILL HAVE AN IMPACT ON AN AVERAGE OF  
**20**  
FURTHER INDIVIDUALS  
(MOSTLY CHILDREN UNDER 7) EACH,  
IN TERMS OF IMPROVED QUALITY OF CARE.



IN ADDITION

**1,472**  
INDIVIDUALS BENEFITTED FROM OUR SERVICES INCLUDING:

**68**  
PRE-SCHOOL PUPILS

**69**  
PEOPLE WHO RECEIVED INDIVIDUAL THERAPY

**94**  
CHILDREN WHO UNDERWENT PSYCHOMETRIC OR SCHOOL READINESS ASSESSMENTS

**79**  
PARENTS WHO RECEIVED ASSISTANCE

**490**  
MOTHER-BABY DYADS WHO ATTENDED THE BABY MAT OR RECEIVED HOME VISITS OR ATTENDED THERAPY

**56**  
CHILDREN WHO ATTENDED PERSONA DOLL GROUPS

See tables on next page.



Training	Participants	
	2014	2013
<b>Courses presented by Ububele Staff</b>		
Developing Emotional Literacy -Persona Doll	21	15
Thinking About the Early Child	30	39
Parent-Infant Psychotherapy	11	41
Working with the Parent-Infant Relationship	18	-
Home Visitors' training	17	4
Working with Groups: Introductory + SGF	27	29
Special Time	6	-
The Incredible Years	6	-
<b>Courses presented by external Trainers</b>		
MBQS Training – Celia Hsiao	10	-
Home Visiting & Bereavement – Joan Rafael-Leff	-	40
PDI – Dr Michelle Slead	15	-
Advanced PIP – Tessa Baradon	-	21
Psychoanalytic Theory of the Psyche – Barnaby Barratt	32	-
Thinking about Freudian Thinking – Barnaby Barratt	30	62
Thinking across Boundaries – David Hadley	-	23
Working with parents – David Hadley	70	70
<b>Tertiary Students Training Programme</b>		
Full time Psychology Masters internship	4	3
Work Placement: Honours in Psychology	-	2
<b>Clinical Supervision-based Training</b>		
Khanya Family Life Centre – Tony Hamburger	15	14
Ububele Pre-School – M Tandy/ J Green	6	6
Baby Observation – Suzanne Maiello/Nichi Casati	-	1
Rahima Moosa PIP Team	-	4
WWG Graduate Peer supervision meetings (UGASS)	8	-
PIP seminar group	7	-
<b>Professional development – Parent-Infant Study Group</b>		
	10	25
<b>Workshop-based follow-up training</b>		
Follow-up workshops for community-based caregivers	-	14
<b>Total people trained</b>	<b>343</b>	<b>413</b>

Clinical and Psycho-educational Work	Participants	
	2014	2013
<b>Ububele Pre-School Children</b>		
Special time	68	67
	13	-
<b>Therapy &amp; Assessment Clinic</b>		
Individual Therapy – children, adolescents and adults	69	52
Psychometric & school readiness assessments	94	122
Parent interventions	79	50
<b>Parent-Infant Programme – no. of dyads in brackets</b>		
Parents and infants visiting the Baby Mat	653 (327)	808 (404)
Mothers and infants attending therapy	28(14)	62 (31)
Mother-infant dyads visited at home	298(149)	176(88)
Mother-infant dyads pre-tested in the research control group	114(57)	86(43)
<b>Group Work</b>		
Children working in Persona Doll Groups	56	36
Child therapy group	-	6
Teen group	-	5
Young mothers' and babies' group	-	30(15)
Work Discussion Groups – community-based orgs & schools	-	10
Persona Doll sewing group	-	4
<b>Total beneficiaries of clinical and psycho-educational work</b>	<b>1472</b>	<b>1514</b>
<b>Total number of individual beneficiaries</b>	<b>1815</b>	<b>1927</b>





# DONORS

Grateful thanks to our donors and partners in 2014

## South African Donors

Albonico Sack Architects & Urban Designers  
Anglo American Chairman's Fund  
Ms Janet Annandale  
Dr Barnaby B Barratt  
Ms Bronwen Dawson  
Mr Justice Edwin Cameron  
Cwenga Technologies  
Discovery Fund  
Edgar Droste Trust  
Dee Smith & Associates  
Dis-Chem Foundation  
DG Murray Trust  
Mr Rory H Fife  
Mr Denis Goldberg  
Mrs Hillary Hamburger  
Mr Tony Hamburger  
Ms Rica Hodgson  
NE McKenzie  
Mr Getti Mercorio  
Mr Sibusiso Nsibanyoni  
PAKH & Cologne Dusseldorf Psychoanalytis Soc.  
Mr Rudolf Pienaar  
Mrs M Podbrey  
Mr Justice Albie Sachs  
Mr Norbert Sasse  
Ms Creina Schneier  
Mr Justice Ivor Schwartzman  
Ms Pippa Smith  
Mr & Mrs Smith  
Ms Eileen Thayser  
Mr Leon van Vreden  
Mr Gerald Volkel  
Verona Lodge  
Ms Janneke Weidema

## International Donors

Bertha Foundation  
Community H.E.A.R.T  
Förderverein Baragwanath-Soweto  
Ms Beata Hammerlich  
Ms Elke Horn  
Kukah Centre  
Mr Johannes Pfflin  
Mr Peter Pogany-Wnendt  
Ms Ruth Schmidt-Neven  
Ms Erda Siebert  
Ms Elda Storck  
Trinity House  
The World Childhood Foundation

## Donations in kind

Bloom and Stone  
Ms Irene Chait  
Dr Peter Crous  
David Lewis-Browne Framer & Gilder  
Mr Chris Dawson  
Dis-Chem Foundation  
Ms Terri Ella  
Mr David Hadley  
Ms Vanessa Frost and mothers group  
Mr Brad Kallenbach  
Kevin Bates Albert Carpets (KBAC) Flooring  
Ms Diane Kriegler  
Mr Steven Kuny  
Lego South Africa  
Ms Maddy Loynes  
Dr Julie Milton  
Phepa Cleaning  
Ms Sharon Raeburn  
Safe & Sound Learning Centre  
Ms Candice Schneider  
Dee Smith & Associates  
Ms Sharise Weiner & Warm the World  
Mr Nicholas Wolpe

## To make a donation

Ububele is grateful to all friends and partners . If you would like to donate our account details are:

**Account Holder:** The Ububele Educational & Psychotherapy Trust

**Name of Bank:** First National Bank

**Branch number:** 261251

**Account number:** 6231682062

Please send your name and address with proof of payment to [info@ububele.org](mailto:info@ububele.org) so we can issue you a Section 18A tax receipt. Thank you!



# ABRIDGED ANNUAL FINANCIAL STATEMENTS

2014 (January – December 2014)



FULL COPIES OF  
THE ANNUAL  
FINANCIAL  
STATEMENTS ARE  
AVAILABLE ON  
REQUEST.



## Trustees Report

### Nature of activities

The principal aim and objective of the trust is the establishment and conducting of a training and research institute to train psychotherapists and lay childcare workers and counsellors to work preventatively and therapeutically with children under the age of seven, their parents and other caregivers, as well as train in, and promote, experiential group work.

### Results of activities for the year

The results of activities for the year are fully disclosed in the attached annual financial statements .

### Equipment

During the year under review, the trust acquired equipment to the value of R 11,569 (2013: R314,407).

### Post financial position events

No material fact or circumstance has occurred between the statement of financial position date and the date of the audit report.

### Trustees

The following trustees served during the period under review:

- N C Manganyi
- B Dhlomo-Mautloa
- A S Hamburger
- TT Levin
- M E Maseko
- H Yilma

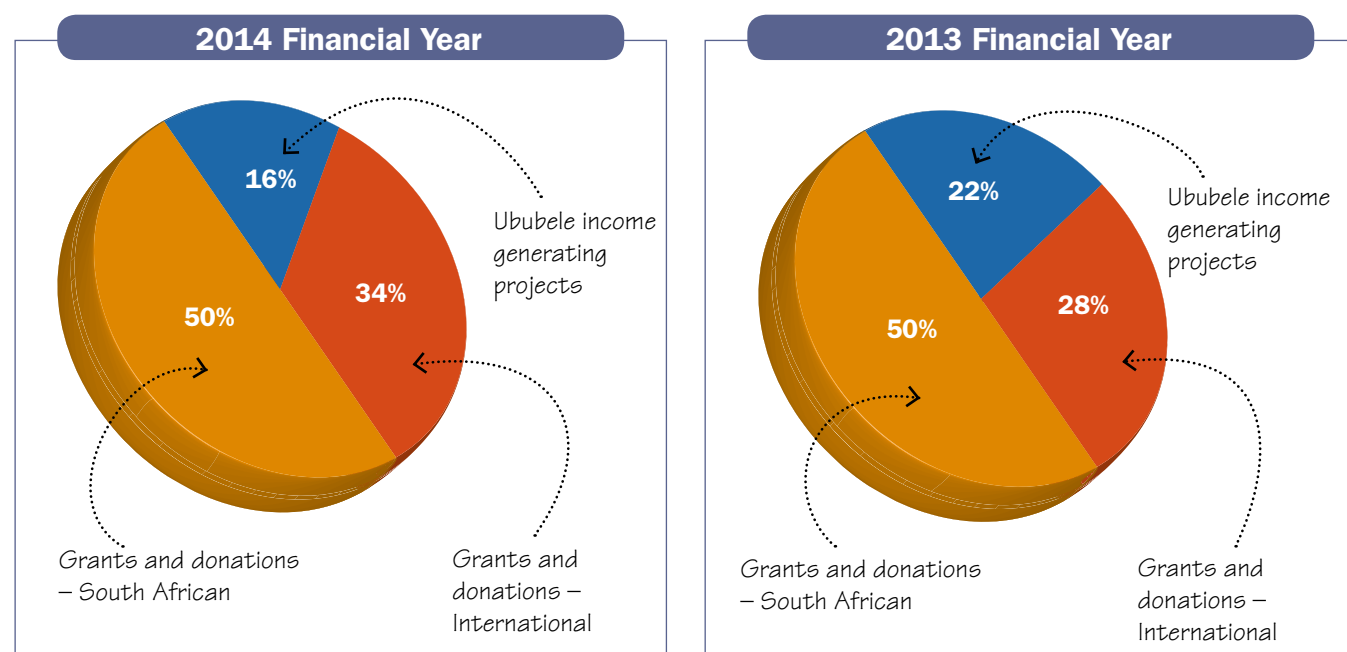




## Balance Sheet

	2014	2013
	R	R
<b>ASSETS</b>	<b>2 464 460</b>	<b>2 013 183</b>
<b>Non-current assets</b>	<b>238 313</b>	<b>322 105</b>
Equipment	238 313	322 105
<b>Current assets</b>	<b>2 226 147</b>	<b>1 691 078</b>
Inventory	27 127	33 723
Accounts receivable	29 263	19 980
Cash and cash equivalents	2 169 757	1 637 375
<b>Total assets</b>	<b>2 464 460</b>	<b>2 013 183</b>
<b>EQUITY AND LIABILITIES</b>	<b>2 464 460</b>	<b>2 013 183</b>
<b>Reserves</b>	<b>195 109</b>	<b>225 022</b>
Accumulated surplus	195 109	225 022
<b>Current liabilities</b>	<b>2 269 351</b>	<b>1 788 161</b>
Accounts payable	122 884	110 064
Deferred income	2 146 467	1 678 097
<b>Total reserves and liabilities</b>	<b>2 464 460</b>	<b>2 013 183</b>

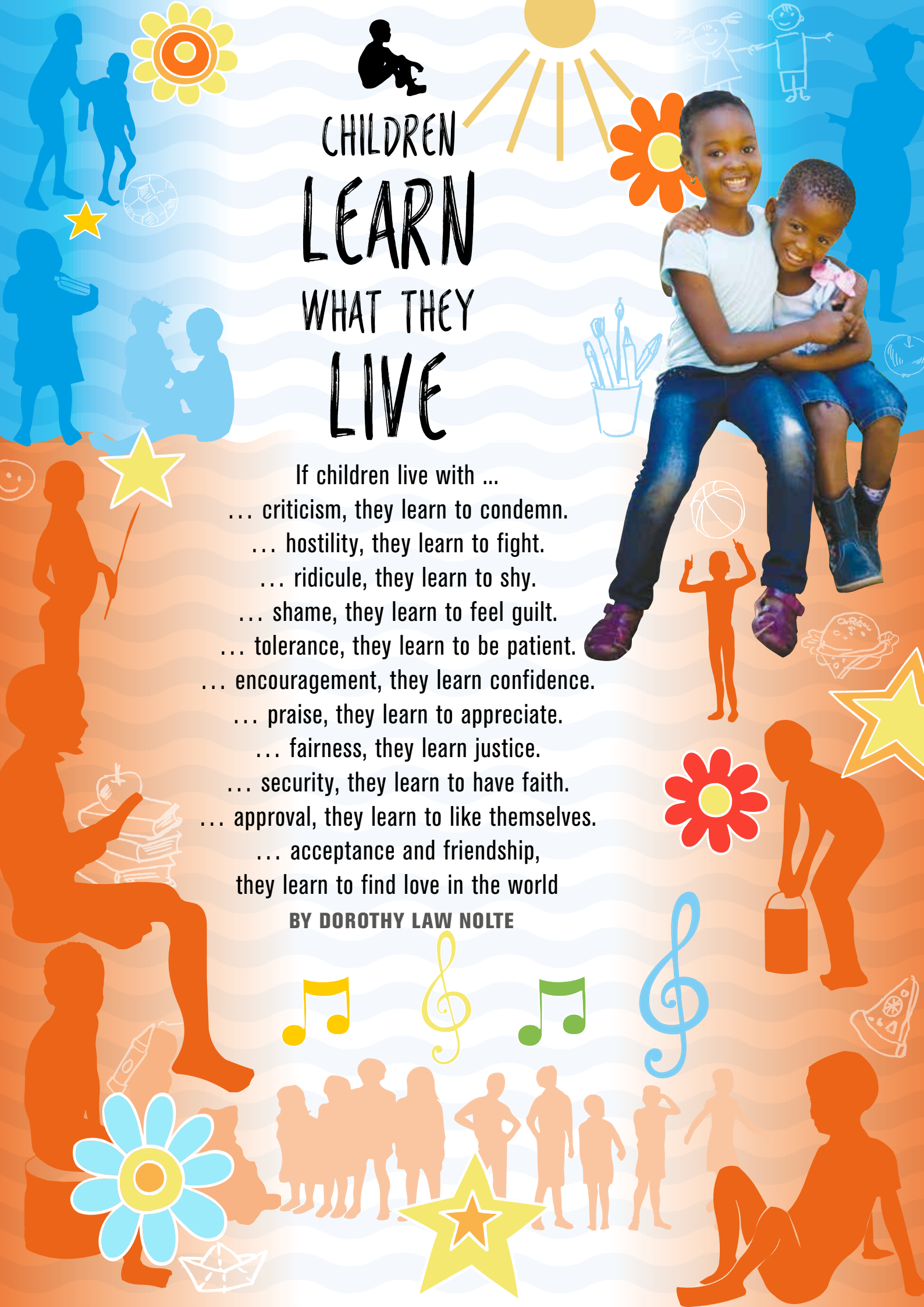
## Ububele's Funding Income Breakdown



## Income Statement

	2014	2013
	R	R
<b>INCOME</b>	<b>5 701 905</b>	<b>4 508 898</b>
Grants and donations – International	1 942 642	1 290 011
Grants and donations – South African	2 506 457	775 848
Grant- National Lottery Distribution Trust Fund	-	1 086 500
Service Level Agreements – DOSD	197 010	188 430
Other donations	146 448	189 074
Fee income	770 112	766 606
Hiring and catering income	93 148	104 533
Interest received	26 791	7 011
Other fundraising	7 490	43 775
Profit on disposal of assets	-	15 000
Sundry income	11 807	42 110
<b>EXPENDITURE</b>	<b>5 731 818</b>	<b>4 579 585</b>
<b>Programme costs</b>		
<b>Early Childhood Development Programme</b>	<b>1 135 544</b>	<b>925 983</b>
Pre-school	593 782	629 871
Early Childhood Training	541 762	296 112
<b>The Umdlezane Parent-Infant Psychotherapy Programme</b>	<b>1 370 055</b>	<b>1 383 909</b>
baby Mat project and other	59 293	287 134
Mother-Infant Home Visiting Project	1 310 762	1 096 775
<b>Group Work Programme</b>	<b>463 680</b>	<b>411 054</b>
<b>Tertiary Students' Training Programme</b>	<b>344 988</b>	<b>236 000</b>
<b>Communication, Advocacy and Fundraising</b>	<b>266 482</b>	<b>158 812</b>
<b>Venue hire</b>	<b>84 565</b>	<b>103 228</b>
<b>Management and Administration</b>	<b>2 066 504</b>	<b>1 360 599</b>
Salaries, wages and contributions	997 772	476 437
Administrative and operating costs	756 882	534 795
Property & building maintenance	311 850	349 367
<b>(DEFICIT) FOR THE YEAR</b>	<b>-29 913</b>	<b>-70 687</b>





# CHILDREN LEARN WHAT THEY LIVE

If children live with ...  
... criticism, they learn to condemn.  
... hostility, they learn to fight.  
... ridicule, they learn to shy.  
... shame, they learn to feel guilt.  
... tolerance, they learn to be patient.  
... encouragement, they learn confidence.  
... praise, they learn to appreciate.  
... fairness, they learn justice.  
... security, they learn to have faith.  
... approval, they learn to like themselves.  
... acceptance and friendship,  
they learn to find love in the world

**BY DOROTHY LAW NOLTE**

