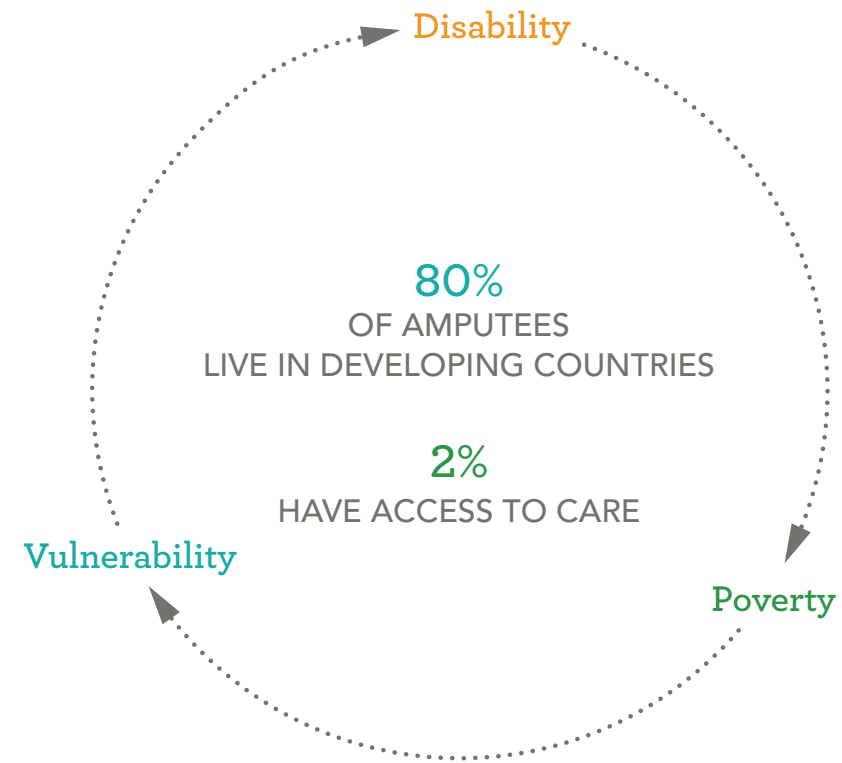






CONTENTS



Amputees are not disabled by a missing limb,
but by a missing prosthesis.

Director's Message	4
Story	5
Special Programs	6
Model	8
Vision	9
Strategy	10
Impact	11
Culture.....	12
Team	13
Partners.....	14
Thanks	15

Dear Friends,

ROMP has always been guided by a simple principle: every patient's needs and goals override the socioeconomic constraints in which they live. We believe that amputees are not disabled by a missing limb, but a missing prosthesis.

This year ROMP redefined what is possible in a sector of global health and technology impacting over 5000 individuals with disabilities. We initiated **Climbing for ROMP**, our largest advocacy event ever. Together with eight amputee athletes, we climbed a 19,000 foot volcano, demonstrating what an empowered human spirit looks like. As part of the same strategy, we organized 22 solidarity climbs in 13 countries to commemorate the 25th anniversary of the American's with Disabilities Act.

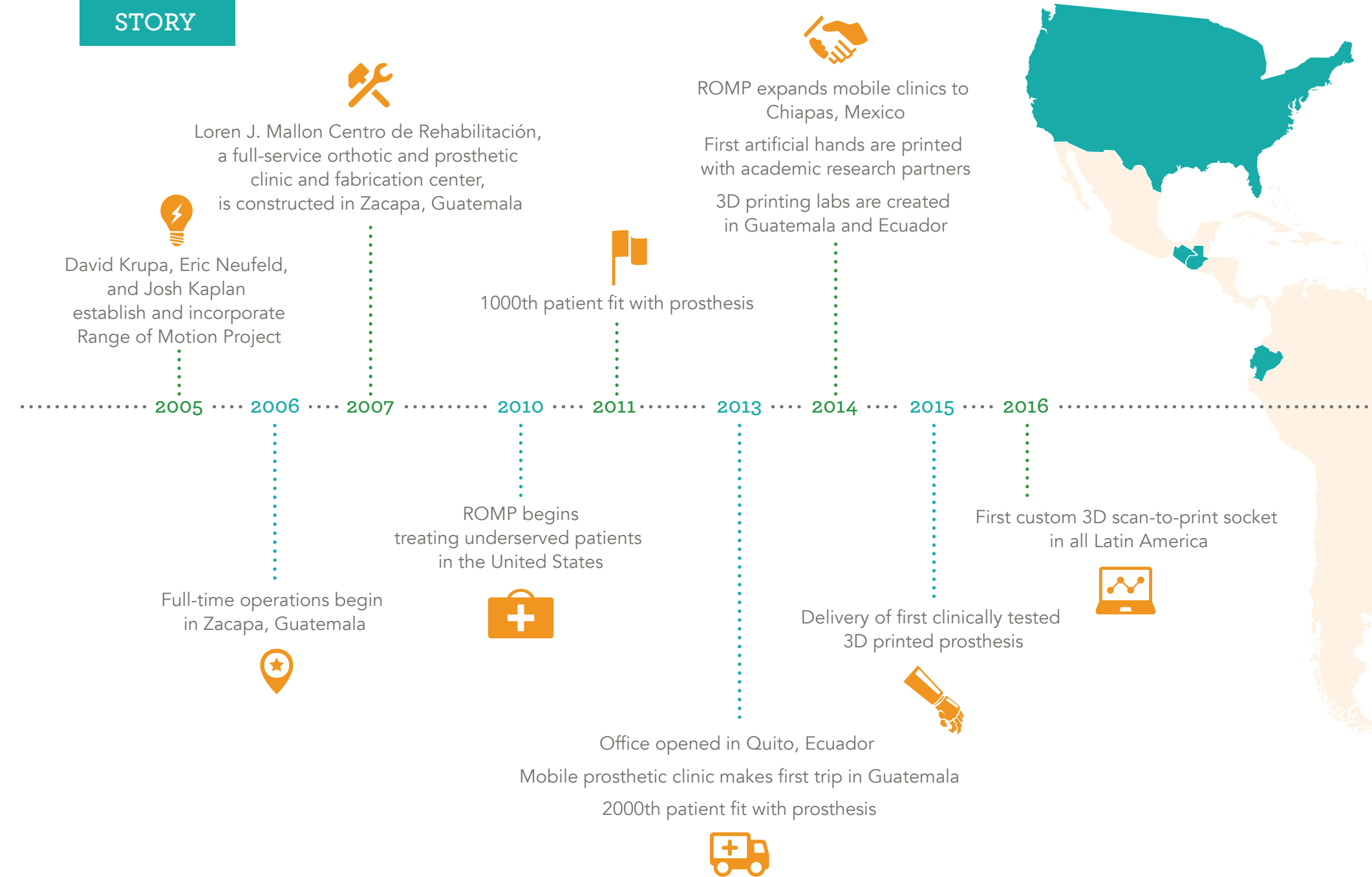
In Guatemala, our **3D printing labs** delivered their first clinically-tested 3D printed prosthetic hands, proving that even the most remote reaches of the world can excel in high-quality, high-tech prosthetic solutions.

This was the most dynamic year in the organization's history. We reached important milestones on our march towards our ultimate goal to redefine the distribution of prosthetic and orthotic care throughout the world. With your continued support, I know that we will achieve that.

With gratitude,

Patrick Mathay
Executive Director

STORY



Climbing for ROMP

2015 marked the 25th anniversary of the Americans with Disabilities Act. Together with the US Embassy in Quito, Ecuador, we organized a daring expedition to the summit of Volcán Cayambe in Ecuador. Our goals were to connect people of all backgrounds in this common cause and allow people with disabilities to redefine their human potential. As part of the same program, we organized 22 solidarity climbs in 13 countries with over 150 climbers, raising over \$50,000 for our patients' prosthetic rehabilitation. A feature length documentary of the event, *In Extremity*, will be available summer 2016.

ROMP Dev Lab

ROMP believes that 3D printing and scanning technology will fundamentally change the way that people access prosthetic care. In 2015, ROMP expanded its 3D printer labs in Guatemala and Ecuador, allowing our clinicians to collaborate with university partners and medical experts on prosthetic device designs while sourcing patient feedback in real time. We are grateful to work with investigators from the University of Victoria and the University of Illinois on these exciting and meaningful projects.

Clinical Field Education for Prosthetic Residents

Moving the ROMP legacy forward, we continue to host groups of Prosthetic residents and students from around the world, including Baylor University, Northwestern University, and Universidad del Occidente in Guatemala. As demand for this program grows, ROMP envisions this being a critical part of the foundation for clinical care.

Climbing for ROMP: Team Ecuador



MODEL

VISION

Research

- Needs assessment study to determine prevalence of amputation in resource poor areas
- Clinical research and device testing with academic partners

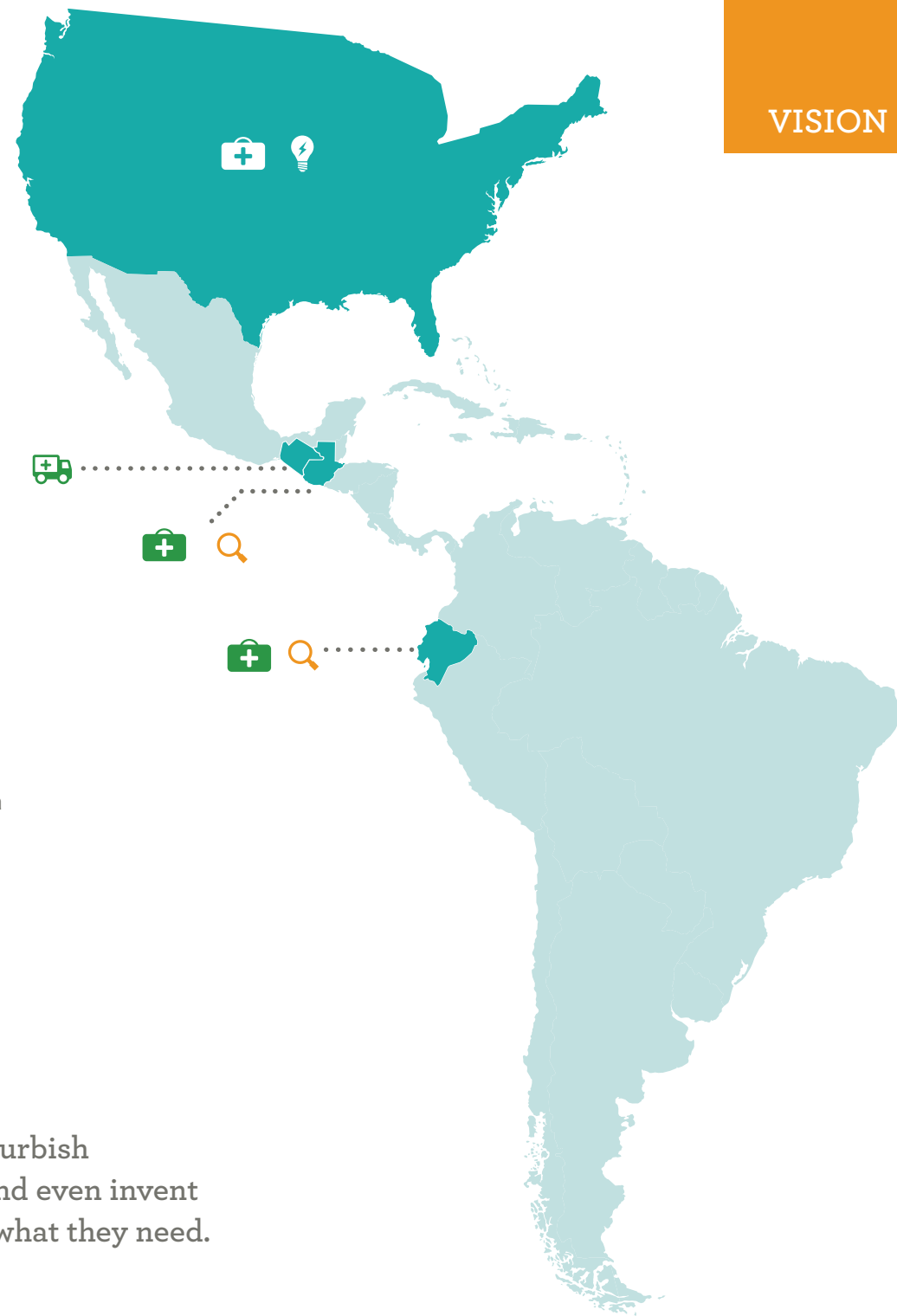
Patient Care

- Strategic partnerships with prosthetic manufactures to reduce cost
- Locally staffed and full time clinic in Zacapa, Guatemala and Quito, Ecuador
- US patient care via medical partners in Boston, Chicago, Denver, Forth Worth, San Antonio
- Mobile prosthetic clinics in Chiapas, Mexico
- Partnerships with Partners In Health and Wuqu' Kawoq | Maya Health Alliance

Technology

- 3D printed prosthetic devices through locally staffed labs in Ecuador and Guatemala
- Testing 3D printing custom socket fabrication

All amputees deserve the best care possible. We refurbish donated components, purchase new components, and even invent components—whatever it takes to get our patients what they need.

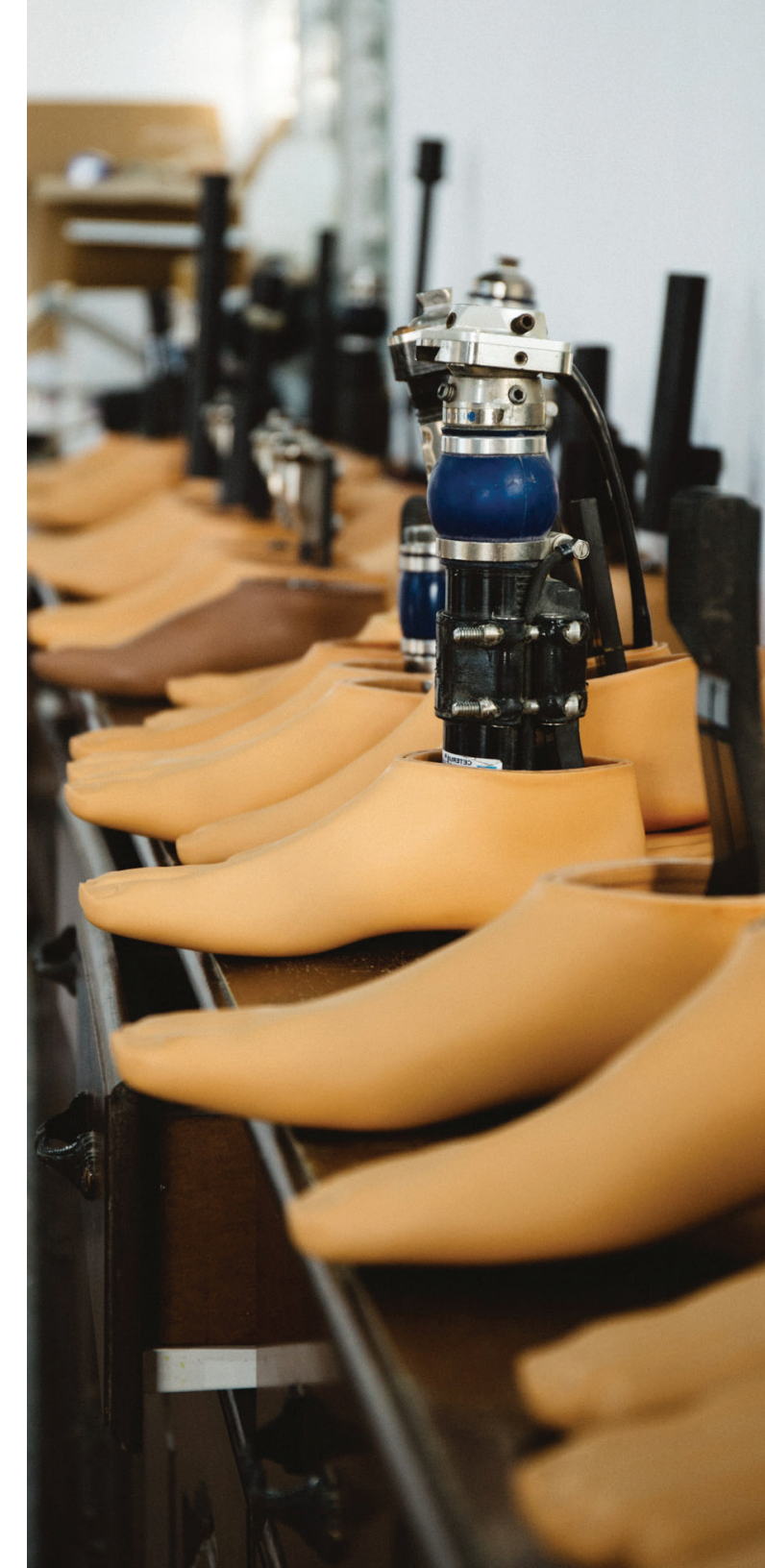


Prosthetic limbs and orthotic braces are not simply medical devices, but instruments of personal empowerment.

We believe in equal access to prosthetic and orthotic services that facilitate independence through mobility.

We recognize the dual hardships of living in poverty with a disability, and stand in solidarity with those who are made to suffer from an unequal distribution of care.

We understand that disability is caused by broken devices and broken healthcare systems—not broken bodies. We work to increase the mobility, visibility, and dignity of all those marginalized by lack of access to rehabilitative technology.



STRATEGY

All ROMP's efforts are directed toward maximizing value for our patients. We reach that goal through a three-pronged strategy of clinical care, local investment, and advocacy.

Quality Clinical Care

- Provide medical care based on medical need, not cost
- Apply evidence-based standards that offer the best patient outcomes
- Develop and distribute high-quality technologies at low cost

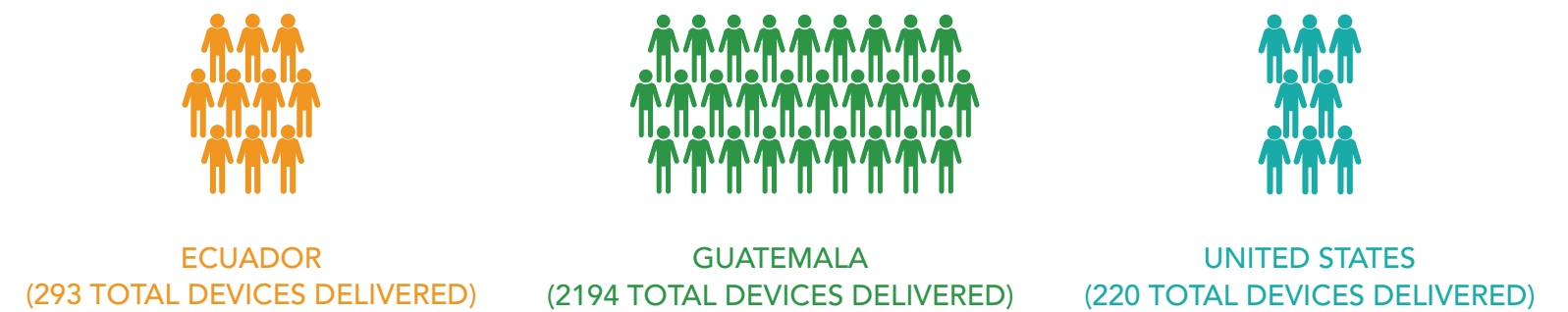
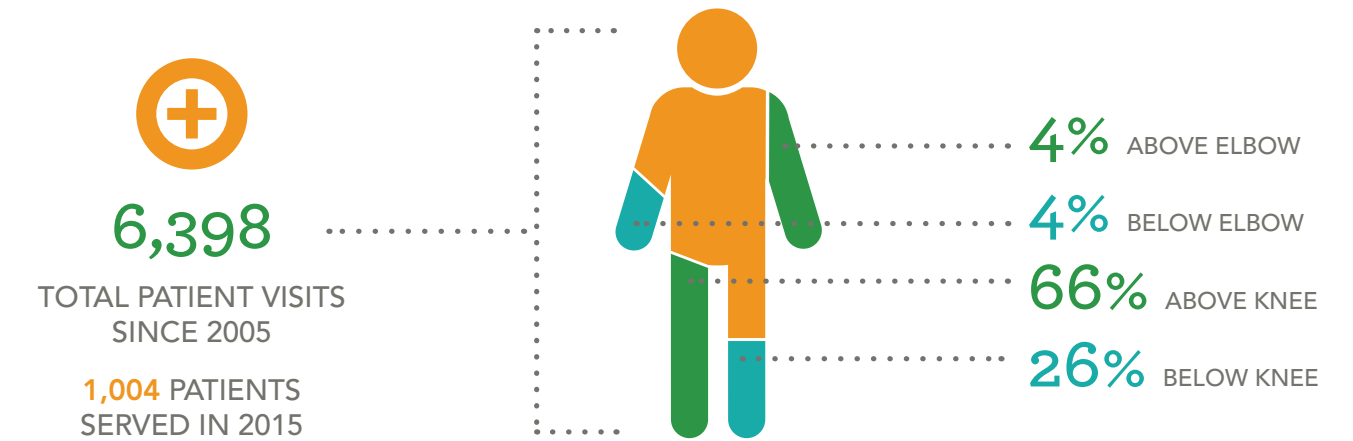
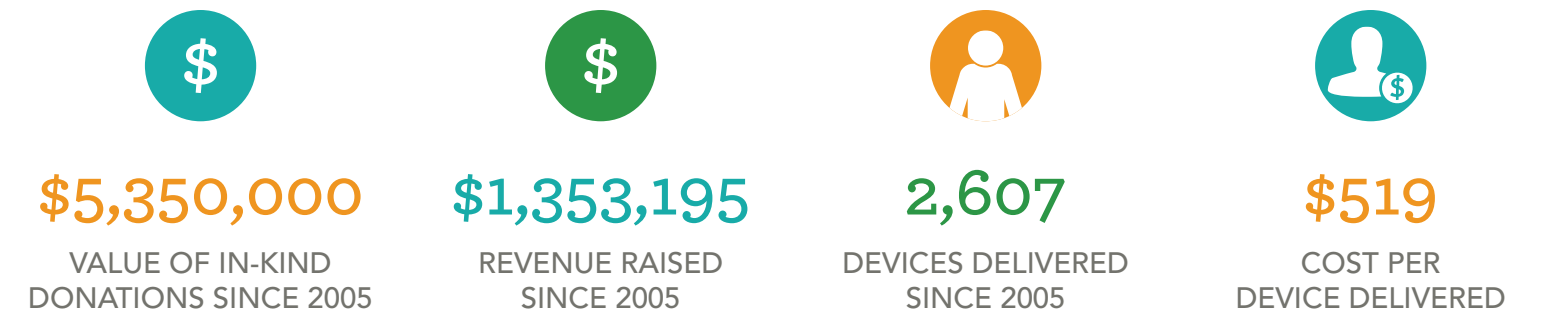
Local Investment

- Train and employ local practitioners to provide services
- Strengthen local health systems through strategic partnerships
- Stimulate development through buying and hiring locally

Advocacy

- Raise public awareness of global lack of prosthetic and orthotic care
- Enable those with disabilities to redefine their human potential
- Connect people of all backgrounds in a common cause: mobility

IMPACT



CULTURE



ROMP is a mobility organization.

Mobility has multiple meanings for our work. In helping our patients achieve physical mobility, we endeavor to help them move to greater economic security. This dual concept forms the heart of ROMP's mission, and is at the core of our organizational culture.

- 1 Patients first** Patient need is greater than everything else.
- 2 Speed wins** The quicker we move, the quicker our patients get moving. It's that simple.
- 3 Endurance** Beyond mountains, there are more mountains. Our team is gritty, entrepreneurial, and dedicated to turning our vision into a reality, no matter how long it takes.
- 4 Flexibility** Obstacles should be avoided when possible and tackled when necessary. We're nimble and strong enough to do both, and smart enough to know the difference.
- 5 Progress** Conventional problems can be solved by unconventional solutions. We invest in technology because our patients deserve the very best care, even if we have to invent it ourselves.

TEAM

ROMP is guided by a group of individuals with the knowledge, experience, and passion to move ROMP into another successful decade.

Board of Directors

Matt Bulow Certified Prosthetist, Founder and CEO of Bulow OPS / Bulow Clinic Partners

Sandy Dukat Consultant and 2x Paralympian, 3x Bronze Medalist Alpine Skiing

Josh Kaplan Attorney, Entrepreneur, Consultant for numerous tech based businesses at Troglia Kaplan, LLC/Propelr Music, LLC and ROMP co-Founder

David Krupa Certified Prosthetist at Krupa O&P and ROMP co-Founder

Eric Neufeld Regional Managing Partner at Bulow Clinical Partners and Certified Prosthetist/Orthotist and ROMP co-Founder

Lindsay Senter Director of Research and Evaluation at Cicatelli Associates Inc

Hirshini Von Kalm Self employed - Entrepreneur and Global health advisor in Program development, implementation and measurement and evaluation

Carrie Weingart Graphic Designer and Owner of Carrie Weingart Designs

ROMP GLOBAL

Our team is lean on cost, not on impact



3
Full-Time Staff

5
Volunteer Staff

ROMP GUATEMALA

Local clinicians—the people closest to their communities—serve ROMP patients



7
Full-Time
Clinical Staff

PARTNERS



United States

FUNDING

Louis M Berkowitz Foundation
Grand Challenges Canada
Libertyville Noon Rotary Club
Manaaki Foundation
Scheck and Siress
TripAdvisor Charitable Foundation

IN-KIND

Barr Foundation
Ossur Americas
SalesForce Foundation
Google.org

INSTITUTIONAL

Baylor College of Medicine, Prosthetics and Orthotics Program
Bulow Orthotic and Prosthetic Solutions
Northwestern University Prosthetic and Orthotic Center
Olive Media
Purdue University College of Engineering
Scheck and Siress
University of Illinois
University of Victoria
Duke University – Duke Engage Program

Guatemala

IN-KIND

Hospital Regional de Zacapa

INSTITUTIONAL
Partners In Health (Compañeros en Salud)
Hearts in Motion
Wuqu Kuwaq – Maya Health Alliance
Universidad Mariano Galvez
University of Victoria

Ecuador

FUNDING

United States Embassy

IN-KIND

Buen Trip Hub
Nana's Attitude
Pacari Chocolate
Tatoo
Velez Coffee

INSTITUTIONAL

Fundación Hermano Miguel
Protéus

Our volunteers and donors are the power behind ROMP.

THANK YOU

FOR YOUR GENEROSITY AND SUPPORT





ROMP USA
2425 S. COLORADO BLVD #100
DENVER, CO 80222
UNITED STATES

ROMP GUATEMALA
HOSPITAL REGIONAL DE ZACAPA
+502 7941 0968
📧 GUATEMALA@ROMPGLOBAL.ORG

ROMP ECUADOR
EDIFICIO ALMAGRO PLAZA, STE 508,
PEDRO PONCE CARRASCO E8-06 Y DIEGO DE ALMAGRO
QUITO, ECUADOR
📧 ECUADOR@ROMPGLOBAL.ORG

LET'S KEEP IN TOUCH

ROMPGLOBAL.ORG • 📧 INFO@ROMPGLOBAL.ORG • 🐦 [@ROMPGLOBAL](https://twitter.com/ROMPGLOBAL) • 📘 FACEBOOK.COM/ROMPGLOBAL