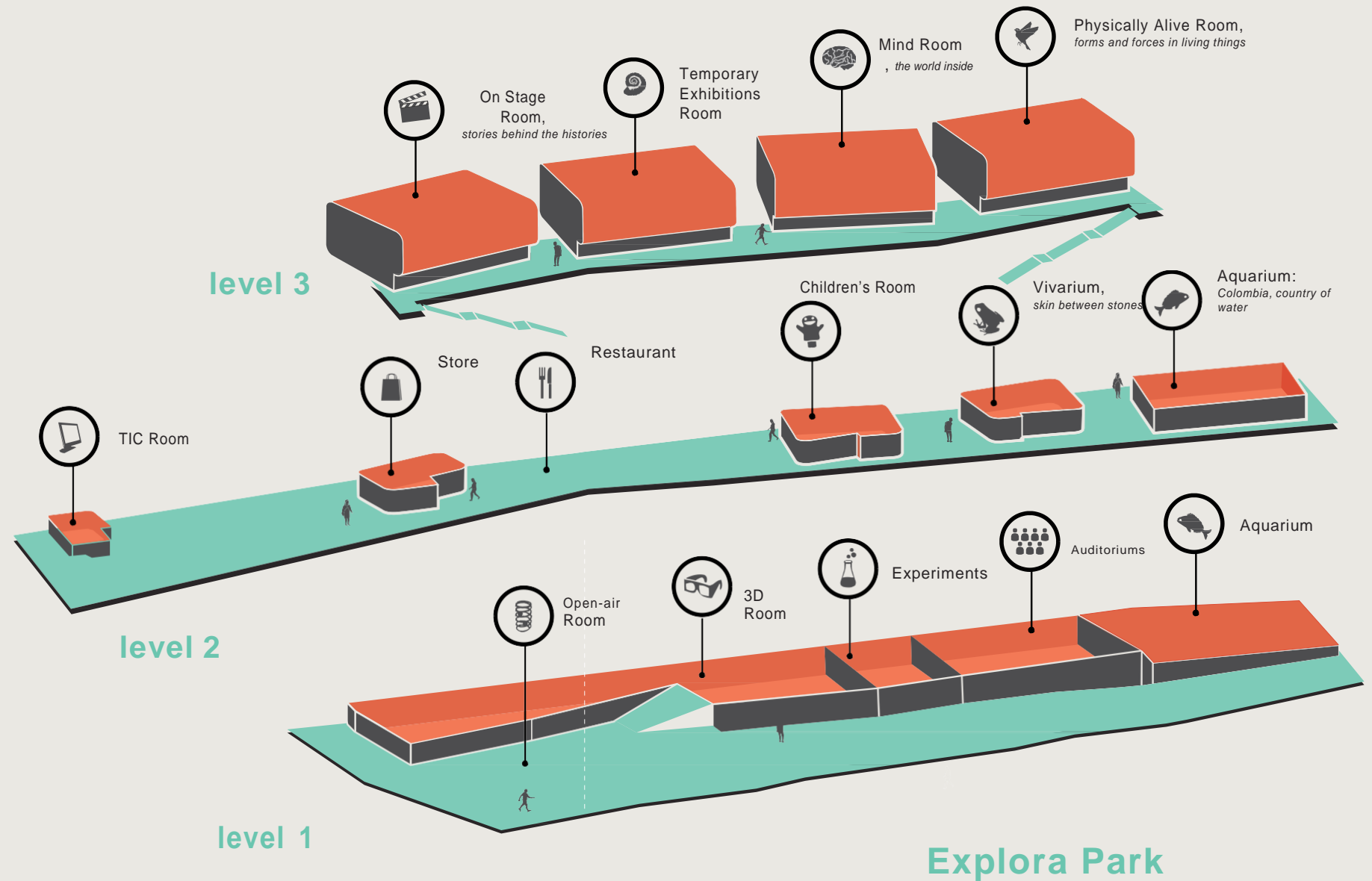
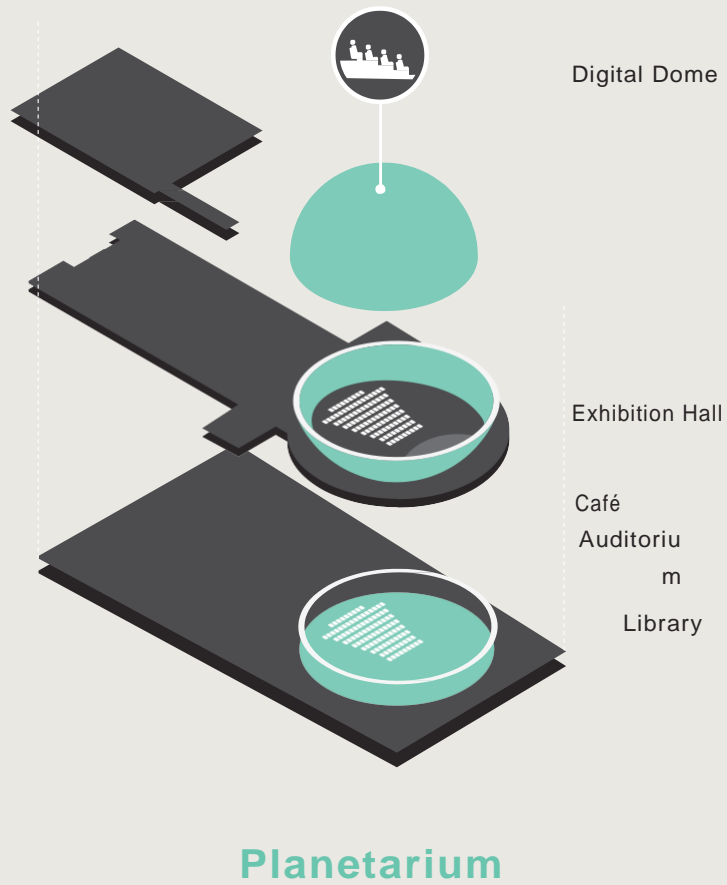




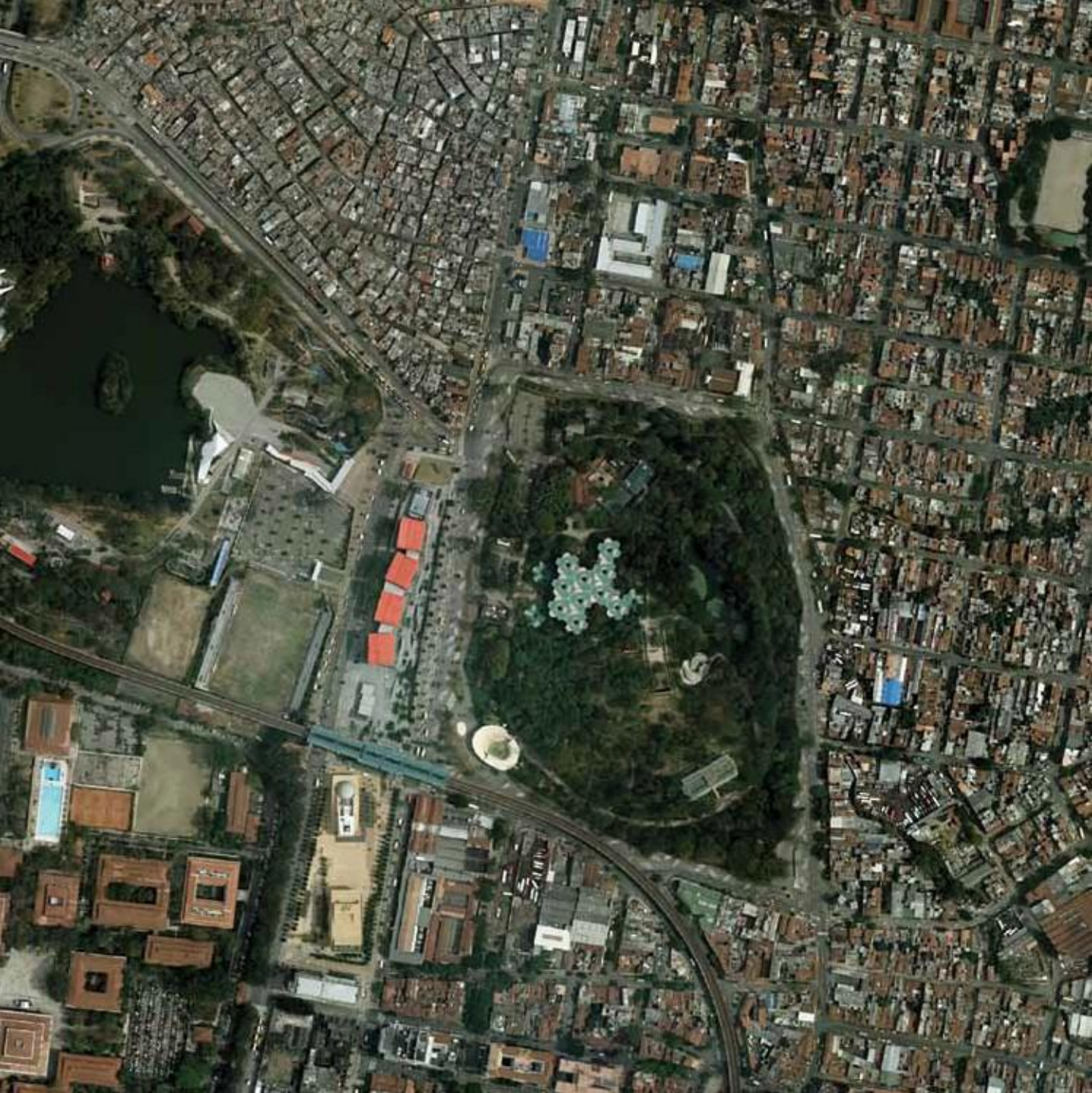


We inspire, inform and transform through interactive experiences that contribute to the public acquisition of the scientific, technological and social knowledge necessary to build a better society.





We are a symbol	.11
We are close by and strategic	.12
We are a team and development	.15
We are credible	.17
We are diverse	.19
We are Colombia, country of water: Aquarium	
.21 We are land: Vivarium, skin between the stones	.21
We are neurosciences: Mind Room	
.23 We are forms and forces: Physically Alive Room	26
We are stories: On Stage Room	.29
We are family: Children's Room	.32
We are special effects: 3D Room	.32
We are science outside: Open-Air Room	. 35
We are a social laboratory: TIC Room	. 37
We are your hands: Experimental Room	.37
We are the Planetarium	.38
We are itinerants	.42
We are builders of experiences	.45
We are Explora education	.47
We are connected	.48
We are programming	.50



We are a symbol

Four red boxes floating against the horizon of the working class neighborhoods of Medellín, adding color to the green landscape of mountains and becoming a symbol of the transformation of the city based in its inclusive approach to education and recreation.

Explora is the north of Medellín, which has gone from being a marginal area of the city to being, with nine added civic projects, the most attractive tourist destination in the city and an important future educational, science and technology corridor of the city.

We are close by and strategic

We are in the new **Northern Zone** of Medellín, with direct access from the Universidad station of the **Metro**, and less than five minutes from the center of the city.

Explora has the attributes of a true **park**, with its own gardens and large forests, such as that of the adjoining Botanical Garden of the city. The **Northern Zone** forms the largest area dedicated to education and recreation in the city and is made up of nine places full of vitality, such as the University of Antioquia, the Moravia Cultural Center, the House of Music, and our Planetarium in the Park of Wishes among others.

This zone offers many options for its inhabitants and visitors. It will be part of the new science and technology district of Medellín.



We are a team and development

We are the talent of a qualified and diverse group of people, we are a conversation between different areas of knowledge that have built an experience that is socially impactful, socially organizing, and formative of a growing public for science and technology as cultural adventures.

Explora has allowed for the emergence of a symbol: the innovation of opportunities that create well-being and dignity for people. We are leaders in running interactive environments and successful experiences that promote the acquisition of knowledge.

Our work areas include:

Innovation and development of encounters • Aquariums and Planetariums
• Education and distribution • Social management and social business responsibility • Communications and cultural management • Marketing and services • Operation and maintenance of aquariums, parks and related entities



We are credible

The important mission that society has entrusted to Explora to inspire, communicate and transform, through settings and encounters that contribute to the acquisition of scientific and social knowledge, has sparked wide support, a convergence of social forces that strengthens us. This

mission has been achieved with the enthusiastic support of citizens and of people that come from many different social sectors: business, government, education, science, social action, and the media sector which allows us to reach others... all have participated in this search to innovate, to build a society of inclusive knowledge.





We are diverse_

We have: Fresh and salt water aquariums • A vivarium with reptiles, amphibians, arthropods • Three interactive science and technology rooms

• Children's Room • Temporary Exhibitions Room • Open-Air Room • 3D Cinema • Planetarium with a digital dome and exhibition rooms • Versatile auditoriums

and the best technology for events •

Encounters: activities for learning by doing and to enjoy yourself learning •

Constantly renewed programming •

Traveling encounters •



We are water

Aquarium: Colombia, country of water_

A flooded forest is a great space of fresh and salt water, which invites you to discover the hidden life of the seas and rivers such as the Amazon, the Orinoco, the Magdalena... more than 4,000 inhabitants in 18 fresh water and 10 salt water spaces for discovering Colombia, country of water.

We are land

Vivarium, skin between the stones_

Small and yellow, the most poisonous frog in the world, the *Phyllobates terribilis*, surprises us next to the legendary axolotl and the large anaconda, in 27 terrariums inhabited by amphibians, reptiles and arthropods. Skin between the stones!



We are NEUROSCIENCES

Interactive Mind Room, the world inside_ An aerial neural network illuminates the darkness of this room made with scientific advice from the Neuroscience Group of Antioquia. Six travel-sections that confront us with what we believe ourselves to be and what we really are:

- Brains: a world of neurons • Perceive: the distorted world • Think: The world remembered and planned
- Communicate: The world expressed • Dream: The fantastic world • Experience: The world in games•

Area: 900 m²



55 encounters



TOCAR Y RECORDAR

Reserva este momento para jugar

Este es un momento para jugar y recordar. Aquí puedes tocar y recordar. Este es un momento para jugar y recordar. Aquí puedes tocar y recordar. Este es un momento para jugar y recordar. Aquí puedes tocar y recordar.



03

We are life

Interactive Physically Alive Room, forms and forces in living things_

Put yourself in a soap bubble and understand physical phenomena, compete in order to discover speed, kick a soccer ball and measure the force, relate natural forms and find their function, discover how the eye and heart work and their use of electricity in an easy to understand manner...From the simple to the complex, a rich inventory of experiences connected to the everyday to recognize the forms and forces in living things and physics as a science close to everyone.

Area: 900 m²

60 encounters





We are stories

On Stage Interactive Room, stories behind the histories_

Star in a short film, make a radio soap opera with friends, commentate a football game, appear on the front page of a newspaper, create a television program...

On Stage is an entertaining factory of stories by visitors, designed to make communications technology a celebration of creativity, one that goes beyond the devices used to make them.

Area: 900 m²

35 encounters



On Stage Room.

A family recording sound effects for
their radio soap opera.

We are family

Children's Room_

This room is designed for children for newborns to six-year-olds to enjoy their senses, to stimulate their creative capacities and to challenge themselves to improve their abilities to interact with others and with their family.

We are special effects

3D Cinema Room_

A pioneering space in the city, this room multiplies the effects of an immersive wrap-around experience. We program educational materials on nature. It is possible to enjoy a visit to the cities submerged at the bottom of the ocean – coral reefs, an expedition to the center of the planet or the remote world of the dinosaurs... a different entertainment schedule for those looking for an alternative.





We are air

Open-Air Room_

Large-scale physical experiences amid fertile native gardens and a cloud forest. Archimedes' Screw is the center of this space filled with physical games that use water, sand and wind, that offer the visitor the attractions of outdoor experimentation.

Area: 900 m2

22 encounters





We are a social laboratory

Collaborative_

The public laboratory-workshop, currently in construction, will be equipped for experimentation and collective creation based in different fields of knowledge. It will be an innovative meeting place in the Metro-Explora plaza.

We are your hands

Experiment_

Build a small robot, experiment with soap, create a radio program...Each room of Explora has a space for experimentation, for enjoying the process of learning.

We are the Planetarium_






The digital dome, an immersive wrap-around experience • two levels of earth science and space interactive rooms • experimental activities • a library specialized in the spreading of the sciences • a conference room for astronomy groups from the city and the region • store • auditorium • observation decks • mobile planetarium • sky observations • conference programming • seminars and meetings of astronomy groups • astronomy courses for people of all ages•





We are the universe

Planetarium of Medellín_

 Diameter: 15 m
 Inclination: 27°
 Resolution: 4k
 Sound system: 7.1
 Seats: 111

See the sky at night, enjoy the high quality contents in the dome, attend regular programming that highlights astronomy as a cultural adventure... an opportunity to escape beyond the Universe.

We are itinerants

Explora goes beyond its physical home space to visit a diverse range of communities with its traveling programs:

Exploramobile, Exploramobile Mind

Planetario mobile, for voyages through the Universe.

The Exploramobile and the Exploramobile Mind – derived from the permanent neuroscience room, Mind, the world inside – are traveling experiences of Explora that relate to the communities visited through diverse areas of knowledge presented through workshops, demonstrative and interactive experiences, experimental activities and games of logic. They are ideal formats for experimentation and public participation in the construction of knowledge.





We are builders of experiences

We create experiences with and for our partners, we advise on the conception of projects for knowledge distribution from start to end, from temporary and permanent exhibitions to educational models, experimental workshops, strategies for working with diverse communities, events, multimedia pieces, videos, publishing projects...



We are Explora education

Our educational program is designed to accompany the educational system through a wide range of learning options based in interactive knowledge acquisition linked to local contexts. This educational policy has various lines of development:

Building citizenship and the integral formation of citizens, appropriation of knowledge, social inclusion and environmental conservation education.

Explora Park has been formed for the communication of knowledge in the natural sciences, physics, neuroscience, astronomy, biology and its relationship with society, technology, the comprehensive use of the media and robotics. We develop permanent and temporary audiovisual exhibitions, printed materials, plays, and training for communicators, among other strategies.

We are connected

There are several fronts of interaction with the educational community.

Educational routes: routes specially designed by Explora Park and the Planetarium with focus on various areas of knowledge: astronomy, biodiversity, physics, and mathematics, among others. We design visits with specific objectives alongside teachers that complement the activities taught in the classroom. The Aquarium and the Vivarium, interactive stations and experimental activities make this an inspiring experience that transforms teachers and students alike. The route through the exhibition has a "before" so that visitors will know what will be done during their visit; a "during" that includes tours within the park or the Planetarium and an "after," made of proposed follow-up activities that give continuity to the experience.

MAE: Teacher Friends of Explora (Maestros Amigos de Explora) is a community of collective learning that develops encounters to renew classroom practices: pedagogical routes, and workshops in diverse areas that use contextualized contents, useful inside and outside the classroom.



We are programming

In Explora science has the temperature of life.

The Park and the Planetarium offer ever-changing programming. From astronomy shows in the Dome of the Planetarium and films in the 3D Room, to the Science Theater with the “Exploration Machine” Collective, observations of “The Sky Tonight” or meetings of the classic free program “Science on Bicycle.” This last program has more had more than 200 programs with experts, almost all of them available on our website. People with less well-known minds and others with Nobel prizes have all helped bring together this public programming, an attractive way to approach science through the voice of its protagonists. And while always trying to make sure that science has the temperature of life. Rodolfo Llinás with 100 musicians live on stage explaining why the brain is a musical organ, a trip through the Amazon jungle illustrated by a *mamo*, or a chemical-gastronomy show on eggs are examples of these successful encounters that fill our stages.



We are what our visitors
live.

We are what you are, but,
more than anything else, what
~~you could be.~~
