

# TOGETHER SARANGBAT



*We sow the  
Seeds of Love* 

# Contents

Sarangbat Organizational Introductions

Inhwa Village of Love

Business enterprise participation

Facility business management

Facility supporting business

Domestic supporting business campaign

Global supporting business

Donation Status



SARANGBAT



TOGETHER  
SARANGBAT

# History of SARANGBAT



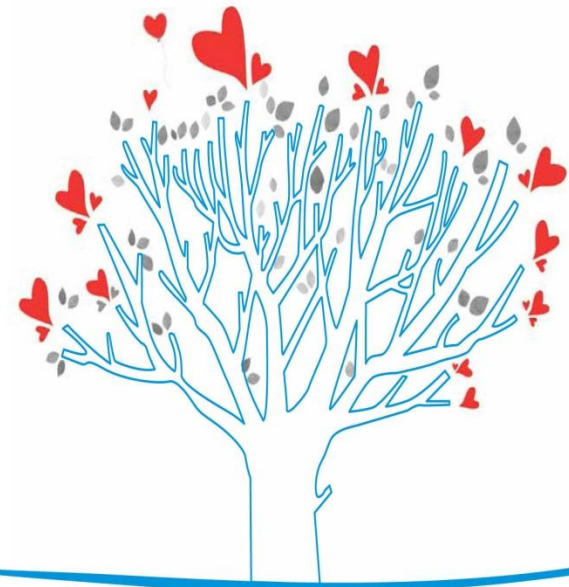
sweet Home Community 26 years



Together Sarangbat 28 years



The founder of Together Sarangbat  
Taeill Kwon



## Sowing Seeds

## Putting down roots

## The Blooming Buds

Sarangbat started providing care for a woman who had serious burns on her body, begging on Chungmu-ro street with her two children in November 1986. We took care of her and created a community for taking care of the homeless elders, the disabled, and orphans. Since then, it has been developed into an international NGO.

- 1995 Relocated 'Happy Home' to Dongyang-dong
- 1997 Opened free-of-charge food service station for the underfed
- 1999 Established 'Together Sarangbat society' office in Seoul

- 1987 Established 'Together Sarangbat'
- 1989 Started 'Happy Home' for homeless community
- 1990 Broadcasted 'Human Era' TV program in MBC
- 1994 Opened 'Happy Home' for unfortunate children
- 1997 Established welfare foundation, NETWORK, and opened free-of-charge food service station
- 2001 Funded Yanbian Hunchun in China
  - Opened 'Happy Home' in Busan
  - Opened 'Silver Home' sanitarium for the elder
- 2004 Entrusted the operation of Ohjung community welfare center
- 2006 Established Wicca Global Education and Culture Center
- 2008 Started Sarangbat Day break Letter
  - Started the project for supporting underdeveloped countries
- 2009 Started supporting 'Audiovisual Project'
- 2011 Opened the nursing care center for the severely disabled in Busolsinae
- 2012 Opened Nasolchae senior center
  - Opened Multicultural Center

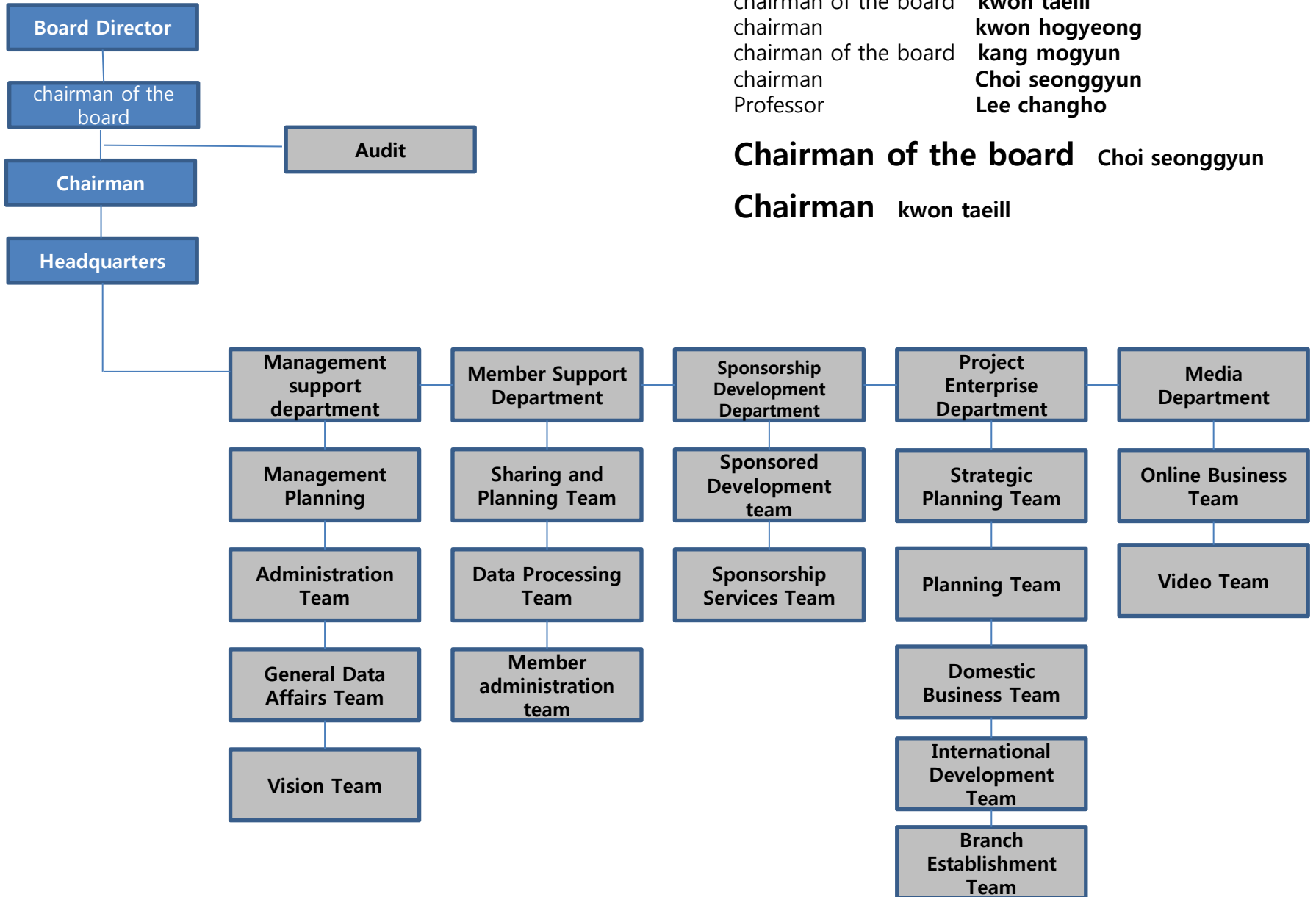
- 1986 Established the home community
- 1987 Opened the SWEET HOME



TOGETHER  
SARANGBAT

The green circles for the CI of 'Together Sarangbat' represent 'the seeds of hope' and the white lines in the heart represent 'the wide field'. This exemplifies the concept of 'Together Sarangbat': to bear the beautiful fruits by sowing the seeds of hope in a wide field.

# Organization



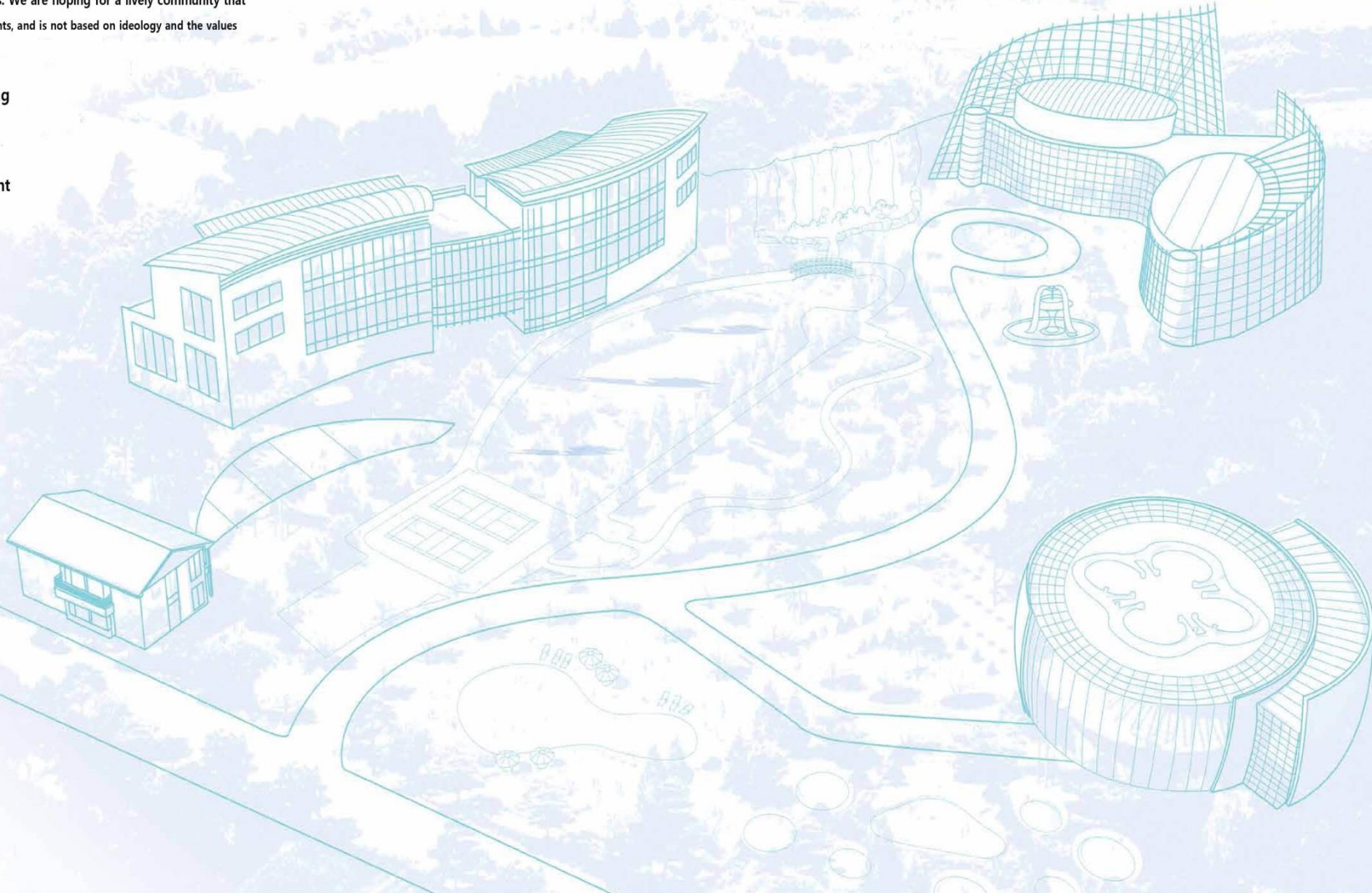
# The community which is working together with the region, Inhwa Village

our vision

Inhwa Village of Love

Inhwa Village, the community of love, is a village of children staying together who suffer and need contributions. We are hoping for a lively community that fulfills the need of its inhabitants, and is not based on ideology and the values of one person.

Natural herbal cultivating  
Etiquette school  
Organic farming  
Greenhouse development



# We humbly would like to participate in genuine volunteer activities

These volunteer activities with 'Together Sarangbat' proceed via the following process: writing a proposal, surveying, volunteer activities, and feedback with partner organizations to provide effective service to the beneficiaries of social welfare needs.



## Business enterprise participation

- Cultivate a Happy Society • DO- Gather Campaign • KIDS CARE BAG • Contribute Book-Bag • Glamping Camp • Autumn Athletic Sport Day for Disable People • Improvement of Living Environment for Activity-Restricted Elderly.
- Happy Box • Yeontan Boiler Replacement Support Project • The Miracle of 2It • Local Kid Center Athletic Festival • Happy Cooking • Baenaet Jeogori Campaign • Briquette Sharing Events
- Environmental Improvement of Local Kid Center • Improvement of Housing Environment for Unwed Mother • Love Hot-Fix T-shirt • Delivering Cookie • Love Song pyeon, Rice Dumpling Sharing Events



**Business Enterprise Participation** Hana financial group created the beautiful village wall painting in Seodaemun district, Hobakgol



## 01 Cultivate a Happy Town

To create hope in a retirement village for the elderly

- Beneficiary** New development for retirement village (Hongeun-dong, Seodaemun-gu, Yeokchon-dong, Eunpyeong-gu, Siheung-dong, Geumcheon-gu)
- Participating companies** KB Bank, Hana Financial Group, Intel Korea
- Progress** Create a flower garden with a beautiful wall painting in every village, Build sitting wooden benches, Provide drinking water in the park.
- Budget** 300 million won
- Benefits** Reconstruct to be the model village.

## 02 DO- GATHER CAMPAIGN

Creating happy society together

- Beneficiary** Family crisis with low income and incurable patient
- Participating companies** NOVARTIS
- Progress** Build assistance platform on Facebook for selected beneficiaries who need help and business support, then selected the amount and aid issues by professional auditors.
- Budget** 24 million won
- Benefits** Find and support beneficiary via social media in order to get out of poverty.

## 03 Local Kid Center Athletic Festival

Heal for physically and mentally! We are unity!

- Beneficiary** Vulnerable Children
- Participating companies** Together with SARANGBAT and Sponsorship
- Progress** Plan and progress activities such as athletic competition program, performances, recreation, group presentations, outing activities.
- Budget** 30 million won
- Benefits** Create enjoyable athletic competition and events for local kids isolated due to low income parents and being orphaned.



**Business Enterprise Participation**



## 04 Happy Cooking

Cooked international food and delivered to welfare facility

**Beneficiary** Children who are staying and using the facilities of local kids' center and orphanage

**Participating companies** APTi, Shinhan Card

**Progress** Make snacks such as tortillas and cookies and deliver to isolated children.

**expectation effectiveness** Secure snacks for kids center without government budget

## 05 Love Hot Pics T-shirt

Donate 'Love Hot-Pics T-shirt' to the isolated children both domestic and abroad

**Beneficiary** Underprivileged children from both domestic and abroad

**Participating companies** KB National Bank, Hana Banak

**Progress** Put on every grain hot-fix on designed paper and stick on t-shirt.

**expectation effectiveness** Donate to participating campaign for children from poor countries.

Produce and provide t-shirt or hooded sweatshirts to welfare facilities and local kids' center, in the case of domestic kids.

## 06 KIDS CARE BAG

Create pouch and put the medicine inside!

**Beneficiary** Slum children from abroad

**Participating companies** KB National Bank, Hana Financial Group

**Progress** Deliver handmade pouch bag with medicine and hygiene supplies

**expectation effectiveness** Contribute to slum children abroad who live in poor hygienic conditions in order to protect them from the disease, care for them and cure them.

## 07 Happy Box

Happy gift set for the neighbors

**Beneficiary** Isolated Children, Parentless Families

**Participating companies** Hana Financial Group

**Progress** Provide school supplies for children and groceries to parentless families.

**expectation effectiveness** Provide customized program developed by support staff, not only provide hierarchically and customized supporting activity stuff.





## 08 Baenaet Jeogori Campaign

Give the love of mother to single mother, low income family, newborn infant from developing countries

**Beneficiary** Single Mothers, Children from Underdeveloped Countries

**Participating companies** Samsung Display

**Progress** Manufacture handmade Baenaet Jeogori (Korean traditional jacket) by DIY and deliver to single mother

**Budget** 220 million won

**expectation effectiveness** Donor participation campaign, Corporate participation program which is transmitted to the domestic single mother as well as the children from developing countries.

## 09 Delivering Cookie

Deliver the nutrition snack to the local kids' center, the children from day care center

**Beneficiary** Local Kids Centers, Day Care Center Facilities and Residential Children

**Participating companies** KB National Bank

**Progress** Pack handmade cookie with milk and deliver to neglected children

**expectation effectiveness** Support snack to the kids' facilities which has limited snack funds similar to local center.

## 10 Contribute Book-Bag

Donate to the abroad slum kids who are going to school with plastic bags.

**Beneficiary** Slum Kids Abroad

**Participating companies** Hana Financial Group, National Bank

**Progress** Support handmade bag containing different school materials.

**expectation effectiveness** Campaign which is raising hopes and dreams by providing school materials to kids who go to school without a school bag or the children who are using charcoal instead of pencil.

### Business Enterprise Participation



# 글램핑 페스티벌 Glamping Festival



## 11 Glamping Camp

2 days one night happy camp with alienated culture kids.

**Beneficiary** Domestic Neglected Kids, Teenager (local kids' center, North Korean Defectors)

**Participating companies** KB National Bank

**Progress** Different programs such as athletic festival, performances, global food experience, barbeque party while camping.

**Budget** 20 million won for each camp

**expectation effectiveness** Increase self-esteem and positive memories for people

## 12 The Miracle of 2 Lt

Deliver the water to island area where there is lack of water

**Beneficiary** The Island Area Where there is no Water Supply Facility

**Participating companies** APTi

**Progress** Delivering 10 thousand water bottles to 18 islands such as Jun-nam Jindo, Webeong island by the volunteers themselves.

**Budget** 8,000,000 won

**expectation effectiveness** Deliver fresh beverage to vulnerable groups with no drinking water source.

## 13 Environmental Improvement of Local Kid

Learning environment OK, concentration up

**Beneficiary** Decrepit Local kids' Center with no Government Budget

**Participating companies** KB National Bank and many companies

**Progress** Ceiling, linoleum change, small facility repair, and LED lamp replacement

**Budget** 90 million won

**expectation effectiveness** Provide comfortable and cozy learning and living environment to children.

### Business Enterprise Participation





## 01 Cultural Child Care Center

Laughing playground for the kids

**Purpose of establishment** Talent training by cultural experiences! Promote strong and healthy upbringing! Provide different cultural experience activities!

**Address** 539-170 Taesaeng-ri, Daeso-myeon, Eumseong-gun, Chungbuk, Korea  
**C.P** 010-7334-5668

## 02 Children Center in Doksan Area

Safety area for children

**Purpose of establishment** To provide the best support for safety! To support a career education physically and mentally! To provide a healthy and balanced life.

**Address** 3rd floor 893-5, Doksan 3 dong, Geumcheon-gu, Seoul city, Korea  
**TEL** 070-8781-3808

## 03 Youth Center

Education center for young adult people to build successes.

**Purpose of establishment** To solve an economic burden for youth! To support young people to settle in a stable job!

**Address** 215-143, Noryangjin-dong, Dongjak-gu, Seoul, Korea  
**TEL** 070-8781-3808

### Facility business management





## 04 Global Cultural Center

The best support for the multicultural family

**Purpose of establishment** To support a stable settlement for multicultural families! To provide different cultural experience awareness!

**Address** 3rd floor hyesung B/D 417-8, Bupyeong-dong, Bupyeong-gu, Incheon Metropolitan City, Korea  
**TEL** 010-7334-5668

## 05 Nasolchae

No. 1 welfare facility for elder of Korea

**Purpose of establishment** To provide a high quality shelter for abandoned elders, managing a cozy, open, and modern welfare facility. To provide family-style care.

**Address** 19, Solgogae-gil, Gyeyang-gu, Incheon Metropolitan City, Korea  
**TEL** 032-515-9120

## 06 Senior Shelter

A cozy shelter for elders

**Purpose of establishment** To increase a senior-cultural level of elders, health, and to provide advanced welfare services.

**Address** 2rd floor ,716-4 Bupyeong-dong, Bupyeong-gu, Incheon Metropolitan City, Korea  
**TEL** 070-7383-5759

### Facility business management



# The world with full of happiness

Make brighter Korea by spreading administrating knowhow and managing fee for facility by networking with social welfare foundations.



## Facility supporting business

- Nurturing Child Facility HAPPY HOME (Incheon, Daejeon, Busan)
- Senior Care Facility in Western Geong-gi
- Busolsinae, severely disable facility
- Silver Home
- Gang-hwa PureunChojang (Enhanced green pastures)
- Ojeong Senior Welfare Facility in Bucheon-si



## 01 Nurturing Child Facility HAPPY HOME

Warm care facility with the parents' love

**Purpose of establishment** To provide care and cure children who were abused and did not receive care from their guardian, and to children who were neglected or orphaned.  
Support educational venue.

**Incheon HAPPY HOME** 898 Gyeonginno, Bupyeong-gu, Incheon Metropolitan City, Korea  
TEL. 051- 632-6361(Nurturing child facility)

**Busan HAPPY HOME** 96 Jinnamno, nam-gu, Busan Metropolitan City, Korea  
TEL. 051-632-6361(community life)

**Dae Jeon HAPPY HOME** 593 Daejongno, jung-gu, Daejeon Metropolitan City, Korea  
TEL. 042-522-1191(community life)

## 02 Busolsinae, severely disable facility

The services of severely disable facility

**Purpose of establishment** To take care of severely disabled people who were abandoned by their guardian.

**Address** 4, dongsanno, nam-gu, incheon Metropolitan City, Korea  
TEL. 032-515-0066 [www.beusol.or.kr](http://www.beusol.or.kr)

## 03 Gang-hwa pureun chojang

Family life community for senior care

**Purpose of establishment** To provide special care to the elderly who require long-term care due to age-related diseases such as dementia, cerebral palsy, and disability.

**Address** 212 inhwari, yangsa-myeon, ganghwa-gu, incheon Metropolitan City, Korea  
TEL. 032-932-8161 [www.강화푸른초장.kr](http://www.강화푸른초장.kr)

Facility supporting business





## 04 Ojeong senior welfare facility in Bucheon city

Lively silver society by sharing love and happiness

**Purpose of establishment** To contribute to a high quality and healthy life for elderly and establish the reflection of elder independently through the systemic and professional humanity services.

**Address** 669, sosa-ro, Ojeong-gu, Bucheon-si, Gyeonggi-do Korea  
**TEL** 032-683-9290 [www.ojsenior.bucheon4u.kr](http://www.ojsenior.bucheon4u.kr)

## 05 Senior care facility in Western Geong-gi

Protect the right of elderly, pathfinder

**Purpose of establishment** To prevent elder abuse, to support to the elderly who were abused until they are recovered and have a healthy, independent life.

**Address** 252, Ojeong-ro, Ojeong-gu, Bucheon-si, Gyeonggi-do Korea  
**TEL** 032-683-1389

## 06 Sliver Home

Elderly nursing home full of happiness

**Purpose of establishment** To provide accommodations and comfort to the elderly who have diseases such as dementia, and cerebral palsy.

**Address** 26-33 Eungbong-gil, Nam-myeon, Inje-gun, Gangwon-do  
**TEL** 033-462-9111 [www.ijsilverhome.or.kr](http://www.ijsilverhome.or.kr)

### Facility supporting business



# Let's create the happy world with "Together Sarangbat"

We send the devoted love to many domestic children who need medical fees and ongoing help.

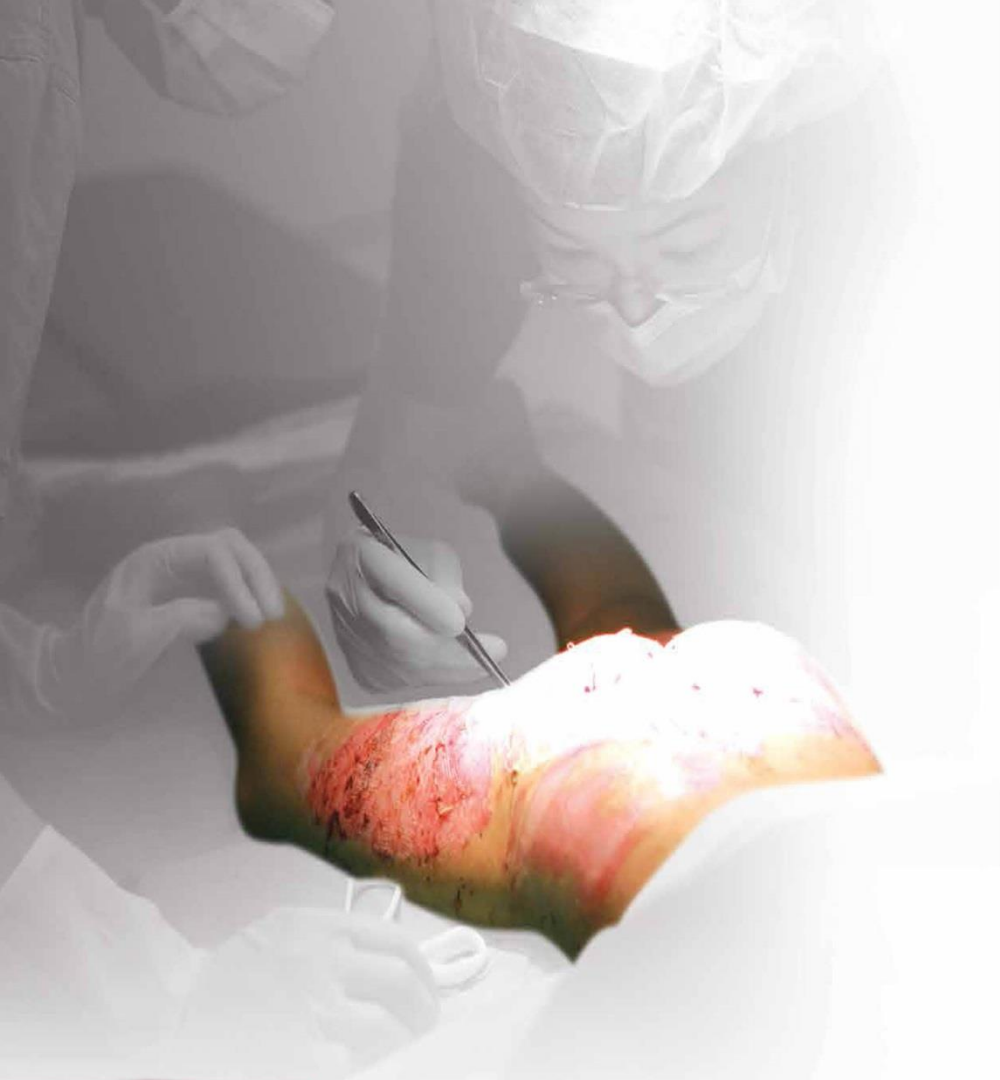


Lee Seok Joon and Chu Sang Mi are participating at the Baenaet Jeogori Campaign for single mothers.

## Domestic supporting business campaign

- Burn-treatment Supporting Business
- Medical Fee Supporting Business for Incurable Diseases
- Self-reliance Supporting Business for Single Mothers
- Supporting Business for Emergency Living





## 01. Burn-treatment supporting business

Giving treatment for burn injury and mental disability

**Purpose of establishment** Support the operation, treatment and living of people who suffer intolerable pain from heat burn.

**Needed support** The average treatment cost of severe burn patient : over 100 million won

**Domestic patient status** Total - 473,000 (under 9 years old 18.8%)

\*sources : 2012 national health insurance services (NHIC)

## 02. Self-reliance supporting business for unwed

Supporting single mothers to get healthy self-reliance

**Purpose of establishment** To help single mothers' self-reliance who decide to raise children instead of adoption, abortion, and abundant. To support children of single mothers until grown up and healthy.

**Needed support** Child rearing coast. education expenditures 63.1%

**Domestic patient status** Total - 26, 034 \*sources : 2010 gender equality

## 03. Medical fee supporting business for incurable

We create the light of hope for family

**Purpose of establishment** To support the family of those with incurable diseases

**Needed support** Monthly average usage - over 800,000 won~1.2 million won

## 04. Supporting business for emergency living

Quick solution for emergency cases

**Purpose of establishment** To solve the emergency of families in crisis with nowhere to go, and supporting them until they can keep their place.

**Needed support** Basic livelihood of pensioners who commit suicide within 4 years - 1,238 people

**Domestic patient status** Total - 1,350,891 people

\*sources : 2013 Ministry of Health and Welfare

Domestic supporting business campaign



# Smile with the whole world



We are making an effort for the total care of global developing countries and their self-reliance.



Actress Gyuri Kim with Mab Gwa Wal in Kongo region in Cambodia

## Global supporting business

- Sponsorship Services for Children Abroad
- Supporting Business of Health and Medical Treatment
- Educational Supporting Business
- Antipoverty Business



# 01. Sponsorship Services for Children

Support total care such as basic livelihood, education and medical care by providing sponsors for children abroad living in disease and poverty. We provide educational opportunities to reduce poverty and save their lives.

### Process steps

Alliance application	Connection with allied kid	Children receipt card	Child care
	Sponsor Connection with allied kid	Send the children card	Annual report: once a year

# 02. Supporting Business of Health and Medical Treatment

There are our neighbors who could not get medical care and died without even one pill of medicine. We implement the supporting business for everyone to be able to get health care immediately, leading to a healthy life.

### Medical business for burn patient

- Brushfires become horrible accidents in inadequate environment.
- The people who were suffer from fire where it is difficult to get basic treatment are neglected and can even die.
- Supporting and administrating ongoing, regular, local medical services for those people.

### Delivering medical supply

- Deliver medicine for prevention and treatment to those who were threaten for life.
- Deliver needed medical supplies such as fever reducer, antiseptic, antibiotic and so on.

### Malaria prevention and awareness

- Support insecticide, mosquito nets and preventative medicine for prevention of malaria.
- 665,000 people died from malaria in a year.
- Insecticide, mosquito nets and preventative medicine support campaign

### Hospital construction project in developing countries

We implement hospital construction project in developing countries for those people who could not receive initial treatment due to the lack of basic medical facilities or those who died without knowing they had a disease.

Global supporting business





Global supporting business



### 03. Educational supporting business

The most effective way to stop poverty is 'education'. We implement the educational support business for children from developing countries to rid the flow of poverty and get hope.

#### Kindergarten support

- We support children to achieve proper education during their childhood.
- We educate children to be able to write and read their mother language.
- We support education supplies such as desks, chairs and school materials.

#### Book supply for kids abroad

- We produce story books translated into their mother language and send to countries with low book distribution rate.
- Provide story books, fairy tales, study books, history books and so on.
- Supporting underserved region, remote areas where it is difficult to get books.

#### Study room support

We support a place for children who cannot go to school.

### 04. Antipoverty business

There are 1.2 billion starving people who could not get a proper meal in a day.

We support food and supplies for them to forget their hunger and to maintain basic living via systemic support.

#### Food support

There are many children who die from starvation and cannot get protection in serious poverty.

- 1/3 of children under 5 years die due to malnutrition.
- 1 in 9 African children under 5 years dies from diseases caused by malnutrition.

#### School meal business

We provide meals for school children in order to encourage more children to come to school and emphasize proper nutrition.

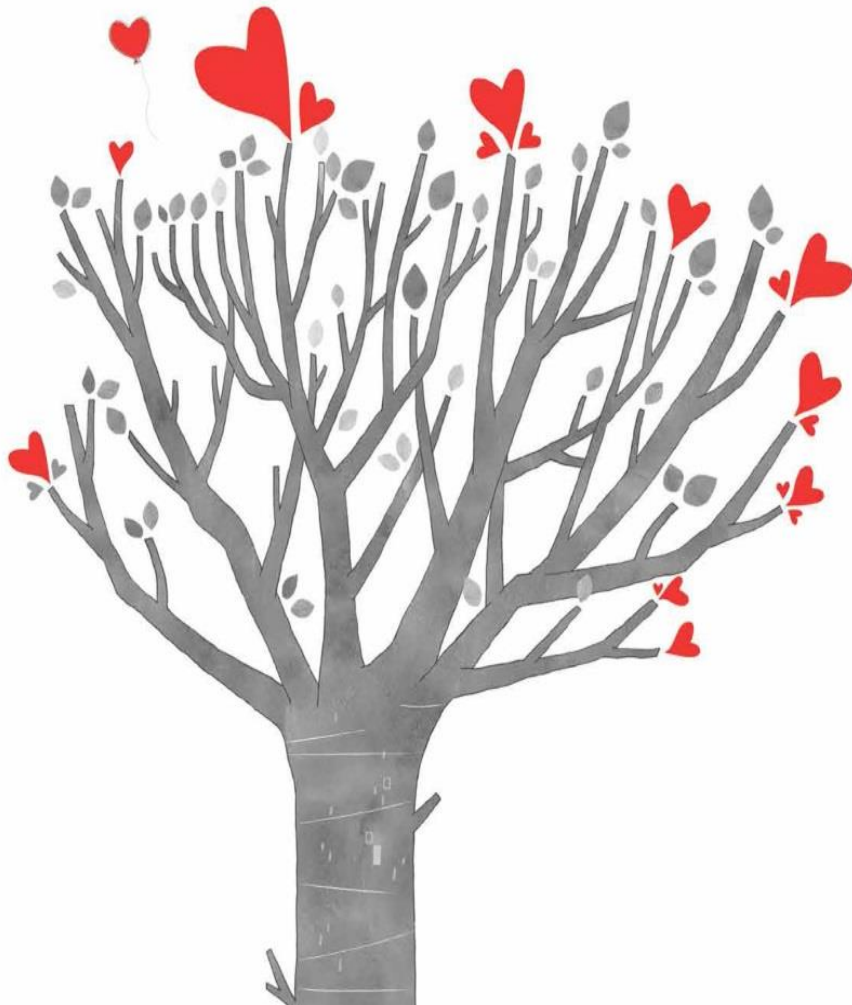
#### Shoes support

There are African children who are walking around with bare foot and are exposed to infectious diseases caused by wounds in their feet.

- Children who live with bare feet get parasitic sand flea in their food those taking nutrition and can threaten their life.
- Deliver public workshop educating about Elephantiasis.

We create educational places for people from developing countries by teaching techniques to become self-reliant.

# Your donation is clearly operated with goodness and honesty



We, "Together Sarangbat", which has been established in 1986 are continuously doing our best for those people who are suffered in domestic and abroad.

## Donation income in 2014 25,553,000,000 won

Membership fee	15,084,000,000 won (59.1%)
General donation	1,766,000,000 won (6.9%)
Events donation	726,000,000 won (2.8%)
Sponsorship donation	365,000,000 won (1.4%)
Other donations	5,594,000,000 won (21.9%)
Carryover from last	2,018,000,000 won (7.9%)

## Donation expense in 2014 25,553,000,000 won

Corporation and facility support	11,920,000,000 won (46.7%)
Fund-raising business	1,281,000,000 won (5%)
Planning and public event business	2,453,000,000 won (9.6%)
Sponsorship and aid support	1,087,000,000 won (4.3%)
Labor and operating cost	3,593,000,000 won (14.1%)
Carried forward	1,926,000,000 won (7.5%)
Designated business expenses	3,293,000,000 won (12.8%)

# Year 2013 budget

Income		Expense	
Subjects	Amount	Subject	Amount
Dues	14,242,251,000	Labor cost and operating expense	3,718,805,513
Offertory	80,000,000	Business expense	11,460,382,000
Donation	1,524,100,000	Property composition	3,450,000,000
Miscellaneous	18,500,000	Saving	1,500,000,000
Balance carry-over	4,708,543,848	Balance carry-over	444,207,335
balance	20,573,394,848	balance	20,573,394,848

# Year 2013 balance closing

Income		Expense	
Subjects	Amount	Subject	Amount
Dues	14,095,009,386	Labor cost and operating expense	2,796,663,509
Offertory	66,371,124	Business expense	10,896,136,128
Donation	2,847,200,318	Property composition	85,585,477
Miscellaneous	79,541,560	Other business expense	6,000,256,011
Balance carry-over	4,708,543,848	Balance carry-over	2,018,025,111
balance	21,796,666,236	balance	21,796,666,236

# Year 2014 budget

Income		Expense	
Subjects	Amount	Subject	Amount
Dues	14,859,700,000	Labor cost and operating expense	3,702,489,802
Offertory	70,000,000	Business expense	11,573,070
Donation	1,880,500,000	Property composition	4,450,000,000
Miscellaneous	6,006,947,932	Saving	180,000,000
Balance carry-over	2,018,025,111	Balance carry-over	4,929,613,241
balance	24,835,173,043	balance	24,835,173,043



# Year 2014 balance closing

Income		Expense	
Subjects	Amount	Subject	Amount
Dues	15,083,651,556	Labor cost and operating expense	3,511,375,568
Offertory	53,089,000	Business expense	12,872,454,277
Donation	2,919,453,062	Property composition	81,342,700
Miscellaneous	116,983,876	Other business expense	1,800,000,000
Balance carry-over	2,018,025,111	Balance carry-over	1,926,030,060
balance	20,191,202,605	balance	20,191,202,605

# Year 2015 budget

Income		Expense	
Subjects	Amount	Subject	Amount
Dues	15,568,685,000	Labor cost and operating expense	4,907,288,259
Offertory	54,000,000	Business expense	17,257,141,000
Donation	3,110,500,000	Property composition	3,480,000,000
Miscellaneous	6,083,000,000	Saving	80,000,000
Balance carry-over	1,926,030,060	Balance carry-over	1,017,785,801
balance	26,742,215,060	balance	26,742,215,060