



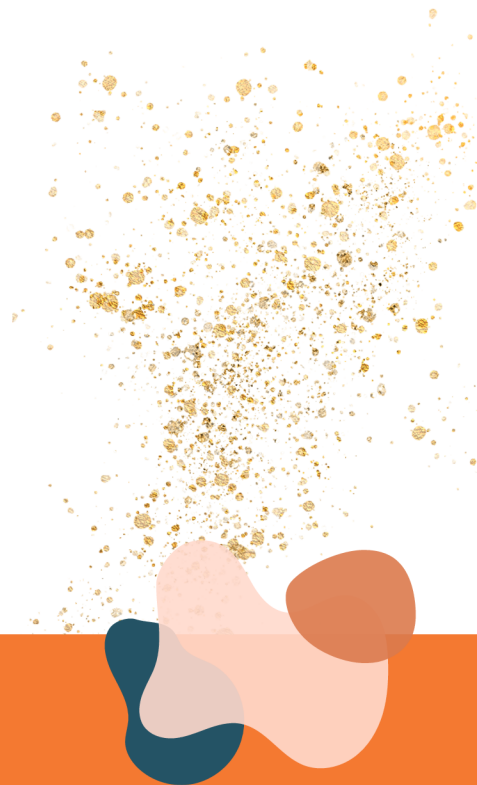
Unveiling Potential: Manish's Journey Towards Independence and Creativity

Born into a family rich in love but challenged by circumstances, Manish's early years were marked by isolation due to deafblindness, diagnosed at three months old. Raised by his grandparents in Faridabad, Manish lacked exposure to the outside world and meaningful engagement, which left him withdrawn. Despite his father's dedication as an auto driver, providing the specialized care Manish required was beyond the family's means.

Manish's family was introduced to services for persons with deafblindness and multiple disabilities, run by Sense International India partner in Faridabad. This connection marked the beginning of a transformative journey. Special educator Mrs. Karuna took Manish under her guidance, providing tailored interventions to address his needs.

Manish's story evolved into one of resilience and achievement through systematic interventions:

Communication Development: Through focused training, Manish began expressing his needs via gestures, transforming his interactions and reducing his isolation.



Vocational Training: Manish discovered joy in creative activities like diya painting and envelope making, fostering his artistic abilities and providing practical skills for the future.

Daily Living Skills: Training in essential tasks enabled him to gain confidence in managing day-to-day activities independently.

Mobility Skills: Navigation training empowered Manish to move around confidently, a significant step toward independence.

Manish emerged as a vibrant young adult with a passion for creative expression. His joy in coloring and crafting reflected his progress and newfound confidence. While some tasks didn't captivate him, his dedication to artistic endeavors shone through. His family's involvement deepened, particularly his father's pride in Manish's blossoming talent and independence.

Manish Kumar's journey is a powerful testament to the transformative impact of targeted interventions and family support. From a reserved child limited by his disabilities to a creative and determined individual, his progress underscores the importance of holistic support for individuals with deafblindness.

Thanks to Global Giving and the supporters for being part of this transformation and bringing light to those living in darkness. **Together, we can continue to transform lives and empower more people like Manish to reach their full potential!**

SENSE INTERNATIONAL INDIA

2nd Floor, Administrative Block, Andhjan Mandal Campus Opp. IIM, Vastrapur, Ahmedabad- 380015
Phone: +91-79-26301282 | E-mail: info@senseintindia.org