



15
mothers2mothers®
YEARS

Raising
the future.®

There is virtually **no reason** why **any baby has to be infected with HIV** or **any family has to lose a mother because of AIDS.**

Yet in sub-Saharan Africa...

Hundreds of babies are infected with HIV each day

AIDS is the leading cause of maternal death

WHY aren't more mothers accessing lifesaving medical care for themselves, their children, and families?



A severe shortage of doctors and nurses



A lack of knowledge about HIV/AIDS



HIV-related stigma and discrimination



Adolescents face significant barriers to accessing services and remaining in care

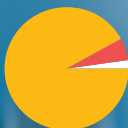
HOW is mothers2mothers making a difference?

mothers2mothers (m2m) is an Africa-based, global not-for-profit organisation that trains, employs, and empowers local HIV-positive mothers as Mentor Mothers, frontline healthcare workers based in understaffed health clinics and communities.

Mentor Mothers' intimate understanding of the social and cultural challenges of living with HIV gives them a unique ability to form trusted relationships with other women and their families, vital to helping them overcome their fears and make lifesaving decisions. Mentor Mothers are professionalised, employed, and economically empowered, fighting stigma and discrimination by example.

90%

of our funding
**provides
health and
hope to
mothers, their
babies, and
families.**



8% Fundraising

2% Management and General



Our Impact



Reduce number of infants infected with HIV



Improve health outcomes of mothers and infants



Save money that would have been spent on treatment

m2m's 2015 annual evaluation shows that our programme has **virtually eliminated*** mother-to-child transmission of HIV among our clients with a **transmission rate of 2.1%**.

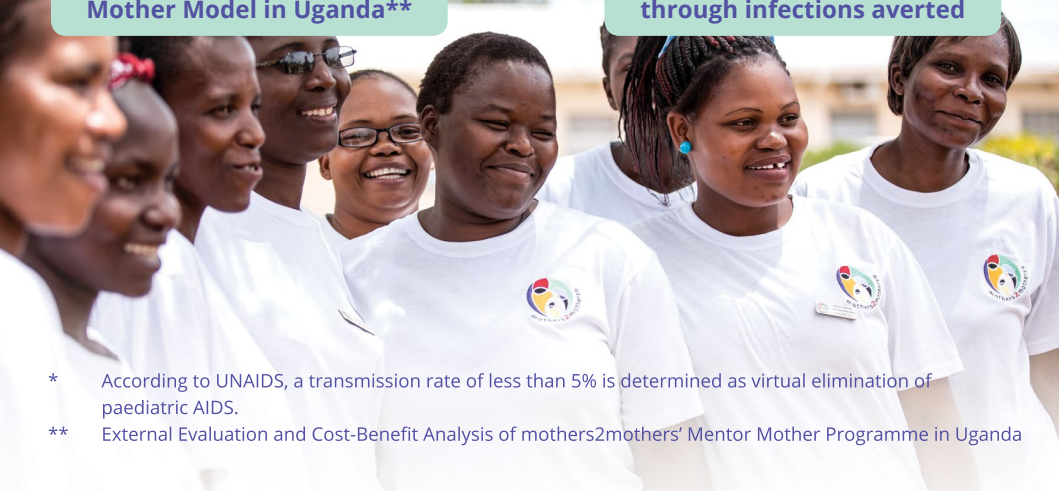
\$1

spent on m2m's Mentor Mother Model in Uganda**

=

\$11.40

in savings of treatment costs through infections averted



* According to UNAIDS, a transmission rate of less than 5% is determined as virtual elimination of paediatric AIDS.

** External Evaluation and Cost-Benefit Analysis of mothers2mothers' Mentor Mother Programme in Uganda

Phumela, a m2m Mentor Mother in Swaziland, tested HIV positive when she was 17 years old and pregnant.

In Swaziland, they still see HIV as this monster, you know. When you have it, you are a nobody. The Mentor Mothers educated me about life with HIV and how to protect my child. I was able to talk to people who really understood my pain, people who knew exactly what it felt like to be unsure of your future.

I like being a Mentor Mother. I inspire other mothers that there is life after HIV. We Mentor Mothers give information that some mothers don't get to know. But they come to us and we tell them our stories and what we know about HIV. We are the example of people who are living with HIV, who are taking medication, who have hope even after HIV.

I'm not afraid of HIV because I feel like I am stronger than HIV.



Our Reach

Since our founding at one Cape Town hospital in 2001, m2m has reached nearly **1.5 million HIV-positive mothers in nine African countries**. In 2015*...



One in four HIV-positive women delivering their infants in countries with a m2m presence received education and support from a Mentor Mother.**



m2m reached **860,500** women, infants, children, adolescents, and men, a **35% increase** from 2014 due to our facility-to-community approach that links women and family members in communities to health centres.**



103,600 HIV-exposed infants and **176,300 adolescent girls and young women** benefited from the m2m Mentor Mother Model.**

m2m currently operates in:

1 ---- **South Africa**

2 ---- **Lesotho**

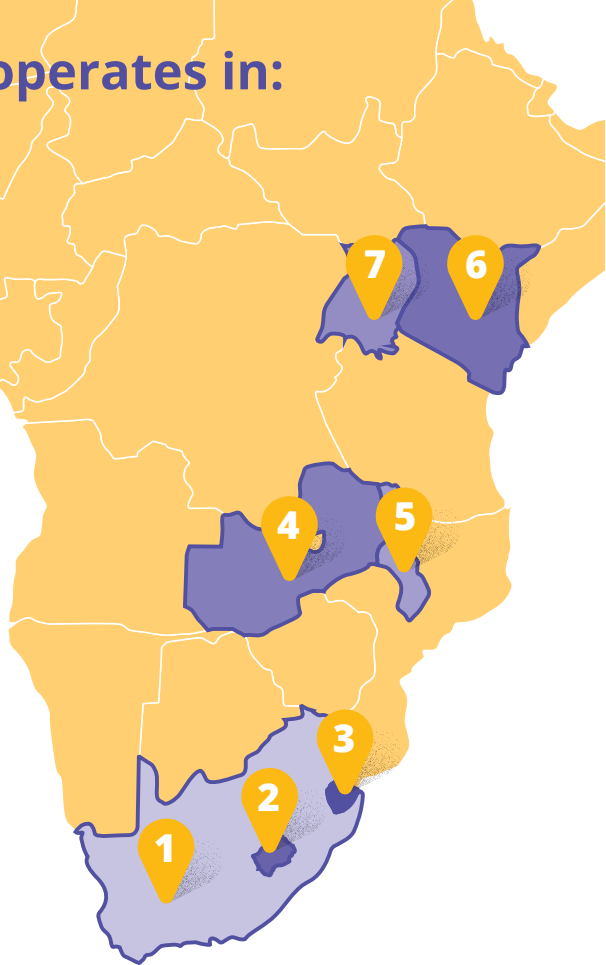
3 ---- **Swaziland**

4 ---- **Zambia**

5 ---- **Malawi**

6 ---- **Kenya**

7 ---- **Uganda**



* mothers2mothers 2015 Internal Evaluation

** m2m direct services and services provided by implementing partners; national comparisons from estimates published in UNAIDS 2015 Progress Report on the Global Plan

Health For All Generations

Paediatric AIDS will only be eliminated when children grow up healthy and reach reproductive age with the skills and knowledge necessary to make the right choices to protect the next generation from HIV. That is why m2m's family-centred approach extends well beyond pregnancy, birth, and a child's early years. Our services include:

Prevention of Mother-to-Child Transmission (PMTCT) | HIV Care and Treatment:

Mentor Mothers promote uptake of services, retain HIV-positive women in care, and improve adherence to treatment. They provide essential health education and peer support to women and their male partners in health facilities, households, and communities.

Reproductive, Maternal, Newborn, Child Health (RMNCH):

The trusted relationships between Mentor Mothers and their clients make them uniquely effective in providing essential RMNCH services critical to them and their families, including linkages to care and referrals for family planning, cervical cancer screening, child immunisation, gender-based violence support, neonatal male circumcision, malaria, nutrition, and TB.

Early Childhood Development (ECD):

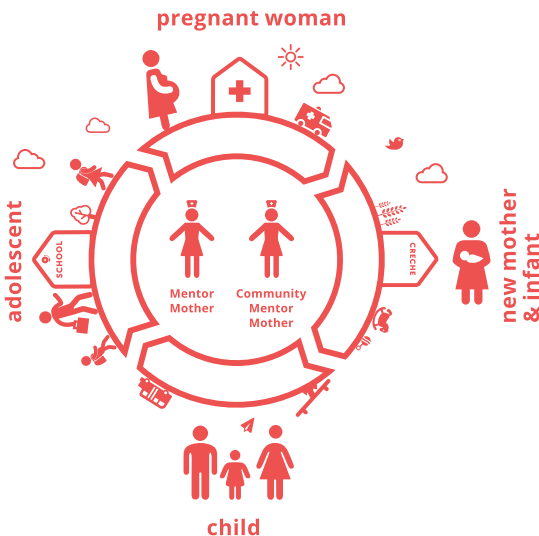
Specially trained Mentor Mothers provide an essential package of ECD services to children and their parents or caregivers at their homes or within health facilities. This intensive intervention is designed to improve children's cognitive, social, emotional, motor and language development, and physical growth.

Paediatric Case Finding and Support:

Using a family-centred approach, Mentor Mothers are trained to identify HIV-positive and HIV-exposed children at health facilities and in communities, link them to care and treatment, and deliver ongoing follow up and adherence support to the children and their families.

Adolescent Health and Positive Youth Development:

m2m provides age-appropriate, sensitive, and empathetic support to adolescents in safe and confidential environments, promoting access to sexual and reproductive health services, building their skills and competencies, and fostering healthy relationships and greater resiliency through role modeling and involving youth in decision making.



HQ: mothers2mothers South Africa

Frank Beadle de Palomo
President and Chief Executive Officer

33 Martin Hammerschlag Way
5th Floor, Foreshore
Cape Town, South Africa
8001

office: +27 (0)21 466 9160

contact: info@m2m.org

North America: mothers2mothers U.S.

Robin Allinson Smalley
Co-founder and Director, m2m U.S.

Los Angeles, CA:

7441 W. Sunset Blvd., Suite 205
Los Angeles, CA 90046
United States

office: +1 323 969 0445

contact: us@m2m.org

Washington, DC:

1634 Eye Street, NW, Suite 300
Washington, DC 20006
United States

office: +1 202 467 1746

contact: us@m2m.org

Europe: mothers2mothers U.K.

Emma France
Director, m2m Europe

St Mark's Studios
14 Chillingworth Road
Islington, London
United Kingdom
N7 8QJ

office: +44 (0) 203 867 7120

contact: europe@m2m.org

May 2017



**m2m has reached nearly
1.5 million HIV-positive
mothers. Please help us
reach 1.5 million more.**

www.m2m.org

  @mothers2mothers

 @m2mtweets