





Its 'Energy Dark Side' shows true cost of our current choices and predicted storm surges and impacts on infrastructure



Energy Dark Sides: True Costs & Predictions

You Have the Power!

What's your dream for the future - the Baked Apple or a healthy, beautiful city?

By exposing current and predicted energy-related problems on this map, our aim is to create awareness and positive action for our common future.

Even though NYC is known as the USA's most energy efficient city, we are paying a very high cost for our current power choices:

- the highest asthma rate in the country
- fossil fuel dependency, resulting in debt, unhealthiness and injustice
- the insecurity of being unprepared for the future
- the changing climate - the impacts of global warming are just dawning on us

Climate Change Predictions

What happens to our city's 530 miles of shoreline if the ocean water levels rise as Columbia Earth Institute's "Climate Change and a Global City" report (Vivien Gornitz, 2001 earth.columbia.edu) predicted? Without surge barriers, areas impacted by a 10 foot flood are shown in grey. Accelerated by the emission of carbon dioxide (CO₂) and other greenhouse gases from cars, buildings, farms, landfills, etc., ancient glaciers and the North Pole are melting, pouring fresh water into the oceans. New York could lose its storm surge buffers, vital infrastructure (water treatment and subway stations, airports, bridges) and biodiversity at the same time. Your energy-smart actions today can help prevent this prediction from becoming reality.

Is NYC prepared?

Our fuelish choices are impacting everything - 2005's weather extremes including Hurricane Katrina, summer's record drought in the Midwest and Europe,

Wake Up Calls

- Climate Change Predictions
- Potential Infrastructure Impact Sites
- Traffic Hazard Zones
- Diesel Pollution Hot Spots
- Power Generation Sites
- Ecological Restoration Sites



50% of NYC's air pollution (and 80% of inhaled cancer-causing substances) comes from vehicle emissions, and the increase in heavier, less efficient autos and especially wide SUVs is costly to all. NYC has new pollution laws for garbage trucks, taxis, construction equipment, and buses. Studies show auto emissions will be reduced through congestion pricing (midtown tolls - see RPA.org). Nationally, 20% of CO₂ comes

ed.org 212-505-2100. Check air quality epa.gov/airnow and toxic emissions at scorecard.org.

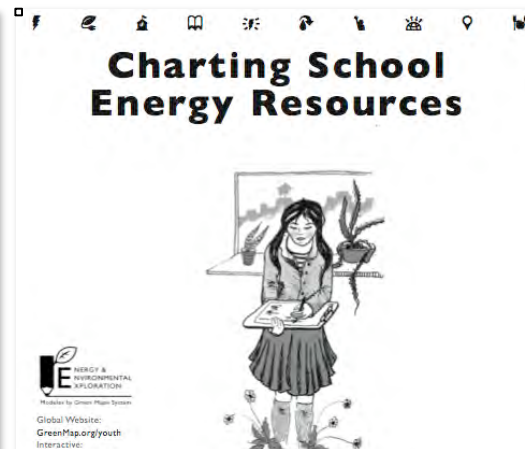
Peak Oil is the point at which oil extraction declines worldwide. Some experts say we're peaking now. North America's natural gas is in decline, too. Costs are soaring! Are we adapting to using less fossil fuel? See oilawareness.meetup.com/36/, PeakOilNYC.org or EnergyBulletin.net.

Nuclear power plants are controversial - true, they create no CO₂, but their radioactive waste is an unsolved safety risk for current and future generations. NYC's closest power plant, Indian Point, is a major security risk, too. Cities, counties and Congress members want it closed - learn more at riverkeeper.org

There is no national security without environmental

Charting asthma, air quality, accidents, injustice and other impacts, along with climate projections from Columbia's Earth Institute





- City Farmer
- Food Coop / CSA
- Greenmarket Staff
- Specialty Producer
- Beekeeper
- Healthy Café Chef or Staff
- Caterer
- Cookbook Author
- Organic Campaigner
- Food Bank Operator
- Nutritionist



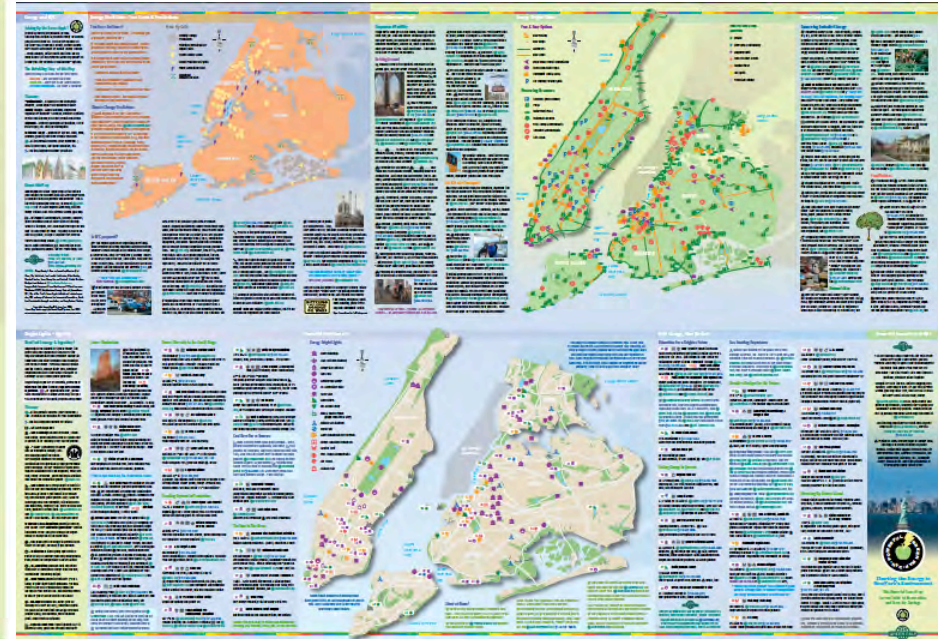
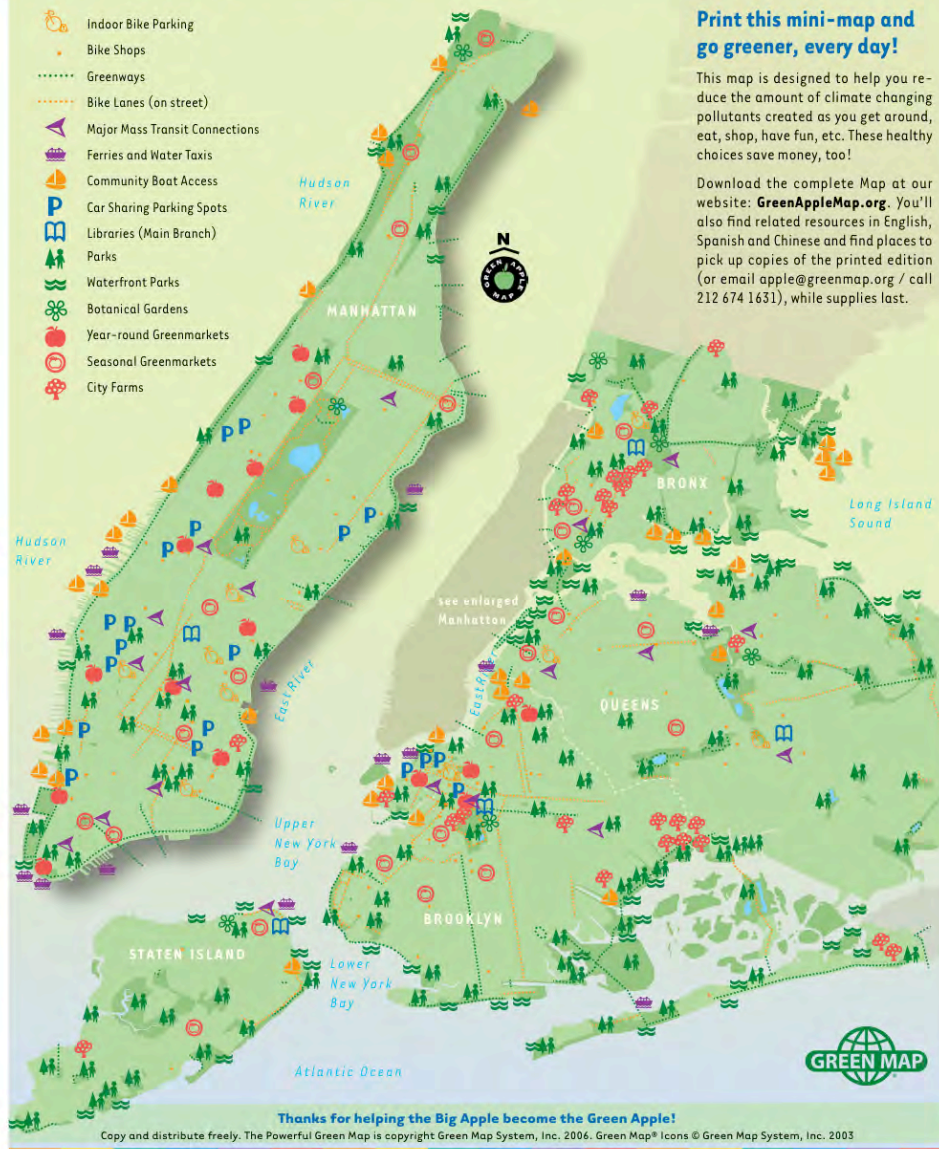
Brooklyn Grange
Rooftop Farm



We also re-purposed the print map to impact more people, with print on demand posters, 'hot linked' PDFs and more



Powerful Green Map of NYC: Every Day & Easy Energy Saving Green Resources



zipcar.com 866-4-ZIPCAR. Carpooling is another great way to reduce impacts and avoid creeping along in isolation – find one through 1-866-NY-COMMUTE or carpoolworld.com. Combine your errands to reduce frustration and congestion.



Brighter Lighting – most traffic crosswalk and signals now use super efficient LED lighting. Soon to be everywhere, spot LEDs in exit signs, bike lights today. Find solar panels on new parking meters, emergency phones and road-work signs.

This map's data became part of our interactive map about renewables, conservation and climate OpenGreenMap.org/NYCEnergy



Download PDF

open GREEN MAP NYC Energy

Generating a brighter future after Sandy United States

View Map About Join Map Team Suggest a site

Map Satellite Hybrid Terrain

Legend Info Search

GREEN MAP NYC

View: Mapmaker Profile
View: Map Website
Download: Map

Energy is on the map!
Renewables, efficiency, embodied energy, LEED buildings, buying local, reuse, climate changed shoreline (purple), solar empowerment zone (red) and more. Suggest new sites as you discover them.

Begun Jun 2011
Updated: 2 days ago

Outcomes
Number of sites: 640
Team members: 6
Comments: 9
[more](#)

Add to this Green Map
[suggest a site](#) | [join team](#)

Map data © 2013 Google - Terms of Use

Email this Green Map

We share our **mapping platform** with local Green Mapmakers in 40 countries. Every site is open to public viewpoints, images, etc



open GREEN MAP **SITE FEATURES**

Union Square Greenmarket 17th St & Broadway
New York, NY
212-788-7900

Overview Comments (4) Connections Multimedia Impacts

Come shop for local and organic produce at one of the biggest, year-round greenmarkets in NYC.

Shop local at the Greenmarket to keep NYC and its bioregion green. By shopping here, you will also be eating seasonally and reducing the impacts of transporting produce to your table. You will be supporting small family farmers as you experience the season's change and enjoy the scent of herbs and locally-grown flowers, too!

<http://GrowNYC.org>

★ ★ ★ ★ ★

4 comments

NYC's Green Apple Map
added 09/2009 by Green Apple Mapmakers

ICONS

Rollover each Green Map Icon to learn about sustainability

SOCIAL INCLUSION

Site accessibility indicators for children, disabled, public transit, free, and more.

CONNECTIONS

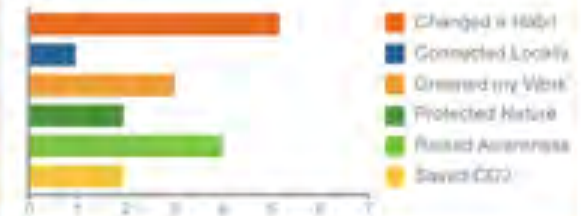
Compare this site to others for inspiration and learning

MULTIMEDIA

Share images, videos, PDFs, podcasts about each site.

IMPACTS

See how this site has changed people and the community.



All Green Maps share an icon set that highlights assets as well as what is at risk or already impacted – get posters at [GreenMap.org/icons](https://www.greenmap.org/icons)



Climate Changed



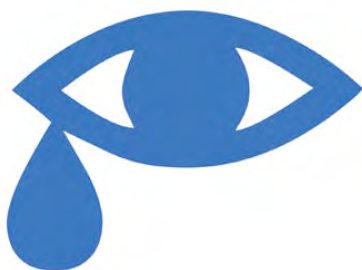
Vulnerable Site



Disaster Area



Habitat at Risk



Blight Site



Abandoned



Contaminated



Greenhouse Gas
Reduction

Our newest mapmaking tool: Mobile Site Collector makes it easy to chart sites as you visit them, in 13 languages!



Site Collector

At a green place?
Put it on the Green Map!

Coletor date pentru Harta Verde

Ai observat un loc verde?
Pune-l pe Harta Verde!

地点收集器

你在绿色场所吗?
把它加到绿地图上!

Coleccionista de sitios

Está en un lugar verde?
Póngalo en el mapa!

景點提報小幫手

發現綠色景點?
把它加到綠色生活地圖!

Site de Collection

At a green place?
Ajouter à la Carte Verte!

サイトコレクター

もしかして、今グリーンな場所にいますか?
グリーンマップにのせましょう!!!

Standortsammler

An einem grünem Ort?
Platziere es auf einer Green Map!

موقع جامع

في مكان أخضر?
القرج على الخريطة الخضراء Green Map

Coletor de Locais

Você está em um local Verde?
Coloque-o no Mapa Verde!

אוסף האתרים

במקום ירוק?
סימל אותו על המפה!

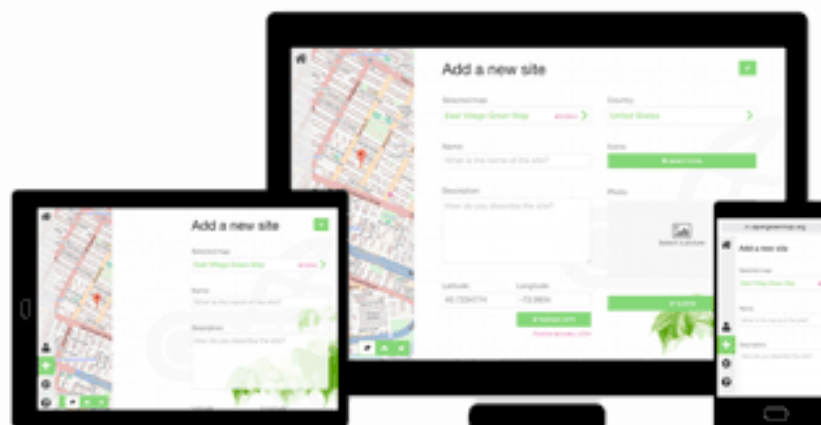
Platssamlare

Är du vid en grön plats?
Placera den på GreenMap!

장소 모으기

녹색 장소에 계신가요?
그린맵에 장소를 등록하세요!

map it FAST on all devices



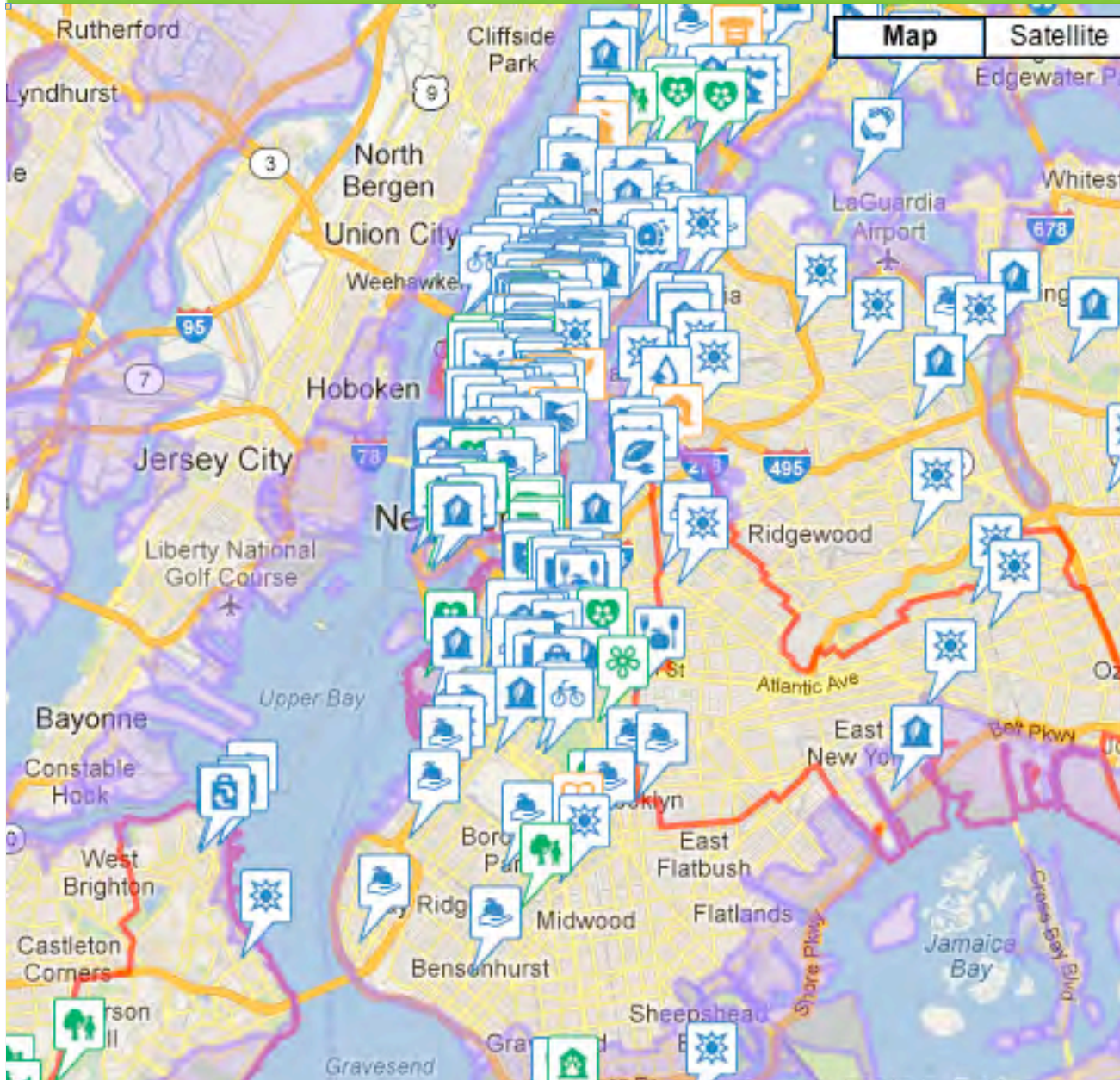
M.OpenGreenMap.org



United Nations Workshop 7/2014



Back to NYC: after Superstorm Sandy in Fall 2012, we added the flood's highwater mark across the city and region



Solar Empowerment Zones in Red.

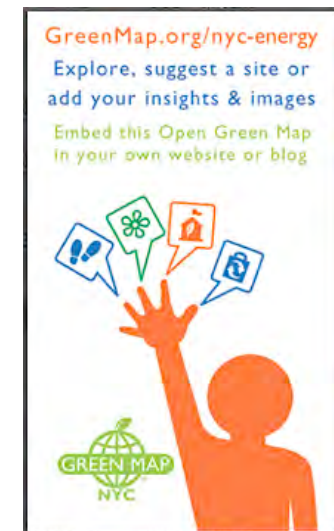
Purple is Sandy's extent.

Toggle sites and lines in map legend

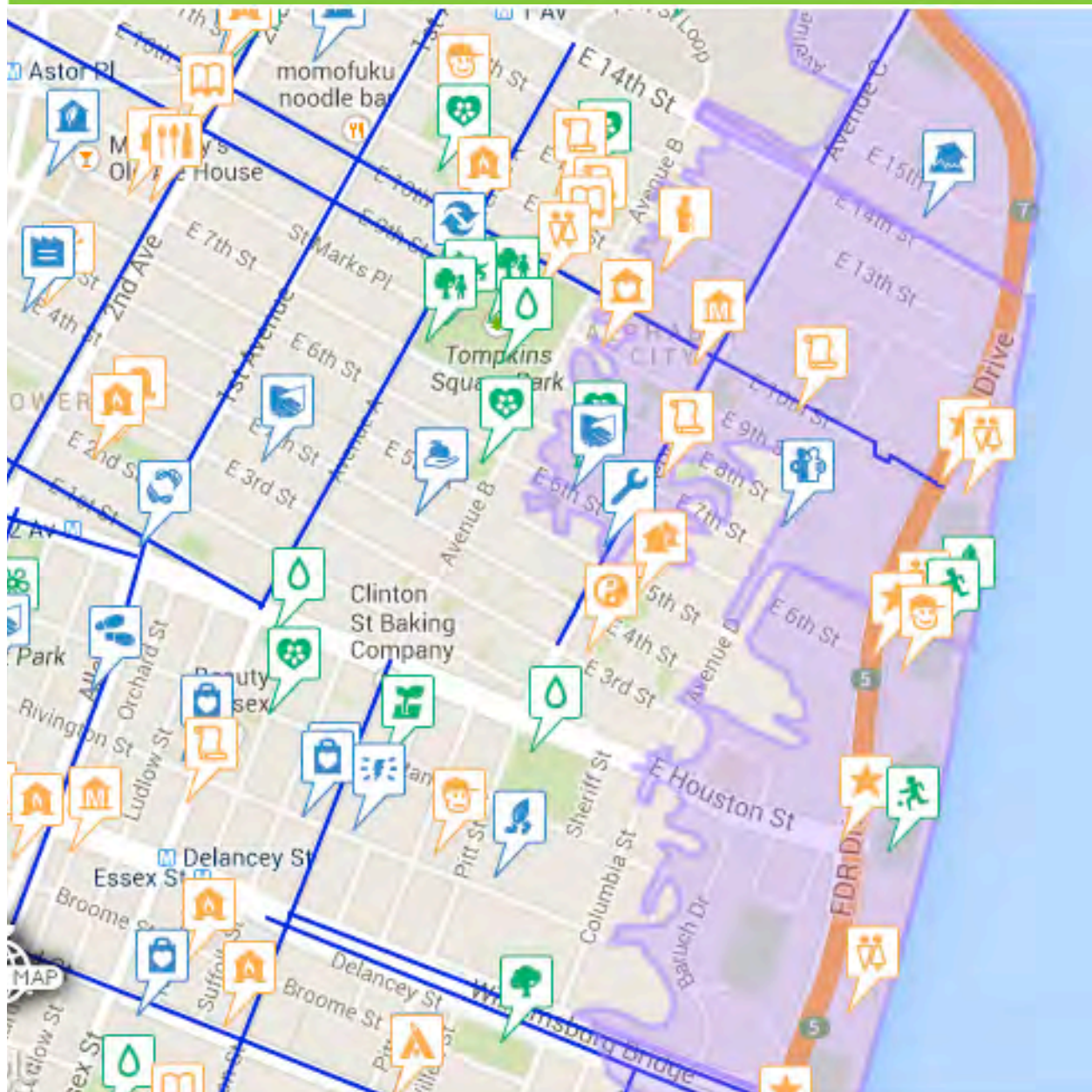
embed this map

in your
website or blog – see:

GreenMap.org/nyc-energy



Our Adapting to Change cycling & walking tours reveal issues & opportunities in impacted Lower East Side areas



Our Sandy history blog:
bit.ly/sandy12

Add sites to this map!
Explore on our website or at
Facebook.com/lower.east.ride



Our Green Maps, tours and mapmaking tools leverage change by sharing knowledge, awareness and experiences



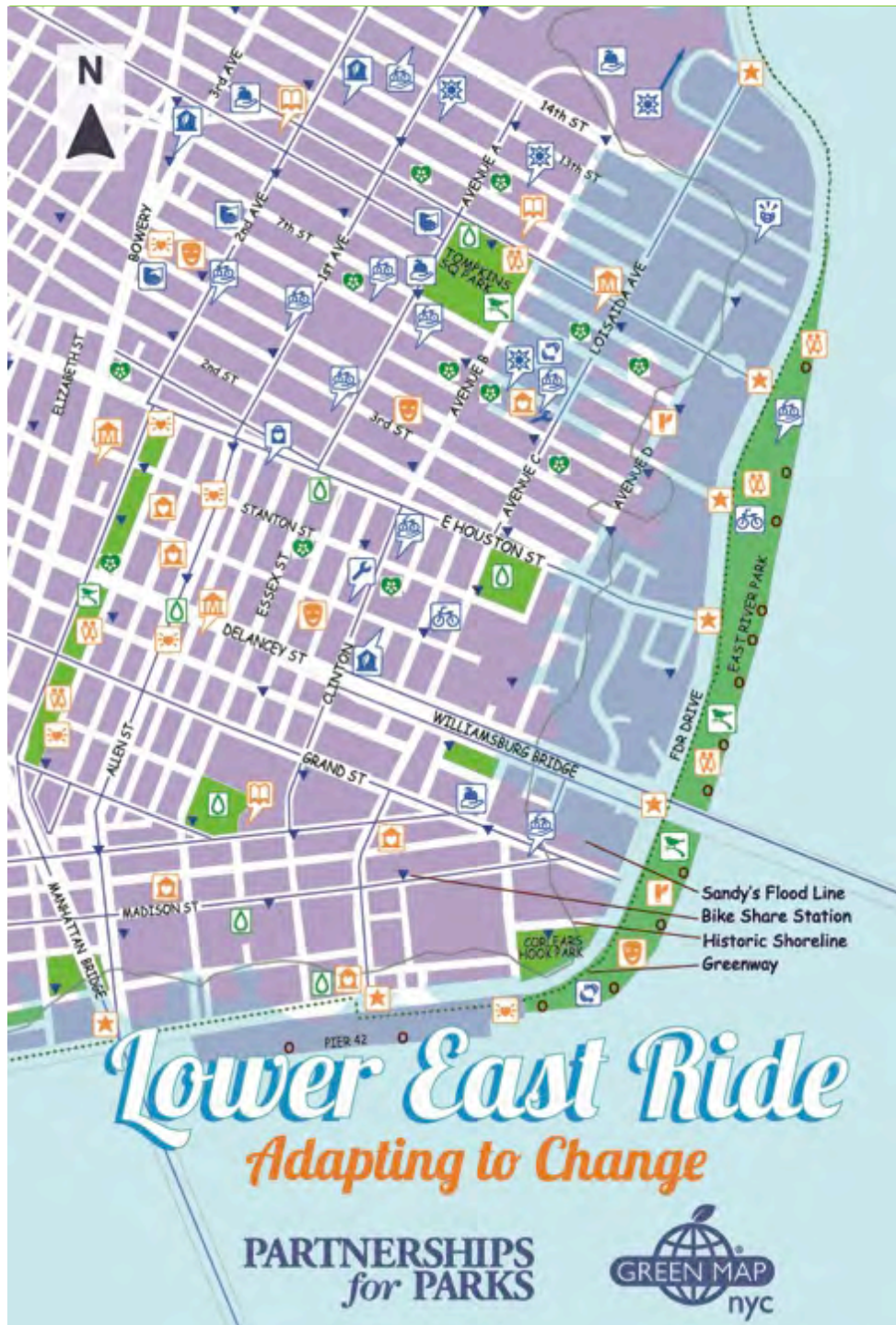
Municipal Art Society –
Road to Resilience Tour



'Adapting to Change' Lower East Side Cycling Tour #4 This Sunday

If you missed an earlier version of this ride (recapped in Boogie here), you have another chance this Sunday. The Adapting to Change Cycling Tour #4 will meet at 11:30 a.m. at the Gaia Tree in the center circle at [...]





Tri-lingual print editions



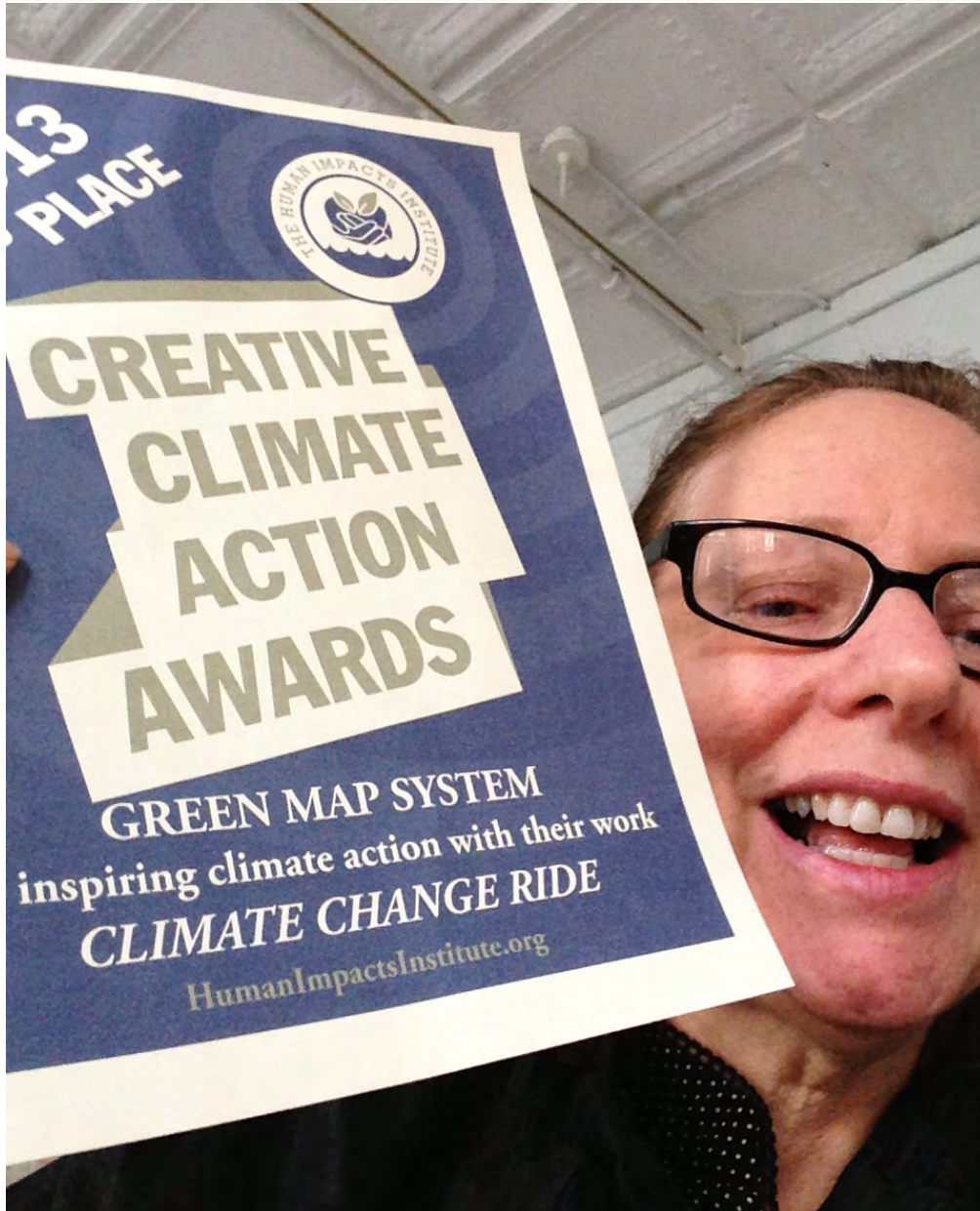
Spring 2013: Lower East Ride Green Map published as postcard and poster maps in Chinese, Spanish and English.



Created with Partnerships for Parks, this map links impacts to community resilience sites, including 45 new Bike Share stations.

Download at [Facebook.com/lower.east.ride](https://www.facebook.com/lower.east.ride)

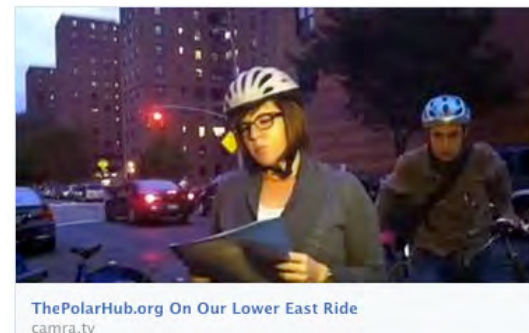
The project continues to draw attention as we model its elements to benefit more NYC communities & global partners



Our NYC Climate Week Cycling Tour and maps received 2012 and 2013

Human Impacts Institute
Creative Climate Action Awards

To extend the community building value, we made a how to video for Green Map cycling tours – see it in English at bit.ly/howtourGM



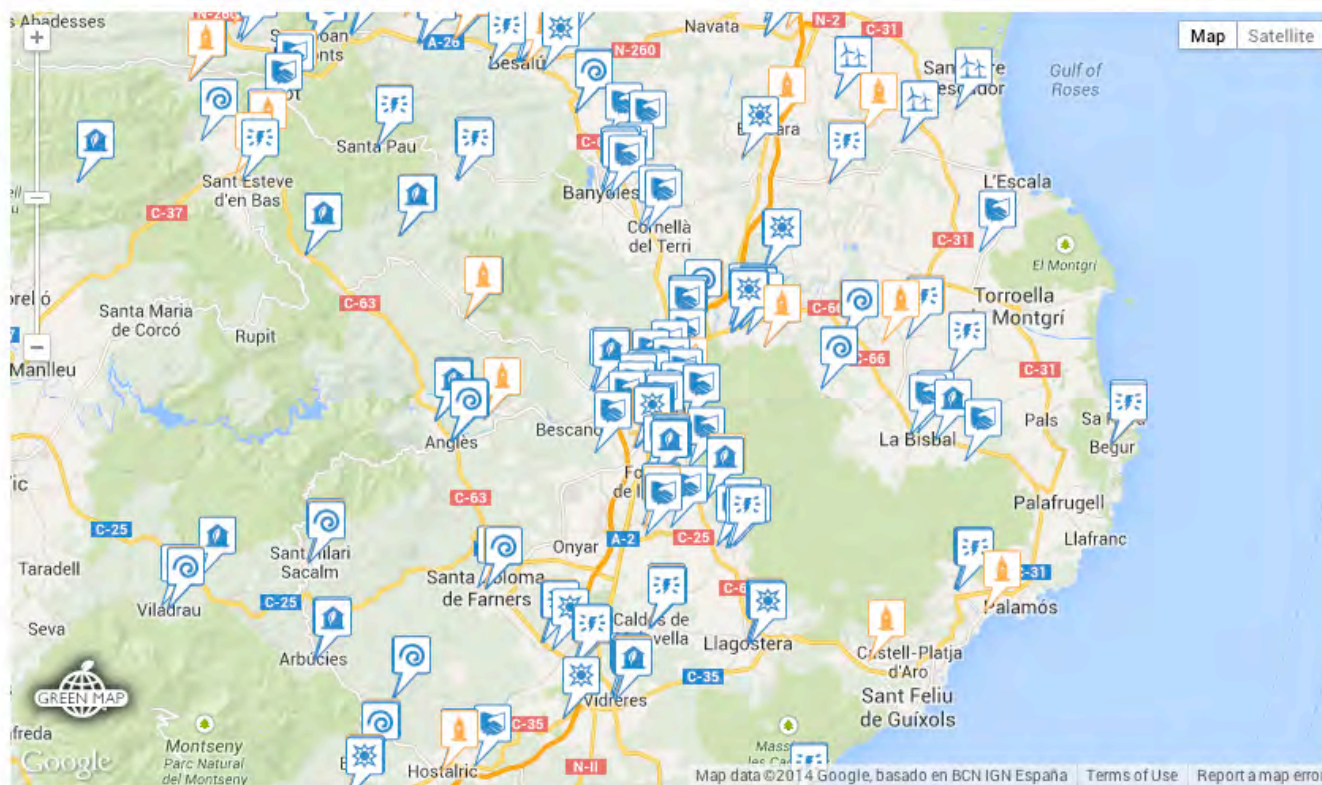
Our NYC climate mapping projects have helped to inspire other Green Mapmakers to illuminate the issue in their community, too



Accions en eficiència energètica i energies renovables (2005-2020)

Girona Province Spain

[View Map](#) [About](#) [Join Map Team](#) [Suggest a site](#)



Renewable Energy is on the Open Green Map by Clima of Girona Spain

OpenGreenMap.org/clima

Environmental Protection - Energy Saving Results

University System & Maryland
 Annual energy cost: \$1,200,000 (Energy Management) \$1,200,000 (Energy Management)
 Daily fuel cost: \$1,200,000 (Energy Management) \$1,200,000 (Energy Management)
 Annual energy cost: \$1,200,000 (Energy Management) \$1,200,000 (Energy Management)
 Annual energy cost: \$1,200,000 (Energy Management) \$1,200,000 (Energy Management)

Water Saving & Management

Annual water cost: \$1,200,000 (Water Management) \$1,200,000 (Water Management)
 Annual water cost: \$1,200,000 (Water Management) \$1,200,000 (Water Management)

Waste Minimization & Management

Annual waste cost: \$1,200,000 (Waste Management) \$1,200,000 (Waste Management)
 Annual waste cost: \$1,200,000 (Waste Management) \$1,200,000 (Waste Management)

Ecological Management

Annual ecological cost: \$1,200,000 (Ecological Management) \$1,200,000 (Ecological Management)
 Annual ecological cost: \$1,200,000 (Ecological Management) \$1,200,000 (Ecological Management)

Air Quality

Annual air quality cost: \$1,200,000 (Air Quality Management) \$1,200,000 (Air Quality Management)
 Annual air quality cost: \$1,200,000 (Air Quality Management) \$1,200,000 (Air Quality Management)

36 대학과 직업 매치

- ① 연세대학교 경영학과
- ② 연세대학교 경영학과
- ③ 연세대학교 경영학과
- ④ 연세대학교 경영학과
- ⑤ 연세대학교 경영학과
- ⑥ 연세대학교 경영학과
- ⑦ 연세대학교 경영학과
- ⑧ 연세대학교 경영학과
- ⑨ 연세대학교 경영학과
- ⑩ 연세대학교 경영학과
- ⑪ 연세대학교 경영학과
- ⑫ 연세대학교 경영학과
- ⑬ 연세대학교 경영학과
- ⑭ 연세대학교 경영학과
- ⑮ 연세대학교 경영학과
- ⑯ 연세대학교 경영학과
- ⑰ 연세대학교 경영학과
- ⑱ 연세대학교 경영학과
- ⑲ 연세대학교 경영학과
- ⑳ 연세대학교 경영학과
- ㉑ 연세대학교 경영학과
- ㉒ 연세대학교 경영학과
- ㉓ 연세대학교 경영학과
- ㉔ 연세대학교 경영학과
- ㉕ 연세대학교 경영학과
- ㉖ 연세대학교 경영학과
- ㉗ 연세대학교 경영학과
- ㉘ 연세대학교 경영학과
- ㉙ 연세대학교 경영학과
- ㉚ 연세대학교 경영학과
- ㉛ 연세대학교 경영학과
- ㉜ 연세대학교 경영학과
- ㉝ 연세대학교 경영학과
- ㉞ 연세대학교 경영학과
- ㉟ 연세대학교 경영학과
- ㊱ 연세대학교 경영학과
- ㊲ 연세대학교 경영학과
- ㊳ 연세대학교 경영학과
- ㊴ 연세대학교 경영학과
- ㊵ 연세대학교 경영학과
- ㊶ 연세대학교 경영학과
- ㊷ 연세대학교 경영학과
- ㊸ 연세대학교 경영학과
- ㊹ 연세대학교 경영학과
- ㊺ 연세대학교 경영학과
- ㊻ 연세대학교 경영학과
- ㊼ 연세대학교 경영학과
- ㊽ 연세대학교 경영학과
- ㊾ 연세대학교 경영학과
- ㊿ 연세대학교 경영학과

[illegible]

Thai youth maps of 50 cities highlight climate issues & opportunities, as seen in the free book at GreenMap.org/impacts



11. Green Mapping over 60 Cities | THAILAND

Stop Global Warming Initiatives

Thailand Environment Institute (TEI) | nongpal@tei.or.th
www.tei.or.th
Author: Nongpal Chienchenon



Green Maps from 25 cities were exhibited in Bangkok, 2006.

Background: A Climate Change Partnership Pairing Municipal Staff and Schoolchildren

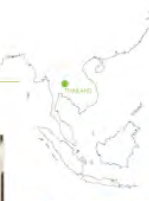
Under the project called "Stop Global Warming Project", Thailand Environment Institute (TEI) has worked with more than 50 local governments at the municipal level aiming to increase awareness about climate change. The project encourages municipalities to work closely with schools and the community to initiate activities that reduce energy consumption and greenhouse gas emissions, leading to a better environment in their city.

The Stop Global Warming project uses Green Map as a situation analysis tool to identify a city's "strengths", "weaknesses", "opportunities" and "threats" using the icons

to visualize 4 main areas: waste minimization, sustainable transport, urban greening and energy efficiency.

"Making a Green Map involves the community and youth through workshops organized by the municipality teams of students, teachers and municipal staff are established and TEI workshops train adults and activate camp for youth."

The project started in 2005 and to date, Thailand Environment Institute has introduced Green Map System to more than 60 cities nationwide.



Students survey their community to chart green sites and bad sites.



Impacts: From Situation Analysis to Strategic Plan

Working with local governments is challenging yet Green Mapping is an effective way of informing local authorities about the problems discovered. The project emphasizes cooperation between local governments and schools, with students representing the residents who live in the city. They provide ideas to improve their cities, such as bike lanes, public spaces, waste banks, recycling points etc.

Tungong, a city located in the south of Thailand, started their Green Map in 2005, charting green sites and pollution sites throughout the city. People of all ages participated. A year later, Tungong developed the second version of the map using an aerial map as a base map, which shows all the physical characteristics of the city such as parks, roads and waterways etc. Through the Green Map, environmental issues were pri-

oritized and local action plans were developed to address traffic, solid waste management, increasing green area, flood prevention and urban planning.

Trang Municipality, a tourist town on the Andaman Sea, used Green Map to promote "green restaurants" that avoid using non-degradable materials such as Styrofoam and plastics. It is hoped that more restaurants will join the initiative to reduce the waste going to landfill.

Using Green Map as a tool has helped local governments, NGOs, communities, and youth find realistic solutions, which often involve field research and input from the community. Municipalities can use Green Mapping to assist in their land-use planning and environmental local action plan to make their city a more sustainable place to live.



TEI's Green Map products may be available at GreenMapping.com

Trang Green Map visualizes the city as a forest.



Co-creating Green Maps with other waterfront communities around NYC is in our future plans

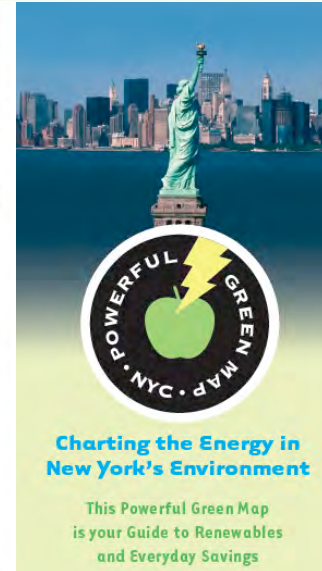


Youth Leaders
on Staten
Island's Port
Richmond,
Summer 2014

More projects
at
[GreenMap.org
/news](http://GreenMap.org/news)



Think Local, Map Social!

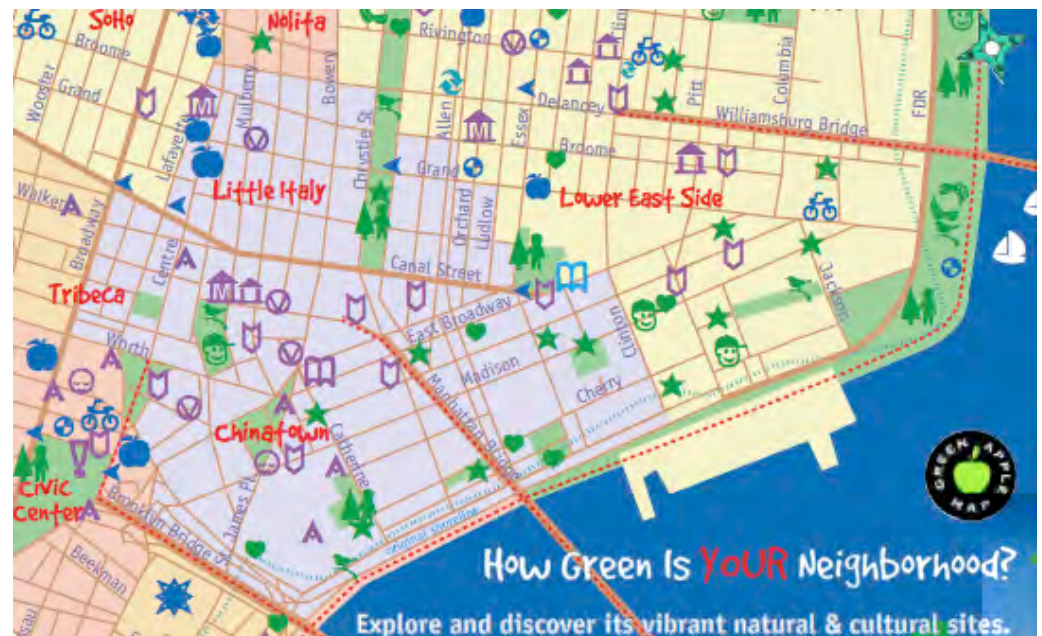


Green Map System's local NYC project created these maps. See more at

GreenMapNYC.org



Wendy Brawer, Director
+1 212 674 1631
web@greenmap.org



Think Global, Map Local!



900 diverse cities in 65 countries
use Green Map System's engaging
tools, icons and technologies



GreenMap.org/join

Climate health
depends on all of us



Be solutionary!
Promote and connect green
living in your hometown