



Every project uses award-winning Green Map Icons to identify, promote and link their community's assets and challenges



multi-lingual posters at [GreenMap.org/icons](http://GreenMap.org/icons)



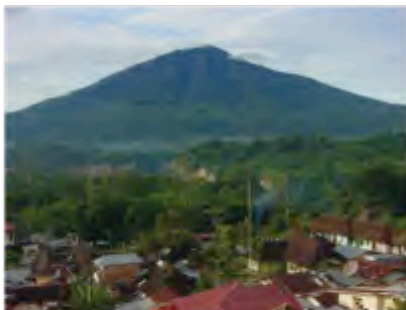
Barcelona's  
Sun Factory



Farmers &  
Artisans Market



Robeson US's  
kayak tours



Yogyakarta ID's  
Geologic Feature



Breda NL's  
Eco Center



Fuel  
Alternatives



170 Green Map Icons are provided as a font that works with any computer program, image sets or as a GIS script



# SUSTAINABLE LIVING

(Sampling of 170 icons)

## Green Economy



## Mobility



## Technology & Design



## Hazards & Challenges





Use them on all kinds of printed, interactive and workshop  
Green Maps as well as education & outreach resources



# NATURE

(Sampling of 170 icons)

## Land & Water



## Flora



## Fauna



## Outdoor Activities





Our set includes social and cultural resources as they contribute to active participation and our sense of place



# CULTURE & SOCIETY

(Sampling of 170 icons)

## Cultural Character



## Justice & Activism



## Eco-Information



## Public Works & Landmarks





Each Green Map project mixes our adaptable, engaging tools for professional, community and youth mapping projects, including:



Icons, Guides, Interactive Platform, Multimedia Resources, Archives, Strategic Consulting, Workshops, Event Support and more





All Green Maps highlight natural, cultural, social and green living sites using Green Map System's global icons and tools. Each print map is unique!

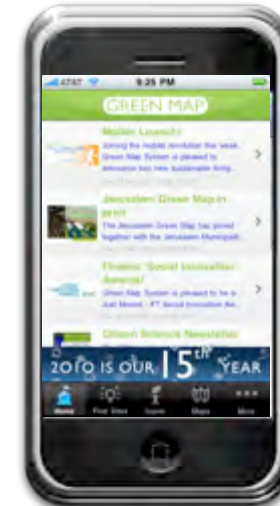
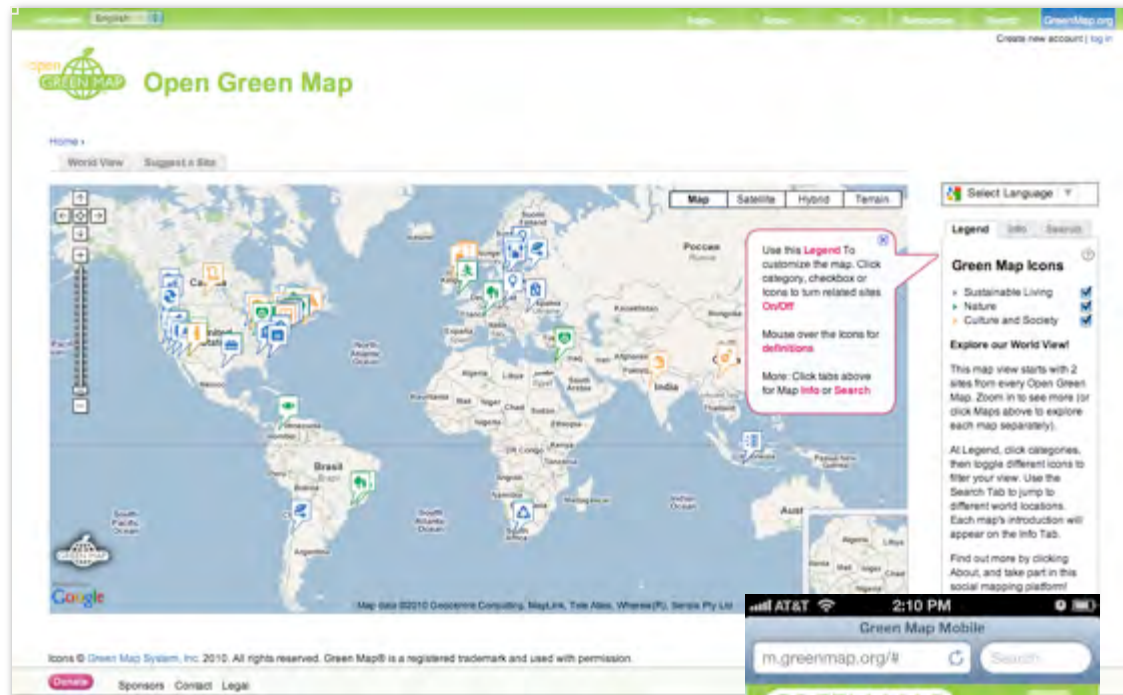


870 cities in 65 countries are registered





Interactive **Open Green Maps** can be created on our mapping platform  
& used online, on mobile phones or as embedded maps using widgets



31,000 sites

350 maps

37 countries

New 'responsive' mobile -  
**m.GreenMap.org**







## Sample Green Map Park

The Sample Green Map Park is a great place to escape urban noise in every season. It features the oldest elm grove in the city and a small lake with paddle boats and rowboats for rent. It's also a popular spot for snow sculpting in the winter!

[More](#)

**Free - Near Public Transit - Wheelchair Accessible - Child friendly**

Rating: ★★★★★ (1 vote)

**Comments**

"What a fun park! Clean and beautiful all year. It's clear that the people that work here take real pride in their jobs." -greengal31

[View All Comments](#)

[Explore Related Content](#)

1211 Greens St.

[Contact Info](#)

[Visit Website](#)

This is a caption describing the multimedia in the slideshow above. There is space for three lines of text.

[Add Multimedia](#)

**Legend** Info Search

### Green Map Icons

- Sustainable Living
  - Green Economy
- Technology and Design
- Mobility

**Legend** Info Search

View: [Mapmaker Profile](#)

View: [Map Website](#)

View: [Map Profile](#)

Download: [Map](#)

The Green Apple Map has provided an exciting overview of New York City's progress toward sustainability since 1992. This map is constantly evolving and frequently updated.

Begun Sep 2008

Updated: 2 weeks ago

**Outcomes**

Number of sites: 238

Team members: 7

Comments: 314

[more](#)

**Add to this Green Map**

[suggest a site](#) | [join team](#) | [contact this Mapmaker](#)

**ICONS**

Rollover each Green Map Icon to learn about sustainability

**SOCIAL INCLUSION**

Site accessibility indicators for children, disabled, public transit, free, and more.

**CONNECTIONS**

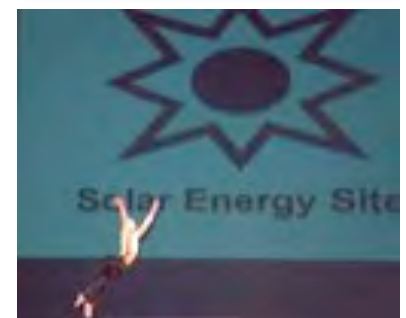
Compare this site to others for inspiration and learning

**MULTIMEDIA**

Share images, videos, PDFs, podcasts about each site.



Green Map projects have also produced cultural events, workshops, tours, youth contests, performances, videos and more





# Our co-created tools, icons and ways of engaging participation have received global recognition



10 Days of Climate Action 2012

Victor J Papanek Social Design Award 2011

US National Sustainability Award:  
New Communications Tools

United Nations Global Best Practices 100

The Tech Awards Laureate

Spirit of the Land - Salt Lake City Olympics

EXPO 2000 Project Award the World

Open Green Map's awards

Treehugger Best of Green 2011

Living Labs Global 2010

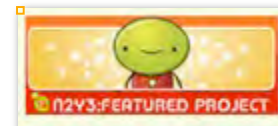
INDEX Awards Finalist 2009

Cause / Affect

Tele Atlas Maps in Apps

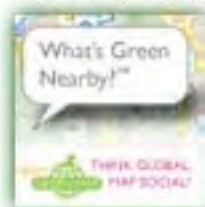
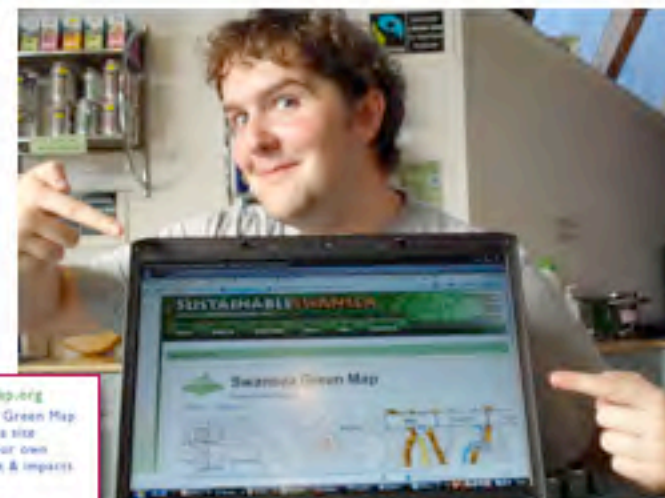
NetSquared

We Media Pitch It



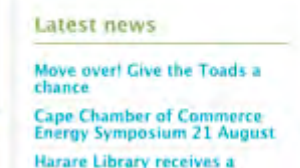


Our tool kit even includes graphics, event and PR tools for involving your community and media. **Examples of print maps follow this page**





In South Africa, the City of Cape Town used a mix of our tools to reach residents & visitors, producing Open Green Maps and 4 printed maps



Tweets

Follow @captowngreenmap



The Green Map is one of the City's three 'legacy projects' from the 2010 FIFA Games. Now, a national Green Map is being planned



Directed by the City's Sustainability Office with mapping partners

Awards and ongoing innovation:

2010 International Olympic Committee Best Sport and the Environment Award



World Design Capital 2014

Table Mountain achieves Natural World Wonder



[CapeTownGreenMap.co.za](http://CapeTownGreenMap.co.za)

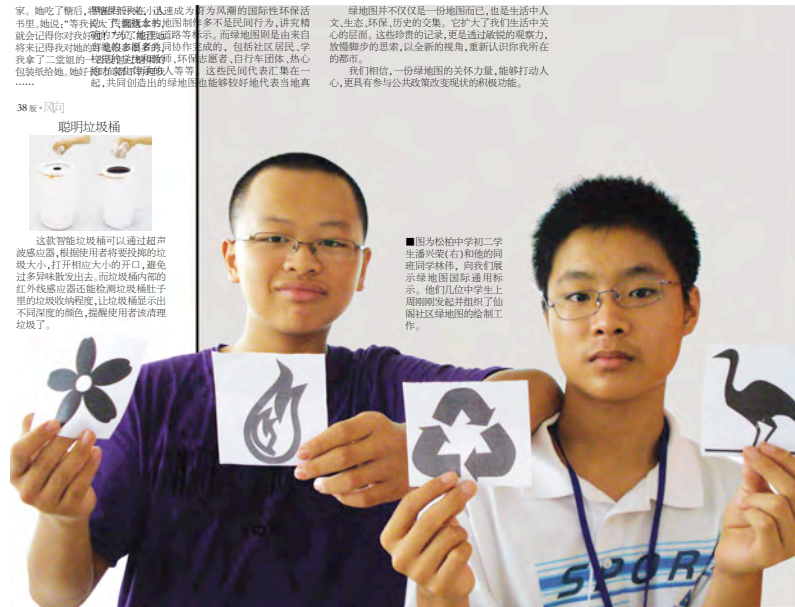


Asia network: China, Japan, Indonesia, South Korea, Taiwan and more.  
Here, Kyoto City Planning and NGOs collaborated on bicycle tourism map



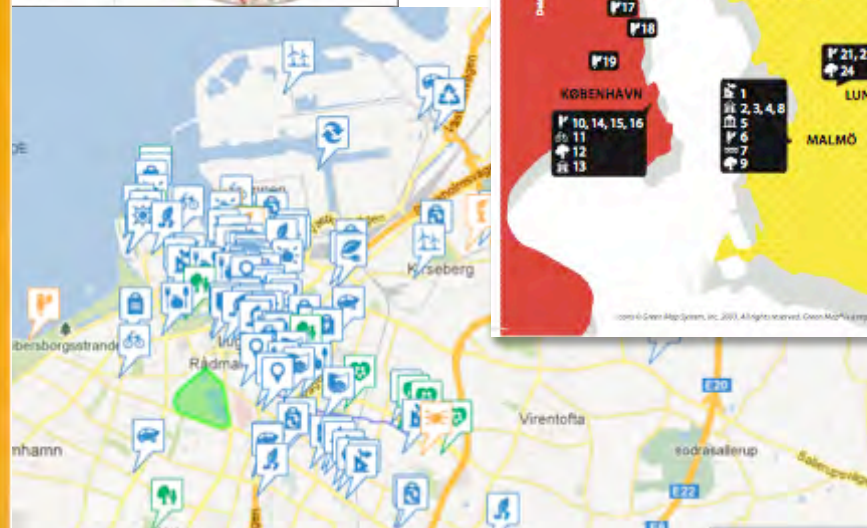
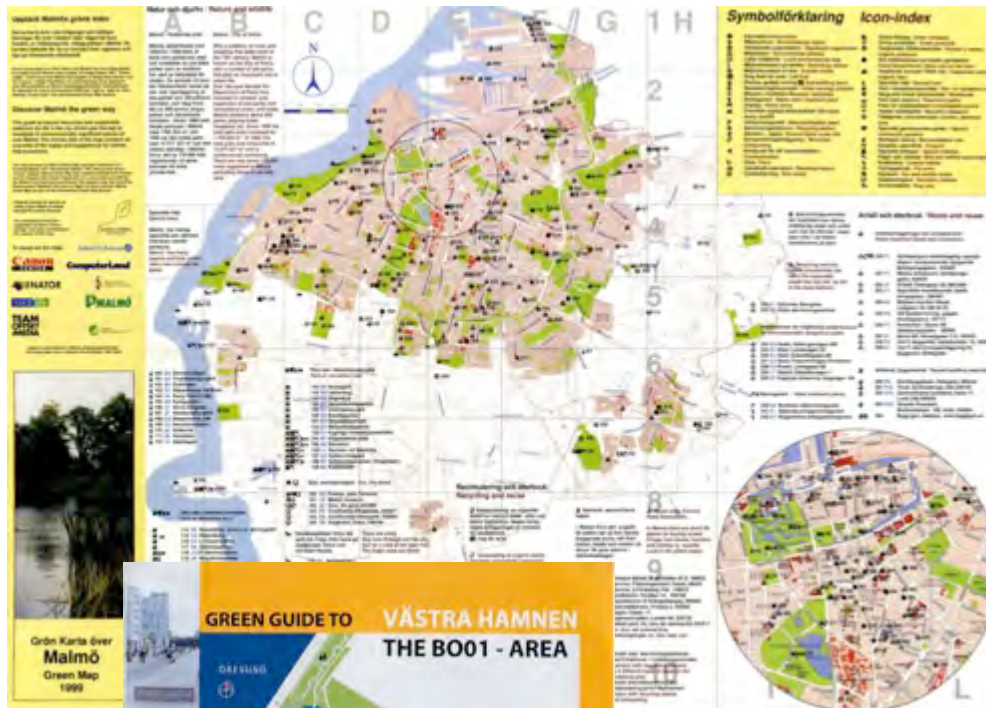


# In China, Green Maps address chronic issues impacting biodiversity, water, land use etc. Partners include China Mangrove Conservation Network & WWF





City of Malmö Sweden's Open Green Map focuses on climate change. Print maps highlight development and in 2013, regional education for sust dev

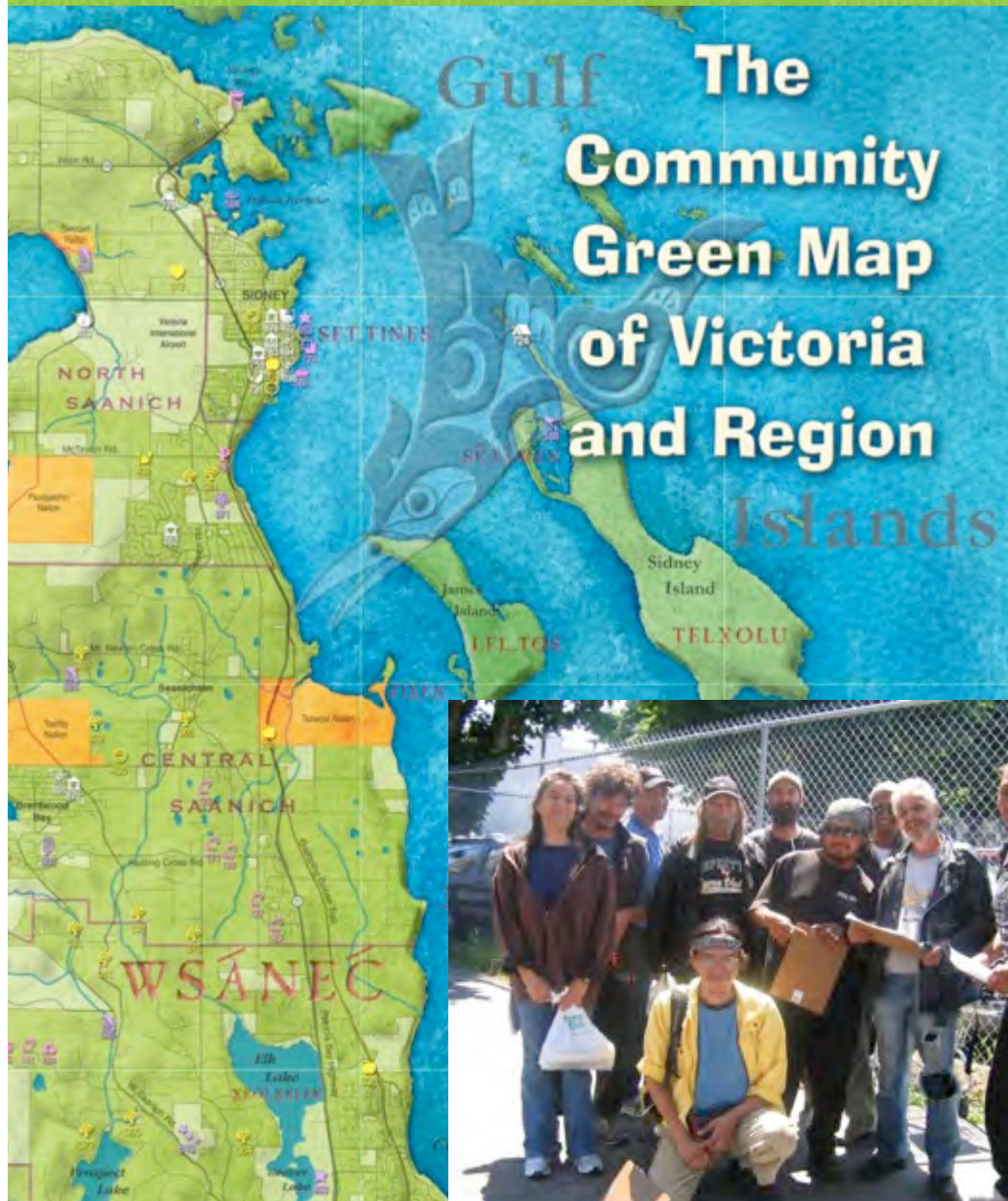








In Canada, University of Victoria Geography & Community-based programs address social crises by amplifying marginalized perspectives of the commons



### Victoria Fruit Tree Project

In the 1800s, Victoria became the legendary fruit-growing centre of BC and stately old backyard fruit trees are the legacy of flourishing orchards from that era. Since 1998 the Fruit Tree Project, with volunteer assistance, has transformed these trees into a valuable source of food for the community. On average, 20,000 pounds of fresh fruit that might have gone to waste is harvested and distributed through community centres and food banks, and shared amongst volunteer pickers, tree owners and the Fruit Tree Project.

Contact us by email: [fruittree@lifecyclesproject.ca](mailto:fruittree@lifecyclesproject.ca) or by phone: (250) 385-PICK (7425)

### Fruit Tree Map

The coordinators of the Fruit Tree Project carry a map of the city around to community events. On the map, people place a pin showing what kind of fruit tree they have in their backyard. They then give their contact info to the project for the harvest season. Over the years, the map has been a practical tool for the FTP's volunteer fruit pickers and has become a portrait of community involvement.

Pear & Plum Trees planted by homesteaders prior to 1853. Apples planted by Hudson Bay Company. Trees produced enough fruit to help feed convent residents for over a century.

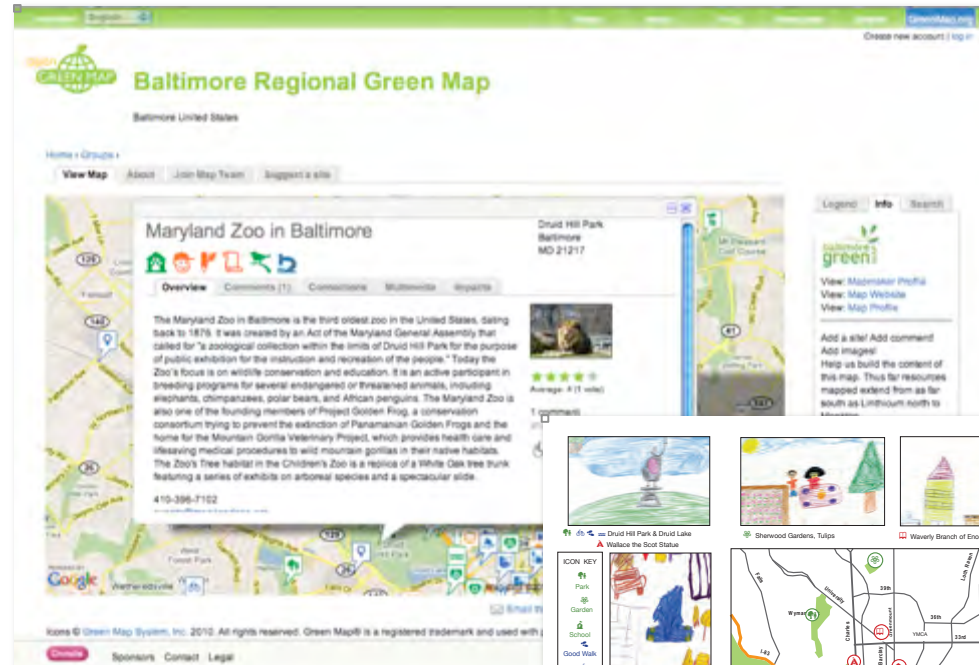
In 1937, Victoria's Japanese community donated 1013 flowering cherry trees for the city's streets. Trees remain in Ross Bay cemetery and on Heywood Avenue.

"Father pruned the cherry tree under the bedroom window. The cherry sticks were tasty but I took three of the straightest, fed them at one end and straddled them at the other and put two big nails in the wood to hold a drawing board. With this easel under the dormer window of our bedroom I felt completely an artist."

Emily Carr, whose father planted fruit trees across James Bay

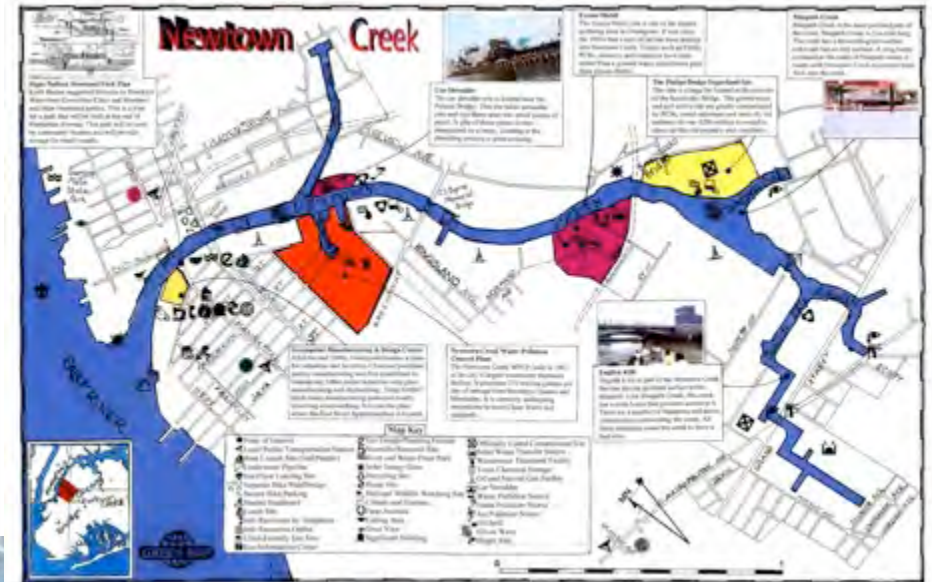
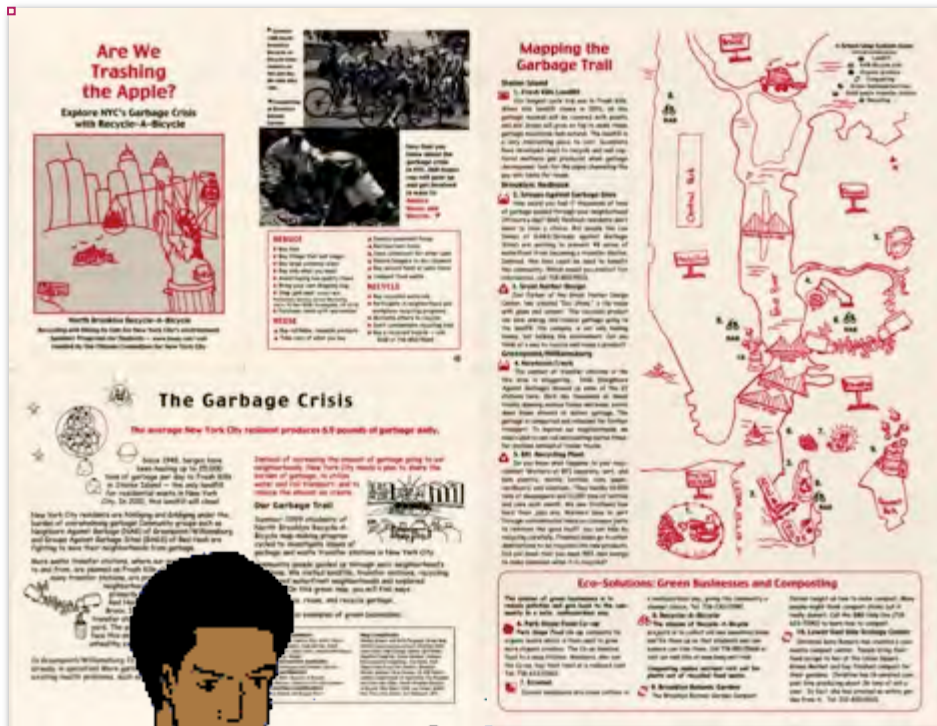


# Even a one-person project like Baltimore Green Map can turn a labor of love into a livelihood





# In New York City, youth Green Maps address difficult issues, including our garbage crisis, waterfront access and air quality



## Space to Breathe ~ El Espacio de Respirar

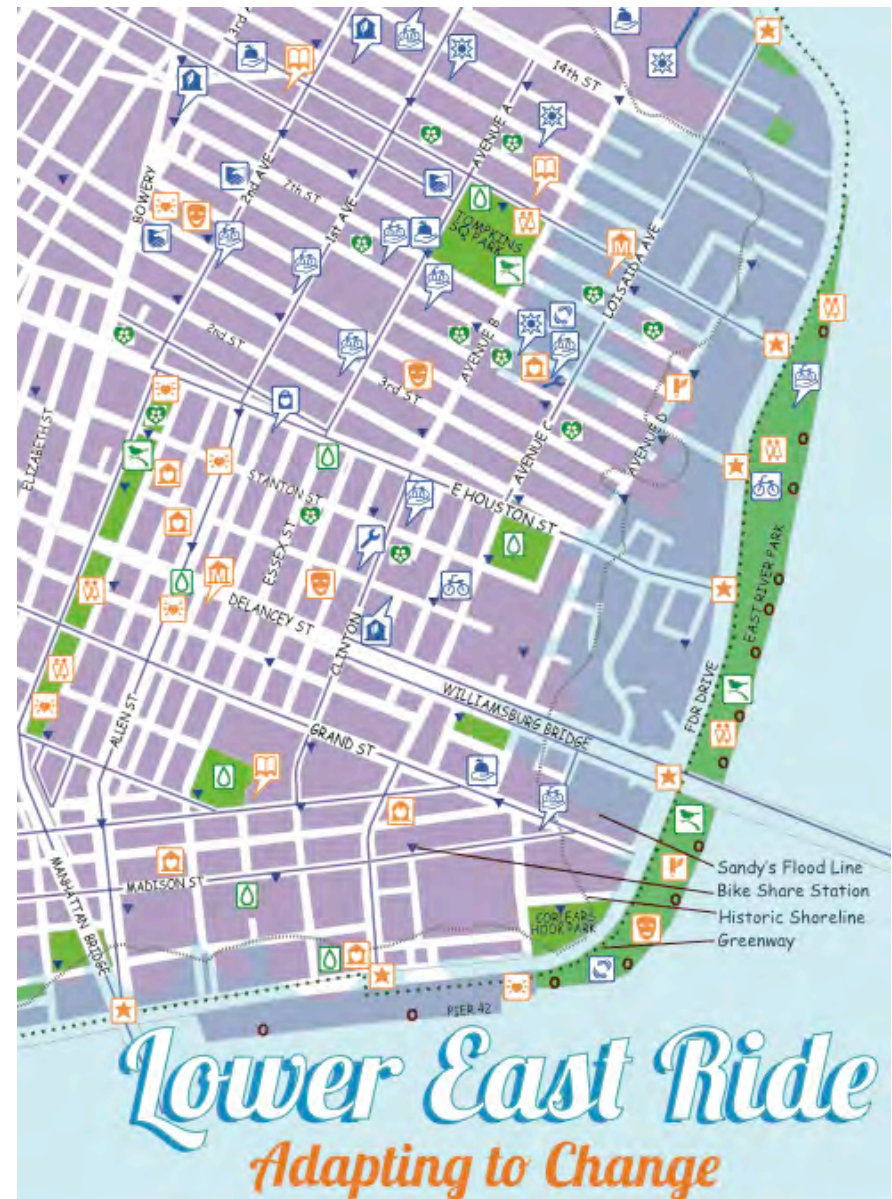
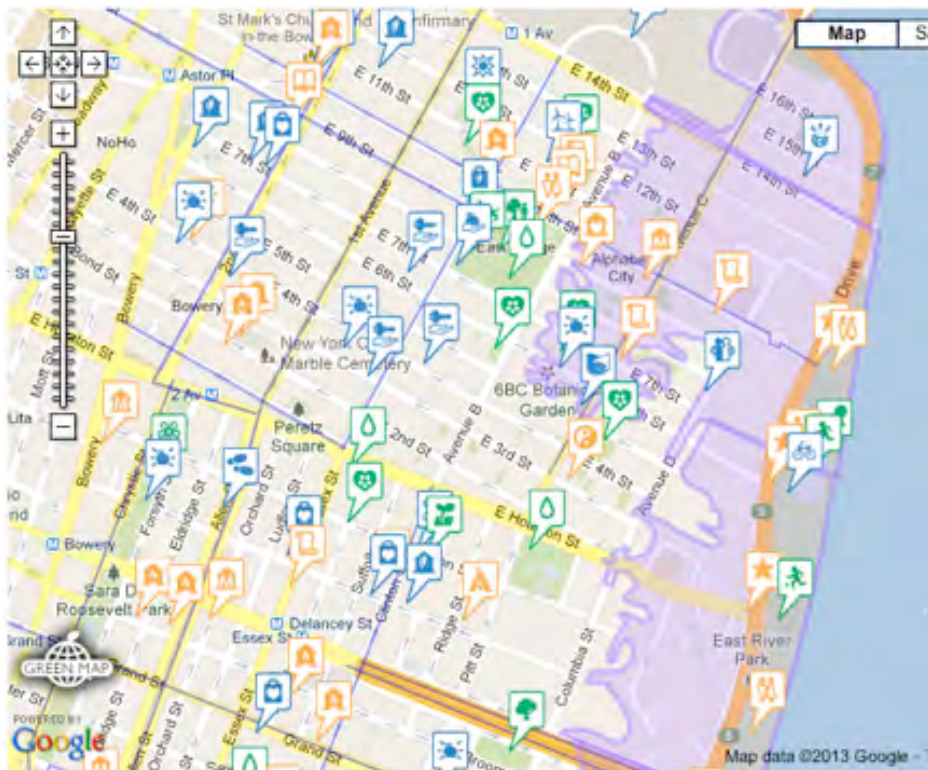


Recycling and Biking by Kids for New York City's Environment





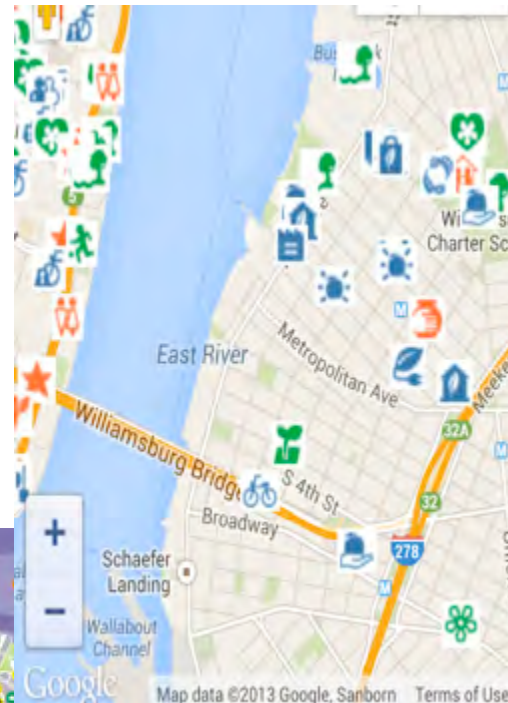
Green Map System's own local NYC project has several themed editions. This is our 'Adapting to Change' post-Sandy map and tour series





How Green is Your City?

Create a Green Map and help everyone get involved!



Register at

**GreenMap.org/join**

get access to all our tools, icons  
and networked expertise for  
printed, interactive and  
workshop Green Maps



# Think Global, Map Local!



GreenMap.org

info@greenmap.org

+1 212 674 1631

facebook.com/greenmap

#GreenMap