

Seasonal forecasts of above-average temperatures and average to below-average precipitation for the October 2016 to May 2017 wet season bore true in the fourth quarter of 2016 with rainfall and snow accumulation well below average throughout most of the country, with the exception of Balkh and Ghazni provinces.¹ With both temperatures and near-surface air temperatures expected to be above the short-term average of recent years, a mild winter is not only expected but likely to drive below-average snowpack and early spring melting, with the increased possibility of flooding from February-April 2017.

Vulnerable Populations

623k displaced due to conflict²
23% male | 22% female | 55% U18

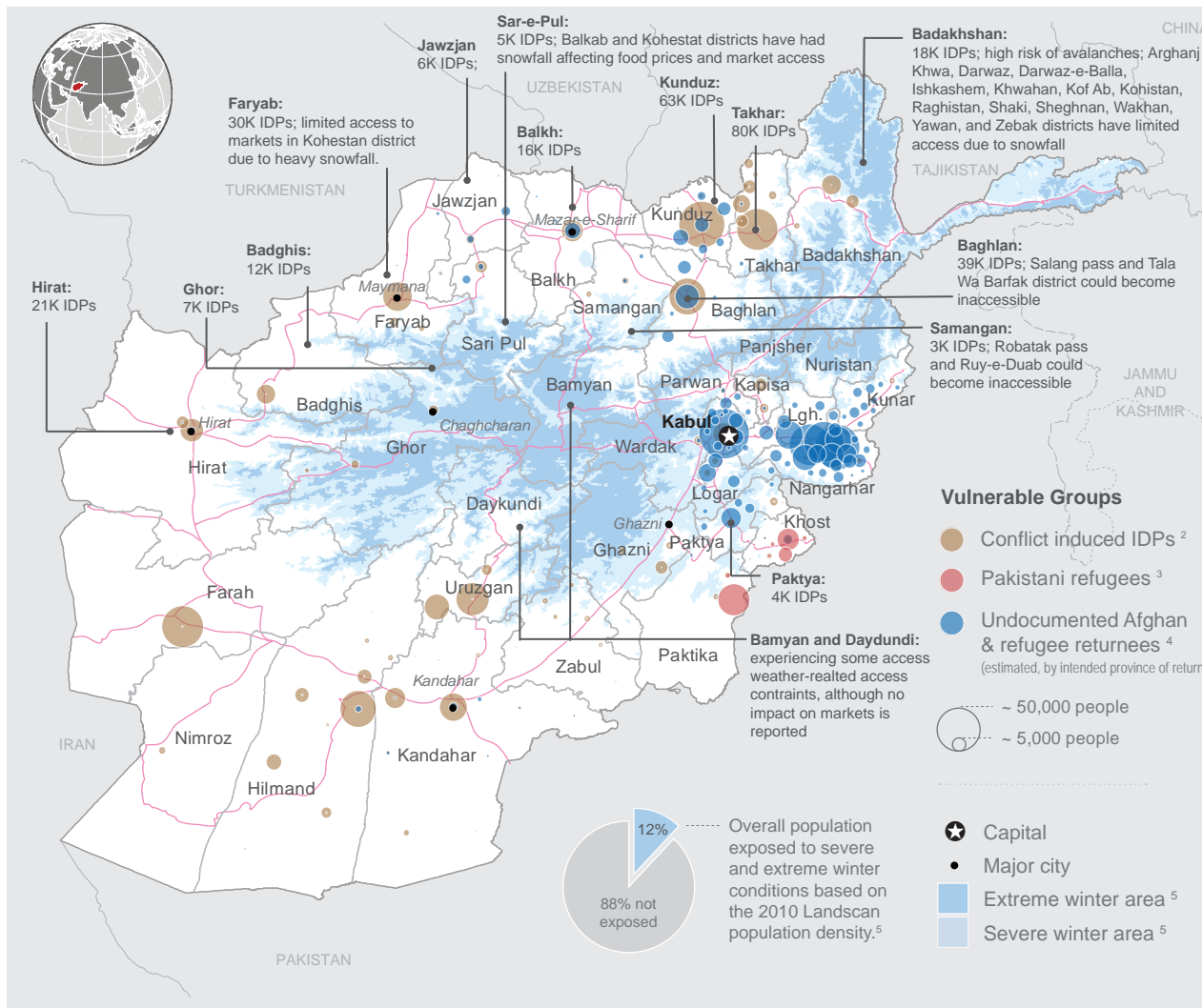
370k Afghan refugee returnees⁴
21% male | 22% female | 57% U18

248k undocumented Afghan returnees⁴
24% male | 24% female | 52% U18

55k reverified Pakistani refugees³
17% male | 12% female | 70% U18

Inaccessible Areas

The relatively mild winter has resulted in fewer access constraints to areas typically cut-off at this time of year, but Kohistan district in Faryab province, where insecurity and recent heavy snowfall have hampered the delivery of food supplies to local markets resulting in significant price increases compared to previous years, and in Sar-i-Pul and Badakhshan provinces where a combined 15 districts have experienced weather-related access constraints and subsequent price increases. In Kohistan, wheat flour is 38% higher than in the Maimana regional market, while rice and sugar prices are some 54% and 82% higher respectively. Elsewhere, in the Western region, all roads are currently open in Ghor province, in contrast to 2015 when 13 passes were closed at this same time. Reports from Khost province that 5,000 families across Spera (3,000) and Tani (2,000) districts are inaccessible due to snowfall are yet to be verified.



Winter-Related Illnesses

Concerns of a spike in winter-related illnesses such as bronchitis and pneumonia have not materialised as trend data indicates that current rates are in line with seasonal averages; in the Northern region, 939 cases of pneumonia were recorded in the last week of 2016 in comparison to a three year average of 1,170. Reports of additional strain on Nangarhar regional hospital as a result of a sudden surge in pediatric admissions are also not thought to be exceptional; the health cluster in collaboration with the Department of Public Health is currently undertaking an assessment to determine the reasons behind the increase.

Health cluster partners have existing stock (both pneumonia A+B and emergency health kits) to cover 144,000 cases of pneumonia and 69,300 cases of other common diseases.

Humanitarian Assistance

UNHCR has completed winterisation assistance consisting of \$200 per household⁷ to 22,406 vulnerable IDP, refugee, returnee and host families across Afghanistan, as well as cash for winter support to 10,000 families in Khost province and blankets to 9,580 families. Fuel assistance has also been provided to 230 classrooms in Gulan camp and the neighbouring districts of Tani, Nadarshkot, Mandozai and Gurbuz.

WFP has distributed just under half (2,129 MT) of the 5,441 MT of food commodities it prepositioned across priority areas, supporting 37,500 protracted IDP households with two months food ration comprising 100kg of wheat flour to cover consumption gaps over the winter period. 22,575 people have also received winterisation support in the form of livestock protection. FSAC partners currently have sufficient winterisation stock (both cash and food) to assist an additional 185,000 people affected by winter.

In the Central Region, 63,790 IDPs and 6,370 undocumented returnees have received shelter support and blankets, while in the Kabul Informal Settlements, 7,115 families have received a one month food ration from WFP; 2,800 families have received firewood packages from ADRA, and a further 2,700 families are to be assisted over January. Other NGO partners (DRC) are also providing cash for fuel support.

Afghanistan Flash Appeal: One million people on the move

(September to December 2016)

\$80.8m received⁶ | **1m** targeted
additional \$10.4 million pledges

Pre-positioned Food Commodities

(To vulnerable communities in remote areas)

60 districts | **188k** beneficiaries

Winter Support to Vulnerable Population

(Blankets, fuel assistance and NFI kits)

80k blankets / fuel | **20k** non-food items

The designations employed and the presentation of material on this map do not imply the expression of any opinion whatsoever on the part of the Secretariat of the United Nations concerning the legal status of any country, territory, city or area or of its authorities, or concerning the delimitation of its frontiers or boundaries.

Creation date: 11 Jan 2017 **Notes:** (1) FEWS NET Afghanistan Food Security Outlook Update, Dec 2016 ; (2) OCHA, 1 Jan to 23 Dec 2016; (3) UNHCR, reverified as of 20 Nov 2016; total refugees expected to reach 125,000 when verification is complete; (4) UNHCR (registered returnees), IOM (undocumented returnees), 1 Jan 2016 - 7 Jan 2017 (5) OCHA extreme winter analysis, 2014; (6) FTS & agency reporting, total requirement: \$152 million; (7) \$100 per household is being provided in the Southern region and in Khost province

Feedback: ocha-afg@un.org **Website:** http://afg.humanitarianresponse.info