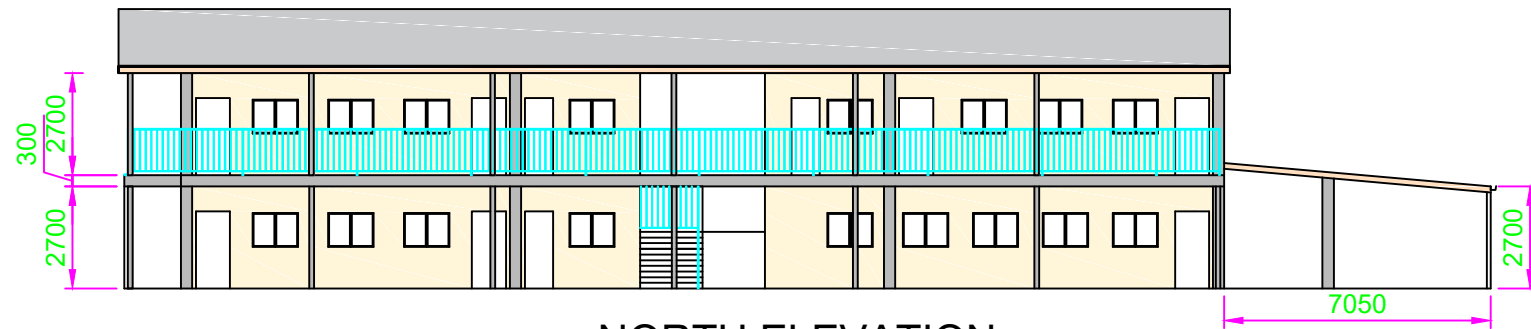
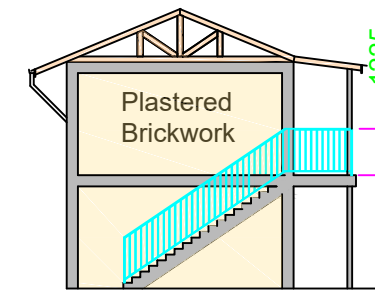


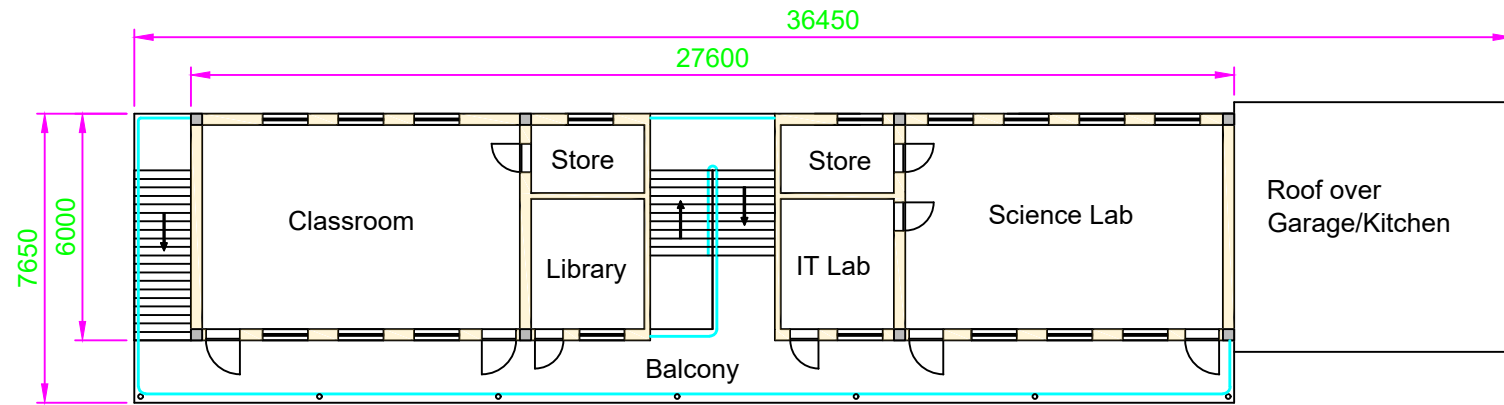
SOUTH ELEVATION



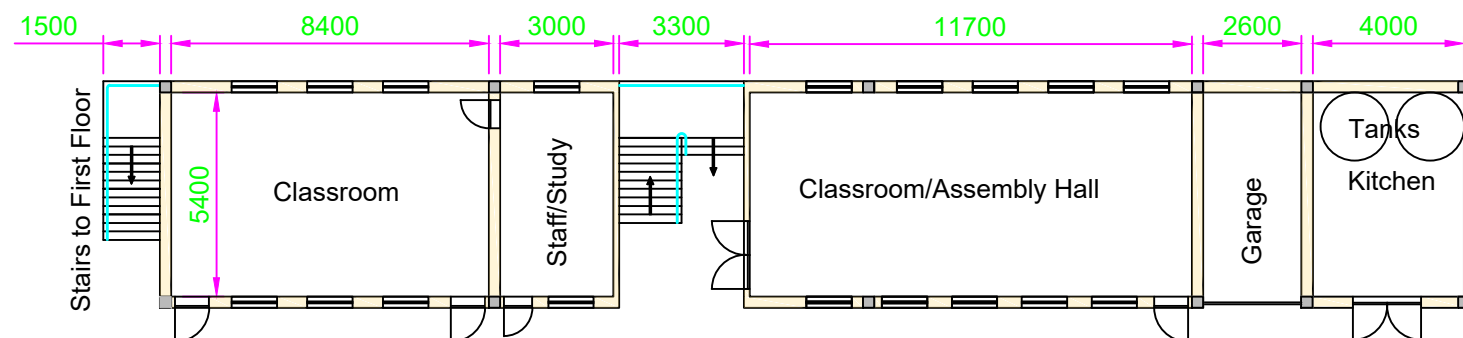
NORTH ELEVATION



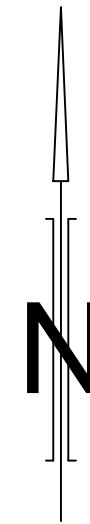
EAST ELEVATION



FIRST FLOOR PLAN AT 4000 ABOVE GFFL



GROUND FLOOR PLAN AT 1800 ABOVE GFFL



Notes:

Reinforced concrete framed building with plastered brickwork infills, strip footings, floor slabs, stairs, ring beams, columns to engineer's instructions (reinforcements and size). 15 trusses at 2000 spacing, top, central and bottom chords, struts and purlins to engineer's instructions. Electrical, fire protection and plumbing to consultants' instructions. Site setout, glazing, rails, doors, windows and furniture to architect's instructions.

GOD'S LOVE HOUSE
KIBWA, KAMPALA



Rev:		Date:	
Title	Two Storey Classroom Block		Drwg No: GLH01
Drawn: D Meadows	Date: Aug-16	Checked: D Meadows	Scale: 1:200 Sheet: