



2013 ANNUAL REPORT

“If you think education is expensive, try ignorance.”

-African Proverb

gratitude

Over the last year, EKARI has seen tremendous growth, transformation, and impact as we continue to serve the needs of students and their communities. This is in many ways humbling, gratifying, and exciting for what the future brings.

It is humbling to see the quality, amount of effort, and work that many volunteers and our staff pour into making a substantial difference. The difference that allows students to progress in their education and break the bonds of poverty. The difference that allows every penny of your contributions to be used in the most effective way. The difference that transforms dependent communities into self-sustaining communities who someday soon will pay forward your contributions to help other communities in need.

To the countless donors who gave of their heart and abundance, entrusting us with the resources to make a difference - thank you. To the talented professionals who are passionate about putting their skills to use, helping us tell the story of the students and their families - thank you. To all who have helped spread the word and awareness through social media and conversations with friends - thank you!

It is exciting to assist people who have grit and willpower, are bright and only lack basic resources to become great game changers in their lifetime. You are a member of our EKARI community. I invite you to continue to be part of significant change and growth in Phalombe, Malawi, Africa.



-Francois Burianek, U.S. Board President

In 2009, the EKARI Foundation supported 20 students with tuition and uniform costs. Little did I know what our future held. After much consultation with students and community members in Malawi and with generous support from our contributors, the EKARI Foundation has grown to support over 50 students and seven Complementary Student Programs, which benefit our students outside of the classroom. We are not stopping there. It is our immediate goal to establish new programs in order to support our students' families and communities.

2013 was a year of growth that was made possible by the support and guidance from our newly established U.S. Board of Directors, Malawi Student Board, and expanded Malawi Board of Directors. EKARI's presence has grown in Phalombe as we now have a rental office space in the market area. Elias is now employed full-time as our In-Country Director and we hired a part-time office assistant. We added two Complementary Student Programs in 2013, developed two community programs that we will implement in 2014, and completed research for another community program that we will continue to develop and plan to implement in 2014.

As I have said before, the two words 'Thank You' will never fully express my gratitude. But nonetheless, I would like to thank all of our supporters. Because of you, the EKARI Foundation is making a difference in Malawi. Without you, EKARI would not be the organization that it is today. Zikomo kwambiri! Thank you abundantly!



-Michelle Bradley, Executive Director



The past year and a half has been a challenging time for me personally because I had to decide whether or not to quit my job with the Malawi Ministry of Health and work full-time for EKARI. I received much support from the U.S. office and U.S. Board of Directors and I now know that I made the right decision. To all EKARI donors, I thank you for your contributions to our programs that, due to your support, we successfully implemented in 2013. May God bless you all!

-Elias Makina, Co-Founder and Malawi
In-Country Director



On behalf of the Malawi Board of Directors, I would like to thank all sponsors/donors for supporting our students and programs. You are uplifting the lives of many needy Malawians. We are very grateful for your support. 2013 has been a growing year in which we established ourselves publically with our rental office in Phalombe, which was made possible by your contributions. We enjoy seeing community members coming to our office seeking educational support. Please keep up the good work!

-White Yohane, Malawi Board President



I write on behalf of all EKARI student beneficiaries. We do not take the privilege of an education for granted. We utilize what we are offered through our sponsorship and EKARI programs to the maximum. This means that we aim high to achieve great results at the end of our educational journey. We thank all donors for supporting us through the Sponsor a Student Program and Complementary Student Programs. We would not be able to progress successfully without these programs. We thank you!

-Jenipher Macheso, EKARI student beneficiary



We are very thankful to all American donors who contribute your own finances to support our children. Most families in Malawi are very poor and cannot afford to send their children to a school that requires payment of school fees and support for basic necessities. On behalf of my fellow Malawian parents and guardians, I thank you and ask God to abundantly bless you and give you long life.

-Mrs. Kavala, mother of EKARI beneficiary

our vision

Empowered communities leading self-sustaining lives filled with dignity and self-worth.

our mission

We believe in providing the resources and training necessary for those most in need to emerge from poverty through their own efforts. We work in Phalombe, Malawi, Africa to empower students with education and their communities with sustainable livelihoods in order for students and communities to empower future generations.



program highlights



Sponser a Student Program

Funding for this program has increased greatly allowing us to provide mosquito bed nets, luggage, and bedding to our students. We can now also better support our students who attend high quality private schools as well as our students' higher education. This year we are especially proud of our college graduates Laston, Raphael, and Lazarous and our high school graduates Rynet, Cathreen, Aubrey, and Charles. We continue to support 50% female/50% male students.

Library Program

As our library grows, students are able to borrow much needed textbooks in order to study for exams. Currently students are able to borrow three textbooks per term. This year, we were able to add to our library by procuring a large number of books from Malawi's National Library. We are grateful to our Belgian volunteers who started a fiction section with their Books for Malawi project.



Tutoring Program

This year, based on student requests, our Tutoring Program focused on English, mathematics, biology, and physical science. Not only does our Tutoring Program provide educational support outside of the classroom, it also provides additional income to local school teachers that EKARI hires to teach our students. Our students recommend the teachers based on the teachers' performance and attentiveness in the classroom.



3 Meals a Day Program

EKARI now follows Malawi's Six Food Groups. We serve students animal foods such as eggs and staples such as cassava for breakfast; vegetables with lunch and dinner; fruits with dinner; legumes interchanged with animal foods for lunch and dinner along with a staple; nuts for snacks; and fats through cooking oils. EKARI now hires two community members to cook meals so our students can focus on their studies rather than cooking.



Health Education & HIV/AIDS Awareness

Shortly after we established this program in December 2012, we realized that 50% of our students do not learn about HIV/AIDS at school or at home. Therefore, through the program this year we educated and assisted our students in coping with societal and cultural challenges associated with not only early pregnancy, but also HIV/AIDS, STDs, and associated topics of peer pressure, alcohol, and drugs.



University Coaching Program

EKARI's pilot year to prepare students for Malawi's university entrance exam and assist students' with the higher education application process was a success. This program will become an annual program. Our coaching session included youth from the community who were not part of our Sponsor a Student Program; this is the first of our Complementary Student Programs to extend into the community.

Computer Program

EKARI launched our pilot Computer Program this past September! We developed this program in response to our students' request for an educational activity during their 'transition year' between high school and a higher education. Ten EKARI students participated and learned about computer 101, Microsoft Word, and use of the internet. We will now assess this program to determine if it will become one of our long-term Complementary Student Programs.



Educational Field Trip Program

On August 23rd, our students were up at 3 am with excitement and boarded buses at 4:30 am for their journey to Lake Malawi. A majority of our students had never seen Lake Malawi - the eighth largest lake in the world. That day our students learned how to detect a fish's age at the Malawi Fisheries Department, viewed fossils and pottery that they learn about in their schools at a nearby museum, and visited a shipping company where they received a ship tour.

malawi

44.7 Percentage of Malawi's
16 million people under
the age of 14

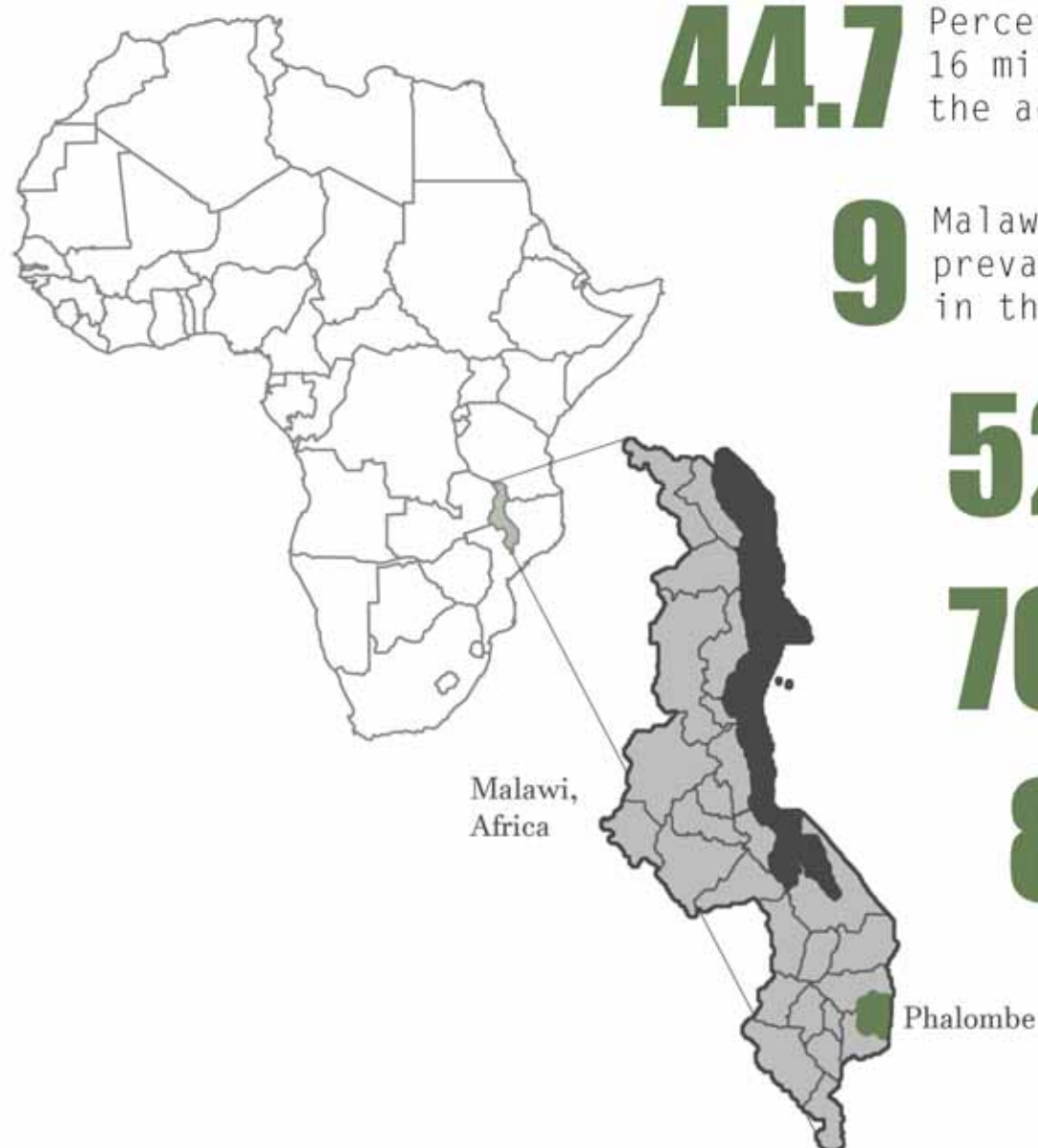
9 Malawi has the 9th highest
prevalence rate of HIV/AIDS
in the world

52.78 Life expectancy at birth

76.98 Deaths for every
1,000 live births-
10th highest in the world

80 Percentage of population living
in rural areas dependent upon
agriculture/subsistence farming

1 of every two Malawians lives
on less than a dollar a day



74.8

Malawi's literacy rate compared to 99% for the US

150

Average number of children per primary school teacher



9

Number of years of schooling a Malawian child can expect to receive compared to 16 years in the US

18

Percentage of youth in Malawi who start a high school education



52

Percentage of Malawi high school seniors that passed senior year exam

1

Percentage of youth accepted to Malawi Universities



impact 2012-13 school year



59 students impacted

85%

STUDENT PROGRESSION RATE

95%

STUDENT RETENTION RATE

39 students gained practical knowledge outside the classroom



10 STUDENTS

completed computer program

33



students fed during school holidays



students sponsored

15 higher education
1 awaiting acceptance to higher education
24 high school
3 primary school

100%

(4 of 4 students graduated from higher education)

44%

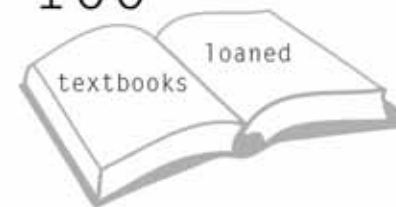
(4 of 9 high school seniors graduated*)

student completion rate

*See Looking Ahead section below for plan to address this percentage

EFFECTIVENESS RATING
(calculated based on student progression and retention rates; see our Impact page)

OVER 100

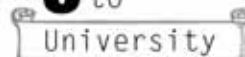


textbooks



students prepared for Malawi University entrance exam, including 4 EKARI students and 16 from local areas

9 accepted to



University



2012-13



2011-12



100%

of high school students tutored and educated about HIV/AIDS



students supported with higher education application process

RHODA



Rhoda qualified for acceptance to two of the best high schools in southern Malawi. However, as the eldest of four children, her father deceased, and her mother suffering from HIV/AIDS, Rhoda could not find support for her education. Although Rhoda's mother has since died, with support from the EKARI Foundation she is now succeeding in school and hopes to pursue a degree in the medical field.

AONENJI



Mid-way through his senior year, the local social welfare office cut Aonenji's tuition assistance. With his father deceased, his mother unemployed, and funds from his part-time job in the school kitchen unable to cover his tuition, Aonenji turned to the EKARI Foundation for support. With assistance from the EKARI Foundation Aonenji is now a primary school teacher in Malawi.

LASTON



Laston's parents died when he was very young. Laston's uncle tried to provide for Laston and his four siblings by performing manual labor in Mozambique and Malawi, but was not able to support all five children and turned to the EKARI Foundation for assistance. With support from EKARI since 2010, Laston graduated from high school, then college this past November, and recently interviewed for a job with a local nonprofit organization in Phalombe.

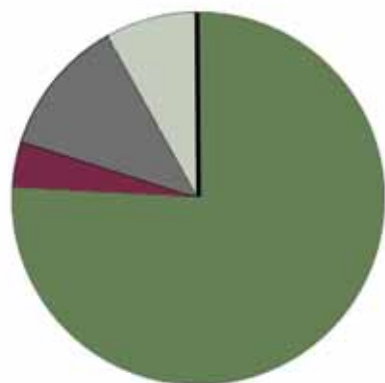
JENIPHER



Jenipher's uncle provides for many of his nieces and nephews as several of his siblings and their spouses have died, including Jenipher's parents. He sought assistance from the EKARI Foundation for Jenipher in 2010. Jenipher struggled in high school and nearly dropped out before reporting her difficulties to EKARI. EKARI supplied the support and increased funds required for Jenipher to attend a higher quality school and she is now succeeding and at the top of her class.

financials*

INCOME



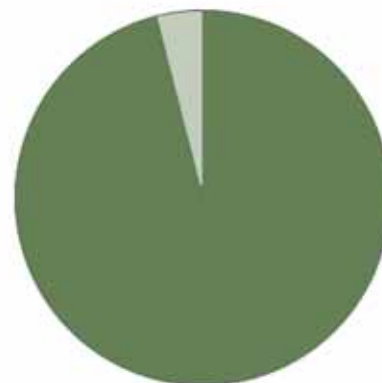
Contributions by Type

- Individual - 75.99%
- Corporate - 4%
- Corporate Match - 12%
- Grant - 8%
- Other - .01%

2012-13 Income - \$47,549.35

2011-12 Income - \$22,821.36

EXPENSE



2012-13 Expenses/Investments

- Programs - 96%
- Overhead - 4%
- Fundraising - 0%

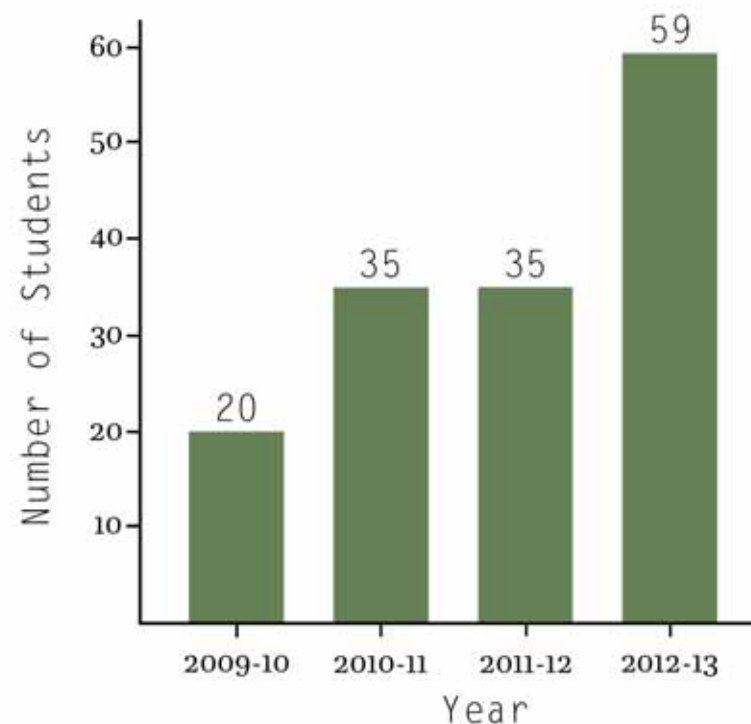
2012-13
Expense/Investment - \$46,855.11

2011-12
Expense/Investment - \$22,515.34

PROGRAM/FUND INVESTMENTS**

	2011-12	2012-13
Sponsor a Student Program	\$17,053	\$24,070
Library Program	\$525	\$1,325
Tutoring Program	\$875	\$2,725
3 Meals a Day Program	\$850	\$1,325
Health & HIV/AIDS Program	\$0	\$200
University Coaching Program	\$0	\$1,500
Computer Program	\$0	\$3,403
Educational Field Trip Program	\$500	\$717
Building Program	\$0	\$1,500***
Continuing Education Fund	\$0	\$1,200****
Malawi Field Office Fund	\$0	\$1,065
Monitoring & Evaluation Fund	\$0	\$2,892

STUDENTS IMPACTED



*Reported by fiscal year ending June 30 **Funds spent in Malawi - funds invested in education ***Land purchase ****For Malawi employees - Elias received diploma in business management

how to get involved

communicate

Sponsors and non-sponsors alike are free to correspond with our students throughout the year. Simply fill out the communication form on our website.

be aware

Become more aware of how your actions locally can directly affect communities around the world, including EKARI beneficiaries, by signing up for our monthly e-mail updates. Read our Donor Awareness section that includes information about Malawi and ways you can easily be involved in global initiatives. Stay engaged on our Facebook and Twitter pages.

volunteer

We have exciting volunteer opportunities in the U.S. and Malawi! Visit our website for more information.

support our cause

Host a party at your home to raise funds for and spread awareness about EKARI. Join our monthly giving program, the Empowering Grace Giving Circle. Purchase from our local small business partner, Safi Naturals – 10% of proceeds benefit EKARI. Visit our website for more ways to support our cause.

Website - www.ekarifoundation.org
Facebook - facebook.com/ekarifoundation
Twitter - twitter.com/ekarifoundation

looking ahead

2014 will be a time to reevaluate our Sponsor a Student Program with regard to how we select and retain students. We are confident that we will increase the 44% high school completion rate by providing those students who failed this past school year, as well as our current students struggling in their studies, with extra support including private tutoring sessions.



2014 will also be a year of expansion for the EKARI Foundation into the Phalombe community! We will launch our Adult Literacy Program in partnership with the local Phalombe district government in the spring to support 10 adult literacy courses including an estimated 200 adult learners.

We are currently fundraising for the first phase of our Building Program and hope to start construction of our Community Building in mid to late 2014 in order to offer our student and community programs to the entire community.

Our Belgian volunteers recently completed their field research for our Sustainable Livelihoods Program. Our goal is to commence the program in late 2014 after program development and fundraising activities.

In 2014, our current volunteer from Germany will focus on process improvement activities with Elias in our Phalombe office and remotely with Michelle. She will review and revamp our administrative policies and procedures as well as assist with program implementation on the ground in Phalombe.

A new EKARI volunteer from Seattle will conduct research in Malawi in the spring in order to expand our Health Education and HIV/AIDS Awareness Program's impact to local schools and communities.

We look forward to sharing our progress in next year's annual report!



Education for Students • Sustainable Livelihoods for their Communities



Photography by Michelle Bradley and Elias Makina

Graphic Design by Laura Heilstedt
laura.heilstedt@gmail.com