

# Shining Hope

**SHOFCO**

Shining Hope  
for Communities



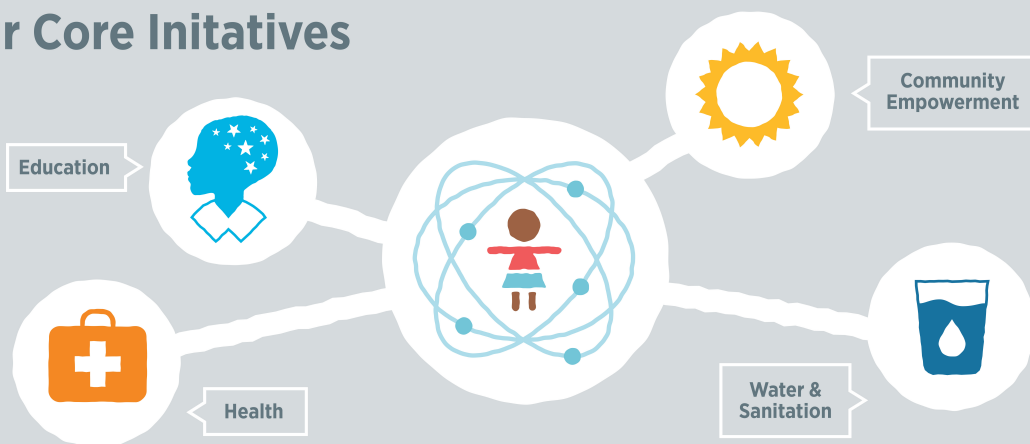
## SHOFCO Story

Kennedy Odede started SHOFCO in 2004 with passion, 20 cents, and a soccer ball. Growing up in Kibera, the largest urban slum in Africa, he experienced extreme poverty, violence, lack of opportunity, and deep gender inequality. Kennedy also witnessed persistent ingenuity, resilience, and hope within the people of Kibera. With the understanding that with hope comes opportunity, he launched a vision of transformative change at the grassroots level—starting with a free school for girls.

## Our Model

Shining Hope for Communities combats extreme poverty and gender inequity by linking schools for girls to a set of high-value, holistic community services for the urban poor. Through this strategy, we create transformative change across the informal settlements of Nairobi. In our model, a girls' school becomes a portal for large-scale social change. Through a demand-driven approach in grassroots development, our model extends beyond the schools for girls, broadening outreach by providing communities with integrated basic services through three other initiatives: health, community empowerment, and clean water and sanitation.

## Our Core Initiatives



## Initiatives

- **Education:** SHOFCO's innovation places free schools for girls in the center of holistic community services, allowing the school to become a portal for large scale social change.
- **Health:** Specializing in women and children's healthcare, our clinic provides free medical services, open to the entire community.
- **Community Empowerment:** Our community programs provide resources to further economic opportunity and advance human rights, creating space for individuals to pave personal paths out of poverty.
- **Water & Sanitation:** SHOFCO goes beyond clean, affordable water; our cutting edge bio-latrines, community toilets and hygiene and sanitation education initiatives nurture healthy, productive individuals.

## Impact

- SHOFCO members scored **17%** higher on the gender attitude scale than community baseline respondents in 2013. In 2012, there was no measurable difference.
- Our 4<sup>th</sup> grade students ranked **first place** in the district on their first government exam by a 50-point margin.
- **78%** of women involved in our Economic Empowerment Programs versus 51% in Kibera and 57% in Kenya have a source of income.
- **64%** of the Kibera community practices family planning versus 80% of SHOFCO members.
- **1,333** households (6,665 people) get their daily water at SHOFCO's clean water kiosks.

## Media

"[Shining Hope for Communities] is one of the most hopeful places I have ever visited."

– Nicholas Kristof

"Having had the privilege of spending so much time with Jess and Kennedy, it's impossible to imagine one without the other – and inconceivable they would be living anywhere else or doing any other work than the work they're doing, together, in Kibera."

– Chelsea Clinton

"This was the most extraordinary school I've ever seen. I hope everyone will be as moved as I was and support this amazing organization."

– Actress Olivia Wilde to People Magazine



Forbes CNN The New York Times

THE LANCET VOGUE nbc msnbc DAILY NATION