

GlobeMed
at Tufts



2012-2013

1st Quarterly Report

Table of Contents

Message from Co-presidents

Goals and Fundraising

Our Work

Semester Timeline

10,000 Promises

Our Project

Thank You

Our Board

Co-Presidents

Kanu Tewari & Hafsa Chaudhry

Directors of Communications

Michelle Shah & Marie Schow

Campaign Coordinators

Caitlin Dane & Malina Filkins

GlobalhealthU Coordinators

David Meyers & Rachel Weinstock

Director of Community Building

Kate Collins & Anushay Mistry

GROW Coordinator

Alon Slutzky

Director of Finances

Sally Pratt

Director of Development

Laura Corlin

Dear Friends of GlobeMed at Tufts,

As we round our final semester as Co-Presidents of GlobeMed at Tufts, we continue to be amazed and inspired by the hard work and solidarity of our Executive Board and Staff members. We cannot deny it was daunting to expand to a chapter of over 60 members within our first year of existence. However, it is largely because of the dedication of this large group of people that we have been so successful as a chapter this past semester. We have already raised 73% of our fundraising goal of \$6,480.00, equivalent to funds needed for the installation of 18 new solar panels to power on-site operations at Nyaya Health's Bayalpata Hospital.

On a partnership level, we have continued to strengthen our relationship with Nyaya Health. We have accomplished this through implementing a staff team solely dedicated to analyzing Nyaya's data and creating meaningful data briefs for use at Bayalpata. In addition, Nyaya Co-founder and former Executive Director, Dan Schwarz, gave an inspiring talk to our chapter about human rights in action through healthcare delivery in rural Nepal. Reflecting on his personal experiences in Nepal, he gave us a unique perspective on the impact on our efforts.

Looking forward, we are excited to see what our chapter will achieve alongside our ever-growing and evolving chapter. This next semester will be one of transition for GlobeMed at Tufts, and we are confident that changes in the upcoming months will provide solid ground for a strong and successful year ahead.

With lots of GlobeMed love,
Hafsa Chaudhry and Kanu Tewari



Our Goals...

Equal
Engagement

Large-scale
campaigns

Revamp
social media platforms

Enhance
community building

Our Chapter Fundraising...



\$79.00

Scarfs and Holiday Card Sales



\$1,538.00

AEPi Fundraiser Party



\$250.56

Color Wars



\$475.00

Giving Common Challenge



\$300.00

Newton Country Day



\$223.00

Cookies and Condoms Grams



\$500 for GlobeMed at Tufts, **\$500** for Nyaya Health
Global Population and Environmental Program Grant

Our Individual Fundraising...



\$715 from **13** donors
Laura Corlin's birthday

2013

\$375 from **7** donors
Malina Filkins's Holiday Wish

To Read More Details Visit:

<http://bit.ly/GMTuftsFinancials>

Our Work...

Communications

We now have...

190

likes on facebook

108

followers on Twitter

12

Wordpress blog posts

171-299

people viewing our
Facebook page weekly

And...

During the Chase Community Giving contest, our chapt was able to help Nyaya Health get over 20,000 votes!

Community Building Events...

E-board cooking Indian and Nepali food for dinner

Potluck dinner with staff and E-board

Wine and cheese night

Weekly dinners
Decoration making for campaigns and events

In GHU

we discussed...

Why do **human rights** exist?

Is **health** a human right?

All new: Data Team

The data team is the newest addition to our organization. Using the Bayalpata database on inpatient and outpatient information, the team has organized and compiled data briefs to enhance the Continuing Medical Education program at the hospital and support campaigns.

Topics included:

Pneumonia

COPD

Meningitis

Heart Failure

Preeclampsia

Age

Diabetes

Mental Illness



Our semester of events at Tufts....

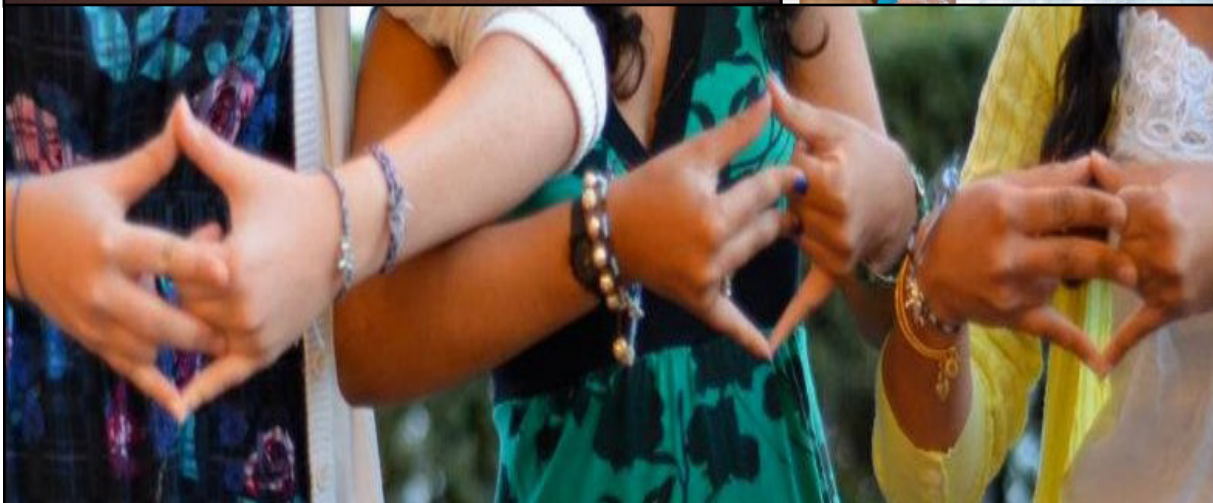
9/6 | Supported Nyaya Health in Chase Community Giving. They went on to win \$100,000 in grants!

10/19 | Sold Holiday Cards over parents' weekend to raise funds for Nyaya Health.

10/26 | Partnered with AEPI. They chose us as their charity for their semesterly fundraising party.

11/31 | Sold and delivered Cookie and Condom grams in honor of World Aids Day.

12/9 | Held our first Color Wars. We hope to make this an annual event, which will build our presence on campus.



10,000 Promises

GlobeMed at Tufts is committed to growing and evolving with Nyaya Health. We have many internal operational goals for the coming year and we have set a new challenge for ourselves

–10,000 Promises:

Spend 10,000 cumulative hours working for Nyaya Health this year

Spread Nyaya's message to at least 10,000 people in two years

Reach the \$10,000 annual fundraising mark in three years

– Our Progress:

7,919 cumulative hours worked

6,736 cumulative people reached

\$13206.87 cumulative dollars raised



Our Project...

This year, our chapter will be helping to fund Nyaya's Phase II Solar Power project that will provide the necessary power for the **new surgical center, microbiology lab, and blood bank**. These panels will power the emergency room, administrative offices, staff quarters, and microbiology lab. Additionally three members of our team, Alon Slutzky, Greg Zhang, and Malina Filkins will spend the summer in Nepal as interns working on projects which will be planned throughout the spring.



Raise \$6,480 for 18 solar panels



Help Nyaya Health Restore
the Right To Health of
270,000 Nepalis



Our Partner...

August 5th, we celebrated our one year anniversary in partnership with Nyaya Health! Nyaya Health's mission is to realize the right to health by delivering transparent, data-driven health care for Nepal's rural poor. Nyaya operates a hospital and community health program in Achham, a large district in Nepal.

\$0.50

Average Daily
Income in Achham

60%

of Children Malnourished
in Achham

101,000

Patients Treated by
Nyaya Health

A Big Thank You to Our Amazing Staff and Volunteers!!!

Adrienne Larson
Alex Boden Aradhna Agarwal
Awesta Yaqubi Chad Larcom Chris
Blackwood David Bass Ece Koçak Emily
Zhang Emma Wells Emma Rosenbluth Fariha
Choudhury Geetha Mahendran Ghali Armira Greg
Zhang Haleigh Williams Haley Bliss Sonya Bakshi
Hannah Collins Heather Ngai Tina Dong Nidhi
Chillara Patricia Solleveld Sara Taxman
Krishan Jeyarajaasingham
Si Min Yun Sam Lund
Jennifer Johnson Jessica Dimas
Johannes Oster Karen Chen
Taylor Kennedy
Priya
Kasia
Kathleen Li
Kian Tehranchi
Lexi Gilligan Lila Blackwell Morgan Jordan Naomi
Ali Meaghan McGoldrick Tzeidel Eichenberg
Vinay Srinivasan Maxine Lancelot Michael
Bird Hira Qureshi Ashley Stein Allison
Gram Nora Muller Rebecca
Frank Elana Micheals

Ban

Gawlas

Kayley Abell-Hart

Kimberly Ritraj Kristen Lueck