

# **Agricultural Secondary School**

Annual report July 2016 - June 2017



July 2017



## Contents

1. General information: .....	5
2. Objectives of the LAP: .....	5
3. Organization.....	6
4. Newly realized infrastructure between July 2016 / June 2017 .....	6
5. Personnel year 2016-2017 and plan for next year .....	7
6. Students school year 2015-2016.....	8
Number of students per class .....	9
Gender analysis:.....	9
7. Study program and results current year:.....	10
Results of the 4 <sup>th</sup> year: .....	10
Results of the CAL: .....	10
Bingo .....	10
8. Boarding school:.....	11
9. Parents: .....	11
10. Production of the LAP this school year: .....	11
Animals: .....	12
Beekeeping: .....	12
Agriculture and gardening: .....	12
Fruit trees:.....	12
11. Financial report 2016-2017 .....	13
Resources:.....	13
Expenses: .....	13
Results:.....	14
Evolution of costs per student per year:.....	14
12. Budget 2017-2018:.....	15

# Foreword

The LAP opened in 2011. At the beginning of school year 2016-2017 there were 215 students (107 girls and 108 boys).

This new school year has not shown improvement over the last year regarding percentage of students getting their end of first cycle exam (BEPC). We are very disappointed and can point out the following difficulties:

- After releasing 3 permanent teachers we replaced them by temporary teachers from the public school nearby. We will go back to more permanent teachers.
- We have seen a lack of leadership of our temporary director. We will have to replace him.
- Students do not really know why they are at the LAP or why they are studying. We will try to put them more in contact with the outside world via field visits and visitors of different background.

So far, we have not been able to link our school with a similar school in a French speaking country. It is still an important objective.

We are still very motivated to meet the challenges based on the feedback we have from the students and their parents.

A huge thanks to all who have made this possible.

Sincerely,

Hervé Millet

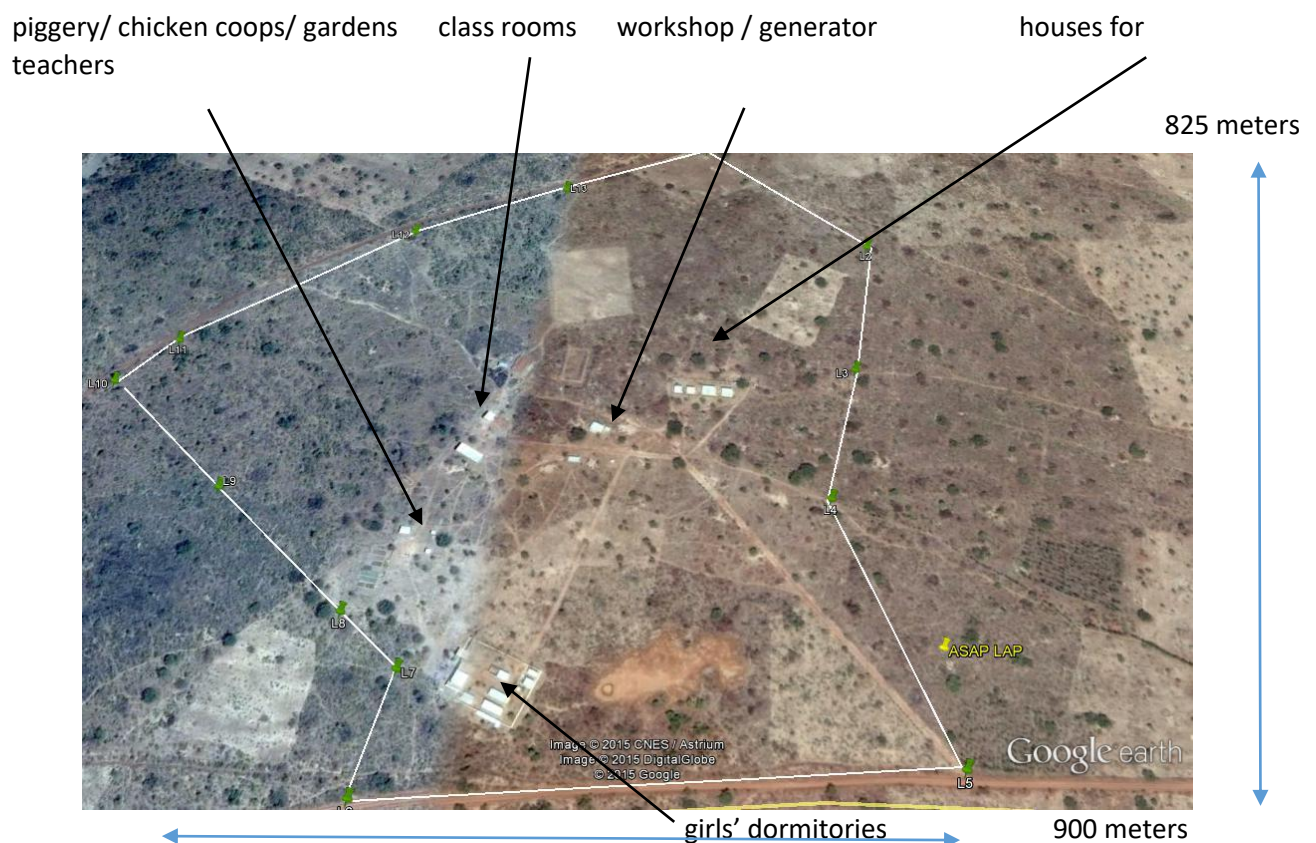
A handwritten signature in blue ink, appearing to be 'H. Millet', with a stylized flourish at the end.

## 1. General information:

- The secondary agricultural school called LAP has been created by the ASAP foundation. It opened in October 2011. Since April 1<sup>st</sup> 2015 the LAP is under the control of a local association called ALAP (Association pour le LAP).
- Location: located on 42 hectares of land in the village of Oualana in Burkina Faso. It is situated at 52 km from Bobo Dioulasso.
- Officially approved by the ministry of education.
- All students come from the 11 villages where the ASAP foundation is active.

## 2. Objectives of the LAP:

- Offer quality education to children coming from poor families
- Offer an education adapted to the needs
- Offer an education which helps to identify and develop the strength of the students
- To be sustainable with the donations of the sponsors, the fees paid by the parents and the activities of the LAP



View of the LAP with realizations until the end of 2013.

### 3. Organization

In April 2015, the local “Association for the LAP” (ALAP) took over the responsibility of the LAP. ALAP was created in order to make the LAP independent of ASAP Burkina.

The board of ALAP is shown in the table below.

Position	Name/First name	Address	Job
President	Millet Hervé	3492 Bobo Dioulasso	Engineer
Vice-President	Teri Odile	3492 Bobo Dioulasso	Project manager
Treasurer	Millogo Jean Francois	3492 Bobo Dioulasso	Retired
Vice Treasurer	Berehoudougou Rock Parfait	3492 Bobo Dioulasso	Accountant
Secretary	Sanou Fleur Elza	3492 Bobo Dioulasso	Secretary
Vice Secretary	Kietega Solange	3492 Bobo Dioulasso	Nurse

### 4. Newly realized infrastructure between July 2016 / June 2017

Construction of one room dormitory for the girls.



Front of the dormitory



Side of the dormitory



Back of the dormitory



Other side of the dormitory

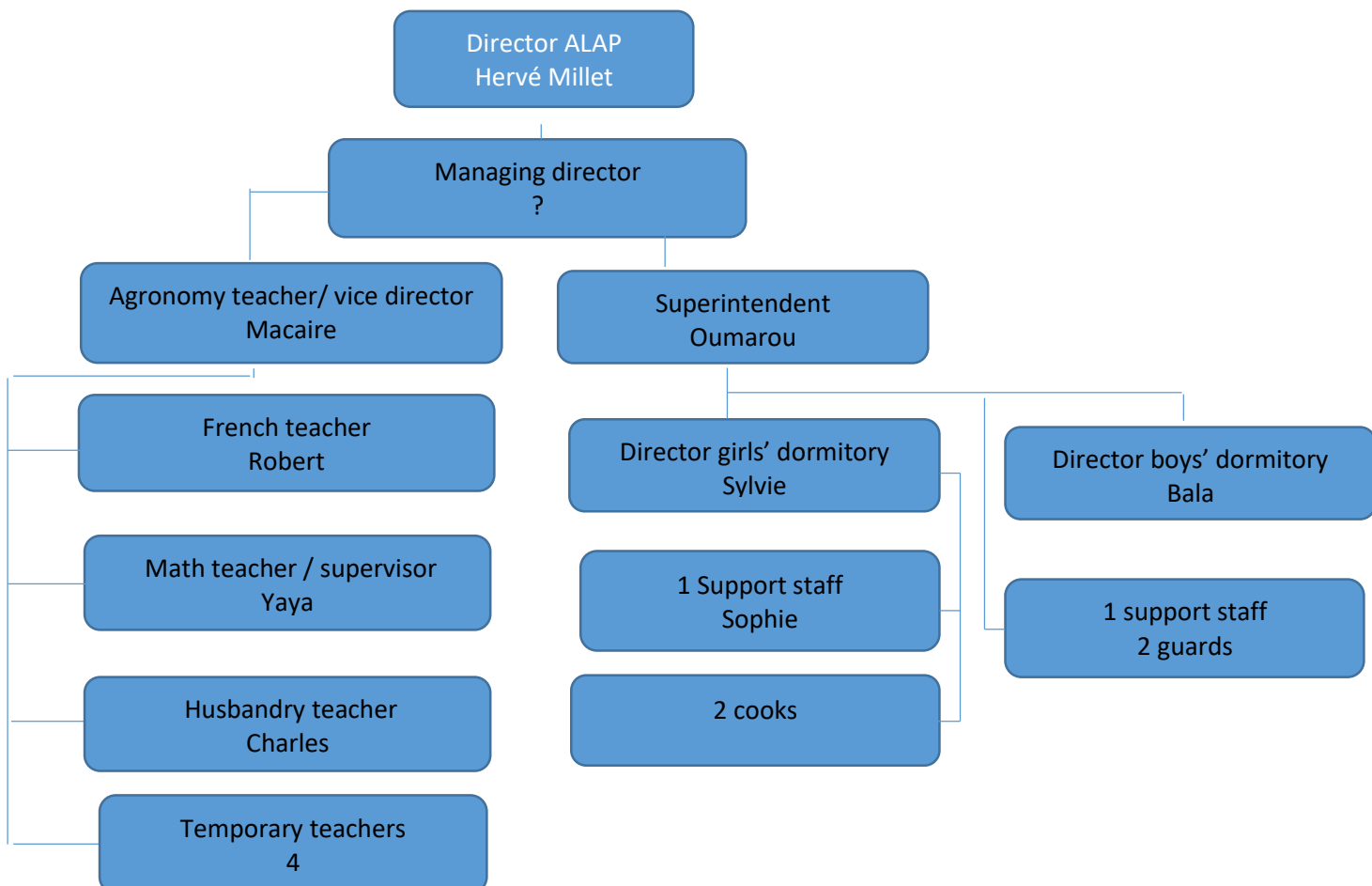




We also improved the ovens used for cooking the meals of the students. With the help of a mason from Benin and using termite hills ground, we were able to save at least 30% of the wood we need for cooking.

The total amount invested in infrastructure until July 2017 is 780.000 euro.

## 5. Personnel year 2016-2017 and plan for next year

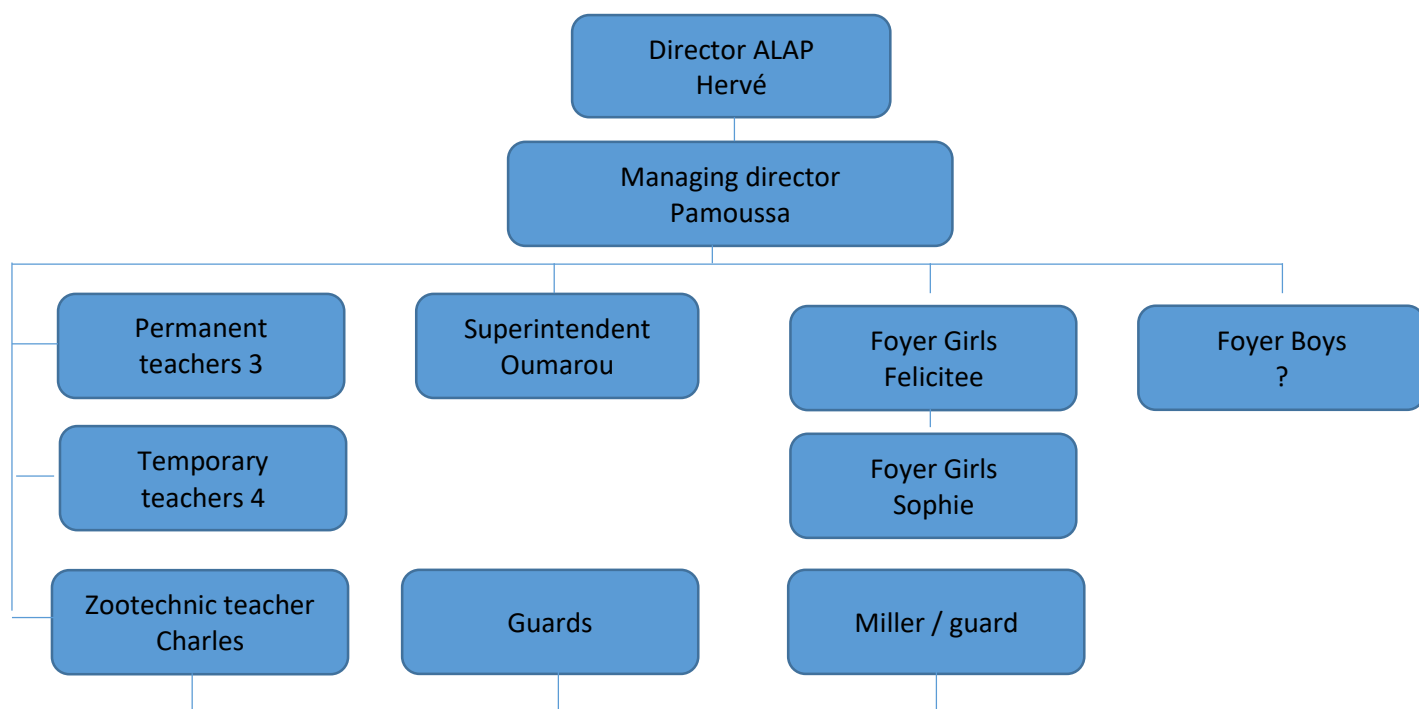


We had 10 personnel on permanent basis for the school year 2016-2017.

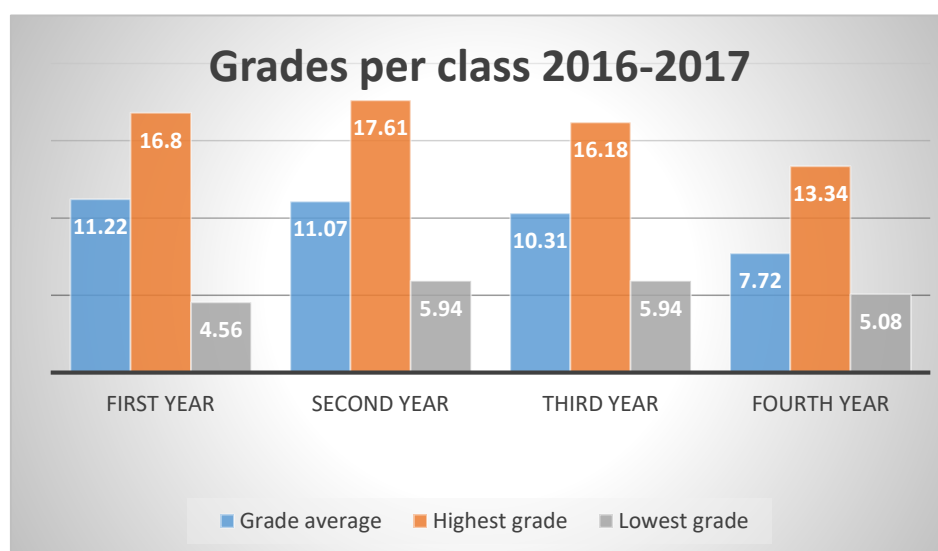
**Comments on teachers:** the school is rather remote (52km from the city of Bobo Dioulasso). Permanent teachers have to live on the compound. It is not easy to find experienced teachers who accept to come to the LAP as permanent teachers.

We have been able to find a new director who will start on August 20<sup>th</sup> 2017.

The new organogram for 2017-2018 will be:



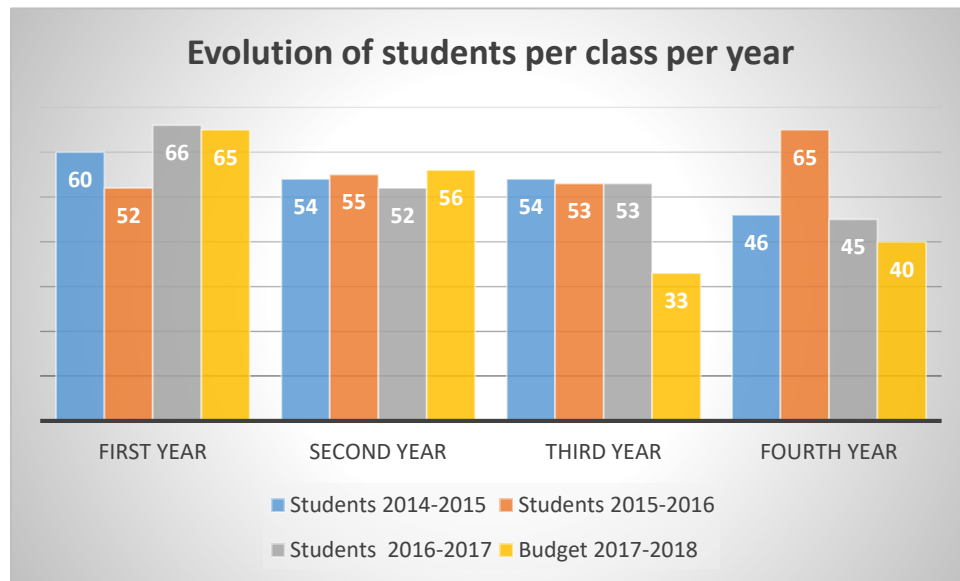
## 6. Students school year 2015-2016



In comparison with 2015-2016, the grades in school year 2016-2017 went down a lot. This can be explained by a lack of discipline among the students but also by a grading method used by the temporary teachers we had during this year. This is particularly true for English and History / Geography. These teachers think that fear is good among students and that it is better to punish than appreciate. Unfortunately, we have not been attentive enough to this situation.



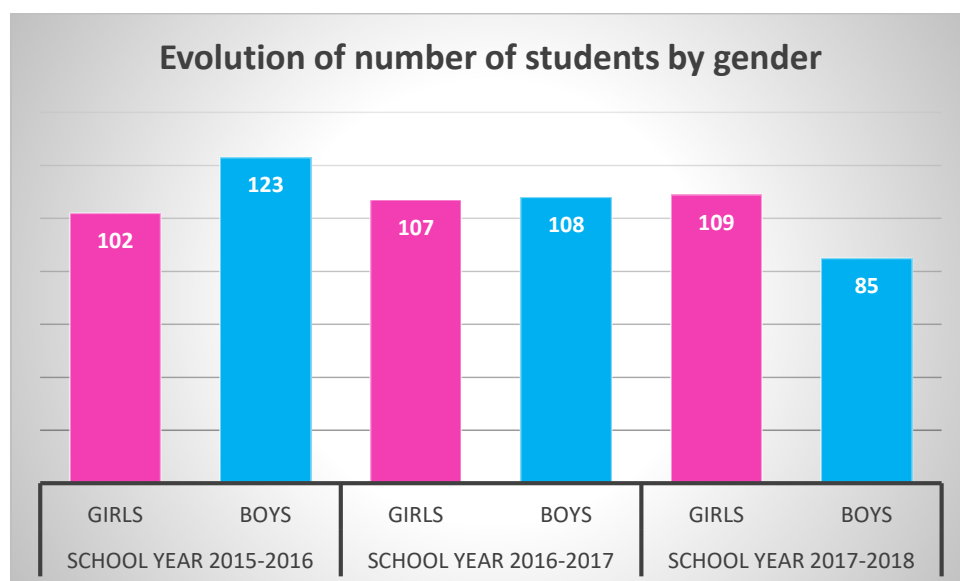
## Number of students per class



The impact of the grades mentioned above can be seen in the evolution of students per class through the years. More than 40% of the students in the second and third year did not make it to the next year. In year 2015-2016 and for the coming year we have accepted that students with a reasonable grade average could redo the last year if they did not get their diploma.

## Gender analysis:

Our objective is to have at least 50% girls' students.



We can see that the percentage of girls is increasing each year. Parents see the LAP as a safe place to have their daughters. In addition, the boys of the 3<sup>rd</sup> and 4<sup>th</sup> year were living off campus this year. The coming school year all boys will be back on campus again.



## 7. Study program and results current year:

For school year 2016-2017 we did not open the second cycle to bring the students to an agricultural baccalaureate in 4 years. Taken into account the poor results we have so far, we feel we need to have a proper management structure in place before to open this new cycle.

In June 2017, the students went through an in-house exam called the CAL (Certificat Agricole du LAP). We want to make sure that the students have a certification showing what they have done in technical studies. It is an average of 3 grades (1/3 from general studies, 1/3 for agronomy and 1/3 for husbandry). For agronomy and husbandry 50% of the grade was theoretical and 50% practical).

### Results of the 4<sup>th</sup> year:

Only 29% of the students were successful to the national exam called BEPC. Even if the local rural schools near the LAP had only 10% success, our result is still far from our objective of 80%.

From the 13 successful students 8 were boys and 5 girls. This also shows a lack of discipline at the girls foyer.

Lack of leadership, problems of communication and poor teachers are the main reasons for this situation. We will have a new director for the coming year and replacement of many teachers.

### Results of the CAL:

This new certification took place in June. Out of 52 students, 41 got their certificate.

### Bingo

The 14 students attending the agricultural school of Bingo passed an exam called the BEP. Out of the 14, 13 got their diploma. Congratulation to them. They will stay in this school for another 2 years to attend to pass their agricultural baccalaureate.



During the vacation, some of them are working on ASAP farm in Sokourani.

## 8. Boarding school:

In the school year 2016-2017, all the girls and only the boys of the 1<sup>st</sup> and 2<sup>nd</sup> year were boarded. This seems to have created some difficulties of control and follow up. We will go back to an 100% boarding for the coming school year.

The dormitories are a place where the students learn other things than in the class room. We will try to implement some programs to develop activities such as knitting, sewing, cooking, music, dance...



## 9. Parents:



The parents' association consists of 2 representatives per village. There were 4 meetings this year with the parent's association and the LAP personnel. We have seen that these meetings have been used mainly as a means of communication rather than a participative tool for the LAP's development.

For the coming year, we will need to have those parents more involved in the decisions taken.

## 10. Production of the LAP this school year:

The production comes from the fields, the vegetable gardens, the breeding of pigs, cows, chickens and beekeeping.

The purpose of these activities is mainly to teach the children how to grow vegetables and how to breed animals. Most of the production is used in the preparation of the meals for the students. We have also seen that the examples shown at the LAP generate some economical activities in the villages: gardening, beekeeping.



### Animals:

- **Pigs / cows:** we have scaled down the activity with the pigs and started activity with cows. This activity is still with a loss of 1.286 euro



- **Chickens:** For this activity, we have seen a large improvement. The activity is balanced for the year. Each student that passed the CAL successfully has received a chicken to take home.

**Beekeeping:** we have added 10 new hives this school year.

The harvest was good in April 2016. The result for this activity is 86 euro.

### Agriculture and gardening:

- **Agriculture:** we have exploited 7 hectares in 2016. The fields were not properly cleaned from weeds bringing a loss for this activity of 897 euro
- **Gardens:** this activity brought a small loss of 80 euro for this year. Since vegetables are used for the meals of the children, we think that not all vegetables produced were accounted for.



### Fruit trees:

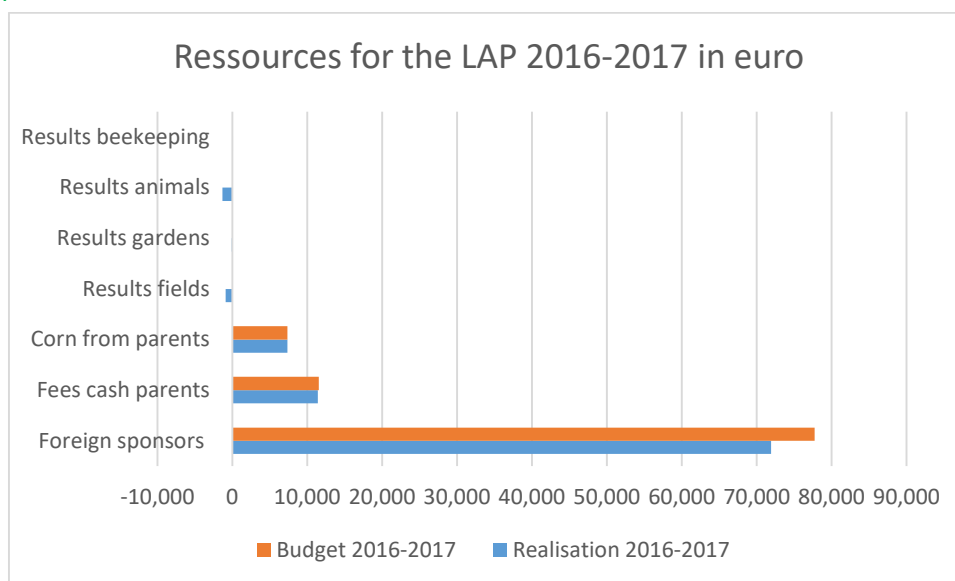
In June 2017, we have planted another 100 cashew nut trees. This allows us to exploit land that is not very favorable for cultures such as corn, sesame, soy...

This year we also taught the students of 3<sup>rd</sup> year how to graft a mango tree. Successful students could take the tree with them back home.



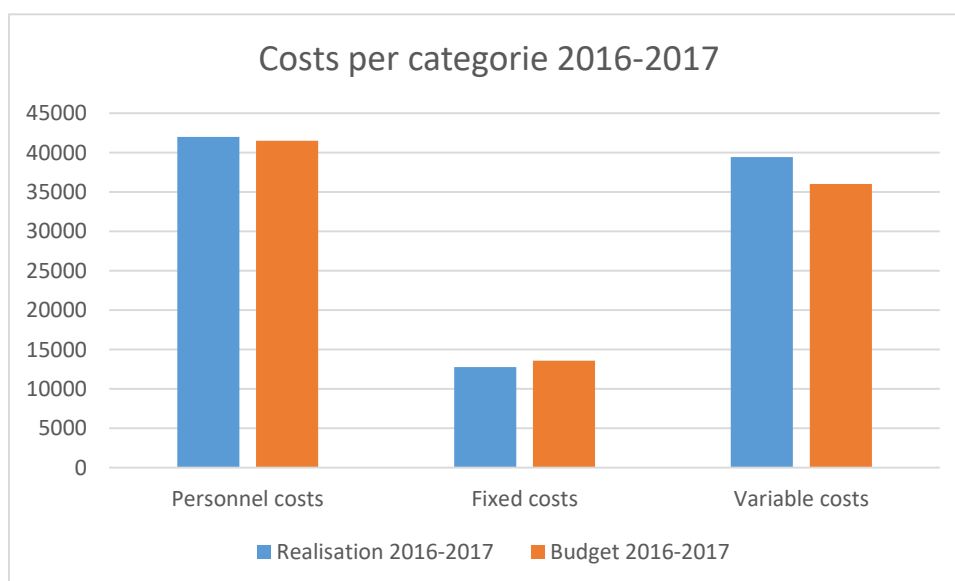
## 11. Financial report 2016-2017

### Resources:



Income for the LAP was 8.134 euro less than budgeted. This is mainly due to a lack of sponsors funding and loss in animals and field activities at the LAP.

### Expenses:



**Personnel costs:** costs were 498 euro higher than budgeted. This is mainly due to more temporary work force for maintenance at the LAP.

**Fixed Costs:** the fixed costs were 719 euro lower than budgeted. We had a higher cost in fuel and small equipment. Generator was used more to grind corn, but other fixed costs were lower than budgeted.

**Variable costs:** the variable costs were 3.410 euro higher than planned. Higher costs were for maintenance 4.982 euro and meals for the students 4.043 euro. Lower costs were for school supplies 2.329 euro, hygiene and health costs 1.252 euro and 1.455 in various fees.

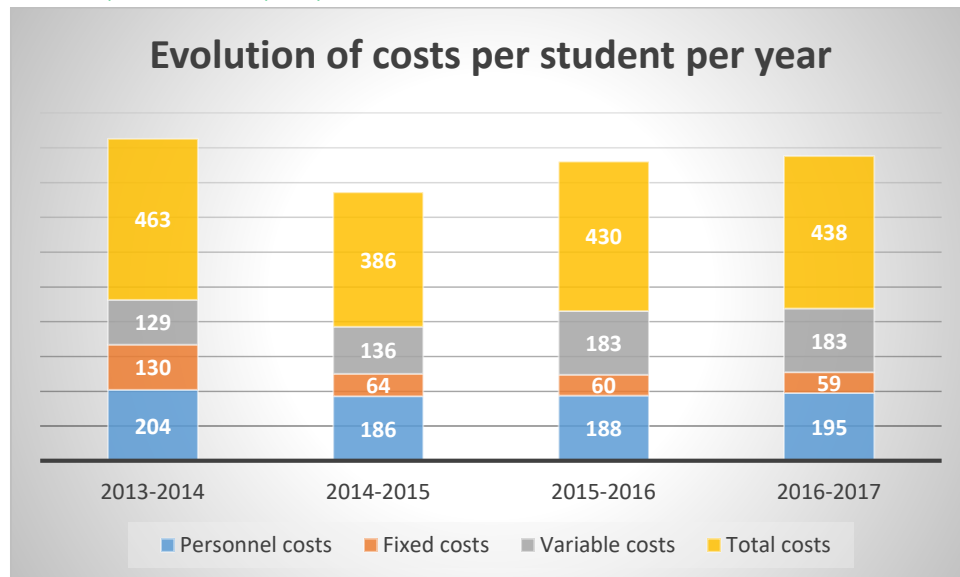
### Results:

The total income was 88.558 euro versus a budget of 96.691 euro.

The total expenses were 94.215 euro versus a budget of 91.107 euro.

The results for year 2016-2017 was a loss of 5.657 euro. This lost was compensated by the positive results of the previous 2 years.

### Evolution of costs per student per year:



Personnel costs increased in year 2016-2017, the rest of the costs are in line with budget figures.





## 12. Budget 2017-2018:

INCOME	Realization 2016-2017	BUDGET 2017-2018	Remark
Foreign sponsors	71,958	72,680	Extra donation of 5.000 euro above the sponsors
Fees cash parents	11,424	10,046	Less students
Fees corn parents	7,353	8,611	All students' boarded
Results fields	- 897	-	
Results gardens	- 80	145	
Results animals	- 1,286	-	
Results beekeeping	86	84	
<b>Total income</b>	<b>88,558</b>	<b>91,565</b>	
FIXED COSTS	Realization 2016-2017	BUDGET 2017-2018	
SALAIRE			
Permanent teachers	23,295	26,004	New director
Temporary teachers	13,622	9,384	Less interim teachers
Interim personnel	-	1,292	Support to operations
Social charges	3,697	4,161	
Personnel insurance	1,142	1,344	
Recruitment	250	153	
<b>Total personnel</b>	<b>42,006</b>	<b>42,336</b>	
FIXED COSTS			
Telephone /internet	1,012	916	
Electricity/ diesel generator	5,969	6,107	
Shipment	829	916	
Travel costs	712	733	
Accounting costs	916	916	
Training	47	305	Training for generator
Bank costs	182	183	
Teacher supplies	576	550	
Small equipment	1,974	1,527	
Part-time	65	-	
Other costs	491	489	
<b>Total fixed costs</b>	<b>12,773</b>	<b>12,641</b>	
VARIABLE COSTS			
School supplies	1,869	2,443	
Maintenance buildings	2,345	1,832	
General maintenance	910	916	
Maintenance generators	2,914	1,832	
Computer maintenance	960	916	
Water maintenance	1,076	1,374	
Motorbikes maintenance	136	366	
Electricity maintenance	1,738	1,221	
Fees	427	427	
Insurance students	-	144	
Insurance Motorbikes	98	98	
Student meals	20,073	17,557	
Registration fees	369	427	
Uniforms	2,535	2,214	
Costs Parents' association	350	366	
Hygiene	1,988	1,756	
Medical costs	1,647	1,756	
<b>Total variable costs</b>	<b>39,436</b>	<b>35,646</b>	
<b>TOTAL EXPENSES</b>	<b>94,215</b>	<b>90,623</b>	
<b>RESULT</b>	<b>(5,657)</b>	<b>943</b>	

The challenge is still to each year find new sponsors for the students. The LAP has not been able yet to build a reserve to cover costs in case of need. For this coming school year, we will need, same as for last year, an extra 5.000 euro in revenue. Costs themselves are well under control.





**Association pour le LAP (ALAP)**

BP 3492

Commune rurale de Léna

Village de Oualana

Burkina Faso

Tel: + 226 20980600

Email: [contact@asap-foundation.org](mailto:contact@asap-foundation.org)

Website: [www.asap-foundation.org](http://www.asap-foundation.org)