

Annual report July 2022 - June 2023



July 2023

FORWORD

In Burkina Faso, secondary education in rural areas, in view of the weak support provided to parents, remains a major challenge for stakeholders. Moreover, faced with the poverty of almost all rural families, it is practically impossible for parents to fully ensure the schooling of their children.

On the strength of this observation, the Private Agricultural Secondary School (LAP) of the ASAP foundation, created more than 10 years ago, helps to best support the villagers in the education of their children and thus offer students a chance of success in active life.

To achieve these objectives, the LAP employs 23 permanent staff, all residing within the establishment in rural areas (Léna) with 11 temporary teachers from other establishments.

The 2022-2023 school year started with 300 students, 155 girls and 145 boys.

With everyone's efforts, the national exam results are acceptable. The objectives of the 6th and 8th years are achieved (at least 80% success). Efforts still need to be made to bring 4th year's pupils up to an acceptable level.

The two areas on which we want to focus are:

- A more participatory and appreciative approach from our staff;
- A more professional listening to the personal problems of the students.

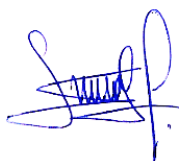
There are always a lot of difficulties-for the payment of tuition fees for parents of students. This is linked to the current high cost of living in Burkina. The LAP's high spending on merchandise purchases confirms this. This situation creates cash flow problems for the LAP.

We say thank you to all the people and organizations who continue to support us in our project. A special thank for the Van Kesteren foundation , the A Petits Pas association and the ASAP foundation.

Cordially,

Fidèle TIANHOUN

LAP Director



Contents

GENERAL INFORMATION	5
Objectives of the LAP	5
Location of the LAP	5
Organization	6
Parents' association	6
STUDENTS	7
Results of the students 2022-2023	8
Planned students for the year 2022-2023:	12
Health of the students :	12
PERSONNEL	13
Organization for the school year 2022-2023	13
Development of the personnel:	14
Teaching approach:	14
Follow up on students coming out of the LAP:	14
LIVING CONDITIONS AT THE LAP	15
Students	15
Permanent staff	15
Communication at the LAP:	16
Cooking for students:	16
WORKSHOPS AT THE LAP	16
Gardens production:	16
Animals	17
Beekeeping	18
Agriculture	18
Production unit for animal feeds	18
Production unit for compost:	18
INFRASTRUCTURES and EQUIPMENT	19
Realizations in 2022-2023	19
Plan for the new school year:	19
FINANCIAL REPORTING 2022-2023	20
Resources	20
Running costs:	20
Infrastructure costs:	21
Budget 2023-2024	21
LAP WATER AND ENERGY:	22
Energy:	22
Water:	22
COMMUNICATION	23
MAIN SPONSORS	23

Organization

The LAP was officially opened in 2011. In April 2015, the local association “Association pour le LAP” (ALAP) took over the management of the LAP.

The ALAP board is shown in the table below.

<p style="text-align: center;">ALAP President : Hervé Millet Secretary : Odile Sawadogo Teri Treasurer : Félicité Balo</p>

Parents' association

Students are selected from the 12 villages where ASAP is active and from refugee families. Each village and UNHCR has 2 representatives in the parents' association.

The parents' association has met 3 times this year. All parents are invited to the LAP at the end of each term. The role of the parents' association is to communicate with the villages, to discuss problems related to the students and their studies with the board of directors of the LAP. We have seen some villages lacking in their representation and we will have to temporarily stop recruiting from them.



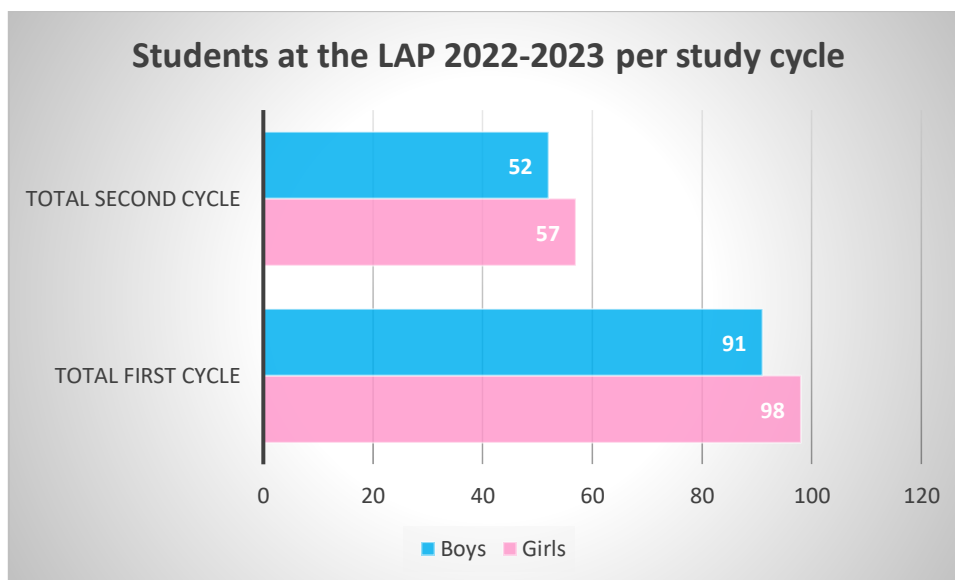
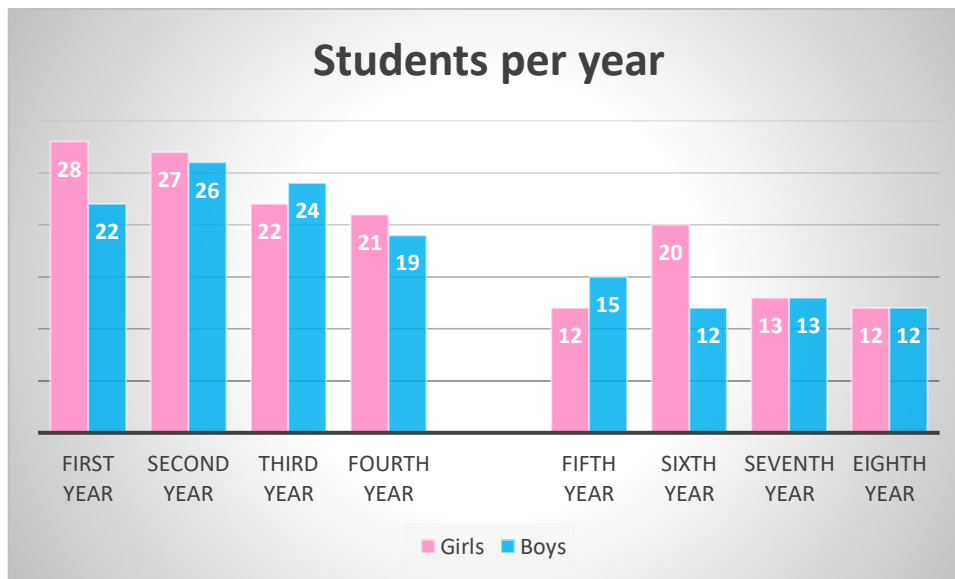
Meeting of the parents' association 2022-2023

STUDENTS

The students are recruited, via a test, from the 12 villages where ASAP is active and via UNHCR Burkina.

This year there were no candidates from UNHCR. We have selected only 50 new students for the first year when our objective was 60. The number of candidates was low and our test was made a little bit harder.

Number of students per class 2022-2023



Analysis per gender

For the school year 2022-2023 52% of the students were girls.



Results of the students 2022-2023

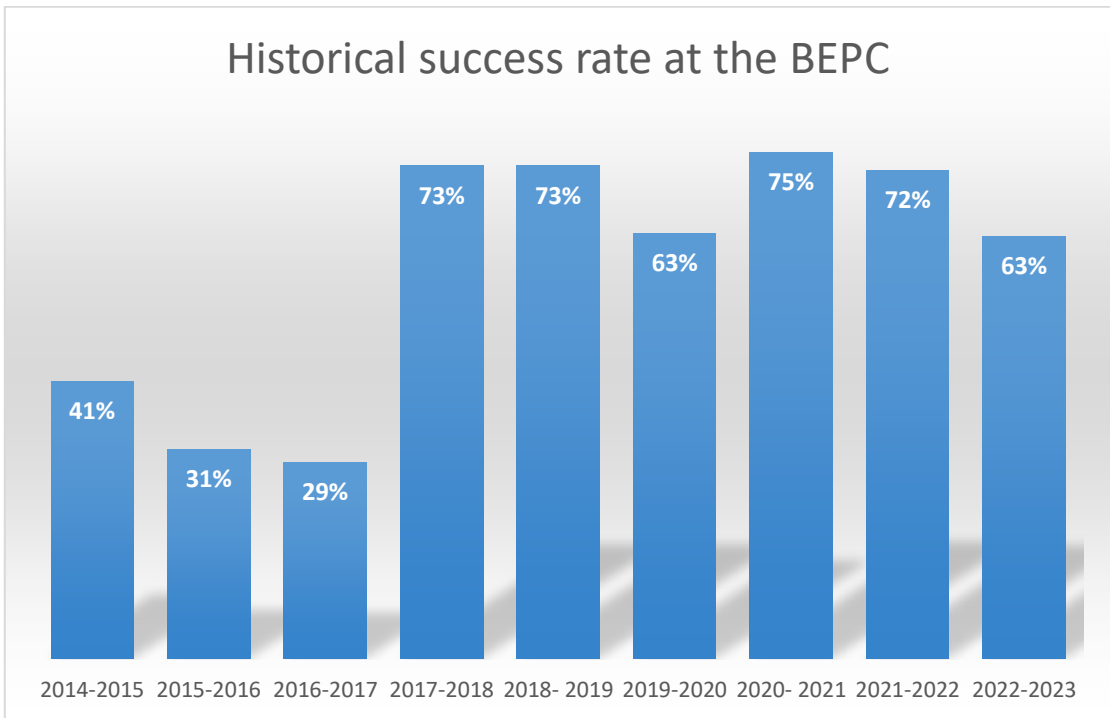
Students coming from different primary schools come to the LAP with different levels in French and Math. The first 2 weeks of the first year students have been dedicated to working on their French and Math in a ludic way.

Only 3 students of the first year will not pass in the next level. All the students of the second and third year are passing. This is a much better result than last year.



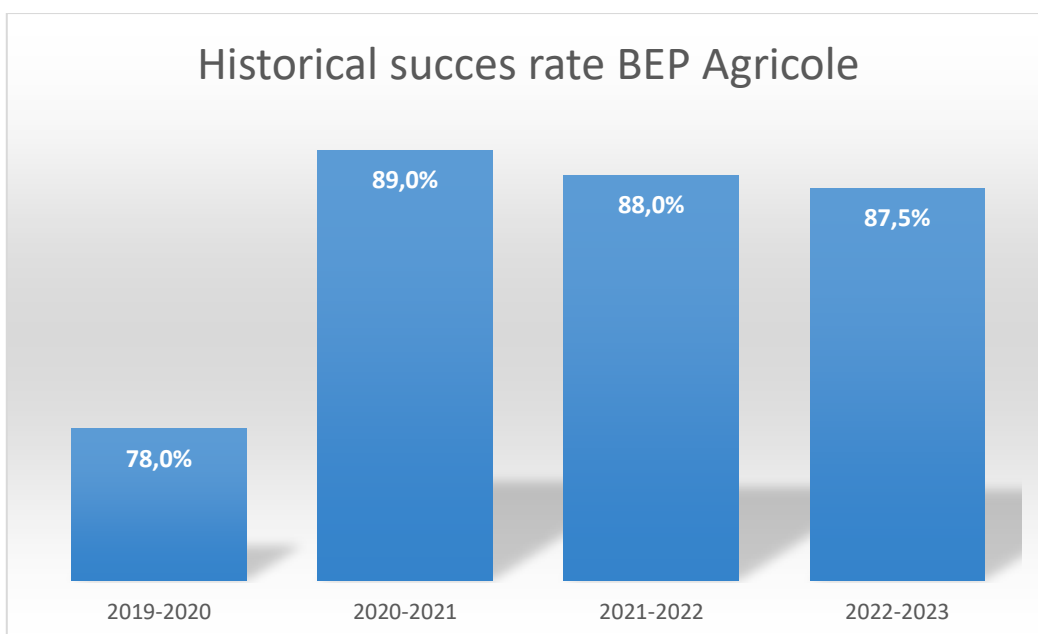
BEPC exam (4th year students):

All 40 students of the 4th year have taken part in this exam. The 63 % success rate (67% for the girls and 58% for boys) is far from our objective of 80%. Part of the difficulty is the motivation of the students who do not have a “dream” for their future.



BEP Agricole exam (6th year students):

All 32 students of this class have taken part in this exam. The success rate has been 87,5% (85% for the girls and 92% for the boys). This is a good result in line with the previous year.



BAC PRO Agricole exam (8th year students)

All 24 students of this class (12 girls and 12 boys) passed this exam. The exam took place very far from the LAP and students had to sleep in classrooms of a primary school.

All the students got their diploma, a fantastic result for the second group coming out of the LAP.



Sports competition:

18 students (8 girls and 10 boys) have taken part in a qualification round of the athletic inter schools competition. Fifteen were qualified for a following round. Finally 3 boys and one girls could participate to the regional final.



Driving license (7th year students)

From the 26 students of the 7th year 23 got it immediately. This will be an asset for them when looking for a job.

Planned students for the year 2022-2023:

	Girls	Boys	Total
1st year	30	30	60
2nd year	26	21	47
3rd year	27	26	53
4th year	28	27	55
total 1st cycle	111	104	215
BEP 1	17	18	35
BEP 2	11	13	24
BAC PRO 1	17	16	33
BAC PRO 2	13	13	26
Total 2nd cycle	58	60	118
Total	169	164	333



Health of the students :

There is a nurse at the LAP who looks after the health of the students. The main health problems are malaria, menstruation pain, internal and external parasites. Per month the infirmary has an average of 150 visits, 50% girls and 50% boys.

All the students are vaccinated for meningitis.

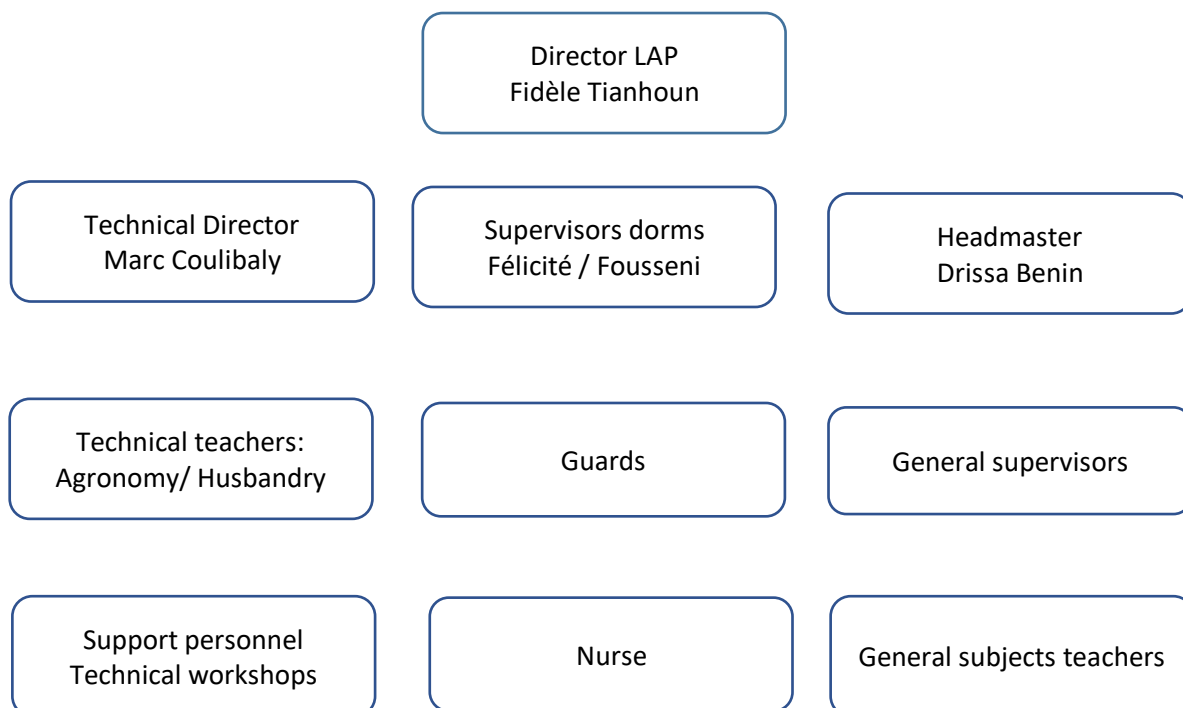


We are looking for a consultant who can come on a regular basis to listen to the students. It is difficult for the students to communicate with the personnel of the LAP about personal problems (at the LAP or in their families).

A neutral person who listens to the students can help them to open up and hopefully decrease the pressure they might be feeling.

PERSONNEL

Organization for the school year 2022-2023



In June 2022 he LAP has 23 permanent people on its payroll for 298 students.



Development of the personnel:

In order to keep the personnel we have at the LAP, it is important that they can develop.

Fidèle Tianhoun (LAP director) and Marc Coulibaly (Technical director) are both working on a doctorate.

In October the French, Math and Husbandry teachers have started a master on line in their discipline. The quality of the internet (satellite antenna) allows us to propose this. The costs of the master are shared between the teachers and the LAP.

Each year each employee has an evaluation from his supervisor. During the evaluation we will look at the training needed and wanted by the personnel and select some development projects.

Teaching approach:

The approach for teaching in Burkina is neither participative nor appreciative.

At the LAP we have been encouraging a participative approach. The implementation of this method is slow. Regarding the appreciative approach, it is almost not existent.

Teachers are putting pressure on the students by giving them lower grades in exam years. This creates stress for the students, especially for the girls.

We will invest in training our personnel to be more appreciative in their approach.

Follow up on students coming out of the LAP:

From the first 20 students coming out of the LAP with a BAC PRO Agricole, 16 are following studies at the university, 3 are working in farms and 1 did not communicate on what he does.

A WhatsApp group has been created to keep the communication open with those students.

LIVING CONDITIONS AT THE LAP

Students

All the students are fully boarded. They receive 3 meals per day. Boys and girls each have their separated quarters. The age of the students varies between 12 and 23 years old.

The challenge is to find the right balance between freedom and control, studies, and extra-curricular activities.

Students have the option of returning home on the last weekend of each month. They have the normal vacations at the end of the first and second term and at the end of the school year.

We will have to find ways to give a little more freedom to the older groups than to the younger ones. Second cycle students have Sunday outing rights. They have tracksuits that they must wear and they must go out in groups of at least 3.

The students are not allowed to have mobile telephones on the grounds of the LAP.



A day of a student at the LAP

Permanent staff

The houses provided to staff living at the LAP are of very good quality. One new house has been built in 2022 and a rec room for the permanent staff has been completed. .



This teachers rec room is mainly used to eat and to watch television. The teachers manage the foyer and pay somebody who is cooking for them. This allows the teachers more free time between lectures and a possibility to communicate during the meals.

Communication at the LAP:

An internet connection is made via a satellite. A router allows having Internet at the level of the classrooms, library, computer rooms, teachers' room and offices.

We are working to get an antenna which will help to have internet at the level of the teachers compound.

Cooking for students:

The LAP uses 6 ovens to cook the meals for over 300 students. In this school year we have been using gas instead of wood for the cooking. It is more ecological and it is also cheaper.

WORKSHOPS AT THE LAP

We have several workshops at the LAP used to teach the students and give them some training on entrepreneurship: gardens, unit of production of animal feeds, unit of compost production, chicken, cows and pig breeding.

We are having difficulties with the management of the production units regarding the buying of input and sales of the products. Teachers and students do not really have the time and maybe lack of competence for the purchasing and the selling. We are looking at recruiting a "business manager" who will take over those tasks. The production will still be made by the students under the supervision of their teachers. This new person will also train the 2 last year's students.

This person will also supervise the planned moringa production unit and the vegetable production in greenhouse.

Gardens production:

The purpose of these activities is mainly to teach children how to grow vegetables. Most of the production is used in the preparation of the meals for the students.

There are 6 gardens from which 2 are equipped with a drip irrigation system. Each garden is assigned to a class and each student has his own plot to work on.



Animals



We have got 3 calves this year.



The chicken breeding was good this year and most of the chickens will be sold by the end of July 2023.



The pigs we breed at the LAP are the Large White.

Beekeeping

We have a total of 40 beehives at the LAP. We harvested 215 kg of honey this year, this is more than double of the previous years' production.

Agriculture

in 2023, we will exploit 10 hectares: corn, beans, lentils, okra and hibiscus. All the production will be used for student meals.

Production unit for animal feeds

The 7th year students manage this production unit. The profit of the unit will be used to fund the future driving license costs. It was started at the beginning of 2021. Unfortunately we have not been able to make a profit with this unit. This is one of the reasons we need a "business manager".



Production unit for compost:

This year we have started to produce compost in a small industrial way. The plan is to produce enough compost for the fields of the LAP but also to be able to sell some to local farmers.



The compost unit building has a zone to produce the compost, a drying area and a storage area.



INFRASTRUCTURES and EQUIPMENT

Realizations in 2022-2023

This school year we have completed the teachers' refectory and the compost building. One house for a teacher planned for this school year will be built a bit later following some difficulties with our contractor.

We also added some agricultural tools including a tiller and a destemmer.

The investment at the end of 2022 for buildings and equipment at the LAP is 1.170.000 euro

Plan for the new school year:

We would like to add for this new school year: one additional house for teacher, one green house and a moringa garden, both with drip irrigation systems.

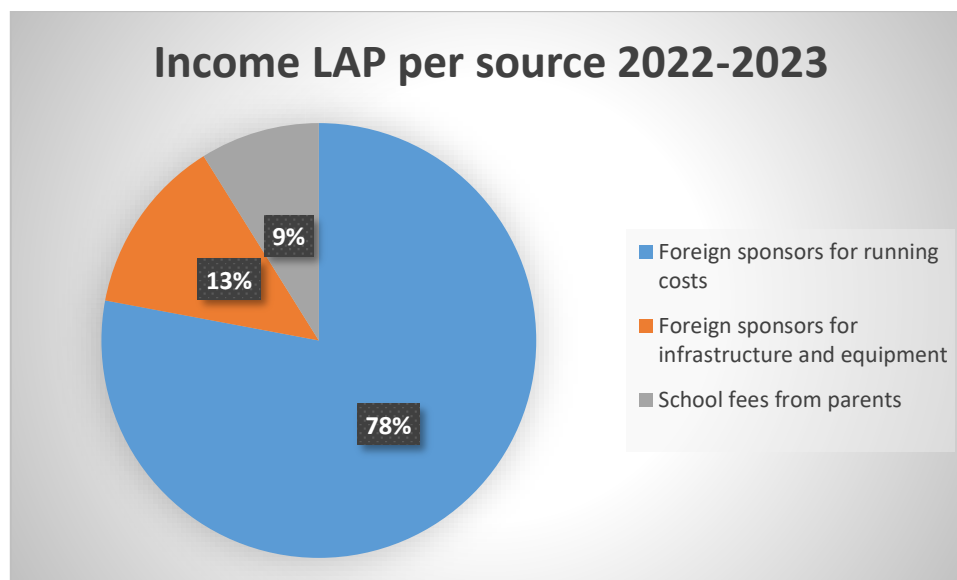
We also need some equipment: a new tractor and accessories.



FINANCIAL REPORTING 2022-2023

Resources

The total amount of funds collected for school year 2022-2023 was 234.080 euro.



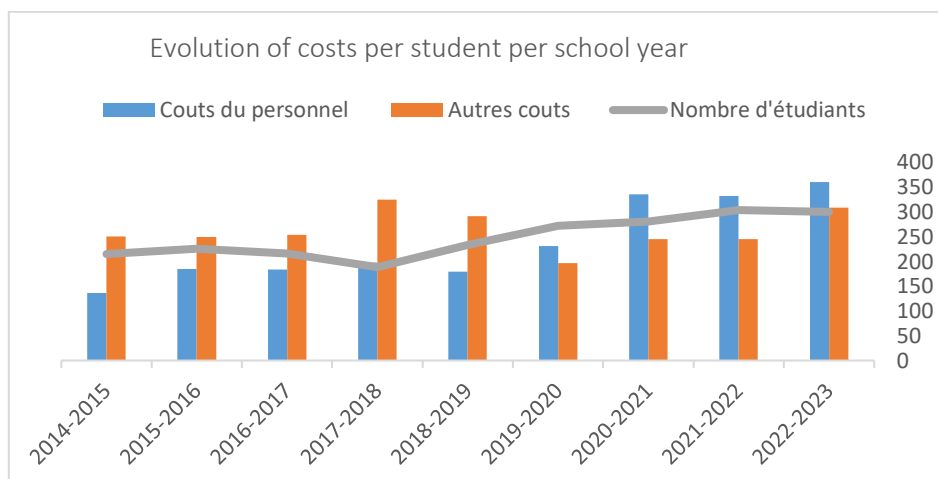
Comments:

The parents' participation, which is part in cash and part in corn, is still very difficult to collect.

We have taken some measures to either collect the missing participation or to not take back the students with a backlog.

Running costs:

The running cost for school year 22-23 were 199.239 euro. The personnel costs have increased of 8% but the other running costs have increased by 26%.



Personnel costs increased due to the addition of one staff and:

- Replacement costs of our nurse who had an accident
- Higher costs for the master on line for 3 teachers
- Higher amount to be paid to the National Social Security

The other running costs increase over last year mainly comes from costs for food for the meal of the students. General maintenance costs jumped 400% over budget due to replacement of batteries for our solar system not budgeted.

Costs of the driving license for the students of the 7th year was also not budgeted.

Infrastructure costs:

Spending in infrastructure and equipment in 2022-2023 were of 24.774 euro this school year.



Budget 2023-2024

Revenues for running costs:

Those revenues come mainly from sponsors and from the school fees paid by parents. The number of students in this new school year will increase by 10%.

The budgeted income needed is of 222.000 euro (176.000 from sponsors and 46.000 from parents).

Running costs:

Running costs are budgeted to 222.000 euro, 10% higher than in the previous year. The salaries will be increased on average by 8%. The minimum salary has been increased from 30.000 (46 euro) to 45.000 FCFA(69 euro) per month in Burkina.

We are planning the recruiting of one additional person to take care of the “business” of the LAP.

Planned infrastructure:

We are planning a budget of 68.000 euro.



LAP WATER AND ENERGY:

Energy:

We have been able to equip all the buildings with solar panels and batteries. This has allowed us to make less use of the generators. However the batteries we buy locally last only 3 to 4 years. We have 95 installed batteries, some since 5 years. The replacement budget of the batteries comes from the saving made by using less fuel for the generators.

Water:

The water comes from 3 water wells. Two are connected to two water towers with a total of 32 m³. The third well is connected to a water tower with 10m³.



COMMUNICATION

Our main communication tool is the website of the LAP. We publish an annual report which is loaded on this website.

Since last year we also use Instagram for communication.

On the Global Giving site we also make a quarterly report for the LAP projects.

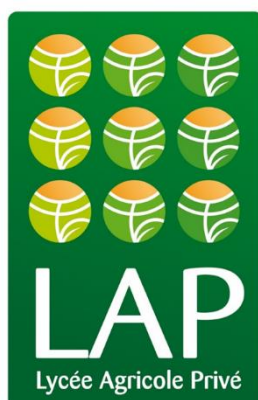
Internet site for the LAP: <https://asaplap.org>

Instagram: #lapburkina



MAIN SPONSORS





Association pour le LAP (ALAP)

BP 3492 Bobo Dioulasso

Commune rurale de Léna

Village de Oualana

Burkina Faso

Tel: + 226 20980600

Email: herve@asap-foundation.org

Website: <https://asaplap.org>