

# Agricultural Secondary School

Activity report July 2014 - June 2015





## Contents

1. Objectives of the LAP: .....	6
2. General information: .....	6
3. Organization.....	7
4. Realized infrastructure between July 2014 / June 2015.....	7
5. Personnel year 2014-2015 .....	10
6. Results 2014-2015.....	11
Grades 2014-2015.....	11
Results of the fourth year students at the national exam BEPC.....	12
What happens with the students of fourth year? .....	12
Analysis of those results: .....	12
7. Program of studies:.....	14
8. Students: .....	15
Evolution of the number of students.....	15
Health of the students: .....	16
Accommodation of the students: .....	17
9. Production of the LAP this school year:.....	18
Animals: .....	18
Agriculture and gardening: .....	20
10. Financial report 2014-2015:.....	21
Results versus budget 2014-2015.....	21
Budget 2015-2016:.....	23
Evolution of cost per student per year: .....	25
11. Infrastructure still to be built:.....	25



# Foreword

The LAP has been open for 4 school years. There were 215 students at the beginning of school year 2014-2015.

Infrastructure keeps on being built. Funding for new infrastructure of the school is getting more and more challenging to obtain, as well as to find 70 new sponsors each year.

The number of permanent teachers went from 2 to 4. The challenge is to find teachers with initiative who are willing to participate in the creation of this school using a participative and appreciative approach.

We have not been able so far to link our school with a similar school in a French speaking country. It is still an important objective.

The first group of 46 students passed a national exam called the BEPC. Only 19 of them succeeded. This is very disappointing. In this report we will try to find the answer to this low result.

Since April 1<sup>st</sup> 2015, in order to better split activities in Burkina, the school is under the management of a local association called ALAP (Association for the LAP).

There are major challenges ahead of us. However, we are very motivated to meet them based on the feedback we have from the students and their parents.

A huge thanks to all who have made this possible.

Sincerely,

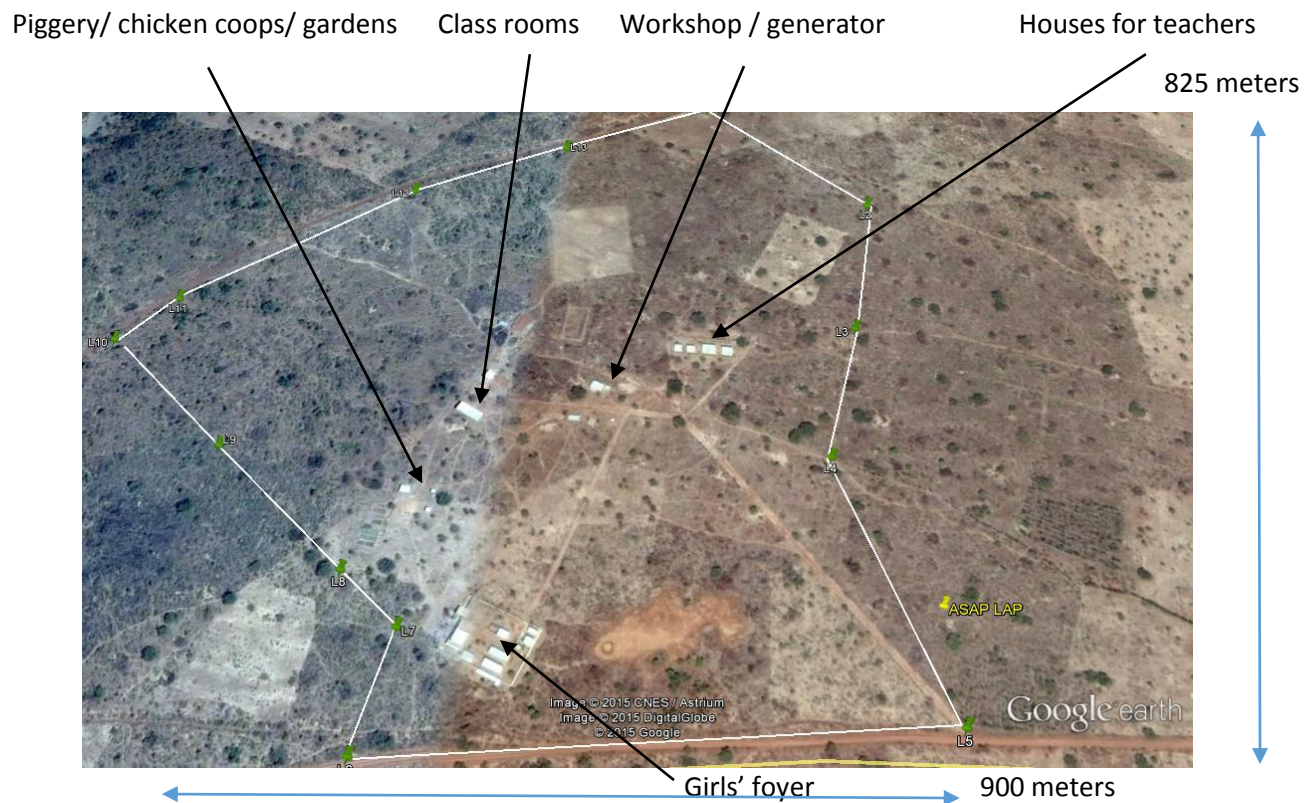
Hervé Millet

## 1. Objectives of the LAP:

- Offer quality education to children coming from poor families
- Offer an education adapted to the need
- Offer an education which helps identify and develop the strength of the students
- To be sustainable with the donation of the sponsors and the fees paid by the parents

## 2. General information:

- The secondary agricultural school called LAP has been created by the ASAP foundation. It has been opened in October 2011. Since April 1<sup>st</sup> 2015 the LAP is under the control of a local association called ALAP (association pour le LAP).
- Location: located on 48 hectares of land in the village of Oualana in Burkina Faso. It is situated at 52 km from Bobo Dioulasso Officially approved by the ministry of education
- Officially approved by the ministry of education
- All students come from the 10 villages the ASAP foundation is working with



View of the LAP with realization until the end of 2013.



### 3. Organization

In April 2015, the local “association for the LAP” (ALAP) took over the responsibility of the LAP. ALAP was created in order to make the LAP independent of ASAP Burkina.

The board of ALAP is shown in the table below.

Position	Name/First name	Address	Job
President	Millet Hervé	3492 Bobo Dioulasso	Engineer
Vice-President	Teri Odile	3492 Bobo Dioulasso	Project manager
Treasurer	Millogo Jean Francois	3492 Bobo Dioulasso	Retiree
Vice Treasurer	Berehoudougou Rock Parfait	3492 Bobo Dioulasso	Accountant
Secretary	Sanou Fleur Elza	3492 Bobo Dioulasso	Secretary
Vice Secretary	Kietega Solange	3492 Bobo Dioulasso	Nurse

### 4. Realized infrastructure between July 2014 / June 2015



Wall around the boys' foyer



Showers and toilets



House for the supervisor of the boys' foyer



4 dormitories for the boys with 2 rooms each

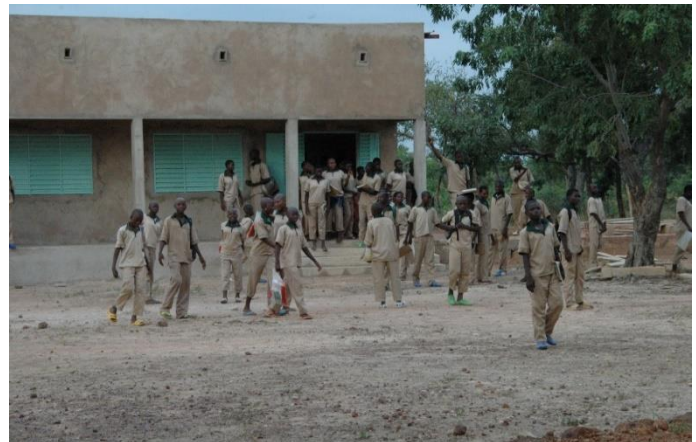
4



Volley ball platform



Blackboard for the boys' foyer



4th classroom

The total amount invested in infrastructure is 675.000 euro until July 2015.





New water well with solar panels

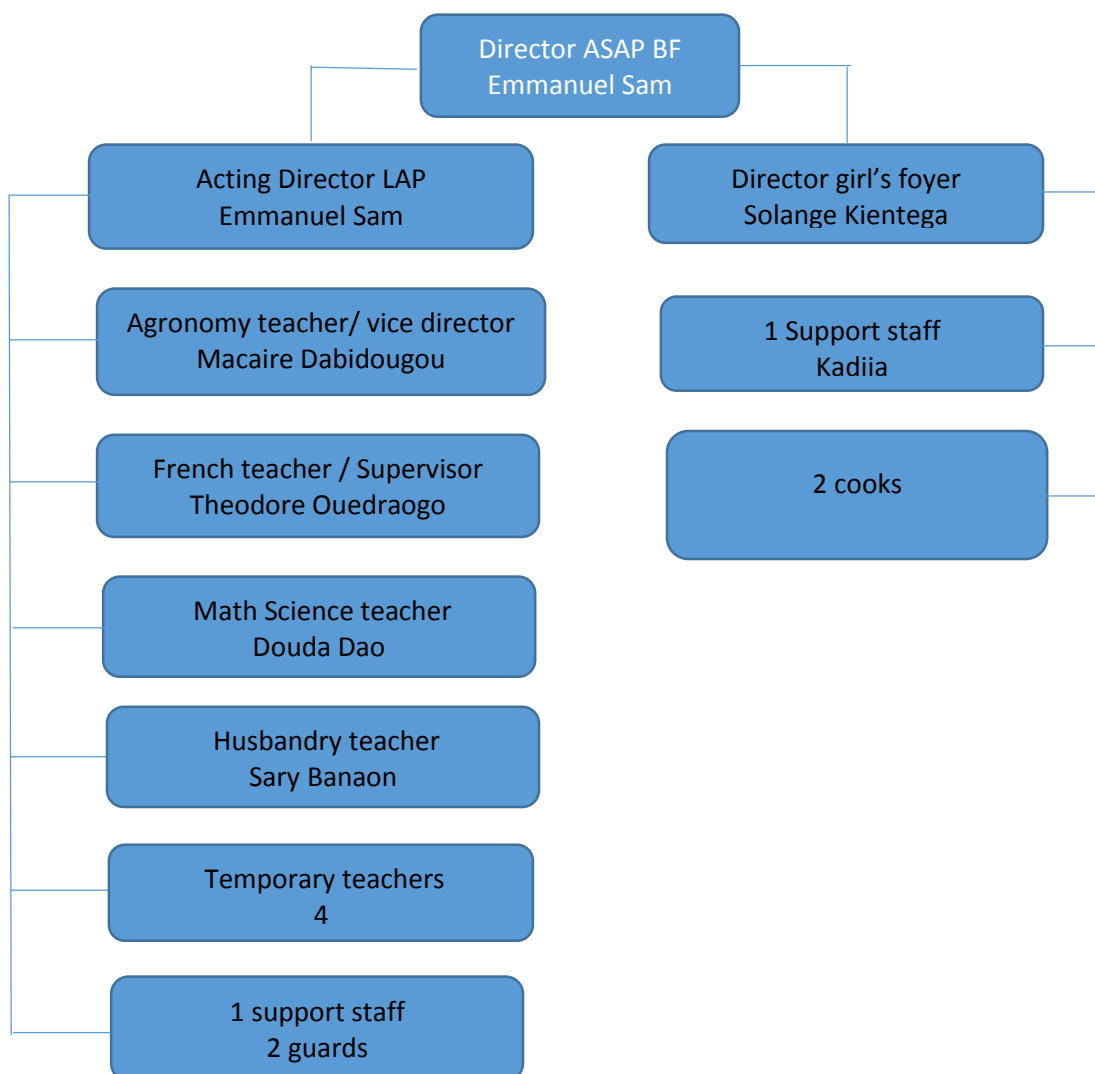


Nursing post



Grinding mill

## 5. Personnel year 2014-2015



**Comments on teachers:** the school is rather remote (55km from the city of Bobo Dioulasso). Permanent teachers have to live in a compound. It is not easy to find experimented teachers who accept to come to the LAP as permanent teachers.



## 6. Results 2014-2015

### Grades 2014-2015

Grades are over 20.

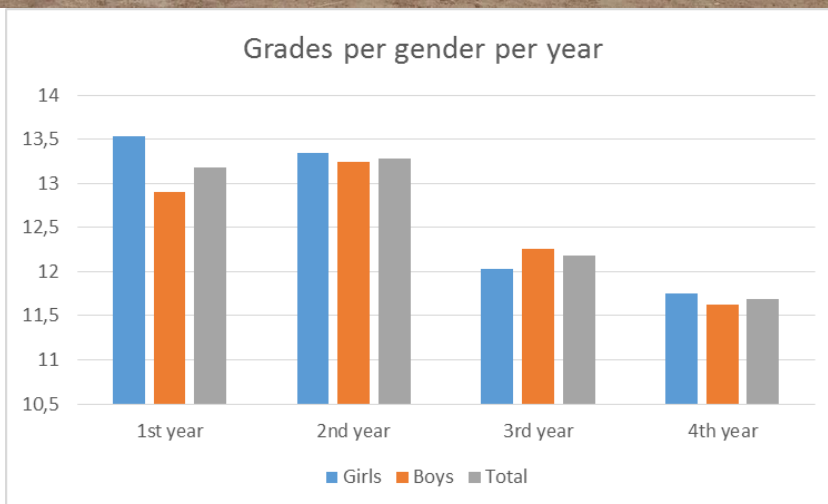
Class	Number of students	Grade average	Highest grade	Lowest grade	Students not going to next year
First Year	60	13,18	18,45	7,02	4
Second year	54	13,28	17,60	9,26	1
Third year	54	12,18	17,64	8,35	6
Fourth year	46	11,87	16,05	8,58	*

In addition to the 8 students not coming back next school year because of bad grades, 3 boys of CAP3 have been expelled because of bad attitude towards the female students.

\*see next page the situation of the Fourth year students.



First year students



#### Comments on the grades of the students:

- 1- Grades of 3<sup>rd</sup> year students are significantly lower than the ones of 1<sup>st</sup> and 2<sup>nd</sup> year. It can be explained by a problem of discipline of this particular group making it difficult for the teachers and students to work properly. Three students were expelled from this group at the end of this school year. Hopefully they were the core of the problem.



- 2- *As for the lower grade of the 4<sup>th</sup> year students, this comes from the grading of the work of the students which in an exam year are much more severe than in other years.*

#### Results of the fourth year students at the national exam BEPC

All 46 students of fourth year tried to get the BEPC in June 2015:

- 19 students got their diploma (41%)
- 18 had a second chance and did not get their diploma
- 9 did not get a second chance

#### What happens with the students of fourth year?

There are not enough students (19) to open the second cycle which was planned for year 2015-2016.

Those 19 students' parents will have the choice to find a general study secondary school to keep studying or to attend another agricultural school located close to Ouagadougou.

The 18 students who had a second chance but did not get their diploma will be offered the possibility to redo the fourth year.

The 9 students who did not get a second chance at the national exam, will have to look for another school if they wish to keep studying.

#### Analysis of those results:

We expected better results than 41% for our students. Below are some other success rates in Burkina Faso to put our results in perspective.

National success average: 24%

Public secondary school in Lena: 30%

Private school Sainte Therese in Banfora: 47%

Private school Louis Querbes: 77%



Fourth year students



In the table below we have analyzed the results and proposed some solutions.

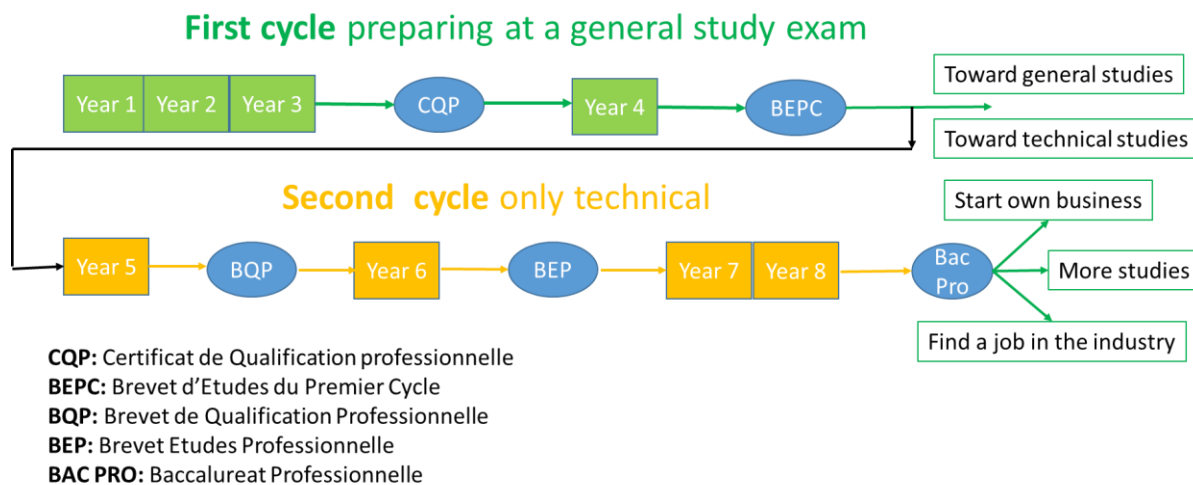
Results	Why?	Propositions
Bad grades in French	Not enough hours of studies	Change of the program of CAP4 to have the same number of hours as in a normal school. Those hours will be taken from technical subjects' hours.
	Children do not read enough	Better organize the library and get African books.
	Correction of French in all subjects	Written test in all subjects (Math, history, sciences...) will have a bonus / malus point system based on the orthography (this is already in place in husbandry).
	French teacher going away	New French teacher to be recruited
Bad grades in Math	Not enough hours of studies	Change of the program of CAP4 to have the same number of hours as in a normal school. Those hours will be taken from technical subjects' hours.
	Low level of students due to non-performant teacher in previous year	Continuity with the current teacher who has already raised students of other classes to a good level.
Bad grade in English	English is taught by a temporary teacher for whom we had to accommodate his schedule. This means that students would have up to 3 hours of English in a row	Recruiting of a permanent English teacher, who will also support the French teacher.
Over confidence	The technical subjects grades adds 2 points on average to the overall grade	Have a clear split between technical and general subjects on the report cards of the students
Preparation to the exam	We had 2 mock exams this year which are not enough.	Keep doing the 2 mock exams plus introduction of the CQP agricole (certification de qualification professionnelle) exam in 3 <sup>rd</sup> year of the LAP.
Ways to study	Students learn by heart instead of understanding	Adapt the teaching to change the learning method
Studies time	Students have a heavy load of lectures. Students do not know	Help students to organize their study time. Insist for pauses.



	how to properly and efficiently use the time they have to study outside the classroom.	
Lack of discipline	No permanent principal	Recruiting of a new principal

## 7. Program of studies:

Below is the latest study program at the LAP.



This program allows the successful students to make a choice after 4 years: either they keep on with technical studies at the LAP or they can switch to a general studies school.



## 8. Students:

Students are selected via test from the villages where ASAP is active.

### Evolution of the number of students

Year	2013-2014			2014-2015			Planned 2015-2016		
	Girls	Boys	Total	Girls	Boys	Total	Girls	Boys	Total
First Year	20	38	58	26	34	60	27	33	60
Second year	21	34	55	19	35	54	24	32	56
Third year	29	26	55	20	34	54	19	34	53
Fourth year				24	22	46	31	35	66
<b>Total</b>	<b>70</b>	<b>98</b>	<b>168</b>	<b>89</b>	<b>125</b>	<b>214</b>	<b>101</b>	<b>134</b>	<b>235</b>

### **Comments on number of students:**

*A LAP entry test was given to close to 200 students from which we have selected 60 for the school year 2015-2016.*

*2- We have a rather low attrition this year. A better and immediate follow up of students with difficulties can explain this situation.*

*3- Discipline and control of the students need to be more thorough.*



Second Year  
students



Third year students

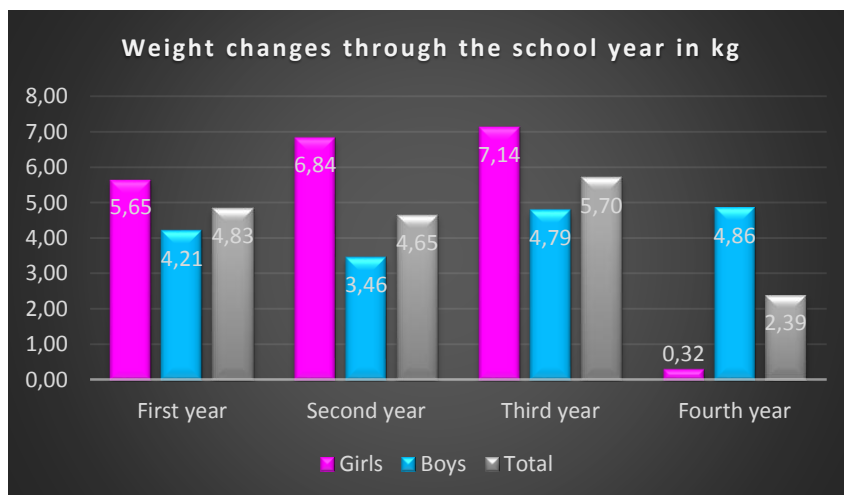
Health of the students:  
All the

students are vaccinated against meningitis.

A new nursing post has been built to help health care at the LAP. It will be operational for the coming school year.

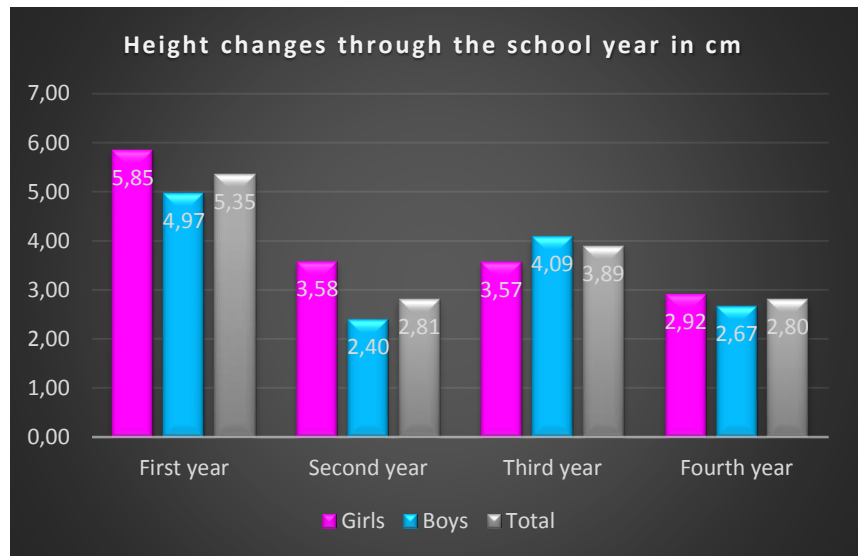
***Evolution of the weight and size of the first year students during the school year:***

No real explanation for the low weight change for the girls in the 4<sup>th</sup> year.





### Accommodation of the students:



All the girls and 37 boys were accommodated at the LAP from the beginning of the school year. In April we opened 2 new dormitories and only 18 boy's students were still extern. For school year 2015-2016, all students will be living on campus.





## 9. Production of the LAP this school year:

The production comes from the fields, the vegetable gardens, the breeding of pigs, chickens and beekeeping.

The purpose of these activities is mainly to teach the children how to grow vegetables and how to breed animals. The production is used in the preparation of the meals for the students.

### Animals:

- Pigs:** the costs of feeding the pigs exceeded the revenues made from the sales. Lack of control at the beginning of the year, what type of feeding was given and where it was purchased is part of the problem. The budget 2015-2016 is more in line with what we can expect from this production.





- **Chickens:** same things happened with the chickens regarding the control of the costs of the food.



Pigs and chicken	Costs	Revenues	Results
Realization 2014-2015	1.823.250	416.200	- 1.407.050
Budget 2015-2016	1.050.000	1.050.000	-

- **Beekeeping:** this year we had to replace two hives which had burned during the dry season. Production in April was very good. We plan to add 10 hives at the end of the year.



Separating the honey from the wax using the sun.

Beekeeping	Cost	Revenues	Results
Realization 2014-2015	116.000	71.000	- 45.000
Budget 2015-2016	70.000	71.000	1.000

## Agriculture and gardening:

- **Agriculture:** the control of the production and the estimation of what was used in the meals of the children was not correctly done.



Fields production	Costs	Revenus	Results
Realization 2014-2015	1.203.500	325.250	- 878.250
Budget 2015-2016	1.507.000	1.640.000	133.000

- **Gardens:** this is the only production which brought some benefit. The main input is manpower which is given by the students.



Gardens	Costs	Revenues	Results
Realization 2014-2015	112.500	186.250	73.750
Budget 2015-2016	426.000	542.500	116.500





Meeting with the parents, April 2015

## 10. Financial report 2014-2015:

### Results versus budget 2014-2015

The structural costs are supported by:

- The parents: € 52 per year in cash plus 2,5 bags of corn for the girls and 1,5 for the boys (girls are staying at the foyer and most of the boys are not yet).
- The sponsors: € 360 per year. The first group of sponsors is paying € 240. The increase comes from the addition of the foyer for the girls and of providing 3 meals per day for all students.

Half of the sponsors are found via A Petits Pas (a French association) and half from ASAP Nederland.

<b>Funding sources</b>	<b>Realization 2014-2015</b>	<b>Budget 2014-2015</b>	<b>Difference</b>
Sponsors	46.845.600	49.203.600	-2.358.000
Cash fees from parents	7.478.750	7.875.000	-396.250
Corn payment parents	4.510.000	4.675.000	-165.000
Results fields	-878.250	0	-878.250
Results gardens	73.750	0	73.750
Results animals	-1.407.050	0	-1.407.050
Results beekeeping	-45.000	0	-45.000
<b>Total revenue in CFA</b>	<b>56.577.800</b>	<b>61.753.600</b>	<b>-5.175.800</b>
<b>Total revenue in euro</b>	<b>86.378</b>	<b>106.524</b>	<b>-20.146</b>

### Costs

<b>Personnel costs</b>	<b>Realization 2014-2015</b>	<b>Budget 2014-2015</b>	<b>Difference</b>
Salaries fulltime personnel	15.107.356	15.386.767	279.411
Salaries temporary personnel	7.525.000	5.628.800	-1.896.200
Taxes	617.544	939.767	322.223
Social charges	2.490.278	3.698.167	1.207.889
Occasional	280.000	80.000	-200.000
<b>Total Personnel costs</b>	<b>26.020.178</b>	<b>25.733.502</b>	<b>-86.676</b>
<b>Fixed costs</b>	<b>Realization 2014-2015</b>	<b>Budget 2014-2015</b>	<b>Difference</b>
Telephone /internet	610.762	443.000	-167.762
Electricity / gasoil generator	3.515.800	4.060.575	544.775
Transport Bobo / LAP	734.000	410.275	-323.725
Travel costs	1.454.675	1.700.000	245.325
Accounting costs	600.000	300.000	-300.000
Training	70.000	50.000	-20.000
Bank charges	2.500	25.000	22.500
Office supplies	403.125	1.100.000	696.875
Small equipment	1.355.250	904.487	-450.763
Other costs	276.900	500.000	223.100
<b>Total fixed costs</b>	<b>9.023.012</b>	<b>9.493.337</b>	<b>470.325</b>
<b>Variable Costs</b>	<b>Realization 2014-2015</b>	<b>Budget 2014-2015</b>	<b>Difference</b>
School supplies	2.258.000	4.458.929	2.200.929
Building maintenance	76.000	600.000	524.000
generator maintenance	458.000	300.000	-158.000
Computers maintenance	327.450	0	-327.450
Water system maintenance	105.500	300.000	194.500
Motorbikes maintenance	105.400	250.000	144.600
Insurances	527.000	150.000	-377.000
Consultancy	1.498.250	450.000	-1.048.250
Electricity maintenance	84.000	50.000	-34.000
Meals costs	11.244.350	12.748.820	1.504.470
Uniforms	1.427.750	2.018.138	590.388
Parents meetings	304.200	650.000	345.800
Medical costs	628.990	1.355.967	726.977
<b>Total variable costs</b>	<b>19.044.890</b>	<b>23.331.854</b>	<b>4.286.964</b>
<b>Total costs</b>	<b>Realization 2014-2015</b>	<b>Budget 2014-2015</b>	<b>Difference</b>
<b>Total expenses LAP 2014-2015 CFA</b>	<b>54.088.080</b>	<b>58.558.692</b>	<b>4.670.612</b>
<b>Total expenses LAP 2014-2015 euro</b>	<b>82.577</b>	<b>89.403</b>	<b>7.131</b>
<b>Results LAP 2014-2015 cfa</b>	<b>2.489.720</b>	<b>3.194.908</b>	<b>-705.188</b>
<b>Results LAP 2014-2015 euro</b>	<b>3.801</b>	<b>4.878</b>	<b>-1.077</b>

Main differences:

- 1- **Revenue:** there were 10 students less than budgeted in 2014-2015, this accounts for 56% of the difference in revenue. The other 44% comes from the loss of income in the production activities.
- 2- **Costs:**
  - a. Personnel costs:
    - i. 33% higher expenses for temporary teachers: in order to help weaker students, we had decided to start some students earlier. Lectures were mainly given by temporary teachers.
    - ii. Social charges: wrong estimation in the original budget
  - b. Fixed costs:
    - i. Transport cost: higher cost due to many trips to bring supplies to the LAP.
    - ii. Accountant cost: wrongly budgeted
    - iii. Office supplies / small equipment: probably some mistakes in the coding of those expenses. The higher cost in the small equipment balanced by the lower cost in the office supplies
  - c. Variable cost:
    - i. School supplies: use of supplies sent with the container decreases the amount purchased in Burkina
    - ii. Generator maintenance: unskilled maintenance people made us waste money for the generator
    - iii. Insurances: medical insurances for the personnel was not budgeted
    - iv. Consultancy: fees paid to place article in the local newspaper as well as for recruiting for personnel were not budgeted
    - v. Meal cost: good control and good negotiation of the purchases
    - vi. Uniforms: cost was over budgeted
    - vii. Medical cost: we got some free medications from neighboring medical centers

#### Budget 2015-2016:

<b>Revenues</b>	<b>Realization 2013-2014</b>	<b>Realization 2014-2015</b>	<b>Budget 2015-2016</b>
Sponsors		46.845.600	55.413.000
Cash fees from parents		7.478.750	8.225.000
Corn payment parents		4.510.000	5.875.000
Results fields		- 878.250	133.000
Results gardens		73.750	116.500
Results animals		- 1.407.050	-
Results beekeeping		- 45.000	11.000
<b>Total revenue in CFA</b>	<b>45.000.900</b>	<b>56.577.800</b>	<b>69.773.500</b>
<b>Total revenue in euro</b>	<b>€ 68.704</b>	<b>€ 86.378</b>	<b>€ 106.524</b>
<b>Costs</b>			
<b>Personnel Costs</b>	<b>Realization 2013-2014</b>	<b>Realization 2014-2015</b>	<b>Budget 2015-2016</b>
Full time personnel		15.724.900	16.159.500
Temporary personnel		7.805.000	7.550.000



Social security		2.490.278	2.494.800
<b>Total personnel</b>	<b>22.417.277</b>	<b>26.020.178</b>	<b>26.204.300</b>
<b>Fixed cost</b>			
Telephone /internet		610.762	610.000
Electricity / gasoil generator		3.515.800	4.000.000
Transport Bobo / LAP		734.000	750.000
Travel cost		1.454.675	1.500.000
Accounting cost		600.000	600.000
Training		70.000	300.000
Bank charges		2.500	30.000
Office supplies		403.125	1.100.000
Small equipment		1.355.250	1.500.000
Other costs		276.900	500.000
<b>Total fixed cost</b>	<b>14.331.745</b>	<b>9.023.012</b>	<b>10.890.000</b>
<b>Variable cost</b>			
School supplies		2.258.000	3.500.000
Building maintenance		76.000	600.000
Generator maintenance		458.000	600.000
Computers maintenance		327.450	300.000
Water system maintenance		105.500	300.000
Motorbikes maintenance		105.400	250.000
Insurances		527.000	717.000
Consultancy		1.498.250	600.000
Electricity maintenance		84.000	500.000
Meals cost		11.244.350	13.726.636
Uniforms		1.427.750	2.000.000
Parent meetings		304.200	650.000
Medical cost		628.990	1.000.000
<b>Total variable cost</b>	<b>14.195.085</b>	<b>19.044.890</b>	<b>24.743.636</b>
<b>Total cost CFA</b>	<b>50.944.107</b>	<b>54.088.080</b>	<b>61.837.936</b>
<b>Total cost euro</b>	<b>€ 77.777</b>	<b>€ 82.577</b>	<b>€ 94.409</b>
	<b>Realization 2013-2014</b>	<b>Realization 2014-2015</b>	<b>Budget 2015-2016</b>
<b>Result LAP in CFA</b>	<b>-5.943.207</b>	<b>2.489.720</b>	<b>7.935.564</b>
<b>Result LAP in EURO</b>	<b>-€ 9.074</b>	<b>€ 3.801</b>	<b>€ 12.115</b>

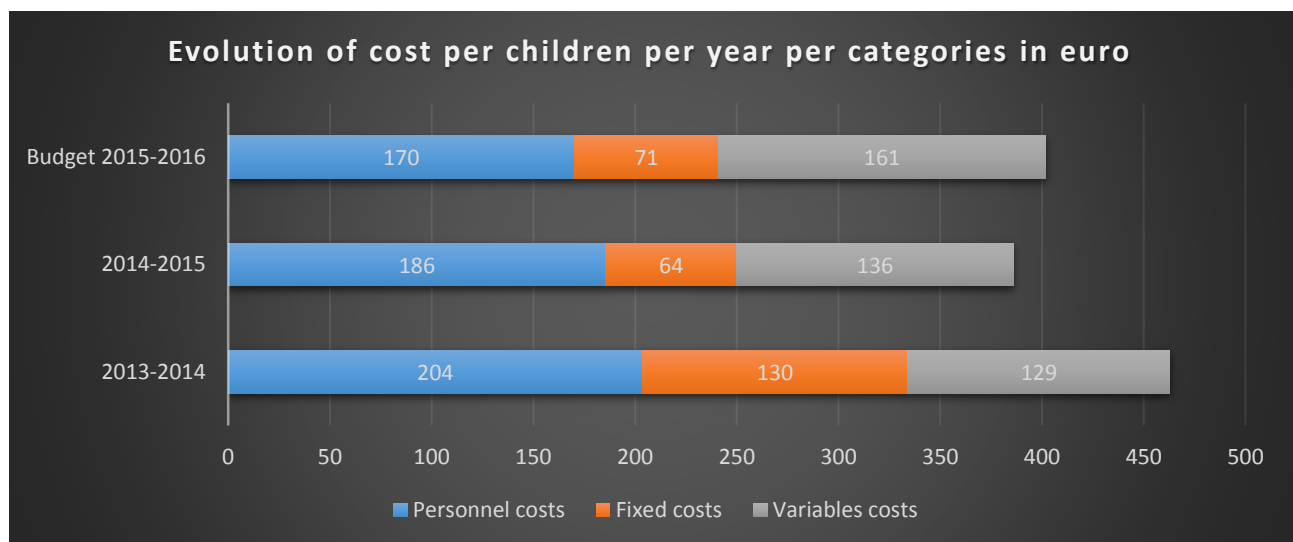
**Main comments on budget:**

- 1- **Revenue:** increase of 10% of the number of students and no loss in the production activities at the LAP
- 2- **Cost:**

- a. Personnel: addition of a new director
- b. Variable cost: in line with the increase of the number of students



Evolution of cost per student per year:



11. Infrastructure still to be built:

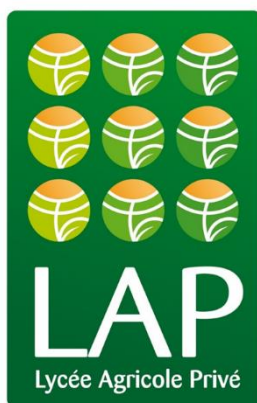
Buildings still to be built:

- Class rooms for the second cycle of studies
- Refectory / study room for the boys foyer
- House for the boys foyer supervisor
- 2 Houses for permanent teachers
- Teachers room and library of the second pedagogical block
- Stable
- Silo
- Laboratory
- Dormitories for the second cycle students (girls and boys)
- Improvement of the kitchen
- Additional toilets / showers for both girls and boys foyer









**Association pour le LAP (ALAP)**

BP 3492

Bobo Dioulasso

Burkina Faso

Tel: + 226 20980600

Email: [contact@asap-foundation.org](mailto:contact@asap-foundation.org)

**Lycée Agricole Privé (LAP)**

Commune rurale de Léna

Village d'Oualana