

2012

GLOBEMED
@ROCGHESSTER

QUARTERLY
REPORT



AUGUST -
NOVEMBER

MESSAGE FROM CO-PRESIDENTS



Dear friends,

Now that this year is well underway, we would like to share with you our progress as well as our goals and plans moving forward. We have accepted 21 new staff members, bringing our chapter total to 47 making us one of the largest chapters in the GlobeMed network. The excitement level both in our chapter and in our school community is higher than ever, and we are looking forward to turning that energy into success advocating and fundraising for Kallpa. So far, we have held two major events, both of which were really successful. Our first was called Global Marketplace, where we had members and friends donate items to sell to students as they came back to school for the new year. The event earned us \$760.00 of profit, well exceeding our expected profit of \$500.00. It was a really encouraging start to our year. The next event was hosted by our GlobalHealthU team. We held a panel discussion to discuss the pros and cons of the health care plan that was recently passed by President Obama as a way to educate students as we approach the presidential elections this November. Our next major fundraiser will be in December. It will be an art show to try to draw parallels between how people in both Rochester and Iquitos use creativity as an outlet. We are hoping that the event will be one of our major sources of income this year.

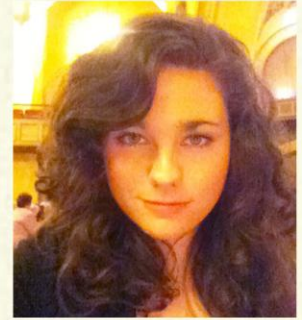
The purpose of this report is to allow you to get to know our organization better, both personally and professionally. Rhett and Maddy have shared many pictures and stories from their visit this summer and they have excited and motivated our members to get to know you better and work harder for our partnership. Skype calls and the exchange of quarterly reports will be great ways for us to continue to build this relationship and learn from each other in so many ways. It is clear that you have all had a huge impact on Rhett, Maddy, Sara and Sarah, and we look forward to extending their passion to the rest of our membership.

Sincerely,

Ria Pal and Jeremy Harding

Copresidents, GlobeMed at University of Rochester

MEET **A** GLOBEMEDDER:



MADELEINE SALISBURY

Hi everyone, my name is Madeleine Salisbury and I am a new member to the GlobeMed family. From playing volleyball to softball to soccer, all of my life I have been used to strengthening myself as an individual in order to benefit a team in sports. But now in GlobeMed, we are working as a team to strengthen individuals to improve their lives and this change is why I love GlobeMed so much! Never have I felt so connected to real world problems and been surrounded and intertwined with well spoken, headstrong individuals who really want to impact public health. Even though I have just joined GlobeMed, I can already tell that the organization will impact my life for years to come and provide me with valuable experiences promoting global health equity and charity. Other than GlobeMed, at the University of Rochester I am on the varsity crew team and am actively involved in the creative arts club, active minds, and the outing club. My main interest besides public health is the brain, as evidenced by the fact that I am a double major in neuroscience and psychology and work as a research assistant at the Rochester Center for Brain Imaging. I can't wait to actually start fundraising for Kallpa and to see all of our efforts pay off!

Madeleine Salisbury
Class of 2015



BETHANY DAKIN

Hello! My name is Bethany Dakin and I am a new member of the GlobeMed chapter at the University of Rochester. I am studying Neuroscience with hopes of becoming a doctor. My ultimate goal is to someday travel to impoverished communities and provide medical attention to people in need. To get to that point I need to continue to expand my knowledge of global health. I've already begun this process of education through experiences I had while working with communities in the Dominican Republic. This time abroad allowed me to better evaluate my own personal position in regards to global health. I'm so excited to work with your organization this year and provide support to the community of Iquitos, Peru. I hope to continue to expand my knowledge of global health and the Kallpa organization during this year through close contact and our numerous fundraisers. I look forward to having an amazing year and a close friendship with this organization for the rest of my life.

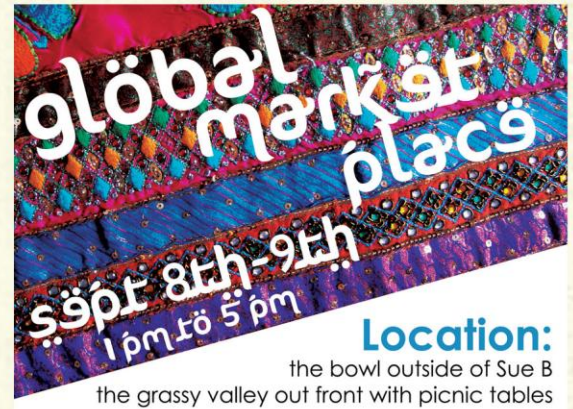
Bethany Dakin
Class of 2014

GLOBEMED
@ROCHESTER

CAMPAIGNS ²⁰¹² EVENTS

Global Market Place

We kicked off the year with a brand new event; a global themed campus-wide rummage sale. We asked members to donate items that they had collected from around the world and we sold them to students and faculty members. Overall it was a very successful event and we raised over \$700 dollars!



AUCTION
 OPENS: OCT. 15TH 8AM
 CLOSES: OCT. 19TH 6PM

\$650

KAPLAN COURSE ONLINE AUCTION

TO BID:
 VISIT OUR FACEBOOK PAGE BY TYPING
 "KAPLAN COURSE ONLINE AUCTION" OR
 VISIT [HTTP://TINYURL.COM/BMCWHYP](http://tinyurl.com/bmcwhyp)

The auction is for a voucher that can replace the cost of ANY Kaplan course including the MCAT LSAT PCAT GRE and YOU will have 4 years to use it for any onsite class here at the University of Rochester.

GlobeMed. AT UNIVERSITY OF ROCHESTER IS SA RECOGNIZED

Kaplan Auction

Description: Many students at University of Rochester take tests to advance on into graduate school and often prepare for these tests by taking a prep course. Kaplan in a company that offers such courses and they donated one for free to us. We auctioned it off online and made \$1000 dollars for internal operating costs!

GlobeMed at University of Rochester presents
 "A CELEBRATION OF GROWTH"
Art Gala December 2012
 Show from Dec. 1st to 15th
 Reception on December 1st

Call for Art

Submit your Art by
 November 11th Midnight at
rocheste8.wix.com/gmatur

"A Celebration of Growth" Art Gala"

This is also a new event for us! We were inspired by Kallpa's creativity and passion and wanted to incorporate that into one of our events this year. We are hosting an art gala at a local gallery where we will sell student and professional art, auction off items, and have fun holiday themed music and treats! We hope to make around \$1,500 dollars with this event.

PAGE3



GROW INTERNSHIP 2012 SUMMER



This summer marked the third anniversary of our partnership with Kallpa Iqitos and the community of El Porvenir. It also marked the beginning of a partnership with the other eight neighborhoods of the district of Pampachica, and as such involved absorbing a mass of information about the different neighborhoods, their inhabitants, their way of life, and their most pressing problems and needs. Our GROW Internship experience made a huge impact on my personal relationship and connection to the people we had the opportunity to work with, our partner staff at Kallpa Iqitos and the residents of Pampachica. Spending time learning about the community, riding in mototaxis and eating the (mostly delicious) food was only part of our GROW experience.



There is simply no substitute for the time that our GROW team spent working in the communities of Pampachica with our team at Kallpa Iqitos and many members of these communities—no other experience could possibly have taught us so much about the situation in our partner community, or made us feel more truly connected both to them and to the Kallpa team members dedicated to our project. We learned about the flooding and participated in the efforts to repair damage to the cultural center in El Porvenir as well as the areas still flooded. We taught English classes and offered afterschool homework help for school-age children, and also had fun at the programs offered at the cultural center for the children and young adults. There was always something going on and we were very busy, often with 18 hour days, but it was absolutely worth it.

Building a strong and lasting relationship with our partner organization has been a long haul for our chapter, due in large part to the turnover of staff members at the Kallpa Iqitos office that caused us to have to start from scratch in some senses after our first year working together. Being able to personally visit our partner and meet the Kallpa staff as well as the community members of Pampachica has been immensely helpful in this respect, as it allowed me to get to know everyone, and learn how to best work with them. Most importantly, we were able to witness first-hand the challenges and inequities experienced by these people every day—for example, while public education is free in Peru, the education system is dilapidated and provides little in the way of an education; while 91% of the homes in Pampachica have electricity, less than 50% have access to clean water and adequate nutrition (Informe 2010).



We have been able to set up weekly Skype calls with the Kallpa staff to foster better communication and strengthen our partnership. We are currently planning the sexual and reproductive health curriculum that will be implemented this summer, as well as developing curricula for the requested "scholarly reinforcement" in both English language and Spanish writing and verbal skills. Along with our Kallpa team we are planning a group Skype video call between members of our chapter and the youth leadership and community of Pampachica. Proposed as an opportunity for exchanging intercultural and international experiences, we hope our group conversation with the partner community will also work towards strengthening our partnership. I very much look forward to working with Kallpa to plan and implement our projects this year and bringing the GROW experience back to our chapter members this year and returning to Iqitos with GROW Team 2013!

GHU SECTION 2012-2013

"WHY DO HUMAN RIGHTS EXIST?"



GHU, or the global health university, is a curriculum that is given to every chapter of GlobeMed from the national office to encourage GlobeMed members to partake in discussions that spread awareness of global health inequity and create leaders for global health. To do this, every GlobeMed meeting has a GHU session that includes activities use small-group discussions, media resources, articles on current events, case studies and materials that offer opposing views. In addition to weekly education activities, GHU also puts on non-profit campus-wide events to raise general social justice awareness.

As important as it is to raising money, resources and help our partner community progress, it is equally important for us to grow. Through educating ourselves, we try and engage in global citizenship and aim to be better able to work with different communities and cultures. Finally, GHU brings the values and ambitions of GlobeMed to not just students within the organization but to the greater campus as well. This year's global health education and leadership development curriculum's theme is: Expanding the Dialogue on Health and Human Rights. So far we have covered Track 1 which asked 'Why do human rights exist?'

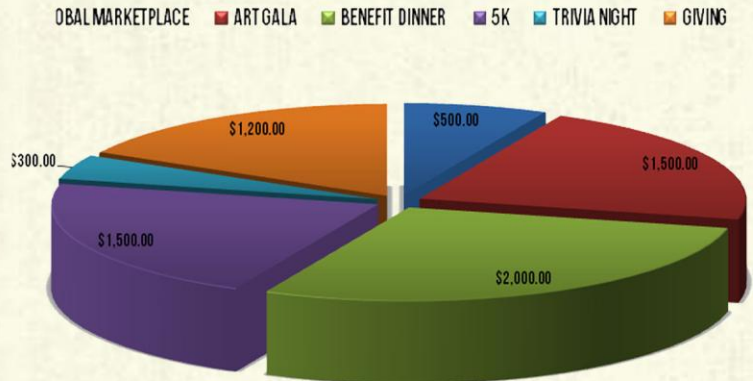


FINANCIAL SUMMARY

Events	Revenue	Goal
Global Marketplace	\$746.36	\$600.00
Art Gala		\$1,600.00
Benefit Dinner		\$2,000.00
6K		\$1,600.00
Trivia Night		\$300.00
Giving		\$1,200.00
Total:	\$746.36	\$7,000.00

FINANCIAL BREAKDOWN

FINANCIAL CHART 2012-2013



LIST OF MEMBERS 2012-2013

- | | | |
|------------------|---------------------|------------------|
| ALEXA FREEDMAN | HALIMA RAFI | NUPUR MITAL |
| ALYSHA ALANI | HEE YOUNG PARK | NYI TUN |
| ANAISE WILLIAMS | HUMMA SHEIKH | PAUL VERGARA |
| ANDREA LEE | JENNA KOLE | POOJA PATEL |
| ANISHA GUNDEWAR | JEREMY HARDING | RACHEL KURTZMAN |
| ANJALI PATEL | KAREN FU | RAMYA KAUSHIK |
| ANNA SELBY | LAURA KEENAHAN | RHETT PARTIDA |
| ARIEL CHEZ | LAUREN MONTEMORANO | RIA PAL |
| ASHLEY MACKEY | MADELEINE SALISBURY | SANDEEP SANDHU |
| AUDRA GOLD | MARGARET SCHOENIGER | SHAKTI RAMBARRAN |
| BECCA BAER | MARY PILARZ | SHOULING ZHANG |
| BETHANY DAKIN | MEHR KASHYAP | STEPHANIE PANAMA |
| CAMERON CUMMINGS | MELISSA MARTIN | THANH HOANG |
| CHEE YUNG KONG | MELISSA ROCHA | YITONG GAO |
| DAVID TOOMEY | MICHAEL HEALEY | |
| EMMA CALDWELL | NAMI SHAH | |
| GIBRAN MANGUI | NICHOLAS SIROTENKO | |



GLOBEMED AT UNIVERSITY OF ROCHESTER

University of Rochester Student Activities

Wilson Commons, Room 201

Rochester, NY 14611

KALLPA IQUITOS

PERU

