

relevance

experience

future

confidence

inspiration

vision

hope

optimism

2010 - 2011 ANNUAL REPORT



A Member of JA Worldwide

Junior
Achievement®
of West Central Florida, Inc.

optimism



Table of Contents

- 3 Program Highlights
- 6 JA Statistics
- 7 Community Hero
- 10 Regional Board Members
- 11 21st Century Partners
- 12 Corporate Contributors
- 14 Individual Contributors
- 16 Statement of Operations
- 16 Giving Society Members
- 18 JA BizTown
- 19 Hall of Achievement
- 20 Bright House Networks /
Junior Achievement
Invitational
- 21 STEMTEC

Junior Achievement educates and inspires young people to value free enterprise, business and economics to improve the quality of their lives.

Junior Achievement uses hands-on experiences to help young people understand the business of life. In partnership with business and educators, Junior Achievement brings the real world to students, opening their minds to their potential and preparing them for the world of work.

Donors find JA to be relevant because it inspires kids to succeed and prepares them to be work-force ready. There is no other organization that delivers the turn-key, easy-to-implement solutions that will ensure donors' future employees are ready for the workforce.

JA volunteers make school relevant and fun, which means kids are more likely to become contributing, successful members of their communities. As volunteers share their real-world experiences and present JA materials, it helps kids bridge the gap between what they learn in school and what they can expect in the world of work.

Educators invite Junior Achievement into their classrooms because JA volunteers and materials support teachers by providing an exciting learning environment that gives students a real-world perspective. JA program content aligns with curriculum standards to help teachers achieve their students' learning objectives.

Students participating in JA programs have a greater comprehension of economics and business than their non-participating peers. Junior Achievement helps prepare students to develop successful financial management habits, empowering them to explore the potential of becoming an aspiring entrepreneur, and providing them with the skills necessary to succeed in a global workforce. In the 2009 – 10 school year, Junior Achievement programs were presented to 75,131 West Central Florida students through the support of our stakeholders.

optimism



Junior Achievement generates optimism for students and volunteers alike.

Richard George

President,
Junior Achievement

2010-2011 Program Highlights

3,925 classes

6,948 Volunteers

75,131 Students

3,574 Teachers



More than 8 out of 10 (83%) of JA alumni agreed that the JA program connected what they learned in the classroom with real life.

Students who participate in Junior Achievement programs have a better understanding of the connection between school and the world of work. Junior Achievement's programs focus on connecting the dots between what is being taught in the classroom and the relevance of the information for the future.

experience

I loved the program. I think it prepared me for life in a positive way. It helped me learn how to budget my money.

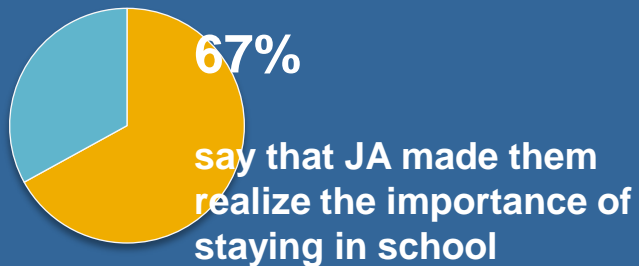
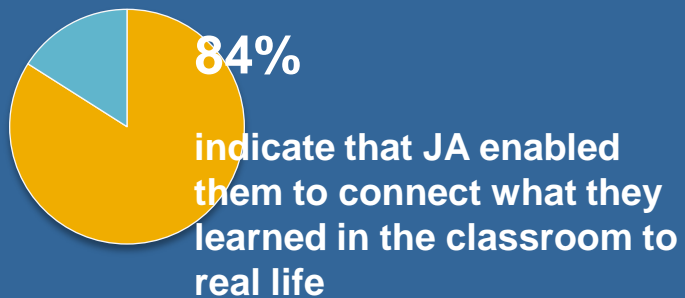
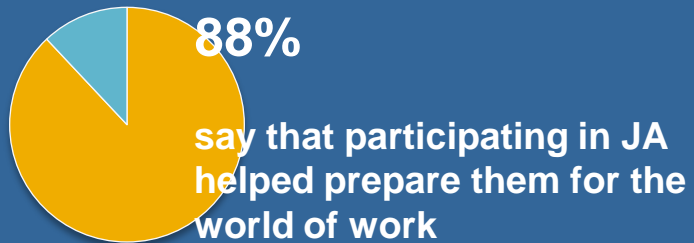
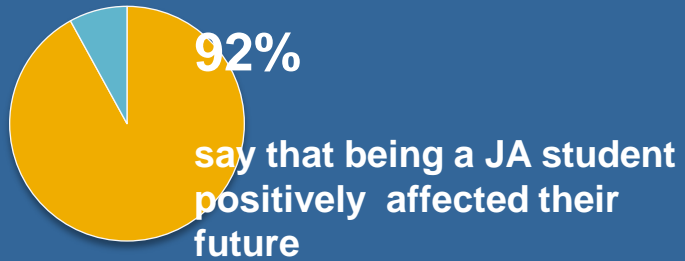
Bryan
JA Student

All of Junior Achievement's programs provide hands-on, experiential learning for students. JA's Capstone Programs in particular bring relevance to their learning through real life simulation. JA Finance Park allows students to build a foundation of intelligent, personal financial decision-making skills. They learn how to construct and adhere to a personal budget — including



housing and food, savings, transportation, entertainment, health care and maintenance, utilities, clothing, and education. At JA BizTown, students learn what it takes to create and run a business, publish a newspaper, supervise employees, and hold elective office, while also learning what it means to personally earn and manage money.

future



Junior Achievement has a beneficial impact on students' attitudes and knowledge base, which they take with them into the adult world of work and personal responsibility.



confidence



Tampa Bay Lightning center Vinny Lecavalier, Lightning owner Jeff Vinik and his wife, Penny, congratulate Ben Carpenter, 17, recognized as a Lightning Community Hero.

More than 88% of Junior Achievement alumni report they are confident in their ability to manage their personal finances effectively.

Being able to donate back to Junior Achievement is a very tangible way for me to say thanks for everything they've done for me, please continue what you're doing. I want other people to achieve, I want other people to have that success.

**Ben Carpenter
Community Hero
JA Student
King High School**

Self-efficacy represents an individual's confidence in her or his ability to accomplish a particular task. Research has shown that young people with a higher generalized sense of self-efficacy set more challenging goals for themselves, try harder, persevere in difficult times, bounce back more quickly after failures, and ultimately are more successful.



inspiration

Through my volunteer experience with Junior Achievement, I realized the important role mentors play in the lives of young people in our community. These students look up to us as we open their eyes to the possibilities that are available to them through hard work and dedication.

JA Volunteer

In a 2010 evaluation, three out of four students (76%) agree that their Junior Achievement volunteer is a role model that they could look up to.

hope

Hope is defined as: trust, reliance; desire accompanied by expectation of fulfillment; one that gives promise for the future.



For 65 years, Junior Achievement of West Central Florida has been equipping area children with many of the workforce readiness, financial literacy, and entrepreneurship skills they will need to succeed in a global economy.

**2011-2012
BOARD OF DIRECTORS**

Alison Casper Adams
Owner and Operator
Caspers Company McDonald's
Restaurant

Mike Attinella
SVP Corporate Controller
HSN

**Vice Chair Organization
Effectiveness**

Betsy Bennett
President
Bennett Consulting Services, Inc.

Steve Blair
Chief Development Officer
USF Health

Tim Bogott
President & CEO
TradeWinds Island Resorts

Dee Brown
Vice President
TECO Energy

Bill Cammarata
Senior VP/Deputy Controller
MetLife

Ron Campbell
Principal
The Seminole Companies

Joseph Cannella
Partner
KPMG

Sarasota Chair

Allen Carlson
President & CEO
Sun Hydraulics Corporation

Nelson Castellano
Attorney at Law
Trenam Kemker

Brian Cone
Senior Executive
Accenture

Chuck Crouse
Partner
Kingery & Crouse, CPA

Craig Cuffe
President
Kablelink Communications

Secretary

Joe DeLuca
Tampa Publisher & VP
St. Petersburg Times

Ronnie Duncan
President
The Duncan Companies, Inc.

Emily Duty
Senior Commercial Lender
Northern Trust Bank

MaryEllen Elia
Superintendent
Hillsborough County Public
Schools

Lisa Faller
President
FKQ Advertising

Mark Fernandez
SVP
Tampa Bay Rays

Dr. Robert Forsythe
Dean
USF – College of Business
Administration

Dr. Judy Genshaft
President
University of South Florida

Irene Guy

Jim Herring
Regional Director
Publix Super Markets

David Hull
COO
Veredus Corporation

Dr. Julie Janssen

Alachua County Chair

Kirk Klein
CFA
Koss-Olinger Financial Group

Steve Klovekorn
Site President
Citi

Michael A. Lewis
Sr. Vice President, Energy
Delivery Florida
Progress Energy

Carl A. Miller
Regional President
Wells Fargo

Dirk Montgomery
CFO
OSI Restaurant Partners, LLC

JA Bowl Co Chair

Robert Mossbacher
Senior Vice President Eastern
US Executive / Global
Treasury Management
Bank of America

Immediate Past Chairman

Pam Muma
Pamela & Leslie Muma Family
Foundation

Sandy Murman
Commissioner
Hillsborough County Board of
County Commissioners

Sam Nein
Market President
Clear Channel Radio

JA Bowl Co-Chair

Patrick O'Connor
Vice President
Raymond James

Denise Palmer

**Co Chair – Resource
Generation - Volunteer**

Ed Peachey
Executive Director
WorkNet Pinellas

Jose Pena
Senior Vice President
Fifth Third Bank

Pete Peterson
SVP, US Sales
Tech Data Corporation

Charles (Charlie) Poe
President
Dare To Dream Publishing, Inc.

**Vice Chair - Resource
Generation – Funding**

Scott Price
Director
A-lign CPAs, LLC

Bill Protz
President
Catalina Marketing Charitable
Foundation

Mike Quackenbush
Partner
PricewaterhouseCoopers

John Ramil
President & CEO
TECO Energy, Inc

Invitational Chair

Mike Robertson
Sr. Vice President of Operations
Bright House Networks Florida

Treasurer

Jack Rybicki
Principal
LarsonAllen LLP

Steve Salzer
Chief Strategic, Compliance &
Legal Officer
PSCU Financial Services

Karen Williams Seel
Commissioner
Pinellas County Board of
Commissioners

Dennis Sheaffer

Alex Sink
Senior Advisor
Hyde Park Capital LLC

Gus Stavros, D.H.L.
Chairman
PELAM Investments, Inc.

William G. Tapp
Managing Shareholder
Kirkland, Russ, Murphy & Tapp

Polk / Highlands County Chair

Wade Taveniere
CFO
Heacock Insurance Group

Chairman of the Board

Joe Teague
Managing Partner
Northwestern Mutual
Teague Financial Group

John A. Tomlin, CPCU, CLU
COO
The Auto Club Group

David Wilbanks, CLU
Financial Representative
Northwestern Mutual Financial
Network

Spirit of Achievement Chair

Fred Zielinski
Director of Culinary Operations
Busch Gardens



21st Century Partnership

2010- 2011 MAJOR STAKEHOLDERS

TRUSTEE LEVEL

Bank of America
Bright House Networks
Greater Tampa Chamber of
Commerce

Hillsborough County Public
Schools
HSBC

Pamela and Leslie Muma
Family Foundation
Pinellas County Schools
Bill Poe Family

Frances and Gus Stavros
Tampa Bay Workforce Alliance
WorkNet Pinellas

CHAIRMAN LEVEL

MetLife

Publix Super Markets Charities

Raymond James Financial

University of Florida

DIRECTOR LEVEL

The Auto Club Group

Citi

University of South Florida

USAA Foundation

PRESIDENT LEVEL

Busch Gardens
Caspers Company McDonald's
Restaurants
Chase
ClearChannel Radio
Couch Family Foundation
Kablelink Communications
Kane's Furniture

Knight Enterprises
MIDFLORIDA Federal Credit
Union
Nationwide Insurance
Foundation
Northwestern Mutual
Teague Financial Group

PricewaterhouseCoopers
Progress Energy
PSCU Financial Services
Raytheon
St. Petersburg Times
Tampa Bay Rays
TECO Energy, Inc.

The Tampa Tribune
University Community Hospital
Veredus Corporation
Wells Fargo

PARTNER LEVEL

Allstate Foundation
A-lign CPAs, LLC
Accenture
Catalina Marketing Charitable
Foundation
Community Foundation of
Tampa Bay

Creative Recycling
CVS
Fifth Third Bank
FKQ Advertising
Grow Financial Federal Credit
Union
GTE Federal Credit Union

Hillsborough Community College
James and Dorothy Baer
Foundation
Lightning Foundation, Inc.
McKibbon Hotel Management, Inc.
OSI Restaurant Partners, LLC
Sun Hydraulics Corporation

Sykes Enterprises, Inc.
T. Rowe Price
Tampa Bay Buccaneers
Tech Data Corporation
TradeWinds Island Resorts
University of Central Florida

CORPORATE CONTRIBUTORS
(\$250 and above)

1st Choice Industries
A-1 Truck Parts of Florida, LLC
AAA Auto Club South
Accu Search Title Examination, Inc.
ADTRAN
Aegis Community Management Solutions, Inc.
Aetna Maintenance Inc.
Aggressive Marketing & Management
Alachua County Property Appraiser
Aladdin Equipment Co., Inc.
Alan Jay Automotive
Albertelli Law
Alcatel-Lucent
Aldridge Connors, LLP
All About Me Company, Inc.
Allstate
Allstate, Drew Ditty Agency
Alro Metals Service Center
Ambassador Limousine and Sedan Inc.
American Direct Marketing Resources, Inc.
American Press, L.L.C.
American Products, Inc.
American Traditions Insurance Company
Ameriprise Financial Services, Inc.
Andrew Copeland Architect
ARAMARK
Aronowitz & Mecklenburg
ARRIS
AT&T
AT&T Wholesale Markets
Atlantic Blue
AutoWay Ford
Avaya Inc.
AvMed Health Plans
B & M Equipment Rental & Sales, Inc.
B.P.O.E. St. Pete 1224 Inc.
BA Precision Products Corporation
Baldwin, Krystyn, Sherman
Bank of America
Bank of America Foundation
Banker Lopez Gassler PA
Barrett Liner & Company
Baseline Builders, Inc.
Baylis & Company, P.A. CPA's
BB&T
BelAir Networks, Inc.
Best Line Oil Company, Inc.
BigBand Networks, Inc.
Bill2Pay
Blue Cross Blue Shield of Florida
Booz Allen Hamilton
Boswell & Dunlap LLP
Bright House Networks
Bruce Harris and Associates, Inc.
Bryco Machine, Inc.
Busch Gardens
Butler Properties Corporation
Cable Television Installation and Service, Inc.

Campaign Account of Alex Sink
Cannon Construction, LLC
Canteen Vending and Office Coffee Service
Capital City Bank Group Foundation
Capstone Companies
Carr, Riggs & Ingram, LLC
Cason Portrait Studio
Caspers Company McDonald's Restaurants
Catalina Marketing Charitable Foundation
Catron & Sewart, P.C.
CBIZ Kirkland, Russ, Murphy & Tapp & Mayer
Hoffman, McCann
CCS Companies
Century 21 Advanced All Service Realty
Century Buick, Inc.
CenturyLink
Charles J. Kubicki Foundation
Charles Perry Construction Co.
Chase
Chocachatti Elementary School
Cintas Corporation
Cisco Systems
Citi
Citi Foundation
Citrus County Chronicle
Clifford M. Ables, III, P.A.
Coldwell Banker MM Parrish Realtors
Collier Companies
Comcast Networks
Commercial Refrigerator Door Company
Communications Data Group
Community Bank & Trust of Florida
Community Foundation of Tampa Bay
Compass Bank
Computer Marketing Innovations
Concurrent Computer Corporation
Construction Services, Inc.
Contec Holdings, Ltd.
Copperhead Charities
Courtyard by Marriott Orlando/Maitland
Cox Communications, Inc.
Creative Recycling Systems, Inc.
Credit Protection Association
Crime Prevention Security Systems, LLC
Crowe Horwath LLP
CSG Systems, Inc.
Cushman & Wakefield
Custom Drilling Services, Inc.
CVS
Cyprex Services
Data Media Associates
Data-Tech
David A. Straz, Jr. Center for the Performing Arts
Deluca Toyota, Inc.
Diamond Oil
Digital Software Systems
Diversified Power Solutions, LLC
Diversified Products Supplier, Inc.
Donson Machine Co
Doonan, Graves & Longoria
DSM.Net, Inc.

DuPage Machine Products
Dynacell Corporation
E. J. Basler Company
Eaton Corporation
Echelon Real Estate Services, LLC
ECI Telecom
Education Foundation of Sarasota County, Inc.
Enterprise Holdings Foundation
Ernst & Young LLP
FCS Inc
Federated Investors
Ferreri Search, LLC
Fiserv Solutions, Inc.
Florida Business Interiors
Florida Cable Contractors, L.C.
Florida Council on Economic Education
Florida Electrical Service
Florida Farm Bureau Enterprises
Florida Food Service
Florida Glass of Tampa Bay, Inc.
Florida Hospital Heartland Division
Florida Seal & Rubber
Florida Venture Forum, Inc.
Florida Woodland Partnership
Focus Machine Tools LLC
Ford of Ocala, Inc.
FPA of the Suncoast, Inc.
FPL FiberNet, LLC
Freedman, Anselmo, Lindberg and Rappe, LLC
Fujitsu Network Communications, Inc.
Gainesville Regional Utilities
Gateway Bank of Central Florida
General Dynamics, Ordinance and Tactical Systems Div.
General Utility Construction, Inc.
George Mangan Insurance
Gerner & Kearns Co., L.P.A.
Goldman, Sachs & Co. Matching Gift Program
Grand Prix of St. Petersburg
Grant Thornton LLP
Grapevine Communications International
Grease Depot, Inc.
Great Bay Distributors
Group 5 & Associates Advertising
Groupware International, Inc.
GTE Federal Credit Union Charitable Foundation
Gulf Electric Inc.
Halfacre Construction Company
Happy Owl
Harley-Davidson of Tampa, Brandon, and Gulf Coast
Harmon Law Offices, P.C.
Haydon-Rubin Development LLC
HD Supply Electrical
Heacock Insurance Group, Inc.
Heartland National Bank
Helios Education Foundation
Hema Rupnarain CPA, PA
Hennessey Family Foundation
Highlands Independent Bank
Highlands Today

Hillsborough County Commissioners
Hillsborough County Public Schools
Hilton DFW Lakes Executive Conference Center
Hitachi
Hopco Food Service, Inc.
Hough Family Foundation Inc.
HSBC - North America
HSBC Consumer and Mortgage Lending
HSN
Huff Ferras, LLC.
Hughes, Watters & Askanase, LLP
Humana Medical Plan Inc.
Hunt Leibert & Jacobson
Huntington Learning Center
Hyatt Regency Clearwater Beach Resort
HyperCube, LLC
Hyundai of New Port Richey
ICONNECTU LLC
Inetico
ING Investment Management
Innisbrook Resort and Golf Club
IntelePeer, Inc.
J. L. Bainbridge & Company, Inc.
J.W.J., Inc.
Jackson National Community Fund
James and Dorothy Baer Foundation
Jim D. Lee, Certified Public Accountant
JMC Design and Development, Inc.
John Cannon Homes, Inc.
Johnson & Freedman, LLC
Jones Knowledge Group
Junior League of Tampa
Juniper Networks
Kablelink Communications
KGB USA
Kimmins Contracting Corporation
Kinder Morgan Foundation
Kirk Pinkerton, PA
Knight Enterprises
Koski Family Foundation
Koss Olinger and Company LLC
KPMG LLP
L-3 Communications
Lake County Jewelers
Lake Medical Imaging
Lake Placid High School
Lake Weir Kiwanis
LarsonAllen LLP
Law Firm of Chalkley & Smith



CORPORATE CONTRIBUTORS**(Continued)**

Law Office of Lora L. Wilson, PL
Law Offices of Daniel C. Consuegra
Law Offices of Marshall C. Watson, P.A.
Lerner, Sampson & Rothfuss
Level 3 Communications
Liberty Road Entertainment
Lightning Foundation, Inc.
Lorio & Associates, Inc.
Louis Pappas Restaurant Group, LLC
LPS Default Solutions
M & I Bank
M.M. Parrish Construction Co.
Mac Driller, Inc.
Magnolia Parke Owners Association, Inc.
Malio's Prime Steakhouse
Manatee Education Foundation
Manhattan Hairstyling Academy
Marinosci Law Group, P.C.
Mark Master, Inc.
Mark Palmer Electric
McCabe, Weisberg, & Conway P.C.
McCalla Raymer, LLC
McKibbon Hotel Management, Inc.
Mercantile Bank
MetLife
MetLife Foundation
Michael Christian Properties
MIDFLORIDA Credit Union
Mid-Florida SHRM Chapter 151
Milstead & Associates LLC
Mobile Cigar Lounge Company
Model Screw Products Inc.
Modern USA Insurance Company
Mont Blanc
Morgan, Lewis and Bockius LLP
Mosaic
Motorola
Napa Auto Parts
National Bankruptcy Services
National Flood Services, Inc.
National Parts Depot
National Risk Services, Inc.
Nationwide Foundation
NeighborWorks America
Neiman Marcus
NETGEAR
NeuStar
New Port Richey Rotary Club
Nikki's of New York Consignment Boutique
Noble Hour
Noble Resources Corporation
North Lakeland School of Choice
Northern Trust Matching Gift and Volunteer Grant Program
O.V.C.S., Inc.
Ocala/Marion County Economic Development Corporation, Inc.
O'Dess and Associates, S.C.
O'Kelley & Sorohan, Attorneys at Law

Orlos & Company, Inc.
OSI Restaurant Partners, LLC
Outback Steakhouse
Owens-Willis Appraisals
Pamela and Leslie Muma Family Foundation
Par, Inc.
Parker Seals
Pasco County Sheriff's Charities Inc.
Pasco County Sheriff's Office
PCS Corporation
Peerless Network, Inc.
Pepsico Foundation
Peterson Manufacturing Company
PGT Industries
Pilgrim Associates
Pinellas Community Foundation
Pinellas Public Library Cooperative
Pite Duncan, LLP
Polo Grill
Potestivo & Associates
PPI Construction Management
Pratt Industries
Precision-Tec
PricewaterhouseCoopers
PrimeGroup Insurance Services, Inc.
Procera Networks, Inc.
Progress Energy
Promptlink Communications
PSCU Financial Services
Publix Super Markets Charities
Pulte Homes
Purvis Gray & Company
QMI
Quality Plumbing of Gainesville, Inc.
QVC
Qwest Communications
R. V. Kuhns & Associates, Inc.
Radiant Software, Inc.
Randall S. Miller & Associates PC
Rasmussen College
Raymond James Financial
Rays Baseball Foundation, Inc.
Raytheon
Real Estate Title Co.
Regional Medical Center Bayonet Point
Regions Bank
Reisenfeld & Associates Attorneys at Law
Resolviit Resources, LLC
Rid-Lom Precision Mfg. Corp.
Robert W. Baird & Co.
Rocketgang, Inc.
Rooms To Go
Rotary Club of Brooksville
Rotary Club of Crystal River Foundation
Rotary Club of Gainesville Sunrise
RTS Cutting Tools
RWL Communications
Saddle Creek Corporation
Safeguard Properties, Inc.
SageQuest, LLC
Salter, Feiber, Murphy, Hutson & Menet, PA
Sam's Club

Sea Island Resort
SeaWorld Orlando
Sebring Florist Inc.
Sebring Heart Center PA
Sebring Optimist Club
SECO Energy
Secured Lending Services, GP
Shands HealthCare
Shapiro & Ingle, L.L.P
Shechtman, Halperin & Savage, LLP
Sierra Foundation, Inc.
Signature Brands, LLC
Sirote & Permutt, P.C.
Smith and Associates Real Estate
Sono Cafe
Southeast Fleet Auto Sales, Inc.
Southern Communications Construction, Inc.
Sprint
Sprint / Nextel
St. Petersburg Times
Stahl & Associates Insurance
Strat Banner
State Farm Insurance Companies
Steven A. Bagen & Associates, P.A.
Steven J. Baum, P.C.
Stone Petroleum Products, Inc.
Storm King Claim Services
Suburban Florida Accessory Center
Sun Hydraulics Corporation
Sun Toyota
SunTrust Bank, Nature Coast
SunTrust Banks, Inc.
Surplus Switching, Inc.
Sutherland Global Service
Sutter Roofing Co. Of Florida
Swiss Automation, Inc.
Sykes Enterprises, Incorporated Charitable Foundation Fund
Syniverse Technologies Inc.
T J Jerger MGA, LLC
T.Rowe Price
T.Rowe Price Foundation, Inc.
Tampa Bay Buccaneers
Tampa Bay Financial Planning LLC
Tampa Bay Partnership
Tampa Bay Rays
Tampa Bay Seminole Club
Tampa Greyhound Track
Tampa T-Shirts
Targus Information Corporation
Teakdecking Systems
Tech Data Corporation
TECO Energy Foundation, Inc.
Teco Energy Inc.
Tervis Tumbler Company
The Dan Wright Corporation
The Dutkowsky Charitable Foundation Trust
The Florida Default Law Group, PL
The GE Foundation
The Law Offices of John D. Clunk Co. LPA
The Mahaffey Company
The Murray Company

The National Firm
The Neilson Company
The Observer Group
The PS Group, LLC
The Teague Financial Group
The William M. and Mary M. Lyons Charitable Fund
Thomas A. & Mary S. James Foundation
Thomas Financial Group
Time Manufacturing Company
Tioga Town Center, LLC
T-Mobile
Total Air Solutions
TradeWinds Island Resorts
Transaction Network Services, Inc.
Trenam Kemker Scharf Barkin Frye O'Neill & Mullis
Trott & Trott, P.C.
Trustee Corps
Ubee Interactive, Inc.
United Fire Protection, Inc.
United Way Tampa Bay
Universal Electronics
Universal Orlando Resort
Universal Remote Control
University Area Community Development Corporation, Inc.
University Commercial Center
University Community Hospital
University of South Florida Foundation, Inc.
Urban, Hanson & Paine, Morgan Stanley
USA Scientific, Inc.
USAA Foundation
USIC Locating Service, Inc.
ValMark Securities Global Gift Fund
Veredus Corporation
Verizon
Versatile Packagers
Vology Data Systems
W. Paul Hoenle Foundation
Wachovia Wells Fargo Foundation
Wal*Mart
Walt Disney World
Waypoints Financial
WCJB TV 20
Wells Fargo Advisors
West Coast Landcare
West Florida Golf Tour LLC
West Point Underwriters
Willis
Willis A. Smith Construction, Inc.
Winlar
Wirbicki Law Group
Women's Sertoma Club of Venice, Inc.
WorkNet Pinellas - 58th St.
Worldwide Supply, LLC
Wright's Gourmet House
X-Cel Technologies, Inc.
Xerox Corporation
Ybor City Rotary Foundation Inc.
ZTE USA

INDIVIDUAL DONORS
(Over \$250)

Mr. Donald A. Adam
Mr. and Mrs. Robert B. Adams
Ms. Pamela R. Adkins
Ms. Marion Albanese
Mr. Luis F. Alvarado
Mr. and Mrs. Raymond Andrews
Mr. Keith Appenzeller
Mr. Michael Attinella
Mr. and Mrs. David Ayers
Mr. and Mrs. Gordon Babbitt
Mr. and Mrs. John Bast
Commissioner Don Bates
Ms. Beth Battaglia
Dr. and Mrs. Keith Baucom
Mr. and Mrs. David Beach
Ms. Andrea Belcher
Mr. Joe Belgrade
Ms. Ivy Bell
Mr. and Mrs. C.J. Benefield
Betsy Bennett and Scott Arndt
Mr. and Mrs. William Benton
Mr. Walter R. Berman
Mr. and Mrs. Scott Blades
Mr. Bart Blessing
Mr. Dean Blinkhorn
Ms. Kay M. Bode
Mr. Ken Boggs
Mr. and Mrs. Thomas Bolinski
Mr. Don Bosko
Mr. Todd Bowden
Dr. W. Daniel Boyd, Jr.
Mr. and Mrs. David A. Brabson
Dr. and Mrs. Matthew Brecher
Mr. Michael Brooks
Ms. Deirdre A. Brown
Ms. Christina Brown
Mr. Chris Butler
Mr. John Byczek
Mr. Michael J. Byrne
Mr. and Mrs. William Cammarata
Dr. and Mrs. Richard Campbell
Mr. Ben Campen
Joseph F. and Theresa A. Cannella
Mr. and Mrs. Pat Carlisle
Mr. and Mrs. Allen Carlson
Mr. and Mrs. Jeff Carlson
Ms. Sarah Case
Mr. and Mrs. Brent Christensen
Mr. Frederick G. Clark
Mr. Keith Cline
Mr. and Mrs. David M. Coffin
Mr. Paul Colee
Mr. and Mrs. Brian Cone
Mr. and Mrs. Charles Conoley

Mr. Timothy Cook
Mr. Lee Cook
Ms. Joli C. Cooper
Mrs. Cornelia Corbett
Ms. Arnall Cox
Mr. and Mrs. Wally Cox
Dr. & Mrs. Jack B. Critchfield
Mr. and Mrs. Chuck Crouse
Mr. Lon Worth Crow IV
Ms. Terri Cullins
Mr. Richard B. Cunningham
Mr. Scott Dailey
Mr. and Mrs. Ken Daley
Dr. and Mrs. Charles Dassance
Ms. Lisa Davies
Mr. Don L. Davis
Mr. and Mrs. Mark C. Dawson
Dr. Roger Dearing
Mr. and Mrs. Joseph DeLuca
Mr. Scott Denman
Mr. Charles H. Denny III
Ms. April Diemer
Mr. and Mrs. Daniel DiLoreto
Mr. Victor Divietro
Ms. Wendy Dodge
Mr. and Mrs. Ben Doerr
Mr. Fred L. Doerr
Mr. and Mrs. Vincent M. Dolan
Ms. Karen Droz
Mr. Brad Duke
Mr. and Mrs. Ronnie Duncan
Ms. Laurie N. Dunston
Ms. Emily Duty
Mr. and Mrs. Cecil Edge
Mr. and Mrs. Jonathan W. Epps
Mr. Gerald K. Ergle
Mr. and Mrs. Ron Ewers
Ms. Lisa Faller
Ms. Janis Fawn
Ms. D. J. Ferguson
Dr. and Mrs. Ignacio Ferras
Ms. Kay Fields
Mr. and Mrs. Sol J. Fleischman, Jr.
Mr. and Mrs. Stephen P. Fluharty
Dr. and Mrs. Robert Forsythe
Ms. Linda Frazier
Mr. and Mrs. Christopher Frost
Mr. and Mrs. Michael Gallagher
Mr. and Mrs. Richard George
Mr. Jon Gertsmeier
Mr. and Mrs. Tim Geske
Mr. Michael Gigliotti
Mr. Gordon Gillette
Ms. Renee Gilmore
Mr. and Mrs. Dale W. Grubb
Mr. and Mrs. Mike Halshman
Ms. Ann G. Hamilton

Mr. Ned Hancock
Mr. Steve Hand
Mr. Tom Harrington
Mr. and Mrs. Michael B. Harris
Mr. and Mrs. Brian Hasson
Mr. Don Hay
Ms. Lyn Haycock
Ms. Jo Ellen Henderson
Ms. Carlene J. Henry
Mr. and Mrs. George Hensley
Mr. Thomas Hermann
Mr. and Mrs. Kevin Herzberg
Mr. Charles R. Holloman, P.A.
Ms. Carrie Holloway
Mr. James Holmes
Dr. Faith Hughes
Mr. and Mrs. David H. Hull
Mr. John Imming
Mr. Thomas Ingram
Mr. and Mrs. S. James Islam
Ms. Lyn St. James
Mr. Kendel M. Jensen
Dr. Julie Mastry Janssen
Mr. T. John Jerger, Jr.
Mr. and Mrs. William B. Johnson
Mr. and Mrs. Craig Johnson
Mr. Terrence Johnson
Mr. Steve Johnson
Mr. Ben Jones
Ms. J. Denise Jordan
Mr. Kermit Kauffman
Mr. John J. Kenney
Mr. Paul Kestenbaum
Mr. and Mrs. Kirk E. Klein
Mr. Randy Klein
Mr. Steven K. Klovekorn

Mr. Jack Kosakowski
Mr. and Mrs. Rob Lane
Mr. Frederick R. Krasne
Mr. and Mrs. Darin Kucera
Mr. John LaCivita
Mr. and Mrs. Chris Larsen
Mr. and Mrs. William E. Latta
Mr. and Mrs. Jeff LeGare
Mr. Richard Lennerth
Mr. and Mrs. Grady E. Lester
Mr. Gilbert A. Levy, Jr.
Dr. Carmelita Lim, M.D.
Mr. and Mrs. David Little
Mr. and Mrs. Jay Logan
Honorable Rodney Long
Mr. and Mrs. Joseph Lowry, Jr.
Mr. Mike Lucas
Mr. and Mrs. A.D. MacKinnon
Mr. and Mrs. Jim Maguire
Ms. Lori Malcolm
Mr. and Mrs. Phil Malcolm
Mr. Tom Mallini
Mr. Patrick J. Mangan
Mr. and Mrs. Stephen Mangan
Mr. and Mrs. Richard A. Marx
Dr. Linda and David May
Mr. James P. McDermott
Ms. Lynda McDermott
Mr. Noel McDonell
Mr. Perry C. McGriff, Jr.
Mr. Pat McMahan
Ms. Debra Meltzer
Mr. and Mrs. Greg Miller
Mr. Mark Monkarsh
Mr. and Mrs. Dirk Montgomery



INDIVIDUAL DONORS
(Continued)

Mr. and Mrs. Tony Morrison
Mr. Christopher Morson
Mr. and Mrs. Robert P. Mossbacher
Mr. Gary H. Moyer
Mr. and Mrs. Kevin Moyer
Mr. Gerard Mulligan
Mr. and Mrs. Leslie Muma
Mr. Peter J. Munson
Ms. Jennifer Murphy
Ms. Carmen Murvin
Mr. and Mrs. Robert Muscott
Ms. Toni Nadolski
Dr. V. P. Nagarajan, M.D.
Mr. Pete Nelson
Mr. and Mrs. Rick Nesbit
Mr. and Mrs. William Nichols
Mr. and Mrs. Ed Nolan
Mr. Bill Obregon
Mr. and Ms. Steve Ocksrider
Mr. Bill Olinger
Ms. Susan Omoto
Mr. Frank O'Reilly
Mr. Mark Fernandez and Ms. Trudie O'Riley
Mr. Bill Owen
Ms. Sarah J. Pallone
Ms. Denise Palmer
Mr. Tommy Pasteur
Mr. Bobby Pastorius
Dr. Palluvi Patel and Dr. Kiran Patel
Mr. and Mrs. Shilen K. Patel
Mr. Edward C. Peachey
Mr. Tim Petty
Ms. Sally Piccolo
Ms. Katherine Pierce
Mr. and Mrs. Scott Price
Mr. Grady Pridgen
Mr. and Mrs. John H. Puccio
Mr. Todd Pund
Mr. and Mrs. Steve Purves
Mr. Steve Queior
Mr. and Mrs. John Ramil
Mr. Mark Raney
Ms. Karen F. Reed
Mr. Mark Reed
Mr. and Mrs. Davis Rembert, Jr.
Mr. Jose Reyes
Mr. and Mrs. Charles Reynolds
Ms. Mary Rich
Mr. and Mrs. John S. Roberts, Jr.
Mr. Michael D. Robertson
Mr. and Mrs. Jason Rogers
Ms. Edna Rohland
Mr. Chad Rupp
Mr. Arthur Rutenberg
Mr. Jack Rybicki
Mr. and Mrs. Christopher L. Schellman

Mr. and Mrs. Dino Schibuola
Mr. and Mrs. James R. Schneider
Mr. and Commissioner Ron Seel
Ms. Shari Segall
Ms. Cindy Seletos
Mr. Tom Shapiro
Mr. and Mrs. Robert R. Sharp
Mr. and Mrs. Michael Shea
Mr. and Mrs. Dennis Sheaffer
Mr. P. J. Sheil, III
Mr. Douglas Sherman
Ms. Kathryn Simpson
Mr. and Mrs. Arthur Singleton
Ms. Jane Soltys
Ms. Laura Spencer
Mr. Robert Stanz
Mr. and Mrs. Gus A. Stavros
Dr. and Mrs. Norman L. Stephens, Jr.
Mr. Andrew Stultz
Ms. Kathleen Sullivan
Mr. and Mrs. James Tagg
Mr. and Mrs. Joe Taggart
Mr. and Mrs. William G. Tapp
Mr. Wade Taveniere
Mr. and Mrs. Joseph P. Teague
Mr. and Mrs. Justin Teal
Mrs. Kim Tesch-Vaught
Ms. Mary Thomas
Colonel and Mrs. Jose R. Thomas-Richards
Mr. William Thompson
Mr. Mark Thomson
Mrs. Edith Tiencken
Mr. and Mrs. John A. Tomlin
Ms. Donna Tomlinson
Ms. Gail Torchia
Mr. and Ms. David W. Urbance
Mr. and Mrs. Jose E. Valiente P.A.
Mr. and Mrs. Mark Vernon
Ms. LaDonna Vieweg
Mr. Juan C. Villa
Mr. and Mrs. John Waechter
Mr. and Ms. Mark Walsh
Mr. Michael Walsh
Ms. Janice Warren
Mr. and Mrs. James W. Warren, III
Mr. Julian Weeks
Mr. Fred Whaley
Ms. Lara White
Mr. David H. Wilbanks
Ms. Carol Williams
Mr. Robert D. Wilson
Mr. David C. Wilson
Mr. and Mrs. James Wimborne
Mr. Barry Wolfson
Mr. and Mrs. Joel D. Wonicker-Cook
Mr. and Mrs. Fred Wurlitzer
Ms. Frances C. Zarb
Mr. Jeremy T. Zeichner
Mr. and Mrs. Frederick Zielinski



STATEMENT OF OPERATIONS

	Totals	% of Total
Revenues		
<i>Corporations</i>	\$ 355,906	12.72%
<i>Foundations</i>	\$ 202,445	7.24%
<i>Public Funding</i>	\$ 400,284	14.31%
<i>Individuals</i>	\$ 545,902	19.52%
<i>JA Bowl</i>	\$ 309,483	11.06%
<i>Celebrate Junior Achievement</i>	\$ 172,148	6.15%
<i>Golf Tournaments</i>	\$ 438,944	15.69%
<i>Other Special Events</i>	\$ 125,224	4.48%
<i>Interest and Other</i>	\$ 56,955	2.04%
<i>Student Related Revenue - JA BizTown</i>	\$ 189,986	6.79%
Total Revenue	\$ 2,797,278	100%
<i>Released from Restrictions - JA BizTown</i>	88,300	
<i>Released from Restrictions - Elapsed Time</i>	81,508	
Total Revenue and Support	2,967,087	
Expenses and Other Costs		
<i>Program Materials and Services</i>	\$ 2,190,936	83%
<i>Fundraising and Special Events</i>	\$ 262,340	10%
<i>General and Administrative</i>	\$ 198,829	7%
Total Expenses	\$ 2,652,105	100%
<i>Unrestricted - Used for PPE JA BizTown</i>		
<i>Increase in Temporarily Restricted - time</i>	\$ 816,825	
<i>JA - BizTown</i>	\$ (88,300)	
<i>Unrestricted - LT to ST Pledges</i>	(81,451)	
Change in Temporarily Restricted Net Assets	\$ 647,074	
Permanently Restricted Endowment Gains	\$ 19,234	
Net Income	\$ 981,290	

NATIONAL FREE ENTERPRISE SOCIETY

Junior Achievement supporters who gave an annual gift of \$10,000 or more

Dorothy and James Baer Foundation
Couch Family Foundation
Dottie and Sandy MacKinnon
Pam and Les Muma
Tina and Scott Price
Melania and Jim Wilkes

HERITAGE SOCIETY

Faithful friends of who have included Junior Achievement in their estate planning

Donna and David Beach
Sam Chechele
Emily Duty
Robin Lester
Tina and Scott Price

GIVING SOCIETY MEMBERS

Multi-year contributors of \$1,000 or more

Ms. Shara Abrams
Mr. Donald A. Adam
Aladdin Equipment Co., Inc.
Alan Jay Automotive
Atlantic Blue
Mr. and Mrs. David Ayers
Mr. and Mrs. Gordon Babbitt
Barrett Liner & Company
Mr. and Mrs. David Beach
Mr. Joe Belgrade
Mr. Bart Blessing
Ms. Kay M. Bode
Mr. and Mrs. Tom Bolinski
Dr. and Mrs. Matthew Brecher
Brice Group
Ms. Deirdre A. Brown
Mr. and Mrs. William Cammarata
Mr. Ben Campen
Joseph F. and Theresa A. Cannella
Mr. and Mrs. Pat Carlisle
Mr. Joshua C. Chase
Children's Services Foundation of
Highlands County Inc.
Coldwell Banker MM Parrish Realtors

GIVING SOCIETY MEMBERS

Multi-year contributors of \$1,000 or more

Continued

Commercial Refrigerator Door Company
Mr. and Mrs. Brian Cone
Ms. Joli C. Cooper
Couch Family Foundation
Cox Communications, Inc.
Creative Recycling Systems, Inc.
Mr. and Mrs. Chuck Crouse
Deluca Toyota, Inc.
Ditek
Mr. and Mrs. Vincent M. Dolan
Ms. Emily Duty
Mr. and Mrs. Kevin Dyer
Education Foundation of Sarasota County, Inc.
England Brothers Construction
Mr. and Mrs. Jonathan W. Epps
Esprix Technologies, LP
Mr. and Mrs. Ron Ewers
Mr. Mark Fernandez and Ms. Trudie O'Riley
Mr. and Mrs. Charles S. Gamble
Mr. and Mrs. Richard George
Mr. Michael Gigliotti
Glaeser Family Foundation
Mr. Sam Goforth
Mr. Steve Hand
Mr. and Mrs. Brian Hasson
Mr. Don Hay
Haydon-Rubin Development LLC
Hennessey Family Foundation
Highlands County IDA
Highlands Independent Bank
Hough Family Foundation Inc.
Mr. and Mrs. David H. Hull
Mr. and Mrs. S. James Islam
Dr. Julie Mastry Janssen
Mr. T. John Jerger, Jr.
Mr. Kermit Kauffman
Kimmins Contracting Corporation
Mr. and Mrs. Mark Kingery
Kirk Pinkerton, PA
Mr. and Mrs. Kirk E. Klein
Ms. Beverly Koski
Mr. and Mrs. David Kresge
L-3 Communications
Lake County Jewelers
Lakeland Automall

LarsonAllen LLP
Mr. Kevin Lee
Mr. Gilbert A. Levy, Jr.
Mr. Mike Lucas
Mr. and Mrs. Bill Lyons
Mr. Randy Lyons
M & I Bank
M.M. Parrish Construction Co.
Mr. and Mrs. A.D. MacKinnon
Manatee Education Foundation
Mr. and Mrs. Richard A. Marx
Mr. Pat McMahon
Michael Saunders & Company
Mr. Mark Monkarsh
Mosaic
Mr. and Mrs. Robert P. Mossbacher
Mr. and Mrs. Leslie Muma
Nalbandian Properties, LLC
Mr. Bill Owen
Pamela and Leslie Muma Family Foundation
Mr. Edward C. Peachey
Mrs. Nancy Perry
Mr. and Mrs. Mark Petty
Ms. Katherine Pierce
PPI Construction Management
Pratt Industries
Mr. and Mrs. Scott Price
Mr. Grady Pridgen
Mr. and Mrs. Steve Purves
QMI
Mr. and Mrs. John Ramil
Mr. Mark Reed
Regions Bank
Mr. and Mrs. Davis Rembert, Jr.
River Greens South Golf Course, Inc.
Mr. Michael D. Robertson
Ms. Edna Rohland
Rooms To Go
RRE Realty Services
Mr. Jack Rybicki
S. Y. Hartt & Son, Inc.
Mr. and Mrs. Christopher L. Schellman
Mr. and Mrs. James R. Schneider
Signature Sotheby's International Realty
Star Banner
Mr. and Mrs. Gus A. Stavros
Dr. and Mrs. Norman L. Stephens, Jr.
Stone Petroleum Products, Inc.
SunTrust Bank North Central Florida

Mr. and Mrs. Joe Taggart
Mr. and Mrs. Joseph P. Teague
Technology Access Partners LLC
The Dan Wright Corporation
The Dutkowsky Charitable Foundation Trust
The Observer Group
The Village
Thomas A. & Mary S. James Foundation
Thomas Financial Group
Mr. and Mrs. John A. Tomlin
Mr. Steve Torres
Mr. and Mrs. Jose E. Valiente P.A.
Mr. Anthony Waelter
Mr. and Mrs. James W. Warren, III
Waypoints Financial
Mr. David H. Wilbanks
Mr. and Mrs. James Wilkes
Workforce Connection





“The corporate sponsors for the JA BizTown businesses have really stepped up to help us and our kids have this rich experience... we could absolutely not have come close to providing this kind of experience at school.” – Teacher

PAM & LES MUMA

The Pam and Les Muma JA BizTown experience is brought to life by the students' teacher, using a four-week, in-class curriculum that encompasses financial literacy, work readiness, and entrepreneurship – the 'Economics of Life.'

Next, students pack up and head to JA BizTown for an exhilarating day-long, simulated city experience. The JA BizTown experience helps students connect the dots through role play: students get to play CEO, and more.



Pam and Les Muma pictured with Mayor of JA BizTown Sebastian Mejia from Mary Bryant Elementary School

“Now I understand why when I ask my mom to buy me something at the store – and she tells me ‘no’ – it is because she is on a budget.”
– Carlos, 5th Grader



Bill Poe Family
Junior Achievement Center
Home of
Pam and Les Muma
JA BizTown
13707 N. 22nd Street
Tampa, FL 33613
(813) 631-1410



Hall of Achievement

CELEBRATION DINNER

2011 LEGACY AWARD

2011 PARTNERS OF THE YEAR



John Tomlin
President & CEO



Dr. Judy Genshaft
President



Dr. Julie Janssen
Superintendent

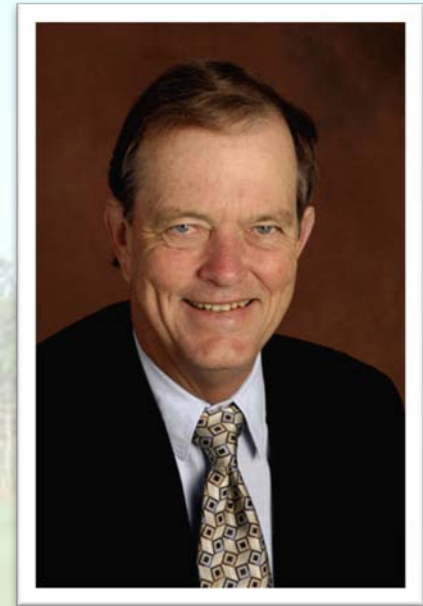


MaryEllen Elia
Superintendent





TOURNAMENT CHAIR
Mike Robertson
Bright House Networks
Senior Vice President of
Operations - Florida



2011 HONOREE
Tom James
Raymond James Financial
Chairman



Science • Technology • Engineering • Math

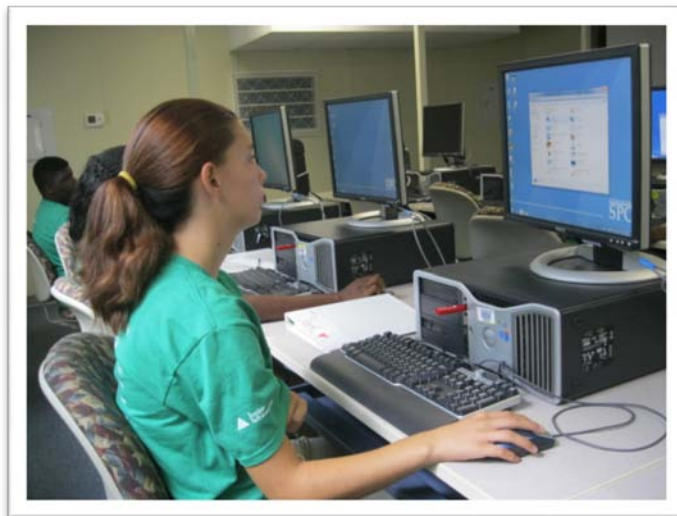
STEMTEC

TRAINING FOR EMERGING CAREERS



The STEM-TEC Summer Career Institute enables students to experience careers in Science, Technology, Engineering and Math. The students get hands-on experience building solar cars, websites and even crime scene investigation!

While working in groups, students improve teambuilding and leadership skills while learning about business planning, software and web design.



The program consists of hands-on activities in various career industries, workplace readiness training, teambuilding, goal setting and personal motivation, in addition to employer site visits as job shadowing experiences in STEM specific fields (Science, Technology, Engineering and Mathematics).





*Serving: Alachua, Citrus, Hernando, Highlands
Hillsborough, Levy, Manatee, Marion, Pasco,
Pinellas, Polk and Sarasota Counties*

13805 58th Street N., Suite 2-140
Clearwater, FL 33760
(727) 530-0884
(800) 481-7599

Bill Poe Family
Junior Achievement Center
Home of
Pam and Les Muma JA BizTown
13707 N. 22nd Street
Tampa, FL 33613
(813) 631-1410

www.jatampabay.org