



# KIDZCAN ZIMBABWE




Founded by Andrea Whatman, a childhood cancer survivor who understood the emotional toll of the disease firsthand, KidzCan began with a simple mission: to bring hope, comfort, and consolation to children battling cancer and their families through volunteer support.

However, Andrea soon recognized a far greater crisis—the urgent need for diagnosis and treatment access. Many children were arriving too late for curable interventions, while families struggled with the financial and logistical burdens of care. What started as a volunteer-driven comfort initiative rapidly evolved into a lifeline for medical and practical support, ensuring:

- Early diagnosis to save more lives
- Treatment access for those who couldn't afford it
- Holistic care addressing the emotional, financial, and physical needs of families



 [www.kidzcanzimbabwe.org](http://www.kidzcanzimbabwe.org)

 [admin@kidzcanzimbabwe.org](mailto:admin@kidzcanzimbabwe.org)

# Table of Contents



**Introduction**

**Executive Director's Message**

**Vision, Mission, Values**

**Clinical**

**Rainbow Children's Village**

**Advocacy**

**Fundraising**

**Psycho Social**

**Awareness**

**Media Links**

**KidzCan Events**

**Projects, Partners, Donors**

**Governance**

**Conclusion**



# Introduction



## Welcome to the KidzCan 2024 Annual Report

This past year has been a transformative period for KidzCan, marked by significant milestones, strategic partnerships, and a deepened commitment to our mission. We are delighted to share our progress, accomplishments, and lessons learned, which demonstrate our dedication to improving the lives of children and families affected by cancer in Zimbabwe. We were honoured to host Mr. Rodney Wong, President of Childhood Cancer International (CCI), who recognized our efforts and reaffirmed the global community's commitment to addressing the unique challenges of childhood cancer in low-resource settings.

We also launched a groundbreaking partnership with the Apostolic Council of Churches in Zimbabwe (ACCZ), expanding our reach to previously underserved and marginalized religious communities. Additionally, we intensified our efforts to support the Government of Zimbabwe in building the capacity of healthcare workers through specialized training programs, aimed at enhancing the quality of care and treatment for childhood cancer patients, promoting early referrals, and effective treatment. These achievements bring Zimbabwe closer to achieving the World Health Organization's (WHO) Global Initiative for Childhood Cancer (GICC) target of achieving at least a 60% survival rate for children with cancer worldwide by 2030.

In the following pages, we invite you to join us on a journey through our accomplishments, challenges, and lessons learned in 2024. We hope that this report will provide insight into our work and inspire you to continue standing with us in our quest to create a brighter future for all children affected by cancer.



## Organizational Overview

KidzCan Zimbabwe is a non-profit organization dedicated to improving the survival rate and quality of life for children diagnosed with cancer in Zimbabwe. We complement the efforts of the Government of Zimbabwe, and as a member of the St. Jude Global Alliance, we collaborate with national and international stakeholders to provide essential medical and psychosocial support. Our core programs include early detection, advocacy, financial aid for treatment, and family support services.

## Vision

Our vision is to have a compassionate world where children with cancer are given the chance to lead healthy and fulfilling lives.

## Mission

To increase the survival rate and ensure the utmost quality of life of children suffering from cancer in a loving and caring environment.

## Goal

Reduction of childhood cancer morbidity and mortality through implementation of evidence based cost effective prevention and control interventions and providing palliative care to improve quality of life of children living with cancer and their families

## Values



1

**LOVE** - serving, protecting and comforting

2

**EMPATHY** - safeguarding the child first and giving family support

3

**INTEGRITY** - Putting our words into practice and keeping the promise.

4

**INCLUSIVITY** - children suffering from cancer in Zimbabwe receiving comprehensive care and treatment within their supportive system.

**Remember that Cancer does not wait  
Play your part don't wait**



**Children do get cancer  
but if detected early it can be treated**



**At KidzCan, we don't just  
think outside the box  
—we think outside the house  
to Fight Childhood Cancer**

As I reflect on the past year, I am filled with pride, gratitude, and hope. At KidzCan, we have continued to push boundaries, challenge assumptions, and drive positive change in the lives of children and families affected by cancer. In 2024, we made significant strides in our mission to provide holistic support, advocate for improved healthcare outcomes, and increase awareness programs that educate communities about the realities of childhood cancer. We expanded our programs, deepened our partnerships, and amplified the voices of those we serve. We are deeply humbled and grateful for the trust and support of our donors and partners, who have stood by us through thick and thin. It is a blessing to have your confidence in our mission, and we recognize the immense responsibility that comes with this trust. Your steadfast support has been a vital source of strength, enabling us to navigate the challenges of a tough economic operating environment. Your generosity and commitment have inspired us to remain focused on our goal of serving the most vulnerable members of our community.

I would also like to express my sincere appreciation to our Board of Directors, whose strategic guidance, expertise, and passion have been invaluable in shaping our organization's vision and direction. As we continue on our journey, we recognize the importance of operational mobility in enabling us to reach and serve more children and families affected by cancer. With increased financial support, resources, and awareness, we are confident that we can overcome the logistical challenges that hinder our ability to provide critical services. Your contributions will be instrumental in helping us bridge this gap and ensure that our life-changing programs and services continue to reach our patients and their caregivers. As we look to the future, we remain committed to creating a world where every child can thrive, free from the burdens of cancer. We will continue to innovate, collaborate, and advocate for the rights and dignity of all children. Thank you for being part of the KidzCan community. Together, we can achieve greatness and create a brighter, more compassionate world for all.

Sincerely,

Daniel Mckenzie  
Executive Director, KidzCan

**" It is up to us to erase from our reports  
the statistics that say: every 3 minutes a  
child dies of cancer."**

Mr João de Bragança, President, Childhood Cancer International

# Governance

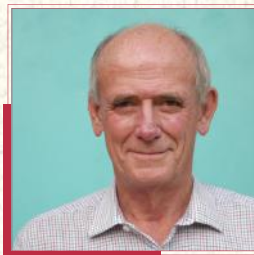
We are deeply grateful to our Board of Trustees and Advisory Committee for their unwavering support and steadfast guidance throughout the year. Their strategic oversight, commitment to transparency, and dedication to our mission have been instrumental in steering our organization forward during both opportunities and challenges.

Our governance framework remains rooted in accountability, ethical leadership, and effective decision-making. The Board met regularly to review our performance, assess risk, and ensure compliance with statutory and regulatory obligations. Their counsel has ensured that we remained focused on delivering impact while upholding the highest standards of good governance.

We sincerely thank each board member for their time, expertise, and continued belief in our cause. Their stewardship has been a cornerstone of our growth, sustainability, and the difference we continue to make in the lives of those we serve.



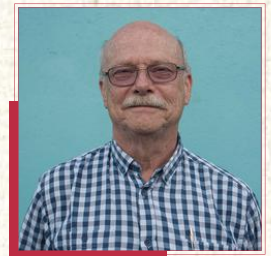
**Andrea Whatman**  
Founder



**Dave Mills**  
Chairperson



**Daniel Mckenzie**  
Executive Director



**Rob Maunsell**  
Board Member



**Unaiswi Nyikadzino**  
Board Member



**Grant Mitchell**  
Board Member



**Simon Scott Elliott**  
Board Member



**Jacob Mukamba**  
Board Member



**Gary Cross**  
Board Member



**Dr Pamhidzai Madzima**  
Board Member



**Early detection is the best protection**

# KidzCan Team

KidzCan Zimbabwe is driven by a diverse team of professionals and volunteers, each bringing unique skills and expertise. With a lean core staff supported by a robust volunteer network, we ensure smooth day-to-day operations. Our unwavering mission is to provide comprehensive care and support to every child fighting cancer in Zimbabwe.



**Daniel Mckenzie**  
Executive Director



**Gift Marunda**  
Finance & Administration Programs Manager



**Pamela Makanjera**



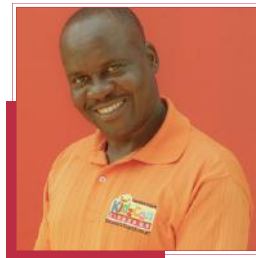
**Nyarai Machinda**  
Finance & Administration Officer



**Charity Kawadza**  
Health & Programmes Coordinator



**Franciscar Maripfonde**  
Social Worker



**Philip Hondokosa**  
Communications Officer



**Dimingu Banda**  
Health & Programmes Assistant



**Leona Nyadombo**  
Regular Volunteer



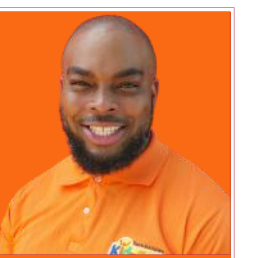
**Prince Madombwe**  
Health Programmes Assistant



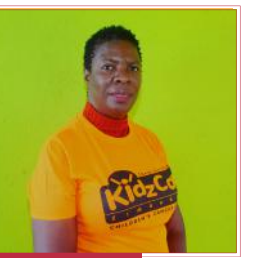
**Trish Kundiona**  
Assistant House Keeper



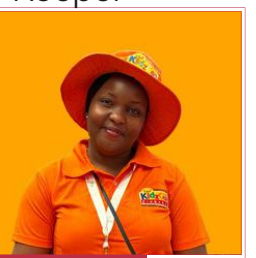
**Nedlia Chirovamhangu**  
Assistant Housekeeper



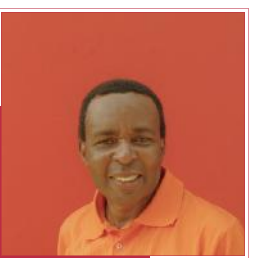
**Kudzai Mtomba**  
Chef



**Maureen Maradzika**  
Social work Intern



**Lianna Alfabeti**  
Administration Officer (Bulawayo)



**Kingston Musanhu**  
IT Consultant

## Challenges



### DRUG SHORTAGES

The ongoing crisis in drug availability posed significant challenges in ensuring continuous treatment for patients.



### FUNDING CONSTRAINTS

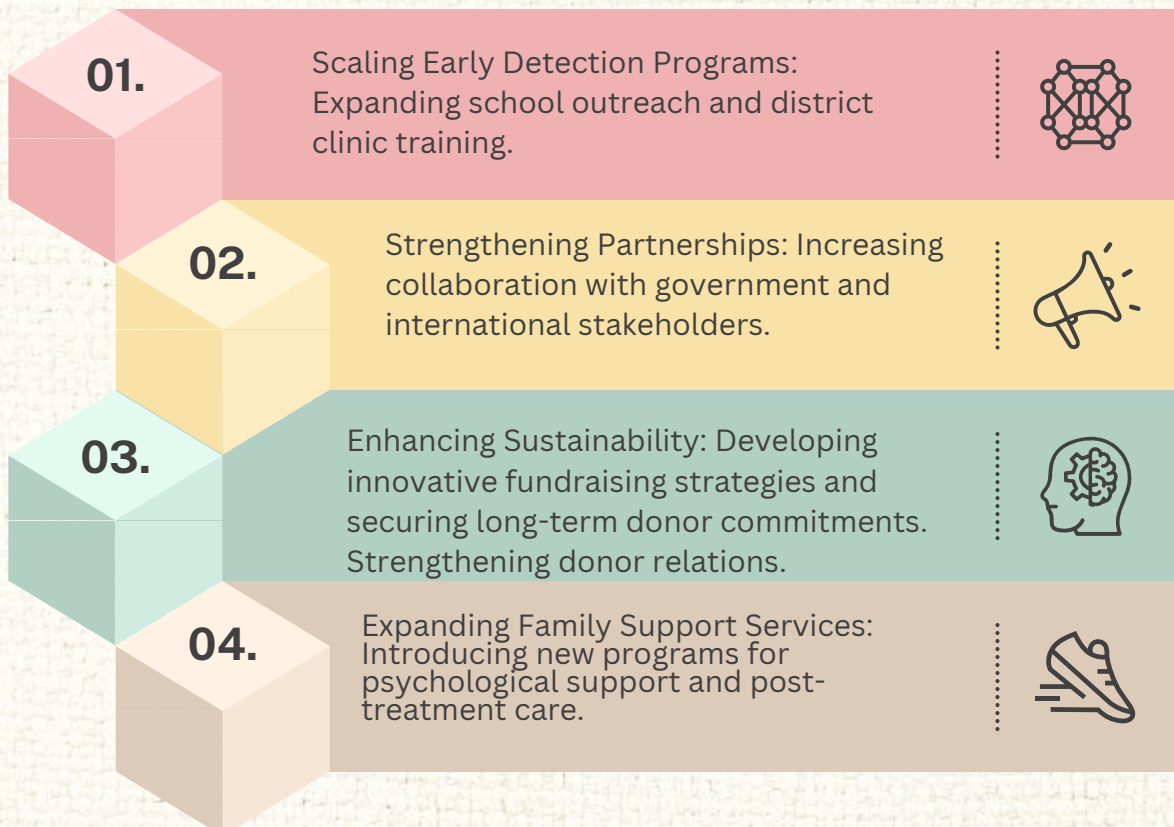
While we have secured critical support, sustaining our programs requires ongoing financial commitments.



### AWARENESS GAPS

Despite progress, childhood cancer awareness in rural areas remains low, necessitating further outreach initiatives.

## Future Plans & Strategic Focus Areas



# Clinical Report



## Delivering Exceptional Cancer Care

### Clinical Services

We are committed to providing high-quality cancer care to children in need. In 2024, we made significant advancements in our clinical services, reinforcing our dedication to exceptional patient care.

### Achievements

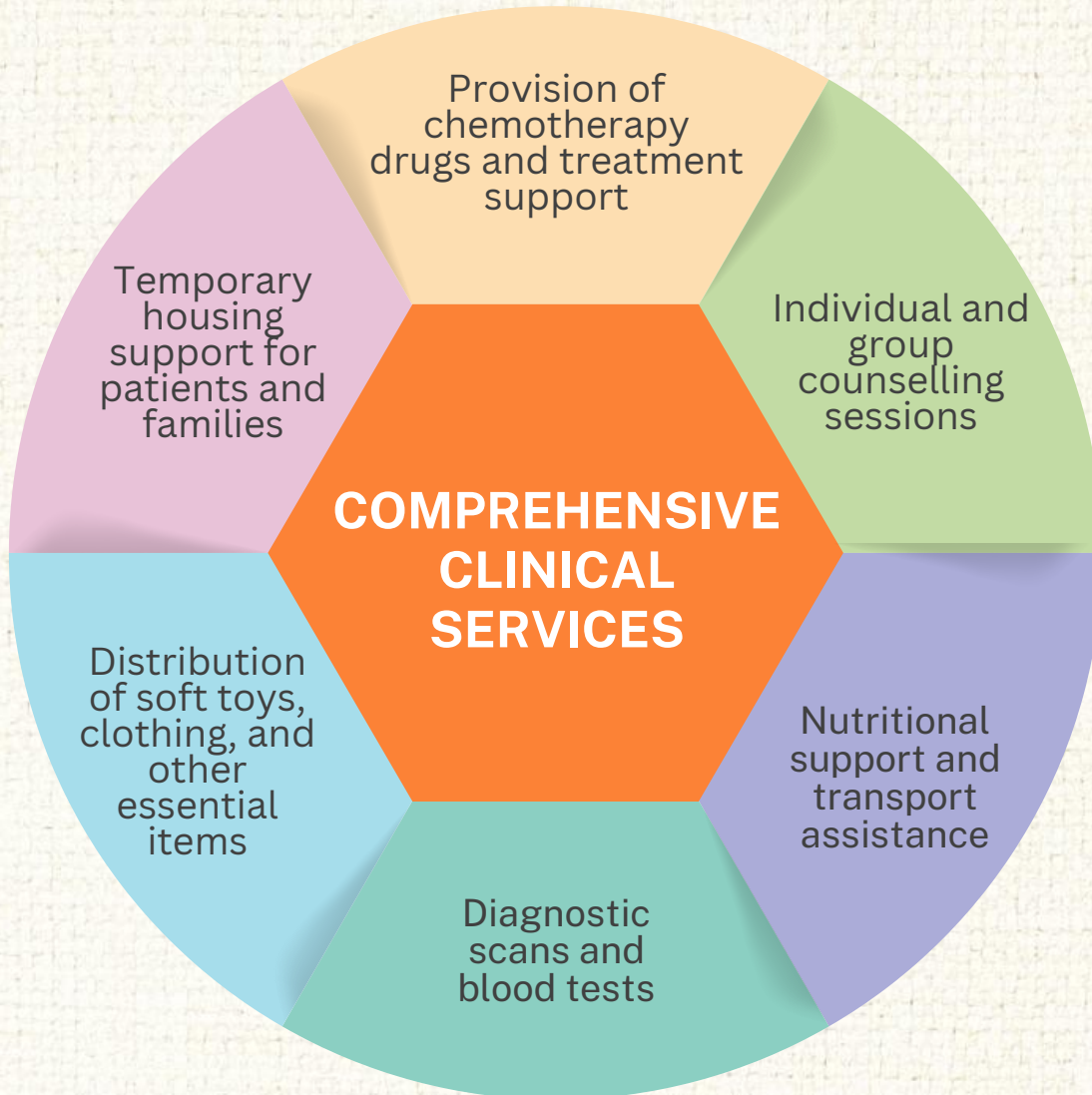
We have made remarkable progress in improving treatment outcomes, expanding services, and enhancing the overall patient experience. Through our collaboration with the Ministry of Health and Child Care at public hospitals, we have ensured that children receive quality medical care.



# Clinical Report



Our clinical services encompass a wide range of essential support.



These achievements demonstrated our commitment to clinical excellence and our tireless efforts to ensure every child received the best possible care.

## Social Services

In 2024, we continued to provide comprehensive support services, including counseling, advocacy, and practical assistance. This plays a vital role in supporting the holistic needs of our patients and their families.

**The top three childhood cancers in Zimbabwe are leukemia, Wilm's Tumour and Retinoblastoma. What are you doing to fight them?**

# Clinical Report



## Case Management

We provided expert case management services, ensuring that patients and families received seamless support throughout their journey with us. This included:

- Coordinating with healthcare teams to ensure comprehensive care planning
- Linking patients and families with community resources and support services
- Advocating on behalf of patients and families to access necessary services and benefits

## Psycho-Social Support

We offered individual counseling sessions, providing a safe space for patients and families to cope with the emotional and psychological impacts of illness. This included:

- Emotional support and counseling to manage anxiety, depression, and trauma
- Providing educational resources on coping strategies and stress management

## Palliative Care and Bereavement Support

We recognize the importance of palliative care and bereavement support for children with cancer and their families.

### Our services include:

- Emotional support and counseling for parents and caregiver
- Peer-to-peer support for children and their families
- Follow-up support for bereaved families
- Provision of food hampers and financial assistance (subject to availability of funds)
- Providing resources and support to help families navigate the grieving process

We also provide support for children with cancer who require radiotherapy treatment, although we face challenges in accessing this treatment due to financial constraints.

## February Orange Month



### February: Orange Month

In February, we observed International Childhood Cancer Awareness Month, a global initiative to raise awareness about childhood cancer. We utilized this opportunity to amplify the childhood cancer narrative, mobilizing communities, schools, and stakeholders to join the fight against this disease.

Through our awareness efforts, we:

- Partnered with 55 schools, potentially reaching over 110 000 individuals in households
- Expanded our outreach to various provinces across Zimbabwe, including the Midlands (Zvishavane), Manicaland (Rusape and Mutare), Mashonaland Central, East (Buhera and Mazowe), and Bulawayo
- Distributed information fliers to remote communities, promoting a culture of awareness and early detection

# September Awareness Month



During September, we intensified efforts to disseminate information and raise awareness about childhood cancer, driven by the Global Initiative for Childhood Cancer (GICC) vision to raise the survival rate to 60% by 2030.



**As KidzCan we are committed to raise the survival rate to 60% by 2030**

## Testimonials

### **Celebrating Ayanda's Triumph: 5 Years Cancer-Free**

We are thrilled to celebrate Ayanda's 6th birthday, marking a remarkable 5-year milestone since overcoming retinoblastoma, a rare and aggressive eye cancer. Diagnosed at just four months old, Ayanda's journey has been a testament to her resilience and determination.

With the support of KidzCan, Ayanda underwent numerous rounds of chemotherapy, demonstrating unwavering bravery throughout her treatment. Today, she is a vibrant grade 1 pupil, learning Braille and embracing life with enthusiasm. We extend our heartfelt gratitude to our donors, whose contributions have been instrumental in Ayanda's recovery and well-being. Your support has made a tangible difference, enabling Ayanda to receive life-saving treatments and celebrate this significant milestone.

As we celebrate Ayanda's triumph, we are reminded of the incredible strength and resilience of children facing cancer. Her story serves as a powerful reminder of the impact of community support and the importance of our mission to provide hope and healing to families affected by childhood cancer.



### **Langa's Unwavering Spirit: A Journey of Hope and Resilience**

In 2023, 12-year-old Langa's life took a dramatic turn when he was diagnosed with leukemia. Despite the challenges, Langa's family has been his rock, providing steadfast love and support. With KidzCan's assistance, Langa has undergone five cycles of chemotherapy, regaining his strength and freedom.

From being unable to walk to now radiating joy, Langa's transformation is a testament to his courage and determination. His dreams of becoming an aeronautical engineer and returning to the sports field remain unwavering, inspiring hope and resilience in the face of adversity.

Langa's story highlights the profound impact of love, support, and determination. Because of your support, Langa can dream again, and his journey serves as a reminder that with collective efforts, we can make a difference in the lives of children like Langa.

## Testimonials

### Sean's Journey to Hope

When 6-year-old Sean was diagnosed with osteosarcoma, his family's world was turned upside down. Despite facing amputation, financial burdens, and family separation, Sean's resilience inspired hope.

A compassionate stranger's miraculous donation cleared medical bills, and KidzCan stepped in to cover treatment costs, bringing relief to the family. Sean's story showcases the transformative power of community support and KidzCan's vital role in providing hope and healing.

Your support helps families like Sean's overcome the challenges of childhood cancer.



### A Triumph of Hope: Ronald's Journey with Childhood Cancer

A Triumph of Hope: Ronald's Journey with Childhood Cancer

In 2020, 10-year-old Ronald was diagnosed with osteogenic sarcoma, a rare and aggressive form of childhood cancer. After a 2.5-year battle, Ronald's family made the courageous decision to amputate his leg, choosing life over the relentless progression of the disease. Throughout this ordeal, Ronald's resilience and determination inspired all who knew him.

KidzCan Zimbabwe stood with Ronald and his family, providing vital support, including medication, psychosocial care, and critical resources. Our donors' generosity enabled Ronald to access comprehensive care, transforming his journey from uncertainty to triumph. Today, 14-year-old Ronald is thriving, embracing life with normalcy and happiness. His experience has ignited a dream to become an oncologist, driven by a desire to pay forward the kindness and compassion he received. Ronald's story embodies the impact of KidzCan's work, made possible by our donors' invaluable support.



# Financial Overview



KidzCan remains committed to financial transparency and accountability. The past year's funding was primarily sourced from international donors, corporate sponsorships, and fundraising events. Detailed Audited financial statements are available for scrutiny.

## Fundraising

### Fundraising: Empowering Hope

We are delighted to report a successful year of fundraising, thanks to the generosity of our donors, supporters, and partners. Your contributions have enabled us to:

- Expand** our outreach programs to reach more children with cancer
- Support** critical drug procurement and other services to improve treatment options
- Provide** emotional and psychosocial support to patients and their families

We extend gratitude to everyone who contributed to our fundraising success. Your trust and support have been invaluable in helping us achieve our mission.

### TM Pick n Pay's Strategy

Of note during orange month is TM Pick n Pay's intentional strategy to go big and contribute towards KidzCan fundraising and awareness goals through

#### Orange Plastic Bags

Selling orange plastic bags during February

01



02

#### KidzCan Writsbands

Stocking KidzCan Orange wristbands in all their 52 stores nationwide.

04

#### Awareness Posters

Putting up awareness posters on the 7 common signs and symptoms in their stores across Zimbabwe.

06

#### PicknPay - CABS Partnership

Partnering with CABS through their POS machines and CABS making a donation for every swipe transaction.

#### Hosting 5 Luncheons

Hosting 5 fundraising Luncheons at Saba Thai Restaurant every Thursday in February targeting corporates and high net worth individuals.

03

#### Zumba Session

Hosting a Zumba session at Madokero TM Pick n Pay attended by 400+ individuals.

05

# Fundraising Activities

## Hartmann House KidzCan Walk: Uniting Against Childhood Cancer

The 2nd annual Hartmann KidzCan Walk occurred on March 3rd, serving as a key awareness and fundraising program in the fight against childhood cancer. The event united parents, pupils, and the community, showcasing a heartwarming display of solidarity and compassion for children affected by cancer.



## Peterhouse KidzCan Walk: Stepping Up Against Childhood Cancer

On June 2nd, the Peterhouse community came together for the annual KidzCan Walk, promoting awareness, fundraising, and celebration in the fight against childhood cancer. The event was a resounding success, with students, families, and pupils showing their support and inspiring others to join the cause. Every step taken represented hope for a brighter future for children affected by cancer.



## Husqvarna Mud Run: A Triumph for KidzCan Zimbabwe

On April 6th, the Husqvarna Mud Run at Donnybrook raised an impressive \$61,000 for KidzCan Zimbabwe, marking the event's 12th consecutive success. The event brought together enthusiastic participants who tackled obstacles, tested their limits, and demonstrated unwavering teamwork. We extend our gratitude to Grant Mitchell, the event's mastermind, and all participants, sponsors, and volunteers who contributed to this remarkable achievement.



## Golfing for a Cause: Uniting Against Childhood Cancer Across Zimbabwe

Golfing for a Cause: Uniting Against Childhood Cancer Across Zimbabwe

In a remarkable display of solidarity, golfers in Harare and Bulawayo came together over two days to support the fight against childhood cancer. A combined total of 176 golfers participated in simultaneous events in both cities, demonstrating the power of collective action in pursuit of a common goal. We extend our sincerest gratitude to our generous sponsors, participants, and supporters for making this event a resounding success.



# Fundraising Activities



## Zimbabwe Cricket

In 2024 Zimbabwe Cricket demonstrated ongoing support for our mission by donating the Zimbabwe Pakistani match which was played at Queens Stadium in Bulawayo, allowing further engagements with our friends, partners and supporters in the region.

## TM Pick n Pay Zimbabwe and CABS Support Childhood Cancer Initiatives

We are grateful for the ongoing partnership with TM Pick n Pay Zimbabwe, who once again joined our Orange Month fundraising and awareness efforts. Together with CABS, they raised a combined US\$37,000 through cupcake sales across TM Pick n Pay's branch network. These funds were utilized to procure chemotherapy drugs for Parirenyatwa Hospital, supporting the treatment of childhood cancer patients.

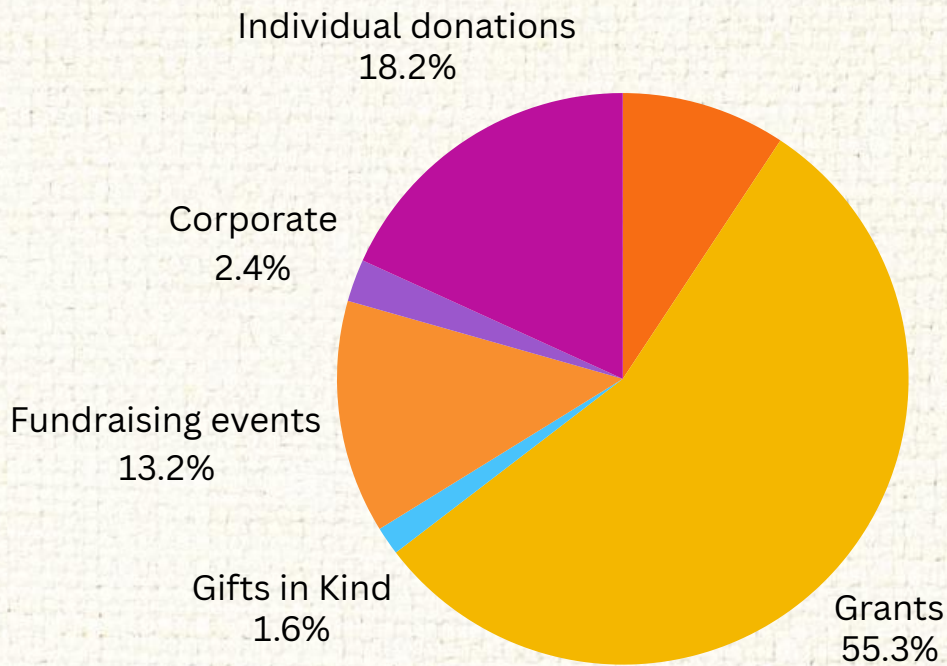


## KidzCan's 2024 Cocktails for Cancer:

We are proud to highlight the success of our 2024 Cocktails for Cancer event, hosted at ZIMOCO's showroom—graciously donated as the venue. This elegant evening not only raised \$7,400 for childhood cancer programs but also served as a milestone in recognizing the unwavering support of our partners.



# Fundraising Statistics



**HUSQVARNA  
MUDRUN 2024**

**\$61,106.00**

**KIDZCAN  
GOLF 2024**

**\$22,188.00**

**CABS &  
PICK N PAY  
PARTNESHIP**

**\$37,000.00**

# Capacity Building



## Healthcare Worker Training

In 2024, we continued our healthcare worker training program in Gweru, providing comprehensive training to 115 healthcare professionals, including nurses and community health workers. This initiative aims to enhance the skills of healthcare professionals in the early detection, treatment, and management of childhood cancer.

The training program, which is part of our efforts to streamline the referral system, focuses on the three most prevalent childhood cancers in Zimbabwe:

- Blood Cancer (Leukaemia)
- Kidney Cancer (Wilm's Tumour)
- Eye Cancer (Retinoblastoma)

By empowering healthcare workers with the knowledge and skills to identify and manage these cancers, we aim to improve treatment outcomes and save more young lives. This training program is a critical component of our strategy to combat childhood cancer in Zimbabwe.



## Medical Students Lecture

We oriented 30 medical students on childhood cancer, equipping them with knowledge on childhood cancer. By engaging them early in their careers, we ensure a lasting impact on the fight against childhood cancer and foster appreciation for KidzCans work.



## Media Workshop

In September, KidzCan hosted its first Media Workshop in September, bringing together 22 journalists and the Deputy Minister of Information. The workshop aimed to:

- Raise awareness about childhood cancer
- Equip journalists with knowledge to report on childhood cancer issues
- Foster media partnerships to amplify KidzCan's mission
- Encourage responsible reporting on childhood cancer stories

This event marked a significant step in KidzCan's media engagement efforts to positively impact children with cancer.



# Capacity Building

## Capacity Building Milestone: Executive Director Graduates from ALSAC Global Scholars Program

We proudly congratulate our Executive Director, Daniel McKenzie, on graduating from the prestigious ALSAC Global Scholars 2024 Executive Leadership Program at St. Jude Children's Research Hospital. This esteemed program equipped Daniel with advanced skills and knowledge to drive strategic growth and impact. His specialization in Succession Planning enables him to develop sustainable leadership pipelines, ensure seamless transitions, and build organizational resilience, reflecting KidzCan Zimbabwe's commitment to excellence.



## Historic Partnership: KidzCan Zimbabwe and Apostolic Council Church of Zimbabwe Join Forces

On May 11th, KidzCan Zimbabwe made history by signing a landmark Memorandum of Understanding (MOU) with the Apostolic Council Church of Zimbabwe (ACCZ). The signing ceremony, held at Mapisarema Apostolic Church in Zvishavane, was witnessed by over 314 Bishops from ACCZ. This groundbreaking partnership leverages the church's influence to raise awareness, promote early detection, and support the treatment of childhood cancer. Recognizing the church's role as an opinion leader, this collaboration marks a significant milestone in the battle against childhood cancer.



## ACCZ Training

The Apostolic Council of Churches of Zimbabwe (ACCZ) partnership marked a significant milestone in September with the training of three coordinators from Mashonaland West, Matebeleland South, and Midlands provinces on childhood cancer awareness and support. This equipped them with practical knowledge to cascade information and support in their communities.



## Raising Awareness at ZITF 2024: Thank You National AIDS Council

KidzCan Zimbabwe successfully participated in the 64th Zimbabwe International Trade Fair (ZITF) 2024, utilizing the platform to raise awareness about childhood cancer. We extend our deepest gratitude to our long-standing partners, the National AIDS Council (NAC), who graciously and generously hosted us on their stand, just as they have done in the past. Their continued support enabled us to share vital information with the public, amplifying our mission to combat childhood cancer.



## Activities

### Easter Handout: Sharing the Joy of Spring

The Apostolic Council of Churches of Zimbabwe (ACCZ) partnership marked a significant milestone in September with the training of three coordinators from Mashonaland West, Matebeleland South, and Midlands provinces on childhood cancer awareness and support.

This equipped them with practical knowledge to cascade information and support in their communities.



### Winter Handout: Wrapping Them in Warmth

Our winter handout program was a resounding success, delivering cozy essentials to our kids and showcasing the kindness of our supporters. We distributed jerseys, jackets, beanies, woollies, and blankets, ensuring our young beneficiaries stayed warm and comfortable during the chilly months.



### Survivors Day Commemorations

We successfully hosted two Survivors Day events, a milestone that showcased our progress in 2024. For the first time, we brought together 24 childhood cancer survivors from across Zimbabwe at our Rainbow Children's Village (RCV) premises in Harare.

We also extended the celebrations to Bulawayo, marking another first. The events were filled with joy, inspiration, and hope as survivors and caregivers shared their triumphant stories of defeating cancer. These commemorations stood as a testament to our impact and growth as KidzCan.



**"Cancer doesn't just hospitalize a child—  
Unlike most illnesses, childhood cancer: forces  
caregivers to be "admitted" too during their  
child's treatment**

# Acknowledgements

## Champion Spotlight:

1

### Dr. Ophard Mupanemunda

We are pleased to recognize Dr. Ophard Mupanemunda for his outstanding commitment to KidzCan Zimbabwe's mission. His dedicated support since our inception has been invaluable, and his tireless efforts to combat childhood cancer have made a lasting impact. We extend our sincere gratitude for his contributions.



2

### Honoring Our Heritage: Welcoming Back Pioneering Volunteers

We were delighted to welcome back Claire and Sally Taylor, visionary volunteers who played a pivotal role in shaping KidzCan Zimbabwe's early days. Their selfless dedication and compassion laid the groundwork for our mission to combat childhood cancer. Executive Director Daniel McKenzie acknowledged their enduring influence, noting that their kindness has created a lasting ripple effect of hope that transforms lives. We express our heartfelt gratitude for their contributions and the values they instilled in our organization.



Strengthening Partnerships: Visit from St. Jude Children's Research Hospital

3

### Piera Cescon Lesure

In February, we were honored to host Piera Cescon Lesure from St. Jude Children's Research Hospital ALSAC. During her three-day visit, Piera shared valuable insights on best practices for Sub-Saharan Africa fundraising initiatives and leveraging our partnership with St. Jude. Her expertise greatly enhanced our staff's knowledge and operational strategies, refining our approach to supporting children with cancer. The visit also included a joint outreach event at Barwick Primary School, coinciding with the launch of Orange Month.



Global Perspectives, Local Impact: Hosting Benjamin Olkers

# Acknowledgements



4

## Rodney Wong

Childhood Cancer International (CCI) President Rodney Wong and his wife visited Zimbabwe en route to the SIOP Conference in South Africa, aiming to strengthen partnerships and advance the fight against childhood cancer. During his visit, Wong toured the A4 Special Ward, engaging with hospital staff, before meeting with Deputy Minister of Health and Child Care, Sleiman Timios Kwidini.

5

## Benjamin Olkers

KidzCan Zimbabwe was honored to host Benjamin Olkers, a student ambassador from St. Jude Children's Research Hospital, during his 9-country tour exploring cancer care across cultures. Benjamin's visit reflected our organization's commitment to global collaboration and knowledge-sharing, enriching our mission to combat childhood cancer in Zimbabwe.



6

## Uplifting Visit: Sarah Dent Brings Joy to KidzCan

We were delighted to welcome Sarah Dent, a loyal supporter from the UK, who visited KidzCan after 24 years. Accompanied by our founder Andrea Whatman, Sarah brought joy and smiles to the children's faces with her thoughtful gifts. Her visit highlighted the profound difference her dedication makes in the lives of children with cancer. As a consistent donor and pillar of support during Orange Month and September awareness month, Sarah's love and generosity continue to have a lasting impact.





## Rainbow Children's Village

The **Rainbow Children's Village** which is a tripartite arrangement between KidzCan, Meikles Foundation, and Round Table, was established in October 2017. It was founded to provide a restorative home for children with cancer and their caregivers from disadvantaged communities. The initiative aims to address the many challenges faced by these families by offering a safe, supportive environment where young patients can recover, receive ongoing care, and recuperate from their treatments under proper supervision.

### Rainbow Children's Village (RCV) 2024 Impact Report

In 2024, the Rainbow Children's Village (RCV) served as a critical haven for families of children undergoing cancer treatment, delivering holistic care through:

#### Comprehensive Support Services

- **Accommodation:** Provided safe, free lodgings for families during their child's treatment.
- **Nutrition:** Served nutritious meals, ensuring families could focus on recovery without food insecurity.
- **Psychosocial Care:** Offered emotional support and counseling to parents/caregivers, helping them cope with the stresses of childhood cancer.



#### Behind These Numbers

- Every meal, bed, and counseling session was made possible by Donors who funded RCV's operations. Volunteers who cooked, cleaned, Dedicated Staff who worked tirelessly to create a nurturing environment.

“

# Rainbow Children's Village Statistics

		SUMMARY REPORT 2024: RCV PATIENT DATA
1	<b>No.of Days Occupied</b>	3, 232
2	<b>Available Bed Nights</b>	4, 644
3	Occupancy	70%
4	<b>Shortest stay</b>	1
5	<b>Longest Stay</b>	18
6	<b>Average Meals Provided</b>	9, 696
7	<b>Activities</b>	Mothers Day celebrations with Fab Fusion, Colouring, pot painting, basket weaving , attending Reps Theatre shows, Story telling , visit to the airport, Creamy Inn ice cream outing, outdoor movie day, games days , celebrity interaction with Gemma, celebrating different children's birthdays throughout the year , Christmas Tree decorating with the kids



## Partnerships & Listing

We deeply thank our valued partners who have stood with us throughout the year. Their unwavering support has been instrumental in enabling us to achieve our goals and make a meaningful impact. We're grateful for their contributions in various areas, including:

- Medical support and care
- Logistics and operational support, ensuring the smooth delivery of our programs
- Awareness-raising efforts, helping to amplify our message and reach a wider audience
- Grocery contributions, providing essential supplies for nutrition
- Security support, enabling us to operate safely and effectively in challenging environments

Their partnership has been invaluable, and we're honored to work alongside them. We're proud of what we've achieved together and look forward to continuing our collaboration in the years to come.

3ktv	Delta Beverages	Masana WaAfrica	Schweppes Zimbabwe
ABC Connect	Diamond Pharmacy	Mash Holdings	Simbisa Brands
Absolute Sports	DIC	Medtech Distribution	Skal International
Africa Albida	Diplomatic Spouses	Methodist Church in	Sky Pharmaceuticals
Africa Giving	Association	Zimbabwe Cranborne	SkyzMetro
Agripeak	Directpro	Minerva	St. Jude Children's
Alfresco The Bakery	Duskhome	Monte Rosa	Research Hospital
Alliance Health	Ecobank	Moonlight Funeral Services	Stanbic Bank
ALSAC	Econet	MERU	Star FM
AM Machado	Eco-Surgica	MSU Radio	Stirpole
Aura Group	Edgars Stores (JET)	Myriad	Strauss Logistics
Autoworld	Emeritus	Nashe Health Produce	Suburbs Squash Club
Avuxeni FM	Fab Fusion	National AIDS Council	Swift
Bakers Inn : Mr Chingwa/Mr	Fastjet	NEC Engineering	Taita Tyres
Singwa	Fedex Zimbabwe	NECMF	Tanganda
Belina Time Systems	Fidelity Life	Nemchem	The Boujee Gift Co
BCC Zimbabwe	First Link	New Avakash	The Brook Proshop
Bituman World	Garfankels	Newsday	The Brooke
Blackbox	Gas'n'Gear	NMB Bank	The Herald
Blush Cake Studio	Gelato Crema	Northside Community	Thornville Marketing
Body Active Gym	Global giving	Church	Tim Lewsey & Family
Body and Soul Men's Power	Greenvale Supermarket	Novafeeds	Tinkerbells
Strength Class	Haymaker	NRTV	TM Pick n Pay
Bon Marche	Health International Group	Nyaradzo Funeral Services	TN Asset Management
Boost Hail & Cotton	Health Zim	OAK Foundation	Toyota CFAO
Boost Tobacco	Hebron Art of Prayer	Onsdale enterprises	Trade Kings
Booties Pharmacy	International	Organiks	Tribac
Borrowdale Pharmacy	Henchworx	Pachikomo FM	Tropical Reinsurance
Bronte Hotel	Higherlife Foundation	Patrick Mavros	Tsebo
Bulawayo Country Club '	Highlands Presb Church	Polyfoil	TV Sales & Home
CABS	HMetro	Potential Hackers	Ulyssis Bikers
Caltex	Hockey Club	PPC	Valley Fresh
Capri	Hornung Park Club -	Premier Auto	Wattle Company
Catts Beaute	Husqvarna	Premium Leaf	WestProp
CCI-SIOP	Imara Capital	Priemier Travel	Whelson Transport
Cheetah Express	Jacaranda Music Festival	Principle Truck Sales	Winsome Made Events Zw
Cherry	Jet stores	Pro-Active Gym	Zaks Place Hotel
Church of Nazarene	KFC Zimbabwe	ProBottlers	ZB Bank
Civnet	Khulumani FM	Proton Bakers	ZBC National FM
Clavichord	Knightsbridge	Providence Human Capital	ZIFM
Colcom	Kuimba Home Gifts	Radio Bukalanga	Zimbabwe Cricket
Comtex	Lancet	Radio Kings	Zimbabwe Competition and
Cotecna	Lions Club of Gunhill Harare	Reliance Media	Tariffs Commission
Cresta	LNA Stationers	Reps Theatre	ZIMOCO
Cropserve	Londoners Nite Club	Rooneys	ZTV
DailyNews	Lighthouse Printing	Samburn	ZUVA Petroleum
Damara Bioagri			

# Partnerships & Listing

Ariel School  
Arundel School  
Baby Sensibility  
Barwick School  
Bells & Bubbles Child Care  
Centre  
Bishopslea Preparatory  
School  
Bryden Country School  
Bush Babies Nursery School  
Canonbury Junior School  
Carmel School  
Celebration International  
Chisipite Junior School  
Chisipite Senior School  
Denby Nursery School  
Dingly Dell Nursery  
Dominican Convent  
Bulawayo  
Dominican Convent Harare  
Eaglesvale High School  
Eaglesvale Prep school

Forest Academy  
Gateway Primary School  
Harare International School  
Hartman House  
Helenic Academy  
Hellenic Nursery School  
Hilllight College  
Hillview Christian College  
Kutama College  
Kyle College  
Ladder of learning  
Lil Scholars Academy  
Lilifordia School  
Little Eaton School  
Little Footprints  
Little Legends Nursery School  
Little People  
Little Rock International  
Live and Learn  
Living Stones School  
Lomagundi Primary  
Lusitania School

Midlands Christian College  
Mubeena Ibrahim School  
Murray MacDougall School  
Mutendi Montessori  
Mvurachena Junior School  
Nattie Group of Schools  
Newton Schools  
Penhalonga Prep school  
Peterhouse Group of Schools  
Petra Junior  
Rainbow Pre-school  
Riverdale Academy  
Ruzawi School  
Samuel Centenary Junior  
Sharon School  
Silioam Academy  
Solomon's Academy  
Squiffle Tats Daycare  
St Johns  
St Johns Iteract Club  
St Johns Prep School  
St Michael's School

St Georges College  
St. James Academy  
Star Kids Infant School  
Step Ahead Nursery  
Techno Junior School  
The Cradle Infant School  
The Gingerbread House  
The Good Samaritan College  
Tiny Troppers  
Tiny Turtles  
Tots Academy  
Twin Rivers  
Tynwald Primary  
Victoria Falls Primary School  
Watershed College  
Westridge  
Whitestone School  
Windsor Park Learning  
Centre  
Windview School  
Wise Owl Pre-Schools  
Wise Owl Primary School  
Zulukandaba



# Partnerships



## Community-Wide Support: A Collective Effort

In addition to our major partners, we are profoundly grateful to the numerous schools, churches, businesses, and grassroots organizations across sectors that have stood with us in 2024. Their contributions—whether through donations, awareness campaigns, or in-kind support—have been the backbone of our mission.

### Key Sectors & Contributions

**Schools**

**Faith-Based Organizations:**

**Corporate Allies:**

**Food & Retail**

**Agriculture & Market Gardening**

**Health Services:**

These partnerships embody the spirit of collective action. As we scale our impact, we remain committed to fostering innovation and sustainability in childhood cancer care



## More Information About Us



## Contact Us :



[www.kidzcanzimbabwe.org](http://www.kidzcanzimbabwe.org)



[Kidzcan.Zimbabwe](https://www.instagram.com/Kidzcan.Zimbabwe)



[Kidzcan\\_Zimbo14](https://twitter.com/Kidzcan_Zimbo14)



[Kidzcan Zimbabwe](https://www.facebook.com/Kidzcan.Zimbabwe)



[Kidzcan Zimbabwe](https://www.linkedin.com/company/Kidzcan.Zimbabwe)



**+263242255738/9**



Email Address  
**[admin@kidzcanzimbabwe.org](mailto:admin@kidzcanzimbabwe.org)**



Office Address  
**111 East Road , Belgravia , Harare**