

FOUNTAIN OF HOPE ASSOCIATION

PROGRAMME INFORMATION



FOHA

ZAMBIA

©Fountain of Hope Association

Prepared by:

ROY CHISHA

Manager Accounts & Administration





Content

Page

Word from the board chairperson	5
Who we are	6
Our Vision	8
Goal	9
Mission	10
Objective	11
Our programmes	14
1. Feeding	15
2. Health programme	15
3. Education Programme	15
4. Library & Art Programme	16
5. Outreach Programme	16
6. Sports and Recreation programme	16
7. Mothers programme	17
Our Partners	18
Staff	19
Organization Chart	22
Board of Directors	23
Feeding Programme	
Clinic * health programme	28
Education programme	33
Library & Art programme	37
Outreach programme	42
Sports & recreation programme	50
Mothers Programme	56

WORD FROM THE CHAIRPERSON

It gives me a great pleasure to present you this document on programme information about Fountain of Hope. We have included some of the achievements in the programmes that were undertaken by Fountain of Hope for the year ended 2010.

It is an acknowledged fact the children are the building blocks of any nation, and as such deserve special attention and recognition at all levels of society. The government of Zambia attaches great importance to uplifting the lives of the vulnerable women and children.

Children in Zambia continue to suffer violence, abuse, neglect and exploitation every day. All these vices are human rights issues that should not be tolerated. It is an issue that cuts across all cultures and societies. Reports indicate that children experience violence in all the setting in which they spend their childhood and these include: their homes, school, and communities. Children, as people, should receive no less protection than adults. They have to be cared for in order for the country to have a productive future.

The effect of street children can be devastating. However, society has for a long time chosen to remain ignorant or overlook both the short term and long term effects that any kind of abuse can have on children. Society needs to believe that any kind of abuse against children has in some cases resulted in children becoming violent, and some die. However, even children who have survived any kind of abuse, anger and other problem that make them go on the street have had to cope with the terrible physical, psychological and emotional scars. It robs children of the opportunity to grow into adults who can create and maintain sound families and communities. In order to prevent this, there is need to call for active participation of all levels of society.

I would like to take this opportunity to thank all the staff, the children and partner organizations working to ensure that children meet their potentials, individuals and government departments for the wonderful support that they have been rendering to ensure that the lives of Street Children are uplifted



Miss. Charity Chileshe
BOARD CHAIRPERSON





Priscilla Locha

ACTING EXECUTIVE DIRECTOR

We would like to welcome you to Fountain of Hope Association. Our organization was established in 1996. We provide basic services to orphaned and vulnerable children drawn from the streets. We also put emphasis in running programmes to prevent drifting of children to by identifying vulnerable children at risk of drifting to the streets early through early warning systems measures we have incorporated in our programmes.

We are also a screening centre for several orphanages in Zambia and our outreach programme is the most unique and one of the oldest and experienced in Zambia. Part of our outreach staff are former street kids themselves.

Fountain of Hope has never closed since it started in 1996 and our programmes are interrelated. We run programmes aimed at prevention and mitigation.



Roy Chisha

MANAGER - FINANCE & ADMINISTRATION

Welcome to FOHA. Our programmes are financed by organizations and individuals in Zambia and across the world. We put emphasis on rehabilitation and reintegration of children back to communities. All these exercises cost money.

When children are drawn from the streets, they live at Fountain of Hope for 3 to 6 months before they are reintegrated. They need a lot of basic needs. We provide them with food, education, health, shelter, library services and sports and recreation.

To provide these things we need strong and reliable partnerships with donor. We formulated a strategic plan in 2010 which was Financed by Firelight Foundation. We hope it will help us find a long term funding partner for the next three years.

WHO WE ARE

We are a leading Zambian Non- Governmental Organization established in 1996 working to uplift the lives of Orphaned and Vulnerable Children [O.V.C.s] drawn from streets and those at risk of drifting to the streets from communities in Lusaka & Zambia at large. We run programmes in partnership with various stakeholders to provide Feeding, Education, Sports & Recreation, Clinic (Health), Outreach, Library & Art and Women (Mothers) Empowerment Programme.



FOHA

ZAMBIA

©Fountain of Hope Association



VISION

**To ensure children enjoy their rights
and become responsible citizens.**



GOAL

To contribute to the reduction of children living and risk of drifting to the street.



MISSION STATEMENT

To empower orphans, streets children and out of School Children to become healthy responsible citizen through the provision of basic education and practical life skills by strategic partnerships and focused programmes through dedicated personnel.

OBJECTIVES

- To provide a secure and safe environment for 400 children at risk withdrawn from the street of Lusaka 2013.
- To provide street based outreach programmes to children working and living on the streets.
- To build capacity of 1,000 vulnerable households with viable livelihoods by 2013
- To strengthen programme implementation and systems of FOHA staff

For the past 15 years, we have been providing services to orphans and vulnerable children that drift to the streets. Our programmes are aimed at **PREVENTION** and **MITIGATION** of children drifting to streets.

PREVENTION

The programmes we run are interrelated. The Sports & Recreation programme, Education Programme, Library programme Feeding programme are run to keep children in communities busy and prevent them from drifting to the streets.

MITIGATION

The outreach programme is run to rescue children [living and working] from the streets. The Women Empowerment is run to empower women to be self reliant and be able to provide for their families. By being able to provide for their families they reduce the number of children drifting to streets.

OUR LOCATION

Lusaka – Zambia /Central Africa

Our operations are in Lusaka Zambia and we reintegrate children across the country.



Our Programmes

FEEDING



CLINIC & HEALTH



MOTHERS PROGRAMME



COMMUNITY SCHOOL



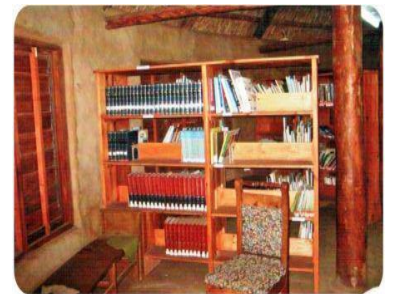
SPORTS & RECREATION



OUTREACH PROGRAMME



LIBRARY, OLPC & ART PROGRAMME



FOUNTAIN OF
HOPE
ASSOCIATION –
FOHA

Est. 1996

**FOUNTAIN OF HOPE ASSOCIATION RUNS SEVEN (7) PROGRAMMES.
THE PROGRAMMES ARE AS FOLLOWS;**

1. FEEDING PROGRAMME

We provide feeding to children from the streets, children resident at Fountain of Hope and children from surrounding Communities attending our programmes.



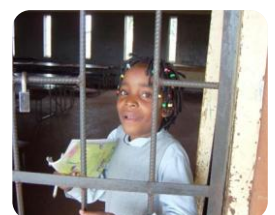
2. CLINIC & HEALTH PROGRAMME

We provide health services to street kids and other vulnerable children. Fountain of Hope runs a clinic for street OVCs which is situated inside the organization premises. We also provide health services on the street.



3. EDUCATION PROGRAMME

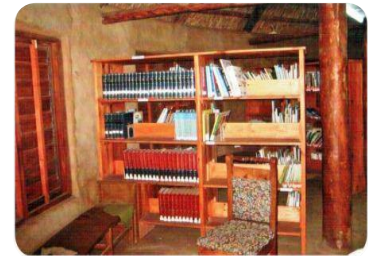
Fountain of Hope Community School offers free education to the most vulnerable



children from the the street and surrounding communities.

4. LIBRARY & ART

Children from street, that resident at Fountain of Hope, those attending the community school including children from the surrounding communities can access the library free of charge. Children are able to acquire literacy skills.



5. OUTRACH PROGRAMME

Our outreach team recues children from the streets and takes them to Fountain of Hope. They also reintegrate children after rehabilitation back to families in communities.



6. SPORTS & RECREATION PROGRAMME

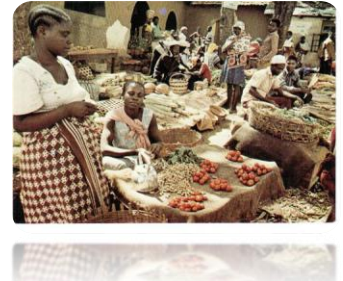
We sports and recreation to children resident at Fountain of Hope and those coming from the street and community. Children participate in the following



sporting disciplines; Football, Netball, Volleyball, Basketball

7. MOTHERS [EMPOWERMENT] PROGRAMME

The women empowerment programme is run to empower women set up small businesses so that they could be self reliant and provide for their homes. One of the reasons children drift to the street is due to lack of food and other basic necessities in the home. Women set up businesses such as selling second hand clothes, selling vegetables, sewing & knotting, making and selling blocks



Partners of Fountain of Hope in 2010



**Supported, Education, Clinic,
Outreach, Administration,
Feeding all programmes**



**Ministry of Sport Youth & CVhild
Development
Supported Feeding, Outreach, Sports &
Recreation**



**Supported Women
Empowerment, Outreach,
Education, Administration**



**Supported Sports & Recreation,
Football, Netball, Basketball,
Netball, Volley ball,**

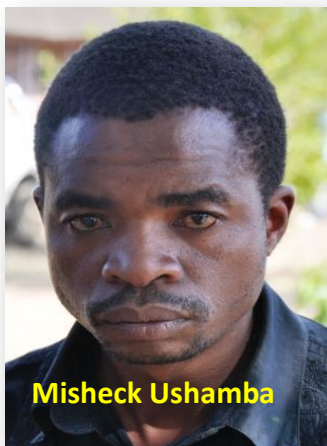
Mission Direct (UK)

**Supported Outreach,
education, Feeding, Clinic**

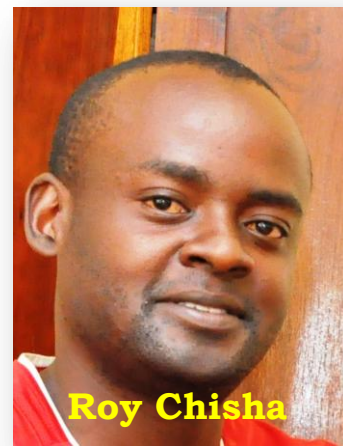
EBENEZER FOUNDATION



Bridget Namwila



Misheck Ushamba



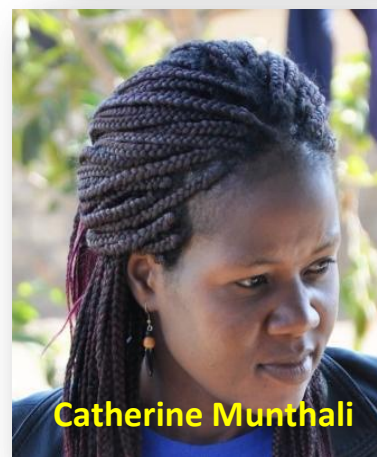
Roy Chisha



Priscilla Locha



Perony Mweemba



Catherine Munthali



Royd Mutaka



Francisca Milimo



Elija Kabeka



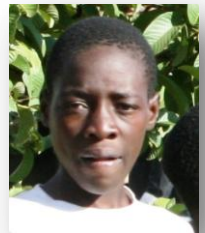
Staffson



Annie Mbewe

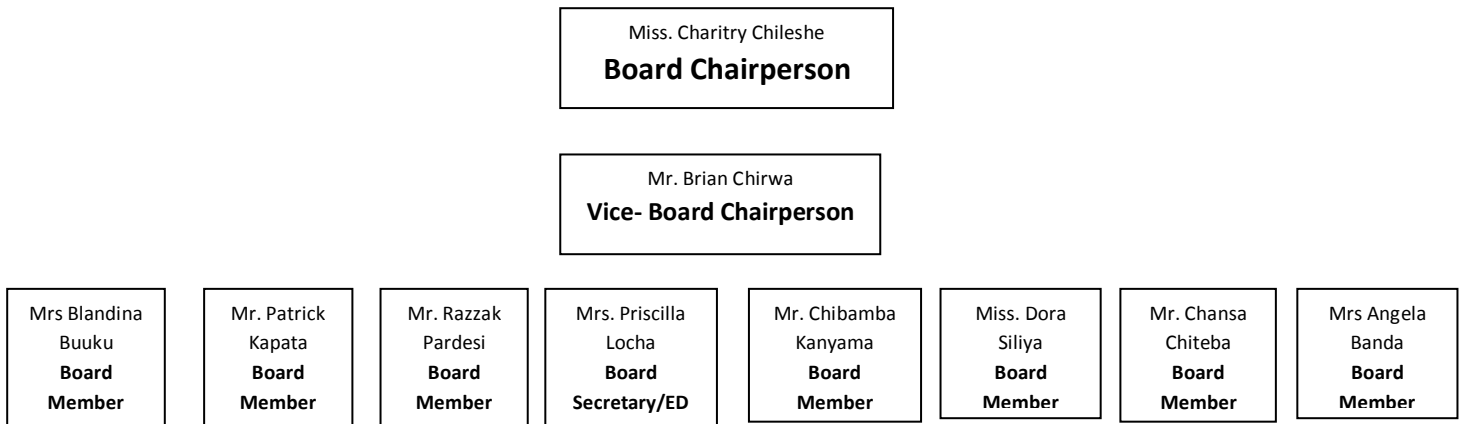
Staff in
2010



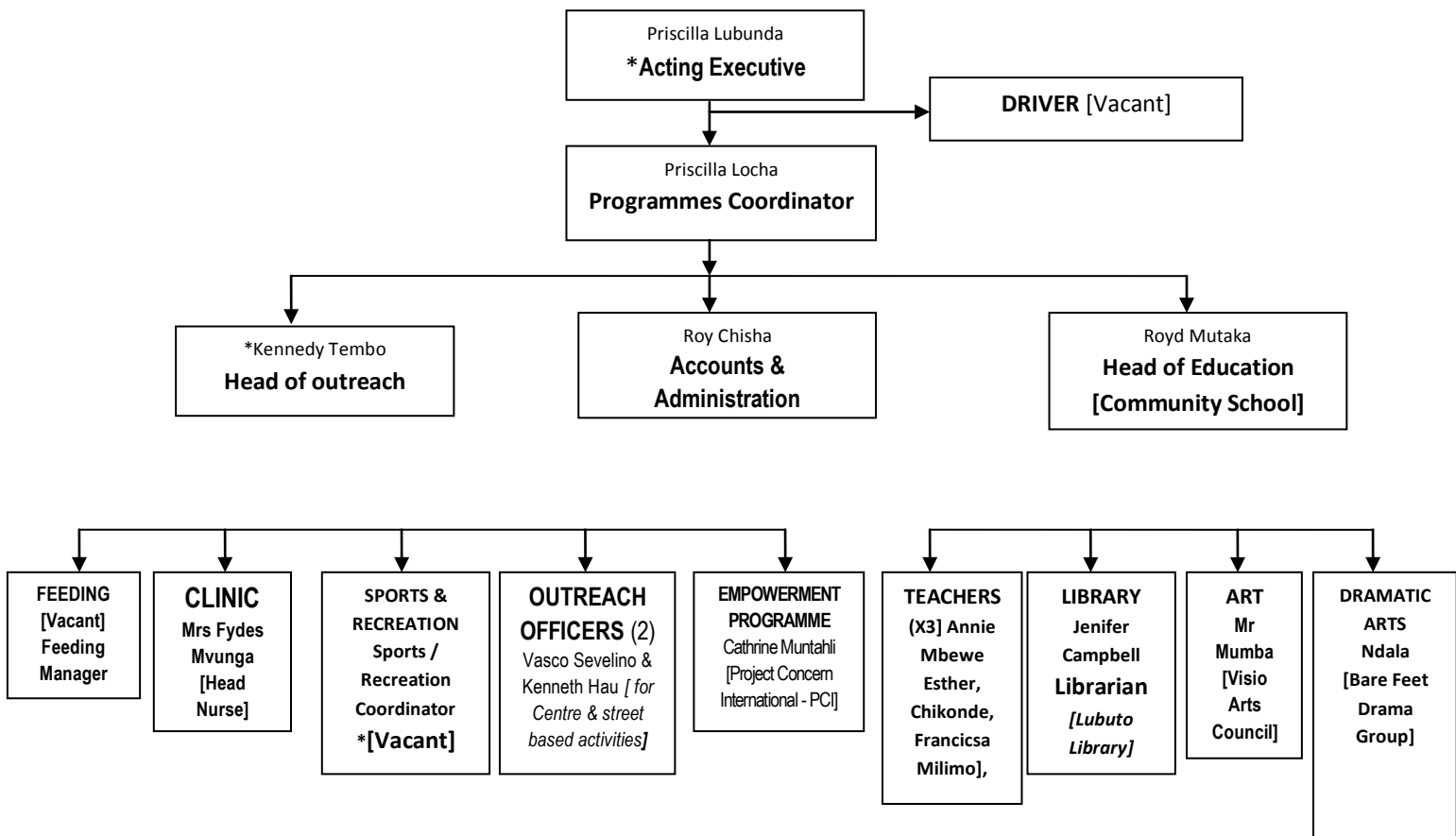


ORGANIZATION CHART

FOUNTAIN OF HOPE BOARD OF DIRECTORS



MANAGEMENT



GENERAL WORKERS /Joyce Kamboye

BOARD OF DIRECTORS

1. Miss. Charity Chileshe (Outgoing Board Chairperson)

Miss Charity Chileshe is a Social worker at the university Teaching Hospital in Lusaka. She has served the board of Fountain of Hope as board chair. She is outgoing board chairperson of Fountain of Hope.

2. Mr. Brian Burton Chirwa (outgoing Board Vice-Chairperson)

Brian Burton Chirwa is outgoing Board Vice Chairperson. He is Director of Evaluation at The Ministry of Local Government and Housing.

3. Mrs. Blandina Witika Buuku

Mrs Witika Buuku is Assisitant Director Humana Resources at the Ministry of Youth Sport and Child Develoipment

4. Mr. Patrick Kapata

Mr Kapata works as a Spokesperson for the Lusaka City Council.

5. Mrs. Angela Banda

Mrs. Angela Banda is Ward Chairperson for Kamwala ward, the area where Fountain of Hope is situated.

6. Mr. Razzak Sattar Pardesi

Mr. Razzak is Director for Nasla Industries Ltd, Nasla Chemicals Ltd, Nasla Footwear Ltd, Nasla Cement Ltd, The point Shopping Mall and the Dome Shopping Mall. He is also the chairman of the Hindu Association.

7. Miss Dora Siliya

Miss Dora Siliya is Minister of education in the Ministry of Education of the Government of the republic of Zambia.

8. Mrs. Priscilla Locha (Secretary & Executive Director)

Mrs. Priscilla Locha is Executive Director of Fountain of Hope Association.

9. Mr. Chansa Chiteba

Mr. Chansa Chiteba is the President of the Rotary Club of Lusaka

10. Mr Chibamba Kanyama

Mr Chibamba Kanyama is the Corporate Affairs Director for the Zambia Breweries PLC.

WELCOME TO FOUNTAIN OF HOPE ASSOCIATION



ESTABLISHED IN 1996

FEEDING PROGRAMME



Fountain of Hope feeding programme began as one of the outreach activities in 1995 to provide feeding to children living on the street. The Children were gathered at Feeding points everyday where volunteers would give them food and drinks lobbied from restaurants, bakeries take aways and other outlets. Today, the feeding programme caters for several children resident at the centre, children coming from the community attending programmes at the centre and children coming from the streets.



Mrs. Catherine Sianga
FEEDING STAFF

THE PROBLEM

Children on the streets have nowhere to get food decent food. They have to make to buy food in order to survive. Begging for money is one of the major activities that give them money to buy the food they need.

Lack of food contributes to poor health of children and lack of concentration in class for children coming from poor families attending the community school.

THE SOLUTION

Fountain of Hope staff work with several children living and doing chores on the street. From time to time children come to Fountain of Hope to eat. Food is offered free of charge. Three meals are offered every day.

The Ministry of Community Development and Social Services (MCDSS) had been buying food for Fountain of Hope for the past three years including payment of allowances to feeding programme staff and other volunteers.

However, in May 2010, the MCDSS informed Fountain of Hope that it had inadequate funds to continue supporting Fountain of Hope Feeding programme and payment of Staff salaries. This meant that Fountain of Hope had to find resources and other partners to provide funding and food to continue feeding the children.

"..We have a big challenge to continue to provide food. Lack of Food in the home is one of the reasons why children drift to the street. We have managed to feed a lot of children and improve their well being as a result"

In 2010, there was a reduction in the number of children being kept at the centre and volunteers went with no allowances for some months. The number of children coming to the centre to also reduced drastically from 120 per day to 76 per day.

However, Fountain of Hope partners managed to support the organization materially. These partners include the Lusaka Hotel, Pamodzi Hotel, Sport In Action, Mission Direct, Pentecostal Assemblies of God (PAOG), Standard Chartered Bank.

COOKING

We have two electric cookers that we use for cooking. However, we also use charcoal and firewood.

SOURCES FOR FOOD

We get food from different sources. Sometimes people and organizations donate food for feeding children.

Fountain of Hope is in the process of developing a farm where food will be grown to feed children. This is being done with the support of Mission Direct. A UK based organization



supporting charitable organization with establishing project from which to generate income to run programmes.

Once the farm starts running there will be adequate food and finances to run programmes.





Working with



CLINIC & HEALTH PROGRAMME

Mission Direct (UK)

Established: 1996



Targeted at

- Street kids
- Children from vulnerable Households
- Children under the age of 5

CLINIC & HEALTH PROGRAMME



Fountain of hope Clinic was established as one of the programmes at the centre to provide health care to Orphaned and Vulnerable Children (OVCs) especially those living on the streets.

THE PROBLEM

At the height of the emergence of the problem of street kids in Zambia, there were many deaths of children living on the street. They needed access to clean water, food, shelter, comfort, relationships, clothing and other basic needs. Lack of these basic necessities meant that they were exposed to several vices to harm their physical and mental wellbeing. There were also a growing number of children taking drugs, alcohol and cigarettes.



There were also a high number of body injuries arising from fights. Other serious injuries arose from speeding motor vehicles hitting the children begging at the centre of the road or trying to cross roads while under the influence of drugs.

THE SOLUTION

The Fountain of Hope clinic was established specifically to provide healthcare to street children and over the years, the clinic has saved over 123,000 lives since 1996.

Fountain of Hope clinic is the preferred clinic for street children and it has a dedicated and experience staff. The clinic staffs are dedicated to attending to children and provide quality health care including referrals to other clinics and hospitals were necessary.

SERVICES OFFERED

Fountain of Hope Clinic caters for the children who come from the street, and the surrounding communities. The clinic is operated under a nurse and a nursing assistant. The services offered include the following;

- Medical screening
- Counseling
- under five checking
- Under five Vaccination Injections
- Referrals.
- HIV testing

NEW SERVICES INTRODUCED IN 2010

New services introduced in 2010 included the following;

- B.P. checking
- Antenatal
- Family Planning
- Pregnancy testing

COMMON AILMENTS TREATED IN 2010

Some of the ailments children came with at the clinic include the following;

- Malarial
- Head ace
- Drug addiction
- Body rush
- Skin infections
- Fever
- Diarrhea
- Sexually Transmitted Infections (STIs)
- Stab wounds

SUPPORT RECEIVED IN 2010

During the year 2010 Fountain of Hope received Clinic received support from Mission Direct. The support was in form of medicine, equipment and funds.



Fountain of Hope also received funds from Firelight Foundation in the USA for Medicine and salaries for health staff working in the Clinic.

INTERNAL SOURCES OF INCOME IIN 2010

Traditional sources of income for Fountain of Hope clinic remained the fee paying services offered to mothers and babies. The services include under 5 vaccinations that are charged at K1, 500 and weighing also charged at K1, 500 (USD 0.33 Cents)

STAFFING

The clinic was run throughout the year by two staff. Mrs. **Fydes Mvunga** is the Fountain of Hope Nurse. She is a retired government trained nurse (midwife). She is assisted by **Osborn Chamutanda** (Nursing assistant).



During the year, Fountain of Hope clinic received volunteers who came from Durham University on attachment.

SUCSESSES IN 2010

We recorded a number of successes during the year in review

- In 2010, we received assorted medical supplies from mission Direct Team in (UK) and had technical support from overseas volunteers from Durham University(UK) who worked in the clinic for 4 weeks in July 2010 and August 2010.
- New equipment was received from Mission Direct: these included digital thermometers, microscope and B.P. machine
- There were 2,795 referrals (of ill children) to other health centers and no child died at the clinic.
- 5,686 were treated at the clinic.
- 2,960 received counseling



CHALLENGES

There were a number of challenges too.

- Increased number of children to cater for
- Lack of adequate medicine and equipment needed for the clinic
- Lack of funds to pay salaries to volunteer
- Lack of capacity to handle complex cases
- Children seeking medical attention
- Increase in the number of STI case

WAY FORWARD

In 2011 we hope to increase access to health care for all Vulnerable Children from the streets. We hope to increase the number of children accessing health services now that Fountain of Hope has a strategic plan.

The clinic will work closely with the outreach team in order to increase the identification of children from the street in need of health services.

We hope to increase sexual reproductive health sensitization among street children.

We need to find resources to start Mobile Health Clinic.



EDUCATION PROGRAMME

FOUNTAIN OF HOPE COMMUNITY SCHOOL

Since 1997



Targeted at

- Children drawn from the street
- Children from vulnerable households in the community
- Orphaned children
- Children being rehabilitated

EDUCATION PROGRAMME



Fountain of Hope community school was established in 1997 to offer basic education to street / orphaned and vulnerable children. The school started with two teachers and 20 pupils. Today, it has 412 children attending the community school being run by 5 teachers.

The school offers education from grade 1 to 7. It has children coming from different vulnerable backgrounds. These backgrounds include the following;

- 1. Children living on the streets but who came to learn at Fountain of hope Community school*
- 2. Children coming from poor families from the community*
- 3. Orphaned Children from the community (Children whose parents have died due to HIV / AIDS)*

THE PROBLEM

There are a lot of children I need of education. The loss of parents due to HIV / AIDS has left most children vulnerable and at risk of being exploited in child labour and prostitution.



Children from the street and other children coming from poor families in the community attend Fountain of Hope School because they do not have to pay school fees.

Because of the poverty and other negative circumstances at home most children are



".. I believe that children are the leaders of tomorrow and we have to offer good quality education if we are to make good leaders of tomorrow"

Royd Mutaka
HEAD TEACHER

Fountain of Hope
Community School

[Royd Joined fountain of Hope
Community School in December
2010.]

unable to lead normal lives and decide to flock to the streets for a source of a livelihood and to pass time.

There are a high number of children who have lost both parents due to HIV / AIDS. Most of these children have to find means to provide for their families and have to stop school. Fountain of Hope has several programmes designed to mitigate the social economic impact affecting the day to day live of every child. One of them is the education programme that is designed to give children hope and a new lease of life. All our programmes are based on restoring hope. There is a large number of homeless children living on the streets and Fountain of Hope targets these children for enrollment in Fountain of Hope Community School. These are referred to as Children of the street because they consider the street to be their home. They sleep in bridges, Market stalls, abandoned vehicles,

Above: a typical environment where children of the street spend their time and do most of their activities from.



Most of the children are on the streets as a result of being orphaned at an early age and have no sense of belonging. They develop survival skills on the streets coupled with drug abuse which make them able to cope under very difficult conditions.

It is the job of the outreach staff to begin the process of rescuing these children from the dangerous environment by developing friendship and rapport before bringing them to Fountain of Hope.

Some of the children would like to continued with their activities on the street like washing cars, doing small odd jobs in order to continue earning some income a whilst attending school.



There are children coming from child headed households that are supported by churches and other well wishers. Fountain of hope comes in to provide free education, free educational materials and school sponsorship for those that are in fee paying schools.

Since the establishment of Fountain of Fountain of Hope community School, several children have benefited from free education the school offers.

SUPPORT RECEIVED IN 2010

Fountain of Hope did not receive any financial support from the Ministry of Education (Zambian Government). It had to rely on partners to fund the education programme. The partners that rendered support for the community school included the following;

- Mission Direct a UK based charitable organization that funding educational materials
- Firelight Foundation a US based organization that provided support for Educational Materials, school fees and educational tour.
- Ebenezer foundation who provided school support to sponsor children that are in high schools
- Ministry of Youth Sport and Child Development who provided fun





Working with **LIBRARY PROGRAMME**



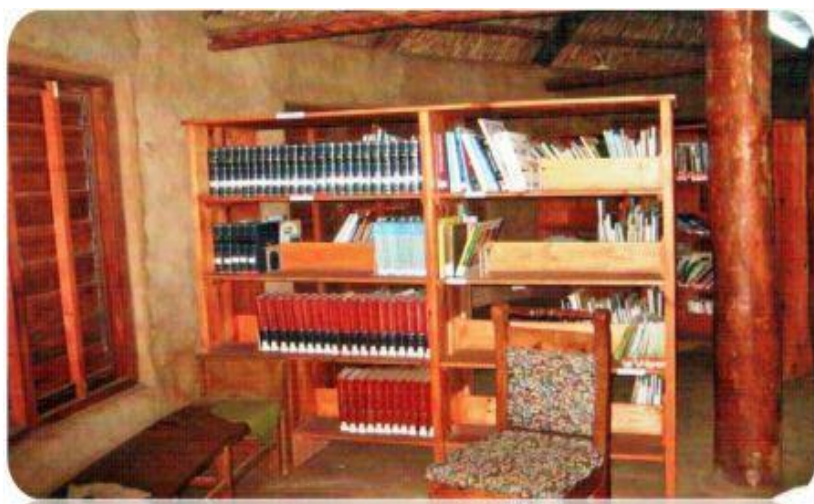
Lubuto Library Project



Targeted at

- Children drawn from the street
- Children from vulnerable households in the community
- Orphaned children
- Children resident at the Fountain of Hope

LIBRARY & ART PROGRAMME



Lubuto library Project is indeed giving light to the most vulnerable children not just from Fountain of Hope but from the surrounding communities.

THE PROBLEM

Most children on the street lose out on time to acquire knowledge and literacy skills as a result of the environment they find themselves. In the communities too, children learn in schools where there are no library facilities.

There are also very few local publications targeted and children and children need knowledge on a variety of subjects in this fast moving world.



Eliza Kabeka

Library Manager

“... I enjoy working in the library and helping the children to learn to read and their lives become better where they are able to learn and do things by themselves”

Elijah Joined Lubuto Library on 28th May 2010.



Children need knowledge on computers, plants, politics, machinery, religion, the universe and many other topics.

THE SOLUTION

Lubuto library was established by our partner Lubuto Library Project. The library was established to cater for the needs of orphaned and vulnerable children from the street and children coming from poor families in surrounding communities. Lubuto means 'light' [to illuminate]. The library promotes literacy, computer knowledge, and visual arts among others. Membership in the library is free of charge and children from other schools are also free to use the library.

SERVICES OFFERED IN 2010

Lubuto continued to offer quality library services in 2010. They expanded their services to Ngwerere basic school where they opened a second library in November 2010.

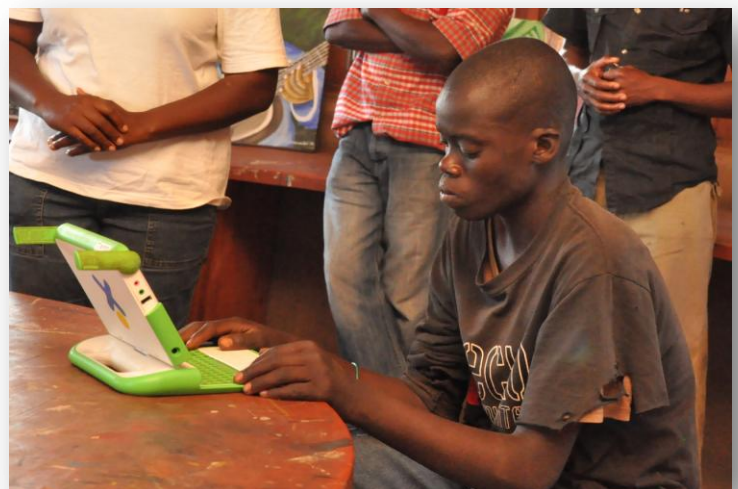
VISITS IN 2010

Lubuto library had over 50,000 visits.

This included children who came from the community, the street and children in residence at Fountain of Hope.

ONE LAP-TOP PER CHILD PROJECT

Lubuto Library project also runs the **One Laptop per Child Project (OLCP)**. In this project, children are able to learn the functions of the computer and how to use several programmes. They are able to play mathematical games which make it easy for the children to understand mathematics.



THE ART PROGRAMME

The art programme run by Lubuto Library has been very successful with children making several paintings that are later sold to raise money to pay school fees, buy educational materials clothes and other necessities for children.

When children are rescued from the streets they access all the services. The art programme gives the children an opportunity explore their artistic potential. It helps the children to heal in mind and spirit.

Children are involved in visual art under the guidance experienced artists.



THE ART WORKS

The art works depicts life style on the streets, in the community and mere illustrations.







OUTREACH PROGRAMME



Targeted at rescuing;

- Children living on the streets
- Children from vulnerable household
- Abused children
- Lost children
- Children abusing drugs

OUTREACH PROGRAMME



OUTRACH PROGRAMME

Outreach programme is the back bone of Fountain of Hope. The programme rescues children from the streets and brings them to the centre [Kamwala Drop In Centre]. At Fountain of Hope, the children undergo screening at the clinic and are counseled. Life on the street is very hard. Food is also scarce. There are children that have no home and families to live with. Their parents have died of HIV/AIDS and they sleep outside. They also have no beddings and find it difficult to access medical services.

They spend nights burning carton boxes from shops in markets used as packaging boxes and packages of local opaque brew called "Shake-Shake" to make fire for warmth at night. They spend the night next to the fire while others sleep in abandoned car wreckages. Life is not easy and they have to brave the night under the influence of heavy intoxication of drug called 'Bostic'. Others sniff another type of glue called 'genkem' which makes them feel drowsy just afford to get some sleep before they are disturbed by busy passerby the next morning.

Fountain of Hope runs an outreach programme with support from Mission Direct to rescue these children from the dangerous environment.

These children do not choose to find themselves in this environment. They are innocent children that have lost both parents due to HIV / AIDS. Fountain of Hope has been running programmes to rescue children and support children drawn from the street for the past 15 years.

"....family life and street life are very different. Home is the best place for a child"



Above: Fountain of Hope outreach team coming back with a group of rescued boys.

Below: Children warming themselves early in the morning



STREET VISIT

The process of identifying street kids begins with a visit into town or market where these children live. Creating rapport and making friendship is the first step to building a long relationship with the children that will later on be relied on to convince them to come to Fountain of Hope.

When outreach team finds a child on the street, they have to make a very detailed investigation about the child's background to try to find the family members, relatives, or people with information on the child. In Zambia, extended family relationship is very strong and it is possible for the relatives (uncles, aunties, brothers) of a child to raise them following the death of parents. We first have to trace the relatives of these children.

Children drift to the streets of Lusaka (Capital of Zambia) from other towns by train, buses in search of a better environment where they can access basic things like food, shelter, school when these are unavailable in their homes or environment. But the streets do not offer such things. It is a dangerous place for children. There are a lot of temptations and peer pressure and some end up abusing drugs while other boys and girls engage in unprotected sex and have ended up acquiring Sexually transmitted diseases including HIV at a very tender age.

Fountain of hope with the support of Mission Direct runs the outreach programme rescuing children from the streets way. We work as a team with Mission Direct to provide basic services.

When we rescue children, we have to prepare them for reintegration with their families. We carry out the following steps



1. Home Tracing
2. Home Visits
3. Home Assessment
4. Reintegration
5. Follow Ups

HOME TRACING

Children who have long left home fail to trace their families sometimes because their relatives have relocated. Others kids simply cannot tell you why they do not want to let relatives know that they are on the streets for fear of being victimized. There are situations where a child runs to the street as a result of being abused physically & psychologically. Not excluding child labour. It is the difficult task for Fountain of hope outreach staff to trace the home of each child on the streets.

Where a child's home cannot be traced, then the child lives in an orphanage or is supported by Fountain of Hope. Fountain of Hope provides basic services at the centre such as education, health, food, sports & recreation e.t.c. Some of these children have lived on the streets for a very long time and they need a long time to recuperate. We offer sports and recreation to help the children in their physical & mental healing process.

HOME VISIT

Before these children are reintegrated, they go through a number of programmes and these include, psychosocial counseling, opening up opportunities, drug and alcohol abuse programme, reproductive health, mentoring and sports & recreation.



"...Children live at Fountain of Hope for 3 to 6 months before they are reintegrated with families or relatives in communities. While at Fountain of Hope they have access to food, education, clinic & health, sports & recreation, library, counseling, clothing e.t.c. After going through rehabilitation and eventually being reintegrated, the relationship between the Child and caregiver is life long. One that is of mutual trust, love and appreciation from both sides"



Tracing the home of a child takes place when either the child is on the street or the street of has been rescued and brought to Fountain of Hope. We live with children drawn from the streets for three to six months. The period within which we are able to trace a Childs relatives or find a solution to their needs. When a home of a child is traced we visit that home with or without the child depending on the situation. This visit is important because we have to see if the home will be conducive for the child to live. Home visit

HOME ASSESSMENT

We have to assess whether the child is worthy staying at home and weather the home is conducive and has adequate food (i.e. is guardian able to provide 3 meals a day; is there running water in the home; number of dependants in household; net household income. In most cases, we find that the homes are headed by widows and (grand-parents) upon assessing the capacity of the family to look after a child. Children run from home due to lack of capacity in guardians [widows whose husband have died of HIV and grand parents whose children have died and left behind children to raise] failure to provide for their dependants. When we see the need for women to be empowered, we refer them to our **Women Empowerment Programme**. This is a separate programme that we run at Fountain of Hope to empower poor women whose children have drifted to the streets due to poverty. Under the WEP women are empowered with skills to be self reliant and resourceful so as to provide for their homes.

REINTERGRATION

WEANING CHILDREN OFF DRUGS

Most children living in the street are addicted to drugs. When they come to Fountain of Hope, we do not allow them to engage in any form of drug abuse. We introduce them to our programme like sport and recreation which help them in stabilizing in mind and soul. We also work with churches like the Baptist church that comes to preach the word of God and takes them to church on Sundays.

We also have to ensure that they attend Fountain of Hope community School and they are counseled before they start entering class to prepare them for the change in environment.

ABOVE: notice the bottles of BOSTIC held by two boys above, one of the most common feature among street kids in the streets of Lusaka"

".. outreach section is one of the most challenging and emotionally draining as staff work 24 hours attending to matters at the centre and on the street."



No child is an Island. Fountain of Hope believes that the best place for a child is home. Every child has roots that at one point should be claimed for him/her to grow in a full wholeness.

Following our intensive long programme, when the child has fully changed and is ready to be reintegrated, he is counseled by qualified counselors in preparation for the new environment. The family that will be taking care of the child, either biological family or relatives are also counseled. For instance, in the home, they have to refrain from calling the child a “street kid” [A term that is not used at Fountain of Hope as it is demeaning and degrading]. And respect the rights of a child e.g. no child should be engaged in child labour, every child has the right to education.

Following rehabilitation at fountain of hope, children are reintegrated back to families in communities. However sometimes, the children are not integrated but are sent to other centers where they can access facilities being offered which Fountain of Hope does not offer yet. These facilities include secondary education, skills training, catering for those with physical and mental challenges.

FOLLOW UPS

When children are reintegrated, we have to make follow ups to check on how the children we have rehabilitated are coping from time to time.

After passing through fountain of Hope we expect children to have a new perspective and cope with the new environment to be able to lead a normal life free from strife after passing through our programmes.

Follow ups are made on every child every month for the first three months and every two months for the next six months. And thereafter once a year.

FREQUENT ASKED QUESTION ABOUT OUTREACH PROGRAMME

Q. 1 what age groups does fountain of hope work with?

Ans: We work with children aged between 9 and 18.

Q. 2 what happens when you receive a child aged below 9 or above 18

Ans: Children aged below 9 are referred to other centers helping children in that age group? Fountain of Hope is also a screening centre for all other charitable (orphanages) because of its proximity to town.

Q.3 Do you provide Education?

Ans: Yes we provide primary education from grade 1 to 7 (1st Grade to 7th Grade)

Q 4. What happens when a Child you have reintegrated goes back to the street?

Ans: We take them back into our facility and we start the process again. We do not give up on a child.

Q 5. Do children die on the street? What do you do when that happens?

Ans: Yes children die on the streets and others die after being taken to hospital from ailments like malaria, we make arrangements with local authorities and communicate with the relatives of the child about the death. Then we help to arrange funerals and other logistics.

Q 6. How many children died on the streets last year?

ANS: Six children died on the streets last years from various causes?

Q 7. What happens when a child is ill on the street?

Q 8. **Ans:** Fountain of Hope runs a clinic where children from the street can access medication free of charge. We refer serious cases to Government Hospital nearby.

DEATHS ON THE STREETS

In 2010 year, Fountain of Hope experienced an unprecedented number of deaths. 6 children died on the streets. Fountain of Hope manage to ensure that relatives of the deceased children were notified and burial arrangements were made. Three died as a result of being hit by vehicles in busy streets and three died of natural deaths following illness.

As at 31st December, only one body of was yet to be buried as relatives had not been traced.



STAFF IN OUTREACH SECTION



“Where Hope Flows in Us”



Working with



SPORTS & RECREATION PROGRAMME

Targeted at:

- Children from the street
- Children from the community
- Children resident at fountain of Hope

SPORTS & RECREATION PROGRAMME



Fountain of Hope sports and recreation programme continued to run with the support of Sport in Action. Sport in Action continued to provide training to young sport instructors and supplying of sports equipment to Fountain of Hope for use by boy and girls participating in several sports disciplines.

The sports that children participated in 2010 included the following;

- Football
- Rugby
- Basketball
- Volleyball
- Netball
- Chess



Fountain of Hope Football team performed well during the year. The football teams were as follows under 17, Under 15 and under 12 teams.

The girls' netball and volleyball teams also performed well in 2010 including the boys and girls basket ball teams. The girls' netball team emerged 2nd in the Zambia Netball Association League. This success was due to the quality of training the girls received during the year from Sport in Action volunteers that came from Durham University and other institutions through sport in Action.



Sport has continued to play a very important role in the rehabilitation of children especially drug addicted street children who come to Fountain of Hope. It also instills a sense of discipline in the children.

Sports and recreation programme works very closely with outreach staff. Football is used to get children from the streets.

Football matches are frequently arranged by outreach staff with children living on the street as they create rapport and before they are brought to fountain of Hope. Once the children are brought to the centre, they are encouraged to participate in sport . This is in order to regain their physical fitness and also boost their confidence and intelligence. Sport has also helps to rehabilitate children addicted to drugs such as “Glue” “Petro”, “ Bostic” “Marijuana” and other drugs.



The rehabilitation of a street child brought to Fountain of Hope takes 3 to 6 months. The children also go through various counseling sessions to help them cope with the new environment. They also learn how to make friendship with children from the community.

Children run into the street as a result of not having recreational time.

The sports and recreation programme is run as a preventive programme that helps to prevent children from the surrounding communities from going into the streets. Fountain of Hope is very close to town and its locality makes it the most idea place to provide sports and recreation to reduce drifting of children to the streets.



In 2010, 5,780 children participated in the sports and recreation programme at Fountain of Hope.

There was also a tremendous reduction in new cases of children going into the streets.

The sports and recreation programme caters for children resident at Fountain of Hope and children from the community. It has also helped to strengthen the bond between Fountain of Hope Staff and children with the households in the community where fountain of Hope operates.

Fountain of Hope has continued to attract a growing number of younger children from the surrounding communities who would otherwise be on the streets.

With a team of committed staff and volunteers the children are drawn from surrounding households and children at risk of drifting to the streets are



FOUNTAIN OF HOPE FOOTBALL TEAM

In 2010, Fountain of Hope management started making arrangements to revamp Fountain of Hope Football team that was disbanded several years ago. The previous Football team had gone up to the division II in the Football Association of Zambia (FAZ) league.

Preparations were made to have the player and team registered in the Lusaka Amateur Football Association League.

Fountain of Hope football team resurfaced in 2010 under new coach Steve “Cisse” Siame who have been trained by Sport In Action. Steve has been able to manage three teams that comprise under 12, under 15 and under 17 teams.

The under 17 team (right) has been preparing to represent Fountain of Hope in the Lusaka Amateur





MUSIC

Fountain OF Hope encourages children to be involved in music. It contributes to the rehabilitation and healing of the Childs emotions and improves psychological well being. In 2010 we supported enterprising youths in their efforts to realize their potential through music, we summoned up 2010 with a Fountain of Hope party hosting Fountain of Hope emerging musician from the street that included Emmanuel (a.k.a. Black 2), Jackson,



Emmanuel Chisundu
(a.ka. BLACK 2)
ARTIST & MUSICIAN

“.... I found myself on the streets in 2003 because my aunt was abusing me. She was giving me a lot of work at home. She also did not want me to be going to school. On the street, I ended up taking a drug called “bostic” and I used to ask for money from passersby.

I was rescued from the streets by Fountain of Hope. I have been able to continued school and I would like to be a musician and visual artist. Slowly, I am realizing my dream.”





WOMEN [MOTHERS] EMPOWERMENT PROGRAMME



Targeted at:

- Widows
- Aged women
- Single Young mothers
- Mothers & Children Drawn From the street

MOTHERS PROGRAMME



The women empowerment programme was a project between Fountain of Hope and Project Concern International (PCI). The aim of this project was to empower women to be self-reliant through creation of small income-generating activities from which they could provide for their families.

The women empowerment programme with PCI ran from 23rd January, 2008 to 13th August, 2010. The financial obligated amount of this project was **K65,809,000**. During this period, there was a cost share of **K16,452,250** from Fountain of Hope.

The project brought together 500 women, most of them, mothers of children who have drifted to the streets due to poverty in homes.

The women formed Self Help Groups (SHGs). They were required to contribute a small amount of money to the groups revolving fund. This money would later be used to empower new members to the group to start new businesses.

GEOGRAPHICAL LOCATION

The projects were being undertaken in areas identified close to the beneficiaries. These areas included

- KUKU Compound
- John Leing Compound
- Kamwala South Compound
- Frank compound
- Chawama Compound

ACTIVITIES

The activities undertaken by Fountain of Hope to help the women were as follows:

TYPES OF BUSINESSES SET UP BY WOMEN

The types of enterprises set up by the women included trading in second-hand clothes, bricks, knitting, processing groundnuts to peanut butter, selling chitenge material, selling food stuff etc.



".. I enjoyed working with the women and helping them establish small businesses. Women should not be underrated where business is concerned. The majority of women we empower are widows while others have been abandoned by husbands. There is also a growing number of grandmothers looking after orphaned grand children due to HIV / AIDS. They need the most support considering their energy level to engage in income-generating projects. Helping the poor in society is like lending to God."

Bridget Namwilla

Group Facilitator

WOMEN EMPOWERMENT PROGRAMME

[Bridget left Fountain of Hope in May 2010 to join the Ministry of Health after working for Fountain of Hope for 10 years]

Program Overview

The key objectives for the programme are outlined below.

PROGRAMME OBJECTIVES	TYPE OF ACTIVTY	GEOGRAPHICAL LOCATION	PLANNED TARGET	ACTUAL TARGET	ACTUAL TARGET DISAGGREGATED BY SEX	
					MALE	FEMALE
1. Reduce the number of at risk children moving from their families and communities to the streets.	Entrepreneurship Training	Refer to list of beneficiaries	600	550		
2. Increase the number of children moving from the streets back to communities through family and community reintegration	Journey of life	Refer to list of beneficiaries	600	550		550
3. Increase the capacity of the government of the Zambia. Local implementing partners, civil society organizations and the private sector to effectively implement interventions that will benefit street children and those at risk of ending up on the streets.	Micro Credit Facilities	Mapepe Area (Twapaplwa Women's Group 'A' & B')	60	60		60
4. Increase public awareness & participation in protecting and promoting the rights of Children on the streets	Children & responsibilities rights	Refer to list of beneficiaries	600	600		600
5. Increase the number of children benefiting from high quality street and facility based services		Refer to list of beneficiaries	600	600		600



"... it was challenging when we just started working with women in my catchment area and it was hard to convince them on the importance of savings. But we managed to win them over and later they appreciated and also learnt the importance of being a member of a self Help Group. The women acquired several skills and knowledge and became aware of their potential. With the experience I gained I can work anywhere. In our catchment areas sensitization in HIV/AIDS, Child's Rights, Children abuse and other related issues is so much needed".

Catherine Nalumpa

Group Facilitator - WOMEN EMPOWERMENT PROGRAMME

Programme Achievements for the sub-award period

Objectives	Activities
To enable eligible women form (Self Help Groups) groups	<ul style="list-style-type: none"> ○ Group formations
To equip women with skills in entrepreneurship	<ul style="list-style-type: none"> ○ Entrepreneurship trainings
To enable women raise group fund to use as seed capital.	Fundraising ventures through different fundraising initiatives: <ul style="list-style-type: none"> ○ Golf Tournament at Chilanga Golf Club (Mepape Women's Group) ○ Selling of T-Shirts and Chitenge materials ○ Buying and reselling dry fish from Siavonga ○ Processing of ground nuts into peanut butter
To offer psychosocial support to group members	<ul style="list-style-type: none"> ○ Training women groups in Journey of life



Women Empowerment Workshop held at Fountain of Hope in December 2009

Above: Part of the women that come to attend a women empowerment workshop at Fountain of Hope. At the Centre are Kabwata Member of Parliament Mr Given Lubinda (Who opened the workshop) and Ward Chairperson Mrs. Banda

During the duration of the empowerment programme the following groups were formed

	NAME OF WOMENS GROUP	LOCATION	WHEN FORMED
1.	Chinyenyembekezo Womens's Group	Kuku	April 2009
2.	Amai Mutisunge Womens's Group	Misisi	April 2009
3.	Twashuka Womens's Group	Misisi	April 2009
4.	Tiyajane Womens's Group	Misisi	April 2009
5.	Chigwirizano Womens's Group	Kabwata Site & Service	April 2009
6.	Lusekelo Womens's Group	Kamwala	May 2009
7.	Blessings Womens's Group	Kamwala	May 2009
8.	Twatashya Womens's Group	Misisi	May 2009
9.	St. Lawrence Womens's Group	Kamwala	June 2009
10.	Madalitso Womens's Group	Misisi	May 2009
11.	Tigwirizane Womens's Group	Misisi	September 2009
12.	Tiyeseke Womens's Group	Misisi 'B'	September 2009
13.	Chimwemwe Womens's Group	Misisi	September 2009
14.	Kusekelela Womens's Group	Misisi	September 2009
15.	Mapalo Womens's Group	Kuku	October 2009
16.	Twikatane Womens's Group	Kamwala South	October 2009
17.	Chifundo Womens's Group	Kamwala South	October 2009
18.	Joy Womens's Group	Kamwala South	October 2009
19.	Temwa Womens's Group	Kamwala South	October 2009
20.	Twapalwa 'A' Womens's Group	Mapepe	October 2009
21.	Twapalwa 'B' Womens's Group	Mapepe	October 2009
22.	Hope Womens's Group	Kamwala	November 2009
23.	Chitukuko Womens's Group	Frank / Misisi	October 2009

WAY FORWARD FOR THE GROUPS

Fountain of hope with the help of PCI managed to form the above groups through which to empower the women. The groups are managed by Fountain of hope Women empower programme officers.

Some women managed to raise seed capital from the revolving funds from groups. However, their businesses are not registered with the relevant authorities. To access funds from registered financial institutions like CETZAM, FINCA and some government Grants. The women groups have to be registered with the registrar of societies of Patents and Companies Registration Authority (PACRA)



SUCCESSSES

The funds allocated for the programme were exhausted in June 2010

- Over 250 women were empowered from the revolving funds that were established while others benefited from linkages established with micro credit companies.
- Other women businesses expanded after they acquired book keeping knowledge and business skills
- Most women are now able to provide for their families and their children have not gone back to the streets.
- One group in Mapape area has already managed to register their group with the Patents and Companies registration office and they have a bank account. They have even accessed a lone for distribution to members of the group.
- All members of the groups were trained and equipped with entrepreneurship skills . they are waiting to be empowered with capital.

CHALLENGES

- There are other NGO's providing small loans to the vulnerable women in the communities, hence the competition
- During rainy season it is difficult to monitor programmes due to floods and outbreak of diseases in all our catchment areas.
- A lot of members relocated to other areas during the rainy season due to floods and outbreak of cholera.
- Women shunning meetings
- Transport / communication to reach some areas due to floods.
- Women who are not into any form of income generating activity found it difficult to contribute due to the fact that they had no source of income.



LESSONS LEARNED AND PROMISING / BEST PRACTICES

Twapalwa Womens group has been one of the most successful groups. They urged their members to contribute funds to the group to help new members start income generating activities. The group has been registered, have an office, a bank account and has applied for loan from a Micro Financial Institution, the **Micro Bankers Trust**.

Groups should have leaders that are committed.

Groups should work closely with community leaders within the areas they are from such as ward counselors. This will be helpful in terms of mobilization of members and dissemination of information.

- During rainy season we have learnt that it is difficult to monitor these groups due to floods and outbreak of diseases in all our catchment areas.
- Women have appreciated the concept of working in groups.
- Women find it difficult to use saving documents.

PROGRAM MANAGEMENT

The programme was run by Fountain of Hope Executive Director and two group facilitators. FOH was able to access financial and material resources from PCI to use in the implementation of the programmes during the period of the agreement.

SUCCESS STORIES

TWAPALWA WOMEN'S GROUP

Mapepe women's group [Called ***Twapalwa Self Help Group***] has been one of the most successful. The group has managed the following:

- Mobilization of members
- Registration of the group (Twapalwa Womens Group)
- Opening of bank account
- Preparation of Books of Accounts
- Members diversifying in various businesses
- The group has also applied for a loan from Micro Bankers Trust to help members get small agricultural loan

[Twapalwa means 'we are blessed']

Below: Members of the Twapalwa women Group who came to participate at an entrepreneurship workshop in Mapepe area

TWAPALWA WOMEN'S GROUP

of Mapepe Area in
Chilanga



Above: *Twapalwa Women* group members singing at the meeting on 5th July 2010

Right: A Micro Bankers Trust loans officer explaining to **Twapalwa Women's** group members how they could access loans from her organization at a workshop held on 5th July, 2010 in Mapepe area in Chilanga



Right: A participant getting a certificate of attendance from Mrs Banda Kamwala ward chairperson on 5th July, 2010



CONTACT US

ADDRESS:

**Plot No: 32320,
Kamwala
Lusaka
Zambia**

MAILING ADDRESS:

**P.O. Box 32320,
Lusaka
Zambia**

CONTACT PERSON: Roy Chisha

**POSITION: Manager – Finance &
Administration**

Phone: +260-976-301-086

E-mail: fohzambia@live.com

**Website: www.fountainofhopezambia.org
(Website under construction)**

