



BAMPOREZE ASSOCIATION

PO Box : 2597 KIGALI

Tel : (+250) 0788304120

Email : bamporeze@yahoo.co.uk

Social and Economic empowerment of women headed households and other vulnerable families in Ngororero District, Western Province, Rwanda.

Proposal submitted to Global giving

PROJECT IMPLEMENTATION PERIOD: January 2011 - December 2012

Contact Person:

*Mrs. Jean d'Arc MUHONGAYIRE,
The Director*

e-mail : bamporeze@yahoo.co.uk

*Mr. Jean Damascene MUNYAGASHUBI
Director of Programs*

E- mail: mujedam@gmail.com

November, 2010.

1. Summary

1.1. Target group

Woman and Child headed households including those infected and affected by HIV/AIDS, Western province, NGORORERO District, RWANDA.

1.2. Initiative description and innovations

Purpose:

To reduce persistent household food insufficiency and inadequate disposable incomes.

Activities:

- Farming using high yielding breeds of pigs
- Organic farming
- Self help group for savings

Outputs:

- Rotational credit scheme of pigs
- Increased household food security for 200 families
- From the sale of piglets and organic products, the project will raise cash incomes from less than USD 100 to more than USD 1000 per household per year
- Multiplier effect on neighbouring women groups on rotational scheme
- From own small savings, beneficiaries will be linked to local financial institutions

1.3. Poverty reduction

- Introduction and use of high yielding planting material will make available organic vegetable products all the year round. This will ensure proper nutrition of the family members and reduced malnutrition especially among children and people infected with HIV/AIDS.
- Sales of piglets and other organic products will increase disposable incomes and help to accumulate economic assets. This will improve access to medical and educational facilities for the members.

1.4. Environmental protection impacts

The project will introduce measures to control erosion and increase soil fertility. In the long run, this will contribute to effective environment conservation

1.5. Partnerships

Thanks to the financial assistance, beneficiaries will be linked with other local technical and financial service providers for technical assistance in animal care, organic farming and for loans. The group will be assisted to develop an efficient management structure that will enable it to spread the credit scheme to other women groups within the area.

1.6. Sustainability

The economic gains as well as the efficient, democratic and transparent management system will be largely the factors behind its sustainability.

1.7. Duration and Budget

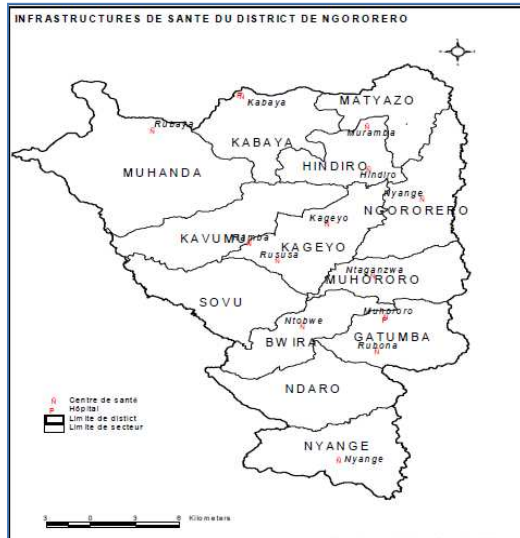
The project duration is 18 months.

The total budget requested for funding is **USD 98,800**

2. Problem statement

NGORORERO District is one of 7 Districts of Western Province, located in the eastern part of the province. The District Development Plan 2008-2012 indicates that the Human Poverty indicator was at 69% of the population earning less than 1US\$ per day for 2008 above the country average of 56.9%. According to the same source, 40% are in extreme poverty. This implies that nearly half people are considered to be living in extreme poverty. In most of families, high poverty levels create the burden of meeting basic social services as well as meeting household needs. This area was gravely affected by the genocide and HIV/AIDS is also having its toll on the communities, and this continues to increase the numbers of helpless orphans, widows and others in very difficult conditions.

Since March 2008, Bamporeze has been working in 4 Districts (Nyabihu, Ngororero, Rubavu and Rutsiro) in Western Province to support 76 Associations of People Living with HIV/AIDS to increase the number of people receiving HIV prevention and care using a community-based approach in order to improve overall health facility services uptake by the community and HIV infected patients. Working in the area with the general community, we have found out that at the household level, families live miserably and deaths occur that would otherwise be avoided because no direct assistance is provided to help them access day to day needs, including food and other basic requirements. Child and woman headed households are rated among the poorest and vulnerable groups and are often socially isolated and lack all faith in their own development abilities.



This project will be implemented in 3 Sectors of Ngororero District namely Gatumba, HINDIRO and Muhororo, The choice of Ngororero District is motivated by the extreme level of poverty characterising local population and the higher number of Child and woman headed Households due to the genocide of Tutsi and HIV/AIDS. It is important to mention that unlike others regions the genocide started early in 1990 in Ngororero District (in the past called Kibilira Commune) and continue until 1994. Many men had been killed during the genocide others had been incarcerated because of genocide crime. This district has also a significant place in the history of the VIH/SIDA in Rwanda more especially as the first case of the VIH/SIDA to being diagnosed with the CHK in 1983 was originating in this district. The above mentioned reasons explain well why Ngororero district has the biggest number of orphans and widowers as well as child and women heading households.

The selection of this district has been guided by this criterion, where 3851 Women and Child-headed Households accommodating more than 15,000 OVCs are present in the selected sectors and already working with Bamporeze within the program described above.

Specifically in these rural areas, agricultural activities on what more than 95% of people live are small scale and subsistence. The topography of the area is generally hilly and development is also hindered due to difficulties of accessibility. The environment has gradually deteriorated due to human activity. The soils are exhausted due to over cultivation with poor farming methods, and this has adversely affected agricultural output, subjecting the communities to persistent malnutrition, famine and escalated levels of poverty. To be productive, soils need to be replenished using organic manure. Unfortunately, sources of organic manure are very limited in the area since very few families own animals because many cows had been also massively killed during the 1990-1994 genocide and others have been plundered by insurgent Interahamwe during the period from 1996-1999. Even the “one family one cow” program is being implemented in all 30 districts as well as in Ngororero district, pigs and goats are among the types of livestock practised in the area and particularly preferred by poor households. The main benefits are the organic manure and the sale of piglets that remains almost the only source of cash income. There is great potential with pigs and goats rearing but to get more benefits, there is a need to introduce high yielding fast growing breed: Large White and Alpine to improve living conditions as regards to shelter and feeding techniques. Alpine goats are good milk goats that could improve nutrition and serve as source of income as the cost of goat milk doubled those of Cow milk because of its high quality.

Similarly, the non- agricultural activities are almost inexistent. The major cause is the low capital base amongst the majority of the farmers which fails then to shift from subsistence to market oriented farming which have value addition and generate more income.

In addition to the general challenges affecting the community, the OVC living in the Child and women headed poor households feel neglected and isolated. Observably, they are timid and lack the strength and courage to struggle for the limited resources and feel they are marginalized. They express a feeling of resignation and loss of hope. Most of them have not gone to school at all, while those who have attempted many have fallen out before completion of primary level. Survival is very difficult for these children. They are visibly still traumatized from the losses of their

parents and they have no assured source to cling on to support their immediate household needs like food, health care, healthy shelter, etc. They urgently need enhancement both psychologically and materially.

This project proposes to provide OVC especially the Siblings of Child and Woman headed poor households with psychosocial support through the mentoring program and to equip them with skills and some basic starters' kits to enable them start their own small projects based on organic farming principles to enable them to produce enough food for their households and to sell the surplus to earn some income to support their other needs on a sustainable basis. This project will also address the child right to good nutrition, education, right to health care as well as children and woman inheritance right issues using a Child and women centered approach.

Design and implementation

Objective

The overall objective is to support the social economic integration of the OVC, leaving in the vulnerable poor families headed by Children and women in Ngororero District by empowering them through the community based mentoring, organic farming skills development to enable them to enhance their lives to become self-sustaining and integral members of their communities and through Support Group strategy.

Target Groups:

Orphans and Vulnerable Children living in child and woman headed poor households:

The direct beneficiaries are OVC living in child or woman headed poor households; or vulnerable children and youth from households affected by HIV/AIDS. Out of the 3851 poor households in the targeted sectors, 100 child and 100 woman headed households will be selected to benefit from the project. The 200 households that will directly benefit from the project are estimated to hold an average of 4 children per households, thus, a total of 800 OVC will benefit from the project. Following criteria should apply in selection of OVC/youth:

- 1°. Should be from a Child Headed Household;
- 2°. Should have other siblings under their care;
- 3°. Should be at least 14 years of age or above;
- 4°. Should have a plot of land for cultivation;
- 5°. Should be residing in one of the sectors covered by the project;
- 6°. Should have keen interest to learn and apply the skills;
- 7°. Even distribution of the project within the sectors for balanced distribution of the available support and development.

Mentors:

Each of the 100 CHHs will be given an opportunity to identify a mentor of his/her choice. A total of 100 mentors will therefore be involved in the project, to be responsible for 100 CHH, holding a total of about 400 OVC. The mentors will benefit through participation in the capacity building activities. The mentors will be trained and equipped with the skills necessary for appropriate psychosocial support and guidance to the OVC. The mentors will also be trained in the organic farming techniques to enable them guide and support the OVC as they establish their projects. The learned skills will also help the mentors themselves to improve their own livelihoods through increasing productivity on their own farm plots. Following criteria should apply in selection of mentors:

- 1°. Should be preferred by the particular child;
- 2°. Should be a reputable member of the community;
- 3°. Should be a parent;
- 4°. Should be familiar with the particular CHH;
- 5°. Should be a close neighbor or relative to the children;
- 6°. Should have a farm plot to apply the organic farming techniques;
- 7°. Should have keen interest to learn and apply the skills on his/her own;
- 8°. Should be ready to volunteer and sacrifice for the children.

General Community:

The general community of Ngororero district will also benefit from the new techniques that the project will help to introduce in the area especially organic farming and other improved farming methods. Selection of the beneficiaries will be carried out by a combined team including the project staff, reputable parents from the area, opinion leaders, and representatives of the local leadership.

Proposed interventions and strategies

Community based mentoring

Mentorship program

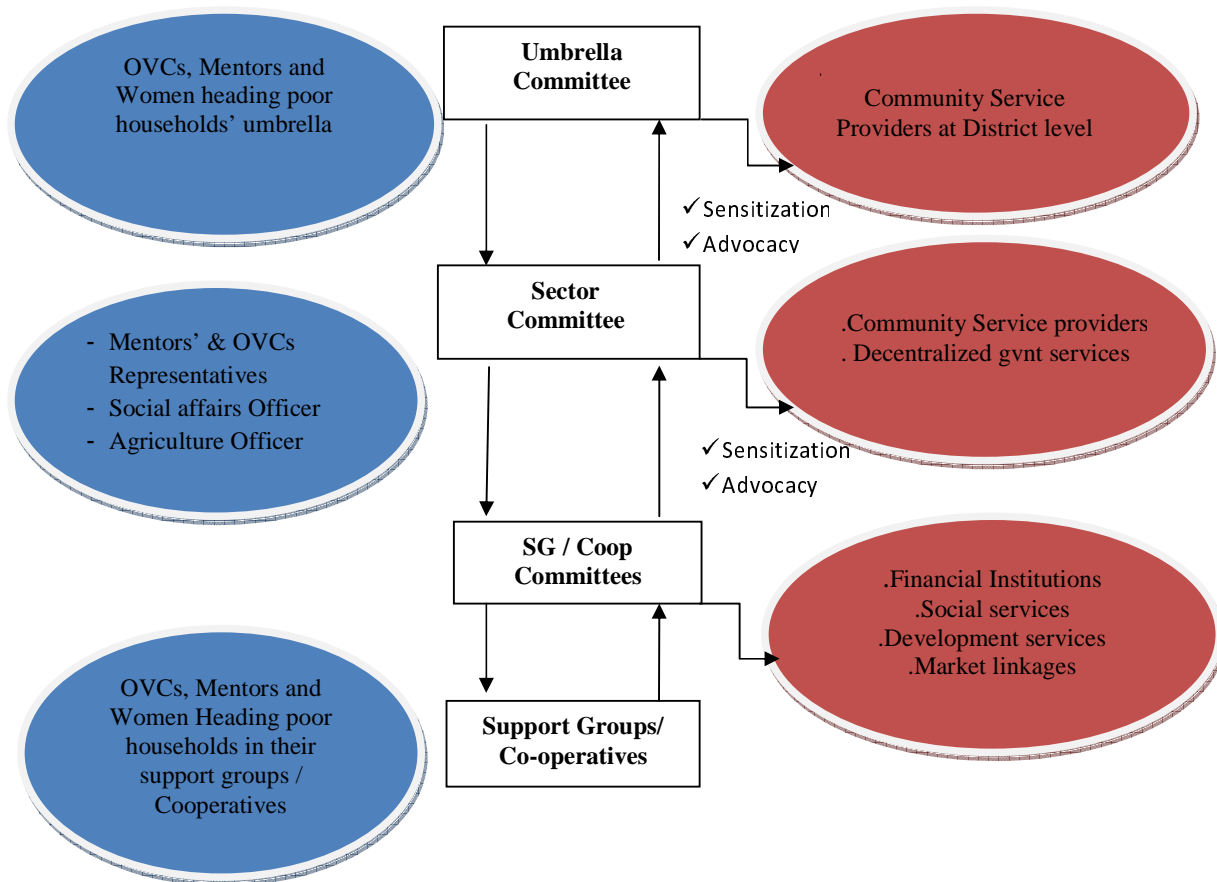
The community based mentoring or child mentorship program is designed to support and protect the OVC that have chosen them as their “parents”. Mentors get involved in the lives of children, helping to solve their day-to-day problems. They regularly visit CHH assessing their current state of emotional well-being and their needs in terms of health care, food, clothes, etc. and share good and bad news with children. Mentors act as advocates, teachers, counsellors, and bridges to the community and service providers.

Formation of OVC and mentors support groups

The support group approach is among the main strategies for improving the situation of OVC when focussing on their economic and social empowerment. The approach is based on the belief that cause of poverty is not just material deprivation but a continuous process of “disempowerment” that includes denial of choices/rights/opportunities, discrimination, disparity, domination, displacement and desperation. The SG-approach will enable them to meet their basic needs and reinforce their own development capacities through forming supportive peer groups and through appropriate training. In the weekly meeting in homogeneous groups, they will realize that they are no longer alone. They start sharing their problems and social issues are discussed. The weekly savings will provide the basis for small activities to gradually improve their income opportunities.

A maximum of twenty five OVCs representing CHHs, their mentors and women heading poor households support groups will be formed in each sector according to facility of meeting and will elect their committees. Sector committees will also be put in place in each Sector to be representatives of children, mentors and women heading poor households support groups. Two representatives will be elected from each group and will be joined in sector committees with one sector authority in charge of social welfare and one in charge of development services. The representatives will be selected by their fellow group members’ according to their assessment of their capacities. They will serve as representatives for a term of 1 year. Likewise, district umbrella committees will be formed by joining together 3 representatives of OVC, mentors and women heading poor households from each sector.

The role of the sector and district umbrella committees is to permanently sensitize communities, lobbying and advocating for the cause of children headed household and other vulnerable children. The sector committees will meet regularly in consultative meetings organized quarterly. In these meetings, they will enquire about and share the best practices from support groups and the community in order to replicate them where possible. Another key role expected from these committees is the involvement in the process of registration of their support groups as officially recognised cooperatives operating at Sector level. Since cooperatives are open to other members from the community who are willing to join, it is expected that the membership of these cooperatives will grow over time. As such, the capacity of the community to take care and support OVCs will be increased and sustained. Below is the organisational structure that will be put in place.



Training Support Groups committees, Sector committees and district umbrella committee in Child Right Approach

Representatives from support groups committees, sector committees and district umbrella committee members will benefit a 5days training of trainers in Child Rights Approach as well as women inheritance rights and gender based violence. As output trainees should come up with a one year action plan to sensitize the community on Child Rights trough monthly support groups meeting and after community work common known as “umuganda” organized on weekly basis in each sector of Ngororero district. It is expected that the sensitization campaign will reach at least 8300community members including 800 OVC, 100 mentors and 100 women heading poor households and other 5000 community members including opinion learders.

Strengthening WHHs, CHHs and mentors' support groups

To strengthen further the support groups toward sustainability, WHHs, CHHs and their mentors will be trained on general issues regarding business management. They will be encouraged to meet at least twice a month not only to save and give loans but also to discuss and act on issues affecting OVCs and children, record keeping, rotational leadership in each meeting, developing new income generation opportunities, linking to other service providers, mobilising larger communities to support OVCs, etc.

Support Group Committees will be empowered to play a leading role of coordinating all activities and make successful linkages with other institutions including local financial institutions. Therefore, committee members will receive ten-day training sessions on the roles and responsibilities, on business management, book keeping, keeping records and facilitation of microfinance linkages. They will be taught about the requirements when applying for a loan from the group revolving fund, including the business plan to their fellow members, and how they assess and monitor the process. Since they already have some experience, this will be strengthened and once enough experience is gained in handling and using loans, the members can apply to microfinance institutions.

Sector and umbrella committees will have also their capacity strengthened towards their role of permanently sensitize communities, lobbying and advocating for OVCs' cause. They will receive a 5-day training course to empower them with necessary capacity to assume these roles.

1.1.1. Organic farming

The project will organize training on organic farming through workshops to be conducted on specific technical issues. The regular training will be conducted by resource persons, since these will require very specialized skills to ensure quick learning on selected themes.

Provide 200 Child and Women Headed Households with Tarters' kit for organic farming

In addition to the specialized training to enhance knowledge to run their projects, they will be provided with a starters' kit to enable them to establish organic farming projects to enhance their lives. Beneficiaries will be provided with planting material including vegetable seeds and livestock. The pigs will be given to each Child/ Woman Headed Household. Before the end of the first year, each CHH shall have given back a piglet so as to reach 200 mentors' children on a rotational credit system. Pigs will provide beneficiaries with organic manure to maintain soil fertility to produce enough organic products for home consumption and for sale.

1.1.2. Sustained income generation

Towards the end of the first year, in addition to income from sale of piglets, support groups/cooperatives will mobilize their members to avail land and engage for market oriented organic farming activities using land consolidation strategy. The success of the action will be dependent of the area available for cultivation. Potential cash crops to be grown include Maize and vegetables. Considering 500 households, with every member setting aside a plot of a minimum area of 0.1 hectare each season for this activity, the land area available would be 50 hectares. As other members from the community would be willing to join, this will make it possible to increase the land area, and thus, to increase the production and the promotion of organic farming in the area. Since many farmers in the area are aware of potential benefits from Maize and vegetable cropping, it is worth expecting more and more farmers registering to join the organised groups for vegetable and maize crop intensification using organic farming techniques.

2. Project description

2.1. Project Outcome:

300 Child and Woman headed households and other vulnerable families from the community are empowered socially and economically.

2.1.1. Output 1: Improved social support system for children within their own communities.

Activity 1. Identification of WHHs, CHHs, selection of mentors and organizing them in Support Groups: This activity consists of identifying the 100 Woman Headed poorest households, whose siblings' needs and rights are not realized and 100 child-headed households with at least 4 siblings per household. The 200 households will be represented respectively by 100 women and 100 OVCs. Every Child-headed household will choose a mentor within the village whose integrity will be approved by community members during the village's meeting; making in total 100mentors within the 10 sectors of intervention. The 100 women, 100 OVCs and 100 mentors will be organized in 10 support Groups of 25 to 30 members each group (2 SG per sector) according to their facility to meet.

Activity 2: Organizing and building capacity of Women, children and mentors to form their support groups. Workshops will be conducted to provide the skills in group dynamics and day-to-day management of the groups. The training and orientation given during these workshops will be reinforced with follow up to ensure that the groups get adequately established and operational.

Activity 3: Capacity building for OVC and mentors in mentorship. Workshops will be conducted to provide with mentors and OVCs basic skills in mentorship techniques and counselling.

2.1.2. **Output 2:** Improved economic and survival capacity of at least 200 woman and child headed households each taking care of siblings by training them to produce enough food for their households and to earn income from selling surplus produce for their other needs.

Activity 1. Training in organic farming and other sustainable agricultural practices.

Activity 2. Supporting child and Woman households with planting material, construction material and livestock.

Activity 3. Strengthening the support groups towards income generating projects. Women, Children and mentors will be trained on general issues regarding business management. They will be encouraged to meet once a week not only to save and give loans but also to discuss and act on issues affecting the children, record keeping, rotational leadership in each meeting, developing new income generation opportunities, linking to other service providers including local financial institutions. Once enough experience is gained in handling and using loans, the members will apply to microfinance institutions for loans and investment in on-farm as well as off-farm income generating activities.

2.1.3. **Output 3:** Support structures strengthened for sustainability and further support to OVC and the general community.

Activity 1: Accompaniment of SG to become cooperatives. Through regular visit to SGs, the social officer and agronomist will provide more technical support and guidance to SG to help them develop enough knowledge and skills to effectively coordinate support group's activities and make linkages with service providers and microfinance institutions.

Activity 2. Linking beneficiaries to other institutions involved in related activities for longer-term support and services not provided by the project. The process will include reinforcement of collaboration with Memoranda of Understanding with various institutions, including community financial institutions such as "SACO umurenge", women popular bank and elaboration of the specific areas of support required to further support the beneficiaries.

Activity 3. Establishing community support structures for longer term broad involvement of the community in support of Children and women headed poor households. These will include the sector committees composed of representatives of the beneficiaries, community opinion leaders and the government representative in each of the 3 sectors. The committees will be further strengthened with training and orientation on issues concerning the Child rights in this particular project.

Activity 4. Preparing orphans and community to take over the management of the OVC support initiative. This will include working out plans of action for the future activities and distribution of responsibilities among the various groups set up by the project as well as the long term partner institutions.

3. Sustainability and phasing out

The purpose of this intervention is to empower the beneficiaries and strengthen them to become self sustaining and to enable them to meaningfully contribute to the development of their community. By the end of the project period efforts will be made to ensure community, women and children are more prepared to continue the following projects inputs:

- a) Maintaining food security for children and women headed poor households and other vulnerable families,
- b) Women/Children headed households and mentors are in their support groups for social support and economic solidarity of accessing input at fair prices and favourable markets for their produce. Through support groups/cooperatives members are better positioned to negotiate prices.
- c) Women /Children headed households and mentors are linked to relevant government line ministries and department as groups. These government agencies will remain as source of support in introducing new farming technologies.
- d) Women/Children headed households and mentors will be encouraged to adopt good practices which are possible within the support groups and cooperatives. These will include weekly meetings, rotational leadership in their support groups/cooperatives, keeping records of their meeting, undertaking small business besides farming so as to optimise on their saving by taking loans at faster rate and developing a vision at individual households and as groups.

4. Implementation Action Plan

Activity	Expected results with indicators	Responsible	1 st Year				2 nd Year				
			Q 1	Q 2	Q 3	Q 4	Q 1	Q 2	Q 3	Q 4	
Output 1: Improved social support system for 300 CHHs and WHHs within their own communities.											
Activity 1: Identification of project beneficiaries.	100 CHHs , 100 mentors and 100 woman headed poor households selected as the direct beneficiaries of the project and grouped in 10 support groups.	Project coordinator, field staffs and local authorities	x								
Activity 2: Organizing and building capacity of Women, children and mentors to form their support groups beneficiaries	300 women, OVCs and mentors organized in 10 SG within 3 selected sectors.										
	500 WHHs, CHHs & mentors in Support groups are trained in support group dynamics, business management and basic keeping.	Project Coordinator, field staffs	x	x	x						
Activity 3: Capacity building for OVC and mentors in mentorship and counselling.	200 CHH and mentors trained in mentorship techniques and counselling.	Project Coordinator, field staffs	x	x	x						
Output 2: Improved economic and survival capacity of at least 300 woman and child headed households each taking care of siblings by training them to produce enough food for their households and to earn income from selling surplus produce for their other needs.											
Activity 1: Training in organic farming and other sustainable agricultural practices.	300 WHHs, CHHs and Mentors are trained in organic farming techniques using on-farm learning methods	Project Coordinator, field staffs,	x	x	x						
Activity 2: Supporting child and Woman households with planting material, construction material and livestock.	300 trained WHHs, CHH and mentors are provided with planting material, construction material and livestock to practice on their farm plots.	Project Coordinator, field staffs,		x	x	x					
Output 3: Support structures strengthened for sustainability and further support to OVC and the general community.											
Activity 1: Accompaniment of SG to become cooperatives	Support groups committee' members have enough knowledge and skills to effectively coordinate support groups activities and make linkages with service providers and microfinance institutions.	Project Coordinator, field staffs,				x	x	x	x	x	

5. Participation of the target group in carrying out the project:

During the process of conceptualizing this project consultations were held in a participatory manner bringing together among others the OVC, women heading households and other members of the community in the area where the project will be implemented.

During implementation, involvement of the beneficiaries during the planning, decision making and monitoring will be a key strategy to ensure ownership and sustainability of the project.

Committees composed of representatives of the women and children heading households, mentors and community opinion leaders as well as sector's in charge of social affairs and in charge of development will be set up in each of the 10 sectors and encouraged to support the regular project staff; participation in the decision making and monitoring of the project during the course of implementation and to take over the management after external assistance phases out.

The women, OVC and mentors' support groups will themselves establish their own projects initially with guidance and support of the field facilitators, but eventually they will take up the tasks of managing and promoting their projects on their own as the project phases out.

The beneficiaries will further be obliged to train their siblings and mentors in the organic farming skills, as well as extending services and skills to their neighbors in the community and to take up leadership roles in strengthening the development needs in their villages.

The beneficiaries will contribute to the success of the project by reserving a portion of their farm plots to establish the organic farming based projects, using their own labor to establish the projects, construction of facilities to hold the livestock and providing feeds, security and undertaking to train their siblings, mentors and other members of the community that will not have the chance to directly benefit from the training given by the project staff.

Beneficiaries' Support Groups committees, Sector committee members and district umbrella committee members will be involved in community sensitization on Child rights and laws related to GBV and succession.

6. Monitoring and evaluation

Monitoring and evaluation will be ongoing processes during implementation of the project. Monitoring and evaluation will be guided by the predetermined indicators to ascertain the level of achievement. Recording of the progress of the project will be a responsibility of Bamporeze Association through the project hierarchy. The beneficiaries and the community support structures will be empowered to monitor and evaluate the performance of the project. Participation of these structures in tracking progress of the project is important to nurture their sense of ownership of the project to enhance its sustainability.

Progress narrative and financial report indicating the activity execution and resource utilization will be written and provided to the concerned parties and partners on quarterly basis. The quarterly report will constitute accumulated monthly field reports that will be compiled by the social worker and the agronomist on monthly basis. The quarterly report will be availed to all parties concerned to update them on the performance during the ended quarter achievements and for previous period. This report will provide information on implemented activities during the quarter and accumulated information on project implementation according to the predetermined indicators; challenges faced; implementation modification; program development and most significant change stories.

At the end of year, an annually financial and narrative report will be availed to all parties concerned to update them on the performance during the ended year period.

At the end of the 2nd year of the project, an external evaluation will be carried out to help determine whether the project succeeded to achieve the objectives, and to what extent.

Budget for Social and Economic empowerment of woman and child headed house holds project in Ngororero District, Western Province, Rwanda

Activities		Particulars	Details	Total cost (Rfr)	Local contribution	Funding request	
Output 1: Improved social support system for 400 CHHs and WHHs within their own communities.							
Activity 1: Identification of project beneficiaries.	6 days field visits to meet with local authorities and identify beneficiaries	Travel fees for the project coordinator and a driver	Coordinator : 10,000Rwf/day, 6 days Driver :4,000Rwf/day, 6days	84,000		84,000	141
Activity 2: Organizing and building capacity of Women, children and mentors to form their support groups beneficiaries	Training 300 WHHs, CHHs & mentors in support group dynamics, business management and basic keeping.	6 Groups of 50 beneficiaries each, 2days	Meals: 1000Rfr/day	600,000		600,000	1,010
			Transport fees for participant: 500Rfr/day	300,000		400,000	673
			Resource person : 60,000Rfr per day	720,000		720,000	1,212
			Training Material	150,000		150,000	253
Activity 3: Capacity building for OVC and mentors in mentorship and counselling.	Training 200 CHH and mentors trained in mentorship techniques and counselling.	4Groups of 50 beneficiaries each , 2 days	Meals : 1000Rfr/day	400,000		400,000	673
			Transport fees for participant: 500Rfr/day/part.	200,000		200,000	337
			Resource person: 60,000Rfr per day	480,000		480,000	808
			Training Material	100,000		100,000	168
Output 2: Improved economic and survival capacity of at least 400 woman and child headed households each taking care of siblings by training them to produce enough food for their households and to earn income from selling surplus produce for their other needs.							

Activity 1: Training in organic farming and other sustainable agricultural practices.	Training 300 WHHs, CHHs and Mentors in organic farming techniques	6 Groups of 50 participants each, 6days	Meals : 1000Rf/day	1,800,000		1,800,000	3,030
			Transport fees for participant: 500Rfr	900,000		900,000	1,515
			Resource person	2,160,000		2,160,000	3,636
			Training Material	150,000		150,000	253
Activity 2: Supporting child and Woman households with planting material, construction material and livestock.	Providing beneficiaries with planting material, construction material and livestock.	Availing land and its preparation	50,0ha, Rfr1000/day, 400days	16,000,000	16,000,000	0	-
		Planting material	Vegetable seeds	300,000		300,000	505
		200Piggeries	Construction material: 5000Rfr/pigerie	1,000,000		1,000,000	1,684
		Man power	Rfr2500/day, 3days, 400 pigeries	1,500,000	1,500,000	0	-
		200pigs	Rwf 35,000/pig	7,000,000		7,000,000	11,785
Output 3: Support structures strengthened for sustainability and further support to OVC and the general community.							
Activity 1: Accompaniment of SG to become cooperatives	Technical support to SG committee	Travel fees for field staff officers					
Activity 2. Linking beneficiaries to other institutions involved in related activities for longer-term support and services not provided by the project.	Linking SG to local microfinance institutions and Saving and Credit Cooperatives (SACCO Umurenge)						
	Market study for the surplus produced and cooperatives linkages to the market.	Resource person	60,000Rfr/day, 15days	900,000		900,000	1,515

Activity 3. Establishing community support structures for longer term broad involvement of the community in support of Children and women headed poor households.	Elections of Sector committees and district umbrella committee members	Transport fees for participants	500Rwf /participant, 60participants	300,000		300,000	505	
	Training of 60 SG committee members	Meals	1000Rfw/participants per days 30 participants, 4 days	120,000		120,000	202	
		Transport fees for participant.	500Rfr /participant per days, 30 participants , 4 days	60,000		60,000	101	
		Resource person	Training fees :60,000/days, 4 days	240,000		240,000	404	
		Training Material		25,000		25,000	42	
	Training of 3 Sector committee and 1 district umbrella committee members	Meals	2000Rwf/part., 24 participants, 4days	192,000		192,000	323	
		Transport fees for participant.	1000Rwf/part., 24participants, 4days	96,000		96,000	162	
		Resource person	Training fees : 60,000Rfr per days, 4 days	240,000		240,000	404	
		Training Material		25,000		25,000	42	
	Quarterly consultative meetings of sector committees	Meeting of sector committees	Meals : 5000Rfw per members	640,000		640,000	1,077	
	Activity 4. Preparing orphans and community to take over the	Phasing out workshop	Meals for participant	Meals: 1000Rfr/day, 2days, 32 participants	64,000		64,000	108

management of the OVC support initiative.		Transport fees for participant	Transport fees for participant: 500Rfr/day, 2 days, 32 participants	32,000		32,000	54
		Resource person	Resource person : 60,000Rfr per day	120,000		120,000	202
		Material	Training Material	25,000		25,000	42
Monitoring & Evaluation	Transport	Fuel for field activities	8 liters per day, 400 days,x2 Rfr 1000/liter	6,400,000		6,400,000	10,774
		Fuel for supervision	50 liters per day, 40 days, Rfr 1000/liter	2,000,000		2,000,000	3,367
		Contribution to the cost of vehicle	20% of Rfr12,000,000	3,750,000		2,400,000	4,040
		2 moto cycles	100% of 3,000,000	6,000,000		6,000,000	10,101
	Communication	Telephone and internet	25% of Rfr100,000	160,000		160,000	269
	Project final Evaluation	External Consultant	Rfr90,000 per days , 15days	1,350,000		1,350,000	2,273
	Project final audit	External Consultant	Rfr 90,000 per day, 10 days	900,000		900,000	1,515
Administrative cost	Office consumable	20% contribution of 200,000		320,000		320,000	539
	Contribution to salaries for coordinating staff	Program Manager (15% contribution of 700,000)		2,520,000		2,520,000	4,242
		Finance Manager (15% of Rfr500,000 contribution o)			1,800,000		1,800,000

		Accountant (contribution of 15% of Rfr400,000)		1,440,000		1,440,000	2,424
	Salaries for field staff and support staff	1 Social worker (100% of Rfr250,000)		6,000,000		6,000,000	10,101
		1 Agronomist (100% of Rfr178,094)		4,274,262		4,274,262	7,196
		1 Driver (100% of Rfr150,322)		3,600,000		3,600,000	6,061
TOTAL				77,483,000	17,500,000	58,687,262	98,800

98877