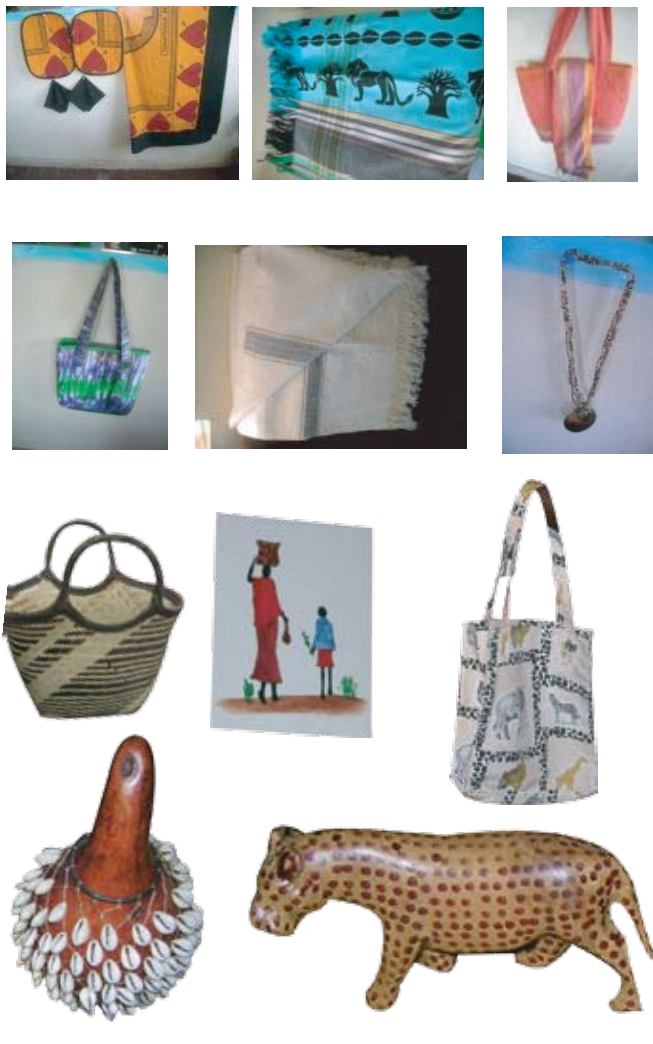


Our Handcraft Products



LBSI is currently fundraising to set up a modern vocational and leadership training school for women (the first of its kind in Kenya). The campaign is dubbed “Re-ignite the fire in the women and girls bellies.”

To participate please contact LBSI on contacts given.

The IGA department is a member of the Fair Trade Movement in Kenya (Kenya Federation for Alternative Trade-KEFAT) and conducts its business within the Fair Trade terms and conditions.

Some of the interventions supported through the income from IGA s, include medication and subsistence living for HIV positive mothers, survivors of rape and defilement and other forms of social abuse, and meeting scholastic needs for some orphans and women pursuing formal education.

LBSI has initiated a sanitary towel making project as an IGA and also to provide affordable towels to poor women and girls.

PHYSICAL ADDRESS:

Head Office: Lake View Estate.
2nd Drive-White House. Naivasha.
Tel: +254-50-2020408 / Cell: +254-722 695 890
P.O. Box 20117 Naivasha
Email: lifebloomservicesinternational@gmail.com
lifebloomservices@yahoo.com
Website: lifebloomservicesinternational.co.cc

SATELITE OFFICES:

Gilgil, Karagita, Mai Mahiu, Eastleigh-Nairobi Thika.
Embu, Nyeri & Thika.

Supported by:

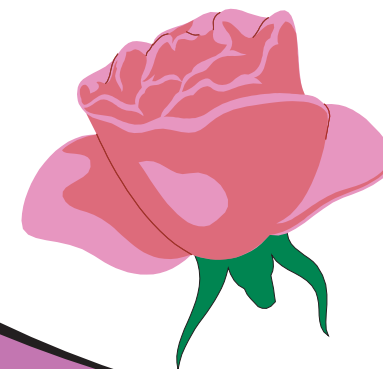


COMMUNITY VOLUNTEERS



Giving women & girls a second chance

“Life Bloom Services International (LBSI), a Kenyan registered Non Governmental Organization, exists to empower Most At Risk Populations (MARPS) women and girls through a comprehensive and integrated approach”.



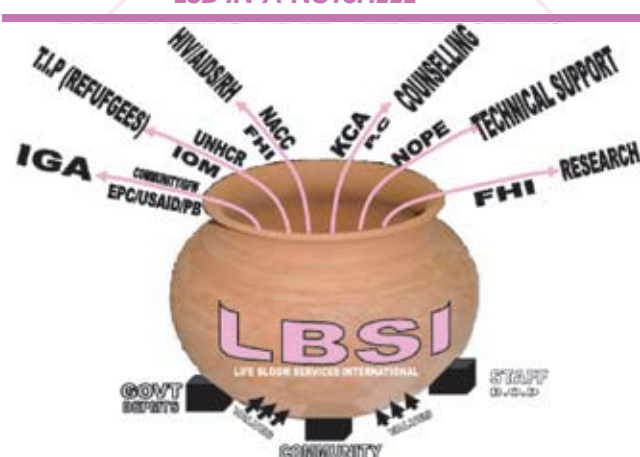
LBSI MISSION.

LBSI exist to facilitate the journey of women and adolescent girls to their inner-self for exploration and growth of the individuals' inner strength. we endeavour to support them to address possible challenges by creating a supportive and empowering environment that will help them realize their life dreams.

BSI PROGRAM.

LBSI implements a comprehensive and integrated program that supports Commercial Sex workers and other Most At Risk Populations in their pursuance of legal, economic, reproductive health, education and social rights within Naivasha District, Eastleigh (Nairobi) Thika, Nyer & Embu regions.

LSB IN A NUTSHELL



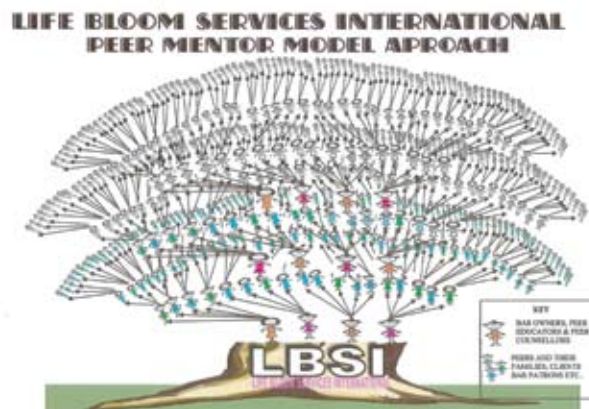
Our interventions on the human rights (for women and children) focus on:

- Poverty reduction,
- Empowerment on reproductive health, (Family Planning, HIV and AIDS e.t.c),
- Gender and gender equity,
- Education,
- Democracy and good governance.

Base Line Surveys and Research are conducted to inform the program.

Vision: Empowered individuals leading blooming lives.

Through the snowballing method, Peer Mentoring Model is applied in most of the projects, bringing on board vulnerable women and girls/children in the community who would otherwise not be able to access their human rights. The Life Bloom's family tree continues to grow.



Treemall that describes our PEER MENTOR MODEL (from 4 initial contacts to more than 2500 beneficiaries)

HIV AND AIDS AND REPRODUCTIVE HEALTH PROJECT.

We are currently working with 247 trained peer educators (mentors) in Naivasha, Mai Mahiu and Gilgil divisions of Naivasha District. We have 60 trained peer counselors who carry out counselling interventions in the community in the USAID funded APHIA 11 project in Rift Valley.

Working through the mentors, we have approximately 2,500 clients, including a small component of the Sex Workers male clients.

LBSI interventions in Eastleigh target a special component of women and girls in Commercial Sex work from the Arid and Semi Arid Kenyan communities, and illegal immigrants from neighboring politically unstable countries.

LBSI works through Bar owners and other strategic partners in all areas of operation.

TRAFFICKING IN PERSONS AND GENDER BASED VIOLENCE.

Life Bloom carries out interventions for victims of human trafficking, by identifying, rescuing, and following up on prosecution and reintegrating the survivors into the society. 36 persons, drawn from Life Blooms peer counselors pool, staff, media and heads of Government Departments have been sensitized on identifying and supporting victims through the three Ps (Prevention, Protection, Prosecution) process by International Organization for Migration (IOM). GBV and child exploitation cases are an integral component of the interventions carried out by Life Bloom Services International.

ECONOMIC EMPOWERMENT.

As a way of supporting women find alternative means of earning a living, LBSI has initiated activities towards self-reliance for the women and adolescent mothers. 42 women and girls graduated and were awarded enterprenueral and life skill certificates in June 2008, supported by project boabab. Supported with "seed money" by Global Fund for Women, 39 women have gone through structured training (Tailoring and beadwork, Hair Dressing and Beauty Therapy, handicrafts produce, catering, small grocers' business & computer), and ware awarded certificates. The training empowers them while on transit from commercial sex work, low income backgrounds or unhealthy HIV positive related way of life.



Catering Trainees