

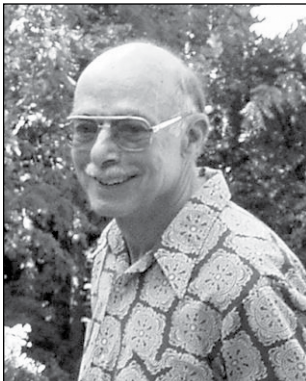
Friends of Tryon Creek State Park
2010 Annual Report

in partnership
with Oregon Parks
and Recreation
Department



mission statement

The mission of the Friends of Tryon Creek (FOTC) is to connect people to the living earth by delivering inspiring and innovative educational and stewardship programs. FOTC's goal of conserving and enhancing Tryon Creek State Natural Area is also achieved by overseeing efforts to maintain trails and facilities, creating meaningful volunteer opportunities and developing successful partnerships with Oregon Parks and Recreation Department and others who share our values and goals.



Letter from the Board President

Reflecting on the outcomes of the past year, the best news is that the Friends have rebounded from a challenging financial situation in 2009 and ended 2010 in the black. This was achieved primarily by a combination of three elements: belt tightening measures, increased income from our education programs, and the grant solicitation efforts of Executive Director David Cohen. As the world of fund raising and income from program fees become more competitive, it is great that individuals, businesses and foundations see the Friends of Tryon Creek as a worthy organization which continues to do the good work.

The good work, of course, is our high quality educational programs for all ages, our meaningful public events and our important restoration efforts.

One 2010 highlight was a record-breaking year for children participating in our field trip programs – as we filled almost every day on our calendar with school visits. Summer Day Camp, perhaps our most well known offering, also was as popular as always, though participation was down just slightly from 2009. Among events, we had another successful Trillium Festival, with the shuttle from off-site parking helping to increase attendance and plant sales reaching historic numbers. Nature Inspires Art was a fun event held on a perfect summer's evening for the attendees to share their love of art and community.

The Eco-Trails Committee and its many volunteers continue to make inroads on the English ivy and Himalayan blackberry infestations with group efforts this past year focusing mainly inside the North Horse Loop. In addition, the accomplishments of plot adopters are visible along several other trails. Maintenance of trails has also kept our volunteers busy as a rainy spring and fall energized many groups to step up and participate in this necessary work.

I look forward to another successful year in 2011 as we move forward with our strategic planning process and get to participate in OPRD's overall park planning efforts. We hope all the readers of this report continue to enjoy the Park and support our many educational and conservation efforts.

Phil Hamilton



Letter from the Executive Director

As so many of you know, the challenges of non-profits in our community and beyond have never been greater. Competition for shrinking dollars from individual, business and foundation donors intensified in 2010. It became paramount, then, that we do a better job of reaching out to tell our story and more clearly articulate how our efforts impact the community. Our optimistic 2010 annual budget seemed more and more like a distant reach for us as the year progressed and dollars became more difficult to come by. So the board and I did what we felt we needed to do – we kept our expenses as slim as we could and did everything possible to bring funds into the organization.

To see where we ended up at the “finish line” was a testament to the hard work by staff and board and the outpouring of support we received from old friends and new. Three large grants came in at year end (from Meyer Memorial Trust, the Oregon Community Foundation and Trust Management Services), along with December’s robust membership renewals, a positive year-end appeal and a range of individual contributions, all added up to push us over that magic \$500,000 income mark for the first time in our history (in a non-capital fund raising year) and help us end the year in the black.

I could not be more proud of my staff, my board and of course the many people out there who believed in us and connected with our mission and values to make this past year the success that it was. We could not have done it without my hard working staff – Stephanie Wagner, Linda Koser, Amy Hoffman, Jeffrey Gray, Melissa McIntire, Sandi Tester, Casey Newman, Rhett Wilkins, Martha West, Elisa Ford, Jessica Sweeney, Sharon Jamin, and Matthew Collins – an incredible group whose dedication to the park and to the organization’s mission is unprecedented. Along with all the amazing volunteer support we receive, from our board members, front desk hosts, ivy-pullers, trail maintainers, educators, high school partners, and event supporters, we have built a wonderful family who all share a vision of a healthy and beautiful urban park that has so much to teach us. And finally, thanks to Oregon State Parks, our steadfast partner, to whom we thank for their support and leadership as we try to create the best working team possible to care for and nurture this special place.

David Cohen

accomplishments

Overachieving has become the norm around here for the Friends. We see so many opportunities that it is difficult for us to say no – even a challenging year in 2009 did not temper our planning for 2010. So once again we were able to keep up our busy schedule of education programs, community engagement and needed restoration work here in the park. The next few pages cover just a sampling of the highlights.



accomplishments

Education Program Highlights

- The Friends continue their commitment to foster stewardship of natural areas by offering nature education programs for all ages. Over 13,000 individuals participated in programs allowing them to learn more about the park and local natural history and ecology.
- Our school field trip program served 4,703 children in 2010 with 262 presentations given and \$2,574 in scholarships to deserving students. Thanks to a grant from **Pacific Power Foundation** and a gift from **Kathryn Beaumont** and **Jeff Rogers** for their support of the scholarship program.
- Kids-In-Nature for families with children up to 7 years of age was a huge success. Children and their adult care givers were given the opportunity to learn more about the plants and animals that make Tryon Creek State Natural Area their home. This program lead to a collaboration with **Muddy Boots** (planned in 2010, executed in February 2011) to encourage parents to facilitate nature based outdoor experiences with their children.
- Our commitment to teacher education was expanded by developing partnerships with the **Tualatin National Wildlife Refuge** and the **Tillamook Forest Center** to bring Connect to Science: Through Nature to formal and informal educators from throughout the region. 51 teachers had the opportunity to expand their knowledge of nature based science inquiry and develop methods for sharing these experience with their students. This project received significant support from the **Gray Family Fund of the Oregon Community Foundation**.
- The Friends education staff began looking at methods to improve program assessment and integrate the new Oregon science standards into all of our programs for schools.
- Our spring, summer and winter Nature Day Camp programs were almost completely at capacity with 947 campers from 4 – 14 years old participating.
- Stronger partnerships were forged with the **Lake Oswego and Riverdale school districts**. All Lake Oswego 5th and 6th graders benefited from targeted watershed education programs presented in their community and here at Tryon. Riverdale 4th graders have targeted learning local ecology by learning about and removing invasive plants, and propagating plants to restore a natural area of their school yard.
- The Friends' education staff continued developing the high school internship program and our partnership with **Oregon City Service Learning Academy**. There were 12 high school interns working with either the Field Ecology Team or the Nature Guide Team in 2010.





OPPOSITE PAGE: NATURE DAY CAMP EXPLORATIONS

UPPER LEFT: OVERNIGHT CAMPS FOR GRADES 5TH - 7TH

UPPER RIGHT: PORTLAND STATE UNIVERSITY CAPSTONE COURSE

LOWER LEFT: LAKE OSWEGO WATERSHED TOUR

LOWER RIGHT: NATURE DAY CAMP FOR GRADES 1ST - 5TH

accomplishments

Restoration/Stewardship Highlights

The Friends, along with **OPRD**, continue to provide many opportunities for people to get outside, get dirty, and give back to their favorite park. Our Stewardship Saturdays, every second and fourth Saturday of the month, provide volunteers a chance to fight invasive species, as well as helping to maintain our beautiful trails for our many visitors. Adopt a Plot volunteers contribute to our larger effort to rid the park of invasive species by caring for an adopted area of the park throughout the year. We also schedule special group ivy pulls for school groups, businesses, faith based organizations, and community groups. Last year 31 groups participated in this program.

- With a wet spring and an early start to the fall rainy season, trail maintenance efforts continued for much of the year. Adding and renewing ditches to keep water from eroding trails and laying gravel in ponding low spots were the primary efforts.
- Removal of ivy in the North Horse Loop continued, with another ten acres cleared by group work parties. And a core of regular volunteers dug some extensive Himalayan blackberry patches in the same general area. Elsewhere plot adopters cleared a number of trailside ivy patches.
- A few regular volunteers killed ivy on many trees for the first time on the slope between Lake Oswego's First Addition and the Creek. More remains to be done there. And a second cutting of re-growing ivy on trees elsewhere in the Park covered some thirty acres.
- Garlic mustard (a non-native plant toxic to the soil) was removed comprehensively again in the Spring. Surveys this winter suggest that some control is being achieved but its long-lived seeds will provide new starts for several more years.
- Almost 200 trees and shrubs were planted in areas where invasive plants had been removed and there were little or no understory plants and/or conifers to provide long-term shade.
- **New Urban High School (NUHS)** has continued to be a special partner as their Youth Take Action and Environmental Science classes returned in 2010 to continue their Student Stewardship Project. Their ongoing project focuses on monitoring different aspects of the park through photo point monitoring, macroinvertebrate studies, water quality tests, and soil tests. NUHS is helping us develop base line data for the park, fight invasive species, and share our story with the community.





OPPOSITE PAGE: A RELAXING NEW URBAN HIGH SCHOOL GROUP

UPPER LEFT: NATIONAL PUBLIC LANDS DAY

UPPER RIGHT: INVASIVE SPECIES DEMONSTRATION WITH ECOTRAILS CHAIR, PHIL HAMILTON

LOWER LEFT: NEW URBAN HIGH SCHOOL WATERSHED MONITORING

LOWER RIGHT: CELEBRATING THE EARTH IVY PULL WITH COMCAST

accomplishments

Volunteer Highlights

Tryon Creek is blessed with many amazing volunteers who are the heart and soul of our programming. These dedicated people make it possible for us to lead school fieldtrips, fight the never ending battle of invasive species, greet and interact with visitors, keep our park and trails clean and safe for all, stage fun community events, and so much more. In 2010, 1,710 people gave over 15,000 hours to the park and our organization. This would equal 7 full-time staff people and over \$300,000 in labor and skills.

2010 Partner Awards

- Hands On Portland
- Portland State University Center for Science
- Tryon Creek Watershed Council
- Waggener Edstrom Worldwide

Volunteers

Thanks to our great volunteers.

Current Volunteers who have given over 1,000 lifetime hours are in bold. (Apologies to anyone inadvertently left off the list)

Phil Almgren
Eva Almgren-Friedman
Carl Almgren-Friedman
Amber Anderson
Brice Anderson
Marylin Anderson
Judy Andes
Katie Angus
Kori Ault
Lu Beck
Cindy Bowman
Peter Browning
Susan Butt
Michael Caton
Matthew Collins
Costa Columbus
Janet Conley
Jeff Conley
Judy Dannen
Cliff Davis
Mary Davis
Joan DeChaine
John DeLong
Shannon Diez
Sheilagh Diez
Richard Diffenderfer
Laura Dobyns
Melinda Dobyns
Marcy Dobyns
Brian Duffy
Tom Dunne
Cindy Ellison
Alison Fairchild
Anna Faxon
Linda Folkestad
Johnni French
Pauline Freeman
Larry Gelhar
Amy Goodwin
Audrey Graser

Rebecca Griebel
Terry Griffin
Nick Guleff
Juli Hackler
Josh Hallquist
Phil Hamilton
Ugbad Hussan
Mary Harvard
Doug Hawley
Sharon Hawley
Deborah Hill
Marcia Hollander
Sandra Hoover
Rachel Huffine
Alan Israel
Jan Johannis
Dave Johnston
Dixie Johnston
Jim Johnston
Ann Jordan
Berry Kenton
Liz Kidd
Lynn King
Tyler Kraynerud
Sarah Kreisman
Janet Lang
Kristen Larsen
Craig LaTourette
Rose Lemmer
Kaig Lightner
Coni Lloyd
Helen Lyons
Harold Mansperger
Andy McGee
Larry McLaughlin
Susanne Menezes
Mike Metroke
Ana Mihaesch
Linda Nash
Jane Newman

2010 Volunteer Awards

- Lifetime Achievement Award—Lu Beck
- Individual Volunteer of the Year—Mary North
- Trail Host Volunteer of the Year—Larry Gelhar
- Special Projects Volunteers of the Year—Brian Duffy and Harold Mansperger
- Interpretative Volunteer of the Year—Richard Diffenderfer
- Nature Center Host Volunteer of the Year—Peter Browning
- Education Volunteer of the Year—Jim Johnston
- Event Volunteer of the Year—Joan DeChaine
- Ecotrails Volunteer of the Year—Larry McLaughlin
- In a Pinch Volunteer of the Year—Jennifer Zahniser
- Student Volunteer of the Year—Laura Colgan
- Rookie Volunteer of the Year —Adam Simpson
- Liaison Volunteer of the Year —Pauline Freeman
- Most Volunteer Hours—Phil Hamilton

Jane H Nexxman
Bill North
Mary North
Don Otsby
Barbara Parker
Brittany Patton
Aubrey Poole
Patty Prado
Grady Proctor
Keith Richey
Austen Richardson
Susan Richardson
Keith Richey
Gerald Ripley
Dan Rohlf
Bruce Rottink
Peter Russo
John Salmon
Sue Sandvig
Lee Schmidt
Thomas Schwend
Travis Scott
Nora Semonsen
Ann Shankland
Tara Shepersky
Adam Kyle Simpson
Samantha Skinner
Bobby Smith
Jim Squires
Rose Tanz
Mel Taylor
Steve Trapp
Maureen Traxler
Catherine Vail
Carolyn Vernon
Sara Viernum
Melanie Wadsworth
Darren Weirnick
Alan Wells
Jonathon West
Claire Westenhaber
Leslie Wilkins
Rhett Wilkins

Anne Witt
Rachel Witmer
Jane Zahniser
Jennifer Zahniser
Jane Zwinger

Businesses, schools, and community groups

Americorps Members
Aspiring Youth
Comcast Cares
Ecumenical Ministries
Lake Oswego High School
Lake Oswego Key Club
Lake Ridge High School
Lewis and Clark Law School
Lewis and Clark College
Lower Columbia River Estuary Project
Marshal High School
New Urban High School
Nike
Ohio University Alumni
Oregon City Service Learning Academy
Oregon Episcopal School
Portland State University
Putnam High School
Rieke Service Club
Riverdale High School
Rowe Middle School
Self Enhancement, Inc
SOLV
Moss Adams
Sunstone Montessori
Sunsup Tanning Center
Tonkon Torp, LLP
University of Portland
Valley View Riders
Waggener Edstrom Worldwide
Waluga Junior High School
West Hills Christian School

accomplishments



UPPER LEFT: JANE AND JENNIFER ZAHNISER
UPPER RIGHT: RICHARD DIFFENDERFER (WITH DAY CAMP DIRECTOR, CASEY NEWMAN)
LOWER LEFT: HAROLD MANSPERGER
LOWER RIGHT: ASSISTANT COUNSELOR READING TO DAY CAMPERS

accomplishments

Event Highlights

Gathering the public in Tryon Creek is always a special event – whether big or small, the sense of connectedness is always apparent. People love to come here and celebrate this magnificent gift that the State of Oregon bestowed upon us (with the help of the Friends) and the special place it holds in our hearts. The following is a snapshot of the many events that took place in 2010.

- The **Trillium Festival** – 2010's festival was a great success by all standards. Not only did we have two beautiful, dry days which lead to record breaking crowds (5,500 estimated), but plant vendor's sales reached near record highs and there were thousands of new faces who had never been to the park or this event before. The added shuttle service mitigated the always-problematic parking issues – thanks to Riverdale High School for the loan of their parking lot for the weekend. New features including a garden art sale and private food vendor added to the festive atmosphere.
- Our annual **Chili Cook-off** – a winter event cooked up to bring some warmth to the Nature Center in the chilly days of February, had its usual array of creative chefs sharing the results of their secret recipes with about 75 hungry attendees. It was a great culinary and friend-building celebration.
- Our first ever **Annual Meeting/Volunteer Recognition Event** in February was also a great success with 70 people shoehorning into the Kraft Room to receive our first time ever Annual Report, hear a recap of the last year and then great stories from our award-winning volunteers who shared their love and commitment to Tryon.
- Our second annual **Nature Inspires Art** fundraiser featuring artwork by some of Portland's most talented artists was held on a beautiful summer evening with about 150 people weaving through the makeshift gallery and decorated grounds in and around the Nature Center. Thanks to artists Catherine Alexander, Sue Allen, Gary Braasch, David Cohen, Lisa Conway, Jonnel Covault, Marilynne Eichinger, Scott Gellatly, Jeni Lee, Patty Maly, Angelita Sermon, Randall David Tipton for sharing their wonderful images of the forest with all of us.
- **Forest Music**, our long standing summer music series, took up five Sundays last year, filling the shelter and surrounding forest with the cheerful sounds of some of our finest local talent. An enthusiastic crowd which waits patiently for each summer series to get here was once again thrilled by the diverse entertainment offered.
- **Forest Market** and **Wreath Sale** also brought some activity to the park during our usually quiet December, with festive craft booths and the traditional flow of individuals who stop by to pick up their beautiful, pre-ordered wreaths. Hundreds came through the Nature Center to enjoy a hot drink, do some holiday shopping and share the holiday spirit with our other members and visitors.



TRYON CREEK CHILI COOK-OFF 'CHILI MASTER' KEITH DICKERSON



NATIVE PLANT SALE DURING TRILLIUM FESTIVAL



NEW BOARD MEMBER, NATE REAGAN HELPING OUT AT FOREST MUSIC



NEW PARK MANAGER, JOHN MULLEN (RIGHT) WITH EXECUTIVE DIRECTOR, DAVID COHEN.

Operation Highlights

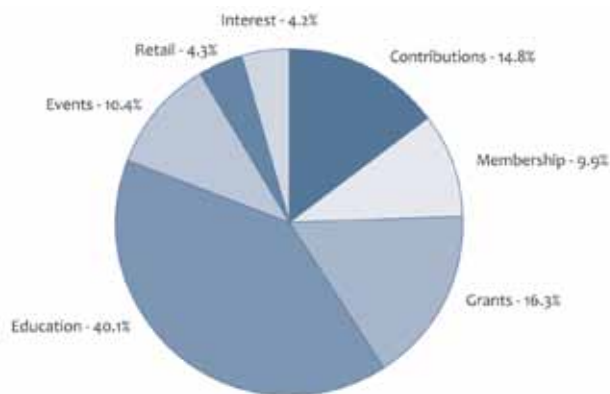
- The Friends welcomed the first new park manager in almost a decade – **John Mullen**, who is returning “home” after spending many years with parks programs around the country. Having spent a few years of his early career studying habitats in the Oregon Coast Range, John brings a wealth of experience and a love for environmental education and recreation to this position. We look forward to working closely with him to build upon this unique relationship with OPRD.
- The Friends say good-bye and thank you to **Gerald “Rip” Ripley** who after two years on the board has decided to step down. He will continue his good work with the Education Committee, a strong group that assists in guiding the development of our many public programs. We also welcomed new board members – **Pat Rau** and **Nathan Reagan** to the board. Pat comes to us from a long career in the high-tech world doing PR and marketing and Nate is a CPA with Moss Adams, one of the west coast’s most highly respected accounting and consulting firm.
- Staff changes for the Friends included the loss of long time employee **Melissa McIntire** whose energy and enthusiasm for the park is sorely missed; also leaving were **Rhett Wilkins** and **Martha West** who held down our Weekend Support position and added a steady hand to Saturday and Sunday operations. Coming on board were **Elisa Ford**, with a strong development and database background, as our new Membership Coordinator; **Jessica Sweeney**, who most recently was doing PR/Marketing work for the League of Women Voters, as the Friends first PR/Media Relations Coordinator; and **Sharon Jamin** who has more than ably filled the bookkeeper position after spending time at Central City Concern and the Museum of Contemporary Craft. In addition, **Matthew Collins** has officially joined the Friends’ education staff as Education Coordinator. Prior to joining the Friends’ education staff, Matthew was an AmeriCorps member with the Friends and an experiential educator with the Cincinnati Nature Center.
- The Friends’ new and improved website was unveiled at 2010 Annual Meeting and has already made a huge difference in allowing the public easier access to program information and registration as well as showing the park off at its most beautiful to the world. Thanks to **Jeffrey Gray** for his major effort visioning and producing this important tool.
- Thanks to OPRD staff and **Ryan Houston** in particular for rebuilding the Nature Center’s back deck which was being forcibly “redesigned” by the fast-growing Douglas fir which was shooting through the floor boards.
- We also welcomed some new members of our “immediate” family to Tryon - Day Camp Director, **Casey Newman** and park rangers **Christal Florin** and **Karen Houston** all gave birth to fledging nature enthusiasts in 2010.

accomplishments

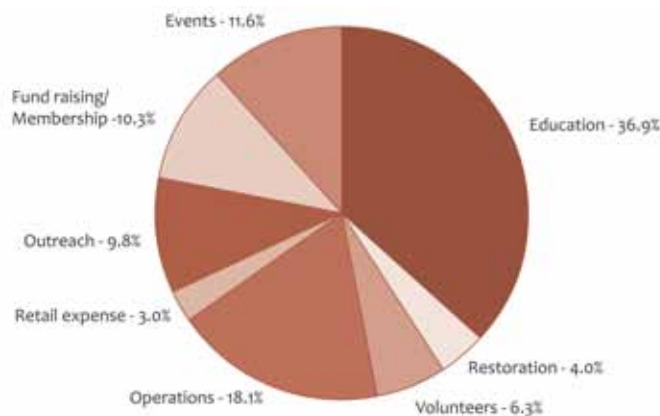
2010 Budget Report

In trying to reconcile the changes in our numbers from one year to the next we realized that 2009 was very much a year of transition as new Executive Director David Cohen came on in June of that year. Goals set for 2010 were ambitious by any standards, but in a challenging economic climate, the reach was definitely a large undertaking for the Friends. But the board and staff committed 2010 to making fundraising and earned income development organizational priorities and with everyone's efforts and diligence we saw great improvements. Ending the year in the black was significant for us as was breaking the \$500,000 income mark. While we did a great job to come under budget with our expenses, they were still greater than 2009 figures, due to rising health care costs, a full year of the director's salary and increased support for fundraising. Below are both a pie chart percentage breakdown of our numbers and a two-year comparison.

2010 Income – Total: \$508,690



2010 Expenses – Total: \$502,167



Budget Report Comparison

	2010	2009
Income		
Individual & Corporate Giving	125,762	116,924
Grants	82,782	73,182
Education income	204,129	168,187
Event income	52,683	39,561
Retail sales	21,904	25,886
Other	21,430	23,462
Total	508,690	447,202
Expense		
Restoration	20,392	20,318
Education	185,367	194,320
Outreach	49,161	44,890
Events	58,174	56,702
Volunteers	31,449	25,404
Operations	91,002	70,405
Retail	14,790	17,484
Fund raising	51,828	42,999
Total	502,167	472,522
Net	+6,523	-25,320

Development Highlights

While the world of non-profits was hugely impacted by the national recession which caused donors to cut back on their giving and in some cases reassess their giving philosophy, the Friends were able to raise more dollars (in a non-capital fund raising year) than ever in our history. This speaks volumes to the quality of programs we are producing and the understanding by the community of the role we play in advancing environmental education and building a stewardship ethic in everyone we touch.

A quick recap of 2010 fund raising highlights:

- Last year we raised over \$80,000 in grant dollars including gifts from the following foundations: Meyer Memorial Trust, Oregon Community Foundation, The Gray Family Fund of the Oregon Community Foundation, Trust Management Services, Juan Young Trust, Herbert A. Templeton Foundation, Leupold and Stevens Foundation, Pacific Power Foundation, The Union Bank Foundation, The Jackson Foundation, Wessinger Foundation, Campbell Foundation
- Corporate support continued in 2010 with contributions from the Oregon Lottery, Patagonia, New Seasons Market, Bob's Red Mill; business memberships by Tonkon Torp LLP, The Bank of Oswego and Waggener Edstrom Worldwide; and matching gifts from Standard Insurance, Pfizer Foundation, FLIR Foundation, Tektronix, Long View Foundation, Meyer Memorial Trust, and Cleveland H. Dodge Foundation.
- Fund raising successes in 2010 include an increase in individual and corporate giving by 8%, grant income increasing 13% and event income growing 33% - all fantastic numbers considering the economy.
- In 2010, FOTC lost a number of longtime friends and supporters-most notably **Bernice Stearns** and the twins **Laura Harris and Thyrsa Pelling**. Also, Portland and the Friends lost one of our most committed philanthopists, **Ned Hayes**, who supported a range of environmental organizations and causes.



JANET SCHMITT OF REI ACCEPTING A PARTNERSHIP AWARD AT
LAST YEAR'S ANNUAL MEETING

Donors to the friends

The following lists include all those who made contributions to the Friends in 2010. In advance, we apologize to anyone who has inadvertently been left of this list. Please let us know so we can make the needed corrections. Again, thank you to all those who made the Friends part of their annual giving.

Founders Circle

Anonymous (5)	Cindy & Bruce Ellison	Michael & Jan Opton
Arthur Armour	Kim Epskamp	Nels & Tory Paine
Kathryn Beaumont & Jeffrey Rogers	Darrilyn Gallagher	Traci Parker
Lucille Beck	John Gray	James Diamond & Julia Rea
Susan T. Bishop & Hal Lee	Linda & Robert Gray	Phil Richman
Dr. Michael and Ruth Brodeur	Terry & Debbie Griffin	Julie Ann Rigby
Barbara & Peter Browning	Fred & Sara Harwin	Robert Bruce Rule & Janice Brody
John & Martha Bryan	Doug & Sharon Hawley	Fredrick Seil
Duncan & Cindy Campbell	Jan L. & Gary E. Johanns	Juris & Candy Solovjovs
Brent & Laura Carreau	David Johnson	Richard Stiggins & Nancy
Emily DeCarlo	Ned & Marcie Kirschbaum	Bridgeford
Dean & Joan DeChaine	Marsha Livingstone	Melvin Taylor
Margot Dewart	Nancie McGraw	Stephanie & Rick Wagner
Laura & Ken Dobyns	Robin Migdol	Ken & Patty Wightman
	Bill & Mary North	

Major Supporters

Bob's Red Mill Natural Foods	Matching Gift Program Contributions
Gray Family Fund of the Oregon Community Foundation	Cleveland H. Dodge Foundation
Herbert A. Templeton Foundation	FLIR Foundation
The Jackson Foundation	Longview Foundation
Juan Young Trust	Meyer Memorial Trust
Leupold and Stevens Foundation	Pfizer Foundation
Meyer Memorial Trust	Standard Insurance
Oregon Community Foundation	Tektronix
Patagonia	
Pacific Power Foundation	
Trust Management Services	
Union Bank Foundation	
Wessinger Foundation	

Donors

Christopher Aaberg & Sandra Frost-Aaberg	Scott Black	Peabody	Carmin	Karen Funk & Steve Kerns	Laura Hoe Harris
Barb & Steve Aaker	Michael Blackburn & Eileen Lipkin	Kye Chun	Sophia Domreis	Marta & Donald Furman	Richard & Diana Harris
Mark & Diane Abel	Lynn Blackshaw	Verne & Mickie Church	Mark & Michelle Dorman	Jana Fussell	Jo & Mike Hatfield
Lola Abrahams	Kelly Bloch	Mary-Anne Cimino	Dee Ann Dougherty & Paul Raether	Jean Gale	Nora Hatfield
Ed Abrahamson & Cynthia Chilton	Jim and Gun Blodgett	Laurie Claassen	Deborah Downs	Colleen & Bill Gardner	Heather Hawkins
Eric and Renate Aebi	Linda Bonder & David Garten	Eileen Claiborne	Elizabeth Draper	Marcia Gartrell	Tanya Hawkins
Elise Albert & Jim Davis	Joyce & Gary Bonds	Amy and Greg Clark	Joanne Gordon	Andrea Gassman	Raymond D. Hayden
Nancy & Jorge Alfaro	Bernadine Bonn	Diana M. Clark	Angela R. Dreher	Sylvia Breed Gates	Sarah Drummond Hays
Minnie Aline	Carol Booker	Janice Cleary	Howard & Lindsay Drummond	Marian Gerard	Barbara Head and Rhys Scholes
Dave & Gerri Allen	Diana & Daryl Boom	Marvin Clifford	Joan Duckering	Peter Gertsch	Bea Hedlund
Kelly Allen	Laurel Boone	Sue Coburn	Courtney Duke	Alexandra Geynet	Kevin and Barbara Healey
Lela Allen	Rosemary Borene	Claire Cohen	Charlie Dulin Tracey Dulin	Norman Gholston	Mary Heffernan & Paul Argrimis
Wendy & Roger Allen	Linda & Ron Borkan	David & Terri Cohen	Marcia Dunham	Marvel Gillespie	David Heil & Sally Greer
Jacklyn & Lee Amberwood	David Bowles	Janie Cox Cohen and Richard Cohen	David Dunning	Turner Gilmore Inc.	Becky & Clarence Hein
Joan Amero	Jennifer Brady	Lois Ann Colaianni	Sandra Durland	Dan & Linda Gipe	Pat Helser
Brent & Susan Andersen	Linda Brecke	Patricia Weiland	Josephine Dwyer	Kristie and Richard Gladhill	Judy Henderson
Brenda Anderson	John & Sarah Brehmer	Julia Colson	Mr. and Mrs. S. Dymes	Sha Gleason	Leah Henderson
Brice & Amber Anderson	Leslie Briggs	Bryan Concannon	John Earle	Brian & Starla Goff	James Hennings
Gail Baker	Carol Brimhall	Elizabeth Smith	Michael G. Earp	Richard E. & Susannah M. Goff	The Henningsen Family
Karen Anderson	Joe & Lisa Brisley	Richard Conser & Anita Diemer	Tish Eaton	Patricia Gohier	Jennifer Henry
Margaret Anderson	Jim & Nikki Broadwell	Conser	Don and Becky Eckert	Marcia Gohman	Patti Henry
Richard and Barbara Anderson	Carl Brody	Hilary & Joe Conway	William Eddie	Lisa Goldberg	Keith & Doris Henson
Sheila Anderson	Rosita Bromley	Andrea Costello	Marilynne Eichinger	Randy Goldsmith	P. Sydney Herbert
Judy Andes	Laurie Brooks	Martha Couch & Wallace Clark	Cheryl Schultz Leonard Eisner	Gladys Goodrich & Gustave Mohr	Brenda Herman & Roy Parkins
Billie Anger	Michael Brothard	James Cox & Brenda Nuckton	Susan & Gary Elfrink	John Goodrich & Aleta Froman-Goodrich	Charles & Shirley Herrick
Anonymous (4)	Gary & Maureen Brown	John Crabbe & Jeri Janowsky	Ms. Jamie M. Ellgen	Goodrich	Nellie & Eric Hester
Cheryl Anselone	Jack & Jean Brown	Dave & Debbie Craig	Nancy Elliott	Mary Anne & Steve Goodrich	Andrea Hibbard & John Parry
Danette Applebaum	Lisa Brown	Nancy Craig	Travis Elliott ND, PC	Bill Gordon	Holly Fleet Higgins
David & Laurie Armsby	Shirley Brown	Jim & Pat Crane	Melinda & John Emery	Evelyn Grant & Rick Morse	Bradford & Ariel Hill
Maria Armstrong	Tina Brown	Sara Crate	Arthur & Charlene Emlen	George & Daria Gray	Cinda Hill
Ross & Alexandra Arnold	Kathy Bruhn	John and Jill Crawford	Deborah Emmerich	Steven & Kathryn Gray	Libby & Win Hill
Rick & Betsy Asai	Joan Harrison Buckley	Daniel & Cynthia Cristofani	Francine English	Lara Greenberg	Maude Hines
Susan Glosser	Abby Buenafe	Cheryl B. Cronin & Gary Nelson	Jordan Epstein	Gilbert & Paula Greenwood	Kirk Hirschfeld
Carl & Patty Axelsen	Kim & Debra Burchiel	Brewster & Rebecca Crosby	Ann Erlandson	Lori Greer	Jean Hoffman
Stephanie Baartz-Bowman	Susan Burkhardt	Brenda & Jim Crouser	Kristen Ertischek	Elizabeth Pruett Greg Lawler	Steve Hoffman
Michelle Bachand	Sherry Burles	Ann Crumppacker	Jana & Chuck Esler	John & Karen Gregos	Margaret Holland
Warren & Lynne Bacon	Calvin & Janice Burt	J. & Leslie Culbertson	Mary Anne Evan	Sally & Bob Griffith	Ray & Marcia Hollander
Joanne & Ronald Bailey	Betsy and Tony Bustamonte	Cynthia & Christopher Cunningham	Rochelle Farkas	Dr. Michael Grina	Mike & Marsha Holliday
Dennis & Lynn Baker	Susan Butt	Susan Curran	Dorothy & Neil Farmer	Lisa Gronseth & Glen Zimmermann	John & Jodyne Holloway
Joan & Greg Baldwin	Wendy Downing	Nan Curtis	Ellen Farr	Eileen Groshong	Michelle Holmes
Barbara Balko	Joni Cady & Jane Rosevelt	Eric Dahlin	Jules Fedota	Julie Gudmestad	Lee Honeyman
Bob Bard & Barbara Manildi	June Cameron	Armin & Peggy Dahms	Brian Felder	Laura Gustaff	Kevin House & Barbara Auburn
David & Jane Barey	Karen Cameron	Terry Dalsemer & Gail Owen	Glenn Fenske	Sara Berggren	Harold & Carol Howard
Jackie & Joe Barra	Fritz Camp	James & Mary Anne Dame	Felicia Ferguson & James Hussey	Heather Guthrie & Gil Parker	Bonnie Hoyez
Robin Barrett	Cheryl Campbell	Judy Dannen	Katherine Ferruzzi	Mark Haggard	Joe Hubert
Susan Barrett	Julia Campbell	Roger L. Dannen	Tom Grant & Kathy Fieldstad	John Hahn	Allan & Trudy Hughes
Donna & Donald Barrigan	Shelby & Andrew Campion	Deborah Dauksch Kichanan	Curtis & Mary Finch	Karen Hahn & James MacPherson	Deanne Hulden
Louise Barrow	Sara Cannon	Dorothy Davidson	Kate Firmin	Al Hainisch	Paul & Katherine Hull
Mary Bartholomew	Sally Cantrell	Bill & Jenny Davies	Kathy Fisher & Jeff Sweeney	Yvonne & Jan Hajda	Andrea Hungerford
Kristin Barton	Claire Carder	Carrie Davis	Barbara Fishleder	J. Halisey & Barbara Kennedy	Tracy Waechter
Maureen Baxter	Gary & Nancy Cardwell	Cliff & Mary Davis	Kelly Fitzgerald	Amy Hall	Jan Hurst
Roy Beaty	Peter & Nancy Carew	Anita H. Dawson	Patrick & Kris Flanagan	Michael and Deborah Hall	Nancy Husbands
Jeanette Schuster	Claudia Carlough	India de Kanter	Kathy Fleming	Robert Hall	Lucas Inling Andrea Stolowitz
Borden Beck	David & Kirsten Axelsen Carmel	Emily & David Decker	Linda Folkestad	Richard & Betty Halley	Kathi Inman Berens
Howard Beckerman	Elizabeth Carnes	David Del Mar	Laura Foltyn & Janet Pendergrass	Jane & Wayne Halling	Eliz Irwin
Brian Bedell	Miranda Carney-Morris	Shannon & MG Devereux	Sheila Ford Richmond	Dave & Jan Halsey	Lourdes Irwin
Myrna & Roland Begin	Cynthia L. Kleinegger & Roger Carpenter	Jennifer Devlin	Donna R. Fowles	Lynne Hamilton	Janice & Ben Isenberg
Mrs. H. Stanley Bennett	Jane Castello	Helen DeVol	Gerald & Heidi Fox	Phil & Rose Hamilton	Lesley Isenstein & Stephen Laveson
Nicole Bennett & Jonathan Kocsis	Ryan & Sarah Chabot	Paul & Maureen Devore	Susan and John Foy	Sarah Hamilton	Mike & Pat Ivie
Steven & Michelle Bennett	Larry & Margaret Chalfan	Eddie Diaz & Gretchen Moline	Janet Franco	Rick Hampton	Felipe Izquierdo & Maria Sobrino
Lanette Bernards	The Chandler Family	Shannon and Alberto Diez	Nancy Fraser	Clyde & Veronica Hamstreet	Amy Jack
Joyce Berney	Ernest & Sarah Chaplen	Gary Dillon, DVM	Louis and Barbara Fredd	Ken & Sally Handel	Sandra Jackson
Karen Bersack	Sharon Chatkupt Lee	Robin Dishner	Gregory A. Fredricks	Dorothy Hanes	Lauren Jacobs
Cecille Beyl	Marie Cheurning	Ralph Dobielsko & June Baumler	Jan Friedman	Peter & Betsy Haney	Yvonne Jacobs
John Bicknell	Roger & Sharon Chinn	Anne & Ed Dobson	Kathleen Frome	Helen Hansen	Jan Jacobsen
Sarah Bidwell	Les Christianson & Kris Paustenbach	Jim Dockweiler	Eugene and Martha Fuchs	Kimberly Hanson	Denise Flerchinger
Ethel Bimbach	Christine Peabody Christopher	Chris Dole	Jan Fuegy	Ally Burr-Harris	Mary Jane & Bruce Hendrickson
Amanda Black		Deborah Dombrowski & Jim	WW & Edith Fuller	Karen Harris	Gerald L. Jarboe
					Tina Jeo
					Steve Jetter

Jeff Dobbins & Susan Jewell
Cliff Johannsen
Susan Johnson
Tony & Sarah Johnson
Wendy Johnson
Craig & Jane Johnston
Gerald Johnston
Ray Johnston
Louisa Jones
Mitt Jones
Ann Jordan
Kelley Jorgensen
Brad & Lois Kanagy
Martin Kaplan
Amber Kara
Jackie Kary
Victor Kaufmann
Anne Kean
Sharon Keast & David Wirtanen
Molly Keating
Leah Keeler
John Keller
Keri Keller
Margo McGehee-Kelly
Robin Kelly
Rosemary Kenney
Berry and Kate Kenton
Cameron Keuter
Liz & Mark Kidd
Ben & Alicia Kim
Pamela Kislak & Thomas
Robinson
Mouna Khabbaz
Susan Klebl
Nicole Misiiti
Carolyn & Roger Knutson
Molly Kohnstamm
Elena Korngold
Laura Kosloff
Mike & Kathy Krall
Jackie Kraybill & Michael
Schlieski
Rebecca & Jeff Kremer
Ikie (grandparent) Kressel
Julie Kruse
Katherine Kubick
Leonard Kuhl
Laura Kuperstein
Reuel Kurzet & John A. Moore
Deirdre de Tappan
Karen Kwong & Martin Schreiber
Mrs. Robert LaFord
Janice Laird & Larry Miller
Adam Lane
Janet Lang
Jewel Lansing
Pat Large
Erin Law
Teelee Uong
Teelee Uong
Jesse Lea
James & Linda Ledridge
Stacy & Tom Lee
Caroline Lehmkuhl
laurie lev
Kathy Levy
Carlos Lewis
Karen & Scott Lewis
Karen Lewis
Lisa Lewis
Niamh Lewis
Steve & Carol Lidberg
Sheila & Ross Lienhart
Allison Lipp
Alan & Joan Lippman
Connie Lively
Amanda & Stephen Lloyd
Kathy Lloyd
Barbara Loehr
Kary Logsdon
Dewey H. Long Jr.
Janice Lorentz
Richard & Diane Lowensohn
Dana and David Lowe-Rogstad
Jennifer Lubin
Tracy Lucas & Mark Oronzio
Elizabeth Welsh
Patti Lukas
Karen Lundbera & Ron Costello
The Scott Lyman Family
Geraldine Maas
Diane Macdonald
Nick MacDonald
Sheryl MacDonald & David
Factor
Julie Rae MacLeod-Trunz
Heather MacNeill
Chuck Maggio
Wendi & Joe Makuch
Maria Malcolm
Suman Malempati

Dr. Linda Mantel
Richard & Elizabeth Marantz
Susan Marchese
cliff marhoefer
Milton R. Marks
Molly Marks
Christine Mason
Sybil Sumrow Maticich
Kenneth Maupin
Winnifred May
Marty McCall
Arehn McCarty
Sarah & Dennis McCarty
James McClain
Julie McCloud
Charles & Sarah McDermed
David McEwen
Sally McGuire
Mark & Cindy McKinstry
Laura & Jeffrey White McLary
Jennifer McLaughlin
Larry & Kathleen McLaughlin
Steve McMaster & Kathy Brock
Christy McMurtry
Cathie McNeil
Linda McNulty & Matthew
Simpson
Victoria McOmie
Marjorie Meek
Linda Meier
Jim Braly & Christine Mellon
Laurie Mercier & John Hryciuk
Sara Merten
Joann Metcalf
Mr. & Mrs. Robert G. Metz
Kevin Milbert
John Miller & Cynthia Stowell
Patricia Mizutani
Earl Molander & Ann Bremer
Rachel Monteiro
Jan and Conrad Moore
Kirk Morganson & Rebecca
Craine
Timothy Morris
Dean and Betty Morrison
Terry & Henry Morse
Beverly Moser
Dean & Lynda Mueller
Steve Mullinax & Bonnie
Messinger
Alice Murphy
Collin Murphy
Lesley Murphy
Mary Narey
Christine Nelson
Don Comer & Heidi Nelson
John & Trista Nelson
Nancy Nelson
Charli Nesbitt
Antonina Netsyuk
Beatrice Neuburg
Bee & Quent Neufeld
Patti and John Ng
Sally Nichols
Anne Niedergang
Ethel Noble
Kathy Nordquist
Dover & Bill Norris-York
Amy North
Oliver & Mary Norville
Joan O'Bannon
Bette O'Brien
Eric Nutt & Jody Oliver
Allan & Madeline Olson
Nicole Olszewski
Pat O'Neill & Jayne Cronlund
Ruth Orloff
Roger & Diana Osborn
Clare E. O'Shea
Greg Osterink
Gail O'Toole
Dr. & Mrs. A. Oyama
Terri Pace
George O. Packwood
Peter & Caroline Paquet
Renee & Mike Paradis
Jennifer Pardy
Barbara Parker
Jill Parker
Alexis Parks
Vanessa Paskill
Kirstin Paukin
Constance & Reinhard Pauly
Donna and Richard Peach
Sharon Peacock
J. Kent Pearson

Joselyn Peery
Joy Peery
Cynthia Pelley
Carol Pelmas & David Hawley
Melissa & Louis Peng
Eve & Eric Pepos
Shirlee Perkins
Steve & Melissa Peterman
Marilyn & Richard Petersen
Greg Peterson
John Peterson
Donna Philbrick
Diane Pierce
Lizz Pilkington
Allen & Mary Ellen Pinero
John & Jeanne Pizzimenti
Jami & Kimberly Poitras
Natasha Polensek
Mark & Kirsten Pontarelli
Niki & Dale Pope
Ann Poteet
Bruce Powell
Gail Powell & Kevin Davis
Kate Powell
John & Charlotte Powers
William & Joan Powers
Patty Prado
Laura Pridmore-Brown
Larissa Guran
Yvonne Prinslow
Richard Pross & Janet Nagele
Vonda Purdy-Myers
Debbie Putnam
Brendhan Quinn
Ralph and Jean Quinsey
Diane Quivey
Mary Lou Raffety
Jagdish Ragade
Dr. Raymond & Diane H. Rainka
Tophier Ramsdell
Sue Randall
Ann Ransmeier
Jennifer Maurer Skye Rapaport
Mary Lu Rappleyea
Patricia Rau
Janey Ray
Heather and Nate Reagan
Phyllis Redman
Dana Reed & Jonathan More
Randy Reese
Barry & Molly Reeves
Marilyn Rich
Tim Rich & Robina Ingram-Rich
Dr. & Mrs. John Keil Richards
Diana Richardson & Stephen
Kain
Scott & Nancy Richman
Tracy Rimel
James & Dinah Robbins
Robert Robens
Charles Roberts, Sr.
Gail Robinson
Dan Robison, O.D.
Linda & Peter Rodgers
Tony & Kristy Rodriguez
Jim & Lynne Roe
James V. & Elinore Rogers
Heather Roggendorf
Anthony Romero & Lee Salsburg
Dorothy Root
Louise Rosen
Richard & Mary Rosenberg
Gerritt Rosenthal
Kendra Rothert & Jeffrey Kaye
Ted & Holly Ruback
Judith Ruben
Jade & Kate Rubick
David & Linda Rudawitz
Don Rutherford
Mike Ryan & Carolyn Garnett
Tom Rymanowicz
Robert & Corinna Sack
Karen Sadler-Fredd
Jim & Carole Dee Salmon
John & Jane Salmon
Becky Salsburg
Melissa Sanders
Elizabeth Saunders
Marilyn Saunders
Joseph Savage
Tanya Schaefer & Kyle Johnson
Janet Schaeffer
Robert Schaeffer
Gaye & Bruce Schafer
Margaret Schaus & Jim Noonan
Becky & Scott Schiefelbein
Margaret Schiff
Julie Schimschak
Matt & Diana Schindler
Callie & William Schlippert
Megan Murphy

Susan Schnell
Tom & Mary Schoeneman
Donnarae Schofield
Ben Schonberger
Susan Schrader
Annie Scott
Helen Scott Duewel
Mark & Mary Seabright
Jennifer Seamans
Nicole & Andrew Seawright
Sally Segel & Howard Song
Ann Smith Sehdev
Jennifer Sellers
Nora & Kevin Semonsen
Nora & Kevin Semonsen
Ann Senters
Katherine Shallenberger
Ann Shankland
Pat & Sara Shannon
Elayne & Leonard Shapiro
Mike & Joan Shaughnessy
Karin Sherer
Audrey Sherman & Darren
Weirnick
Wu-Shaun Shih
Jennifer Shotts
Roger & Sandra Siegner
Muriel Sillian
Lisa Simeoni
Holly Simon
Carl & Bobby Simons
Adam Simpson
Anonymous
Arlette Slachmuylder
Douglas M. Smith
Jane Ann Smith
Shauna Smith
Stephen & Diane Smith
Steve Smith & Kelsey Wirtzfeld
Bill & Kathi Snouffer
Jim & Barbara Snow
Spencer & Vivienne Snow
Kent & Phyllis Snyder
Mary & Allen Solares
Stuart Soll
Kirsten Solomon
John and Kathleen Pierce
Somers
Connie Soper
Laura Soto
Kathrin Spaccarelli
Ruth & Sheldon Spielman
Katherine Spielmann
Richard & Shirley Spooner
Maggie & Larry Sprecher
Ray Stangeland & Coni Lloyd
Thomas Stanwood
Karl & Janice Steeck
Alice Wanke Stephens
Hans & Jette Steuch
Kristin Stevens
David Taylor
Tom Stipe
Douglas Stirling
Carolyn Stone
Christine & Will Stone
Virginia Stonick
Frances J. Stors
Muriel Strand
Mrs. Alice Streitwieser Morgan
Lori Strong
Mary Lou Strong
Kenneth Strothkamp
Barbara and Jon Stroud
Trisha Suhr
Dan Sulzbach
eileen summit
Krista Swan & Brian Litwin
Ann Cassin
Kristi Swearingen
Larry & Marie Sweeney
Colleen Sze
Sara Swarc
Janet & John Tangney
Dr. & Mrs. Ralph Tanz
Jeff Tarbell
Steve & Lenna Tarkan
Clark Taylor
Phyllis Terkla
Susan Terry & Doug Babb
Rosemary DiCandilo
Ross Tewsbury
Tom & Susan Theissen
Karen Thomas
Catherine Thompson
Elizabeth Thompson
John & Mary Thompson
Michael Thrailkill
Nila Tiwari Holcombe
Dee & George Toepfer
Lisa Taylor

Carol Shaw
Herbert Trubo
Victor & Paula Turpyn
Viktor & Mari Tymchenko
Chloa & Malcolm Ulrich
Ian Underwood & Mary McGlone
Carol Unitan
Diana Unterspan
Catherine Vail
Marie Valleroy & Alan Locklear
Peter & Eleanor Van Alderwerelt
Shannon Van Horn
Mary Vanderlinden
Consuelo Vazquez
Penny Verdict
Douglas & Kathleen Verigin
Carolyn Voit
wendy vollen
Cindy von Offenheim
Janet Voss
JoAnn Wadkins
Norman K Wagner
Laura Sisulak
Sue Walden
Kateri Walsh
Scott & Susan Walsh
Nikki & Eric Walter
Warren Wang
Mark Warkentien
John Watzke
Abigail Webb
Kathy Weeks
Grace Weinstein
Jeremy Weinstein
Jackie Weissman
Tracy & Steve Welch
Julia Tomes
Melissa Wells
Beth & Daniel Welton-Miller
Patrick & Pam Werner
Ann Taggart Wessel
Glenn L. West
Martha West
Sharon Westcott
John & Martha Westgate
Paula Wetzsteon
Diane Whitfield
Jennifer Whitten
Gene Wilcox
Marianne Wilhelm
Lainie Block Wilker
Adrienne Fischl
Bob & Catherine Degnin Williams
Elisabeth Williams & Jim
Desmond
Lise Williams
Ron & Gloria Williamson
Mary Wills
Anne Wilson
Paula Wilson
Darlene Wingard
Leslie Winkler
Rachel Witmer
Abbie Rankin
Cheryl & Michael Wiznerowicz
Barbara Wolf
Ruth Wolfe
Jen and Beth Wolfson
Courtney & Peter Woodside
Matthew Worden
Ray & Anne Worden
David & Carol Wright
Sasha Wright
Lesli Johnson
Regan Wylie & Scot MacLean
Loren Wyss
Herbert W. Yandle
Barbara & Robert Yeager
Kevin Yee
Maika Yeigh
Amy Liu
Sue Yockey
Pamela Yocum
Ronda Zakocs
Renee Rutz
Merrie Ziady
Shannon Zimmer
Rishona Zimring & Joel Sweek
Jennifer Zlatnik
Lake Grove Garden Club
Lake Oswego Chamber of
Commerce
Patrick Lumber Company
Portland Garden Club c/o
Community Outreach
Summit AirCare LLC
The Bank of Oswego
The Carolyn Foundation
Tonkon Torp LLP
Waggenger Edstrom Worldwide

In Honor of...
**Rob and Laurie Wagner's
Wedding**
Catherine and Michael Dembrow
Ronald E Cinniger and Eileen
Nolan Kressel
Carmen Cinniger Timberlake
and Rufus Timberlake
Josee Richard
Kim Epskamp
Lucille Beck
Cecelia & Robert Huntington
James & Wendy Inkster
Jen Sanford
Julie McCloud

In Memory of...
Bernice Stearns
Anonymous (1)
Lucille Beck
Rachel Bard
Matthew Somers
Linda & Robert Gray
Carolyn & Roger Knutson
Doreen Link
Raymond D. Hayden
Tryon Creek Daytrippers
Christina Conroy
Marjorie Dykeman
Mary Goodrich
DeWayne and Janet Howell
Lowell & Melva Lux
Vicci Martinazzi
Phyllis Redman
Jaska Thompson
Margaret Wilson
Melvin Taylor
Verne & Mickie Church
Loeta McElwee
**Beverly and Moris "Mac"
McElwee**
Loeta McElwee

Don Chambers
Joanne Chambers
Henry & Mary Jane Sjoblom
Lisa Sjoblom
Roberta Bauer
Kristin Calhoun
L. Jean Rowe
Martin & Carolyn Winch
Scott & Katrina Woltze
Lucille Beck

Margery Meeker
Lucille Beck
Geraldine Maas
Marcella Dart
Laura Harris and Thyra Pelling
John Orloff and Jean Clarice
Scholtz
Robert Peirce
Marguerite Foeller
Michael Hudnall
Linda Nelson
Joyce B White
Christene & Paul Woodland
Richard and Lynne Hoe
Mary Peirce
Sallie Leach Jackal
Doug & Sharon Hawley
Doug and Stephanie Wagner

Ned Hayes
Lucille Beck
Helene Bremer
Fred Stokeld

Lela Tipton Allen
Ruth Skaar
Jack B. Wills

Tex and Denise Leach
Sallie Leach Jackal

Roberta Bella
Eliz Irwin

FRIENDS OF TRYON CREEK STATE PARK

11321 SW Terwilliger Blvd.
Portland OR 97219

Nonprofit Org.
U.S. Postage Paid
Lake Oswego, OR
Permit no. 84

The Publication is produced with the
assistance of **Environmental Paper & Print**
www.tryonfriends.org

staff



David Cohen
Executive Director



Stephanie Wagner
Education Director



Linda Koser
Education Coordinator



Matthew Collins
Education Coordinator



Casey Newman
Nature Day Camp Director



Amy Hoffman
Volunteer/Stewardship Coordinator



Jeffrey Gray
Communication Designer



Elisa Ford
Membership Coordinator



Sandi Tester
Office Manager/Registrar



Jessica Sweeney
Media/PR Coordinator



Sharon Jamin
Bookkeeper

2010 - 11 Board of Directors

Phil Hamilton – President
Sharon Hawley – Secretary
Peter Browning – Treasurer
Laura Dobyns – Past President
Lucille Beck
Judy Dannen

Joan DeChaine
Cindy Ellison
Terry Griffin
Patti Henry
Jan Johannis
Jeff Lang

Gary Pagenstecher
Pat Rau
Nate Reagan
Phil Richman
Darren Weirnick