



Introducing the
Open Green Map

Green Map System: Promoting inclusive participation in sustainable community development since 1995



Engaging over 550 communities in 54 countries, more than **365 locally published Green Maps** are already being used by millions of people



We partner with students, community groups, NGOs, tourism and city agencies, eco-entrepreneurs and others



Thousands of local green living, nature, social justice and cultural sites have been charted in cities, towns and villages



Barcelona's Sun Factory



Local Farmers & Artisans Market



Robeson US's kayak tours



Yogyakarta ID's Geologic Feature



Breda NL's Eco Center



Hybrid Mass Transit

We offer adaptable tools that help Mapmakers create compelling local maps of all scales and formats



Icons Use as a font with any computer application or on stickers

Mapmaking Guides Adaptable for print or web maps, community involvement, etc.

Multimedia Resources Multi-lingual books, guides, workshops, exhibits, websites

Archives Green Maps, stories, videos, presentations and exchanges

Green Map® Icons
Version 3
GreenMap.org

Sustainable Living

GREEN ECONOMY

TECHNOLOGY & DESIGN

MOBILITY

HAZARDS & CHALLENGES

Nature

Culture & Society

Participating in the Green Map System | Green Map Greenhouse

<http://www.greenmap.org/greenhouse/en/participate>

DIRECTIONS TO A SUSTAINABLE FUTURE

Participating in the Green Map System

Green Map System is a collaborative project with important social and environmental impacts. Green Maps are direct, democratic communication, dependent on local knowledge, action and responsibility. Mapmaking teams have the commitment, networks, skills and spirit it takes to initiate and complete this challenging project. You are invited to volunteer to become the leader of your community's Green Map team and make a major contribution to your home's healthier, more sustainable future.

Potential Green Mapmakers should explore the profiles in the Maps section, then go to the [Mapmaker Registration](#) page.

Student Green Mapmakers, please start with [Youth](#) or [University](#) introduction or explore the Maps by theme.

If you are interested in participating as a:

- **User of the Green Maps** - please start in our [Maps](#) section.
- **Researcher** for an in-depth project - check the [Research Projects](#) introduction.
- **Journalist** - check the [Press Room](#) in our [News](#) section.
- **Supporter of Green Map System**, see [Support Us](#) or use the [Donation](#) box on the right.
- **Global Citizens** - check links on the top left to our multi-lingual resources.

THINK GLOBAL MAP LOCAL

DIRECTIONS TO A SUSTAINABLE FUTURE

GREEN MAP SYSTEM
STYLE GUIDE 2007
Especially for Printed Maps

Mapeando Nuestra Tierra Común

una que es nuestra para el mundo entero y compartido

Proyecto de Mapas Comunitarios de Comunidades Green Map System
Mapas Verdes de las Américas

However, the process remains daunting for many,
preventing important local findings from being shared



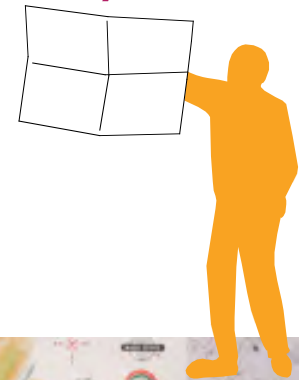
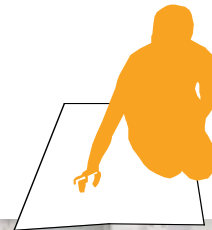
Development

Research

Design

Production

Without losing the valuable community organizing, research and dissemination processes, can Green Map System help lower technological and financial barriers? And, dramatically increase participation, exchange and impacts!



Our solution: Develop the Open Green Map platform to increase participation and address diverse (g)local needs



Merge open source and Google Map technology, our global icons and local knowledge to create a constantly evolving cross-cultural guide to local sustainability strategies and best practices



Instantly accessible, Open Green Map is now in Preview.

Celebrate its global launch with us on June 5 2009!



World View starts with with 2 sites from each map, zoom for more. Public can add sites later.

The screenshot displays the Open Green Map website in a preview mode. At the top, there is a navigation bar with links for 'About', 'How to Make a Map', 'FAQ', 'Design Preview', 'Maps', and 'GreenMap.org'. The main header features the 'open GREEN MAP' logo and the title 'Preview the Open Green Map'. On the right side, there are buttons for 'Create new account' and 'Log In'. Below the header, a 'Home' link is visible. The central part of the page is dominated by a world map in 'World View' mode. The map is populated with various icons representing different categories. A callout box over the map states '110 icons on the map, Zoom in to view more.' To the right of the map, there is a 'Legend' section titled 'Green Map Icons' with three categories: 'Sustainable Living', 'Nature', and 'Culture & Society'. Below the legend is a 'Get our Newsletter' form with an input field for 'your email address' and a 'GO' button. Further down is a 'Google Translate' widget with a 'Select Language' dropdown menu. At the bottom right, there is a 'Testimonials' section with a quote: '...since it is interactive, the locals who really know their home can give the inside scoop - it'll be like being with the green in-crowd wherever you are...' attributed to '- EcoGeek.org' with a 'more' link. The footer contains 'Legal' and 'Contact' links. The bottom of the map area includes a copyright notice: 'Icons © Green Map System, Inc. 2008. All rights reserved. Green Map® is a registered trademark and used with permission.' and 'Map data ©2008 Europa Technologies - Terms of Use'.

Explore the map by clicking each site. You can filter your view by toggling the Legend's icons.



Although the website's design is in progress, it's easy to explore the first 40 maps today

English About How to Make a Map FAQ Design Preview Maps [GreenMap.org](#)

open GREEN MAP **Baltimore Green Map**
Baltimore United States

Home > Groups >

Map Satellite Hybrid Terrain

Create new account Log In

Legend Info Search

Green Map Icons

- ▶ Sustainable Living
- ▼ Nature
 - ▼ Land & Water
 - ▼ Flora
 - ▼ Fauna
 - ▼ Outdoor Activities
- ▶ Culture & Society

Toggle icons to gray out topics and create a filtered map for your personal exploration of [more >>](#)

Icons © Green Map System, Inc. 2008. All rights reserved. Green Map® is a registered trademark and used with permission.


Legal Contact

To locate the Mapmaker's overview, open the info window. Click tabs for public comments and interaction




Several icons describe each site. Info Tab links to Profiles and locally designed map PDFs

English About How to Make a Map FAQ Design Preview Maps GreenMap.org

open  **Baltimore Green Map**
Baltimore United States

Create new account Log In

Legend Info Search

 **baltimore green MAP**

View: [Mapmaker Profile](#)
View: [Map Website](#)
View: [Map Profile](#)
Download: [Map](#)

Add a site! Add comment!
Thus far resources mapped extend from Linthicum to Monkton.

Begun: Apr 2008
Updated: 2 hours ago

Outcomes
Number of sites: 311
Team members: 4
Comments: 18 [more](#)

Add to this Green Map
[suggest a site](#)

Maryland Zoo
Wildlife Center / Zoo


Overview Comments (9) Connections Multimedia Impacts

The Maryland Zoo in Baltimore marked its 130th anniversary in 2006. It is the third oldest zoo in the United States, dating back to 1876. It was created by an Act of the Maryland General Assembly that called for "a zoological collection within the limits of Druid Hill Park for the purpose of public exhibition for the instruction and recreation of the people."

That collection was quite different from the one found in the Zoo today. The Zoo's focus is now on wildlife conservation and education, with several projects undertaken to back this up.

Hours and directions: www.marylandzoo.org

Druid Hill Park
Baltimore, MD 21217
410-366-5466
www.marylandzoo.org



★★★★☆
Share this site
Flag this

Added 04/30/2008 by Carol M to Baltimore Green Map

Icons © Green Map System, Inc. 2008. All rights reserved. Green Map® is a registered trademark and used with permission.

Legal Contact

At the Multimedia tab, everyone is invited to display their own images and videos of the site via Flickr, YouTube, etc.



Later, a wider range of images, PDFs, podcasts or other multimedia will be available here

A screenshot of a web browser window titled "Maryland Zoo" overlaid on a Google Map. The window displays the zoo's name, address (Druid Hill Park, Baltimore, MD 21217), phone number (410-366-5466), and website (www.marylandzoo.org). Below this is a navigation menu with tabs for Overview, Comments (9), Connections, Multimedia (selected), and Impacts. The main content area features a video player showing two African penguins. To the right of the video is a text description: "Penguins at Maryland Zoo" followed by "Taken at the Baltimore Zoo, these African Penguins are participating in an enrichment program." Below the text, it says "added by CarlosM 5/20/08" and provides an HTML embed code: "<object width='225' height='18". To the right of the text is a section titled "Videos / Images add" with a small thumbnail of an elephant and another thumbnail of a person. The background map shows the area around the zoo, including labels like "Parkville", "Wabash Ave", and "Druid Hill".

The Connections tab now helps users quickly compare sites worldwide that use the same icons



Later, this tab will also include volunteering, getting there and other kinds of connections.

A screenshot of a web application window titled "Maryland Zoo" overlaid on a Google Map. The window contains the following information:

- Maryland Zoo** (Title)
- Wildlife Center / Zoo (Subtitle)
- Address: Druid Hill Park, Baltimore, MD 21217
- Phone: 410-366-5466
- Website: www.marylandzoo.org
- Navigation tabs: Overview, Comments (9), **Connections**, Multimedia, Impacts
- Text: "Compare related sites, explore the related maps, find out about volunteering, how to get here and more. Soon, you will find ways to share this map here, too."
- Related Sites** (Section Header)
- List of related sites:
 - [Vurma](#)
117 38 Stockholm
Sweden
 - [Five Loaves Cafe](#)
Mount Pleasant
United States
 - [Teaterbaren](#)
111 57 Stockholm
 - [Vurma](#)
113 62 Stockholm
Sweden
- Other menu items: Related Maps, Volunteering, Getting Here, Sharing

The Impacts tab indexes important data that describes how each site benefits individuals and communities



Now, map-wide outcomes can also be viewed. Later, find more advanced survey tools, calculators.

Maryland Zoo
Wildlife Center / Zoo

Druid Hill Park
Baltimore, MD 21217
410-366-5466
www.marylandzoo.org

Overview | Comments (9) | Connections | Multimedia | **Impacts**

Impacts Index

Impact Category	Count
Changed a Habit	120
Greened My Work	110
Saved CO2	10
Protected Nature	30
Raised Awareness	40
Connected Locally	110
Took Action	80
Other	20

Because of this site, I

"I started my own blog dedicated to spreading knowledge about animal conservation" **AndrewS**

"I've been volunteering here since my visit last september!" **Rocklandanna**

"I've been interested in animal species since I was very young, and my experience at Maryland Zoo was one of the most intellectual experiences I've ever had. After visiting the zoo a few times, I finally decided to take up zoology at my university!" **CarlosM**

342 People discovered this site because of this map. [Did you?](#)

Any language can be used in the info windows. We are translating key interfaces to invite broader participation



Spanish, Portuguese, Indonesian & Swedish are underway. Static pages have a translate tool

Behind the scenes, map making and team management tools rely on simple design and conventions for ease of use



These forms will become easier to use with cloning, icon charts, offline spreadsheet for batches

English About How to Make a Map FAQ Design Preview Maps GreenMap.org

open GREEN MAP Submit Green Map

Home > Create content >

Title of Map: *

Type of Map:

- None -
- Citywide Theme
- Traveler
- Workshop
- Youth-made

Icon

Choose which Green Map icons can be used on this map. These are the only icons that that will appear on your map and its legend. You can always edit your map and change these.

- Sustainable Living
- Nature
- Culture & Society

City or Region: *

This should be easily recognizable

Province:

State/Province/County

Country: *

Building Your Map Team: *

- open - anyone can join your team by clicking a link on your map
- moderated - anyone can request to join your team, but you must approve each request
- invite only - you must send an email from the website to invite each member

Team members will be able to add sites to your map. At a later stage you can

- registration form
- list in groups directory

private map

You should keep your map private while you are developing it. When you have added some sites and are happy with how it looks you can change this. A private map can be seen by you and your team members, but not by anyone else.

Building Your Map Team: *

- open - anyone can join your team by clicking a link on your map
- moderated - anyone can request to join your team, but you must approve each request
- invite only - you must send an email from the website to invite each member

Team members will be able to add sites to your map. At a later stage you can

- registration form
- list in groups directory

private map

You should keep your map private while you are developing it. When you have added some sites and are happy with how it looks you can change this. A private map can be seen by you and your team members, but not by anyone else.

Description of Map:

Home >

List Configure member roles Invite new members

Here you can assign group roles to members. This will give that member

Roles

Baltimore Green Map (unsubscribe):

- team member

KJS (unsubscribe):

- team member

open GREEN MAP Members

Home >

List Configure member roles Invite new members

Write a message to accompany the email invitation that new members will receive

User 'Baltimore Green Map' has invited you to join their team on the Open Green Map.

New team member

Email Address

Select which map(s) to add the new user to

- Baltimore Green Map
- Baltimore Area Farmers Markets
- Charles Village/Greenmount Green Map

Add another person

Mapmakers or users can now choose Google Map's street, satellite or terrain view with more options to come



Later, choose Google Earth, Open Street Map, historic or handmade base maps

English [About](#) [How to Make a Map](#) [FAQ](#) [Design Preview](#) [Maps](#) [GreenMap.org](#)

open GREEN MAP **Baltimore Green Map**
Baltimore United States

[Home](#) > [Groups](#)

[View](#) [Edit](#) [Email Team](#) [Mapboard](#) [Widget](#) [Members](#) [Add a site](#)

Map **Satellite** Hybrid Terrain

Green Map Icons

- ▶ Sustainable Living
- ▶ Nature
- ▶ Culture & Society

Toggle icons to gray out topics and create a filtered map for your personal exploration of more >>

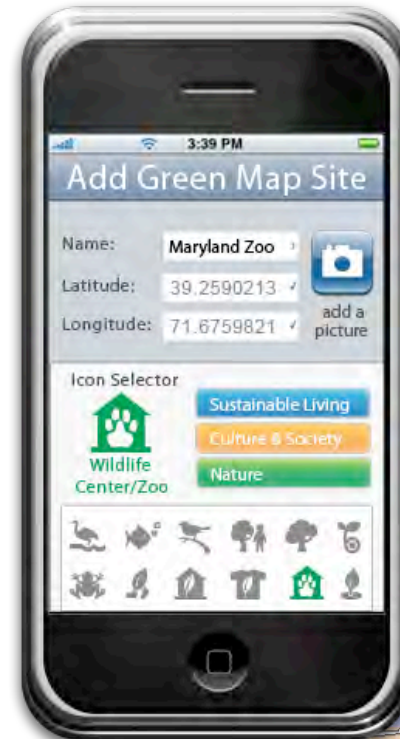
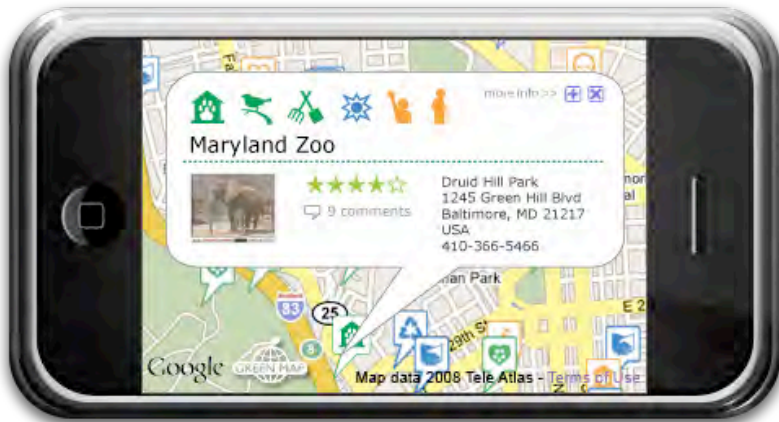
Icons © Green Map System, Inc. 2008. All rights reserved. Green Map® is a registered trademark and used with permission.

[Legal](#) [Contact](#)

Explore the Open Green Map by iPhone now, with other wireless devices and onsite markers to come



Adding or enhancing sites by phone, What's Nearby list for low-tech mobile use, GPS, etc



Basic widgets let Mapmakers embed Open Green Maps in websites and blogs now, Facebook App is to come



Coming soon: Lines & areas, create widgets, share a tour, static views and other sharing

facebook Profile edit Friends ▾ Inbox ▾ home account privacy logout

Green Map System
What are you doing right now?

Networks: New York, NY
Birthday: March 25
Hometown: New York, NY

Mini-Feed
Displaying 3 stories Import | See All

July 7
Thomas Turnball added 3 new sites to Rockland, NY

June 30 9:39am Comment
Green and Anna Karlsdóttir are now friends. 10:45am Comment

Information

Contact Info
Email: carlos@greenmap.org
Other Phone: 212.674.1631
Current Address: 220A East 4th Street

Online Friends (2)

Excitement is building, and the Open Green Map is gaining recognition, even before it is officially launched!



“This online map program is fabulous and I'm inspired. What a cool way to get connected and see what's green around the country.”

Planet Pink n' Green

“...since it is interactive, the locals who really know their home can give the inside scoop – it'll be like being with the green in-crowd wherever you are... even my own town – will suddenly have a whole slew of new secrets revealed.”

EcoGeek.org

“It's one of the more intriguing Google Maps interface efforts that I've seen, and certainly in line with their exquisite map design efforts to date ... I look forward to contributing what I know about my locale.”

Spatial Sustain

“The Stockholm Green Map is now fully digital...you are encouraged to list information or provide comments, thanks to an innovative Open Green Map.org platform used by Green Mapmakers worldwide.”

Delta Airlines magazine

Open Green Map team, summer 2008



Featured: NetSquared
3rd: Tele Atlas Maps in Apps
Finalist: We Media Pitch It
Top 10: America's Giving Challenge



Join with us to help people everywhere take part in creating and promoting sustainable communities



Skill-building and Leadership through Green Mapmaking:

- Tech, Communications & Ecological Literacy
- Analytic and Visual Expression
- Cross-culture Collaboration & Exchange
- Voice Assessment of Current Issues
- Orientation to Community Assets & Challenges
- Create a Lasting Record of Change
- Experiential & Service Learning
- Planning & Visioning

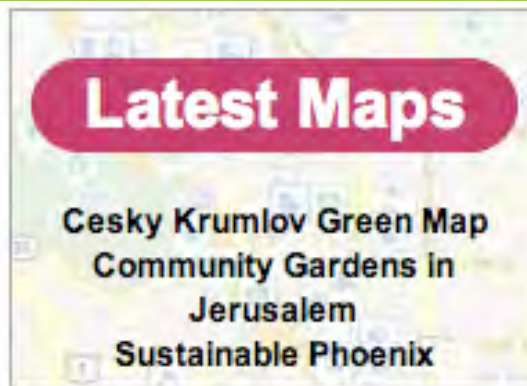


“If the best greening resource in the world is around the corner but no one knows about it, what good can it do?”

Yelitza Espinosa,
Pereira Colombia Green Mapmaker



Think Global, Map Local!



Explore GreenMap.org
and get involved!



Contact Green Map System:

info@greenmap.org

+1 212 674 1631