

2 0 1 0

A U T U M N E D I T I O N

in the SMALL corners

FRIENDS OF WARM HEARTH, INC. NEWSLETTER

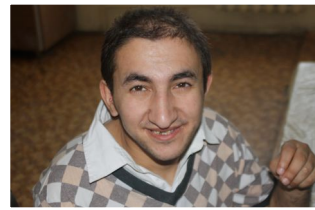
✕ Go the Way that Opens ✕

Anna and Sassoon

THE POSSIBILITY OF A SECOND HOME

As most of you know, it was our sincere hope to bring Anna and Sassoon back home this year. They have endured years in the psychiatric clinics near Yerevan. Erik Logan and Natalie traveled again to Armenia to work with the staff to this end (see page 2 for details). Despite the effective training, we are disappointed that we are not able to bring them home. This is due to a new and unforeseen policy decision by government officials in Armenia. Their vision for group homes in Armenia is to have separate homes for individuals with more acute needs, which coincides with the vision of our leadership in Armenia as well. While this most

certainly is an exciting prospect and an idea we have long held and considered, it will take time and resources to bring it to fruition. Even still, it appears to be the only path before us. The Quakers have a proverb: "Go the way that opens." We are trying to heed this wisdom as we walk a path that is not yet light. We take comfort in the fact that when Warm Hearth began the path before us was uncertain. Please hope and pray with us that Anna and Sassoon (pictured at left) will be able to hold on as we work to this end. Thank you for standing with us in this place and for leaping with us, when necessary. Yes, thank you.



Gayane

is engaged in almost every aspect of life at Warm Hearth. It is a pleasure to see her so invested and fulfilled. She has strong and

mutual relationships with the staff and other residents. She is busy embroidering lovely napkins, handkerchiefs and table cloths to sell. She loves university life and is thriving in that setting. She studies hard and is learning the trade of carpet-making. She loves to sit at the loom in our home and weave. She helps in the kitchen and has very much made Warm Hearth *hers*. I loved watching her in August laugh and dance, sing and study. We all went to Arzni one day - on an all-day picnic - and Gayane's face lit up as we watched puppet shows. She enjoyed wandering the paths and drinking water from the ground springs. She danced under the shade of the trees. She knows how to celebrate and live well.

Five Years Later

A few words from Natalie

In August I traveled again to Armenia to see our residents and all that has transpired in the home in the last year under Alya's care. I realized it has been five years since purchasing what was an empty home but now is bursting at the

seams, surrounded with flowers, freshly painted, full of the scent of fresh pastries and is an everyday *home* to Alina, Davit, Roman, Davo, Gayane, Yulia, Hasmik, Armine, Anahit, Agappy and Susanna. As I wandered the halls I was reminded of the beginning days and the seeming impossibility of the task

at hand. I was reminded of the first night the residents slept in the home and how the furniture was still unassembled. We were all bleary-eyed with joy and fatigue. It is good to remember where we have come from to remember where we are going. To my mind, these are inseparable.





Long-Term Investment

Erik Logan (pictured above left) came to Armenia for the second time to work with our staff and improve the lives of all our residents. As many of you know, he has almost twenty years of experience in mental health care as a psychiatric nurse. His training was a follow-up to last year's and was focused around honing the staff's crisis management skills and designing behavior support plans. Erik did an incredible job problem solving with the staff and helping them gain insight into some of the challenges of this work. Furthermore, it was invaluable to have the continuity and a trainer willing to come two years in a row. Our staff

were able to ask questions and receive feedback on their work this past year. The skills that Erik was able to transfer are already being put to use. While one outcome we had hoped for was to bring Anna and Sassoon home, we are confident that the training will benefit our current residents and many others in the future. We are grateful for Erik's tireless work on our behalf, for our translator Anna, and for those of you who made this training possible by providing resources. We look forward to seeing how these skills will serve Armenia in the future - and its vulnerable population of individuals with disabilities and mental illnesses.

**SUSTAINABILITY
IS ANOTHER
WORD FOR
JUSTICE.**

*Providing a home for
Armenian Orphans
with Disabilities*

**Your kindness
makes all the
difference.**

DONATIONS CAN BE SENT TO:

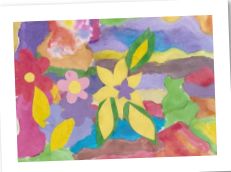
FRIENDS OF WARM HEARTH
PO BOX 4784
SUNNYSIDE, NY 11104

(480) 921-1181

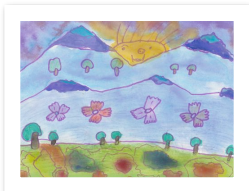
WWW.FRIENDSOFWARMHEARTH.ORG

NATALIE.RIZZIERI@GMAIL.COM

Friends of Warm Hearth, Inc.
is a 501(c)(3)
charitable organization.



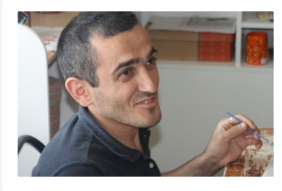
- We have packets of notecards available that display four of Alina's new paintings (pictured here). If you would like to purchase a packet of four cards, they are \$10 (+ shipping). Please notify Natalie and she will send them to you. They would make great Christmas cards as well!



- Please return the enclosed postcard so we can keep our mailing list updated and better serve you.

NOTES & NECESSITIES

- A special thanks to Lee Ann Williams for representing Warm Hearth at the St. Vartan's bazaar in Oakland, California. Thanks to all those at St. Vartan's for continuing to support us for and inviting us into your community.



- California State and the City of Seattle employees are now able to give to Warm Hearth through their employee charitable contribution program. Thanks again to Colleen Hardin and Keith Van Essen.

*Everyone can do
something
to bring some
portion of misery
to an end.*

**OUR DEEPEST
GRATITUDE
TO ALL THOSE
WHO MAKE
WARM HEARTH
POSSIBLE.**

FINANCIAL DETAILS
CAN BE PROVIDED
UPON REQUEST.

*Our 2010 Goals:
loving care for all our
residents & a solution
for Sassoon & Anna.*

PLEASE CONSIDER
PARTNERING
WITH US.

If you wish to unsubscribe
from this newsletter or
receive it electronically,
please email us:

info@friendsofwarmhearth.org
natalie.rizzieri@gmail.com