

Wednesday, March 27, 2013  
1:21 AM

# GLOBEMED AT RHODES COLLEGE

2011-2012 Annual Report

*students  
and communities  
improving health  
around  
the world*



**GlobeMed is a network of university students that partner with grassroots organizations around the world to improve the health of people living in poverty**

**AMHERST COLLEGE**  
Pastoral de La Salud  
San Salvador, El Salvador

**BETHEL UNIVERSITY**  
Rural Economic  
Development Association  
Svay Rieng, Cambodia

**BOSTON COLLEGE**  
CCC-UNSC  
Ayacucho, Peru

**BROWN UNIVERSITY**  
Ungano Tena  
Nairobi, Kenya

**BUCKNELL UNIVERSITY**  
KIHEFO  
Kabale, Uganda

**COLUMBIA UNIVERSITY**  
GWED-G  
Gulu, Uganda

**CORNELL UNIVERSITY**  
CEPAIPA  
Guayaquil, Ecuador

**CU-BOULDER**  
HHC, Jawalakhel, Nepal  
Courage Is Change  
Denver, Colorado

**DARTMOUTH COLLEGE**  
Kachin Women's  
Association Thailand  
Chiang Mai, Thailand

**DEPAUL UNIVERSITY**  
ASOSAP  
Alta Verapaz, Guatemala

**DUKE UNIVERSITY**  
Salud Sin Limites  
Siuna, Nicaragua

**EMORY UNIVERSITY**  
MAP Foundation  
Chiang Mai, Thailand

**FLORIDA STATE UNIVERSITY**  
ARM  
Orissa, India

**GEORGE WASHINGTON UNIVERSITY**  
RVCP, Butare, Rwanda  
Community of Hope  
Washington, D.C.

**GEORGETOWN UNIVERSITY**  
Primeros Pasos  
Quetzaltenango, Guatemala

**INDIANA UNIVERSITY**  
CEMOPLAF Cajabamba  
Cajabamba, Ecuador

**LAWRENCE UNIVERSITY**  
Health Development  
Initiative  
Kigali, Rwanda

**LOYOLA UNIVERSITY CHICAGO**  
Jambi Huasi  
Otovalo, Ecuador

**MIT**  
Women Mobilizing for  
Development  
Bokeo, Laos

**MIDDLEBURY COLLEGE**  
Gardens for Health  
International  
Gasabo, Rwanda

**NORTHEASTERN UNIVERSITY**  
Kitovu Mobile AIDS  
Organization  
Masaka, Uganda

**NORTHWESTERN UNIVERSITY**  
HOPE Center  
Ho, Ghana

**OBERLIN COLLEGE**  
Center for Community  
Health Promotion  
Hanoi, Vietnam

**PENN STATE UNIVERSITY**  
ACUDESBAL  
Chiapas, Mexico

**PRINCETON UNIVERSITY**  
Medical AIDS Outreach  
Montgomery, Alabama

**RHODES COLLEGE**  
A Ministry of Sharing  
Health and Hope  
Managua, Nicaragua

**RUTGERS UNIVERSITY**  
Cooperation for Social  
Services and Development  
Phnom Penh, Cambodia

**TRUMAN STATE UNIVERSITY**  
Maison de Naissance  
Torbeck, Haiti

**TUFTS UNIVERSITY**  
Nyaya Health  
Achham, Nepal

**UNIVERSITY OF CHICAGO**  
ASPAT  
Lima, Peru

**UNIVERSITY OF CINCINNATI**  
Social Action for Women  
Mae Sot, Thailand

**UCLA**  
Nwoya Youth Center  
Anaka, Uganda

**UNIVERSITY OF DENVER**  
Buddhism and Society  
Development Association  
Kampong Cham, Cambodia

**UNIVERSITY OF MICHIGAN**  
Tiyatien Health  
Zwedru, Liberia  
Joy-Southfield  
Detroit, Michigan

**UNIVERSITY OF MISSOURI-KANSAS CITY**  
KCRC  
Bushenyi District, Uganda

**UNC-CHAPEL HILL**  
Health Alert Uganda  
Gulu, Uganda

**UNIVERSITY OF NOTRE DAME**  
PEDA  
Vientiane, Laos

**UNIVERSITY OF ROCHESTER**  
Kallpa Iquitos  
Iquitos, Peru

**UNIVERSITY OF SOUTHERN CALIFORNIA**  
CareNet Ghana  
Hohoe, Ghana

**UNIVERSITY OF TEXAS AT AUSTIN**  
Clinica Ana Manganaro  
Guarjila, El Salvador

**UNIVERSITY OF VIRGINIA**  
Build Your Future Today  
Center  
Siem Reap, Cambodia

**UNIVERSITY OF WASHINGTON**  
WDA  
Phnom Penh, Cambodia

**UNIVERSITY OF WISCONSIN-MADISON**  
COWS  
Kampong Thom, Cambodia

**VANDERBILT UNIVERSITY**  
Dios es Amor  
Lima, Peru

**WASHINGTON UNIVERSITY IN ST. LOUIS**  
UDHA  
Iganga, Uganda

**WHITMAN COLLEGE**  
Burmese Women's Union  
Chiang Mai, Thailand



# OUR MISSION

*GlobeMed aims to strengthen the movement for global health equity by empowering students and communities to work together to improve the health of people living in poverty around the world.*

We believe every human life has equal worth and every person deserves the chance to thrive. This belief has drawn together our network of students, communities, and supporters from all walks of life and from every corner of the world. Health for all is within our grasp, but we can only achieve it by working together.

# PRESIDENTS' MESSAGE

## *GlobeMed at Rhodes College*

Dear friends,

The 2011-2012 school year has been a very exciting time for GlobeMed at Rhodes College. It has been our honor to be a part of a year defined by change and growth. The size of our chapter has nearly doubled from around 20 people to over 45 members now. Thanks to their commitment and, of course, your support, we have raised over \$10,000 once again to expand our water filtration project with AMOS in Nicaragua. For the third straight year our Silent Art Auction and 5K Run were both huge successes and helped us reach the goals we set with our partner.

As our chapter has grown at Rhodes, so has our network. This spring a group of us attended a talk at Vanderbilt University with Partners in Health's Joia Mukherjee, the first of hopefully many co-sponsored events between the Vanderbilt and Rhodes College chapters. We also hosted our first ever Alumni event over homecoming weekend.

For our supporters, thanks again for everything that you do. We could not work in partnership with AMOS without your help. And to our fellow GlobeMed members, we look forward to seeing the incredible things you will accomplish in the coming years. During the past few years it was amazing to watch GlobeMed at Rhodes increase exponentially in membership and capacity, and we look forward to seeing how the partnership and network grow further in the future.

GlobeMed has changed our lives in ways we couldn't even imagine, and has taught us so much about our collective ability to make a difference. We look forward to continue being involved in the GlobeMed network and working toward global health equity as alumni.

In solidarity and love,  
Jason Pace and Ashley Newman  
2011-2012 Co-Presidents

### IN THIS REPORT:

- 1 MISSION STATEMENT
- 2 2011 - 2012 AT A GLANCE
- 3 ABOUT US
- 4 OUR PARTNER
- 5 OUR PROJECT
- 6 CAMPAIGNS
- 7 GLOBALHEALTHU
- 8 COMMUNITY BUILDING
- 9 GRASSROOTS ON-SITE WORK INTERNSHIP
- 10 WORLD DAY OF SOCIAL JUSTICE
- 11 GLOBEMED GLOBAL HEALTH SUMMIT
- 12 OUR FUTURE
- 13 FINANCES
- 14 STAY CONNECTED
- 15 THANK YOU



# 2011-2012 AT A GLANCE



## **August 25, 2011**

### *Student Activity Fair*

GlobeMed at Rhodes executive board and staff members recruited new and returning students to join them in the movement for global health equity.

## **September 1, 2011**

### *First Chapter Meeting*

The Rhodes chapter welcomed new staff members and wasted no time introducing them to the work GlobeMed has accomplished at Rhodes and as a national network. Staff members were reintroduced to the GlobeMed model and Rhodes' partner organization AMOS.

## **September 12, 2011**

### *Philanthroper Multimedia Campaign*

For the first time ever, GlobeMed at Rhodes College participated in a network wide event that used social media such as Facebook and Twitter to reach out all over the world and raised money via the donation site Philanthroper.com

## **September 24-25, 2011**

### *Third Annual GlobeMed at Rhodes College Silent Art Auction*

This year we once again held our Annual Silent Art Auction, which has become a staple of Rhodes College's Parents Weekend.

## **October 1, 2011**

### *Fall Staff Retreat*

At our fall retreat, the Rhodes Chapter welcomed new members by introducing to the GlobeMed model and mission. In addition to informing them about our partnership with AMOS Salud y Esperanza we also planned our fundraising strategy to match the arc of the year.

## **October 19, 2011**

### *Emergency Relief Fundraising Push*

In response to an emergency Tropical Storm that devastated some of Nicaragua's northern territories, GlobeMed at Rhodes College worked with AMOS to raise money for their emergency response packages to help begin rebuilding the community.

## **October 21, 2011**

### *First Annual GlobeMed at Rhodes College Homecoming Alumni Event*

During Rhodes College' Homecoming weekend, we held our first Alumni event, where alumni had a chance to answer questions and network with college students who want to continue working toward social justice and global health equity far into the future.

## **November 11, 2011**

### *2nd Annual Rave for a Cause*

Repeating one of our most successful new campaigns from last year, GlobeMed at Rhodes College hosted a benefit party at a local Memphis venue with live music and participants from all over the Memphis community.

## **March 23, 2012**

### *Partners in Health's Joia Mukherjee Guest Lecture at Vanderbilt University*

A group of GlobeMed at Rhodes' students traveled to nearby Nashville to hear a lecture hosted by GlobeMed at Vanderbilt featuring Partners in Health's Dr. Joia Mukherjee. After the lecture, we spent time with member of the Vanderbilt chapter as well as Dr. Mukherjee and shared stories from our experiences working toward global health equity.



## GlobeMed at Rhodes College



# ABOUT US

GlobeMed at Rhodes College was launched in the fall of 2008 by a group of students looking to be part of a movement for social justice and the first global health organization on-campus.

In the beginning of 2009, a partnership with A Ministry of Sharing Health and Hope (AMOS Salud y Esperanza) in Managua, Nicaragua was formed.

GlobeMed at Rhodes College now has over 45 committed chapter members and has participated on four consecutive summer delegations to work with AMOS in Nicaragua, and has raised over \$28,000 to support community health projects.

*since our founding in  
september 2008, our chapter  
has grown from 09 to  
45 members.*

# OUR PARTNER

A Ministry of Sharing Health & Hope  
(AMOS Salud y Esperanza)



## WORKS IN MANAGUA, NICARAGUA

**POPULATION: 13,000**

Nicaragua is the second poorest country in the Western hemisphere, and is marked by a history of political turmoil, civil war, and catastrophic natural disasters which have contributed to the widespread poverty. A devastating earthquake struck Managua in 1972, and Hurricane Mitch in 2000 destroyed thousands of homes in the northern regions of the country. According to the UN, 80% of Nicaraguans live on less than \$2 per day. Due to a small budget and difficult access to rural areas, healthcare access in Nicaragua is limited.

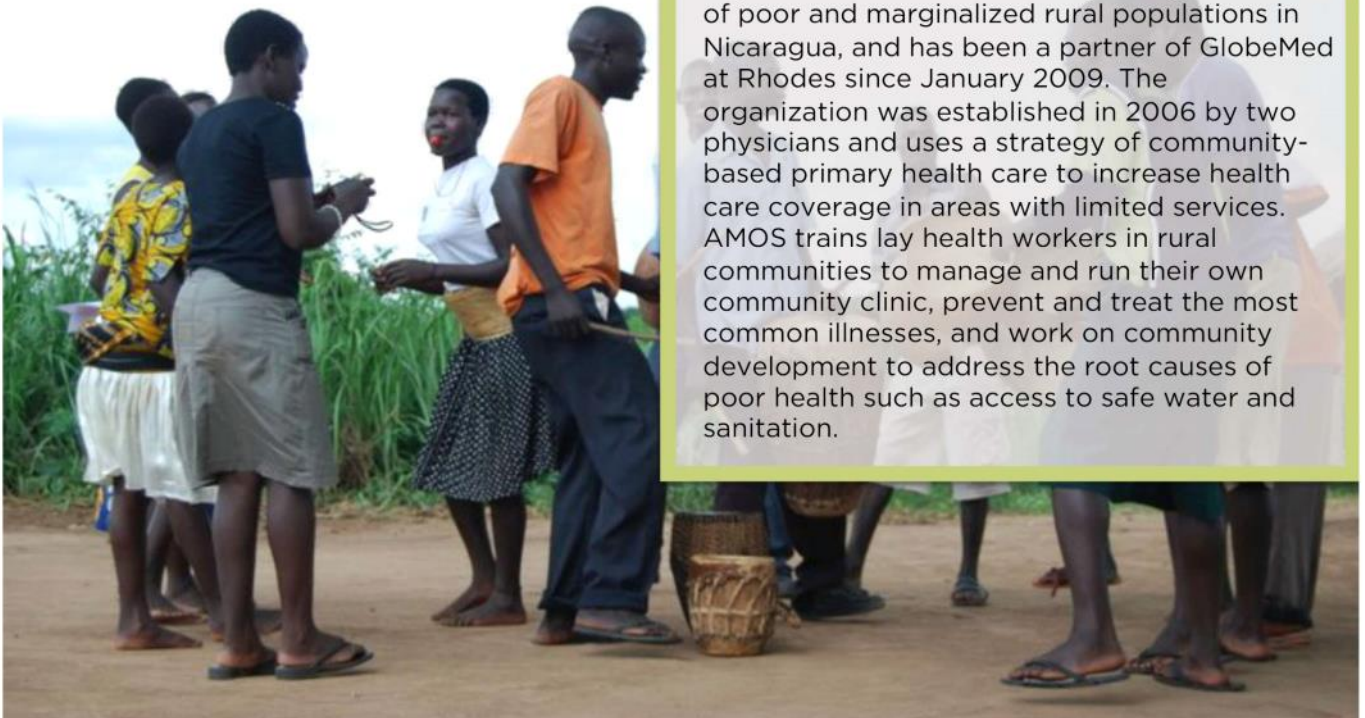
**KEY FACT:** Only 68% of Nicaragua's rural population have access to an improved water source.

**KEY FACT:** Adolescent pregnancies account for 1 in 4 births nationally.

## ABOUT AMOS

**FOUNDED IN 2006**

AMOS Health & Hope is a non-profit organization dedicated to improving the health of poor and marginalized rural populations in Nicaragua, and has been a partner of GlobeMed at Rhodes since January 2009. The organization was established in 2006 by two physicians and uses a strategy of community-based primary health care to increase health care coverage in areas with limited services. AMOS trains lay health workers in rural communities to manage and run their own community clinic, prevent and treat the most common illnesses, and work on community development to address the root causes of poor health such as access to safe water and sanitation.





# OUR PROJECT

AMOS Health & Hope

GlobeMed at Rhodes College

## *Why water sanitation & hygiene?*

It is estimated that one billion people worldwide lack potable water and as a result 1.6 million people yearly die from diarrhea related illnesses, most of which are children. In Nicaragua only 79% of the population has access to potable water; when compared to rural areas, the access is even worse in the target populations we are working with; Chinandega, Boaco, and Matagalpa.



**18**

RURAL AREAS FOR  
COMMUNITY  
HEALTH WORKERS.

**200**

BIOSAND FILTERS  
WORTH OF  
MATERIALS.

**\$11,021**

TO PURCHASE  
BIOSAND FILTER  
MATERIALS AND  
TRANSPORTATION  
FOR COMMUNITY  
HEALTH WORK.

*GlobeMed at Rhodes College expanded our water filter project 3 new communities and provided support to community health workers and AMOS personnel for quality control and lab testing.*

This year, GlobeMed at Rhodes raised \$10,000 to help expand our water filter projects into three new communities; El Socorro and Tapasle, Matagalpa and El Bejuco, Boaco. Our expansion will build over 200 new biosand water filters which will reach 1,793 people. The money we raised will go toward the materials for the water filters as well as transportation for community health workers and AMOS personnel for the purpose of maintenance and long-term filter testing. By expanding these water filter systems and monitoring and training in communities from community health workers, AMOS and GlobeMed at Rhodes College aim to decrease the amount of water-borne illnesses by over 30% within the first year.

# CAMPAIGNS

*Campaigns are on-campus events and initiatives that raise funds for GlobeMed partner organizations' grassroots projects abroad.*

EVENT TITLE	EVENT DESCRIPTION	MONEY RAISED
<b>Silent Art Auction</b>	Annual art auction featuring art pieces donated by students and campus community members.	<b>\$1500.08</b>
<b>Coffee Sales</b>	Quarterly campaign selling donated coffee and donuts to students on campus during midterms and finals.	<b>\$270</b>
<b>Candy Canes/Easter Eggs for Nicaragua</b>	Personalized candy canes and Easter eggs for students who wanted to send small, yet thoughtful, gifts to their friends during the holiday season.	<b>\$600</b>
<b>End of the Year Cupcakes</b>	Celebrating the end of the year with delicious homemade cupcakes.	<b>\$270</b>
<b>Rave for a Cause</b>	Popular raves held at a local disco venue during the school year.	<b>\$122.57</b>
<b>3rd Annual 5k Fun(d) Fun</b>	5K held at Overton Park for campus and community members.	<b>\$2834.5</b>
<b>Individual Giving</b>	Generous contributions from the GlobeMed family and community members to support AMOS.	<b>\$4402.85</b>

**Total funds raised for AMOS in 2011-2012:**

**\$10,000**

Since 2008, GlobeMed at Rhodes College has raised a total of over \$28,000 to support AMOS's community-based health programs in Managua, Nicaragua.

# CAMPAIGNS

## HIGHLIGHTS FROM THE YEAR

"This past year we really tried to push our focus on emphasizing our presence as a chapter on campus and within our local community. We established great bonds and helped raise awareness and finances for AMOS"  
 -Anahita Rahimi-Saber, Director of Campaigns



### 3rd Annual Fun (d) Run

*February 18, 2012*

Students and community members began volunteering and preparing for the 5k during the cold early hours of February to show their support for AMOS in Managua, Nicaragua. The race was very successful with over 100 signed up runners and winners in all age groups (our youngest was only 5!). GlobeMed merchandise was sold at the event and chapter members spent the day talking to participants about the importance of clean water for health reasons.



"With a team of dedicated and passionate individuals, the RC GlobeMed Chapter accomplished much this year. From bake sales and auctions to 5K runs, they raised \$10,000 for a water filtration program in Nicaragua. They put in a lot of hard work and it's clear that it really pays off."  
 -Alex Yu, Class of 2013

### Silent Art Auction

*September 23-24, 2011*

Over 100 pieces of art were donated from all over the campus and local community to support the 3rd annual silent art auction. The event was held during Family Weekend and parents had the opportunity to bid for their favorite pieces and enjoy homemade baked goods.

# globalhealthU



Jonathan Smith

*globalhealthU is GlobeMed's signature year-long global health curriculum. This student-designed and driven program equips students with the critical thinking skills that will inform a life of leadership for global health.*



This year was a learning experience, not just for GlobeMed staff, but also for us as ghU Coordinators. Moving through controversial issues of poverty, economics, and disease, our chapter was vocal in their opinions and brought new ideas to each meeting. As coordinators, we learned the importance of appealing to different learning styles. We were inspired to be creative and we brought to ghU different techniques of sharing from discussions and debates to role play and simulations. For instance, at one of our meetings, we took five definitions of poverty from various sources and removed the author's name. For each definition, we had groups discuss what they liked/did not like within the definition and then share and debate with the larger group. At the end of this short discussion, the staff members were asked to guess the author of the definition. Before anyone realized, we were 15 minutes over our meeting time. People wanted to stay, discuss, debate, and learn. That is what GlobeMed and ghU is all about- sparking student's interest, empowering them to find their own voice, and turning their voice into action.

Carolyn Lamere and Bethany Larkin  
2011-2012 globalhealthU Coordinators

## **2011-2012 CURRICULUM**

### **ORIENTATION**

Chapter members were equipped with a thorough understanding of the values of GlobeMed and explored their personal values.

### **POVERTY AND HEALTH**

Chapters conceptualized poverty and sought to explore the connections between global health and poverty.

### **THEORETICAL FRAMEWORKS**

We considered the views of six developmental economists to explore the root causes and paths out of poverty.

### **INDEPENDENT INVESTIGATION**

Chapters conducted an in-depth investigation on a topic of interest.

### **STUDENTS' ROLE**

Following a critical discussion of our role in perpetuating poverty, we sought to understand how we can be effective advocates.

### **REFLECTION**

Chapters reflected on the year behind them both as individuals and in the context of their chapter.

# globalhealthU

## ON-CAMPUS EVENTS

### **This I believe...**

*September 2011*

Members were instructed to write "This I Believe" statements on notecards describing tenets they hold to be true, like "everyone should have free access to health care." A banner displaying the notecards was showcased at our chapter's annual art auction and in the on-campus coffee shop. Passers-by were encouraged to add their own statements. This project helped raise awareness of both GlobeMed at Rhodes and global health on campus and allowed students to express deeper passions than usually found on campus.

**"Our chapter ghU discussions provided an arena for me to discuss some of the burning issues of global health that are so often overlooked. I learned much from the readings, but even more from my peers who brought in their own experiences to our discussions."**

**- Alex Galloway**

### **Spotlight: Mortality in Nicaragua vs USA**

*March 2012*

In this meeting, chapter members compared the top causes of death in the United States and our partner country, Nicaragua. Members discussed how mortality was different from what they had expected; non-communicable diseases were leading causes of mortality in both countries, for example. At the end of the discussion, members had a firmer idea of the health situation in Nicaragua and how it differs from their life in the United States.

# COMMUNITY BUILDING

*Through service and team-building events, community and camaraderie is fostered around global health and social justice within GlobeMed chapters, the GlobeMed network and surrounding communities.*



**TOTAL # OF CHAPTER MEMBERS:**

**45**

**# OF COMMUNITY BUILDING EVENTS:**

**03**

This year we really tried to improve the ice-breakers during meetings and solidify our bond as a chapter with educational and team-building retreats. Hopefully, for the future we can have more events, even more staff participation, and really branch out into the community.

# GROW INTERNSHIP

[GRASSROOTS  
ON-SITE WORK]

ANNUAL REPORT 2011-2012

*"And that's why I am so enamored with AMOS and my time spent alongside them. They believe in improving health for all but with the vision that the communities can elect local leaders and bond together to achieve access to health care for themselves. Just as AMOS has faith in these communities all over Nicaragua, I have faith that AMOS' work will continue to bring about positive change in Nicaraguan communities and be a model for others working in public health around the world." – Austin Armstrong, c/o 2014*

# OF GROW INTERNS:

02

LENGTH OF STAY: 05 weeks

WORK DESCRIPTION:

During this year's trip the GROW interns spend Monday through Friday out in rural communities of Nicaragua helping the AMOS water filtration supervision team.

Supervisions consist of going from house to house and interviewing families on their use and maintenance of their water filter AMOS gave them up to a year and a half ago. Interns also assist with lab work out in the field which consists of gathering water samples from 20% of the houses with filters and collecting source water, filtered water, and stored filtered water. Then each sample is tested for E. Coli and other bacteria. Friday through Sundays are spent at the AMOS guest house, which is next to the central office, in Managua. The last week is for entering in data to a database for statistics purposes and meeting with the AMOS team about the MOU.

JULY 9 2012 – AUGUST 19 2012

*Through Grassroots On-site Work (GROW) internships, students build capacity of their partner organization, engage in mutual learning, and ensure long-term stability of their partnership.*

# 2012 GLOBAL HEALTH SUMMIT

2012 GlobeMed  
GLOBAL HEALTH  
**SUMMIT**  
APRIL 12-14  
EVANSTON, IL



WALKING TOGETHER  
WALKING FAR  
**PARTNERSHIP** as a  
FRAMEWORK FOR MEANINGFUL ACTION

**2012 DELEGATES:** Jason Pace, Dianne Loftis, Donya Ahmadian, Chris Perkins, Alex Galloway

“The Summit felt more like a family reunion than a conference, even though I went in only knowing four people. The partnership theme really resonated with me as I got to know our amazing network of students and our chapter’s own partner, Dr. Laura Parajon.”  
-- Dianne Loftis, c/o 2014

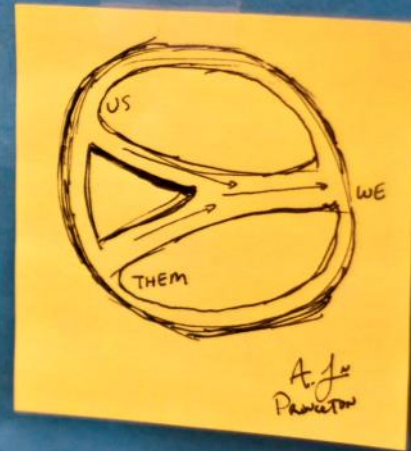


*The annual GlobeMed Global Health Summit brings together university students from across the nation for three days of intensive lectures and workshops with representatives from grassroots global health organizations and a range of experts.*



# OUR FUTURE

*"For me, GlobeMed was never just another meeting to attend; instead, it is a way of life, a way of viewing the world. It gave me a framework for understanding and addressing global inequalities, while empowering me to take action. This GlobeMed mentality will continue to shape my life goals."  
– Emily Woods, c/o 2012*



The summer of 2012 is a time for reflection and evaluation of an exciting and memorable year for GlobeMed at Rhodes College. In the upcoming year, partnership, community, and growth will not be lost in the battle for extra funds. We will continue to emphasize solidarity but will do so in the context of growth and learning, not just finances. Our partner, AMOS Health & Hope, in Nicaragua does incredible work and the people there are encouraging and helpful to our cause. We look forward to strengthening the relationships with them by increasing communication, enlightening chapter members, and encouraging a more dynamic partnership that emphasizes our continued solidarity. This past year the number of chapter members grew substantially and we look to continue this upward trend but not at the cost of community or efficiency. Community building is one of top goals for 2012-2013 and this is something we will achieve by encouraging friendship outside of meeting times by having optional, exciting events. We plan to build the influence and presence on Rhodes' campus by encouraging more open activities for students and faculty to participate as well as more awareness campaigns that aim to spark the fire to make a change. In future years we want to incorporate our chapter more into the life of the city of Memphis and the health challenges that abound so close to home. By emphasizing the connections among the GlobeMed chapters we want to encourage our members to appreciate and be encouraged by the work that students across the world are doing in the fight for global health equity.

# FINANCES

*In 2011 – 2012, GlobeMed at Rhodes College raised **\$10500** for AMOS Health and Hope to support projects in Managua, Nicaragua.*

	CAMPAIGN DONATIONS	OPERATIONS	TOTAL REVENUE
<b>Revenue</b>			
Events	\$5597.15		\$5597.15
Individual Giving	\$4902.89		\$4902.89
<b>SUBTOTAL</b>	<b>\$10,500</b>	<b>\$0</b>	<b>\$10,500</b>

	CAMPAIGN DONATIONS	OPERATIONS & GRANTS	TOTAL
<b>Current Finances</b>			
Cash Reserves		\$500.04	\$500.04
2012-2013 University Funding			
<b>EXISTING BALANCE</b>			<b>\$500.04</b>

# KEEP IN TOUCH



Read more about our partner and project, and the GlobeMed network. [globemed.org/impact/rhodes](http://globemed.org/impact/rhodes)



“Like” us on Facebook to find out about upcoming events [www.facebook.com/globemedrhodes](http://www.facebook.com/globemedrhodes)



Follow our blog and chime in on the discussion. [globemedatrhodes.wordpress.com](http://globemedatrhodes.wordpress.com)



Check out our photos on [globemed.smugmug.com/GlobeMed-at-Rhodes-College](http://globemed.smugmug.com/GlobeMed-at-Rhodes-College)



Follow us on twitter at [twitter.com/globemedrhodes](http://twitter.com/globemedrhodes)



Find our chapter on [www.razoo.com/story/Globemedatrhodes?referral\\_code=sw](http://www.razoo.com/story/Globemedatrhodes?referral_code=sw) and make a donation to support our partner and project today.

**WANT TO REACH US IN 2012-2013?**

CONTACT: Elizabeth Short  
E-MAIL: [eihshort@gmail.com](mailto:eihshort@gmail.com)

# EXECUTIVE BOARD



## CO-PRESIDENT

Jason Pace  
*jason.pace47@gmail.com*

## CO-PRESIDENT

Ashley Newman  
*ashleylaurennewman24@gmail.com*

## globalhealthU COORDINATOR

Carolyn Lamere  
*carolyn.lamere@gmail.com*

## globalhealthU COORDINATOR

Bethany Larkin  
*larkin.bethanyj@gmail.com*

## CAMPAIGN COORDINATOR

Anahita Rahimi-Saber  
*anahitars1991@gmail.com*

## DIR. OF COMMUNITY BUILDING

Kira Reich  
*kirareich@gmail.com*

## DIRECTOR OF COMMUNICATIONS

Emily Woods  
*woods.ec@gmail.com*

## DIRECTOR OF COMMUNICATIONS

Donya Ahmadian  
*ahmdm@rhodes.edu*

## GROW COORDINATOR

Elizabeth Short  
*eihshort@gmail.com*

## DIRECTOR OF FINANCES

Ryan Kent  
*ryanalexanderkent@gmail.com*

# SUPPORTERS

*A sincere thanks to the following advocates, mentors, donors, and colleagues for making our 2011 – 2012 year a great success:*

## INDIVIDUALS

Reverend Walt Tennyson  
Woods family  
Loftis family  
Galloway family

# THANK YOU



GlobeMed National Office  
620 Library Place  
Evanston, IL 60201  
847-467-2143  
[www.globemed.org](http://www.globemed.org)

*Copyright 2012 © GlobeMed. All rights reserved.*